

COMMUNITY OF
REGIONAL AFFAIRS
BUILDING
150 3RD ST

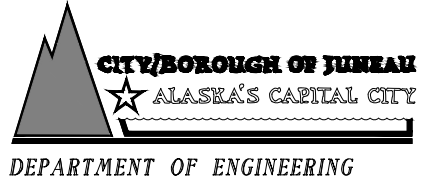
Excavate existing to a depth of 24" below
Civil Finish Grade to accept planting soil.
Install 24" depth planting soil. (30 CY +/-).

Excavate existing to a depth of 24" below
Civil Finish Grade to accept planting soil.
Install 24" depth planting soil. (8 CY +/-).

2



ADDENDUM No. TWO, May 21, 2012

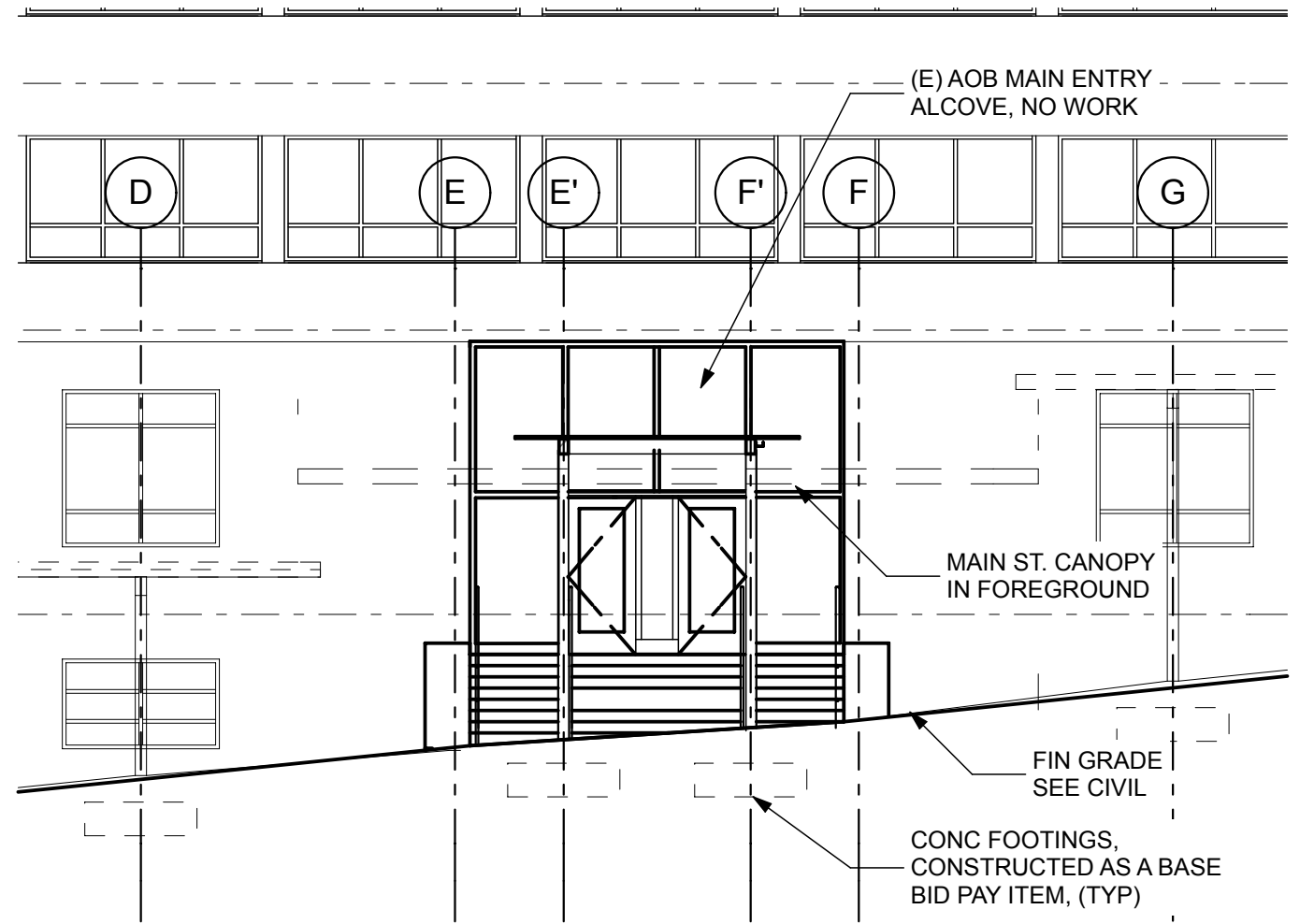
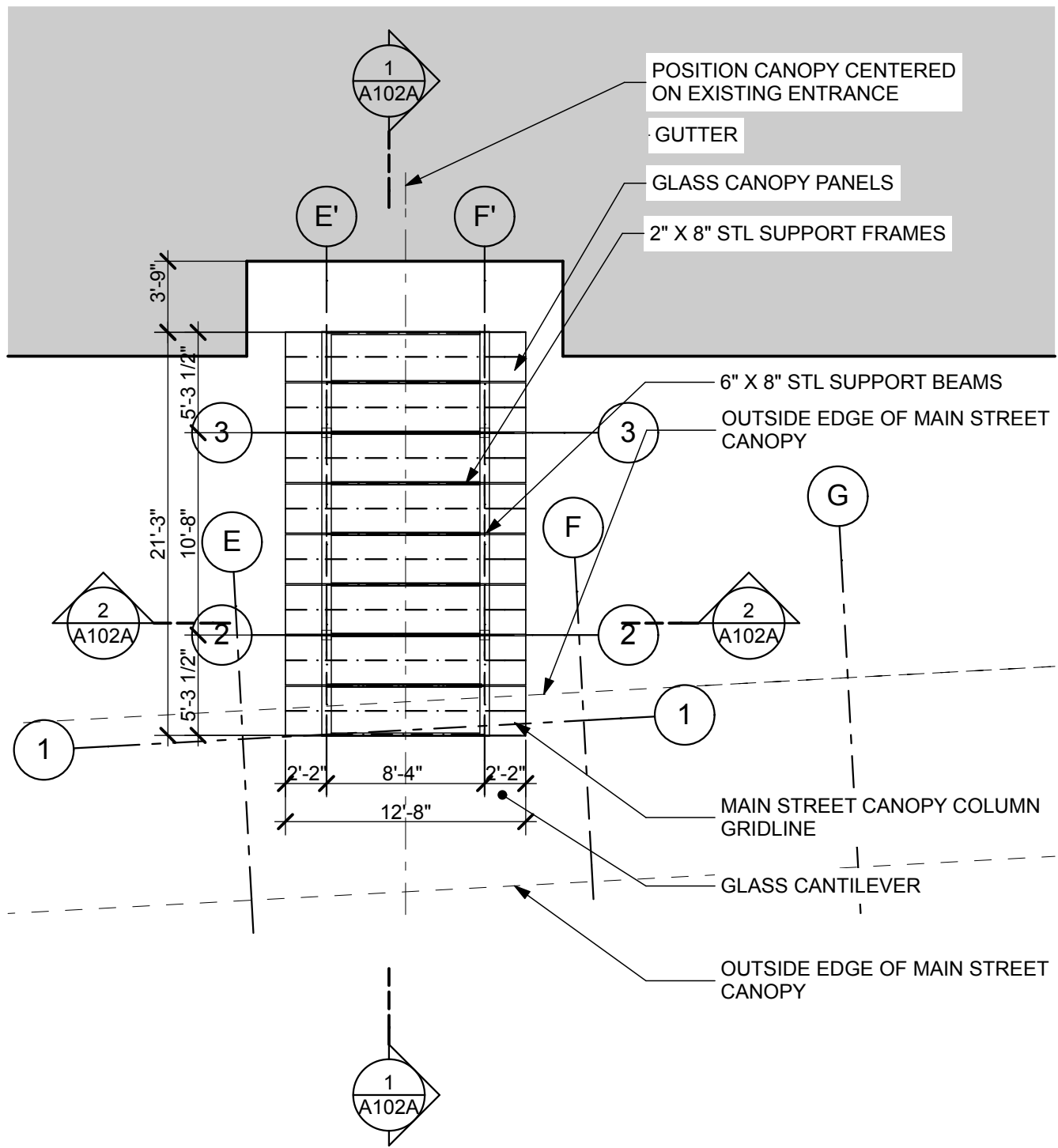


MAIN STREET IMPROVEMENTS
SECOND TO FIFTH STREET
CONTRACT NO. E12-167

WINDFALL FISHERMAN
SITE IMPROVEMENTS

SHEET NO.
L.404
28
of
44

JOB NO: J70456 | DRAWN BY: NF | DESIGNED BY: CM | CHECKED BY: CM | DATE: MAY 18, 2012



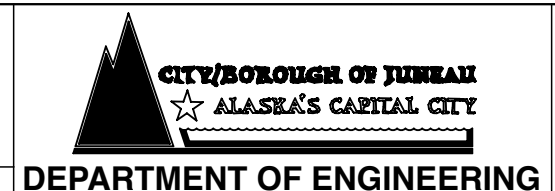
1 AOB ENTRY CANOPY- PLAN

0 4' 8' 16'

2 AOB ENTRY CANOPY- PARTIAL ELEVATION

0 4' 8' 16'

**ADDITIVE ALTERNATE THREE
ADDENDUM NO. TWO 5-21-12**

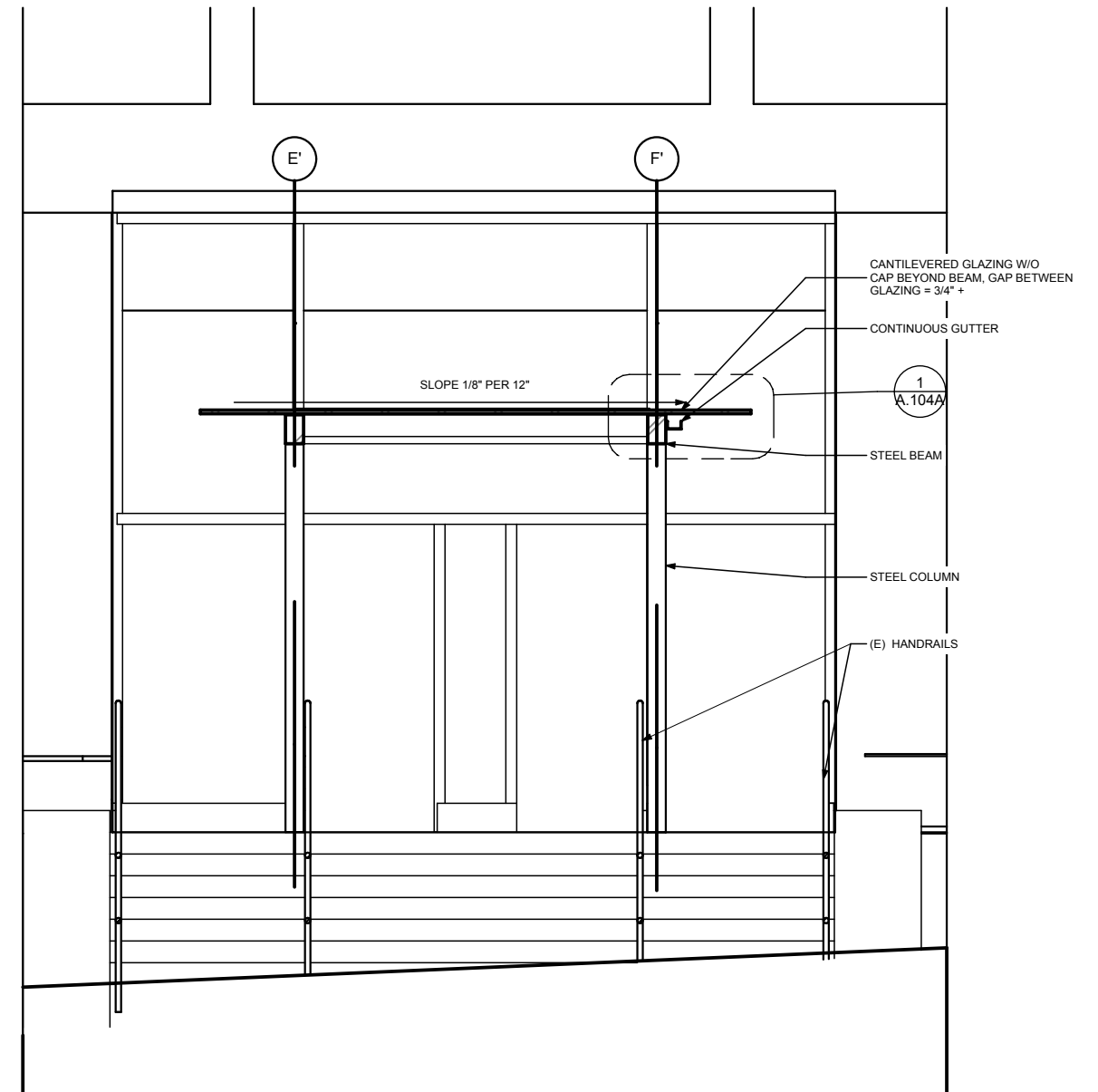
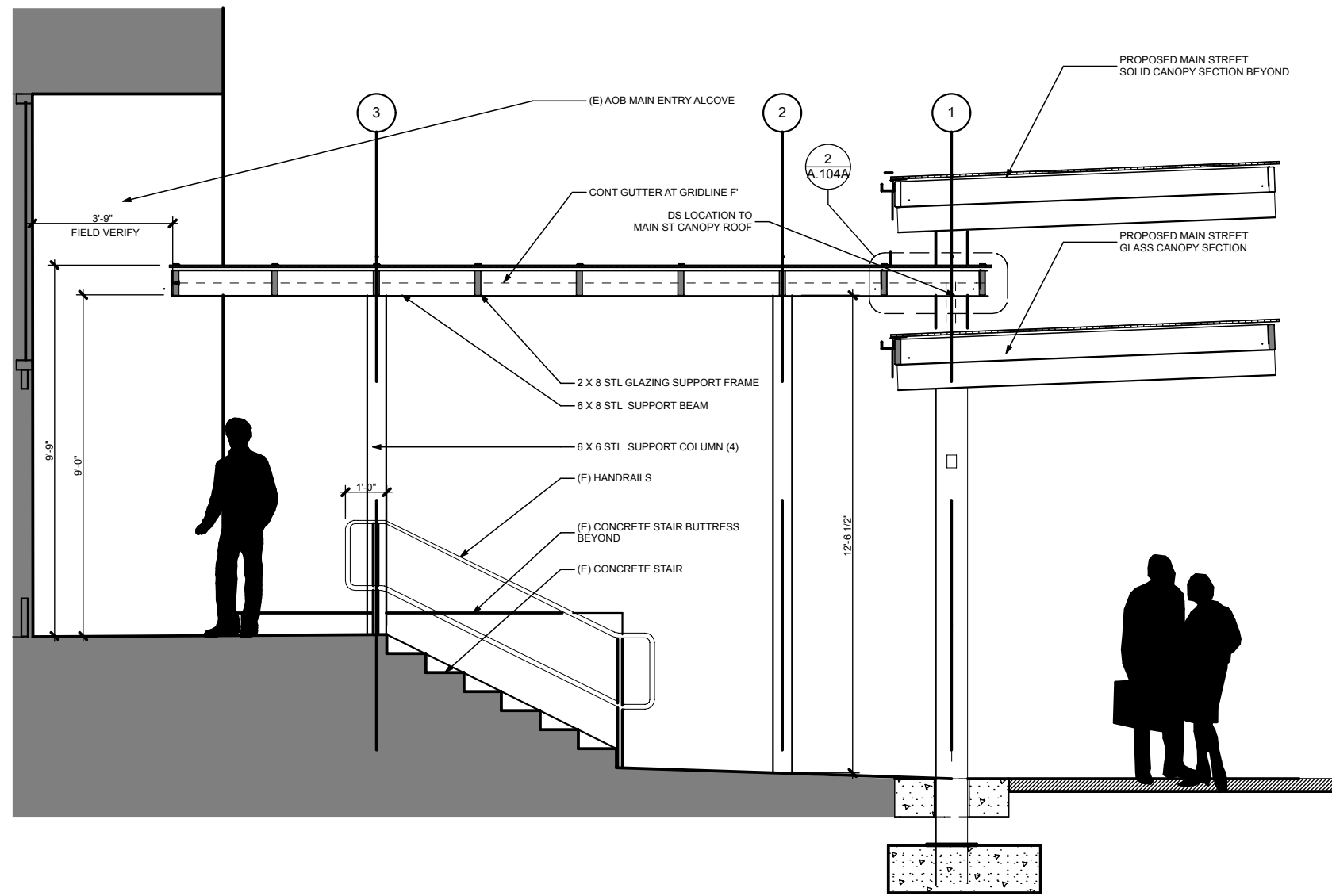


**MAIN STREET IMPROVEMENTS
SECOND TO FIFTH STREET
CONTRACT NO. E12-167**

**ALASKA OFFICE BUILDING
ENTRANCE CANOPY
PLAN AND ELEVATION**

SHEET NO.
A101A
38A
of
44

S:\LIB\70456 Upper Main\050 Design Drawings\C30\XREF\XREF BORDER FOR ADD ALT.dwg

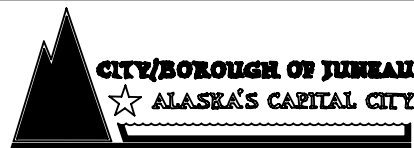


1 GLASS CANOPY SECTION

2 GLASS CANOPY SECTION



**ADDITIVE ALTERNATE THREE
ADDENDUM NO. TWO 5-21-12**



DEPARTMENT OF ENGINEERING

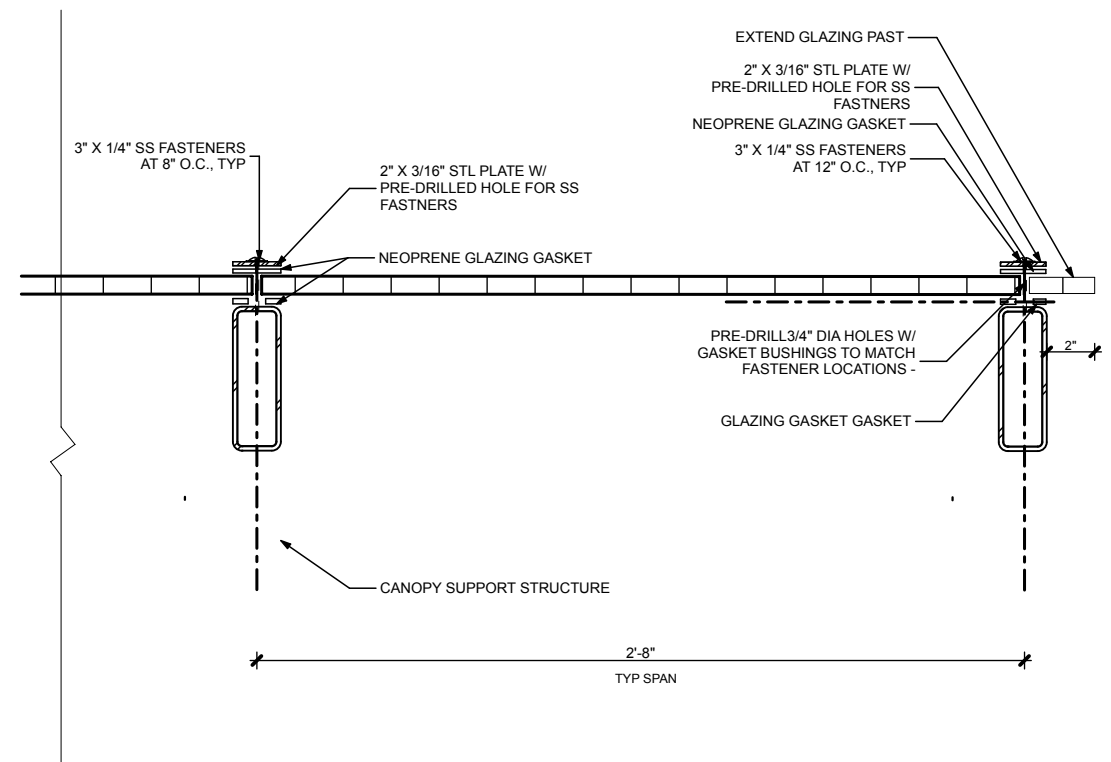
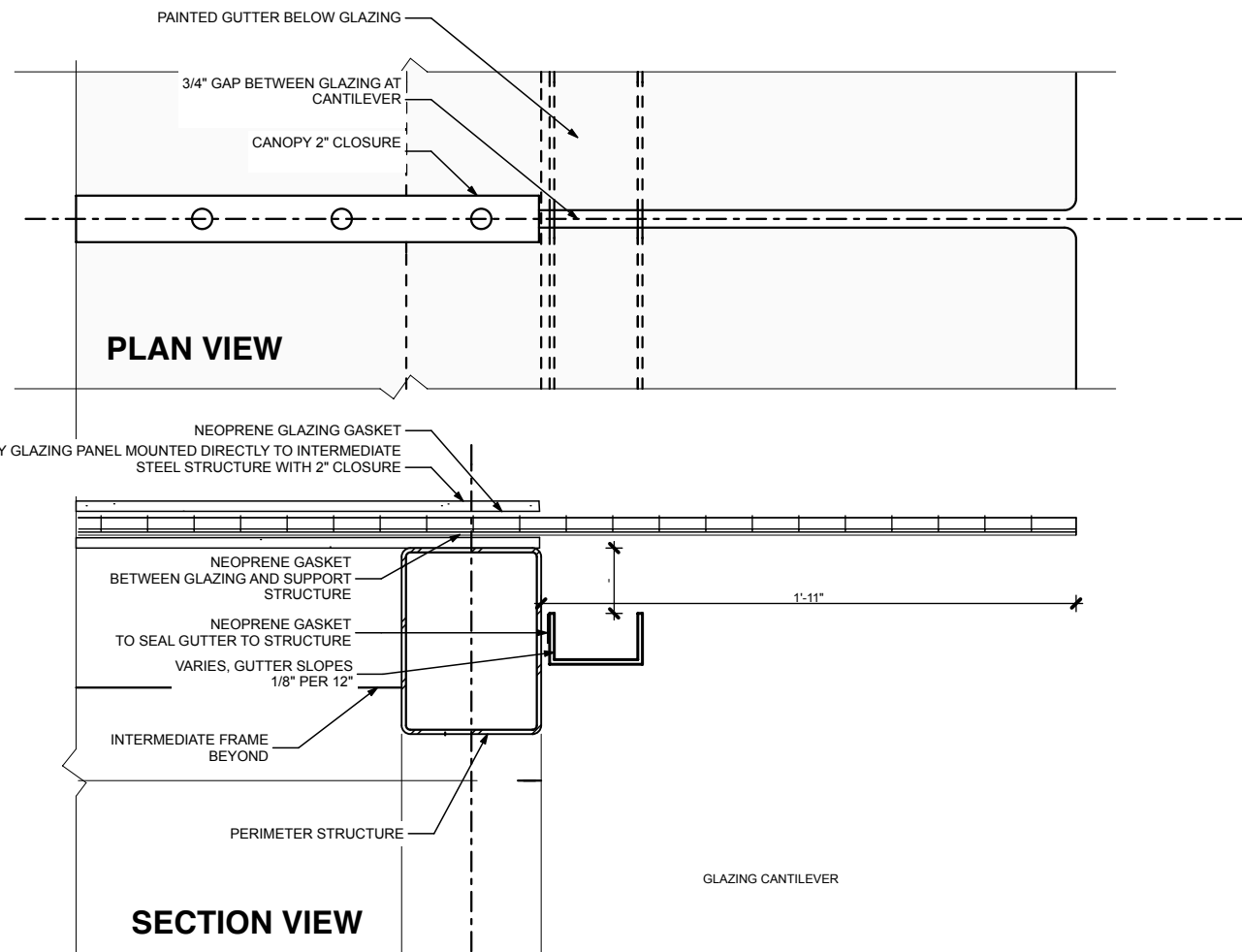
**MAIN STREET IMPROVEMENTS
SECOND TO FIFTH STREET
CONTRACT NO. E12-167**

**ALASKA OFFICE BUILDING
ENTRANCE CANOPY
CANOPY CROSS SECTIONS**

SHEET NO.
A102A
39A
of
44

JOB NO: J70456 DRAWN BY: JFSB DESIGNED BY: JFSB CHECKED BY: JFSB

S:\LIB\70456 Upper Main\050 Design Drawings\C30\XREF\XREF BORDER FOR ADD ALT.dwg



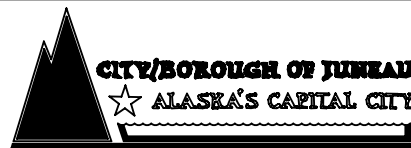
1 SECTION AT SUPPORT FRAME AND CANTILEVER



2 SECTION AT RAKE AND FIELD



**ADDITIVE ALTERNATE THREE
ADDENDUM NO. TWO 5-21-12**



DEPARTMENT OF ENGINEERING

**MAIN STREET IMPROVEMENTS
SECOND TO FIFTH STREET
CONTRACT NO. E12-167**

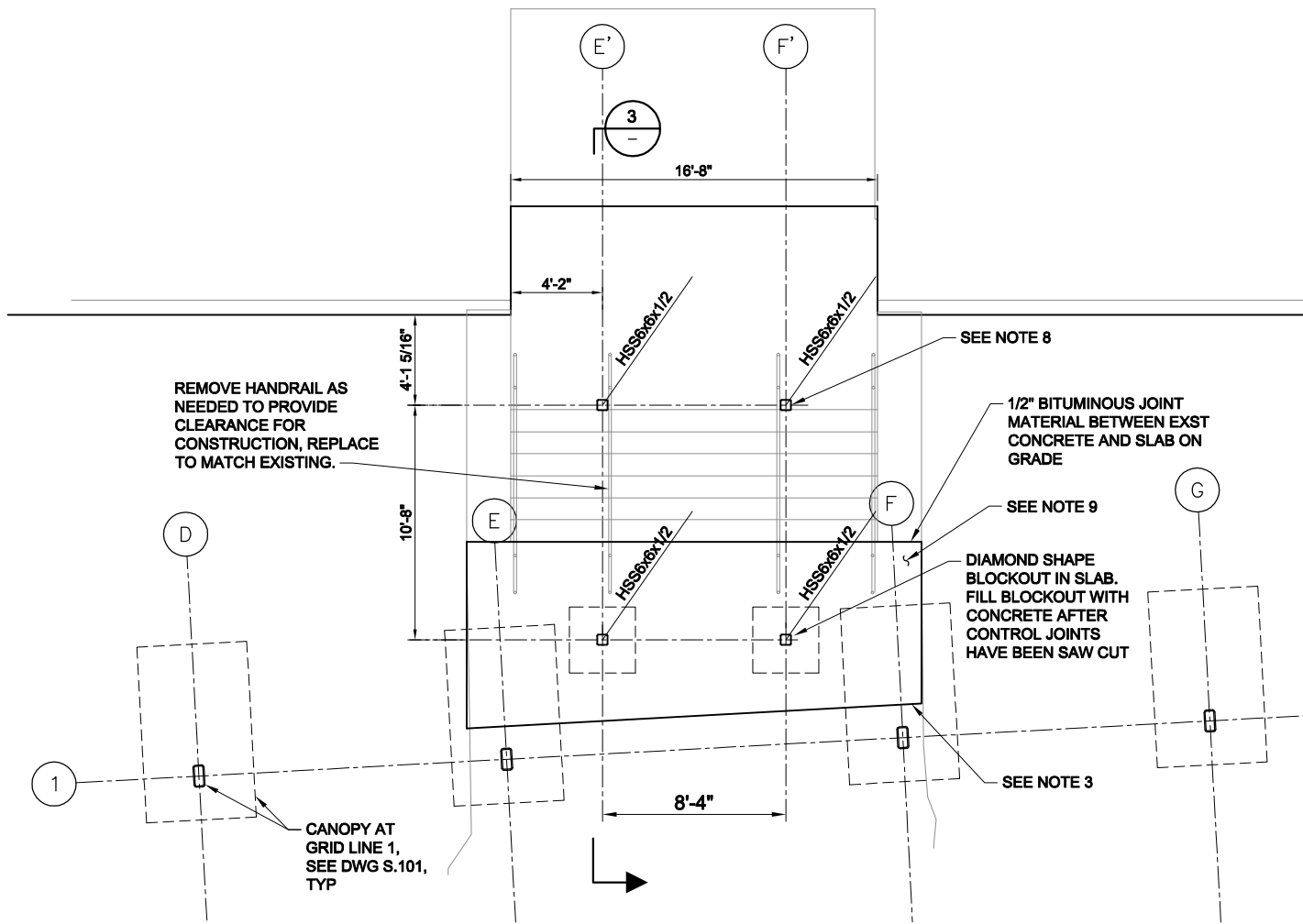
**ALASKA OFFICE BUILDING
ENTRANCE CANOPY
CANOPY DETAILS**

SHEET NO.
A.104A
41A
of
44

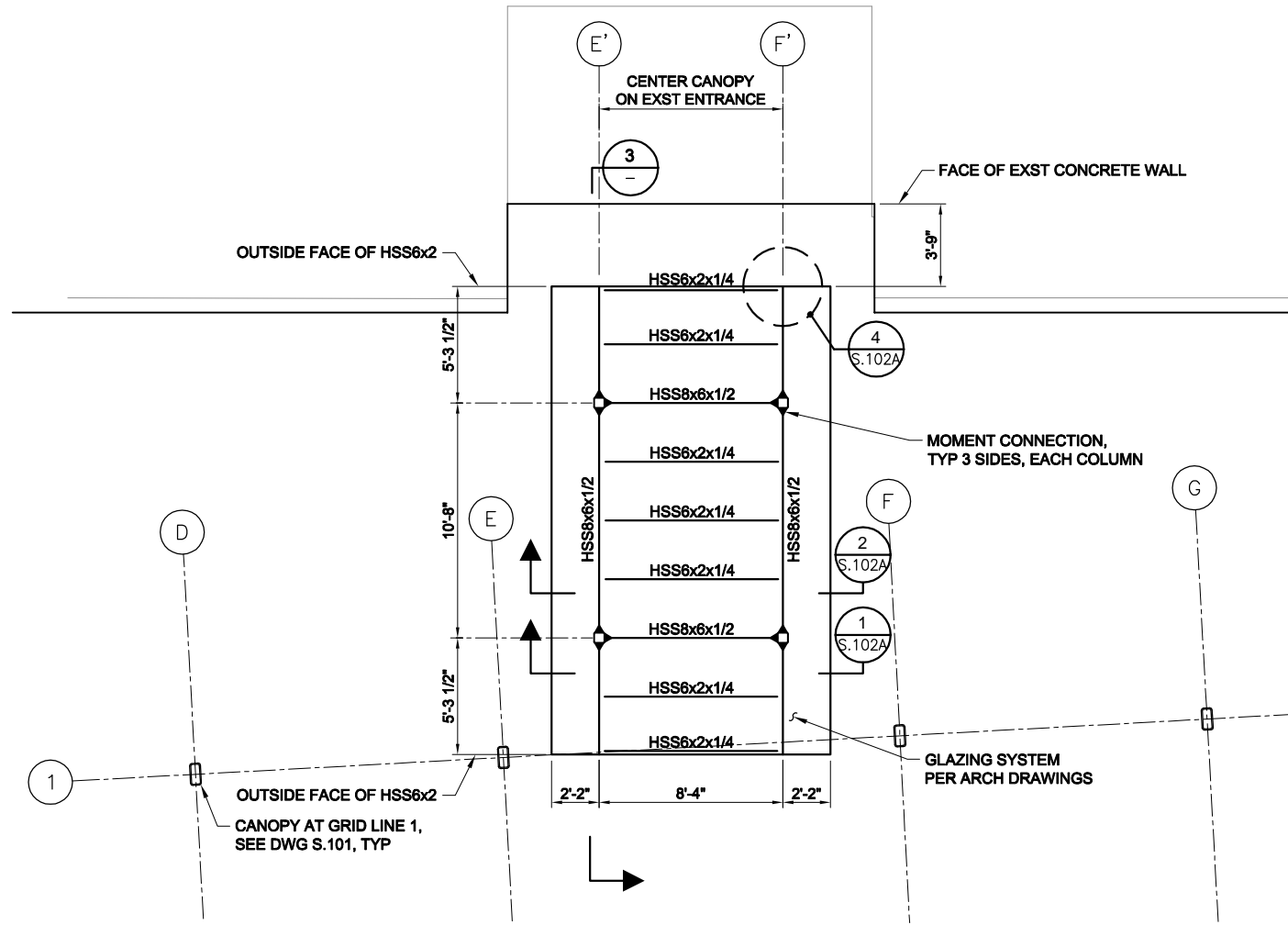
JOB NO.: J70456 DRAWN BY: JFSB DESIGNED BY: JFSB CHECKED BY: JFSB

S:\LIB\70456 Upper Main\050 Design Drawings\C30\XREF\XREF BORDER FOR ADD ALT.dwg

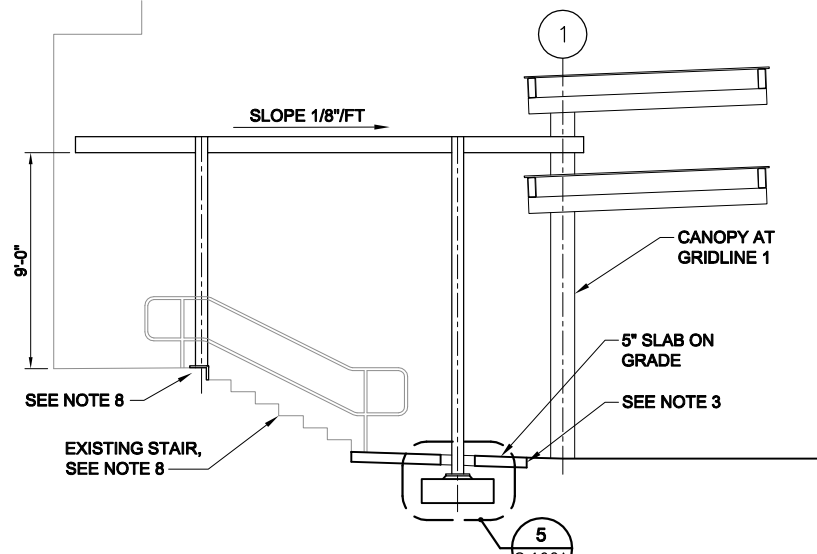
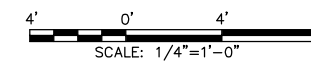
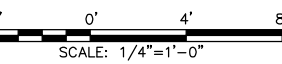
P:\12448\135-12448-11001\CAD\SheetFiles\CBJ\S101A-CBJ_CanopyPlanElev.dwg 2012-5-21 15:28:02



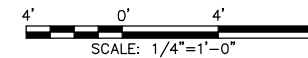
FOUNDATION PLAN
SCALE: 1/4"=1'-0"



CANOPY PLAN
SCALE: 1/4"=1'-0"



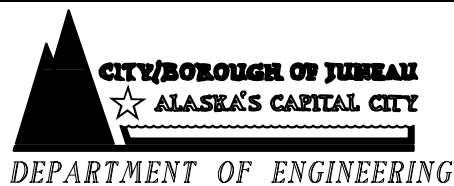
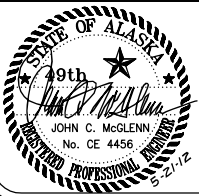
CANOPY SECTION
SCALE: 1/4"=1'-0"



NOTES:

- CANOPY LOCATION SHALL BE COORDINATED WITH ARCHITECTURAL DRAWINGS.
- FINISHED GRADE PER ARCHITECTURAL AND CIVIL DRAWINGS.
- COORDINATE SLAB TERMINATION WITH SIDEWALK AND PAVERS AT CANOPY ON GRID LINE 1.
- FOUNDATION DESIGN IS BASED ON IBC-2006 TABLE 1804.2 WITH ALLOWABLE BEARING PRESSURE EQUAL TO 3000 PSF FOR SANDY GRAVEL AND/OR GRAVEL (GW AND GP) TYPE MATERIAL.
- PRIOR TO PLACING FOOTING CONCRETE, EXCAVATIONS SHALL BE EVALUATED BY OWNERS QUALIFIED ENGINEER TO DETERMINE SUBGRADE MATERIAL TYPE AND BEARING CAPACITY.
- IF THE OWNERS QUALIFIED ENGINEER DETERMINES THAT SUBGRADE IS NOT 3000 PSF BEARING CAPACITY, THE EXCAVATION SHALL INCREASE IN DEPTH TO COMPETENT MATERIAL AND BACKFILLED WITH CDF TO BOTTOM OF FOOTING ELEVATION, OTHERWISE FOOTING DESIGN SHALL BE ADJUSTED BY ENGINEER OF RECORD.
- ALL DIMENSIONS RELATIVE TO EXISTING STRUCTURE SHALL BE FIELD VERIFIED BY CONTRACTOR PRIOR TO CONSTRUCTION. IN THE EVENT OF DISCREPANCY, CONTACT ENGINEER OF RECORD.
- DETAILS OF THE EXISTING CONCRETE STAIRS ARE UNKNOWN AND FIELD INVESTIGATION BY CONTRACTOR IS REQUIRED. ENGINEER OF RECORD WILL EVALUATE FIELD INFORMATION TO DETERMINE SUITABILITY OF EXISTING STAIRS TO FUNCTION AS FOUNDATION FOR THE CANOPY COLUMNS. THE BASE PLATE CONNECTION DETAIL MAY BE REVISED AS NEEDED AND THE STAIRS MAY REQUIRE STRENGTHENING.
- DEMOLISH EXISTING SLAB. REPLACE WITH PAVAR WALKWAY, SEE LANDSCAPE DRAWINGS.

ADDITIVE ALTERNATE THREE
ADDENDUM No. TWO MAY 21, 2012



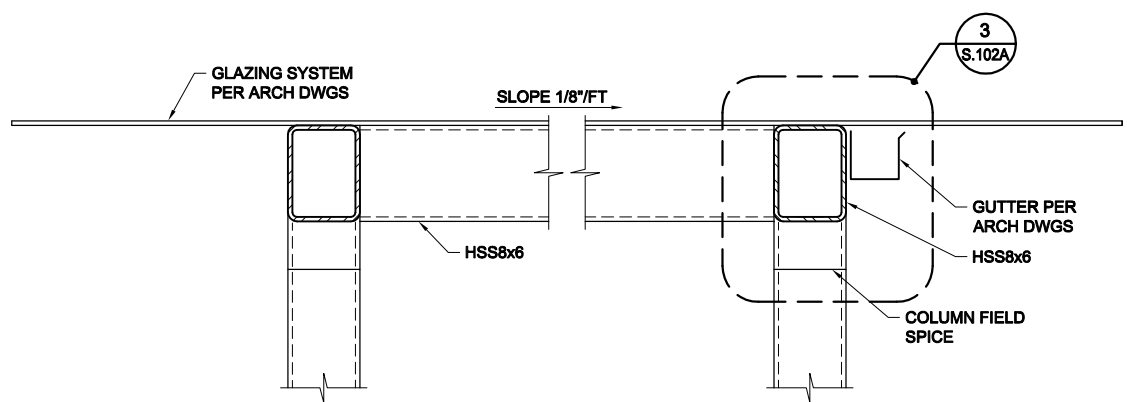
MAIN STREET IMPROVEMENTS
SECOND TO FIFTH STREET
CONTRACT NO. E12-167

ALASKA OFFICE BUILDING
ENTRANCE CANOPY
PLAN AND ELEVATION

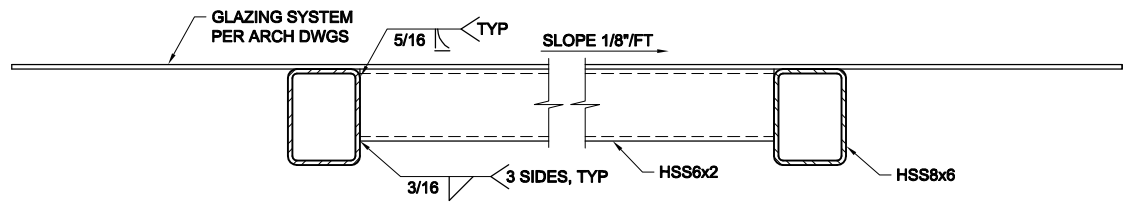
SHEET NO.
S.101A
43A
of
44

JOB NO: J70456 DRAWN BY: CAD DESIGNED BY: MMW CHECKED BY: DATE: MAY, 2012

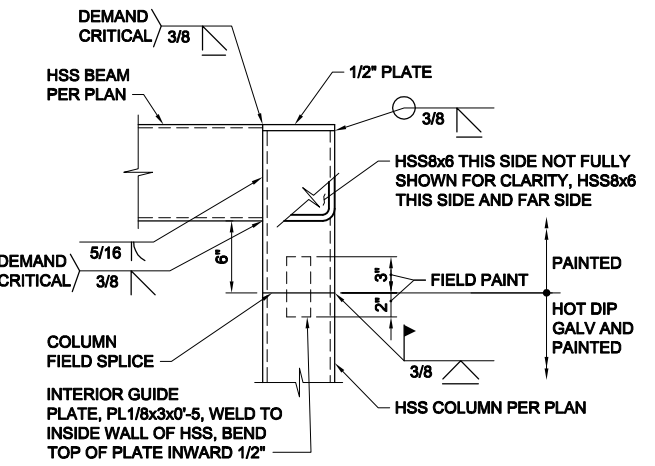
P:\12448\135-12448-11001\CAD\SheetFiles\CBJ\S102A-CBJ_CanopyDetails.dwg 2012-5-21 15:24:34



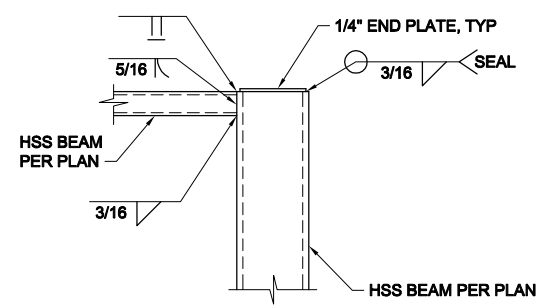
SECTION 1
0' 1' 2'
S.101A



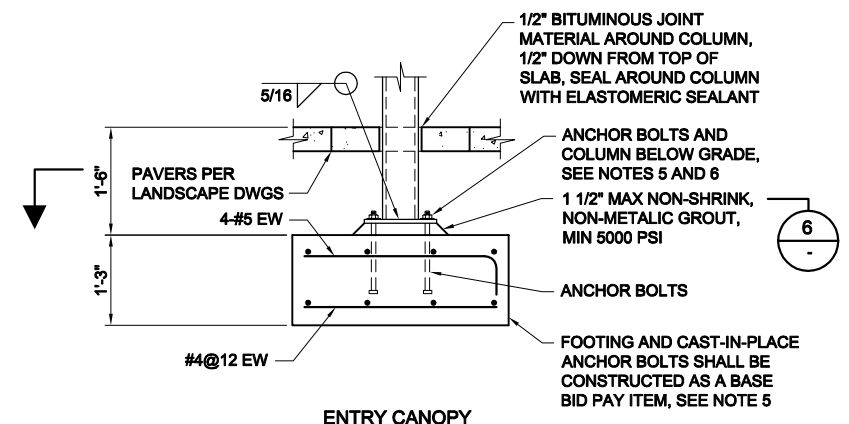
SECTION 2
0' 1' 2'
S.101A



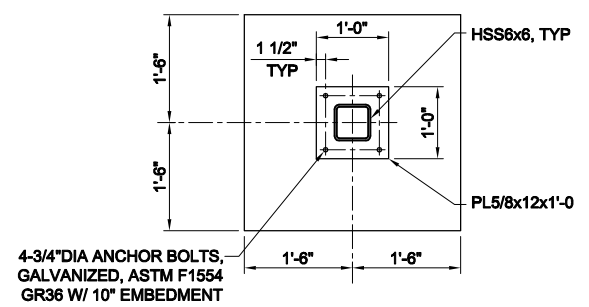
DETAIL 3
0' 1' 2'
S.101A



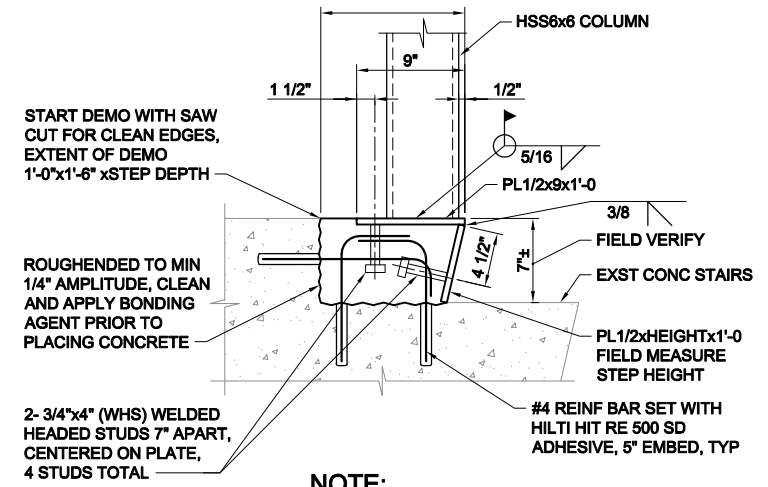
DETAIL 4
0' 1' 2'
S.101A



DETAIL 5
1' 0' 1' 2' 3'
S.101A



SECTION 6
1' 0' 1' 2' 3'
S.101A



DETAIL 7
0' 1' 2'
S.101A

NOTES:

- CANOPY LOCATION SHALL BE COORDINATED WITH ARCHITECTURAL DRAWINGS.
- FINISHED GRADE PER CIVIL AND ARCHITECTURAL DRAWINGS.
- STEEL FINISH PER ARCHITECTURAL REQUIREMENTS.
- ALL EXPOSED STEEL SHALL BE CONSIDERED ARCHITECTURALLY EXPOSED STRUCTURAL STEEL FRAMING.
- AT PHASE 1 OF CONSTRUCTION, ANCHOR BOLTS SHALL BE CAST-IN-PLACE, COMPLETELY COVERED WITH MARINE GREASE AND WRAPPED WITH MINIMUM 6 MIL PLASTIC SHEETING PRIOR TO BACKFILLING. AT NEXT PHASE, ANCHOR BOLTS SHALL BE UNCOVERED AND THOROUGHLY CLEANED OF GREASE AND OTHER MATERIALS THAT WOULD PREVENT ADHESION OF BITUMINOUS PAINT.
- COLUMNS BASE PLATES AND ANCHOR BOLTS BELOW GRADE SHALL BE PAINTED WITH BITUMINOUS PAINT AFTER STRUCTURE IS ERECTED. ALLOW PAINT TO FULLY CURE PRIOR TO BACKFILLING.

ADDITIVE ALTERNATE THREE
ADDENDUM No. TWO MAY 21, 2012



TETRA TECH
www.tetrattech.com
230 South Franklin, Suite 212
Juneau, Alaska 99801
Phone: 907-586-6400 Fax: 907-463-3677

DOWL HKM

CITY/BOROUGH OF JUNEAU
ALASKA'S CAPITAL CITY
DEPARTMENT OF ENGINEERING

MAIN STREET IMPROVEMENTS
SECOND TO FIFTH STREET
CONTRACT NO. E12-167

ALASKA OFFICE BUILDING
ENTRANCE CANOPY
SECTIONS AND DETAILS

SHEET NO.
S.102A
44A
of
44

JOB NO: J70456 DRAWN BY: CAD DESIGNED BY: MMW CHECKED BY: DATE: MAY, 2012