

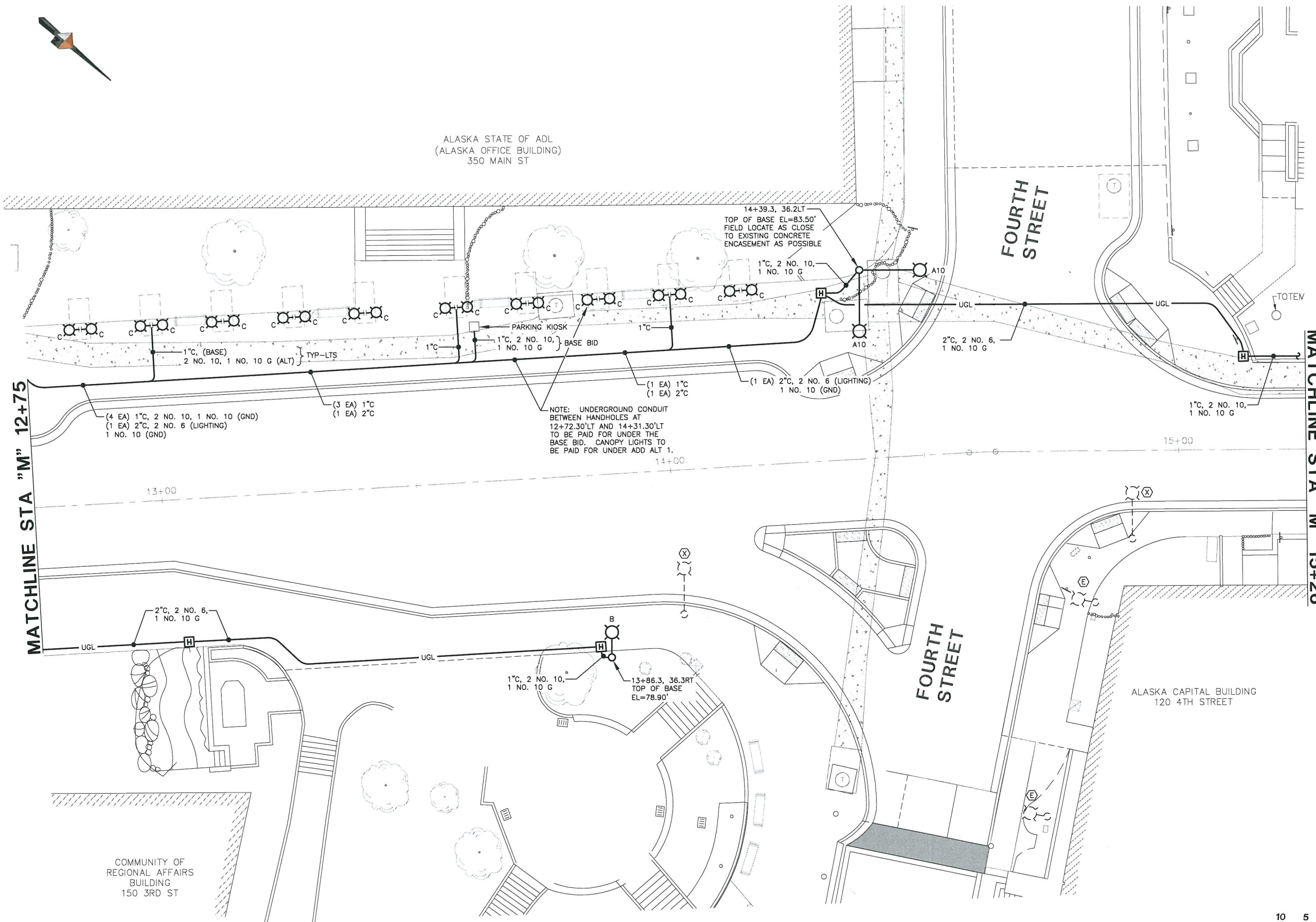


ALASKA STATE OF ADL  
(ALASKA OFFICE BUILDING)  
350 MAIN ST

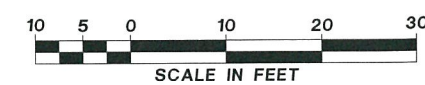
FOURTH STREET

MATCHLINE STA "M" 15+26

MATCHLINE STA "M" 12+75

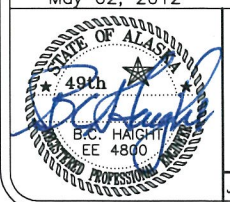


NOTE: UNDERGROUND CONDUIT BETWEEN HANDHOLES AT 12+72.30'LT AND 14+31.30'LT TO BE PAID FOR UNDER THE BASE BID. CANOPY LIGHTS TO BE PAID FOR UNDER ADD 1.



May 02, 2012

F:\Projects\119 DOW\23 Main Street 2nd to 5th\Drawings\Working\E.302.dwg 2012-5-2 15:09:32



**HAIGHT & ASSOCIATES**  
CONSULTING ELECTRICAL ENGINEERS  
526 Main Street, Juneau, AK 99801  
(907) 586-9788

**DOWL HKM**  
536B Commercial Blvd Juneau, Alaska 99801  
PHONE (907) 780-3533 FAX (907) 780-3535

**CITY/BOROUGH OF JUNEAU**  
ALASKA'S CAPITAL CITY  
**DEPARTMENT OF ENGINEERING**

**MAIN STREET IMPROVEMENTS  
SECOND TO FIFTH STREET  
CONTRACT NO. E12-167**

**LIGHTING PLAN - MAIN STREET  
STA "M" 12+75 TO STA "M" 15+26**

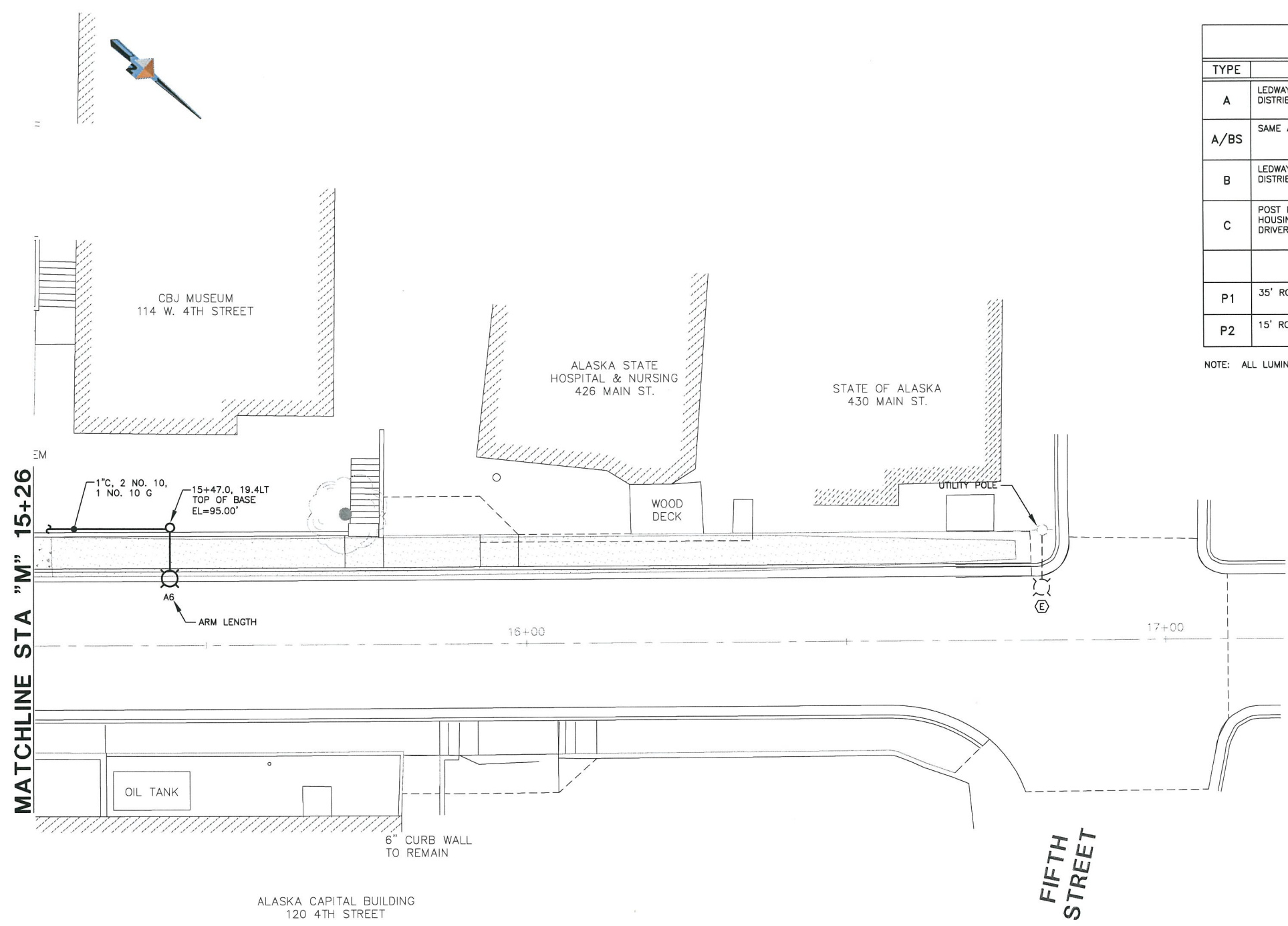
SHEET NO. **E.302**  
**34** of **44**

JOB NO: J70456 DRAWN BY: PEL DESIGNED BY: BCH, PEL CHECKED BY: BCH DATE: APRIL 2012

## LUMINAIRE SCHEDULE

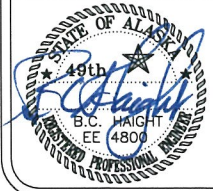
TYPE	DESCRIPTION	MANUFACTURER	LAMPS	REMARKS
A	LEDWAY STREETLIGHT, ALUMINUM HOUSING, TYPE III DISTRIBUTION, INTEGRAL ELECTRONIC DRIVER, 120 LEDs	BETA LED STR-LWY-3M-HT-12-D-UL-SV-525	195W WHITE LED 6000K, CRI 70	MOUNT (1 EA) ON EXISTING 35' POLE. MOUNT (3 EA) ON NEW POLE "P1".
A/BS	SAME AS TYPE A, WITH BACKLIGHT SHIELD	BETA LED STR-LWY-3MB-HT-12-D-UL-SV-525	195W WHITE LED 6000K, CRI 70	MOUNT (1 EA) ON NEW POLE "P1".
B	LEDWAY STREETLIGHT, ALUMINUM HOUSING, TYPE III DISTRIBUTION, INTEGRAL ELECTRONIC DRIVER, 30 LEDs	BETA LED STR-LWY-3M-HT-03-D-UL-SV	35W WHITE LED 6000K, CRI 70	MOUNT ON NEW POLE "P2".
C	POST MOUNTED SCENCE, SOLID SATIN ALUMINUM HOUSING, BIDIRECTIONAL DISTRIBUTION, ELECTRONIC DRIVER FITS IN JUNCTION BOX	EDGE LIGHTING TAOS-W-SQ-LED-SA	(2) 3W WHITE LED 3182K, CRI 84	MOUNT ON CANOPY POST PER DETAIL SHEET E.305.
P1	35' ROUND TAPPED STEEL POLE, WITH 6' OR 10' ARM	AMERON INTERNATIONAL N3510		
P2	15' ROUND TAPPED STEEL POLE	GARMIRE GRT 15		

NOTE: ALL LUMINAIRE MOUNTING HEIGHTS ARE TO THE BOTTOM OF THE LUMINAIRE, UNLESS OTHERWISE NOTED AND OR APPLICABLE.



F:\Projects\119 DOWL\23 Main Street 2nd to 5th\Drawings\Working\E.303.dwg 2012-5-2 15:08:27

May 02, 2012



**HAIGHT & ASSOCIATES**  
CONSULTING ELECTRICAL ENGINEERS  
526 Main Street, Juneau, AK 99801  
(907) 588-9788

**DOWL HKM**  
5368 Commercial Blvd Juneau, Alaska 99801  
PHONE (907) 780-3533 FAX (907) 780-3535

**CITY/BOROUGH OF JUNEAU**  
ALASKA'S CAPITAL CITY  
**DEPARTMENT OF ENGINEERING**

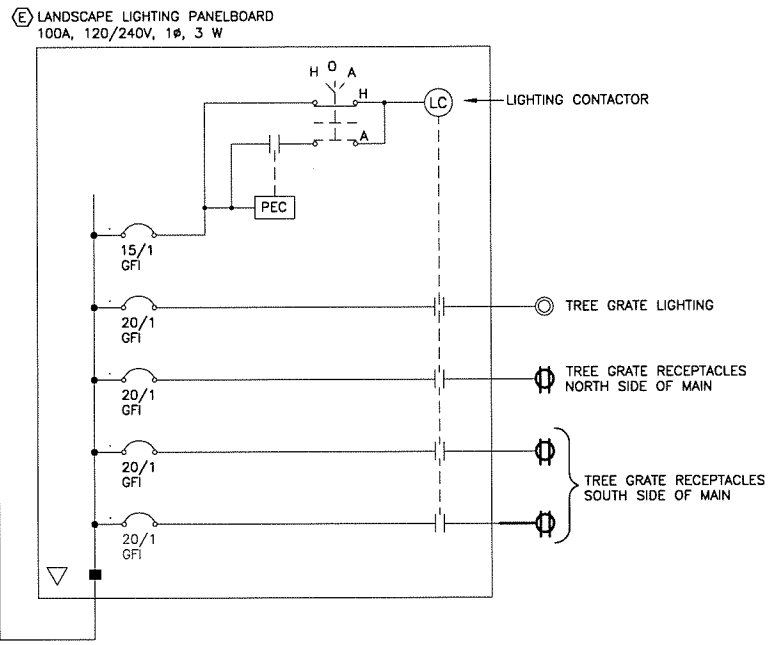
**MAIN STREET IMPROVEMENTS  
SECOND TO FIFTH STREET  
CONTRACT NO. E12-167**

**LIGHTING PLAN - MAIN STREET  
STA "M" 15+26 TO E.O.P**

SHEET NO.  
**E.303**  
**35** of **44**

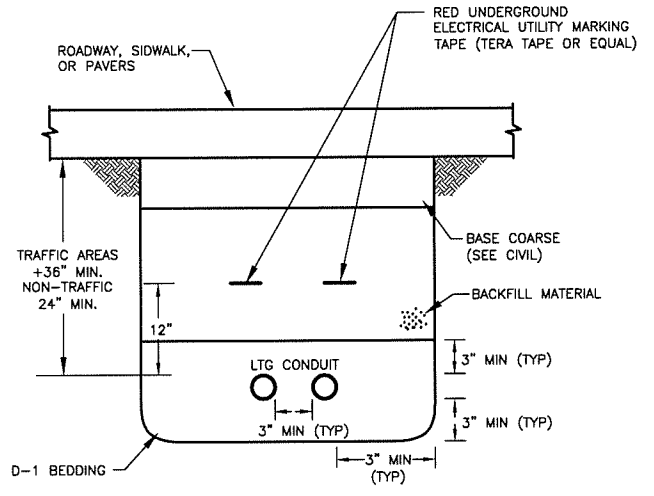
JOB NO: J70456 DRAWN BY: PEL DESIGNED BY: BCH, PEL CHECKED BY: BCH DATE: APRIL 2012

F:\Projects\119 DOWL\23 Main Street 2nd to 5th Drawings\Working\E-304.dwg 2012-5-2 15:08:22



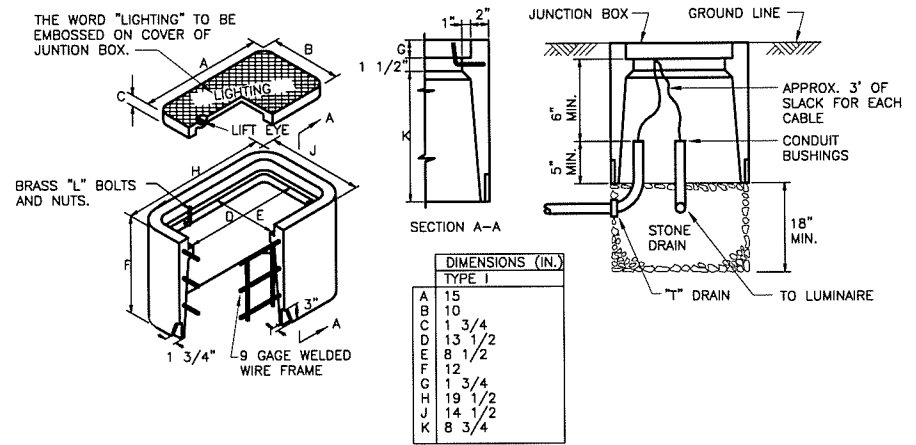
**5 SCHEMATIC DIAGRAM - LIGHTING SYSTEM CONTROLS**  
NO SCALE

- NOTES:
- TRANSFER POWER SERVICE AND CONTROLS FOR THE STREET LIGHTING FROM THE EQUIPMENT MOUNTED TO THE SIDE OF THE ADOT/PF LOAD CENTER AT THE INTERSECTION OF EGAN DRIVE AND MAIN STREET TO THE EXISTING LOAD CENTER AT SECOND STREET AND MAIN STREET.
  - PROVIDE A NEW CABINET WITH PANELBOARD AND CONTROLS. EXTEND STRUT ON THE EXISTING STAND TO SUPPORT THE NEW CABINET. REROUTE SPARE 2"C FROM EXISTING CABINET TO THE NEW CABINET.

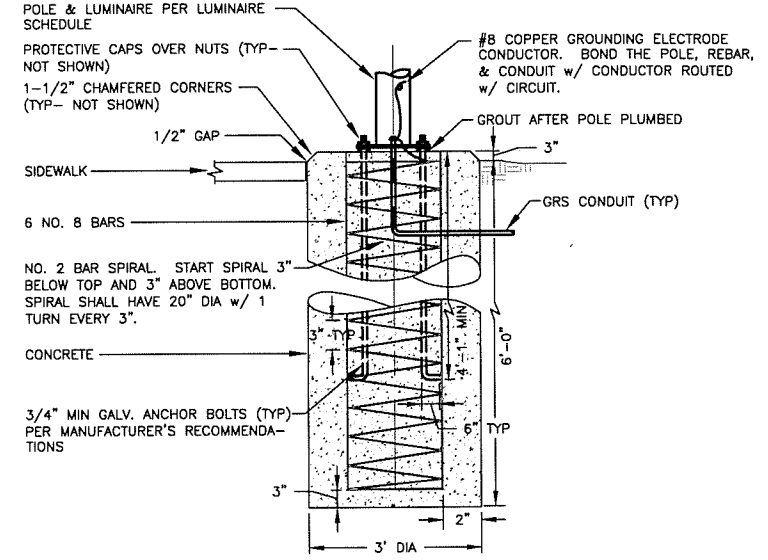


**4 DETAIL - TRENCH**  
NO SCALE

NOTE:  
1. PROVIDE AND COMPACT D-1 BEDDING & BACKFILL PER SPECIFICATIONS.

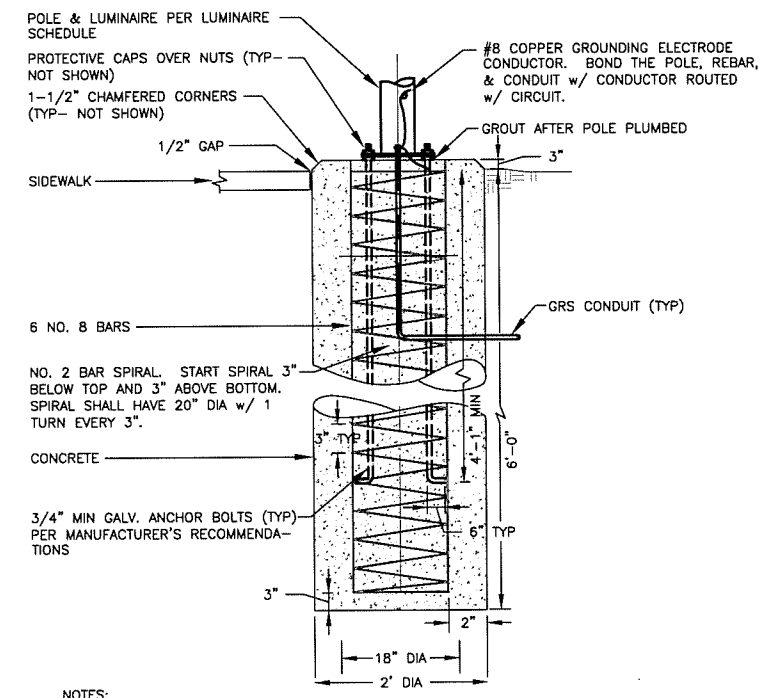


**3 DETAIL - HANDHOLE**  
NO SCALE



**2 DETAIL - TYPE A POLE BASE FOUNDATION**  
NO SCALE

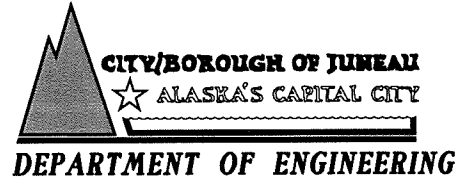
NOTES:  
1. BACKFILL w/ N.F.S. SAND & GRAVEL COMPACTED TO 95% MODIFIED PROCTOR DENSITY.  
2. ANCHOR BOLTS TO MEET ATSM-A36 w/ MINIMUM YIELD STRESS OF 36.0 KSI.



**1 DETAIL - TYPE B POLE BASE FOUNDATION**  
NO SCALE

NOTES:  
1. BACKFILL w/ N.F.S. SAND & GRAVEL COMPACTED TO 95% MODIFIED PROCTOR DENSITY.  
2. ANCHOR BOLTS TO MEET ATSM-A36 w/ MINIMUM YIELD STRESS OF 36.0 KSI.

May 02, 2012



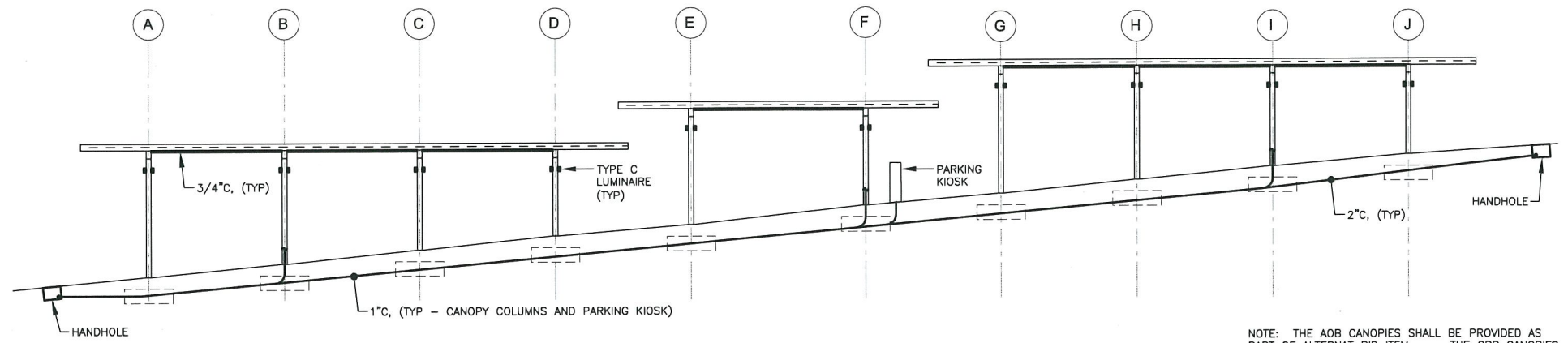
**MAIN STREET IMPROVEMENTS  
SECOND TO FIFTH STREET  
CONTRACT NO. E12-167**

**DETAILS - LIGHTING**

SHEET NO.  
**E.304**  
**36** of **44**

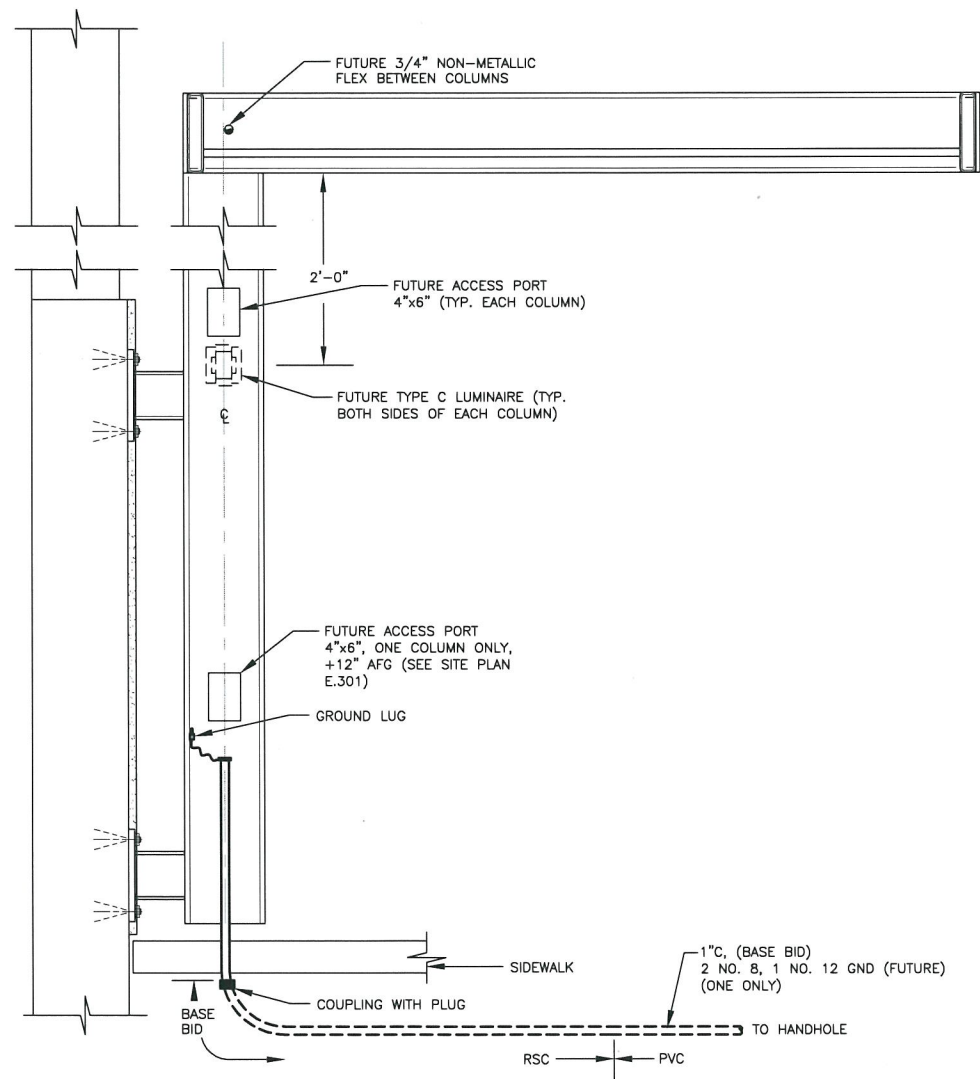
JOB NO: J70456 DRAWN BY: PEL DESIGNED BY: BCH, PEL CHECKED BY: BCH DATE: APRIL 2012

F:\Projects\119 DOWL\23 Main Street 2nd to 5th\Drawings\Working\E-305.dwg 2012-5-2 15:10:06

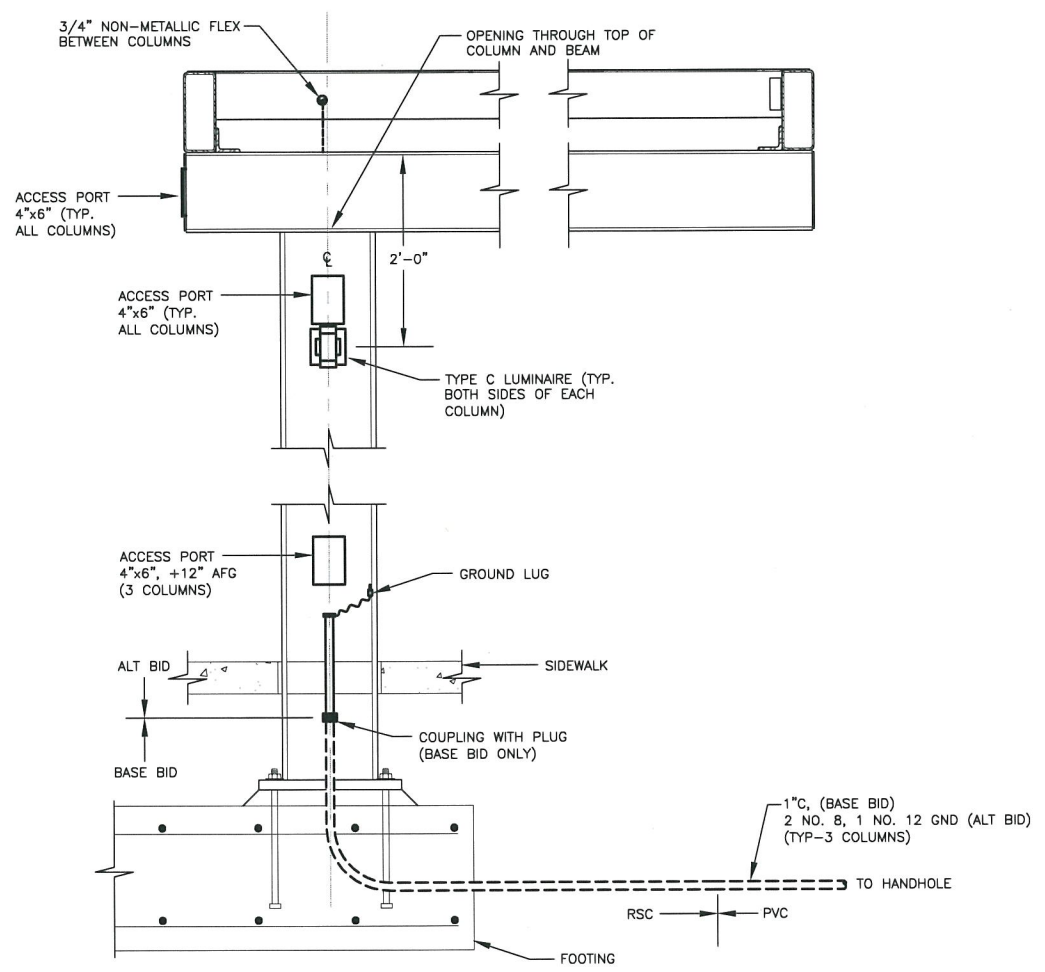


1 ELEVATION - AOB CANOPIES  
NO SCALE

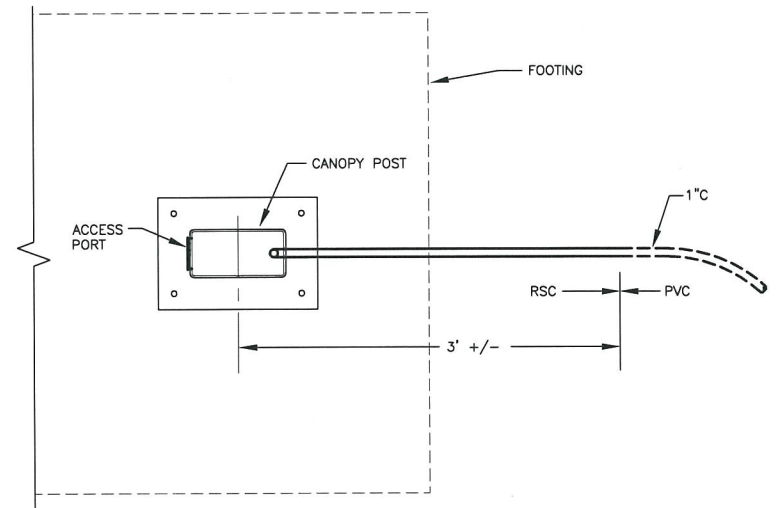
NOTE: THE AOB CANOPIES SHALL BE PROVIDED AS PART OF ALTERNAT BID ITEM \_\_\_\_\_. THE CPB CANOPIES WILL BE PROVIDED IN THE FUTURE. THE BASE BID REQUIRES INSTALLATION OF CONDUITS TO LOCATIONS SHOWN.



4 SECTION - CPB CANOPIES  
NO SCALE



3 SECTION - AOB CANOPIES  
NO SCALE



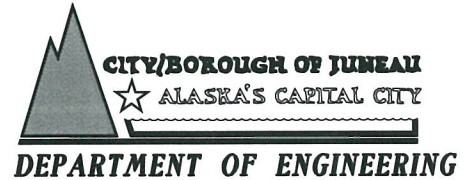
2 SECTION - AOB CANOPIES  
NO SCALE

May 02, 2012



**HAIGHT & ASSOCIATES**  
CONSULTING ELECTRICAL ENGINEERS  
526 Main Street, Juneau, AK 99801  
(907) 586-9788

**DOWL HKM**  
5368 Commercial Blvd Juneau, Alaska 99801  
PHONE (907) 780-3533 FAX (907) 780-3535



**MAIN STREET IMPROVEMENTS  
SECOND TO FIFTH STREET  
CONTRACT NO. E12-167**

**DETAILS - CANOPY LIGHTING**

SHEET NO.  
**E.305**  
37 of 44

JOB NO: J70456 DRAWN BY: PEL DESIGNED BY: BCH, PEL CHECKED BY: BCH DATE: APRIL 2012