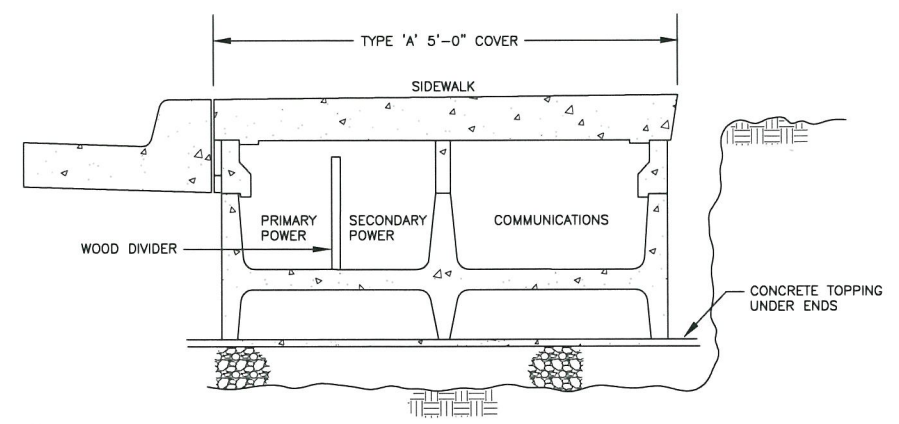
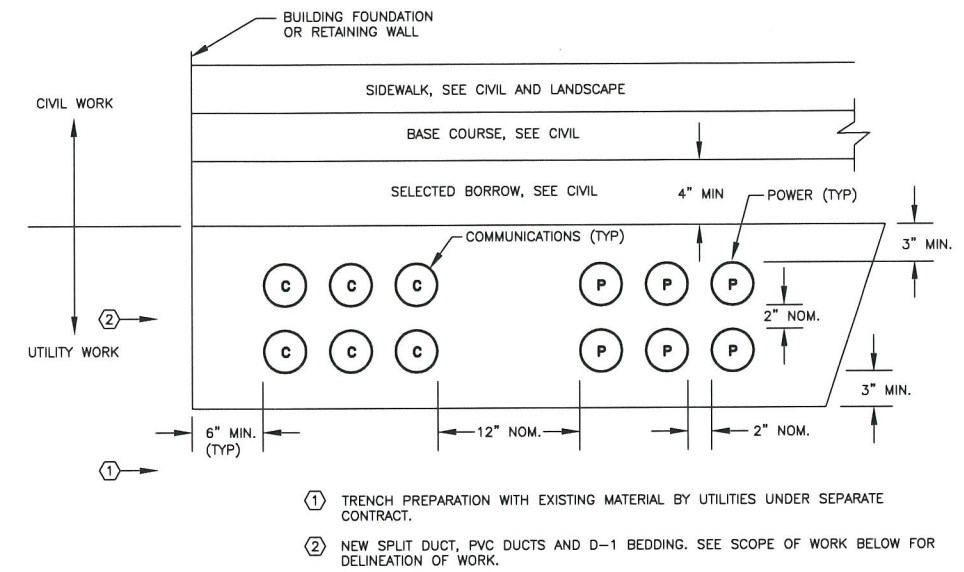


LEGEND

ABBREVIATIONS:	
AFG	ABOVE FINISHED GRADE
PE	PHOTOELECTRIC
UON	UNLESS OTHERWISE NOTED
WP	WEATHERPROOF
(E)	EXISTING
(N)	NEW
SWITCHING:	
(PE)	PHOTOELECTRIC CELL
LIGHTING:	
(L)	EXTERIOR POLE MOUNTED LUMINAIRE
POWER:	
(H)	HANDHOLE
(CB)	CIRCUIT BREAKER
(C)	CONTACT
— UGP —	UNDERGROUND PRIMARY
— UGE —	UNDERGROUND SECONDARY
— UGC —	UNDERGROUND COMMUNICATION
— UGL —	UNDERGROUND LIGHTING

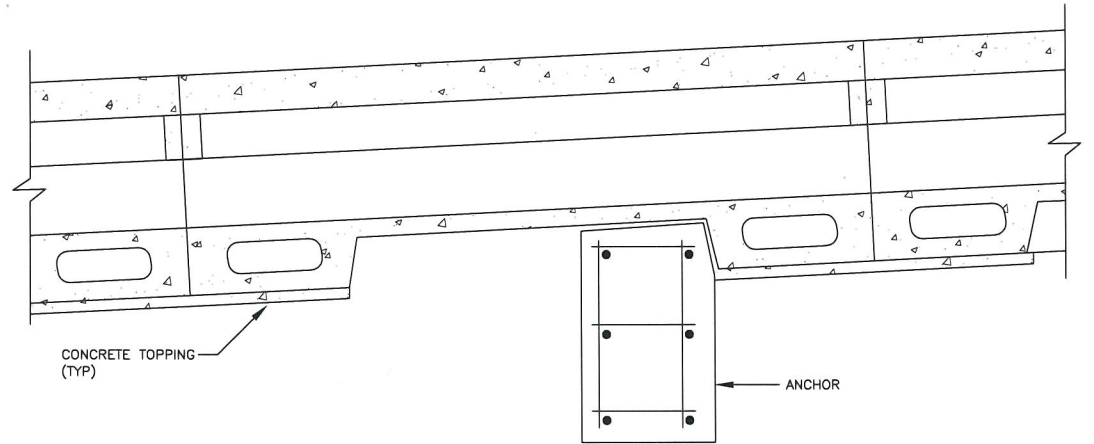


1 SECTION - EXISTING UTILIWALK (TYP)
NO SCALE



3 SECTION - TYPICAL UTILITY TRENCH
NO SCALE

- ① TRENCH PREPARATION WITH EXISTING MATERIAL BY UTILITIES UNDER SEPARATE CONTRACT.
- ② NEW SPLIT DUCT, PVC DUCTS AND D-1 BEDDING. SEE SCOPE OF WORK BELOW FOR DELINEATION OF WORK.



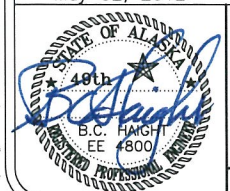
2 PROFILE SECTION - EXISTING UTILIWALK
NO SCALE

SCOPE OF WORK

- UTILITY WORK UNDER THIS CONTRACT:**
- COORDINATION OF ALL WORK BY THE UTILITIES.
 - DISPOSAL OF UTILIWALK REMOVED BY THE UTILITIES.
 - FURNISHING BEDDING MATERIAL TO THE SITE FOR INSTALLATION BY THE UTILITIES.
- UTILITY WORK UNDER SEPARATE CONTRACT:**
- REMOVAL OF UTILIWALK COVERS AND STOCKPILE FOR REMOVAL BY THE CONTRACTOR.
 - LIFTING AND SUPPORTING OF UTILITY CABLES.
 - REMOVAL OF UTILIWALK AND STOCKPILE FOR REMOVAL BY THE CONTRACTOR.
 - PREPARATION OF THE TRENCH FOR CONDUIT RELOCATION.
 - PROVISION AND INSTALLATION OF SPLIT DUCTS AROUND THE EXISTING CABLES AND CONVENTIONAL SPARE DUCTS.
 - INSTALLATION OF BEDDING MATERIAL AROUND THE RELOCATED DUCTS.
- LIGHTING UNDER THIS CONTRACT:**
- REMOVE EXISTING CONDUIT AND HANDHOLES SERVING EXISTING LIGHTING IN THE PROJECT AREA.
 - PROVIDE NEW CONDUIT, HANDHOLES, JUNCTION BOXES AND CONDUCTORS FOR NEW LIGHTING.
 - PROVIDE NEW LUMINAIRES, POLES AND BASES.
 - PROVIDE NEW LUMINAIRES AND CIRCUITS FOR CANOPY LIGHTING (ALT BID).

F:\Projects\119 DOWL\23 Main Street 2nd to 5th Drawings\Working\E.001.dwg 2012-5-2 15:10:01

May 02, 2012



HAIGHT & ASSOCIATES
CONSULTING ELECTRICAL ENGINEERS
526 Main Street, Juneau, AK 99801
(907) 586-9786

DOWL HKM
5368 Commercial Blvd Juneau, Alaska 99801
PHONE (907) 780-3533 FAX (907) 780-3535

CITY/BOROUGH OF JUNEAU
ALASKA'S CAPITAL CITY
DEPARTMENT OF ENGINEERING

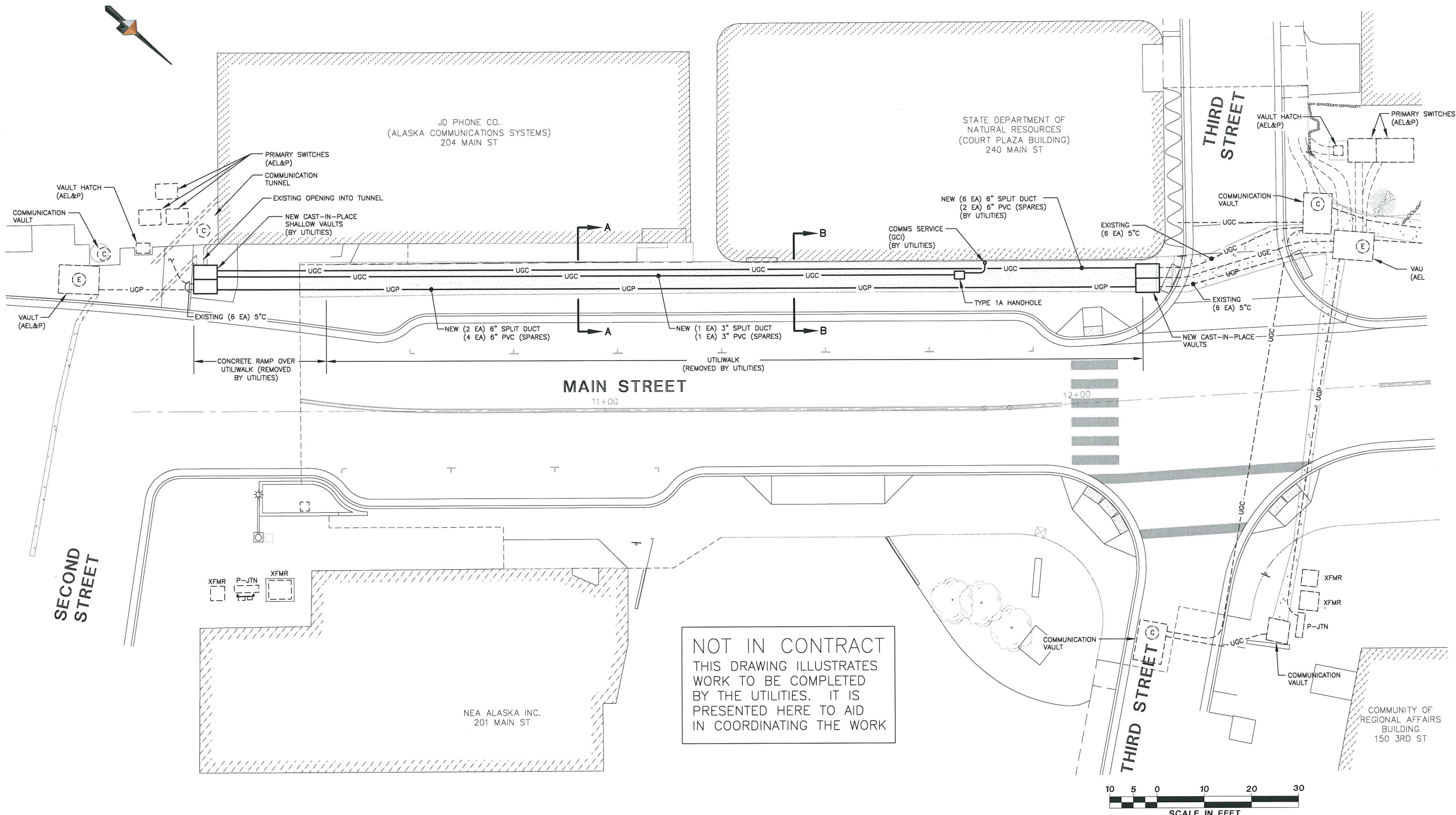
**MAIN STREET IMPROVEMENTS
SECOND TO FIFTH STREET
CONTRACT NO. E12-167**

**LEGEND, DETAILS,
SCOPE OF WORK**

SHEET NO. **E.001**
29 of **44**

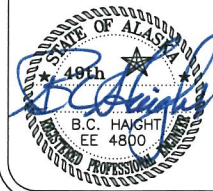
JOB NO: J70456 DRAWN BY: PEL DESIGNED BY: BCH, PEL CHECKED BY: BCH DATE: APRIL 2012

F:\Projects\119 DOW\23 Main Street 2nd to 5th\Drawings\Working\E.201.dwg 2012-5-2 15:06:55



NOT IN CONTRACT
 THIS DRAWING ILLUSTRATES
 WORK TO BE COMPLETED
 BY THE UTILITIES. IT IS
 PRESENTED HERE TO AID
 IN COORDINATING THE WORK

May 02, 2012



HAIGHT & ASSOCIATES
 CONSULTING ELECTRICAL ENGINEERS
 526 Main Street, Juneau, AK 99801
 (907) 586-9788

DOWL HKM
 5368 Commercial Blvd Juneau, Alaska 99801
 PHONE (907) 780-3533 FAX (907) 780-3535

CITY/BOROUGH OF JUNEAU
 ALASKA'S CAPITAL CITY
DEPARTMENT OF ENGINEERING

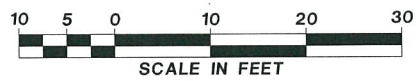
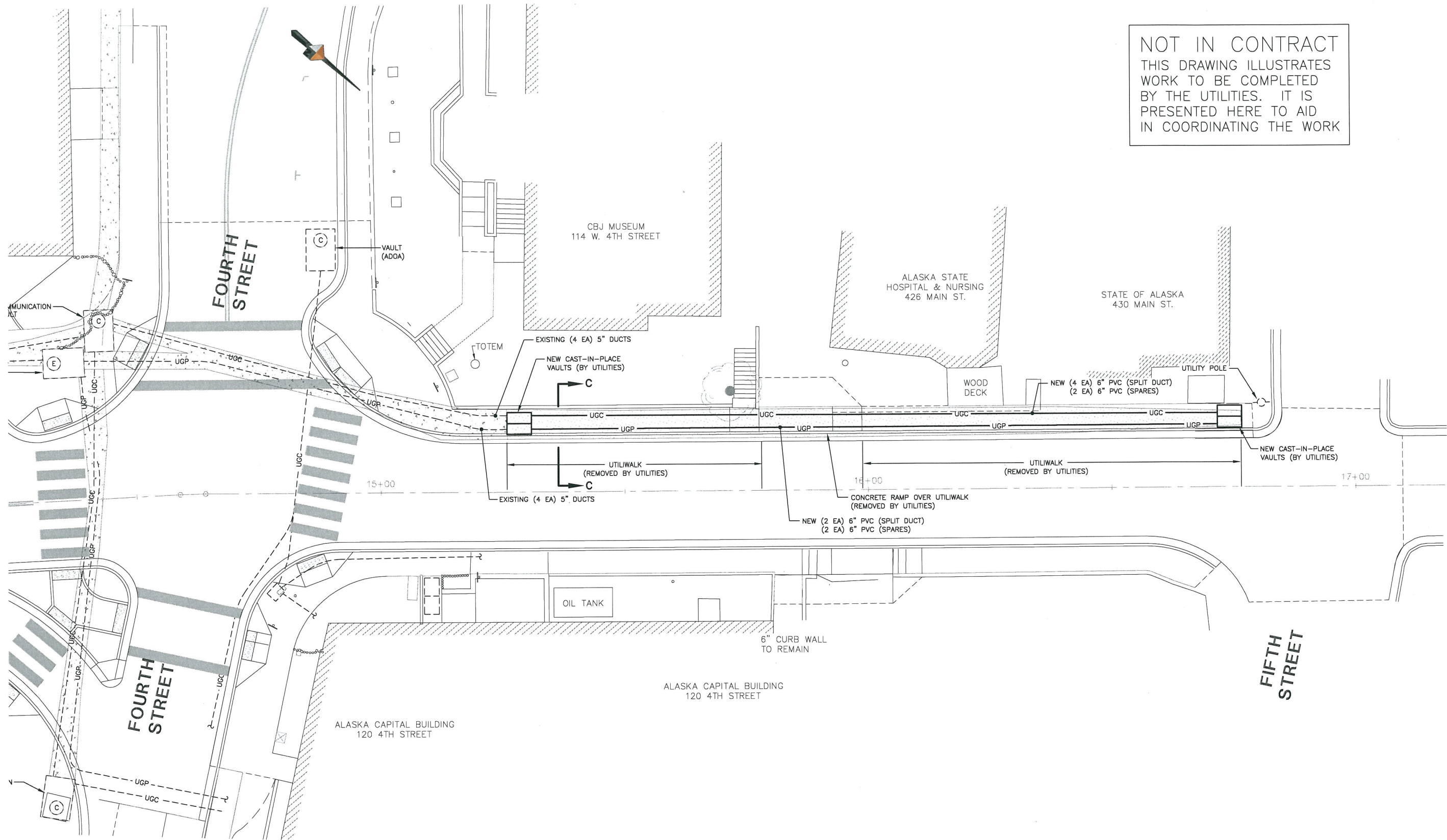
**MAIN STREET IMPROVEMENTS
 SECOND TO FIFTH STREET
 CONTRACT NO. E12-167**

**UTILITIES PLAN - MAIN STREET
 B.O.P. TO STA "M" 12+75
 NOT IN CONTRACT**

SHEET NO.
E.201
 30 of 44

JOB NO: J70456 | DRAWN BY: PEL | DESIGNED BY: BCH, PEL | CHECKED BY: BCH | DATE: APRIL 2012

NOT IN CONTRACT
 THIS DRAWING ILLUSTRATES
 WORK TO BE COMPLETED
 BY THE UTILITIES. IT IS
 PRESENTED HERE TO AID
 IN COORDINATING THE WORK



May 02, 2012



HAIGHT & ASSOCIATES
 CONSULTING ELECTRICAL ENGINEERS
 526 Main Street, Juneau, AK 99801
 (907) 586-9788

DOWL HKM
 5368 Commercial Blvd Juneau, Alaska 99801
 PHONE (907) 780-3533 FAX (907) 780-3535

CITY/BOROUGH OF JUNEAU
 ALASKA'S CAPITAL CITY
DEPARTMENT OF ENGINEERING

**MAIN STREET IMPROVEMENTS
 SECOND TO FIFTH STREET
 CONTRACT NO. E12-167**

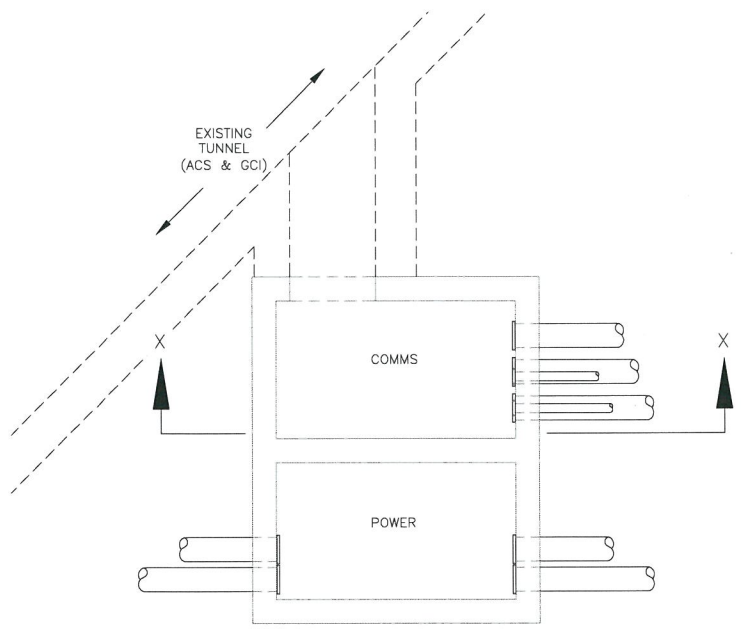
**UTILITIES PLAN - MAIN STREET
 STA "M" 14+75 TO E.O.P.
 NOT IN CONTRACT**

SHEET NO. **E.202**
31 of **44**

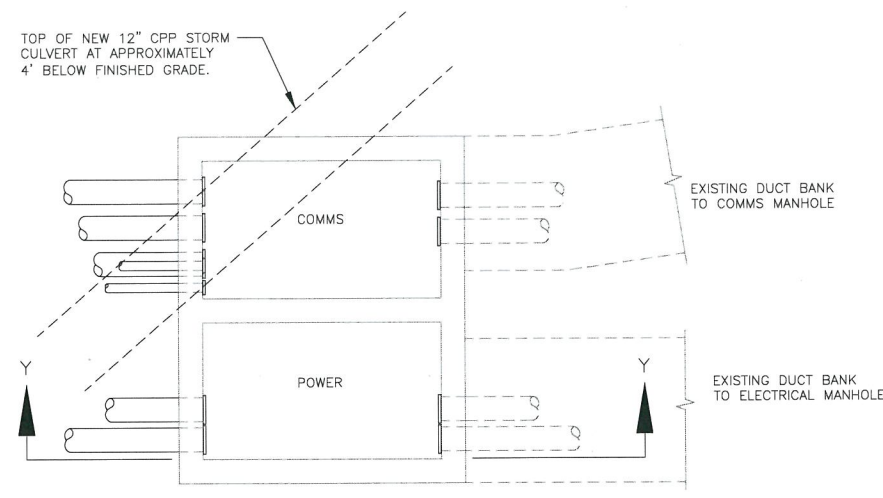
JOB NO: J70456 DRAWN BY: PEL DESIGNED BY: BCH, PEL CHECKED BY: BCH DATE: APRIL 2012

F:\Projects\119 DOWL\23 Main Street 2nd to 5th\Drawings\Working\E.202.dwg 2012-5-2 15:08:49

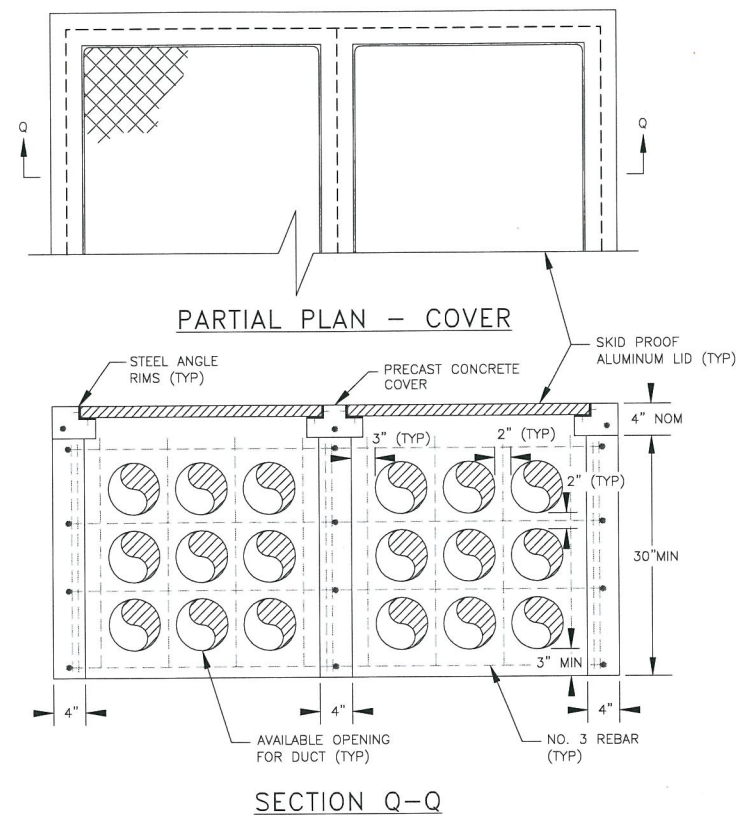
NOT IN CONTRACT
 THIS DRAWING ILLUSTRATES
 WORK TO BE COMPLETED
 BY THE UTILITIES. IT IS
 PRESENTED HERE TO AID
 IN COORDINATING THE WORK



5 DETAIL: VAULTS AT ACS NO SCALE

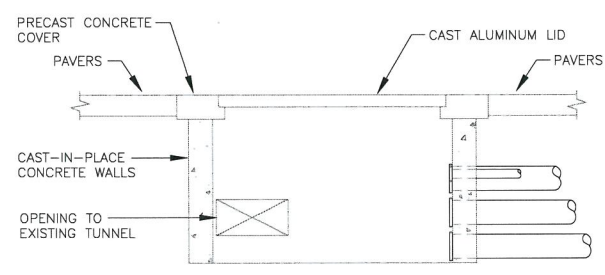


7 DETAIL: VAULTS AT 3rd STREET NO SCALE

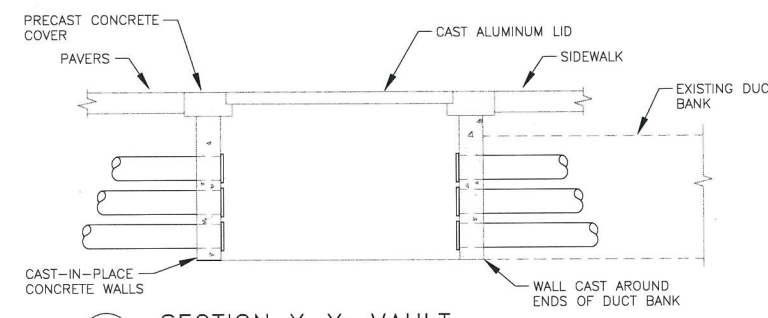


PARTIAL PLAN - COVER

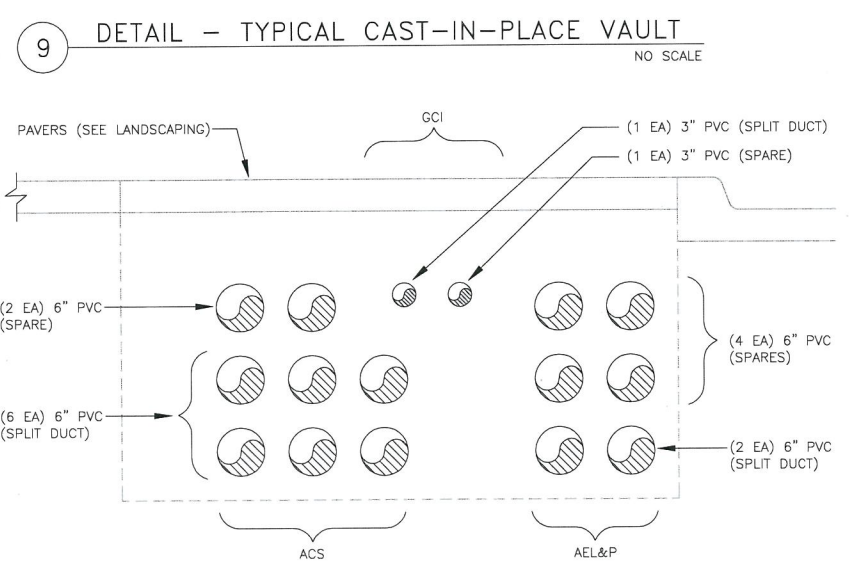
SECTION Q-Q



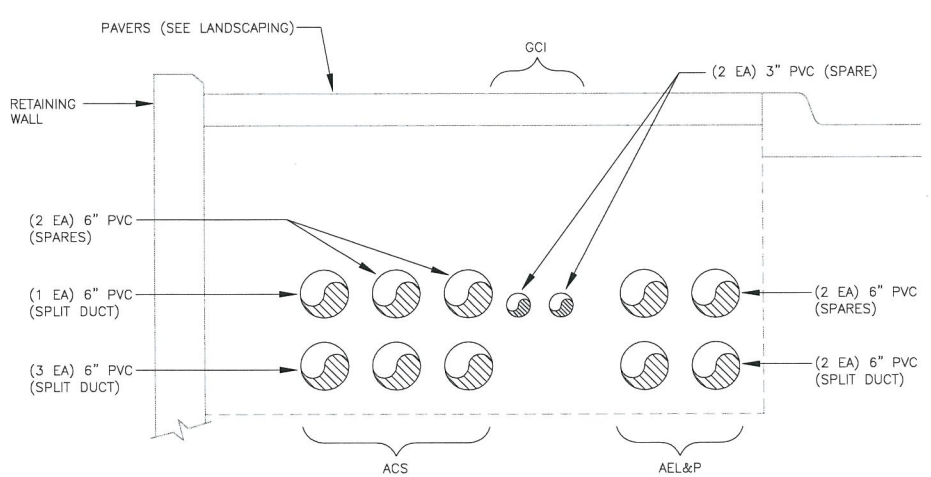
6 SECTION X-X: VAULT NO SCALE



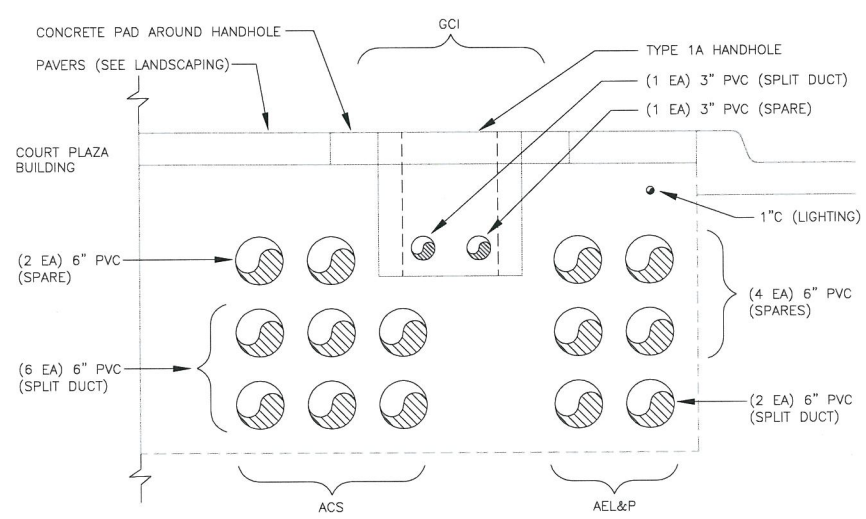
8 SECTION Y-Y: VAULT NO SCALE



9 DETAIL - TYPICAL CAST-IN-PLACE VAULT NO SCALE



4 SECTION C-C: TRENCH SECTION NO SCALE

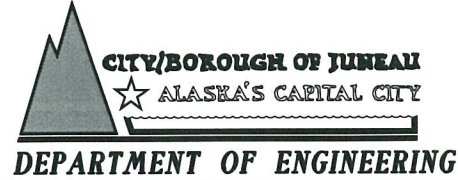
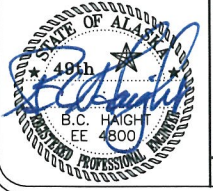


3 SECTION B-B: TRENCH SECTION NO SCALE

2 SECTION A-A: TRENCH SECTION NO SCALE

F:\Projects\119 DOWL\23 Main Street 2nd to 5th Drawings\Working\E.203.dwg 2012-5-2 15:09:44

May 02, 2012



**MAIN STREET IMPROVEMENTS
 SECOND TO FIFTH STREET
 CONTRACT NO. E12-167**

**DETAILS - UTILITIES
 NOT IN CONTRACT**

SHEET NO.
E.203
 32 of 44

JOB NO: J70456 DRAWN BY: PEL DESIGNED BY: BCH, PEL CHECKED BY: BCH DATE: APRIL 2012

