



## ADDENDUM TO THE CONTRACT

for the

### Marie Drake School Renovation

Contract No. E12-205

**ADDENDUM NO.:** ONE

**CURRENT DEADLINE FOR BIDS:**  
March 30, 2012

**PREVIOUS ADDENDA:** NONE

**ISSUED BY:** City and Borough of Juneau  
ENGINEERING DEPARTMENT  
155 South Seward Street  
Juneau, Alaska 99801

**DATE ADDENDUM ISSUED:** March 23, 2012

The following items of the contract are modified as herein indicated. All other items remain the same. This addendum has been issued and is posted online. Please refer to the CBJ Engineering Contracts Division webpage at: <http://www.juneau.org/engineeringftp/contracts/Contracts.php>

#### **INFORMATION ITEM:**

A copy of the complete HazMat report "Limited Hazardous Building Materials Assessment Survey, for Marie Drake School, prepared by Nortech may be found at the City & Borough of Juneau FTP website at: [http://ftp.ci.juneau.ak.us/pub/CBJ\\_Bid\\_Documents/Marie\\_Drake\\_Hazmat\\_Report\[1\]](http://ftp.ci.juneau.ak.us/pub/CBJ_Bid_Documents/Marie_Drake_Hazmat_Report[1])

#### **PROJECT MANUAL:**

- Item No. 1: SECTION 00005 – TABLE OF CONTENTS. **Add** SECTION 101423 - PANEL SIGNAGE, attached to this Addendum.
- Item No. 2: SECTION 00800 – SUPPLEMENTARY GENERAL CONDITIONS, SGC 6.6 – PERMITS. **Add** the following:
- “D. The OWNER shall apply for, and obtain, the necessary building permit for this Project; however, the CONTRACTOR is responsible for scheduling and coordinating all necessary inspections and obtaining final permit approval. The CBJ Inspection number is 586-1703. All other provisions of this section remain in effect.”
- Item No. 3: SECTION 14000 – QUALITY REQUIREMENTS, PART 1 – GENERAL, Article 1.8 – SPECIAL TESTS AND INSPECTIONS, Paragraph A. **Add** “Unless otherwise noted” before “owner will engage in a qualified special inspector...”

Item No. 4: SECTION 017700 – CLOSEOUT PROCEDURES. **Replace** 1.4 – CLOSEOUT SUBMITTALS with the following:

“1.4 FINAL ACCEPTANCE

- A. Before requesting inspection for certification of final acceptance and final payment, complete and submit the following:
1. Submit final payment request.
  2. Submit a final Change Order request.
  3. Submit a copy of the final inspection list stating that each item has been completed or otherwise resolved for acceptance.
  4. Submit final meter readings for utilities, a record of stored fuel, and similar data as of Substantial Completion.
  5. Submit consent of surety to final payment.
  6. Submit evidence of continuing insurance coverage complying with insurance requirements.
  7. Written guarantees, where required.
  8. Maintenance stock items; spare parts; special tools, where required.
  9. Certificates of inspection and acceptance by local governing agencies having jurisdiction.
  10. Completed Certificate of Compliance and Release for the CONTRACTOR involved in the WORK included as part of this section, form attached with this section.
  11. Final Subcontractor list complete with final subcontract amounts and include all equipment rentals (with operators).
  12. Alaska Department of Revenue Corporate Income Tax Clearance letter for the Prime CONTRACTOR
  13. Before final payment can be made, the CONTRACTOR shall supply a copy of the "Notice of Completion of Public Works" form approved by Wage and Hour Administration of the Labor Standards and Safety Division of the Alaska Department of Labor and Workforce Development.
  14. Alaska Department of Labor Employment Security Tax Clearance letter for the Prime CONTRACTOR and all Subcontractors, a copy of which is located at the end of Section 00800 – Supplementary General Conditions.
  15. Submit original Items 11, 12, 13, and 14 to Jennifer Mannix-Contracts Administrator, CBJ- Engineering.”

**Change** COMPLIANCE CERTIFICATE AND RELEASE FORM as follows:

“PROJECT: MARIE DRAKE SCHOOL RENOVATION”

Item No. 5: SECTION 024000 – LIMITED HAZARDOUS MATERIALS ABATEMENT, PART 1 – GENERAL, Article 1.1 – SCOPE OF WORK, Paragraph D. **Add** the following:

- “• Main Floor – Corridor 410
- Main Floor 1A – Corridor 226 and 254
  - Main Floor 1A – Classroom 229 and 231
  - Main Floor 1A - Conference 230
  - Second Floor – Corridor 321”

Item No. 6: SECTION 054000 – COLD FORMED METAL FRAMING, PART 3 – EXECUTION, Article 3.5 - FIELD QUALITY CONTROL, Paragraph A. **Change** to read

“Testing and Inspecting: Engage a qualified testing and inspecting agency to perform tests and inspections and to submit reports.”

Item No. 7: SECTION 095113 - ACOUSTICAL PANEL CEILINGS, PART 2 – PRODUCTS, Article 2.3 – ACOUSTICAL PANELS – ACP, Paragraph I. **Change** Module Size to “24 by 24 inches”.

Item No. 8: SECTION 097200 - WALL COVERINGS. PART 2 – PRODUCTS. **Add** Section 2.5 - WOVEN GLASS FIBER WALL COVERING – FRP.

**“2.5 – WOVEN GLASS FIBER WALL COVERING – FRP**

A. *General: Fiberglass reinforced thermosetting polyester resin panel sheets complying with ASTM D 5319.*

1. *Products: Subject to compliance with requirements provide the following or approved equal:*

a. *Marlite, standard FRP.*

B. *Panels:*

1. *Width: 4'-0" nominal*
2. *Thickness: 0.090 inch*
3. *Height: As indicated on drawings.*
4. *Texture: Pebbled.*

C. *Colors, Textures, and Patterns: As selected by Architect from manufacturer's full range*

D. *Moldings: Aluminum trim: Heavy weight extruded aluminum 6063-T5 alloy prefinished at the factory, all profiles as recommended by manufacturer for conditions.*

E. *Accessories: Fasteners, adhesive, and sealant as recommended by panel manufacturer.”*

Item No. 9: SECTION 101100 – VISUAL DISPLAY SURFACES, PART 2 – PRODUCTS, Article 2.4 – MARKERBOARD AND TACKBOARD ACCESSORIES, Paragraph C, Subparagraph 4. **Change** from one flag holder to two per classroom.

Item No. 10: SECTION 102113 – TOILET COMPARTMENTS, PART 2 – PRODUCTS, Article 2.2 – PHENOLIC-CORE UNITS, Paragraph C. **Change** “Wall Hung” to “Post-to-Ceiling”

Item No. 11: SECTION 115213 – PROJECTION SCREENS, PART 2 – PRODUCTS, Article 2.2 – MANUALLY OPERATED, FRONT-PROJECTION SCREENS, Paragraph B. **Add** the following sentence to the end of paragraph.

“Coordinate the mounting with marker boards to provide sufficient clearance to avoid conflict with tack strip accessories.”

- Item No. 12: SECTION 224000 – PLUMBING FIXTURES, PART 2 – PRODUCTS, Article 2.5 – SINKS, Paragraph C. In first sentence **change** “6 inch” **to** ‘7 inch’. **Add** to end of the paragraph, “LR-1716”.
- Item No. 13: SECTION 230593 – TESTING, ADJUSTING, AND BALANCING FOR HVAC, PART 1 – GENERAL, Article 1.3 – SUMMARY, Paragraph A. **Delete** and **replace** with following:
- “A. Adjust and balance all building air systems in Project Areas. Adjust and balance all building hydronic systems in Project Areas. Air volumes are shown on the plans. Flow rates are shown in the schedules on Sheet M001.”
- Item No. 14: SECTION 262816 – ENCLOSED SWITCHES AND CIRCUIT BREAKERS, PART 1 – GENERAL, Article 1.5 – CLOSOUT SUBMITTALS, Paragraph A. **Delete** the final sentence of this paragraph.
- Item No. 15: SECTION 265100 – INTERIOR LIGHTING, PART 2 – PRODUCTS, Article 2.3 – BALLASTS FOR LINEAR FLUORESCENT LAMPS, Paragraph C. **Change** the first sentence as follows:
- “Electronic Programmed-Start Ballasts for T8 Lamps: Comply with ANSI C82.11 and the following:”
- Item No. 16: SECTION 265100 – INTERIOR LIGHTING, PART 2 – PRODUCTS, Article 2.5 - FLOURESCENT LAMPS. **Delete** Paragraphs A and B. **Add** new paragraph A as follows:
- “A. T8 rapid-start lamps, rated 32 W maximum, nominal length of 48 inches (1220 mm), 2800 initial lumens (minimum), CRI 85 (minimum), color temperature 3500 degrees K, and average rated life 20,000 hours unless otherwise indicated.”
- Item No. 17: SECTION 271100 – COMMUNICATIONS EQUIPMENT ROOM FITTINGS, PART 2 – PRODUCTS, Article 2.1 – EQUIPMENT FRAMES, Paragraph A. **Replace** this entire paragraph with the following:
- “A. Basis-of-Design Product: Subject to compliance with requirements, provide the following product, or an acceptable equal:
1. Middle Atlantic, Model SRSR”.

## **DRAWINGS:**

- Item No. 18: A001 – COVER, SHEET INDEX, CODE SUMMARY & VICINITY MAP.
- Change** A603 Title to read: SECOND FLOOR REFLECTED CEILING PLAN  
**Change** S001 Title to read: GENERAL NOTES AND ABBREVIATIONS
- Item No. 19: A003 – FINISHES & OPENING SCHEDULES
- Opening schedule:
- Opening 423. **Change** size to read 4'-0" x 7'-0"

Doors 206 & 316. **Add** remark "Reinstall Mag Holder Hardware"

General Notes. **Add** 208 to list of openings where signage is to be provided.

Finish Schedule:

Ceiling all locations. At "GWB" **change** to read "GWB/PT".

Ceiling at Girls 308. **Change** ceiling to read "GWB/PT".

206A Storage. **Add** "PT" all walls.

423 Storage. **Add** "PT" to North wall.

316 Library, East Wall. **Change** to read "PT". **Add** in "NOTES" column "\*PATCH @ NEW WORK".

**Add** Rooms "318 CORRIDOR" and "320 CORRIDOR". All surfaces Patch @ New Work.

Item No. 20: A102a – MAIN FLOOR DEMOLITION PLAN. **Add** Note 16 to Office 232.

Item No. 21: A102b – MAIN FLOOR DEMOLITION PLAN. **Delete** "Note 6" from West wall of Mult-Purpose 424.

Demolition Notes: **Add** the following to Note 6.

"Remove hardboard mastic from PWD surface. Prepare surface for finish as scheduled."

Item No. 22: A103 – SECOND FLOOR DEMOLITION PLAN. **Replace** Demolition Notes on A103 with Demolition Notes on A102a.

Item No. 23: A202a – MAIN FLOOR PLAN, Key notes. **Change** Keynote 1 to read "Patch VCT or rubber floor finish to match ex."

KEY NOTES: **Remove** Keynote 3 at Jan 233.

Item No. 24: A202b – MAIN FLOOR PLAN, Key notes. **Change** Keynote 1 to read "Patch VCT or rubber floor finish to match ex."

1/A202b - KEY NOTES: **Remove** Keynote 3 at Jan 233.

Item No. 25: A401 – ENLARGED DEMOLITION PLANS.

1/A401: **Change** line of South wall of Nurse 262 & Exam 268 to dashed denoting the removal of GWB.

1/A401: **Remove** Note 16 from Nurse 262.

1/A401: **Remove** Note 16 from Exam 268.

2/A401: **Remove** Note 8 at Southwest door of Library 316.

Item No. 26: A402 – ENLARGED FLOOR PLANS.

2/A 402: **Add** “Note 7” on corridor side of Boys 314 where existing construction meets new construction.

2/A 402: **Remove** dimension of alcove at door 316. **Add** note “See 1/A903 for required dimension”.

Item No. 27: A403 – ENLARGED FLOOR PLANS.

1/A403: Classroom 215. **Change** East interior elevation call out to read 1/A502.

Item No. 28: A503 – INTERIOR ELEVATIONS.

4/A503: **Relocate** PTDs to elevation 3/A503 as shown on Floor Plans.

5/A503: **Add** vertical floor-to-ceiling brace at urinal screen.

8/A503: **Relocate** PTDs to elevation 7/A503 as shown on Floor Plans.

Item No. 29: A504 – INTERIOR ELEVATIONS.

1/A504: **Change** detail call out 5/A902 (TYP @ Flush Doorway) to read 6/A901 (TYP).

1/A504: **Add** SS corner guards full height of door openings and at heads.

Item No. 30: A505 – INTERIOR ELEVATIONS.

1/A505: **Add** corner guards full height of door openings and at heads.

Item No. 31: A602a – MAIN FLOOR REFLECTED CEILING PLAN.

**Add** ceiling height +/-8'-0" to Jan 208.

**Change** ceiling height of Storage 206A from 9'-0" to 8'-6".

Item No. 32: A603 – MAIN FLOOR REFLECTED CEILING PLAN.

**Change** drawing and sheet title to read: SECOND FLOOR REFLECTED CEILING PLAN.

**Add** ceiling height +/-8'-0" to Jan 310.

Item No. 33: A901 – INTERIOR DETAILS.

1/A901: **Replace** “wall panel” with “enameled hardwood” at every instance.

2/A901: **Change** title to read “INTERIOR HEAD/JAMB @ ALCOVE”.

**Add** Note: “Continue textile wall covering to ceiling of alcove where enameled hardboard is removed”.

**Change** Note "Corner Guard" to read "Corner Guard at head & jamb".

3/A901: **Change** Note "1/2"x3" WD TRIM" to read "1"x3" WD TRIM WITH A 3/4" RABBET TO RECEIVE WALL FINISH".

6/A901: **Change** title to read "INTERIOR HEAD/JAMB @ FLUSH CONDITION".

**Change** Note "Angle from cut corner guard" to read "Angle from cut corner guard at head & jamb".

Item No. 34: H100 – GENERAL NOTES SHEET NOTES – LEGEND HAZARDOUS MATERIALS, HAZARDOUS MATERIALS – SHEET NOTES.

**Change** note 7 to read: "REMOVE AND DISPOSE OF CONVECTORS ATTACHED TO GYPSUM WALLBOARD WALLS CONTAMINATED WITH ACM JOINT COMPOUND."

**Change** note 17 to read: "Cut and patch floor containing residual ACM floor tile mastic as necessary to accommodate mechanical SOG removal for waste connection."

**Add** Note 18 to read: "Residual ACM floor tile mastic may exist beneath carpet in this area. Remove ACM floor tile mastic to accommodate expansion of restrooms. See architectural demo plans."

ASBESTOS CONTAINING MATERIALS (ACM).

**Change** note 2 to read: "Original VAT flooring with black mastic and residual black floor mastics from previous ACM flooring removed. Residual black flooring mastics may exist beneath newer flooring in various quantities but observed mostly as heavy staining. All original VAT floor tile and floor tile mastic throughout the school contains asbestos. Newer VCT and resilient flooring does not contain asbestos."

LEAD CONTAINING MATERIALS (LCM).

**Remove** Note 3.

**Change** Note 4 to number 3.

**Change** Note 5 to number 4.

**Change** Note 6 to number 5.

Item No. 35: H101 – MAIN FLOOR 1 – ELEVATOR MECH. RM – HAZARDOUS MATERIALS PLAN, BASEMENT MECHANICAL DEMOLITION – HAZARDOUS MATERIALS PLAN.

**Remove** note bubble #7.

Item No. 36: H102 – MAIN FLOOR 1A HAZARDOUS MATERIALS PLAN

**Remove** note bubble #16 from wall to be removed at Classroom 229.

**Remove** note bubble #16 from notes outside Room 264 in Corridor.

**Add** note bubble #16 to Toilet 263.

**Add** note bubble #16 to Girls RR 271.

**Add** note bubble #16 to Boys RR 270.

Item No. 37: H103 – SECOND FLOOR HAZARDOUS MATERIALS PLAN.

**Replace** note bubble #16 with note bubble #18 at Library 330.

Item No. 38: S201 – PARTIAL FOUNDATION PLANS.

**Replace** 1/S201 with SK#1-S attached to this Addendum.

**Change** 2/S201 on the lower left corner to read 3/S201.

**Delete** concrete infill on 2/S201 & 3/S201.

**Replace** 4/S201 with SK#2-S attached to this Addendum.

Item No. 39: S501 – DETAILS.

**Replace** 3/S501 with SK#3-S attached to this Addendum.

**Delete** 4/S501 in its entirety.

**Replace** 7/S501 with SK#4-S attached to this Addendum.

Item No. 40: M002 – OVERALL FLOOR PLANS.

DEMOLITION NOTES: **Add** Note 6 as follows:

“6. Partial ceiling demolition as required to facilitate architectural, mechanical and electrical work.”

Detail 1: In WORK 256 **change** detail callout 2/M101 to 1/M101.

Detail 1: **Expand** Demolition Note 1 to cover Jan 208, Nurse 262, Waiting 264, Cot 265, Cot 266, Exam 268, Boys 270, and Girls 271.

Detail 1: In Corridor 237 **replace** Demolition Note 1 with Note 6.

Detail 1: **Add** Note 6 at Jan 224.

Detail 2: **Expand** Demolition Notes 1 & 3 extent to cover Jan 337, all of Girls 335, all of Boys 334, and approximately 6 feet of the entire width of Library 330.

Detail 2: In CORR 318 **change** detail callout 1/M103 to 2/M103.

Detail 1: **Add** Note 6 at Library 330.

Item No. 41: M101 – MAIN FLOOR PLAN – DEMO PIPING.

**Replace** Note “X FUME HOOD PIPING????” that is shown in Corridor 237 and pointing at the fume hood in Classroom 231 with “Remove all piping and ductwork from fume hood”.

Details 1A & 1B: **Add** Demolition Note 6 to each plan.

Detail 3 in Toilet 263 delete saw cutting area shown: **Add** Note "Plug permanently floor drain piping below grade, patch floor smooth. "

Item No. 43: M200 – BASEMENT FLOOR PLAN.

Detail 1: **Add** Construction Note 3 to the 2" waste penetration of Mech 110 concrete wall.

Detail 1: **Add** Construction Note 3 to the 1-inch sprinkler penetration of Storage 113 and Elevator 109 concrete walls.

Item No. 44: M203 – JAN. 106, MAIN & SECOND FLOOR PLAN – PIPING.

Detail 3: In Toilet 286B **remove** Construction Note 2.

Item No. 45: M205 – MAIN FLOOR PLAN – GYM.

Construction Note 1: In first sentence **change** "WALL" to "FLOOR".

By: 

Jennifer Mannix,  
Contract Administrator

Date: 3-23-12

Total number of pages contained within this Addendum: 17

## **SECTION 101423 - PANEL SIGNAGE**

### **PART 1 - GENERAL**

#### **1.1 RELATED DOCUMENTS**

- A. Drawings and general provisions of the Contract, including General and Supplementary Conditions and Division 01 Specification Sections, apply to this Section.

#### **1.2 SUMMARY**

- A. Section Includes:
  - 1. Room-identification signs.

#### **1.3 DEFINITIONS**

- A. Accessible: In accordance with the accessibility standard.

#### **1.4 ACTION SUBMITTALS**

- A. Product Data: For each type of product.
- B. Shop Drawings: For panel signs.
  - 1. Show message list, typestyles, graphic elements, including raised characters and Braille, and layout for each sign at least half size.
- C. Samples for Initial Selection: For each type of sign assembly, exposed component, and exposed finish.
- D. Sign Schedule: Use same designations specified or indicated on Drawings or in a sign schedule.

#### **1.5 FIELD CONDITIONS**

- A. Field Measurements: Verify locations of anchorage devices embedded in permanent construction by other installers by field measurements before fabrication, and indicate measurements on Shop Drawings.

#### **1.6 WARRANTY**

- A. Special Warranty: Manufacturer agrees to repair or replace components of signs that fail in materials or workmanship within specified warranty period.
  - 1. Failures include, but are not limited to, the following:
    - a. Deterioration of embedded graphic image.
    - b. Separation or delamination of sheet materials and components.

## **SECTION 101423 - PANEL SIGNAGE**

2. Warranty Period: Five years from date of Substantial Completion.

### **PART 2 - PRODUCTS**

#### **2.1 PERFORMANCE REQUIREMENTS**

- A. Accessibility Standard: Comply with applicable provisions in the U.S. Architectural & Transportation Barriers Compliance Board's ADA-ABA Accessibility Guidelines for Buildings and Facilities and ICC A117.1 for signs.

#### **2.2 SIGNS**

- A. Manufacturers: Subject to compliance with requirements, available manufacturers offering products that may be incorporated into the Work include, but are not limited to, the following:
  1. Allen Markings International.
  2. APCO Graphics, Inc.
  3. ASE, Inc.
  4. ASI Sign Systems, Inc.
  5. Best Sign Systems Inc.
  6. Clarke Systems.
  7. Fossil Industries, Inc.
  8. InPro Corporation.
  9. Mohawk Sign Systems.
  10. Seton Identification Products.
  11. Vista System.
- B. Room-Identification Sign: Sign with smooth, uniform surfaces; with message and characters having uniform faces, sharp corners, and precisely formed lines and profiles; and as follows:
  1. Acrylic Sheet Sign:
    - a. Composite-Sheet Thickness: Manufacturer's standard for size of sign min 0.125 inch.
    - b. Surface-Applied Graphics: Raised lettering and graphics as indicated, 3/32".
    - c. Color(s): As selected by Architect from manufacturer's full range.
  2. Sign-Panel Perimeter: Finish edges smooth.
    - a. Edge Condition: Square cut.
    - b. Corner Condition in Elevation: Square.
  3. Frame: Aluminum.
  4. Mounting: Manufacturer's standard method for substrates indicated with.
  5. Text and Typeface: Accessible raised characters and Braille. Finish raised characters to contrast with background color, and finish Braille to match background color.

## **SECTION 101423 - PANEL SIGNAGE**

### **2.3 ACCESSORIES**

- A. Fasteners and Anchors: Manufacturer's standard as required for secure anchorage of signage, noncorrosive and compatible with each material joined, and complying with the following:
  - 1. Use concealed fasteners and anchors unless indicated to be exposed.
- B. Two-Face Tape: Manufacturer's standard high-bond, foam-core tape, 0.045 inch thick, with adhesive on both sides.

### **2.4 FABRICATION**

- A. General: Provide manufacturer's standard sign assemblies according to requirements indicated.
  - 1. Preassemble signs and assemblies in the shop to greatest extent possible. Disassemble signs and assemblies only as necessary for shipping and handling limitations. Clearly mark units for reassembly and installation; apply markings in locations concealed from view after final assembly.
  - 2. Mill joints to a tight, hairline fit. Form assemblies and joints exposed to weather to resist water penetration and retention.
  - 3. Provide rebates, lugs, and brackets necessary to assemble components and to attach to existing work. Drill and tap for required fasteners. Use concealed fasteners where possible; use exposed fasteners that match sign finish.

## **PART 3 - EXECUTION**

### **3.1 EXAMINATION**

- A. Examine substrates, areas, and conditions, with Installer present, for compliance with requirements for installation tolerances and other conditions affecting performance of signage work.
- B. Verify that sign-support surfaces are within tolerances to accommodate signs without gaps or irregularities between backs of signs and support surfaces unless otherwise indicated.
- C. Verify that anchor inserts are correctly sized and located to accommodate signs.
- D. Proceed with installation only after unsatisfactory conditions have been corrected.

### **3.2 INSTALLATION**

- A. General: Install signs using mounting methods indicated and according to manufacturer's written instructions.
  - 1. Install signs level, plumb, true to line, and at locations and heights indicated, with sign surfaces free of distortion and other defects in appearance.
  - 2. Install signs so they do not protrude or obstruct according to the accessibility standard.

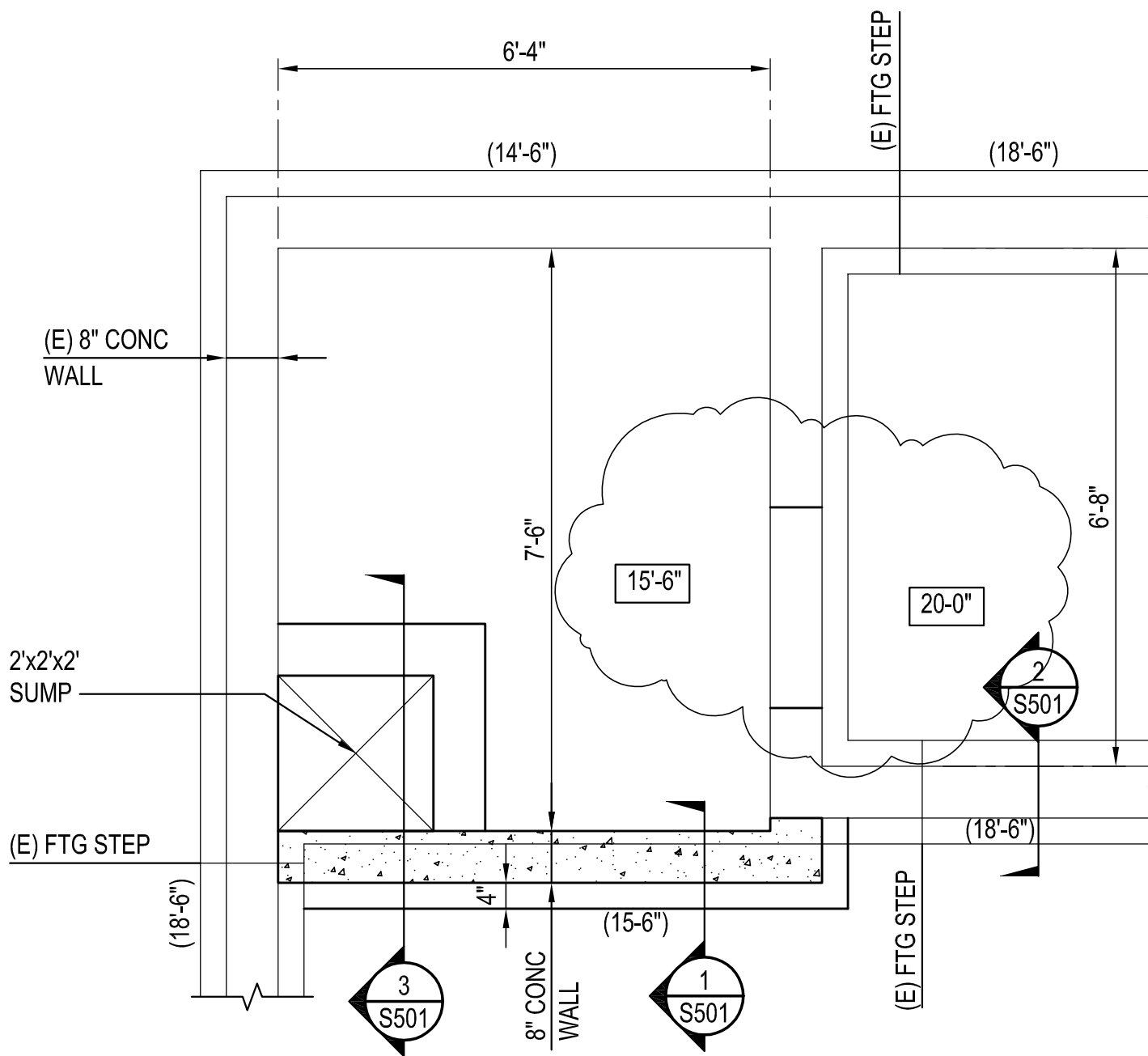
## **SECTION 101423 - PANEL SIGNAGE**

3. Before installation, verify that sign surfaces are clean and free of materials or debris that would impair installation.
  4. Corrosion Protection: Coat concealed surfaces of exterior aluminum in contact with grout, concrete, masonry, wood, or dissimilar metals, with a heavy coat of bituminous paint.
- B. Room-Identification Signs and Other Accessible Signage: Install in locations on walls as indicated.

### **3.3 ADJUSTING AND CLEANING**

- A. Remove and replace damaged or deformed signs and signs that do not comply with specified requirements. Replace signs with damaged or deteriorated finishes or components that cannot be successfully repaired by finish touchup or similar minor repair procedures.
- B. Remove temporary protective coverings and strippable films as signs are installed.
- C. On completion of installation, clean exposed surfaces of signs according to manufacturer's written instructions, and touch up minor nicks and abrasions in finish. Maintain signs in a clean condition during construction and protect from damage until acceptance by Owner.

**END OF SECTION 101423**



**NOTE:**

1. TOP OF FOOTING ELEVATION IS NOTED THUS: (X'-Y")
2. TOP OF SLAB ELEVATION IS NOTED THUS: [X'-Y"]

**1 PARTIAL FOUNDATION PLAN**  
SCALE: 1/2" = 1'-0"

**Jensen  
Yorba  
Lott**  
Inc.  
522 West 10th Street  
Juneau, Alaska 99801  
phone 907-586-1070  
fax 907-586-3959  
jensenyorbalott.com

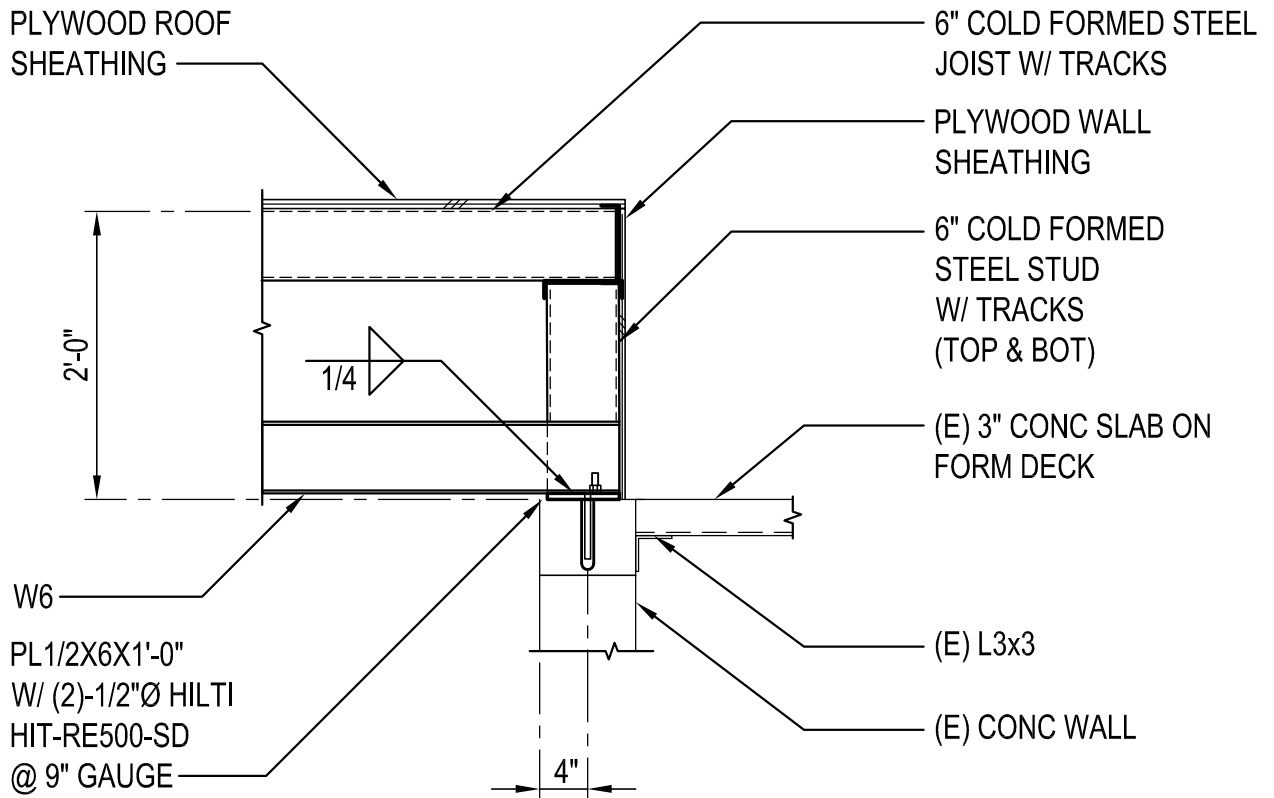
**MARIE DRAKE  
SCHOOL RENOVATION**

ADDENDUM #1  
3-16-2012

**SK #1-S**







**7 ELEVATOR SHAFT LID**

SCALE: 1-1/2" = 1'-0"

REF S501