



ADDENDUM TO THE CONTRACT

for the

Dimond Park Aquatic Center Whirlpool Mechanical and Electrical Systems

Contract No. E12-073

ADDENDUM NO.: ONE

CURRENT DEADLINE FOR BIDS:
March 6, 2012

PREVIOUS ADDENDA: NONE

ISSUED BY: City and Borough of Juneau
ENGINEERING DEPARTMENT
155 South Seward Street
Juneau, Alaska 99801

DATE ADDENDUM ISSUED: February 29, 2012

The following items of the contract are modified as herein indicated. All other items remain the same. This is a faxed addendum. A confirming copy will not be mailed to you. This addendum has been issued and is posted online. Please refer to the CBJ Engineering Contracts Division webpage at: <http://www.juneau.org/engineering ftp/contracts/Contracts.php>

PROJECT MANUAL:

- Item No. 1: SECTION 15762 – TERMINAL HEAT TRANSFER UNITS, PART 2 PRODUCTS, 2.1 CONVECTORS (CV), Paragraph D., **Change to** read:
“Finish: Entire convector, backplate, and supports shall have factory powder coat epoxy finish, color selected by Architect.”
- Item No. 2: SECTION 15762 – TERMINAL HEAT TRANSFER UNITS, PART 3 EXECUTION, 3.2 INSTALLATION, Paragraph I, **Remove** its entirety.
- Item No. 3: SECTION 15810 – DUCTS, PART 2 PRODUCTS, 2.1 MATERIALS, Paragraph B. **Remove** the following from the paragraph, “All ductwork and other metal parts exposed to the pool storage area, whirlpool mechanical room, chemical room, or other corrosive environments shall be coated with corrosion resistant coating.”
- Item No. 4: SECTION 15810 – DUCTS, PART 2 PRODUCTS, 2.2 DUCTWORK FABRICATION, Paragraph H., **Remove** in its entirety.

DRAWINGS:

Item No. 1: M200: ENLARGED WHIRLPOOL AREA PLANS

Construction Note 1. **Remove** the following from the paragraph, "Entire CV cabinet and backplate painted with epoxy paint prior to installation".

Construction Note 6. **Remove** Construction Note 6 in its entirety.

Convactor Schedule: **Remove** the following from the schedule, "Prime Coat for field painting" and replace with "Entire CV cabinet and backplate provided with factory powder coat epoxy finish, color selected by Architect."

Item No. 2: E201 – ENLARGED FLOOR PLANS DETAIL

Replace entire E201 Drawing with attached E201.

Item No. 3 E301 – SCHEDULES

Replace entire E301 Drawing with attached E301.

Item No. 4 PL403 – WHIRLPOOL MECHANICAL RM & EQUIPMENT LIST

Whirlpool Filtration Equipment: **Change** F31 Cat. No. XMCG to 2XMCG

Whirlpool Filtration Equipment: **Add** to F40 description "Contractor field verify dimensions. (See A201 for extent of cover)"

By: _____

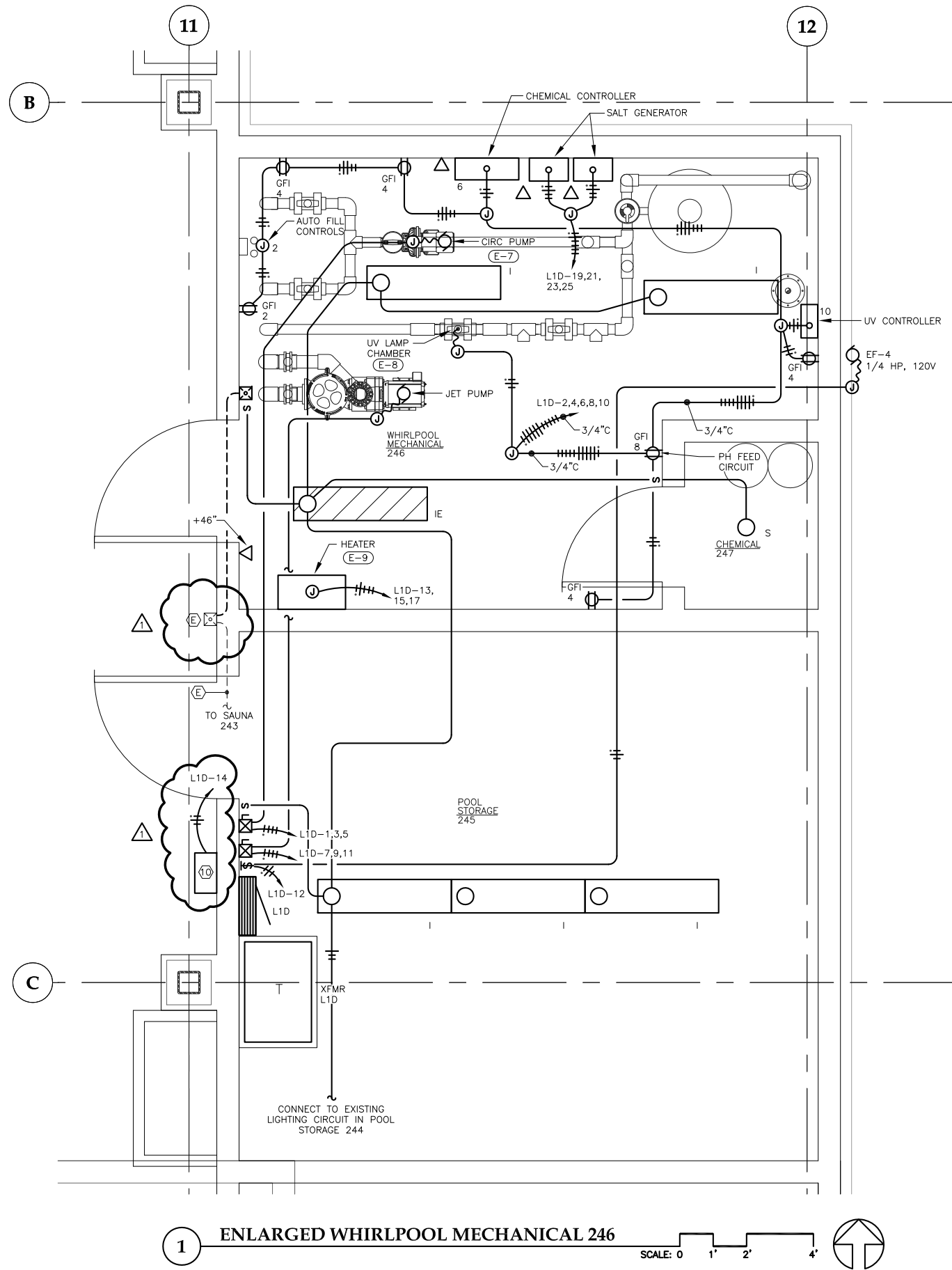


Jennifer Mannix,
Contract Administrator

Date: February 29, 2012

Total number of pages contained within this Addendum: 4

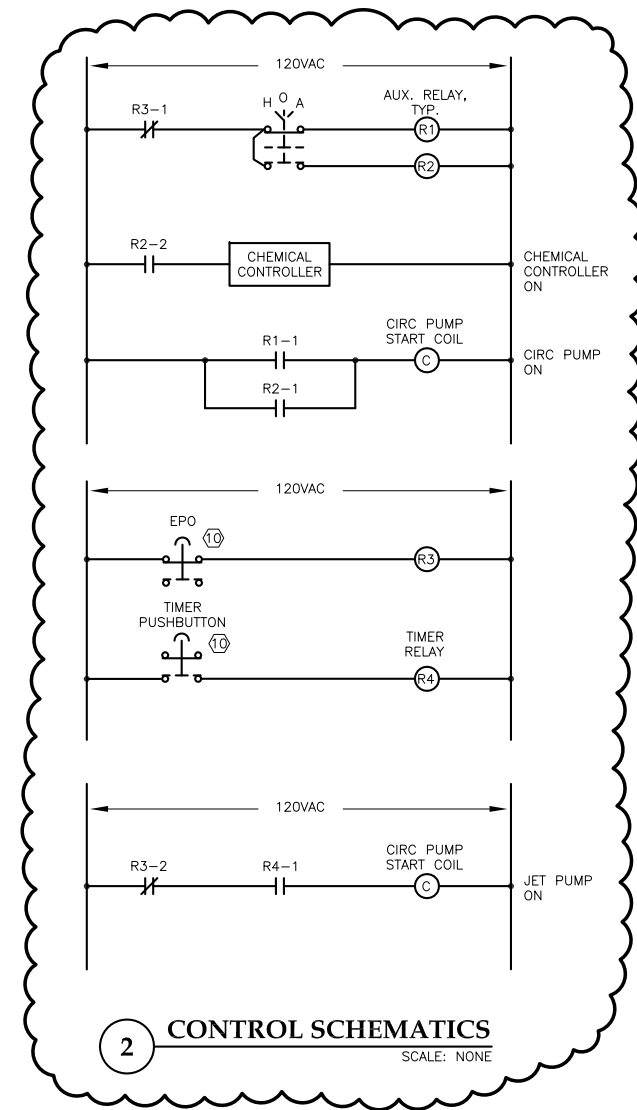
Feb. 29, 2012 - 10:32am
F:\Projects\100 Jensen Yorba Lott Inc\224 Dimond Park Pool\Drawings\Drawings Whirlpool Set\E201.dwg (Layout1 tab)



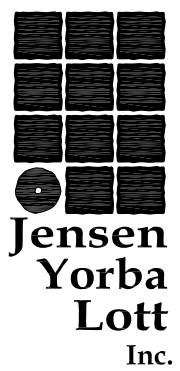
1 ENLARGED WHIRLPOOL MECHANICAL 246
SCALE: 0 1' 2' 4'

NOTES:

1. BUCK-BOOST TRANSFORMER FOR SALT GENERATOR PROVIDED BY POOL CONTRACTOR. UNIT RATED 240V.
2. INTERLOCK CHEMICAL CONTROLLER WITH CIRCULATION PUMP, SIMILAR TO DETAIL 2.
3. CONNECT WHIRLPOOL HEATER CONTROLS TO THE HEATER FLOW SWITCH. HEATER SHALL DE-ENERGIZE WITH LOW FLOW.
4. PROVIDE ADJUSTABLE DIGITAL TIMER, RANGE 10-60 MINUTES. TIMER PUSHBUTTON SHALL RESET TIMER TO BEGINNING OF CYCLE.
5. ROUTE DATA CABLES TO EXISTING PATCH PANEL IN EXISTING DATA RACK. SEE DETAIL 2, E100.
6. TYPE I LUMINAIRE: 4' CEILING OR CHAIN HUNG LINEAR FLUORESCENT PARABOLIC INDUSTRIAL, WITH ELECTRONIC BALLAST, FULL END CAPS, WIREGUARD, (2) 28W T8 (3500K, CRI 82) LAMPS. LITHONIA LIGHTING # PV 228 277 GEB10IS PCEP WGAFPV.
7. TYPE IE LUMINAIRE: SAME AS TYPE I, WITH EMERGENCY BATTERY PACK. LITHONIA LIGHTING # PV 228 277 GEB10IS EL PCEP WGAFPV.
8. TYPE S LUMINAIRE: CEILING MOUNT COMPACT FLUORESCENT, GASKETED, PRISMATIC POLYCARBONATE LENS, ELECTRONIC BALLAST, (1) 13W QUAD (3500K, CRI 82) LAMP. FAIL-SAFE # FB-P-13Q-277-EBT1.
10. MOUNT EPO AND TIMER PUSHBUTTON IN NEMA 4X 316 STAINLESS STEEL ENCLOSURE. PROVIDE INDUSTRIAL, CORROSION RESISTANT, NON-METALLIC OPERATORS. INSTALL NUISANCE TRIP COVER OVER EPO. SUBMIT TO ENGINEER FOR APPROVAL.



2 CONTROL SCHEMATICS
SCALE: NONE



Jensen Yorba Lott Inc.
522 West 10th Street
Juneau, Alaska 99801
phone 907-586-1070
fax 907-586-3959
jensenyorbajlott.com



ELECTRONIC
19th
SIGNATURE
Feb 29, 2012

City and Borough of Juneau
DIMOND PARK AQUATIC CENTER
WHIRLPOOL MECHANICAL
AND ELECTRICAL SYSTEMS
CBJ Contract Number E12-073

REVISIONS

△	ADDENDUM 1	2/29/12
△		
△		
△		

SHEET TITLE
ENLARGED FLOOR PLANS DETAIL

DATE: DECEMBER 2011
FILE: 0725

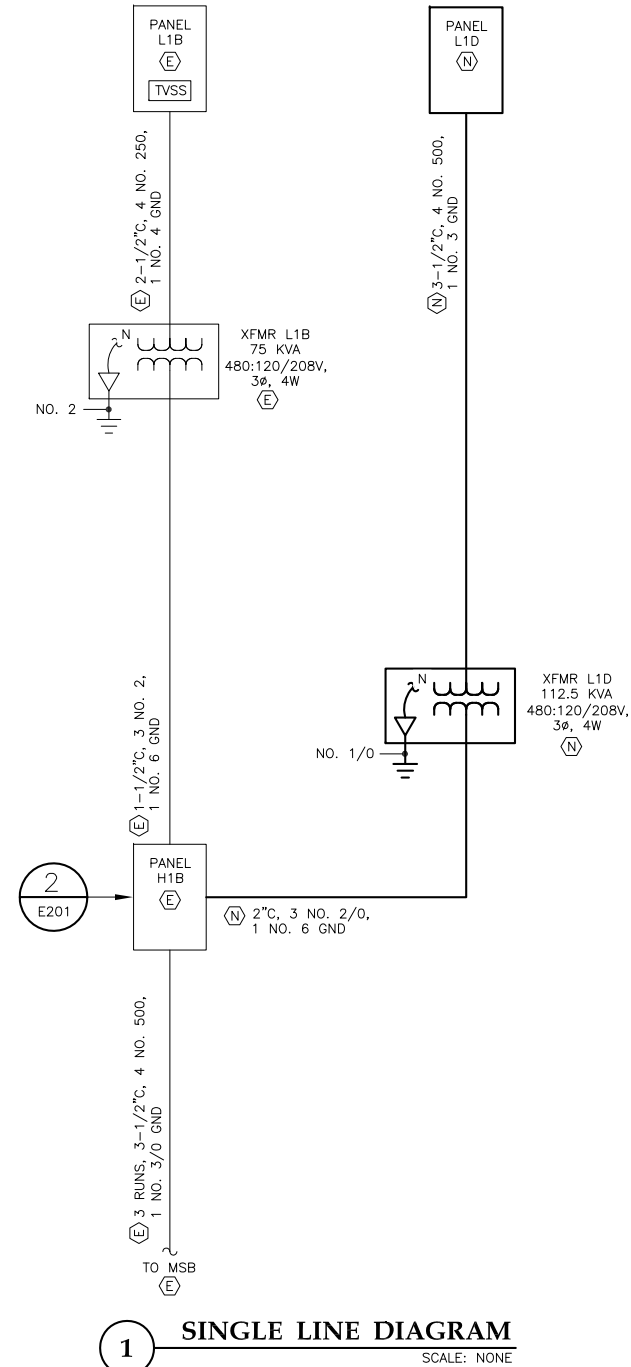
E201

SIEMENS TYPE P4

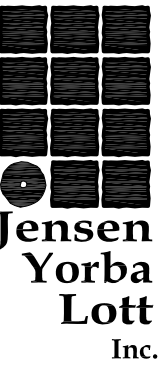
PANEL H1B (EXISTING)		SIZE	VOLTS/PHASE			MAIN		LOCATION	MOUNT
		1200 AMPS	480Y/277V, 3 PH			MLO		MECHANICAL 304	SURFACE
C K T NO	DESCRIPTION	BREAKER AMP/ POLE	KVA			BREAKER AMP/ POLE	DESCRIPTION	C K T NO	
			CKT	AØ	BØ				CØ
1	AHP-1	15/31	1.3	61.3		60.0	300/3	EHW-1	2
3	----	---	1.3		61.3	60.0	---	----	4
5	----	---	1.3		61.3	60.0	---	----	6
7	AHU-2 SF	20/3	3.0	63.0		60.0	300/3	EHW-2	8
9	----	---	3.0		63.0	60.0	---	----	10
11	----	---	3.0		63.0	60.0	---	----	12
13	AHU-2 RF	15/3	2.1	20.1		18.0	100/3	AHU-1 SF	14
15	----	---	2.1		20.1	18.0	---	----	16
17	----	---	2.1		20.1	18.0	---	----	18
19	SPACE	---	0.0	14.4		14.4	90/3	AHU-1 RF	20
21	SPACE	---	0.0		14.4	14.4	---	----	22
23	SPACE	---	0.0		14.4	14.4	---	----	24
25	SPACE	---	0.0	19.0		19.0	150/3	SUBFEED H1B SECTION 2	26
27	SPACE	---	0.0		17.1	17.1	---	----	28
29	SPACE	---	0.0		15.3	15.3	---	----	30
31	SPACE	---	0.0	26.8		26.8	110/3	XFMR L1B	32
33	SPACE	---	0.0		25.8	25.8	---	----	34
35	SPACE	---	0.0		28.1	28.1	---	----	36
37	SPACE	---	0.0	26.2		26.2	175/3	SUBFEED XFMR L1D	38
39	SPACE	---	0.0		25.1	25.1	---	----	40
41	SPACE	---	0.0		22.6	22.6	---	----	42
BALANCED CONNECTED LOAD: 682.4 KVA / 822.2 AMPS			230.8	226.8	224.8				
MAXIMUM CONNECTED LOAD: 682.4 KVA / 854.8 AMPS									

PANEL L1D		SIZE	VOLTS/PHASE			MAIN		LOCATION	MOUNT
		400 AMPS	208Y/120V, 3 PH			400/3		STORAGE 245	SURFACE
C K T NO	DESCRIPTION	BREAKER AMP/ POLE	KVA			BREAKER AMP/ POLE	DESCRIPTION	C K T NO	
			CKT	AØ	BØ				CØ
1	CIRC PUMP	35/3	2.1	4.0		1.9	20/1	AUTO FILL CONTROLS	2
3	----	---	2.1		2.8	0.7	20/1	MECHANICAL 246	4
5	----	---	2.1		2.7	0.6	20/1	CHEMICAL CONTROLLER	6
7	JET PUMP	15/3	0.9	1.5		0.6	20/1	PH FEED CIRCUIT	8
9	----	---	0.9		2.1	1.2	20/1	UV CONTROLLER	10
11	----	---	0.9		1.6	0.7	15/1	EXHAUST FAN EF-4	12
13	HEATER	200/3	19.0	19.1		0.1	20/1	CONTROLS	14
15	----	---	19.0		19.0	0.0	20/1	SPARE	16
17	----	---	19.0		19.0	0.0	20/1	SPARE	18
19	SALT GENERATOR POWER SUPPLY	20/2	1.7	1.7		0.0	20/1	SPARE	20
21	----	---	1.7		1.7	0.0	20/1	SPARE	22
23	SALT GENERATOR POWER SUPPLY	20/2	1.7		1.7	0.0	20/1	SPARE	24
25	----	---	1.7		1.7	0.0	20/1	SPARE	26
27	SPACE	---	0.0		0.0	0.0	---	SPACE	28
29	SPACE	---	0.0		0.0	0.0	---	SPACE	30
31	SPACE	---	0.0	0.0		0.0	---	SPACE	32
33	SPACE	---	0.0		0.0	0.0	---	SPACE	34
35	SPACE	---	0.0		0.0	0.0	---	SPACE	36
37	SPACE	---	0.0	0.0		0.0	---	SPACE	38
39	SPACE	---	0.0		0.0	0.0	---	SPACE	40
41	SPACE	---	0.0		0.0	0.0	---	SPACE	42
BALANCED CONNECTED LOAD: 78.6 KVA / 218.3 AMPS			28.0	25.6	25.0				
MAXIMUM CONNECTED LOAD: 78.6 KVA / 233.3 AMPS									

POOL EQUIPMENT SCHEDULE													
DESIGNATION			LOAD			CIRCUITING			CONTROL				
ITEM	DESCRIPTION	LOCATION	HP	KW	AMPS	VOLTS	PHASE	CONDUCTORS	DISCONNECT SWITCH	FUSE	STARTER SIZE	CONTROL	REMARKS
E-7	WHIRLPOOL CIRCULATION PUMP	WHIRLPOOL MECH. 246	5			208	3	3/4°C, 3 NO. 8, 1 NO. 10 GND	60/3		1	H-0-A	
E-8	WHIRLPOOL JET PUMP	WHIRLPOOL MECH. 246	2			208	3	1/2°C, 3 NO. 12, 1 NO. 12 GND	30/3		0		
E-9	WHIRLPOOL HEATER	WHIRLPOOL MECH. 246		57		208	3	2°C, 3 NO. 3/0, 1 NO. 6 GND					



Feb 29, 2012 - 10:44am F:\Projects\100 Jensen Yorba Lott Inc\224 Dimond Park Pool\Drawings\Drawings Whirlpool Set\E301.dwg (Layout1 tab)



522 West 10th Street
Juneau, Alaska 99801
phone 907-586-1070
fax 907-586-3959
jensenyorbalo.com



ELECTRONIC
SIGNATURE
Feb 29, 2012

City and Borough of Juneau
DIMOND PARK AQUATIC CENTER
WHIRLPOOL MECHANICAL
AND ELECTRICAL SYSTEMS
CBJ Contract Number E12-073

REVISIONS
ADDENDUM 1
2/29/12

SHEET TITLE
SCHEDULES
DATE: DECEMBER 2011
FILE: 0725

E301