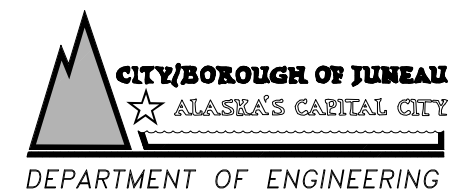


| SHEET No. | DESCRIPTION |
|-----------|--|
| C100 | COVER SHEET |
| C101 | GENERAL NOTES , ABBREVIATIONS AND SYMBOLS |
| C102 | SURVEY CONTROL DIAGRAM |
| C103 | TRUCK HAUL ROUTE, PROJECT COORDINATION NOTES & CONTRACTOR STAGING AREA |
| C200 | EXISTING TOPOGRAPHIC CONDITIONS |
| C300 | DEMOLITION PLAN |
| C400 | SITE PLAN |
| C401 | SITE DRAINAGE PLAN |
| C402 | FIELD CROSS SECTIONS |
| C500 | TURF FIELD DETAILS |
| C501 | TURF FIELD DETAILS |
| C600 | DISCUS AND SHOT PUT PAD DETAILS |
| C601 | TURF FIELD MARKING PLANS AND NOTES |
| C602 | TURF FIELD MARKING DETAILS |
| C603 | FOOTBALL GOAL POST DETAILS |
| C604 | LONG JUMP PIT DETAILS |
| C700 | EROSION AND SEDIMENT CONTROL PLAN |
| E100 | HEAT TRACE SYSTEM, ADDITIVE ALTERNATE No. 1 |

PROJECT LOCATION MAP



COVER SHEET



R & M ENGINEERING, INC.

ENGINEERS GEOLOGISTS SURVEYORS

6205 GLACIER HIGHWAY
JUNEAU, AK. 99801

Phone 907-780-6060
Fax 907-780-4611
www.rmjunEAU.com

ADAIR-KENNEDY FOOTBALL/SOCCER
FIELD SYNTHETIC TURF REPLACEMENT
CBJ CONTRACT No. E12-189
CITY & BOROUGH OF JUNEAU, ALASKA

DATE: FEB. 21, 2012
R & M No. 111405

SHEET C100

GENERAL CONSTRUCTION NOTES

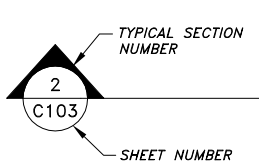
1. CBJ ENGINEERING STANDARD DETAILS BOOK FOR CIVIL ENGINEERING PROJECTS AND SUBDIVISION IMPROVEMENTS DATED AUGUST 14, 2011 AND CBJ ENGINEERING STANDARD SPECIFICATIONS DATED DECEMBER, 2003 ARE MADE A PART OF THIS CONTRACT, WITH CURRENT REVISIONS AS APPLICABLE.
2. GRADES AND ALIGNMENTS SHOWN ON THESE PLANS ARE SUBJECT TO MINOR REVISIONS AS APPROVED BY THE ENGINEER.
3. LOCATION OF STORM DRAIN CATCH BASINS, PIPING AND PIPE LENGTHS ARE SUBJECT TO MINOR REVISIONS AS APPROVED BY THE ENGINEER.
4. LOCATIONS OF EXISTING UNDERGROUND SEWER, WATER, TELEPHONE, CABLE TELEVISION, AND POWER UTILITIES SHOWN ON THESE PLANS WERE DERIVED FROM CBJ AS-BUILTS AND OR FIELD LOCATES. ACTUAL LOCATIONS MAY VARY FROM THOSE SHOWN. THE CONTRACTOR IS RESPONSIBLE FOR LOCATING, PROTECTING, AND MAINTAINING THE UTILITIES THROUGHOUT THE CONSTRUCTION OF THIS PROJECT. ANY DAMAGE RESULTING TO THESE UNDERGROUND UTILITIES DURING CONSTRUCTION SHALL BE PAID FOR BY THE CONTRACTOR AND SHALL BE CONSIDERED INCIDENTAL TO THE CONTRACT. CALL "DIAL BEFORE YOU DIG" @ 586-1333, PRIOR TO ANY EXCAVATION ACTIVITIES.
5. CONTRACTOR SHALL ASSURE CONSTRUCTION ACTIVITIES FOR THIS PROJECT DO NOT INTERFERE WITH THE OPERATIONAL USE OF FLOYD DRYDEN MIDDLE SCHOOL OR ADAIR KENNEDY BASEBALL FIELD.
6. PROPERTY LINE LOCATIONS USED IN THESE PLANS ARE DERIVED FROM RECORD PLATS AND DO NOT REPRESENT A BOUNDARY SURVEY.
7. ALL ITEMS DESIGNATED TO BE REMOVED SHALL BE DISPOSED OF AT AN APPROVED DISPOSAL SITE, EXCEPT AS NOTED IN THE CONTRACT DOCUMENTS.
8. THE CONTRACTOR SHALL NOT STORE MATERIALS, PARK EQUIPMENT OR OPERATE EQUIPMENT WITH ITS TRACKS OR WHEELS PLACED DIRECTLY IN CONTACT WITH THE RUBBERIZED ASPHALT RUNNING TRACK SURFACE AT ANY TIME DURING THIS PROJECT.
9. CONTRACTOR SHALL REFERENCE ALL EXISTING PROPERTY CORNER MONUMENTS PRIOR TO CONSTRUCTION THAT WILL BE DISTURBED DURING HIS WORK, AND REMONUMENT AFTER CONSTRUCTION OPERATIONS. ALL WORK SHALL BE DONE BY, OR UNDER THE DIRECTION OF, AN ALASKA REGISTERED LAND SURVEYOR. ALL EXISTING PROPERTY CORNERS ARE NOT NECESSARILY SHOWN ON THE PLANS.
10. NO TREES OR BUSHES ARE TO BE REMOVED OR DAMAGED UNLESS SHOWN ON THE DRAWINGS OR DIRECTED BY THE ENGINEER TO DO SO. IF DISTRUCTION AND/OR DAMAGE OCCURS THE EFFECTED ITEM WILL BE REPLACED TO EQUAL OR BETTER CONDITION AT NO EXPENSE TO THE OWNER.
11. THE CONTRACTOR SHALL INSTALL AND MAINTAIN EROSION CONTROL DEVICES DURING CONSTRUCTION, AS INDICATED ON THE CONTRACTOR'S APPROVED SWPPP.
13. DATE OF TOPOGRAPHIC SURVEY UPDATE IS DECEMBER 23, 2011.

ABBREVIATIONS

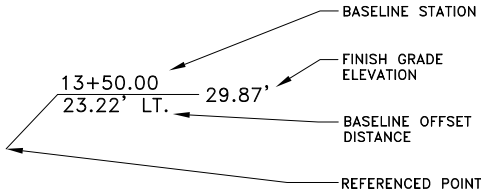
| | |
|------------|--|
| A.C. | ASPHALT CONCRETE PAVEMENT |
| A.C.S. | ALASKA COMMUNICATIONS SYSTEMS |
| A.D.A. | AMERICAN DISABILITY ACT |
| A.E.L.&P. | ALASKA ELECTRIC LIGHT & POWER |
| B.O.C. | BEGINNING OF CURVE |
| B.O.F. | BOTTOM OF FOOTING |
| B.O.P. | BEGINNING OF PROJECT |
| C.B. | CATCH BASIN |
| C.B.J. | CITY & BOROUGH OF JUNEAU |
| C/L | CENTERLINE |
| C.M.P. | CORRUGATED METAL PIPE |
| CONC. | CONCRETE |
| C.P.P. | CORRUGATED POLYETHYLENE PIPE |
| C.T.E. | CONNECT TO EXISTING |
| C.U. | COPPER |
| D.I.P. | DUCTILE IRON PIPE |
| DIA. | DIAMETER |
| DOT/PF | STATE OF ALASKA DEPARTMENT OF EASTING |
| E | |
| E.J.I.W. | EAST JORDAN IRON WORKS |
| EL. | ELEVATION |
| E.O.P. | END OF PROJECT |
| EXP. | EXPANSION |
| EXIST. | EXISTING |
| F.F. | FINISH FLOOR |
| F.G. | FINISH GRADE |
| F.H. | FIRE HYDRANT |
| G.P. | GRADE POINT |
| G.V. | GATE VALVE |
| I.E. | INVERT ELEVATION |
| L | LENGTH |
| LT. | LEFT |
| MAX. | MAXIMUM |
| MIN. | MINIMUM |
| M.J. | MECHANICAL JOINT |
| M.T.E. | MATCH TO EXISTING |
| N | NORTHING |
| N/A | NOT APPLICABLE |
| N.F. | NEENAH FOUNDRY CO. |
| N.F.S. | NON-FROST SUSCEPTIBLE |
| N.T.S. | NOT TO SCALE |
| N.V.C. | NO VERTICAL CURVE |
| O.C. | ON CENTER |
| O.F. | OLYMPIC FOUNDRY CO. |
| P.C. | POINT OF CURVATURE |
| P.C.C. | POINT OF COMPOUND CURVATURE |
| P.I. | POINT OF INTERSECTION |
| P/L | PROPERTY LINE |
| P.O.C. | POINT ON CURVE |
| P.O.L. | POINT ON LINE |
| P.R.C. | POINT OF REVERSE CURVATURE |
| P.T. | POINT OF TANGENCY |
| P.V.C. | POLYVINYL CHLORIDE |
| R | RADIUS |
| R.O.W. | RIGHT-OF-WAY |
| RT. | RIGHT |
| S.D.M.H. | STORM DRAIN MANHOLE |
| S.S. | SANITARY SEWER |
| S.S.C.O. | SANITARY SEWER CLEANOUT |
| S.S.M.H. | SANITARY SEWER MANHOLE |
| STA. | STATION |
| STD. | STANDARD |
| S.W.P.P.P. | STORM WATER POLLUTION PREVENTION PLAN |
| T | TANGENT |
| T.B.M. | TEMPORARY BENCH MARK |
| T.B.O.C. | TOP BACK OF CURB |
| T.O.B. | TOP OF BANK |
| T.O.P. | TOP OF PIPE |
| T.O.W. | TOP OF WALL |
| TYP. | TYPICAL |
| UHMW | ULTRA HIGH MOLECULAR WEIGHT POLYETHYLENE |
| VERT. | VERTICAL |
| V.P.I. | VERTICAL POINT OF INTERSECTION |
| W/ | WITH |

SYMBOLS

| EXISTING | PROPOSED | EXISTING | PROPOSED | |
|----------|----------|----------|----------|----------------------------------|
| | | | | STRUCTURE |
| | | | | 12" ADS ADVANEDGE PIPE |
| | | | | TRENCH DRAIN IN-LINE CATCH BASIN |
| | | | | PROPERTY / BOUNDARY LINE |
| | | | | PROJECT BASELINE |
| | | | | TEMPORARY BENCH MARK |
| | | | | PK NAIL |
| | | | | SANITARY SEWER MANHOLE |
| | | | | SANITARY SEWER LINE |
| | | | | STORM DRAIN CATCH BASIN |
| | | | | STORM DRAIN PIPE |
| | | | | STORM DRAIN MANHOLE |
| | | | | PERIMETER CURB W/ TRENCH DRAIN |
| | | | | PERIMETER CURB |
| | | | | CONCRETE AREA DRAIN |
| | | | | CURB AND GUTTER, TYPE I |
| | | | | ASPHALT SIDEWALK |
| | | | | UNDERGROUND ELECTRIC |
| | | | | WATER LINE |
| | | | | WATER VALVE |
| | | | | FIRE HYDRANT |
| | | | | SITE LIGHT POLE |
| | | | | ELECTRIC LINE UNDERGROUND |
| | | | | ELECTRIC PEDESTAL |
| | | | | ELECTRIC TRANSFORMER |
| | | | | TELEPHONE LINE UNDERGROUND |
| | | | | TELEPHONE PEDESTAL |
| | | | | CABLE TV LINE UNDERGROUND |
| | | | | CABLE TV PEDESTAL |
| | | | | TOP OF BANK / SHOULDER |
| | | | | FILL SLOPE LIMITS |
| | | | | DITCH LINE |
| | | | | DRAINAGE SWALE |
| | | | | TRAFFIC CONTROL SIGN/FIELD SIGN |
| | | | | CHAIN LINK FENCE (4' OR 6') |
| | | | | TREE LINE |
| | | | | DRAINAGE FLOW INDICATOR |
| | | | | CONTOUR LINES |
| | | | | GRADE CONTROL POINT |
| | | | | SWING GATE |
| | | | | DOUBLE SWING GATE |
| | | | | TURN STILE |



REFERENCE
BUBBLE EXPLANATION
N.T.S.



FINISH GRADE EXPLANATION
N.T.S.

I:\2011\111405\Design Drawings\Cover and Notes.dwg PLOT: February 21, 2012 at: 4:46pm

| | |
|----------|---------|
| DESIGN | JMP |
| DRAWN | MLL |
| CHECK | JMP/MAJ |
| APPROVED | JMP |
| FILE: | |

| No. | DATE | REVISION | BY | APRVD. |
|-----|------|----------|----|--------|
| | | | | |

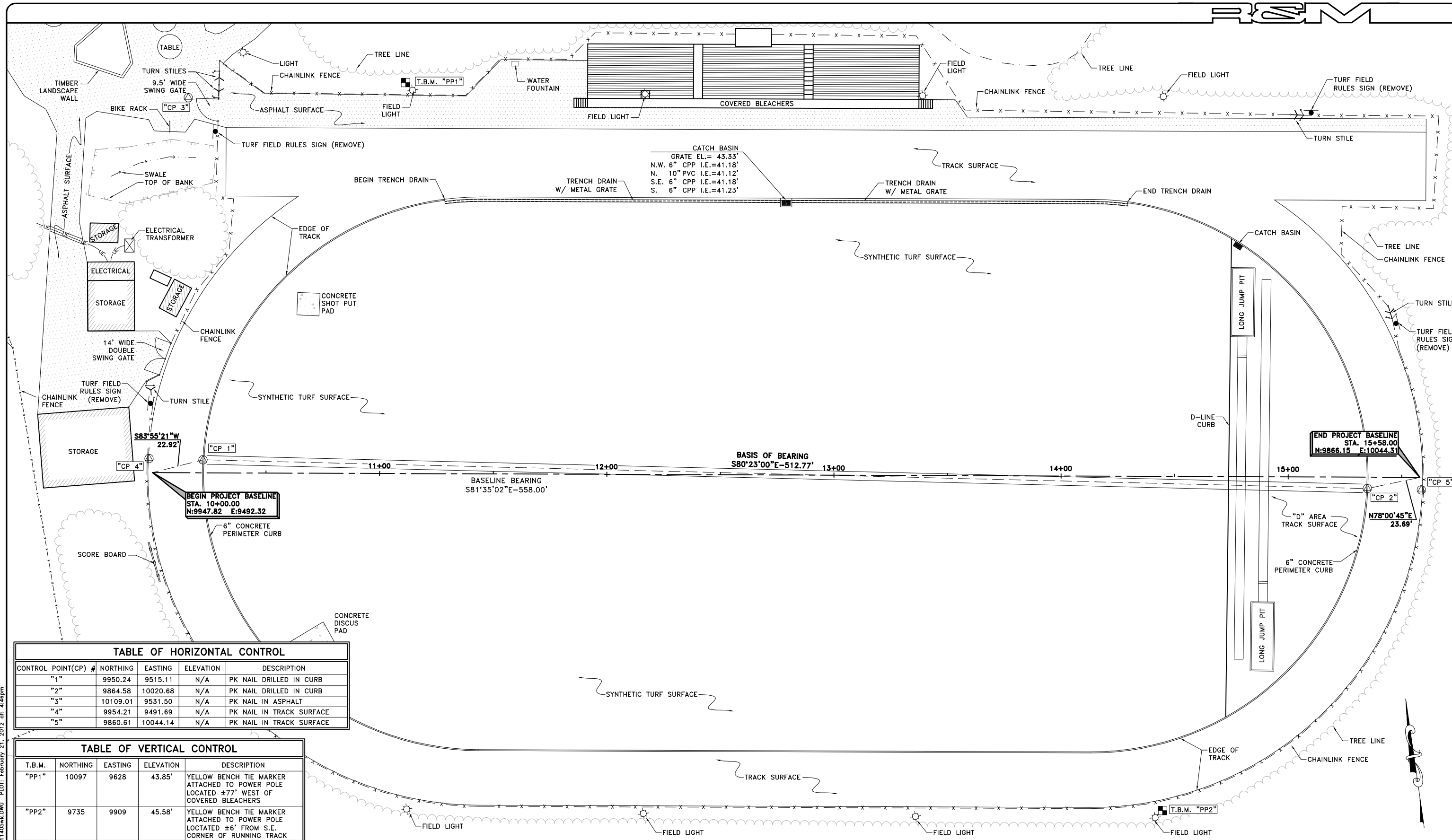
GENERAL NOTES, ABBREVIATIONS
AND SYMBOLS



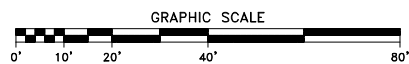
R & M ENGINEERING, INC.
ENGINEERS GEOLOGISTS SURVEYORS
6205 GLACIER HIGHWAY Phone 907-780-6060
JUNEAU, AK. 99801 Fax 907-780-4611
www.rmjuneau.com

ADAIR-KENNEDY FOOTBALL/SOCCER
FIELD SYNTHETIC TURF REPLACEMENT
CBJ CONTRACT No. E12-189
CITY & BOROUGH OF JUNEAU, ALASKA

| |
|---|
| DATE: FEB. 21, 2012 R & M No. 111405 |
| SHEET C101 |



SURVEY CONTROL DIAGRAM



R & M ENGINEERING, INC.
ENGINEERS GEOLOGISTS SURVEYORS
6205 GLACIER HIGHWAY JUNEAU, AK. 99801
Phone 907-780-6060 Fax 907-780-4611
www.rmjuneau.com

ADAIR-KENNEDY FOOTBALL/SOCCER
FIELD SYNTHETIC TURF REPLACEMENT
CBJ CONTRACT No. E12-189
CITY & BOROUGH OF JUNEAU, ALASKA

DATE: FEB. 21, 2012
R & M No. 111405
SHEET C102

I:\2011\111405\Design Drawings\EP111405wk.DWG PLOT: February 21, 2012 at: 4:46pm

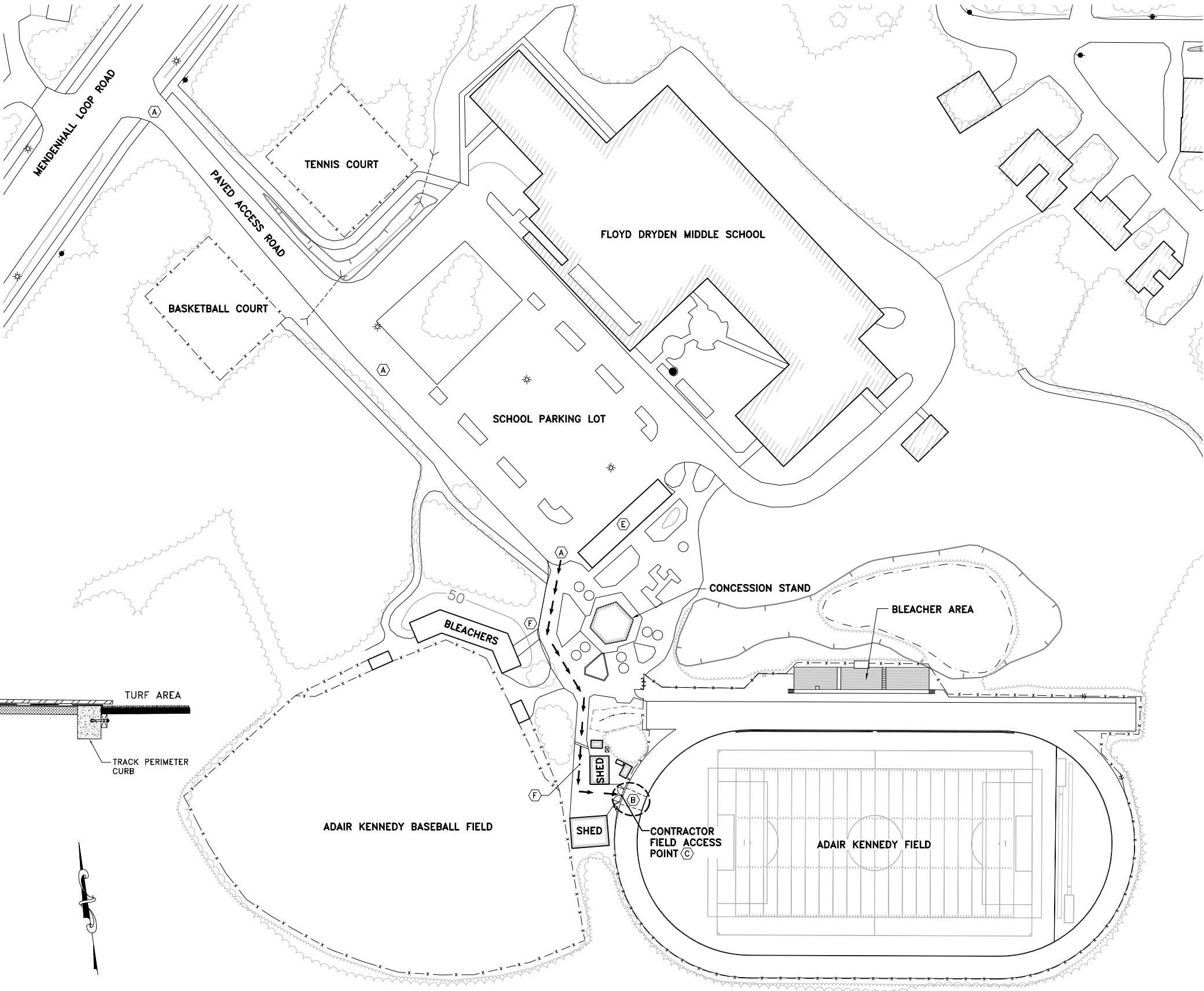
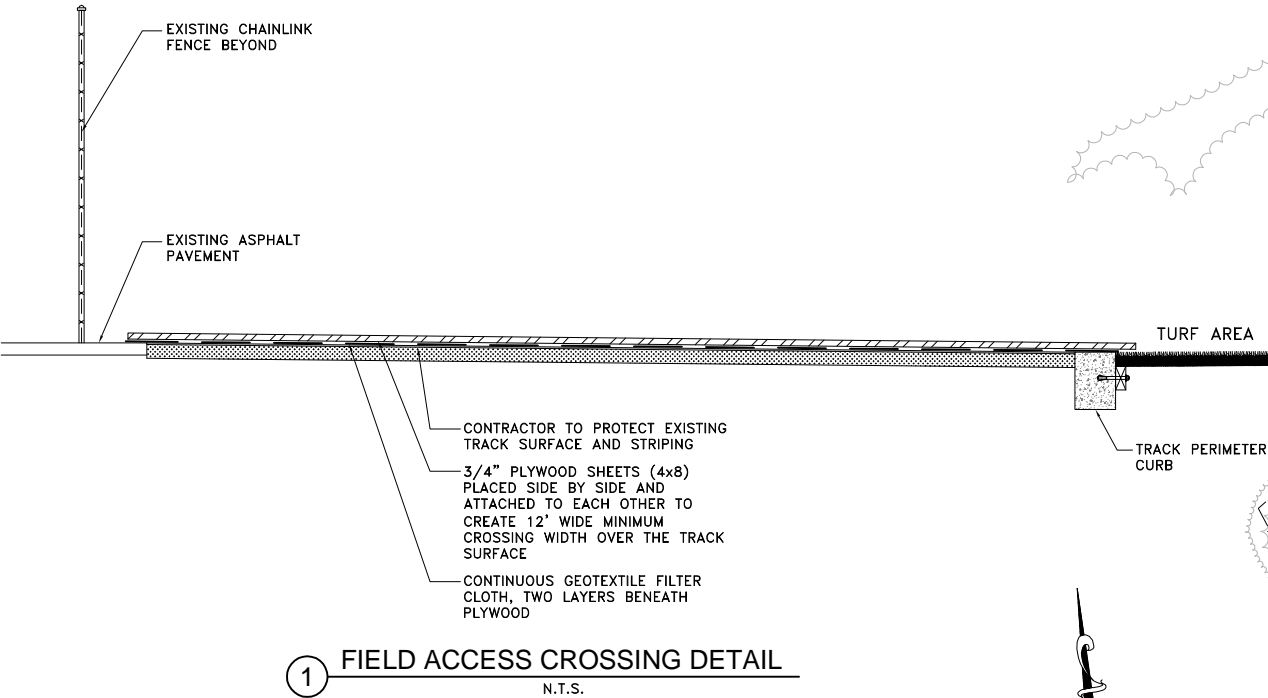
| | | | | | |
|----------|---------|----------|----|--------|--|
| DESIGN | JMP | | | | |
| DRAWN | MLL | | | | |
| CHECK | JMP/MAJ | | | | |
| APPROVED | JMP | | | | |
| FILE: | | | | | |
| No. | DATE | REVISION | BY | APRVD. | |

PROJECT COORDINATION NOTES

1. THE CONTRACTOR IS REQUIRED TO COORDINATE CONSTRUCTION ACTIVITIES WITH THE CBJ PARKS AND RECREATION DEPARTMENT, CBJ SCHOOL DISTRICT FACILITIES MANAGER AND FLOYD DRYDEN MIDDLE SCHOOL PRINCIPLE.
2. ADAIR-KENNEDY FIELD WILL BE CLOSED TO THE PUBLIC FROM MAY 15, 2012 TO JULY 15, 2012 FOR THE CONTRACTOR TO PERFORM THIS WORK.
3. FLOYD DRYDEN MIDDLE SCHOOL LAST DAY OF SCHOOL IS MAY 31, 2012.

TRUCK HAUL ROUTE/SITE ACCESS NOTES

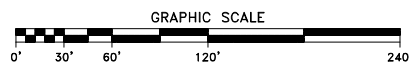
- A MENDENHALL LOOP ROAD AND THE FLOYD DRYDEN MIDDLE SCHOOL ACCESS ROAD SHALL BE KEPT CLEAN BY USE OF POWER SWEEPERS, CAPABLE OF PICKING UP DEBRIS FROM THE ROAD AND/OR WASHING DURING HAULING OPERATIONS, OR MORE FREQUENTLY, AS DIRECTED BY THE ENGINEER
- B THE CONTRACTOR SHALL PROTECT AND MAINTAIN EXISTING RUBBERIZED ASPHALT RUNNING TRACK AND STRIPING BY PLACING A PROTECTIVE COVERING SYSTEM OVER THE TRACK FOR CONTRACTORS EQUIPMENT/TRUCKS CROSSING THE TRACK. THE TRACK CROSSING SHALL INCLUDE INSTALLATION OF A CONTAINER FLAT SPANNING ACROSS THE WIDTH OF THE TRACK SURFACE AND BEARING ON ANCHORED TIMBERS. GEOTEXTILE AND 3/4" PLYWOOD SHEETS SHALL BE PLACED ON THE TRACK SURFACE TO ASSIST IN PREVENTING DAMAGE. ALTERNATE CONSTRUCTION TRACK CROSSING SYSTEMS MAY BE USED UPON REVIEW AND APPROVAL BY THE ENGINEER.
- C CONSTRUCTION EQUIPMENT AND MATERIALS ACCESS TO ADAIR KENNEDY FIELD IS LIMITED TO THE EXISTING FLOYD DRYDEN MIDDLE SCHOOL ACCESS ROAD AND THEN ACCESSING THE FIELD THROUGH THE WEST ACCESS GATE, AS SHOWN.
- D ANY DAMAGE TO THE TRACK SURFACE, STRIPING, PERIMETER CURB, FENCING, ASPHALT PAVEMENT, BUILDINGS OR OTHER EXISTING ABOVE GROUND OBJECTS AND STRUCTURES FROM THE CONTRACTORS OPERATIONS, SHALL BE RESTORED TO PRE-CONSTRUCTION CONDITIONS OR BETTER AT THE CONTRACTORS EXPENSE.
- E CONTRACTOR'S STAGING AREA, SUBJECT TO REVISION AFTER SCHOOL IS OUT FOR SUMMER, (5-31-12).
- F CONTRACTOR TO ALLOW UNRESTRICTED ACCESS TO THE ADAIR-KENNEDY BASEBALL FIELD AND ASSOCIATED EQUIPMENT SHEDS.



| | |
|----------|---------|
| DESIGN | JMP |
| DRAWN | MLL |
| CHECK | JMP/MAJ |
| APPROVED | JMP |
| FILE: | |

| No. | DATE | REVISION | BY | APRVD. |
|-----|------|----------|----|--------|
| | | | | |
| | | | | |
| | | | | |

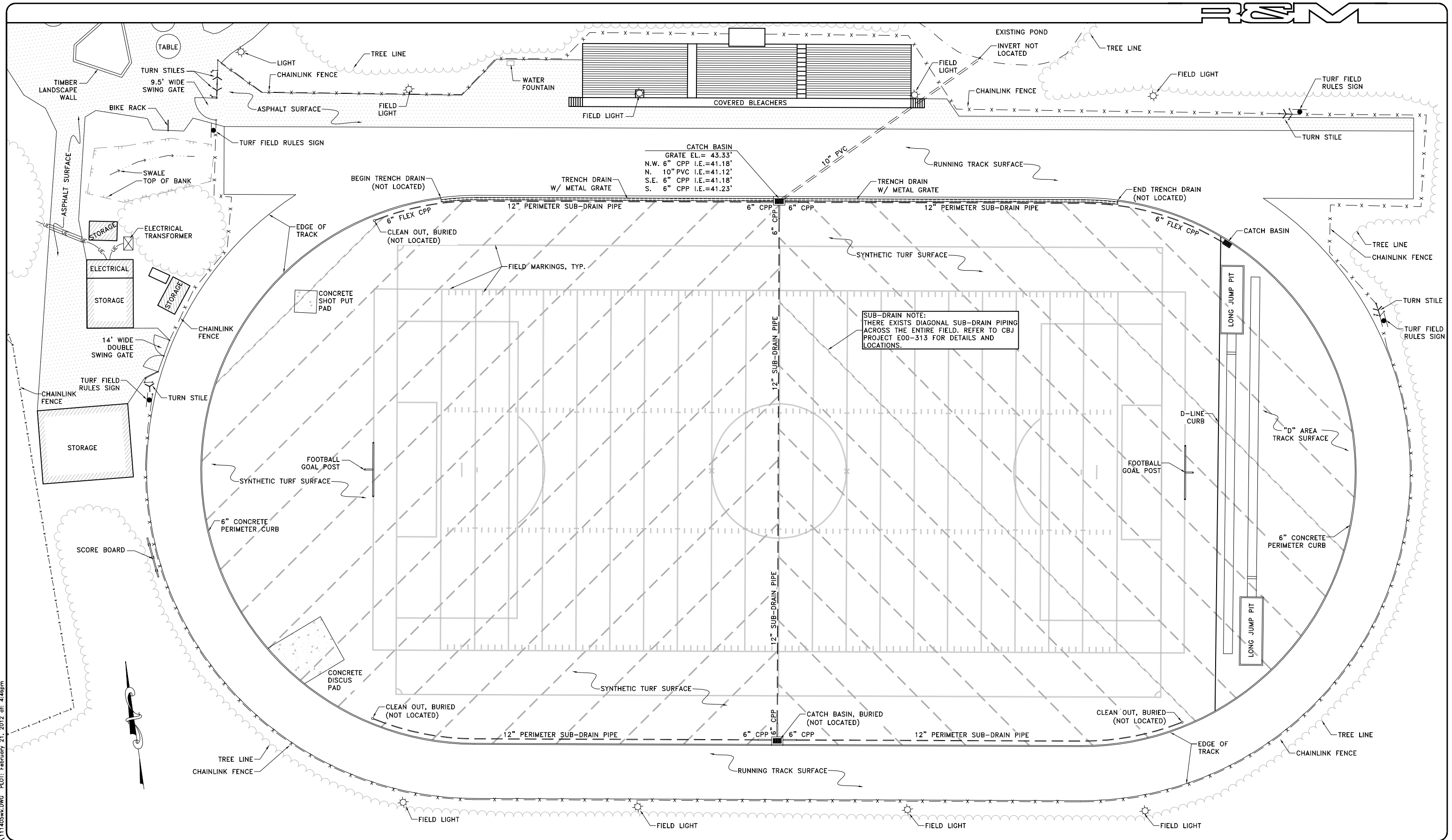
TRUCK HAUL ROUTE, PROJECT SEQUENCE PLAN & CONTRACTOR STAGING AREA



R & M ENGINEERING, INC.
ENGINEERS GEOLOGISTS SURVEYORS
6205 GLACIER HIGHWAY Phone 907-780-6060
JUNEAU, AK. 99801 Fax 907-780-4611
www.rmjuneau.com

ADAIR-KENNEDY FOOTBALL/SOCCER
FIELD SYNTHETIC TURF REPLACEMENT
CBJ CONTRACT No. E12-189
CITY & BOROUGH OF JUNEAU, ALASKA

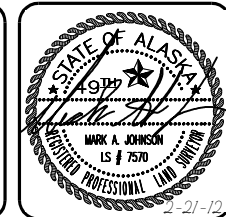
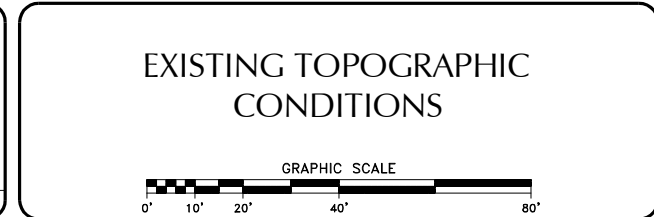
| |
|---------------------|
| DATE: FEB. 21, 2012 |
| R & M No. 111405 |
| SHEET C103 |



I:\2011\111405\Design Drawings\EP\111405wk.DWG PLOT: February 21, 2012 at: 4:46pm

| | |
|----------|---------|
| DESIGN | JMP |
| DRAWN | MLL |
| CHECK | JMP/MAJ |
| APPROVED | JMP |
| FILE: | |

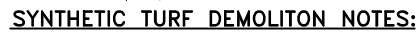
| No. | DATE | REVISION | BY | APRVD. |
|-----|------|----------|----|--------|
| | | | | |



RAM
R & M ENGINEERING, INC.
 ENGINEERS GEOLOGISTS SURVEYORS
 6205 GLACIER HIGHWAY Phone 907-780-6060
 JUNEAU, AK. 99801 Fax 907-780-4611
 www.rmjuneau.com

**ADAIR-KENNEDY FOOTBALL/SOCCER
 FIELD SYNTHETIC TURF REPLACEMENT
 CBJ CONTRACT No. E12-189**
 CITY & BOROUGH OF JUNEAU, ALASKA

| |
|---------------------|
| DATE: FEB. 21, 2012 |
| R & M No. 111405 |
| SHEET C200 |

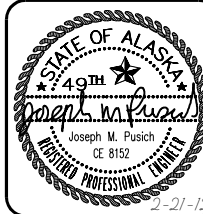


- ① TURF DEMOLITION SEQUENCE SHALL BE AS FOLLOWS:
 - A) CONTRACTOR SHALL DETACH EXISTING TURF SURFACE MATERIAL FROM EXISTING TURF NAILER BOARD OR CONCRETE CURBING. ANY DAMAGE TO EXISTING NAILER BOARD OR CURB SHALL BE REPLACED BY THE CONTRACTOR AT NO COST TO CBJ.
 - B) EXISTING TURF MATERIAL SHALL BE CUT AT EXISTING GLUED SEAMS FOR FULL WIDTH OR LENGTH OF SEAM AND AT OTHER LOCATIONS AS REQUIRED.
 - C) TURF SHALL BE ROLLED UP AND CUT IN SECTIONS WITH SIZE OF ROLL DEPENDANT UPON CONTRACTORS HAULING EQUIPMENT AND DISPOSAL METHODS. NO TURF SHALL BE REMOVED BY GRABBING TURF WITH EXCAVATOR BUCKET/THUMB ATTACHMENT. THE TURF AND RUBBER INFILL SHALL BE REMOVED IN AN ORDERLY FASHION TO AVOID EXCESSIVE DISTURBANCE TO THE TURF BASE.
 - D) EXISTING RUBBER INFILL MATERIAL SHALL NOT BE DEPOSITED INTO THE EXISTING TURF BASE MATERIAL. EXISTING RUBBER INFILL MATERIAL SPILLED ON THE EXISTING TURF BASE MATERIAL SHALL BE REMOVED BY THE CONTRACTOR.
- ② ALTERNATE TURF REMOVAL AND DISPOSAL METHODS MAY BE SUBMITTED TO THE ENGINEER FOR REVIEW AND POSSIBLE APPROVAL.

| | | | | |
|--------------------------|--|--|--|--|
| DESIGN <u> JMP </u> | | | | |
| DRAWN <u> MLL </u> | | | | |
| CHECK <u> JMP/MAJ </u> | | | | |
| APPROVED <u> JMP </u> | | | | |
| FILE: | | | | |

GRAPHIC SCALE

0' 10' 20' 40' 80'



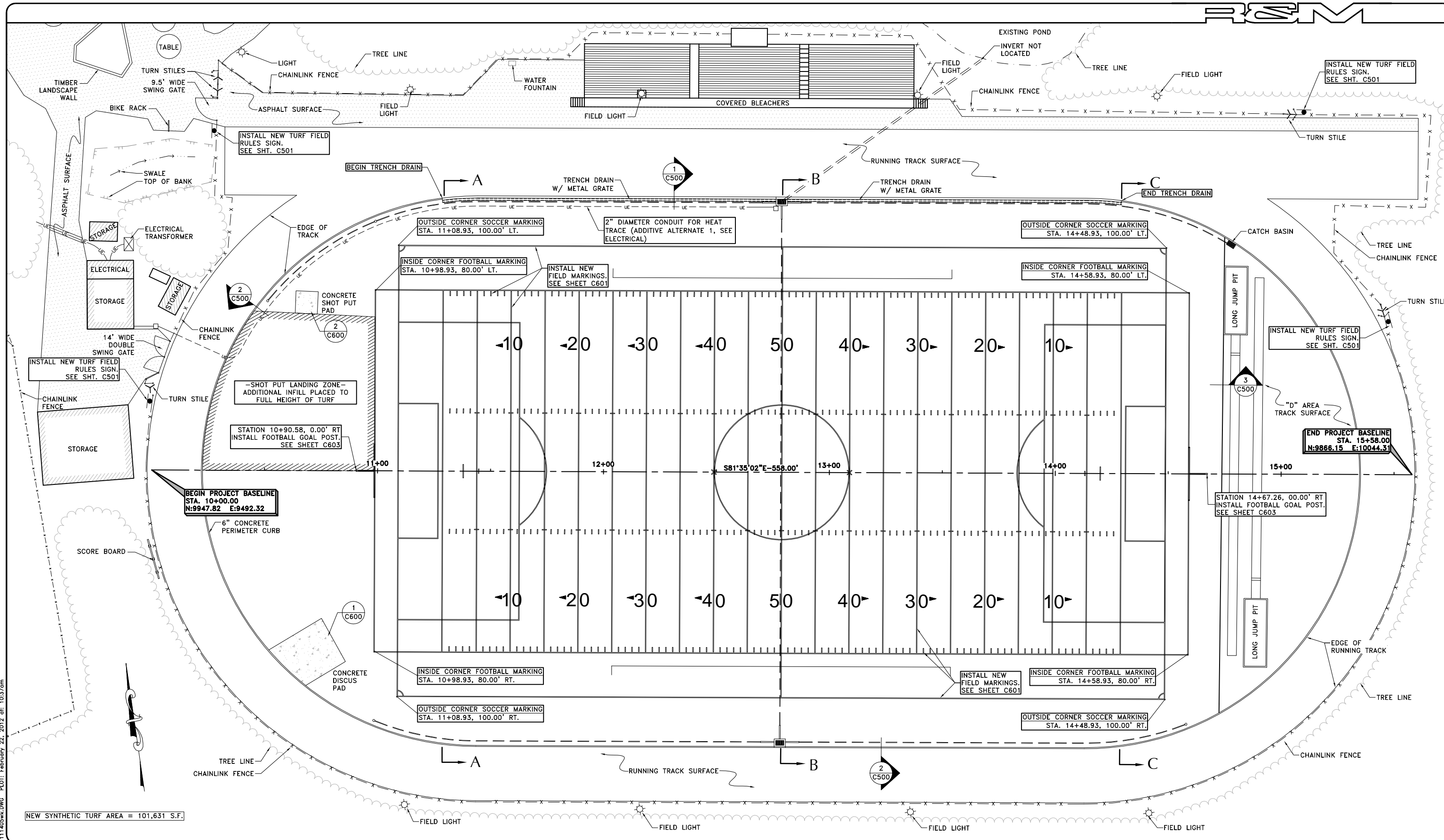
R & M ENGINEERING, INC.

ENGINEERS GEOLOGISTS SURVEYORS

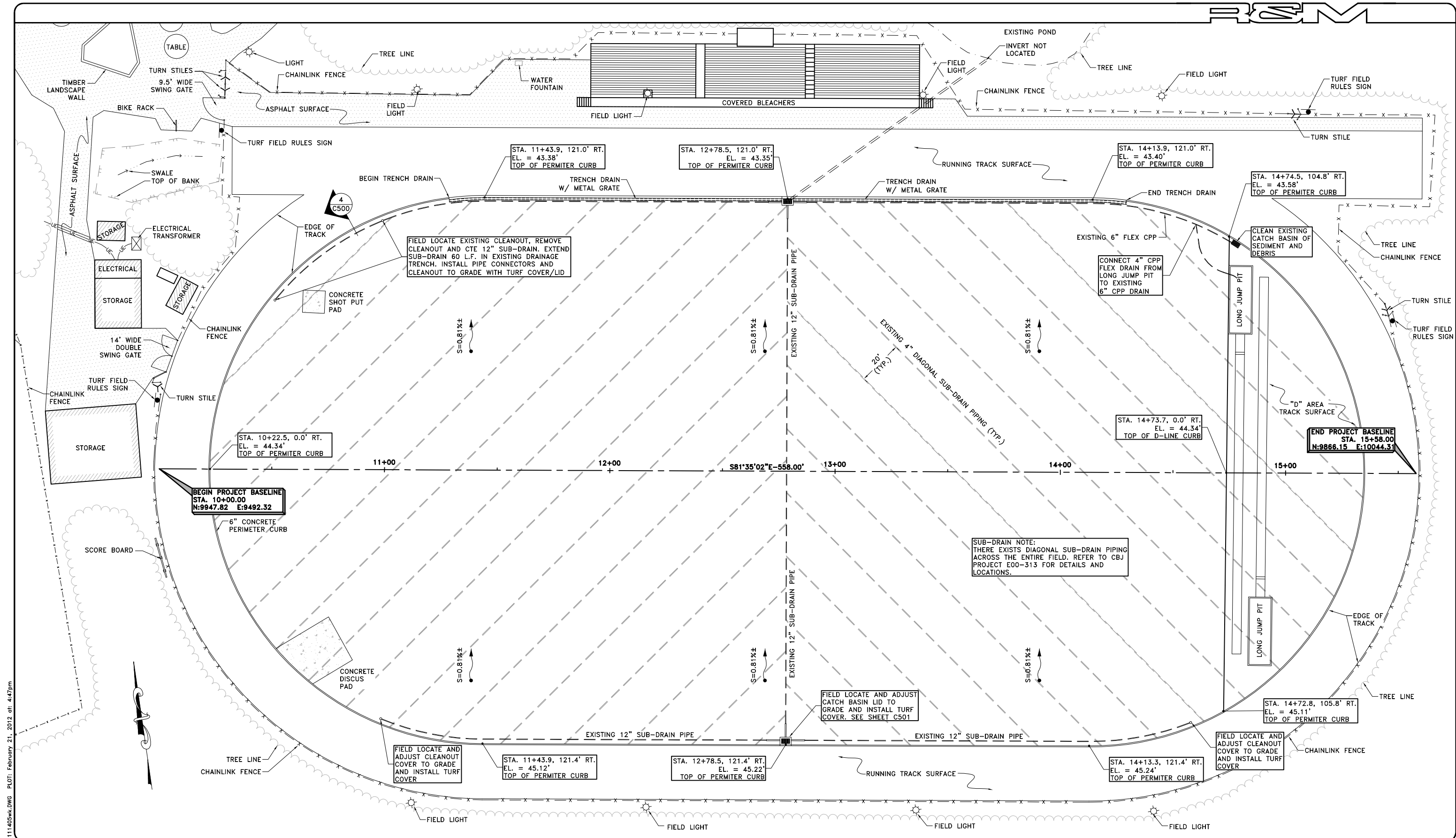
6205 GLACIER HIGHWAY
JUNEAU, AK. 99801

Phone 907-780-6060
Fax 907-780-4611
www.rmjuneau.com

ADAIR-KENNEDY FOOTBALL/SOCCER
FIELD SYNTHETIC TURF REPLACEMENT
CBJ CONTRACT No. E12-189
CITY & BOROUGH OF JUNEAU, ALASKA



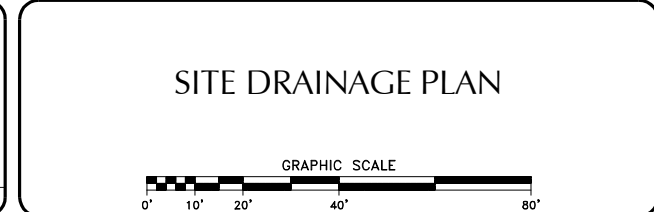
| DESIGN <u>JMP</u> DRAWN <u>MLL</u> CHECK <u>JMP/MAJ</u> APPROVED <u>JMP</u> FILE: | <table border="1" style="width: 100%; border-collapse: collapse;"> <tr> <th>No.</th> <th>DATE</th> <th>REVISION</th> <th>BY</th> <th>APRVD.</th> </tr> <tr> <td> </td> <td> </td> <td> </td> <td> </td> <td> </td> </tr> </table> | No. | DATE | REVISION | BY | APRVD. | | | | | | <h2 style="margin: 0;">SITE PLAN</h2> <p style="margin: 5px 0;">GRAPHIC SCALE</p> <p style="margin: 0;">0' 10' 20' 40' 80'</p> | | <h2 style="margin: 0;">R & M ENGINEERING, INC.</h2> <p style="margin: 0;">ENGINEERS GEOLOGISTS SURVEYORS</p> <p style="margin: 0;">6205 GLACIER HIGHWAY Phone 907-780-6060</p> <p style="margin: 0;">JUNEAU, AK. 99801 Fax 907-780-4611</p> <p style="margin: 0;">www.rmjunEAU.com</p> | <h2 style="margin: 0;">ADAIR-KENNEDY FOOTBALL/SOCCER</h2> <h3 style="margin: 0;">FIELD SYNTHETIC TURF REPLACEMENT</h3> <p style="margin: 0;">CBJ CONTRACT No. E12-189</p> <p style="margin: 0;">CITY & BOROUGH OF JUNEAU, ALASKA</p> | DATE: <u>FEB. 21, 2012</u> R & M No. <u>111405</u> SHEET C400 |
|---|---|----------|------|----------|----|--------|--|--|--|--|--|--|--|--|--|---|
| No. | DATE | REVISION | BY | APRVD. | | | | | | | | | | | | |
| | | | | | | | | | | | | | | | | |



I:\2011\111405\Design Drawings\EP\111405wk.DWG PLOT: February 21, 2012 at: 4:47pm

| | |
|----------|---------|
| DESIGN | JMP |
| DRAWN | MLL |
| CHECK | JMP/MAJ |
| APPROVED | JMP |
| FILE: | |

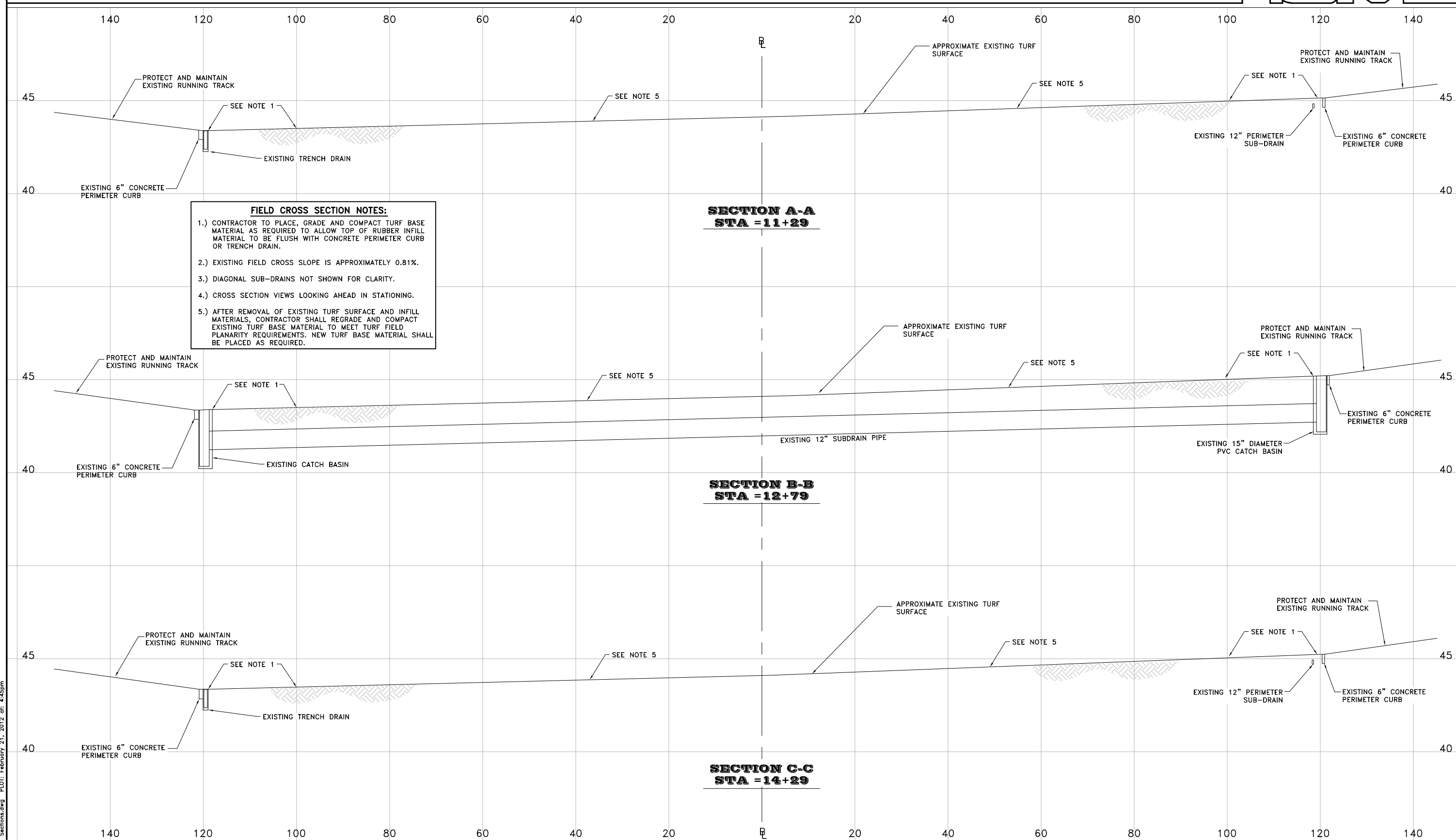
| No. | DATE | REVISION | BY | APRVD. |
|-----|------|----------|----|--------|
| | | | | |



R & M ENGINEERING, INC.
 ENGINEERS GEOLOGISTS SURVEYORS
 6205 GLACIER HIGHWAY Phone 907-780-6060
 JUNEAU, AK. 99801 Fax 907-780-4611
 www.rmjuneau.com

ADAIR-KENNEDY FOOTBALL/SOCCER
FIELD SYNTHETIC TURF REPLACEMENT
CBJ CONTRACT No. E12-189
 CITY & BOROUGH OF JUNEAU, ALASKA

DATE: FEB. 21, 2012
 R & M No. 111405
 SHEET **C401**



FIELD CROSS SECTION NOTES:

- 1.) CONTRACTOR TO PLACE, GRADE AND COMPACT TURF BASE MATERIAL AS REQUIRED TO ALLOW TOP OF RUBBER INFILL MATERIAL TO BE FLUSH WITH CONCRETE PERIMETER CURB OR TRENCH DRAIN.
- 2.) EXISTING FIELD CROSS SLOPE IS APPROXIMATELY 0.81%.
- 3.) DIAGONAL SUB-DRAINS NOT SHOWN FOR CLARITY.
- 4.) CROSS SECTION VIEWS LOOKING AHEAD IN STATIONING.
- 5.) AFTER REMOVAL OF EXISTING TURF SURFACE AND INFILL MATERIALS, CONTRACTOR SHALL REGRADE AND COMPACT EXISTING TURF BASE MATERIAL TO MEET TURF FIELD PLANARITY REQUIREMENTS. NEW TURF BASE MATERIAL SHALL BE PLACED AS REQUIRED.

I:\2011\111405\Design Drawings\Cross Sections.dwg PLOT: February 21, 2012 at: 4:45pm

| | |
|----------|---------|
| DESIGN | JMP |
| DRAWN | MLL |
| CHECK | JMP/MAJ |
| APPROVED | JMP |
| FILE: | |

| No. | DATE | REVISION | BY | APRVD. |
|-----|------|----------|----|--------|
| | | | | |

FIELD CROSS SECTIONS

SCALES:

HORIZONTAL 1" = 20' @ HALF SIZE

VERTICAL 1" = 5' @ HALF SIZE



RAM

R & M ENGINEERING, INC.

ENGINEERS GEOLOGISTS SURVEYORS

6205 GLACIER HIGHWAY Phone 907-780-6060

JUNEAU, AK. 99801 Fax 907-780-4611

www.rmjuneau.com

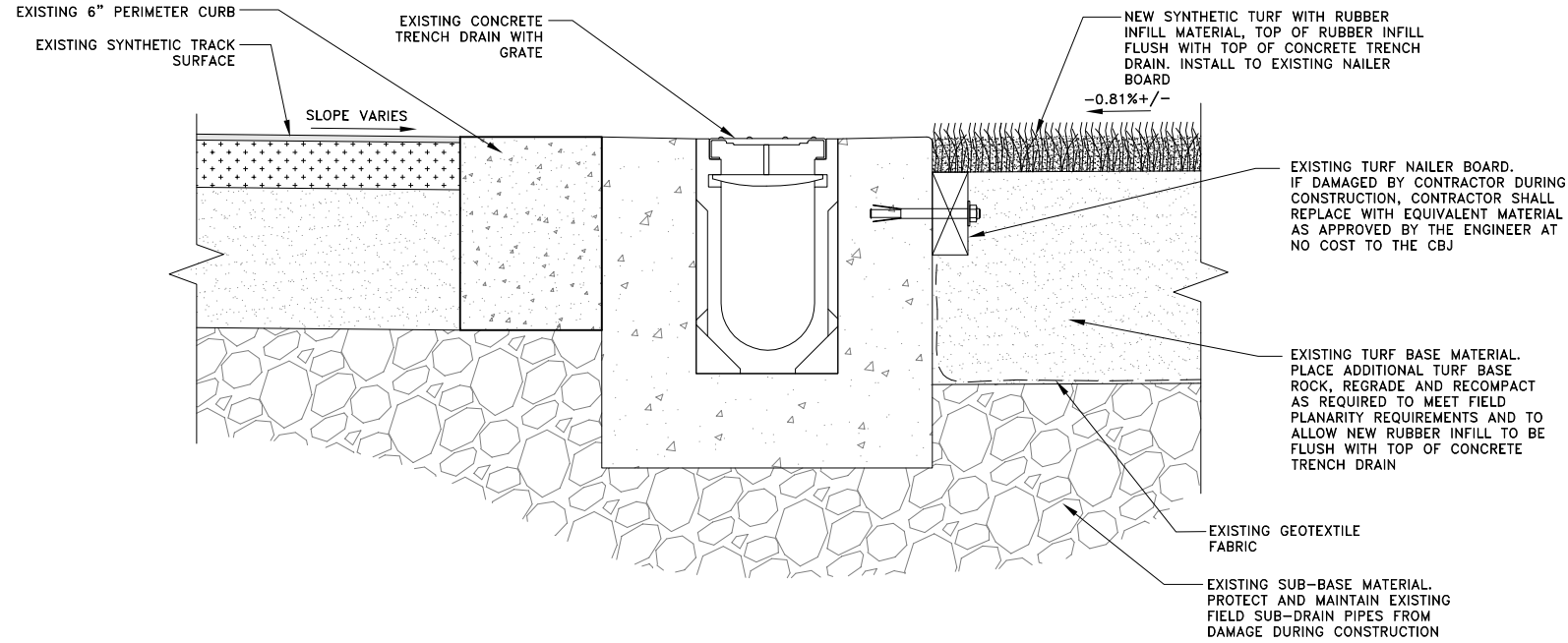
ADAIR-KENNEDY FOOTBALL/SOCCER

FIELD SYNTHETIC TURF REPLACEMENT

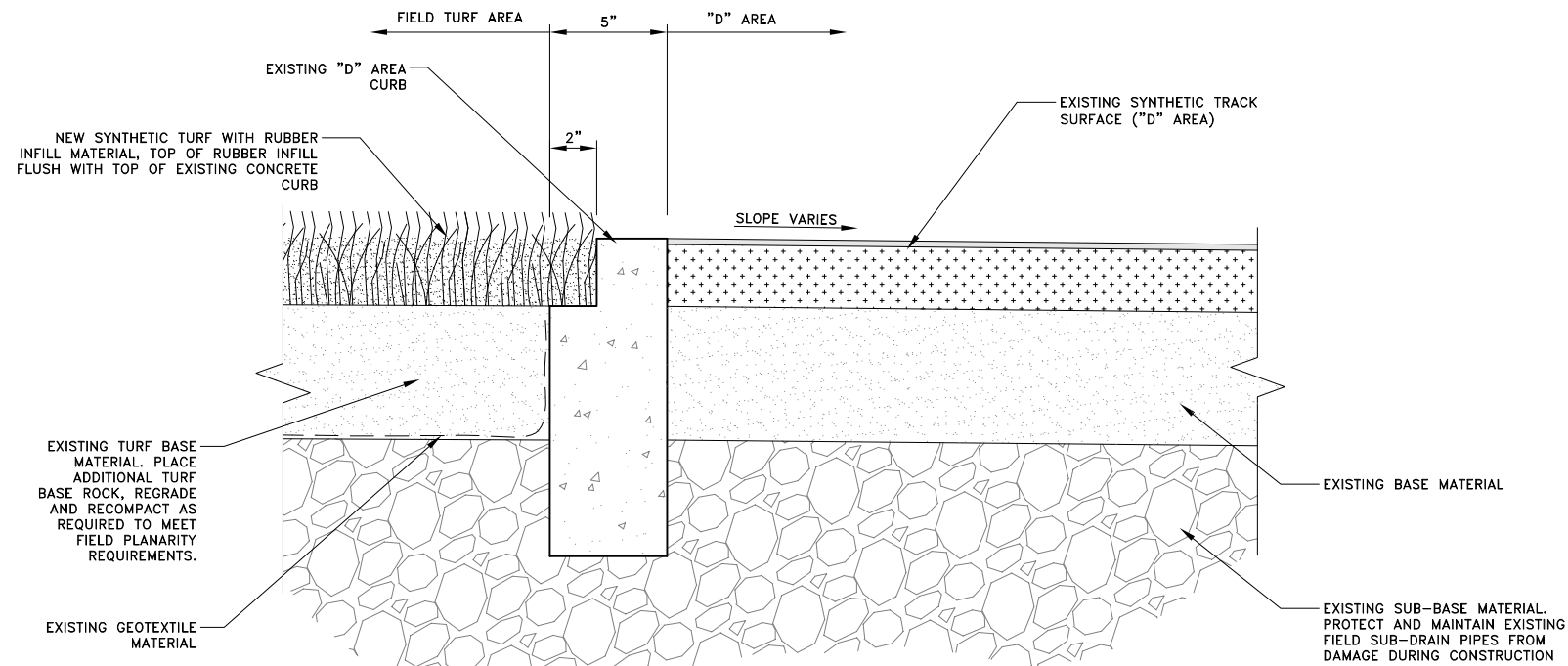
CBJ CONTRACT No. E12-189

CITY & BOROUGH OF JUNEAU, ALASKA

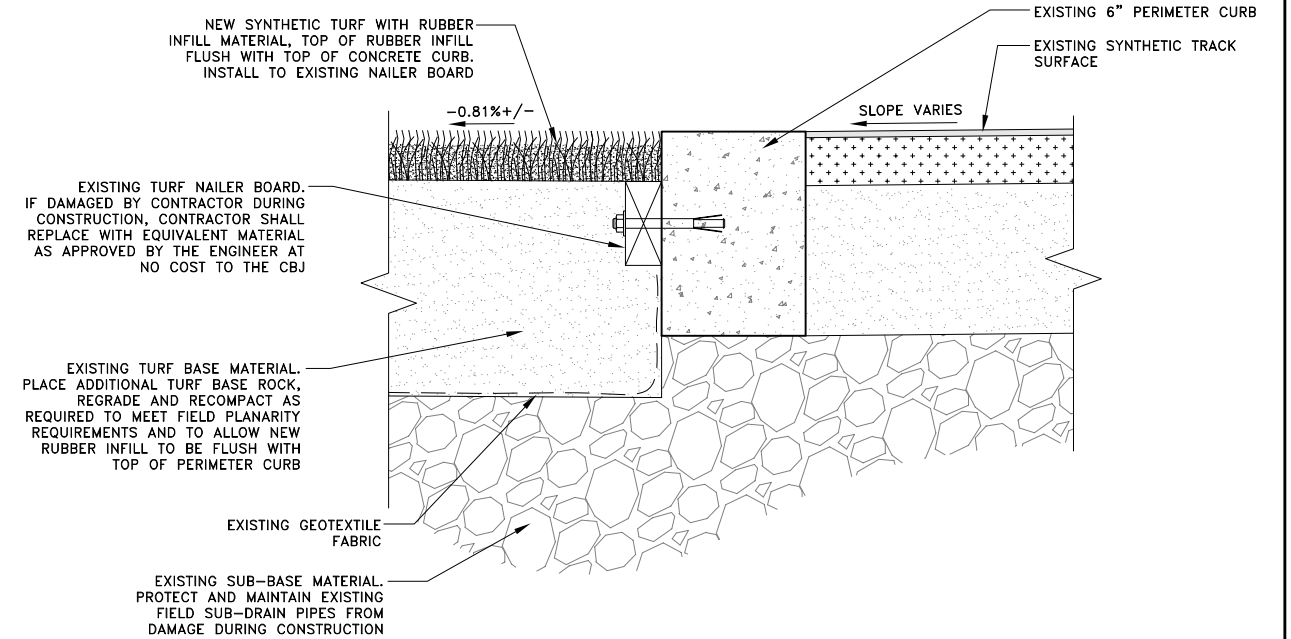
| |
|---------------------|
| DATE: FEB. 21, 2012 |
| R & M No. 111405 |
| SHEET |
| C402 |



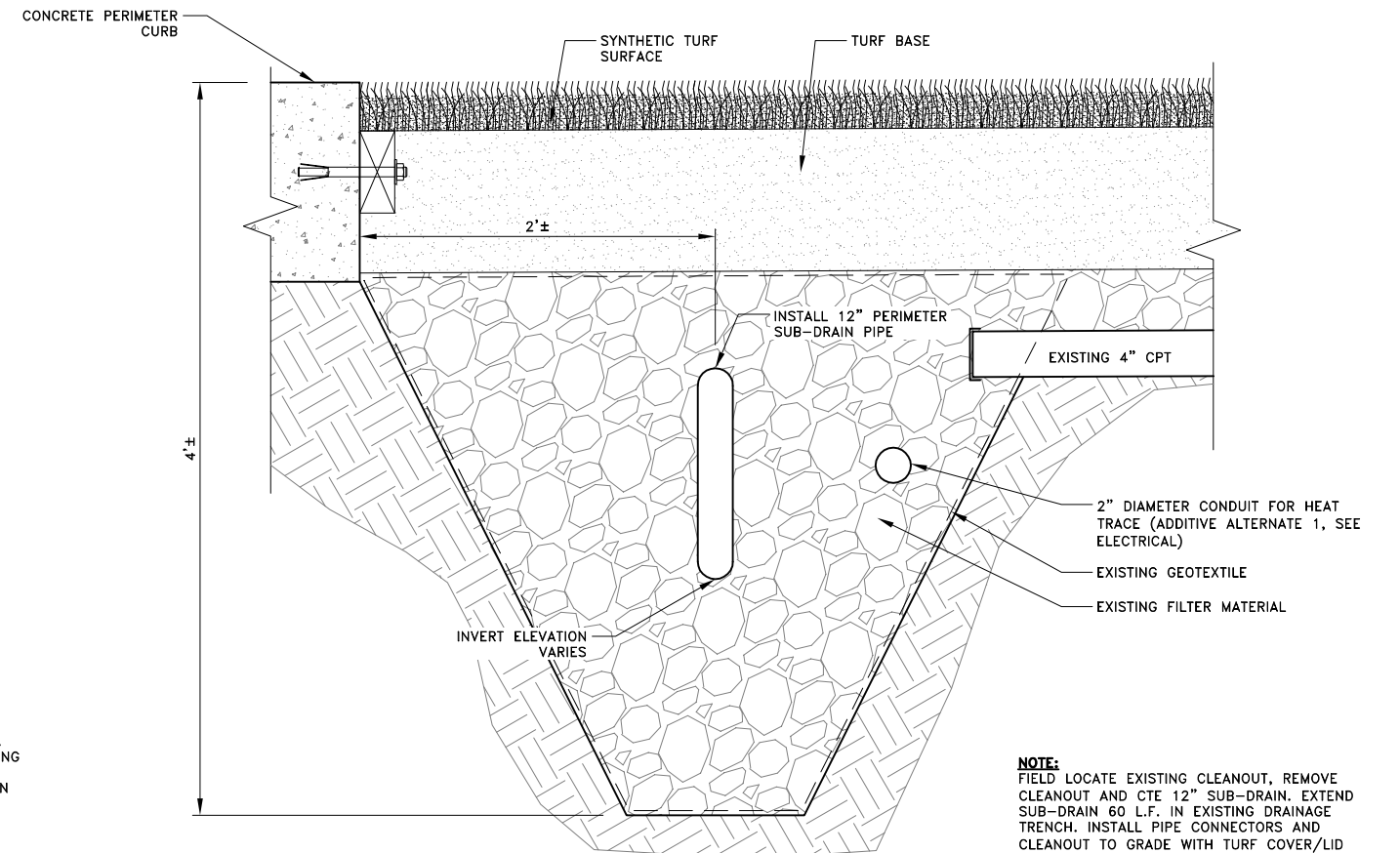
1 SYNTHETIC TURF TO TRENCH DRAIN DETAIL
N.T.S.



3 SYNTHETIC TURF TO "D" AREA CURB DETAIL
N.T.S.



2 SYNTHETIC TURF TO PERIMETER CURB DETAIL
N.T.S.



4 FIELD PERIMETER SUB-DRAIN DETAIL
N.T.S.

TURF FIELD DETAILS

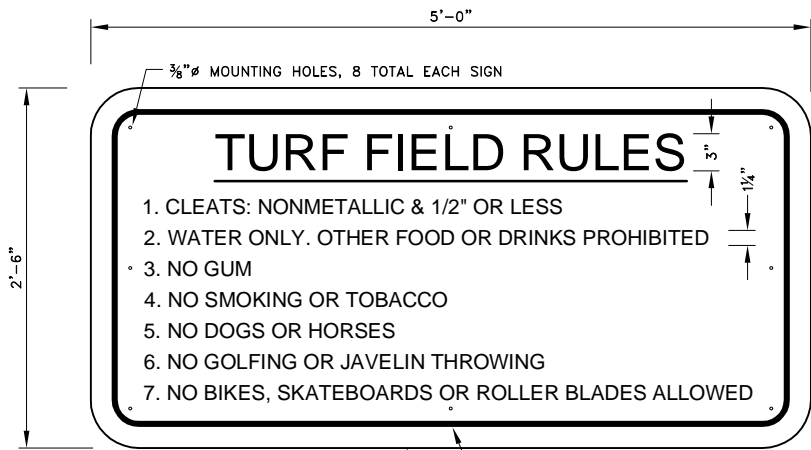


R & M ENGINEERING, INC.
ENGINEERS GEOLOGISTS SURVEYORS
6205 GLACIER HIGHWAY Phone 907-780-6060
JUNEAU, AK. 99801 Fax 907-780-4611
www.rmjunEAU.com

ADAIR-KENNEDY FOOTBALL/SOCCER
FIELD SYNTHETIC TURF REPLACEMENT
CBJ CONTRACT No. E12-189
CITY & BOROUGH OF JUNEAU, ALASKA

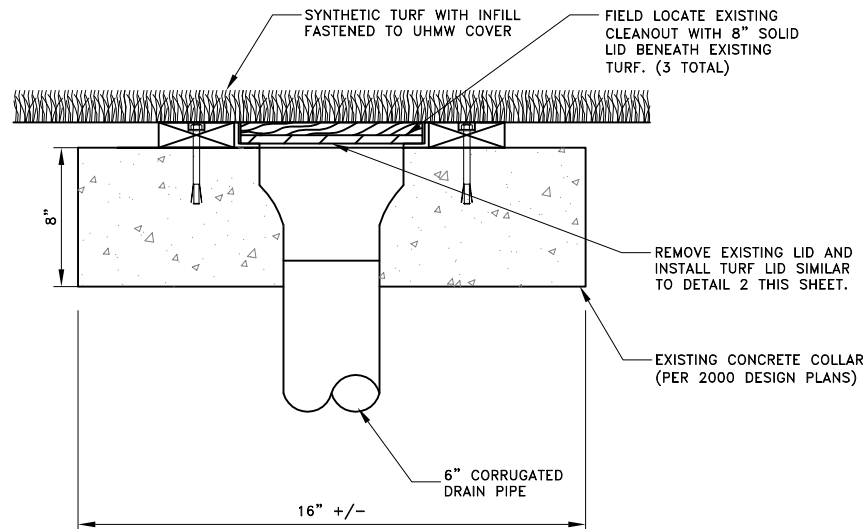
| | |
|----------|---------|
| DESIGN | JMP |
| DRAWN | MLL |
| CHECK | JMP/MAJ |
| APPROVED | JMP |
| FILE: | |

| No. | DATE | REVISION | BY | APRVD. |
|-----|------|----------|----|--------|
| | | | | |
| | | | | |
| | | | | |

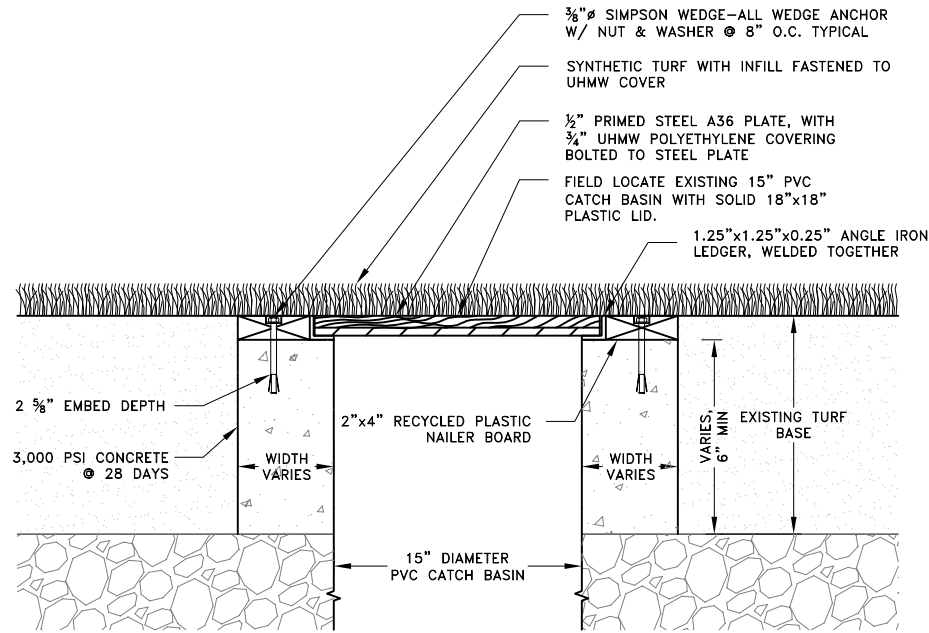


NOTES:
1) TURF FIELD SIGN TO BE MOUNTED TO CHAIN LINK FENCE NEAR ALL GATE ENTRANCES TO FIELD. TOTAL OF 4 SIGNS.
2) REMOVE AND DISPOSE OF EXISTING FIELD TURF SIGNS, 4 EACH.

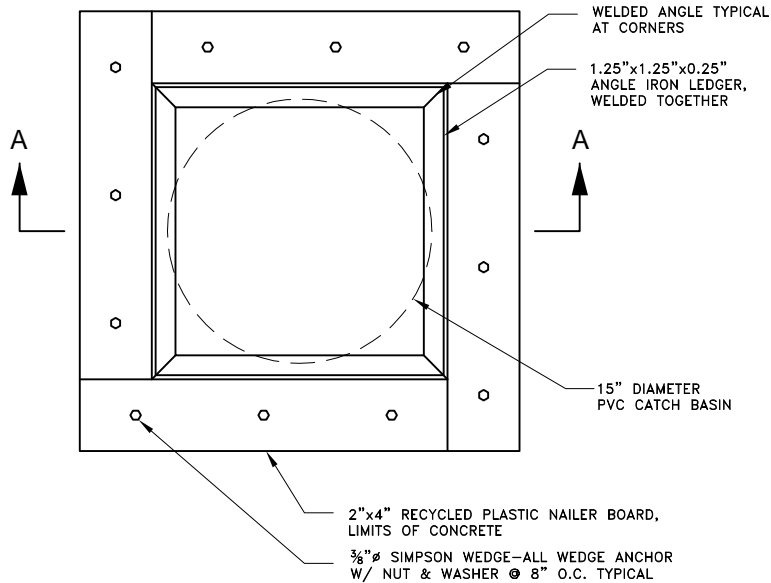
1 TURF FIELD SIGN ASSEMBLY
N.T.S.



3 SUBDRAIN CLEANOUT ADJUSTMENT WITH TURF LID DETAIL
N.T.S.



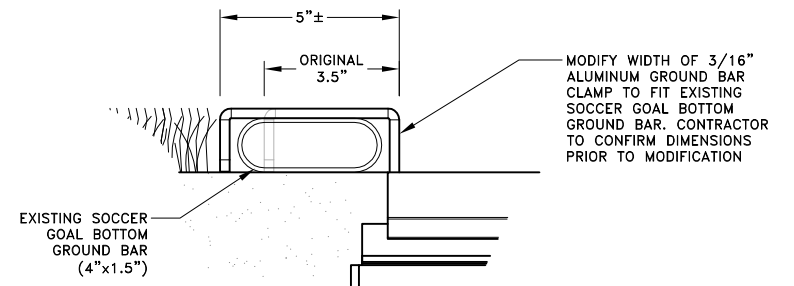
SECTION A-A



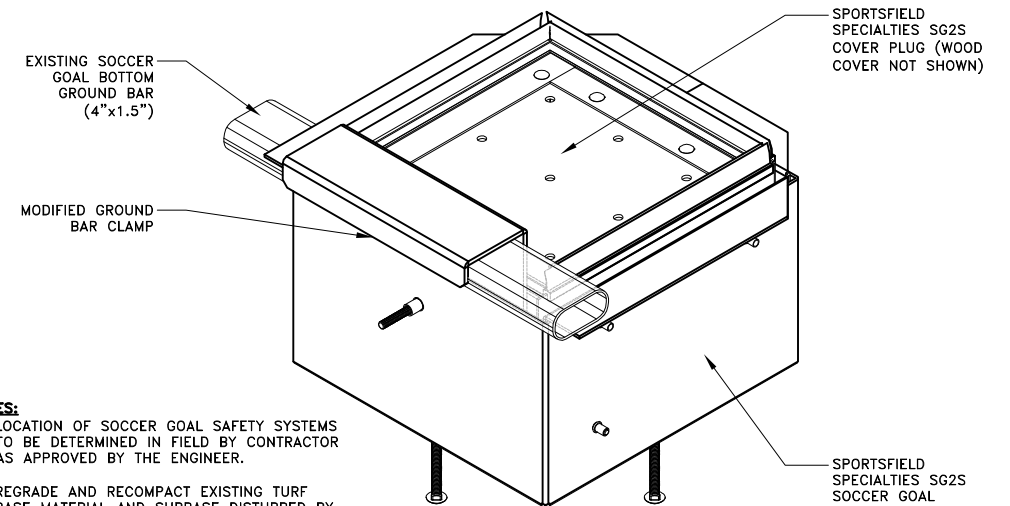
PLAN VIEW

- NOTES:**
1) REMOVE EXISTING 18"x18" PLASTIC CATCH BASIN LID ON TOP OF 15" PVC AND ADJUST 15" PVC TO ALLOW LID AND TURF TO BE INSTALLED.
2) REGRADE AND RECOMPACT EXISTING TURF BASE MATERIAL AND SUBBASE DISTURBED BY THIS WORK.

2 CATCH BASIN ADJUSTMENT WITH TURF LID DETAIL
N.T.S.

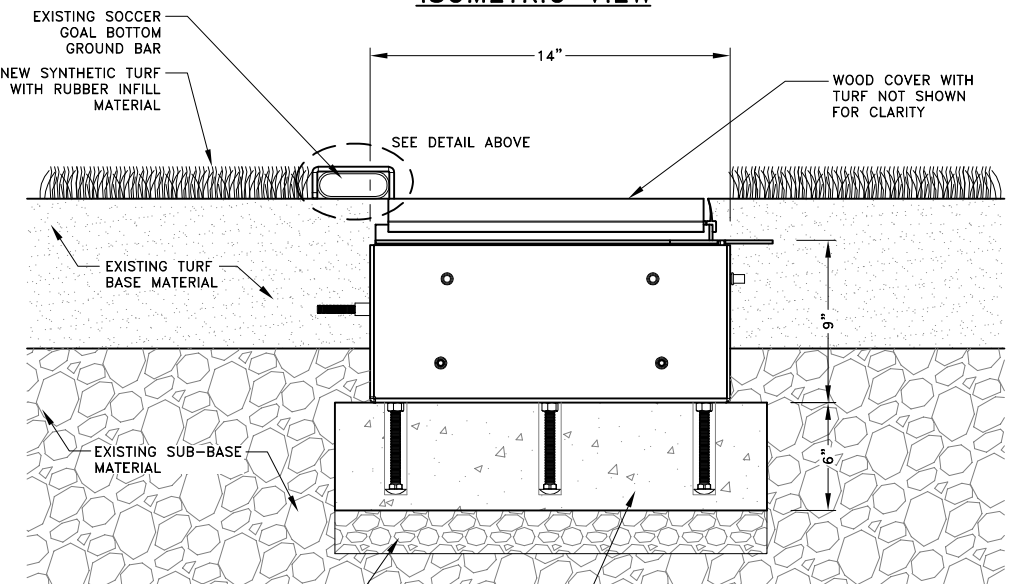


GROUND BAR CLAMP DETAIL



ISOMETRIC VIEW

- NOTES:**
1) LOCATION OF SOCCER GOAL SAFETY SYSTEMS TO BE DETERMINED IN FIELD BY CONTRACTOR AS APPROVED BY THE ENGINEER.
2) REGRADE AND RECOMPACT EXISTING TURF BASE MATERIAL AND SUBBASE DISTURBED BY THIS WORK.



SECTION VIEW

4 SOCCER GOAL SAFETY SYSTEM DETAIL
N.T.S.

TURF FIELD DETAILS



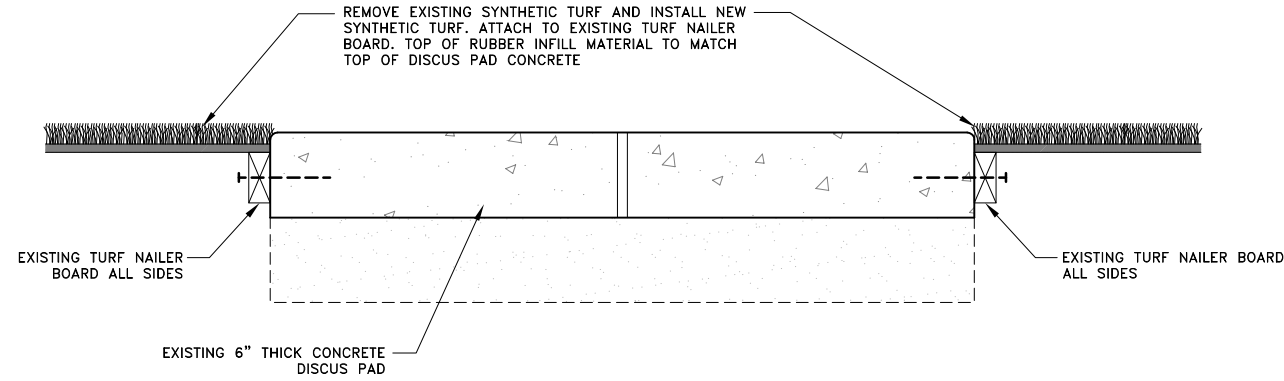
R & M ENGINEERING, INC.
ENGINEERS GEOLOGISTS SURVEYORS
6205 GLACIER HIGHWAY Phone 907-780-6060
JUNEAU, AK. 99801 Fax 907-780-4611
www.rmjunEAU.com

ADAIR-KENNEDY FOOTBALL/SOCCER
FIELD SYNTHETIC TURF REPLACEMENT
CBJ CONTRACT No. E12-189
CITY & BOROUGH OF JUNEAU, ALASKA

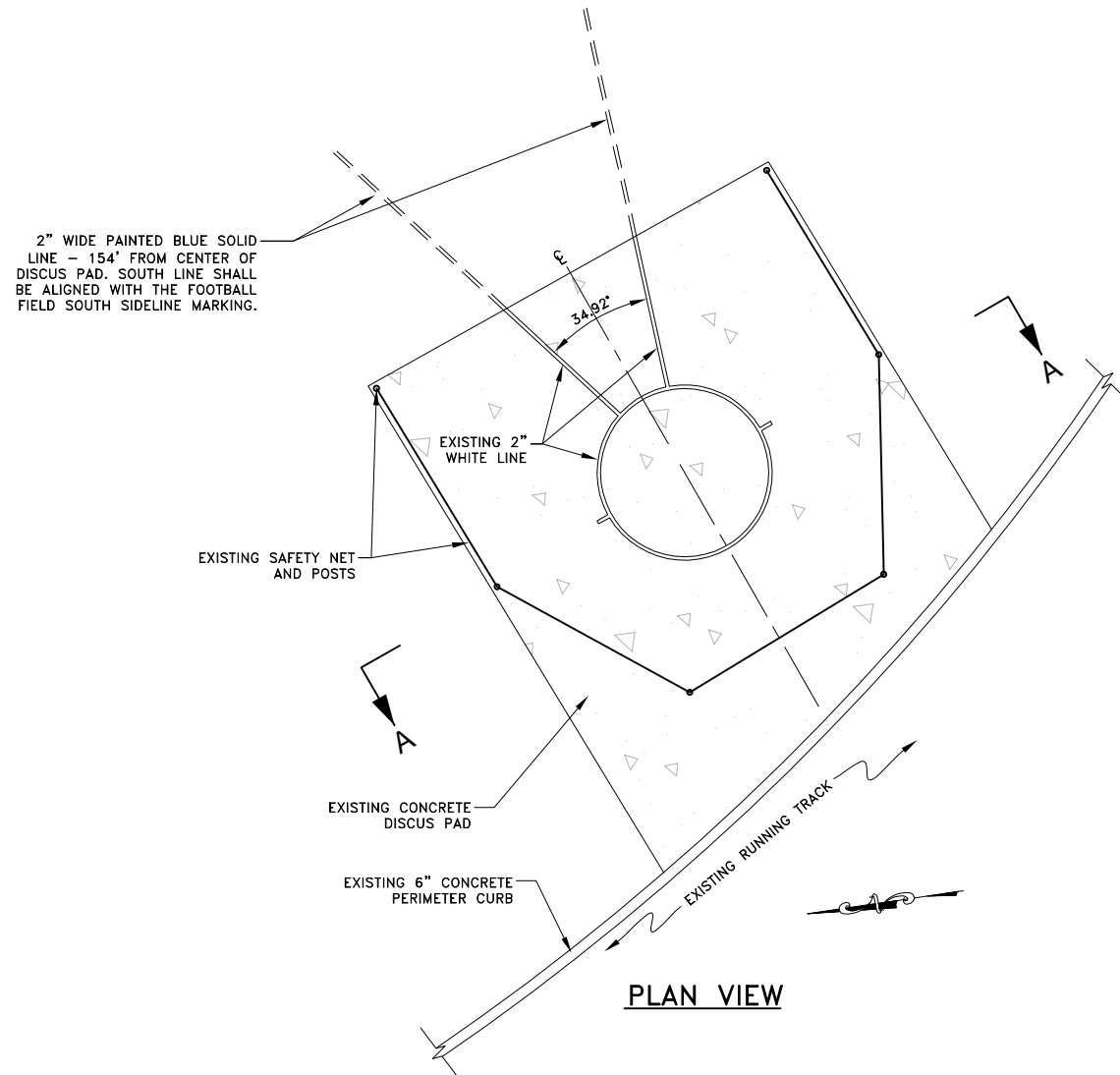
DATE: FEB. 21, 2012
R & M No. 111405
SHEET C501

| | | | | | |
|----------|---------|--|--|--|--|
| DESIGN | JMP | | | | |
| DRAWN | MLL | | | | |
| CHECK | JMP/MAJ | | | | |
| APPROVED | JMP | | | | |
| FILE: | | | | | |

| No. | DATE | REVISION | BY | APRVD. |
|-----|------|----------|----|--------|
| | | | | |

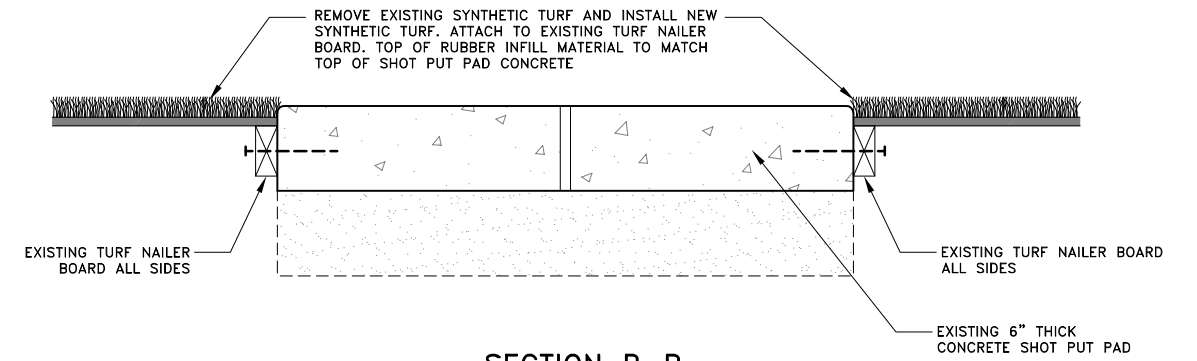


SECTION A-A

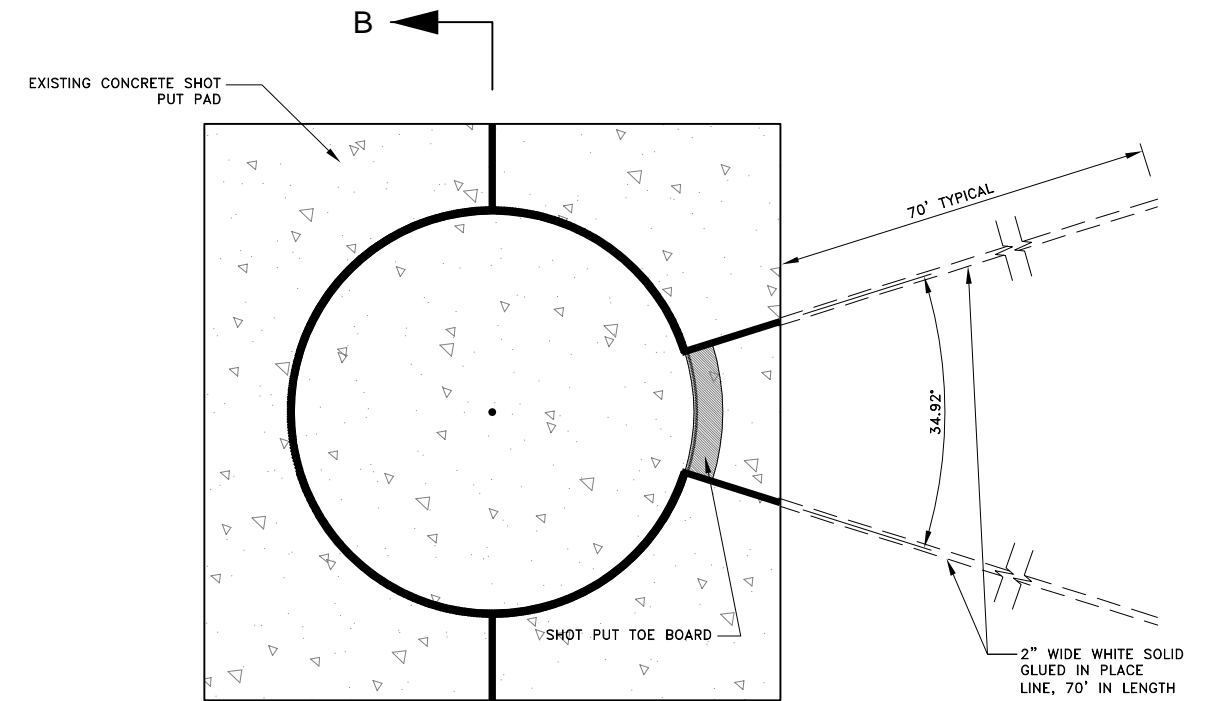


PLAN VIEW

1 DISCUS PAD DETAIL
N.T.S.
VIEW LOOKING AHEAD IN STATIONING



SECTION B-B



PLAN VIEW

2 SHOT PUT PAD DETAIL
N.T.S.
VIEW LOOKING AHEAD IN STATIONING

I:\2011\111405\Design Drawings\Details.dwg PLOT: February 21, 2012 at: 4:44pm

| | |
|----------|---------|
| DESIGN | JMP |
| DRAWN | MLL |
| CHECK | JMP/MAJ |
| APPROVED | JMP |
| FILE: | |

| No. | DATE | REVISION | BY | APRVD. |
|-----|------|----------|----|--------|
| | | | | |

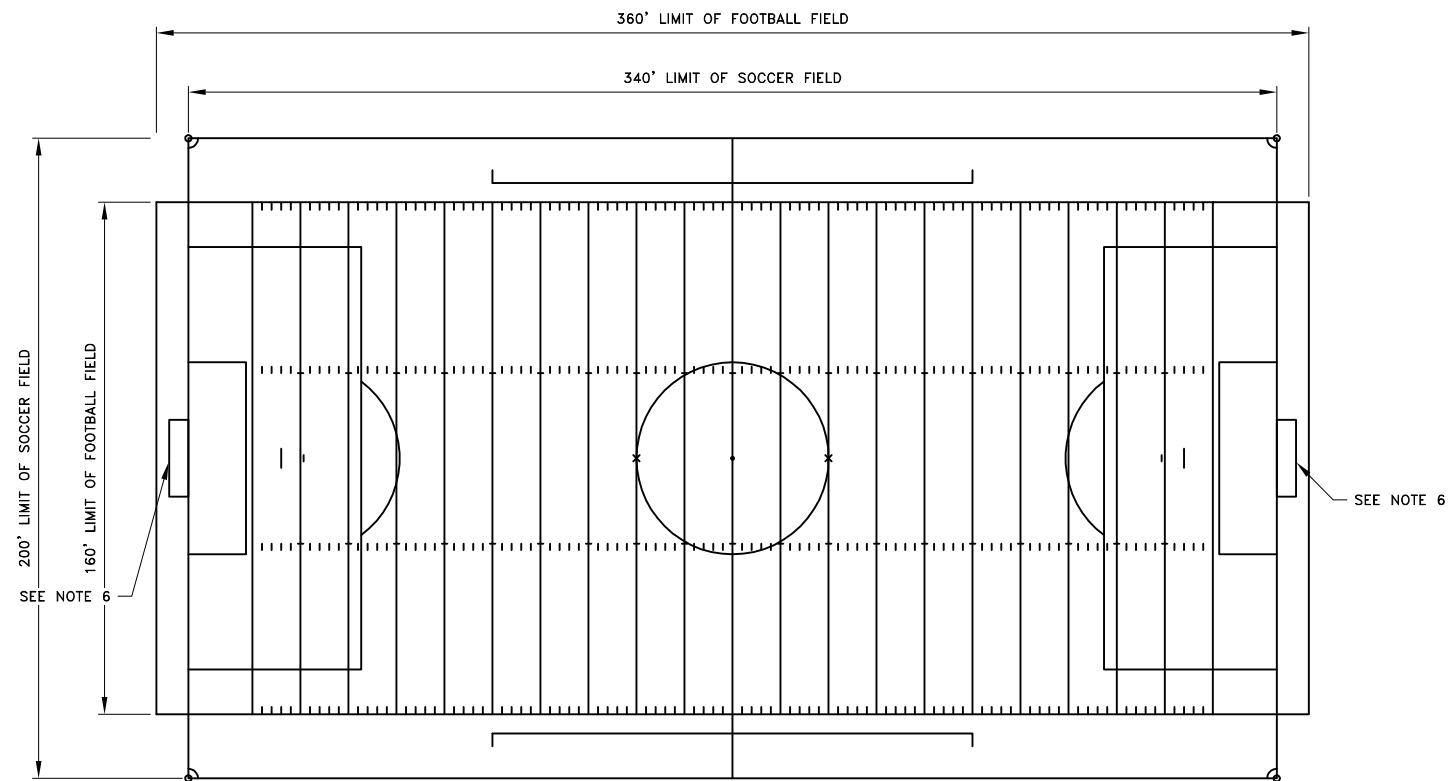
DISCUS AND SHOT PUT PAD DETAILS



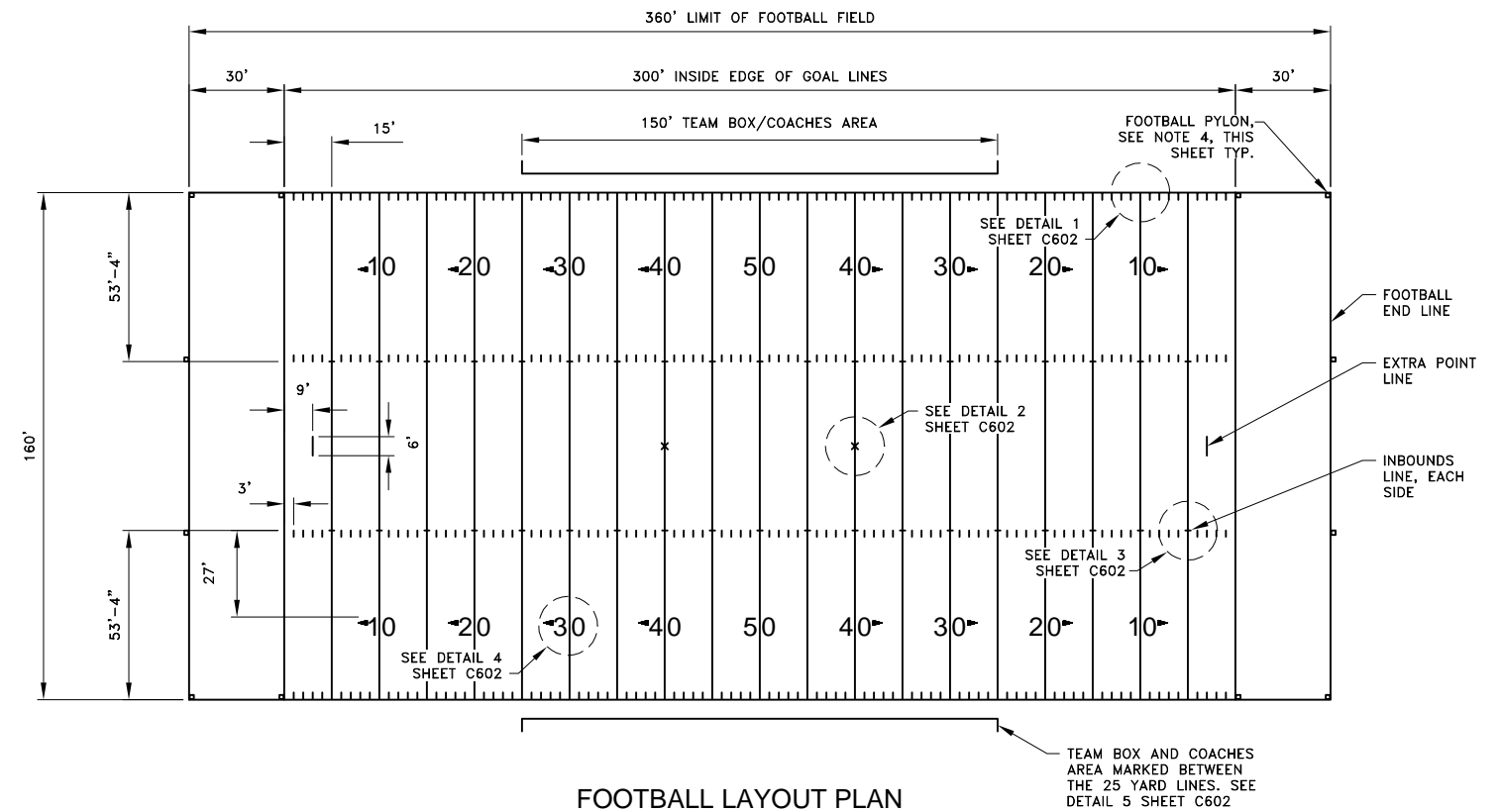
R & M ENGINEERING, INC.
ENGINEERS GEOLOGISTS SURVEYORS
6205 GLACIER HIGHWAY Phone 907-780-6060
JUNEAU, AK. 99801 Fax 907-780-4611
www.rmjuneau.com

ADAIR-KENNEDY FOOTBALL/SOCCER
FIELD SYNTHETIC TURF REPLACEMENT
CBJ CONTRACT No. E12-189
CITY & BOROUGH OF JUNEAU, ALASKA

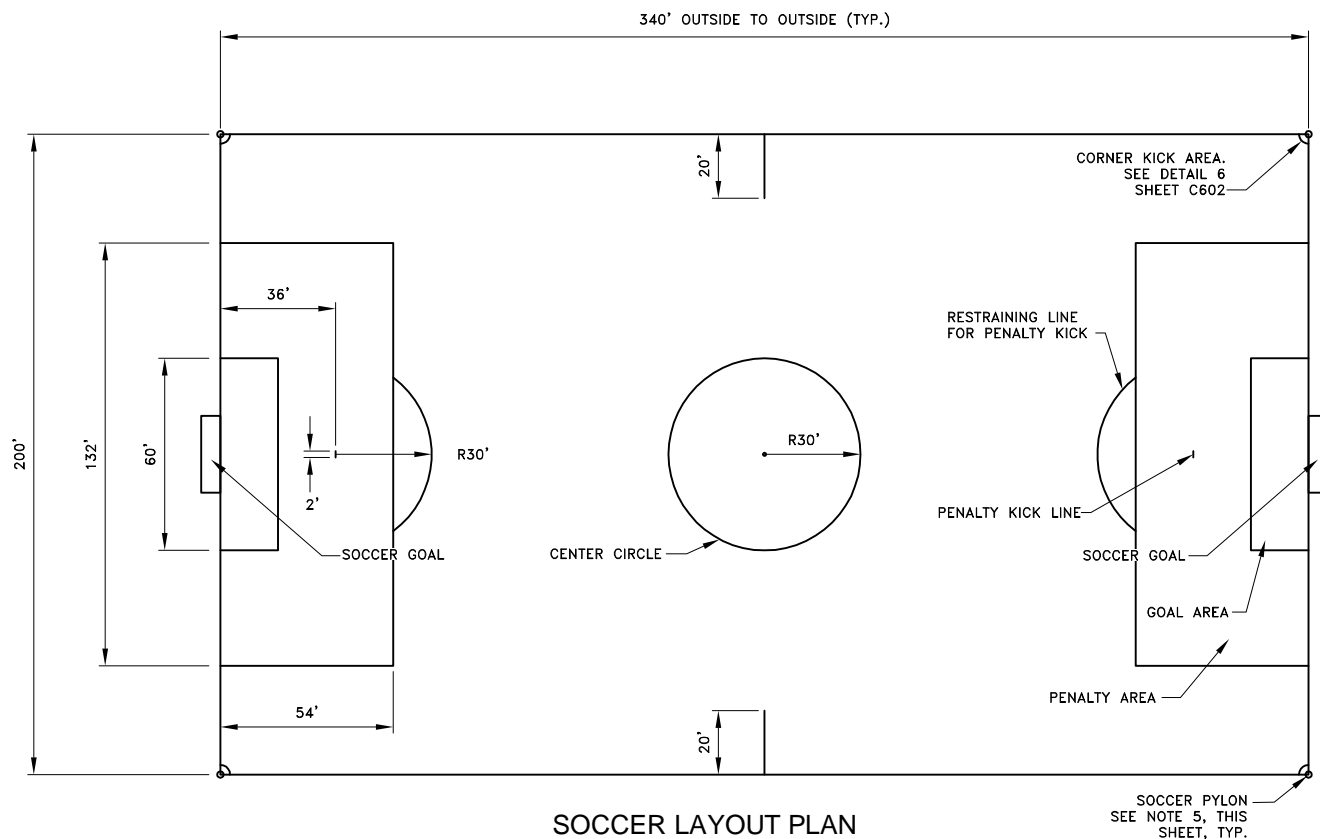
| |
|---------------------|
| DATE: FEB. 21, 2012 |
| R & M No. 111405 |
| SHEET C600 |



FIELD COMPOSITE LAYOUT PLAN



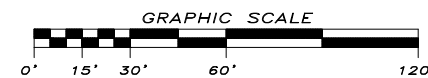
FOOTBALL LAYOUT PLAN



SOCCER LAYOUT PLAN

FIELD LAYOUT, PYLON AND SOCCER GOAL SAFETY SYSTEM NOTES:

1. THE FIELD SHALL BE PROVIDED WITH MARKINGS FOR U.S. HIGH SCHOOL FOOTBALL AND SOCCER FIELDS. FOOTBALL MARKINGS SHALL BE WHITE AND SOCCER MARKINGS SHALL BE YELLOW.
2. ALL MARKINGS SHALL BE 4-INCH WIDE. THE MARKINGS SHALL BE LAID OUT WITH A TOLERANCE OF 1/2-INCH.
3. THE FIELD CENTERLINE SHALL BE A 4-INCH WIDE WHITE LINE THE FULL WIDTH OF THE FOOTBALL FIELD WITH 4-INCH WIDE YELLOW LINES ON EITHER SIDE WITHIN THE SOCCER FIELD PLAYING AREA.
4. SUPPLY (12) ORANGE WEIGHTED BASE FOOTBALL PYLONS, (4"X4"X18"). SEE FOOTBALL LAYOUT PLAN ABOVE FOR LOCATION.
5. SUPPLY (4) WEIGHTED BASE SOCCER PYLONS (1" DIA. X 5' HIGH). SEE SOCCER LAYOUT PLAN FOR LOCATION.
6. INSTALL SOCCER GOAL SAFETY SYSTEM, ONE FOR EACH GOAL. LOCATION TO BE DETERMINED IN FIELD BY CONTRACTOR AND APPROVED BY THE ENGINEER.

**TURF FIELD MARKING PLANS
AND NOTES**

R & M ENGINEERING, INC.
ENGINEERS GEOLOGISTS SURVEYORS
6205 GLACIER HIGHWAY Phone 907-780-6060
JUNEAU, AK. 99801 Fax 907-780-4611
www.rmjuneau.com

ADAIR-KENNEDY FOOTBALL/SOCCER
FIELD SYNTHETIC TURF REPLACEMENT
CBJ CONTRACT No. E12-189
CITY & BOROUGH OF JUNEAU, ALASKA

DATE: FEB. 21, 2012
R & M No. 111405

SHEET
C601

| | |
|----------|---------|
| DESIGN | JMP |
| DRAWN | MLL |
| CHECK | JMP/MAJ |
| APPROVED | JMP |
| FILE: | |

| No. | DATE | REVISION | BY | APRVD. |
|-----|------|----------|----|--------|
| | | | | |
| | | | | |
| | | | | |

1 FOOTBALL SIDELINE / YARD MARKER DETAIL

2 FOOTBALL KICKOFF MARKER
N.T.S.

3 FOOTBALL INBOUND LINE DETAIL

4 FOOTBALL YARD LINE NUMBERS
N.T.S.

5 FOOTBALL TEAM BOX/COACHES AREA DETAIL
N.T.S.

6 SOCCER CORNER KICK DETAIL
N.T.S.

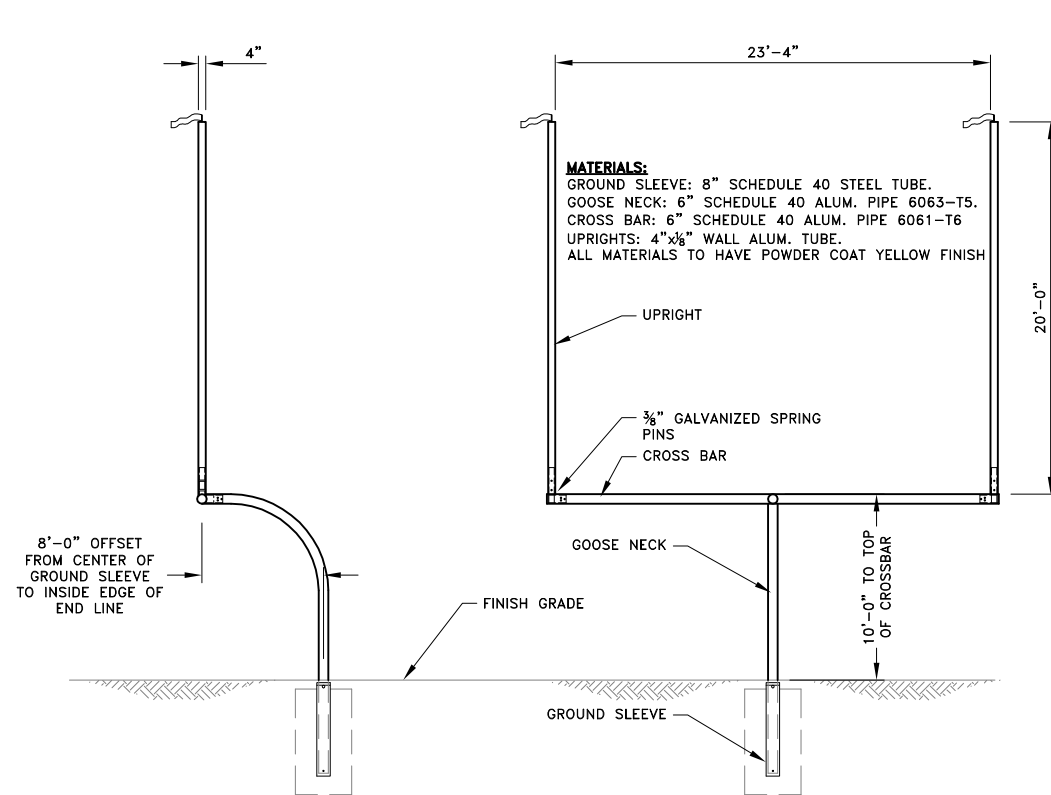
DESIGN JMP
DRAWN MLL
CHECK JMP/MAJ
APPROVED JMP
FILE:

| | | | | |
|-----|------|----------|----|--------|
| No. | DATE | REVISION | BY | APRVD. |
|-----|------|----------|----|--------|

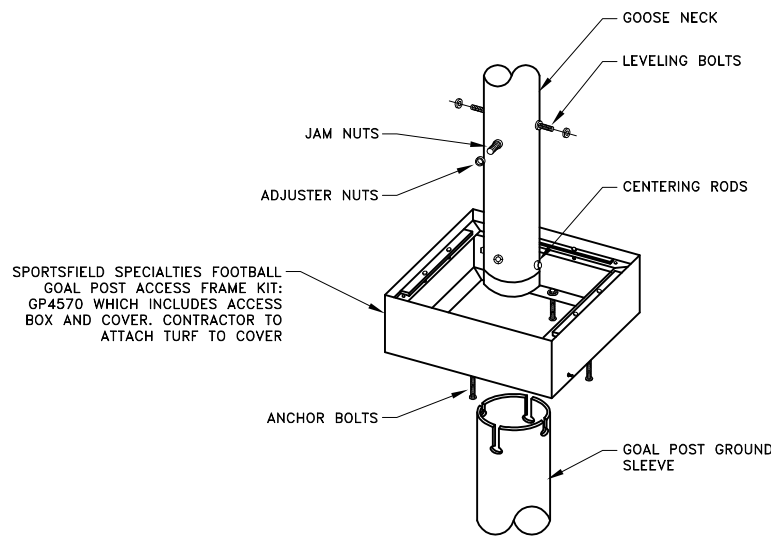
TURF FIELD MARKING DETAILS



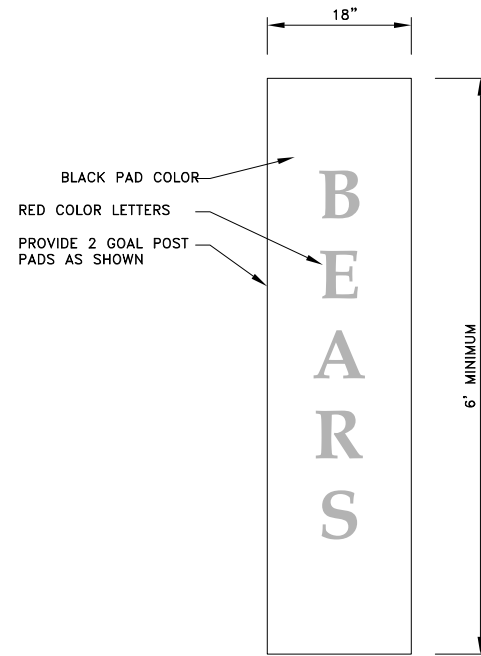
ADAIR-KENNEDY FOOTBALL/SOCCER
FIELD SYNTHETIC TURF REPLACEMENT
CBJ CONTRACT No. E12-189
CITY & BOROUGH OF JUNEAU, ALASKA



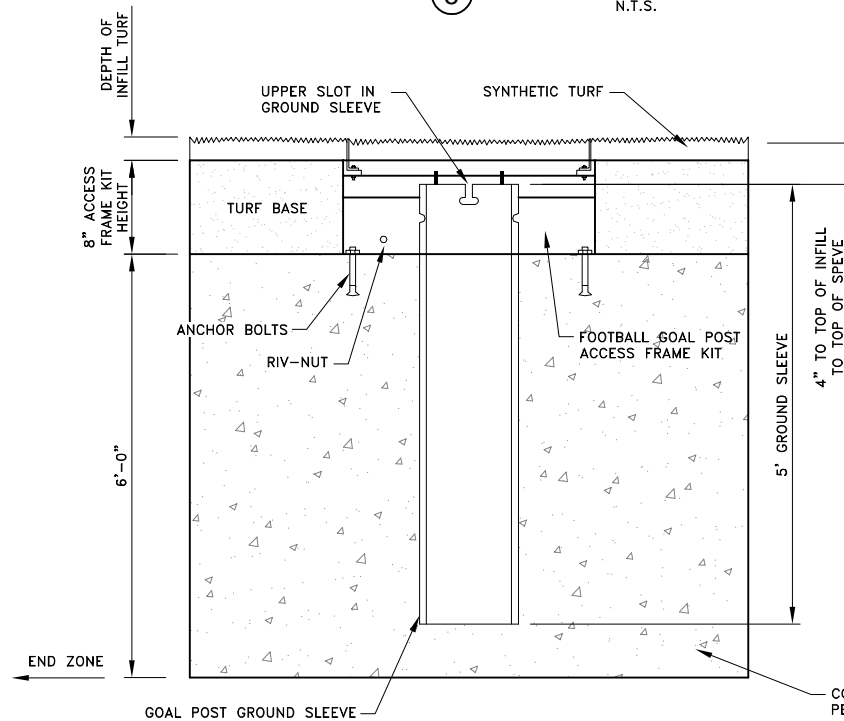
1 8-FOOT OFFSET FOOTBALL GOAL DETAIL
N.T.S.



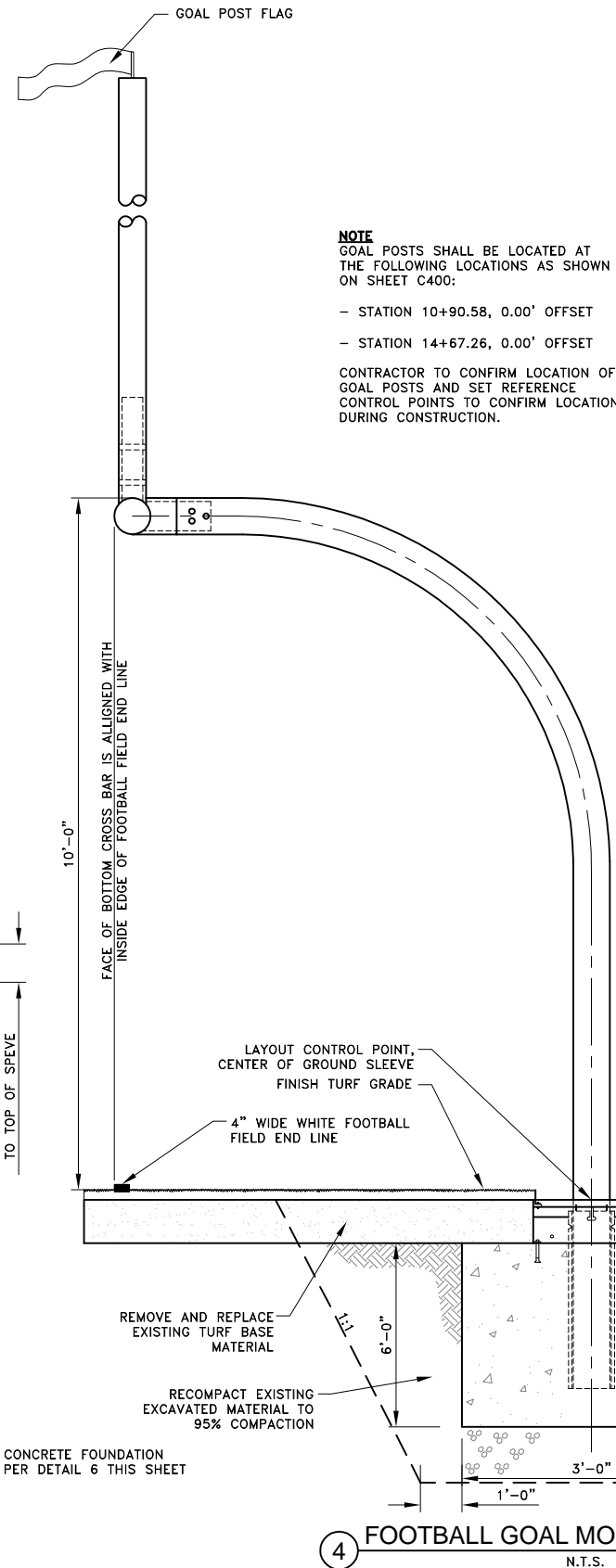
2 FOOTBALL GOAL MOUNTING DETAIL
N.T.S.



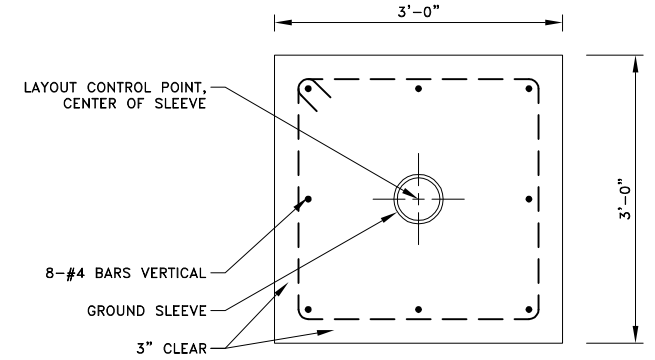
5 GOALPOST PAD DETAIL
N.T.S.



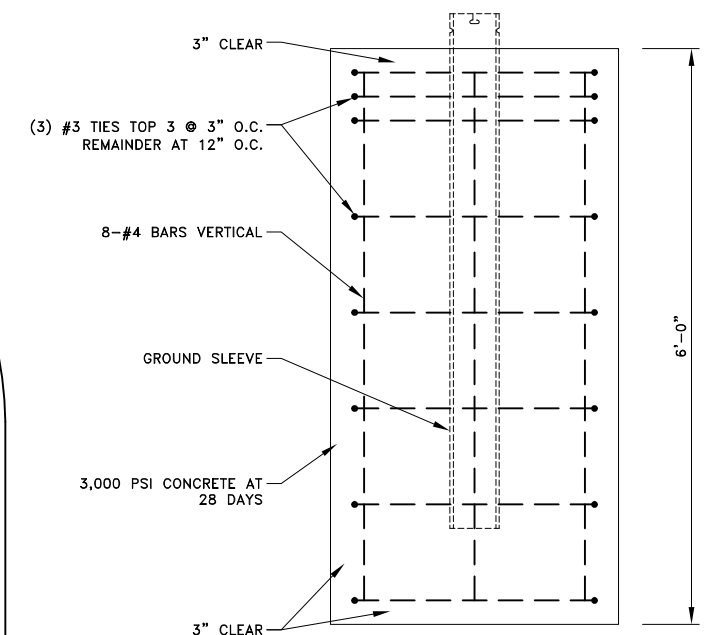
3 FOOTBALL GOAL MOUNTING DETAIL
N.T.S.



4 FOOTBALL GOAL MOUNTING DETAIL
N.T.S.

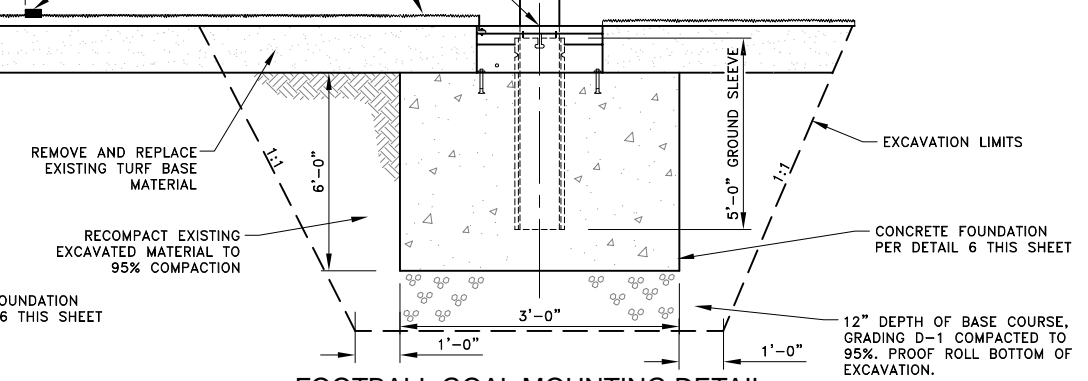


PLAN VIEW



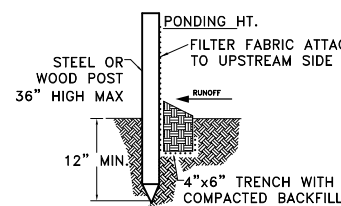
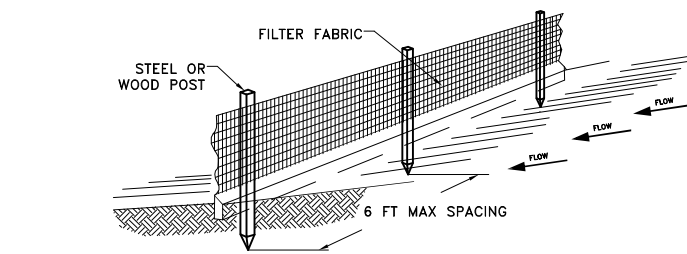
ELEVATION

6 GOALPOST FOUNDATION DETAIL
N.T.S.

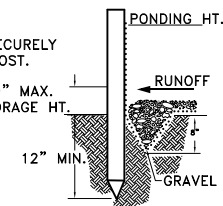


EROSION & SEDIMENT CONTROL NOTES

1. EROSION AND SEDIMENT CONTROL DETAILS SHOWN ARE INTENDED AS A MINIMUM LEVEL OF EROSION CONTROL ONLY. ALL SEDIMENTATION FROM ON SITE GRADING AND DRAINAGE SHALL BE CONTAINED ON SITE.
2. ALL EROSION AND SEDIMENT CONTROL BARRIERS SHALL BE IN PLACE PRIOR TO COMMENCING ANY CONSTRUCTION OPERATIONS.
3. EROSION CONTROL DEVICES SHALL NOT BE REMOVED UNTIL NO EROSION OR SEDIMENT PROBLEMS EXIST OR AS DIRECTED BY THE ENGINEER.
4. COLLECTED SEDIMENT WILL BE DISPOSED OF OFF SITE AT AN APPROVED DUMPSITE. COLLECTED SEDIMENT MAY NOT BE USED AS EMBANKMENT OR BACKFILL.
5. CONTRACTOR SHALL KEEP CLEAN AND DISPOSE OF ALL EARTHEN MATERIAL TRACKED ONTO FLOYD DRYDEN ACCESS ROAD AND MENDENHALL LOOP ROAD. THIS SHALL INCLUDE SWEEPING WITH A POWER BROOM, VACUUMING AND/OR WATERING ON A DAILY BASIS DURING HAULING ACTIVITIES OR MORE FREQUENTLY AS DIRECTED BY THE ENGINEER.



STANDARD DETAIL
TRENCH WITH NATIVE BACKFILL



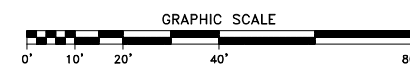
ALTERNATE DETAIL
TRENCH WITH GRAVEL

NOTE:

1. INSPECT AND REPAIR FENCE AFTER EACH STORM EVENT AND REMOVE SEDIMENT WHEN NECESSARY.
2. REMOVED SEDIMENT SHALL BE DEPOSITED TO AN AREA THAT WILL NOT CONTRIBUTE SEDIMENT OFF-SITE AND CAN BE PERMANENTLY STABILIZED.
3. SILT FENCE SHALL BE PLACED ON SLOPE CONTOURS TO MAXIMIZE PONDING EFFICIENCY.

1 SILT FENCE DETAIL
N.T.S.

EROSION AND SEDIMENT CONTROL PLAN



R & M ENGINEERING, INC.
ENGINEERS GEOLOGISTS SURVEYORS
6205 GLACIER HIGHWAY Phone 907-780-6060
JUNEAU, AK. 99801 Fax 907-780-4611
www.rmjuneau.com

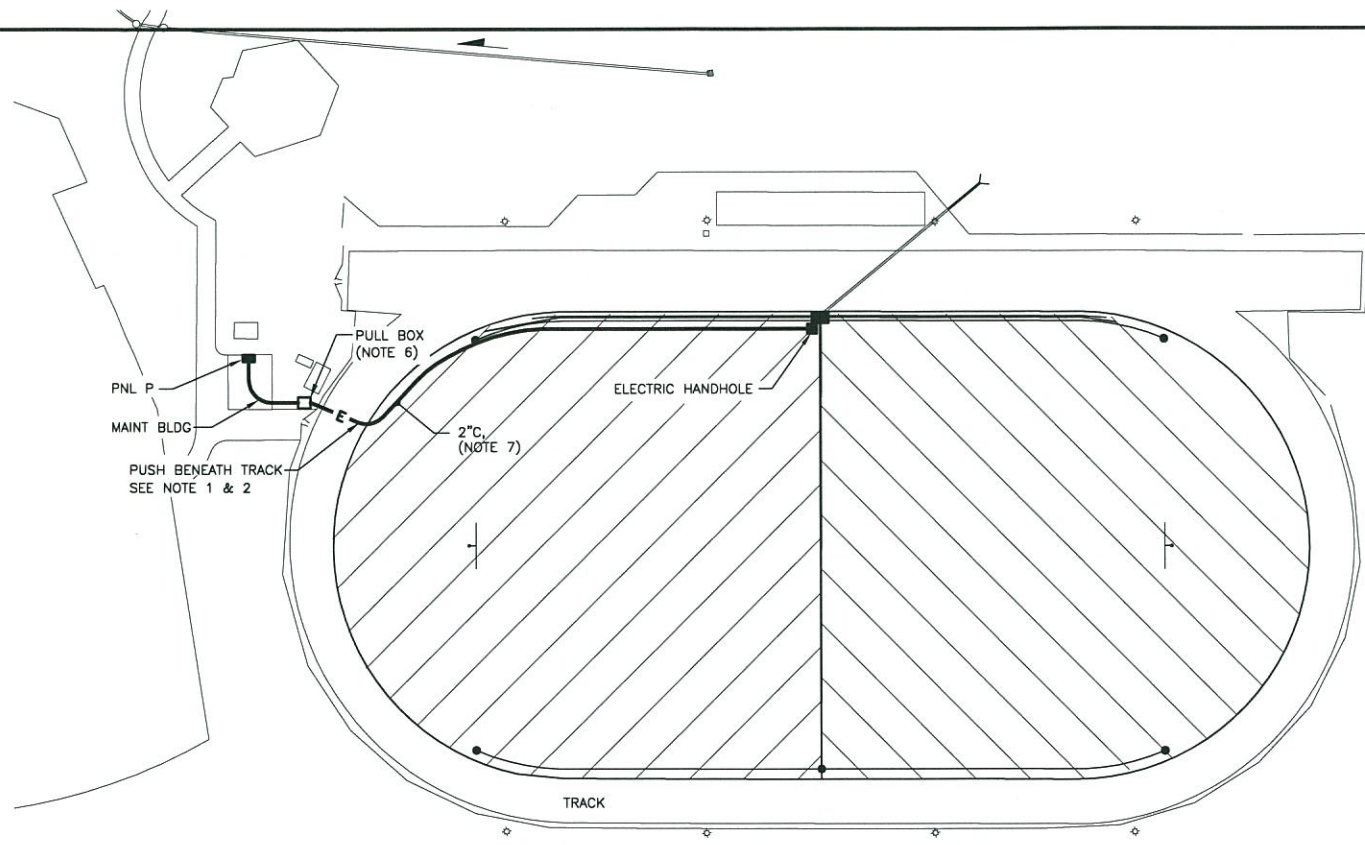
ADAIR-KENNEDY FOOTBALL/SOCCER
FIELD SYNTHETIC TURF REPLACEMENT
CBJ CONTRACT No. E12-189
CITY & BOROUGH OF JUNEAU, ALASKA

DATE: FEB. 21, 2012
R & M No. 111405

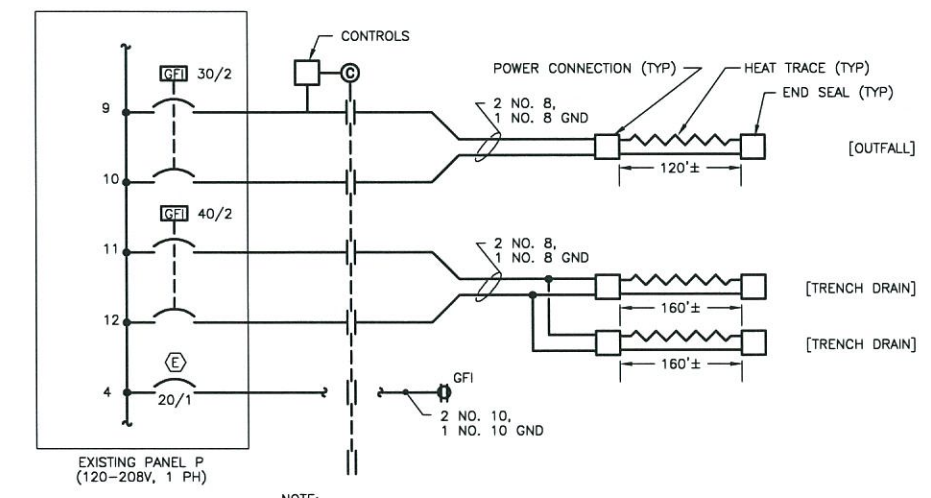
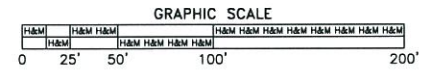
SHEET **C700**

DESIGN JMP
DRAWN MLL
CHECK JMP/MAJ
APPROVED JMP
FILE:

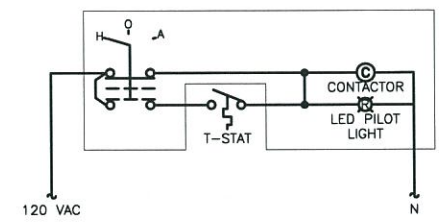
| No. | DATE | REVISION | BY | APRVD. |
|-----|------|----------|----|--------|
| | | | | |



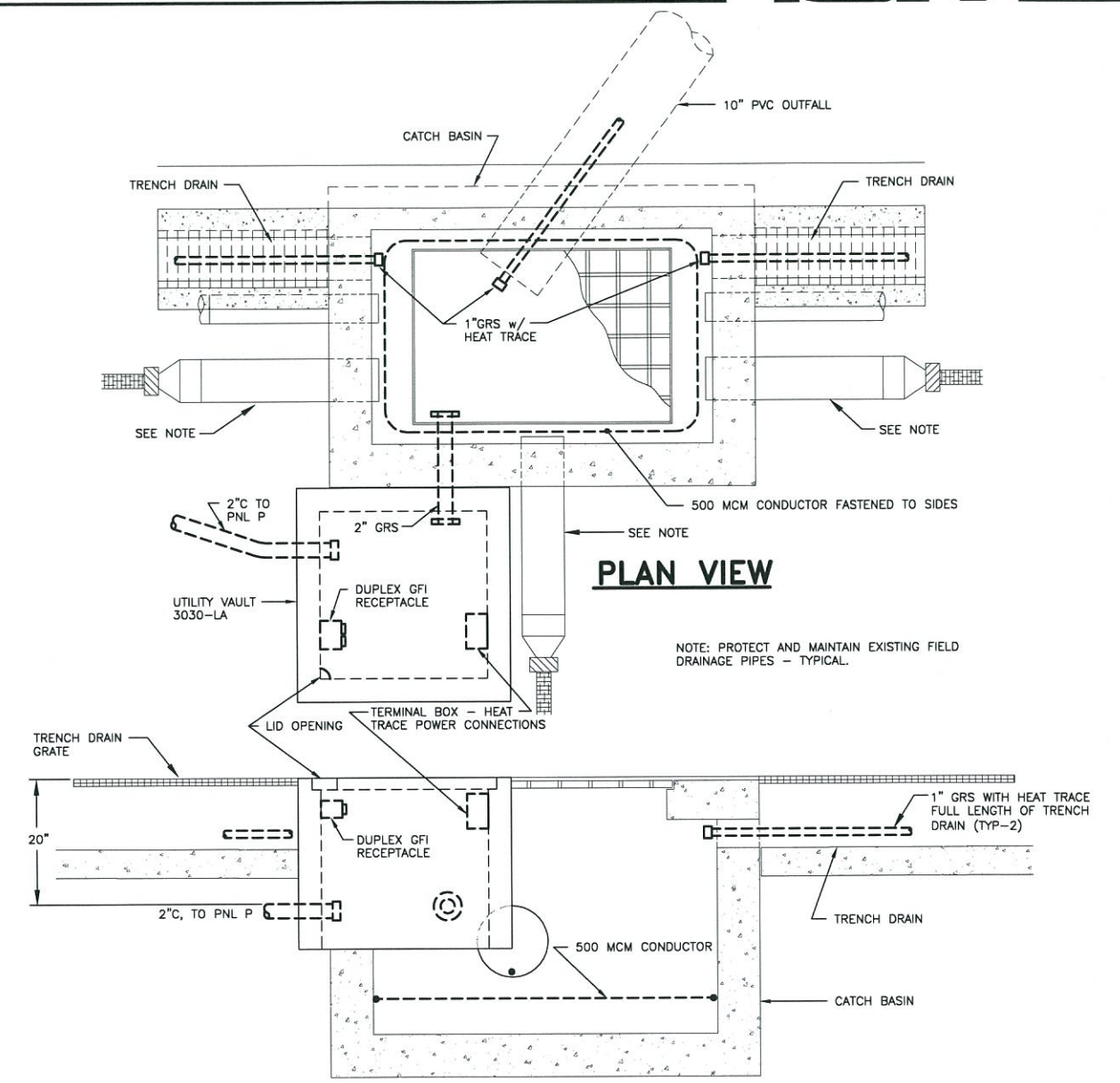
PLAN VIEW
SCALE: 1" = 50'-0"



PARTIAL LINE DIAGRAM - HEAT TRACE POWER
NO SCALE



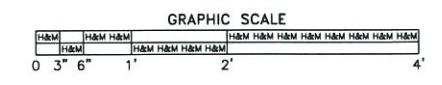
SCHEMATIC - HEAT TRACE CONTROL
NO SCALE



PLAN VIEW

SECTION

DETAILS - HEAT TRACE HANDHOLE
SCALE: 1" = 1'-0"



- NOTES:
1. PROVIDE 2" GRS MINIMUM BENEATH TRACK. EXTEND AT LEAST FIVE FEET BEYOND EDGE OF TRACK ON EACH SIDE.
 2. CONDUIT MAY BE INSTALLED INSIDE A LARGER GALVANIZED RIGID PIPE. IF A LARGER PIPE IS USED, THE 2" CONDUIT MAY BE PVC. THE CONDUIT/PIPE DEPTH SHALL BE 36 INCHES MINIMUM.
 3. CONTRACTOR RESPONSIBLE FOR THE CONDITION OF THE TRACK AFTER THE PIPE/CONDUIT IS INSTALLED BENEATH. REPAIR/REPLACE ALL DAMAGE OR SURFACE IRREGULARITIES RESULTING FROM THE INSTALLATION.
 4. TRENCHES AND DISTURBED AREAS FOR THE HEAT TRACE SYSTEM SHALL BE BACKFILLED WITH TURF BASE ROCK.
 5. FIELD LOCATE EXISTING UTILITIES PRIOR TO BEGINNING CONSTRUCTION.
 6. TYPE 1A, MINIMUM WITH EXTENSIONS NECESSARY TO EXTEND BOTTOM TO 42" INVERT ELEVATION.
 7. BURY AT LEAST 20" INVERT ELEVATION. MAINTAIN A DISTANCE OF 3 TO 4 FEET FROM TRACK CURB AND TRENCH.

F:\Projects\128 R & M\25 Adair Kennedy Field Heat Trace\Drawings\Working\E100.dwg PLOT: February 22, 2012 dt: 9:24am

| | | | | | |
|----------|------|----------|----|--------|--|
| DESIGN | BCH | | | | |
| DRAWN | REJ | | | | |
| CHECK | BCH | | | | |
| APPROVED | BCH | | | | |
| FILE: | | | | | |
| No. | DATE | REVISION | BY | APRVD. | |

**HEAT TRACE SYSTEM
ADDITIVE ALTERNATE NO. 1**



HAIGHT & ASSOCIATES
CONSULTING ELECTRICAL ENGINEERS
526 Main Street, Juneau, AK 99801
(907) 586-9788

**ADAIR-KENNEDY FOOTBALL/SOCCER
FIELD SYNTHETIC TURF REPLACEMENT**
CBJ CONTRACT No. E12-189
CITY & BOROUGH OF JUNEAU, ALASKA

| | |
|-----------|---------------|
| DATE: | FEB. 22, 2012 |
| R & M No. | 111405 |
| SHEET | E100 |