



ADDENDUM TO THE CONTRACT

for the

Bartlett Regional Hospital Server Room Cooling System Replacement

Contract No. E12-149

ADDENDUM NO.: ONE

CURRENT DEADLINE FOR BIDS:
January 20, 2012

PREVIOUS ADDENDA: NONE

ISSUED BY: City and Borough of Juneau
ENGINEERING DEPARTMENT
155 South Seward Street
Juneau, Alaska 99801

DATE ADDENDUM ISSUED: December 28, 2011

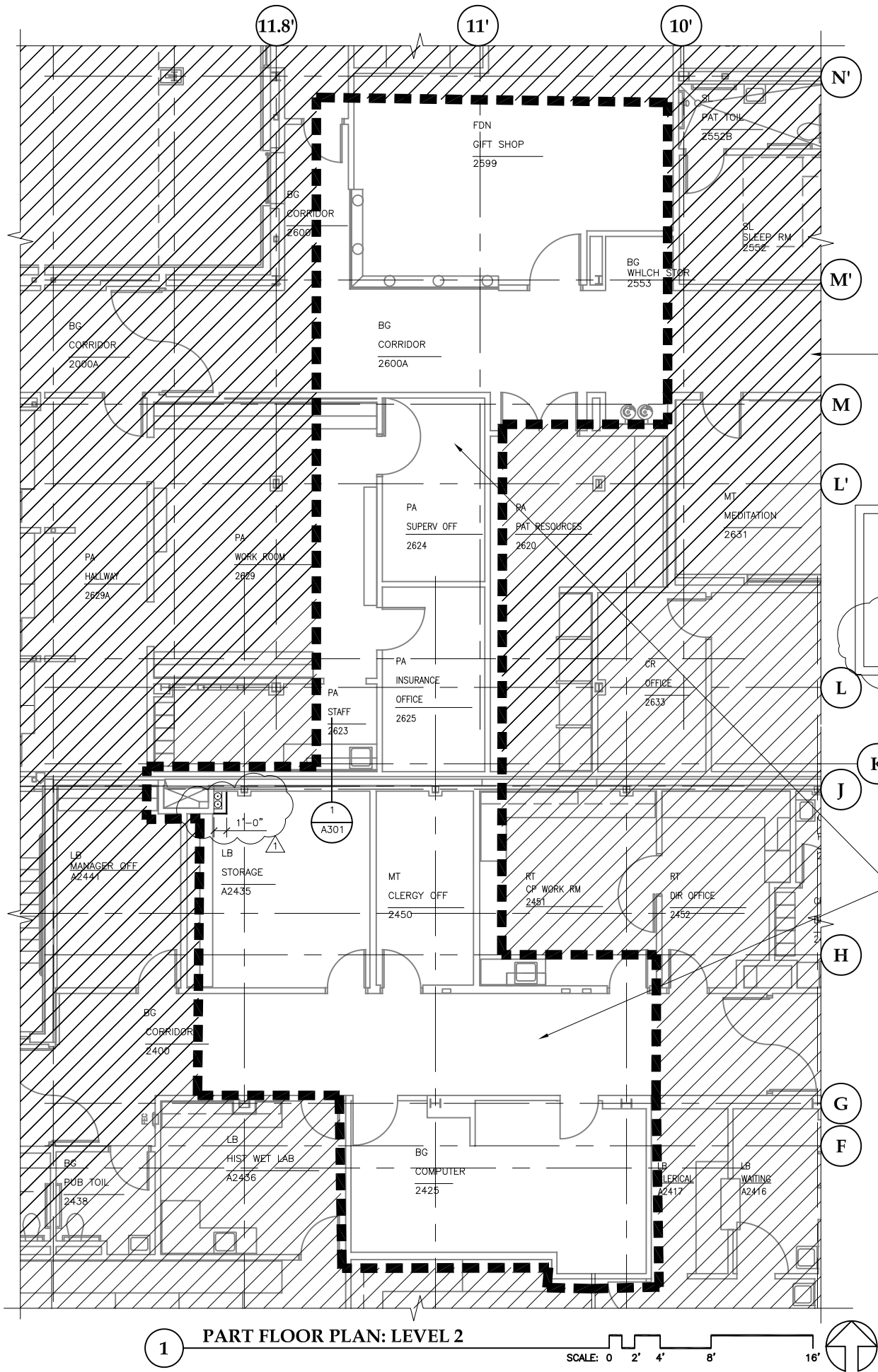
The following items of the contract are modified as herein indicated. All other items remain the same. This is a faxed addendum. A confirming copy will not be mailed to you. If this fax is incomplete, please call (907) 586-0490, and we will re-send it. This addendum has been issued and is posted online. Please refer to the CBJ Engineering Contracts Division webpage at:
<http://www.juneau.org/engineeringftp/contracts/Contracts.php>

DRAWINGS:

- Item No. 1 Sheet A201 – Partial Floor & Reflected Ceiling Plans Level 2. **Delete** in its entirety and **replace** with the attached Sheet A201, labeled Addendum No. 1
- Item No. 2 Sheet M201 – Partial Floor Plan Level 2 Piping. **Delete** in its entirety and **replace** with the attached Sheet M201, labeled Addendum No. 1.

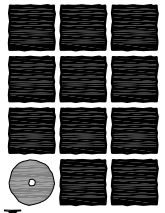
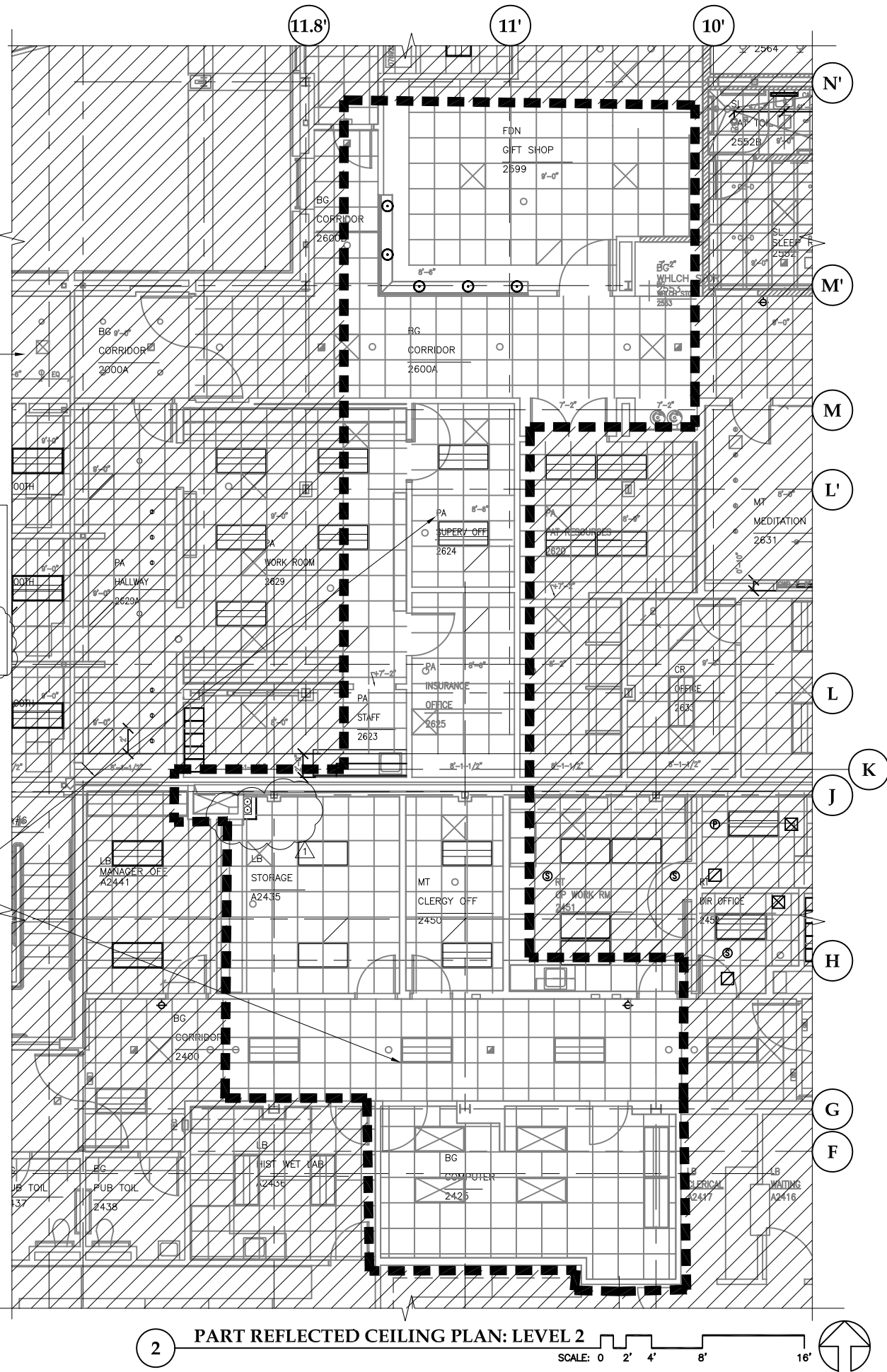
By: _____
Jennifer Mannix,
Contract Administrator

Date: 12-28-11



NOTE:
SEE SHEET A102 FOR RATED ASSEMBLIES TO BE PENETRATED.
SEE MECHANICAL AND ELECTRICAL FOR WORK THIS AREA.
WET COLUMN/PIPE CHASE; FURRED PARTITION W/ PT GWB ON MTL STUDS, TO 12" ABOVE FINISHED CLG; MATCH EX BASE & FINISHES; CUT & PATCH EX CLG AS REQ; SEE MECH M201.

CUT & PATCH; WALL & CEILING FOR; MECH & ELEC WORK



**Jensen
Yorba
Lott
Inc.**

522 West 10th Street
Juneau, Alaska 99801
phone 907-586-1070
fax 907-586-3959
jensenyorbalott.com



**City & Borough of Juneau
Bartlett Regional Hospital
Server Room Cooling System Replacement
CBJ Contract No. E12-149
Juneau, Alaska**

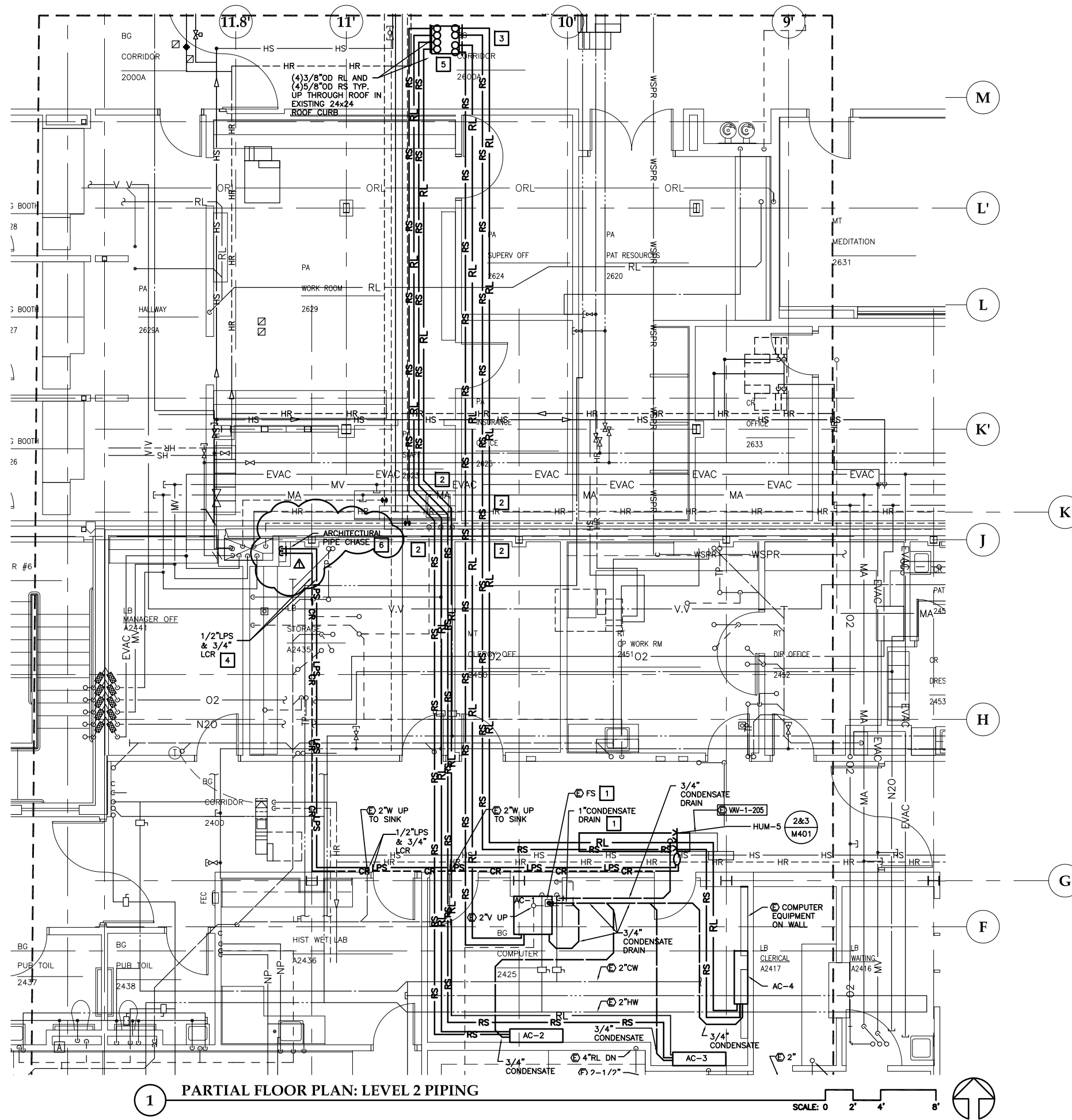
CONSTRUCTION DOCUMENTS

REVISIONS

1	12/27/2011 ADD #1
---	-------------------

SHEET TITLE
**PARTIAL FLOOR
& REFLECTED
CEILING PLANS
LEVEL 2**
DATE: December 1, 2011
FILE: 0859_Phase 55

A201



1 PARTIAL FLOOR PLAN: LEVEL 2 PIPING

CONSTRUCTION NOTES:

1. INSTALL 3" FUNNEL DRAIN ATTACHMENT TO EXISTING 3" SS DRAIN. CONDENSATE PIPING TO TERMINATE AT FUNNEL DRAIN. VERIFY EXISTING CONDITIONS ON SITE PRIOR TO START OF WORK.
2. PROVIDE PENETRATION FOR RL AND RS PIPING THROUGH DOUBLE CONCRETE WALL AT THIS LOCATION. COORDINATE CUTTING AND PATCHING FOR CONCRETE WALL WITH GENERAL CONTRACTOR. SEAL ALL PENETRATIONS THROUGH DOUBLE CONCRETE WALL AIR TIGHT. SEE SECTION DETAIL ON SHEET A301 FOR ROUTING OF RL AND RS PIPING AND PENETRATION TO DOUBLE CONCRETE WALL BETWEEN GRID LINES J & K. COORDINATE WORK.
3. PROVIDE PENETRATION UP THROUGH ROOF. SEE ARCHITECTURAL DETAIL 1 ON M401 AND ARCHITECTURAL PLANS FOR ROOF CURB AND PENETRATION DETAIL. SEAL PIPING PENETRATIONS WITH FIRESTOPPING AND STUFFING.
4. CONNECT TO 1/2" LPS AND 3/4" LCR AT LPS AT HX AND CONDENSATE RETURN PUMP IN WELL ROOM BEHIND MAINTENANCE SHOP ON THE FIRST FLOOR. COORDINATE ARCHITECTURAL PIPE CHASE WITH GENERAL CONTRACTOR. ROUTE PIPING TO CEILING SPACE OF 2ND LEVEL. PROVIDE PRESSURE REDUCING VALVE, PRESSURE GAGES, AND ISOLATION VALVES AS REQUIRED FOR OPERATIONAL SYSTEM. SEE INSTALLATION DETAILS #2, 3, AND 4 ON SHEET M401.
5. EXISTING PENETRATION AND ROOF CAP INSTALLED UNDER ROOF PROJECT CBJ CONTRACT NO. E11-286. VERIFY AS BUILT CONDITIONS ON SITE PRIOR TO START OF WORK.
6. COORDINATE WITH ARCHITECTURAL FOR PIPING CHASE TO CONCEAL PIPING TO BE BUILT AT LOCATION SHOWN UNDER GENERAL WORK.

Jensen Yorba Lott Inc.
522 West 10th Street
Juneau, Alaska 99801
phone 907-586-1070
fax 907-586-3959
jensenyorbalott.com

Murray & Associates, P.C.
P.O. BOX 21081
Juneau, Alaska 99802
phone 907-780-6151
fax 907-780-6182
www.murraypc.com



City & Borough of Juneau
Bartlett Regional Hospital
Server Room Cooling System Replacement
CBJ Contract No. E12-149
Juneau, Alaska

CONSTRUCTION DOCUMENTS	
REVISIONS	
1	12/27/2011
2	
3	
SHEET TITLE	
PARTIAL FLOOR PLAN LEVEL2 PIPING	
DATE: December 1, 2011	
FILE:	

M201