

PARTS LIST

REF. NO.	DESCRIPTION	NUMBER REQUIRED											PART NUMBER
		26107	26108	26109	26111	26112	26113	26114	26115	26116	26117	26118	
1	Rockscape Vert Rock	1	0	0	0	0	0	0	0	0	0	0	179352
2	Rockscape Arch Rock	0	1	0	0	0	0	0	0	0	0	0	179353
3	Rock Step	0	0	1	0	0	1	0	0	0	0	1	179398
4	Single Rock Upright	0	0	0	1	0	0	0	0	0	0	0	GR1984
5	Double Rock Upright	0	0	0	0	1	0	0	0	0	0	0	GR1983
6	Sgl Rock Upr. Attach w/ Rockstep	0	0	0	0	0	1	0	0	0	0	0	179646
7	Dbl Rock Upr. Dual Attach	0	0	0	0	0	0	1	0	0	0	0	179660
8	Dbl Rock Upr. 90 Attach	0	0	0	0	0	0	0	1	0	0	0	179651
9	Sgl Rock Upr. 90 Attach	0	0	0	0	0	0	0	0	1	0	0	179653
10	Sgl Rock Upr. 90 Attach (Rev.)	0	0	0	0	0	0	0	0	0	1	0	179655
11	Sgl Rock Upr Dual Attach w/Rockst.	0	0	0	0	0	0	0	0	0	0	1	179663
12	Footbuck Ass'y	2	2	0	0	0	0	0	0	0	0	0	179688
13	Rock Step Footbuck	0	0	1	0	0	1	0	0	0	0	1	179684
	Hardware Complete	1	0	0	0	0	0	0	0	0	0	0	179656
	Hardware Complete	0	1	0	0	0	0	0	0	0	0	0	179657
	Hardware Complete	0	0	1	0	0	1	0	0	0	0	1	179658
	3/8" x 1" P.B.H.C.S. w/Patch	4	4	3	0	0	3	0	0	0	0	3	812050*
	3/8" x 1 1/4" P.B.H.C.S. w/Patch	0	0	2	0	0	2	0	0	0	0	2	812051*
	3/8" x 2 1/4" P.B.H.C.S. w/Patch	8	4	0	0	0	0	0	0	0	0	0	812056*
	3/8" Lockwasher	12	8	5	0	0	5	0	0	0	0	5	817334*
	3/8" Flatwasher	4	4	3	0	0	3	0	0	0	0	3	817410*
	3/8" Flatwasher (1 1/4" O.D.)	8	4	2	0	0	2	0	0	0	0	2	817424*

** Included in Hardware*

Unless Otherwise Specified, All Units of Measure are Each

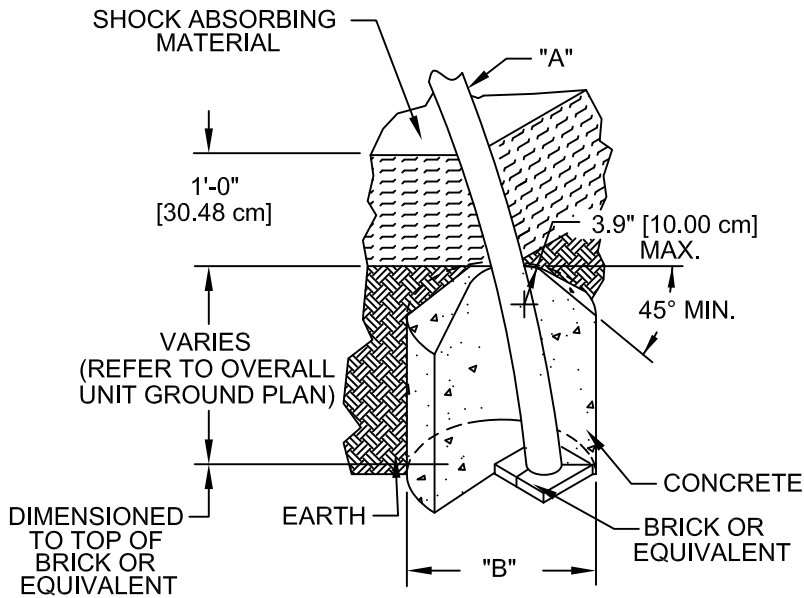
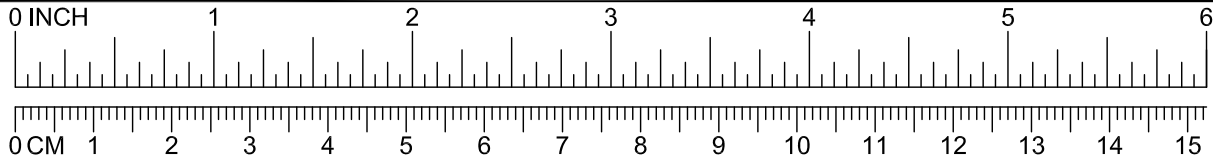
**Warning: During Installation, Hardware And Small Parts Are Choking Hazards
For Young Children. Store Unused Parts Appropriately Until Assembly Is Completed.
Once Assembly Is Completed, Remove Any Unused Parts From The Play Environment
And Dispose/Save Them In A Secure Location.**

DETAILS -for- 26107, 26108, 26109, & 26111-26118

IMPORTANT

TO REDUCE THE RISK OF CLOTHING ENTANGLEMENT IN COMPLIANCE WITH ASTM F1487, ANY BOLT END PROTRUDING MORE THAN TWO FULL THREADS BEYOND THE FACE OF THE NUT SHALL BE CUT-OFF FLUSH, FILED SMOOTH AND TREATED TO PREVENT CORROSION.

NOTE: AFTER ASSEMBLY IS COMPLETE, PEEN TEE-NUTS AND FLATWASHERS TO MATCH RADIUS OF PIPE.



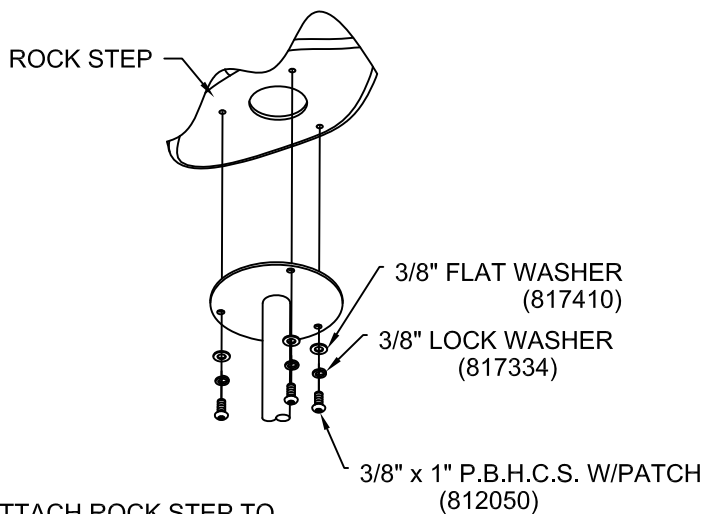
DIA. "A" (PIPE SIZE)	DIA. "B" (FOOTING SIZE)
1 7/8" [4.83 cm]	1'-2" [35.56 cm]
3 1/2" [8.89 cm]	1'-6" [45.72 cm]
SWINGS	
3 1/2" [8.89 cm]	2'-0" [60.96 cm]

NOTES:

- SLOPED FOOTING IS A REQUIREMENT OF EUROPEAN STANDARD EN1176-1
- SUGGESTED MINIMUM CONCRETE RATING: 3000 PSI

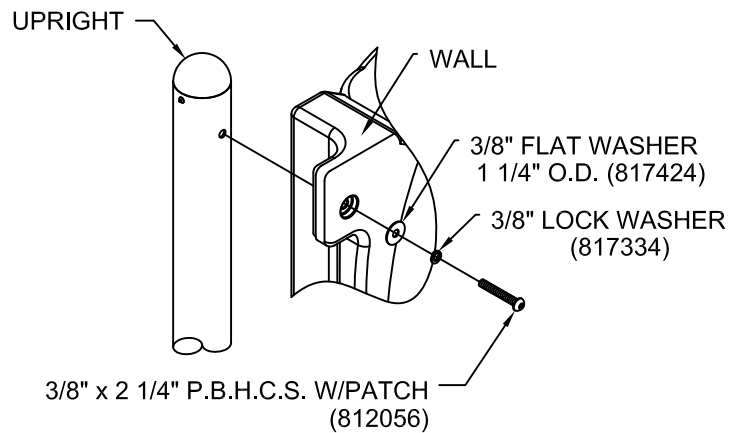
003

SHOCK ABSORBING PROPERTIES OF SURFACING MATERIALS VARY. IF YOU DETERMINE THAT LESS THAN 1'-0" [30.48cm] OF SURFACING IS REQUIRED, MAKE UP THE DIFFERENCE IN ELEVATION WITH EARTH, BEFORE APPLYING SURFACING.



ATTACH ROCK STEP TO UPRIGHT BEFORE ATTACHING FOOTBUCK

075



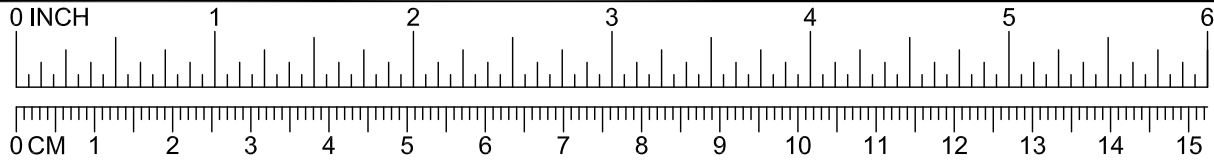
076

DETAILS -for- 26107, 26108, 26109, & 26111-26118

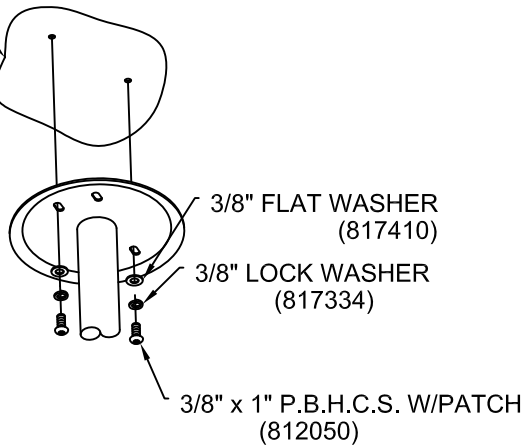
IMPORTANT

To Reduce the Risk of Clothing Entanglement in Compliance with ASTM F1487, Any Bolt End Protruding More Than Two Full Threads Beyond the Face of the Nut Shall Be Cut-Off Flush, Filed Smooth and Treated to Prevent Corrosion.

NOTE: After Assembly is Complete, Peen Tee-Nuts and Flatwashers to Match Radius of Pipe.

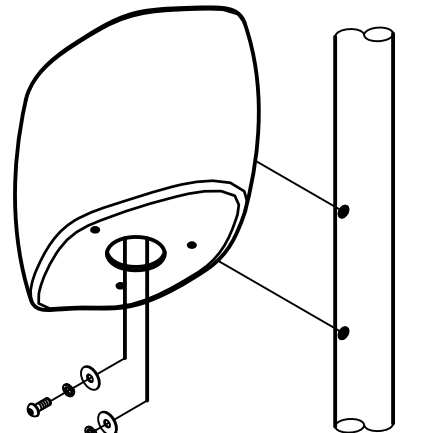


ROCKSCAPE
WALL



077

ATTACH ROCK STEP TO
UPRIGHT BEFORE
ATTACHING FOOTBUCK



NOTE: DRILL THRU DRILL POINTS
USING A 1/2" DIA. BIT (2 PLACES)

078

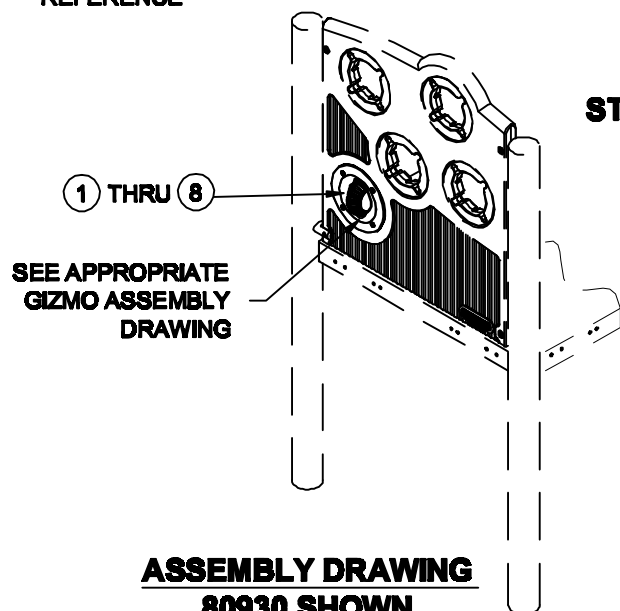


Enriching Childhood Through Play -
1-800-235-2440

4839 GIZMO ASSEMBLIES

ISSUED/REVISED: 12/13/06

-  = INSTALLATION
DETAIL
 = PARTS LIST
REFERENCE



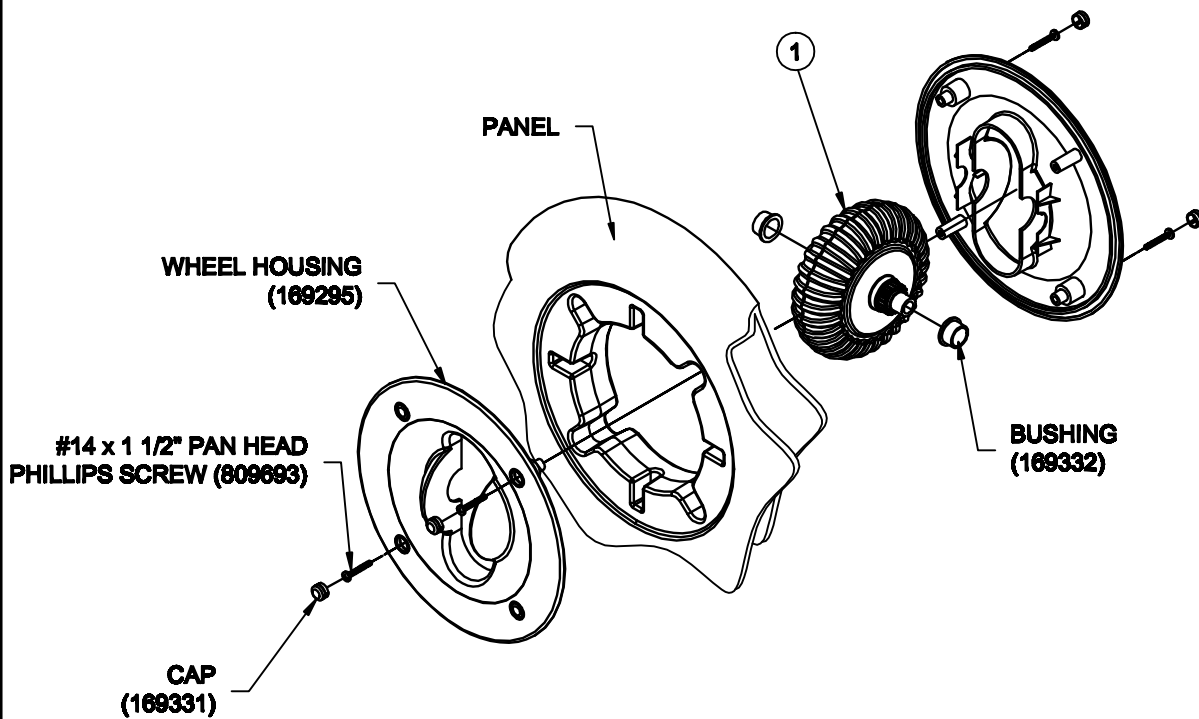
CLICK WHEEL ASS'Y	4839
ANSWER WHEEL ASS'Y	4840
MAZE WHEEL ASS'Y	4841
ECHO CHAMBER ASS'Y	4842
FLAT MIRROR ASSEMBLY	4843
STAINED GLASS ASSEMBLY - RED	4845
STAINED GLASS ASSEMBLY -YELLOW	4846
HYPNO WHEEL ASSEMBLY	4847

PARTS LIST

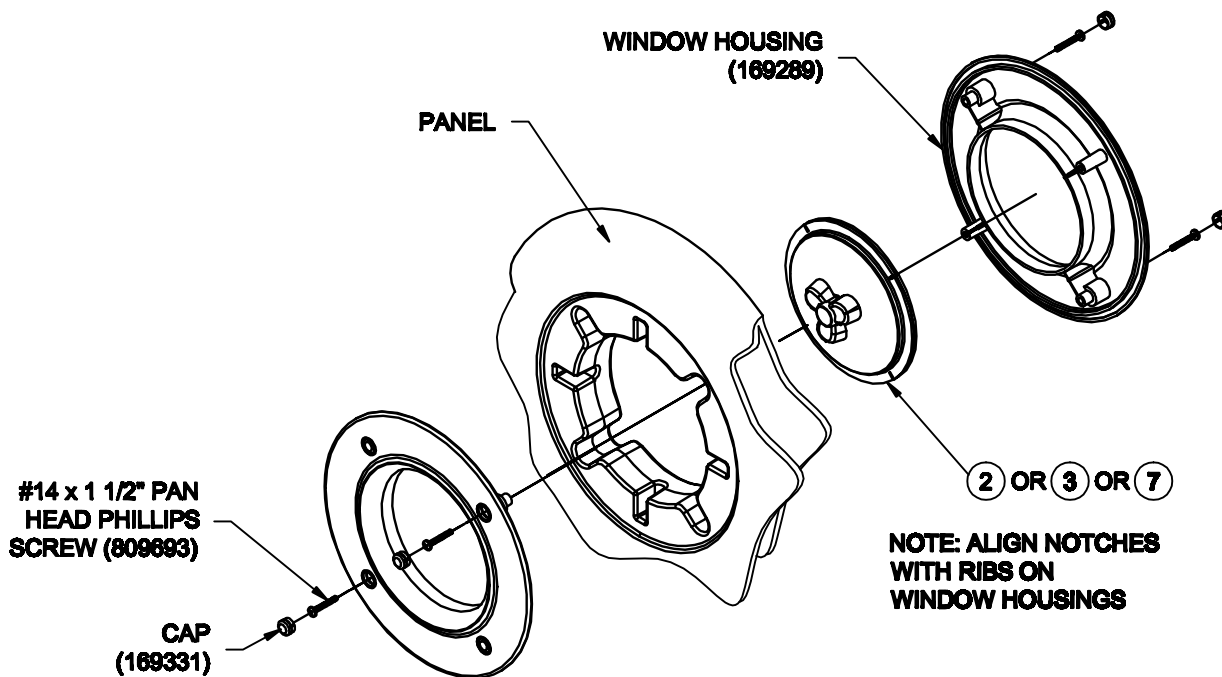
REF NO.	DESCRIPTION	NO. REQ'D								PART NUMBER
		4839	4840	4841	4842	4843	4845	4846	4847	
1	Click Wheel Ass'y	1	0	0	0	0	0	0	0	169693
2	Answer Wheel Ass'y	0	1	0	0	0	0	0	0	169694
3	Maze Wheel Ass'y	0	0	1	0	0	0	0	0	169695
4	Echo Chamber Ass'y	0	0	0	1	0	0	0	0	169696
5	Flat Mirror Ass'y	0	0	0	0	1	0	0	0	169299
6	Stained Glass Ass'y-Red	0	0	0	0	0	1	0	0	169697
7	Stained Glass Ass'y-Yellow	0	0	0	0	0	0	1	0	169297
8	Hypno Wheel Ass'y	0	0	0	0	0	0	0	1	177742
	Wheel Housing	2	0	0	0	0	0	0	0	169295**
	Window Housing	0	2	2	2	2	2	2	2	169289**
	Cap	4	4	4	4	4	4	4	4	169331**
	Bushing	2	0	0	0	0	0	0	0	169332**
	#14 x 1-1/2" Screw	4	4	4	4	4	4	4	4	809693**

Unless Otherwise Specified, All Units of Measure are Each
** Included in Assembly

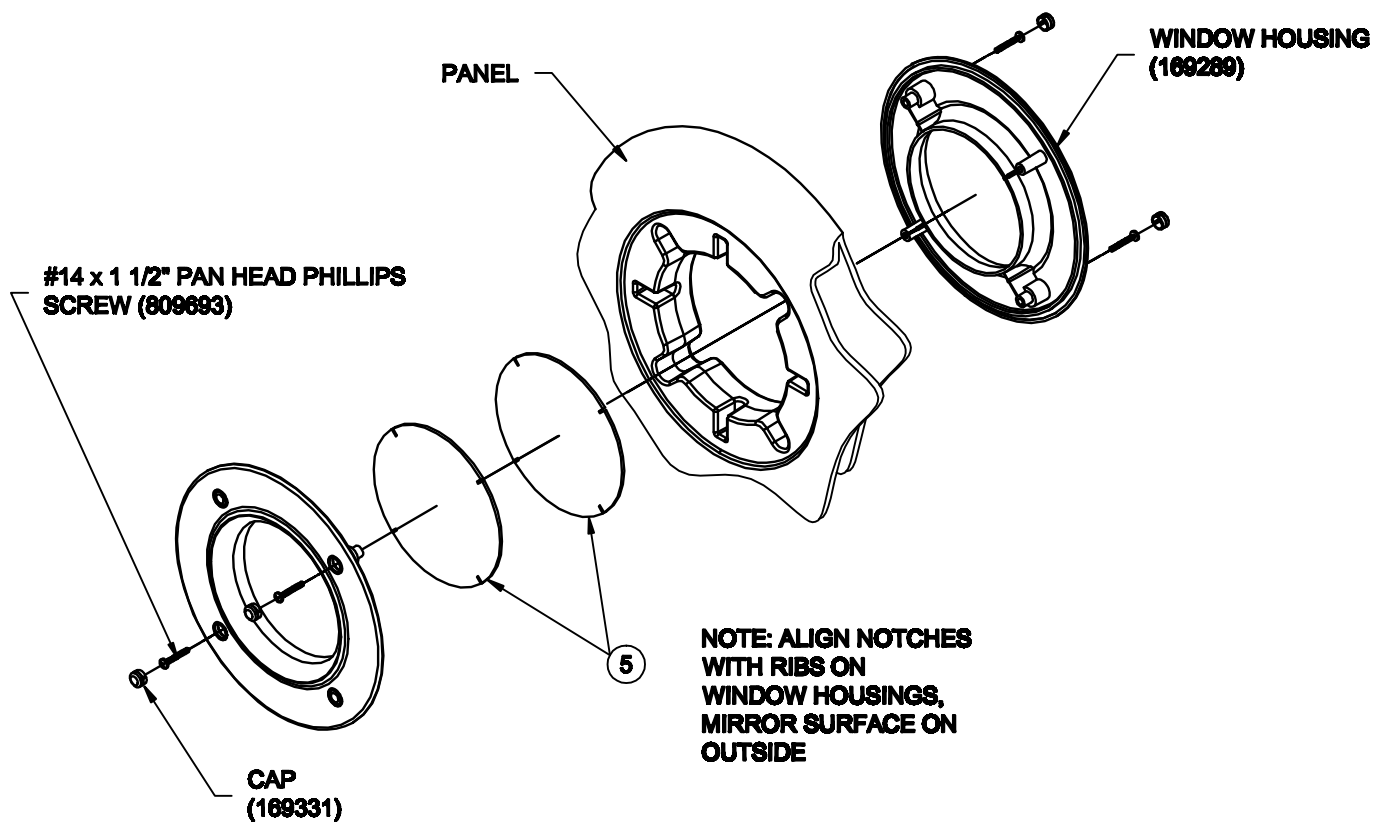
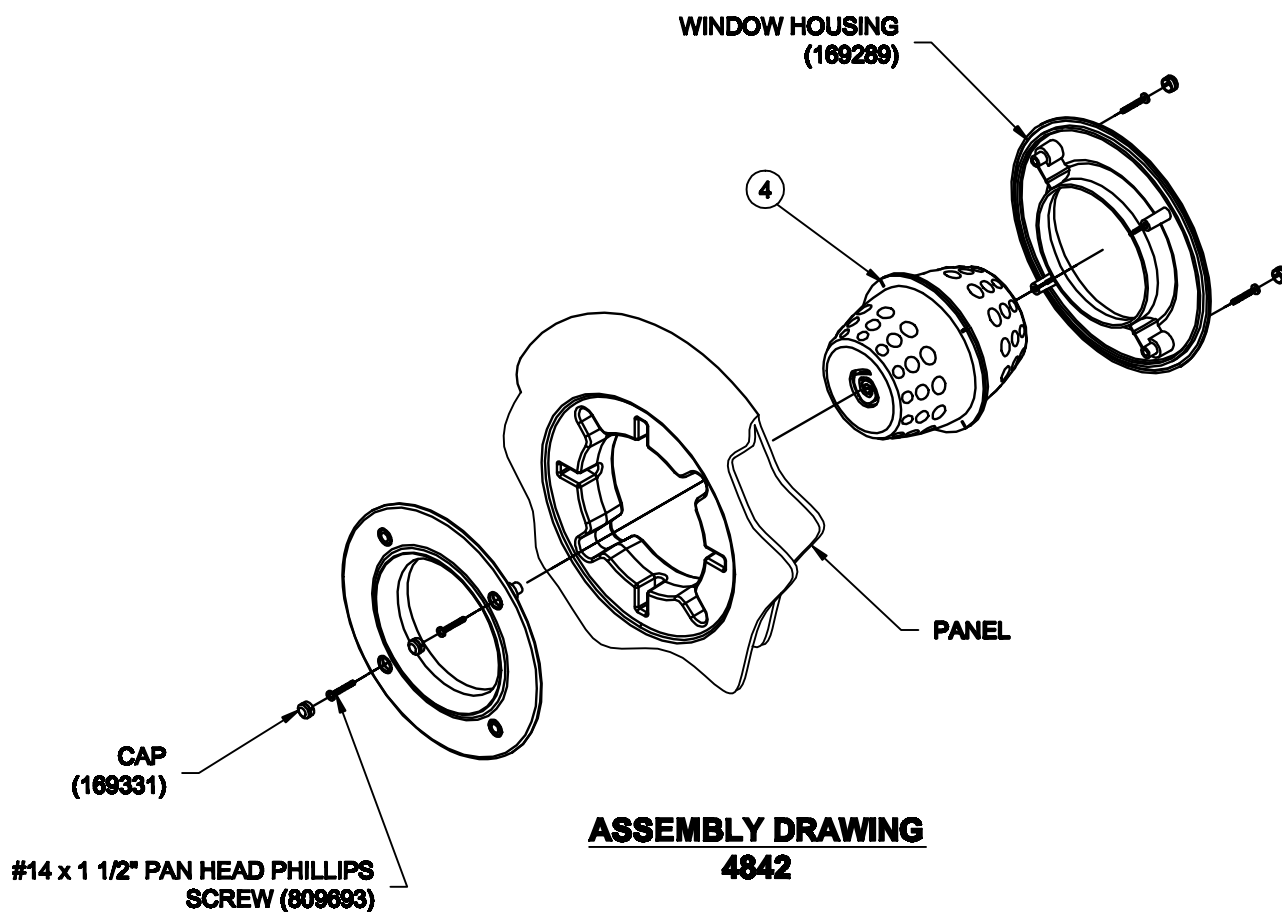
Warning: During Installation, Hardware And Small Parts Are Choking Hazards For Young Children. Store Unused Parts Appropriately Until Assembly Is Completed. Once Assembly Is Completed, Remove Any Unused Parts From The Play Environment And Dispose/Save Them In A Secure Location.

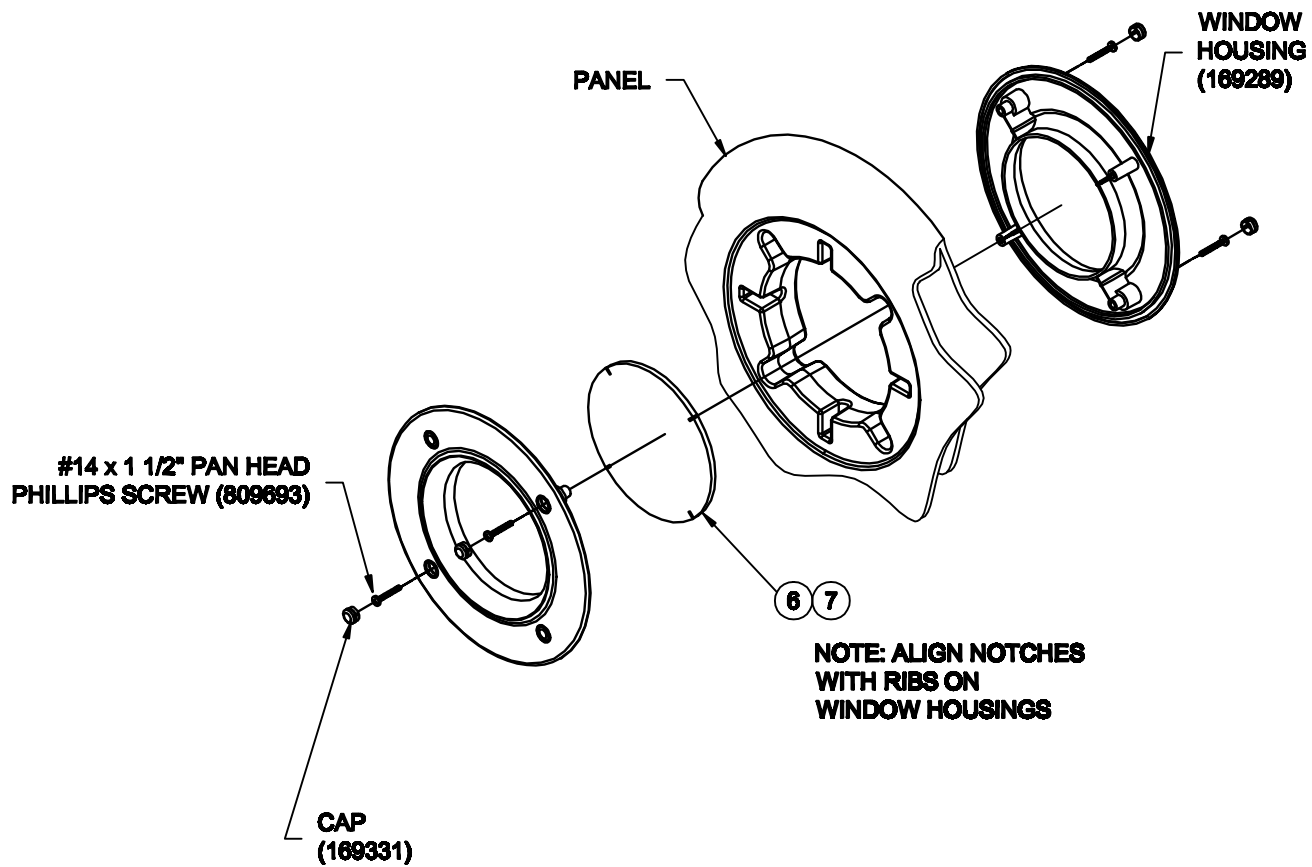


ASSEMBLY DRAWING
4839



ASSEMBLY DRAWING
4840/4841/4847





ASSEMBLY DRAWING
4845/4846



Enriching Childhood Through Play™

1-800-235-2440

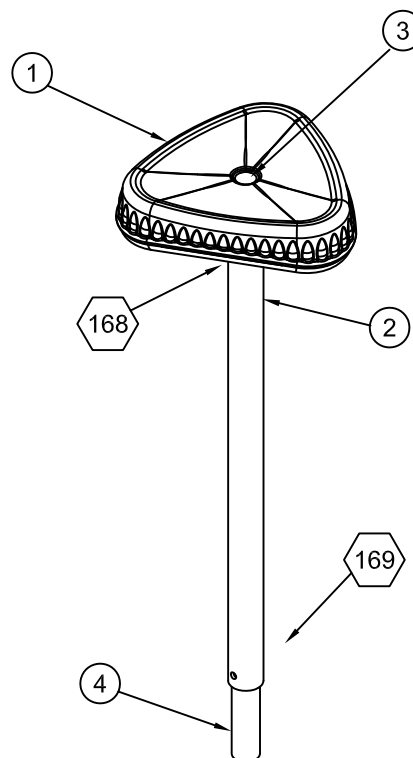
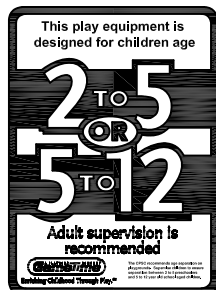
6141

MINI POD TOAD STOOL

ISSUED/REVISED: 03/30/11

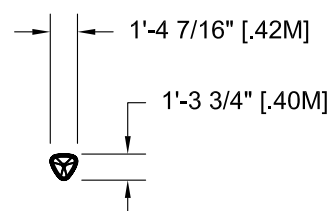
⬡ = INSTALLATION
DETAIL

○ = PARTS LIST
REFERENCE



*OWNER/OPERATOR SHALL INSTALL AND MAINTAIN PROTECTIVE SURFACING WITHIN THE USE ZONE (U.S.) OR PROTECTIVE SURFACING ZONE (CANADA) OF ALL PLAY EQUIPMENT TO COMPLY WITH ASTM F1292 AND ASTM F1487 (U.S.) OR CAN/CSA-Z614 (CANADA).

*THE ASTM USE ZONE AND CSA PROTECTIVE SURFACING ZONE ARE DETERMINED BY EXTENDING THE PRODUCT OUTSIDE DIMENSIONS SHOWN A MINIMUM ADDITIONAL DISTANCE OF 6'-0" [1.8M] IN ALL DIRECTIONS. FOR CANADIAN INSTALLATIONS ONLY, AN ADDITIONAL 1.8M LONG (MINIMUM) NO-ENCROACHMENT ZONE IS REQUIRED BEYOND THE PROTECTIVE SURFACING ZONE.





IMPORTANT PRODUCT INFORMATION AND SAFETY WARNINGS



- ☐ All equipment should be installed on a soft, resilient, energy-absorbing ground surface. NEVER INSTALL PLAY EQUIPMENT ON CONCRETE OR ASPHALT. A fall on a hard surface can result in serious injury to the equipment user.
- ☐ ALWAYS FOLLOW INSTALLATION INSTRUCTIONS WHEN ERECTING EQUIPMENT.
- ☐ Worn surfaces around equipment should be restored. Concrete footings should never be exposed. Surface depth should comply with installation instructions.
- ☐ Equipment should be placed to eliminate conflicting traffic patterns.
- ☐ All protruding nuts and bolts should be covered; sharp edges on pipes should be capped or removed. Check for bent, broken or severely worn pipe and replace.
- ☐ Test overall stability and rigidity of all play equipment. Check for proper assembly, installation and ground anchoring.
- ☐ Check for and repair damage caused by wear or vandalism, a major factor in injury-causing situations.
- ☐ GAMETIME® PROVIDES ITS CUSTOMERS WITH COMPLETE SPECIFICATION SHEETS AND INSTALLATION INSTRUCTIONS. THE SPECIFICATION SHEET CONTAINS THE LISTING OF EVERY PART USED IN A PIECE OF EQUIPMENT AND SHOULD BE KEPT IN THE CUSTOMER'S FILES FOR ACCURATE REFERENCE WHEN REPLACEMENT PARTS ARE NEEDED.
- ☐ Never add components not intended for use with this product.
- ☐ Regular maintenance is necessary on this and all park and recreational equipment to ensure the safety of the user.
- ☐ Proper maintenance of GAMETIME® equipment requires regular tightening of all bolts, nuts, and set screws.
- ☐ Check to be sure all fittings are tight and that the bars and pipes do not move.
- ☐ A soft, resilient surface should be placed under all climbers, extending at least six feet in all directions surrounding the climbers. NEVER INSTALL PLAY EQUIPMENT ON CONCRETE OR ASPHALT.

SPECIFICATIONS

Mini Pod: The Mini Pod shall be rotational molded from polyethylene. The polyethylene shall be linear low-density material with UV-stabilized color and an anti-static compound additive. All rotational molded products shall meet or exceed the following specifications: ASTM D-1248, type 2, class A and Federal specification LP-390C, type 1, class M, grade 2, category 3; Density (ASTM D-155); Brittleness Temperature (ASTM D-746); Tensile Values (ASTM D-638); Flexural Modulus (ASTM D-790); Heat Distortion (ASTM-648); Low Temperature Impact (ARM-STD).

FRAME: Shall be an all welded assembly fabricated of 2.375" O.D. galvanized steel tubing with a wall thickness of .095" and 12 gauge (.109") hot rolled flat steel that is formed. This assembly shall have a powder coat finish.

EXTENSION: Shall be fabricated of 1.9" O.D. galvanized steel tubing with a wall thickness of .095"

PLUG: Shall be fabricated of black butyl rubber with a durometer of 60.

HARDWARE: All nuts, bolts, screws, inserts, and lock washers used in the assembly of all play equipment, shall be stainless steel, yellow dichromate plated steel, blue-coat plated steel, mechanically galvanized or powder coated/yellow dichromate plated steel. All primary fasteners shall be 300 series stainless steel.

Fasteners with yellow dichromate treatment have an electro deposited, 99.9% pure zinc substrate applied from a specially formulated solution sealed with a yellow dichromate top coat designed to work in conjunction with the zinc plating. Yellow dichromate has a 320% longer life to white corrosion and 275% longer to red corrosion than does hot-dip galvanizing.

NOTE: All weights are based on average comparisons of each part.

SPECIFICATIONS: GAMETIME® has a policy of continuous improvement and reserves the right to discontinue or change specifications without notice.

SET UP INSTRUCTIONS

NOTE: THIS SPECIFICATION BOOKLET SHOULD BE KEPT IN

CUSTOMERS FILE FOR FUTURE REFERENCE.

NOTE: Do not over tighten bolts. To over tighten may cause buckling or dimpling of some parts.

NOTE: Read installation instructions thoroughly before starting assembly. Pour concrete only after final assembly is complete. Bracing material may be required during assembly.

NOTE: Do not tighten any nuts, bolts, rods, etc. until the unit is completely assembled.

NOTE: Apply construction adhesive or rubber glue to Rubber Plug when installing.

NOTE: Assembly and leveling time will be greatly reduced if a transit is used to set location and depth of ground holes.

NOTE: Due to extremes in weather and soil conditions, hole size may have to be increased to meet local conditions.

STEP 1: Dig required hole. See Ground Plan for correct shape and size.

STEP 2: Insert the Plug into the Mini Pod and fasten the Mini Pod to the Mounting Post using detail 168

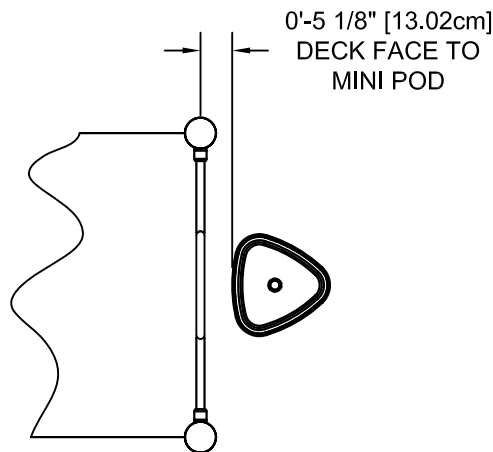
STEP 3: Determine if the extension is to be used. Fasten the Extension to the Mounting Post using Detail 169. If the extension is not used, fasten the carriage bolt to the Mounting Post without the extension.

STEP 4: Tighten all connections. Plumb and level the Mini Pod Toadstool and pour concrete. ALLOW THE CONCRETE TO SET AT LEAST 72 HOURS BEFORE USE.

NOTE: After Installation, the Mini Pod height should be 1'-0" [30.48cm] or 1'-6" [45.72cm] (if the extension is used) above the protective surfacing.

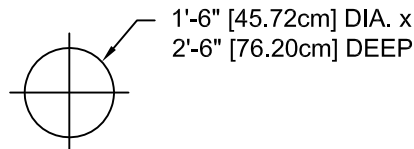
NOTE: We suggest you retighten all bolts after the unit has been used three to four days.

NOTE: Loctite (supplied by others) should be used on all threaded hardware.



TOP VIEW

* THE SPACE BETWEEN MINI PODS WHEN USED ADJACENT TO EACH OTHER SHOULD NOT EXCEED 1'-6" [45.72cm] EDGE TO EDGE.



GROUND PLAN

Concrete Required:

.10 Cubic Yards

[.07 Cubic Meters]

SHOCK ABSORBING PROPERTIES OF SURFACING MATERIALS VARY. IF YOU DETERMINE THAT LESS THAN 1'-0" [30.48cm] OF SURFACING IS REQUIRED. MAKE UP THE DIFFERENCE IN ELEVATION WITH EARTH BEFORE APPLYING SURFACING.

NOTE:

SUGGESTED MINIMUM CONCRETE RATING: 3000 PSI

HOLE DEPTHS INDICATED ON ALL GROUND PLANS ARE MEASURED FROM THE FINISHED SURFACE. SEE TYPICAL FOOTING DETAIL. ALL FOOTING DIMENSIONS ARE BASED ON LEVEL FINISHED SURFACE.

PARTS LIST

REF NO.	DESCRIPTION	6141	PART NUMBER
1	Roto-Molded Mini Pod	1	176364
2	Mounting Post	1	176477
	Hardware Complete	1	176444
	3/8" x 1" B.H.C.S.	4	811050*
	3/8" Lock Washer	4	817334*
	3/8" Flat Washer	4	817410*
	3/8" Hex Nut	1	804053*
	3/8" x 5" Carriage Bolt	1	800269*
3	Plug	1	176441*
4	Extension	1	151080*

*Unless Otherwise Specified, All Units of Measure are Each
* Included in Hardware*

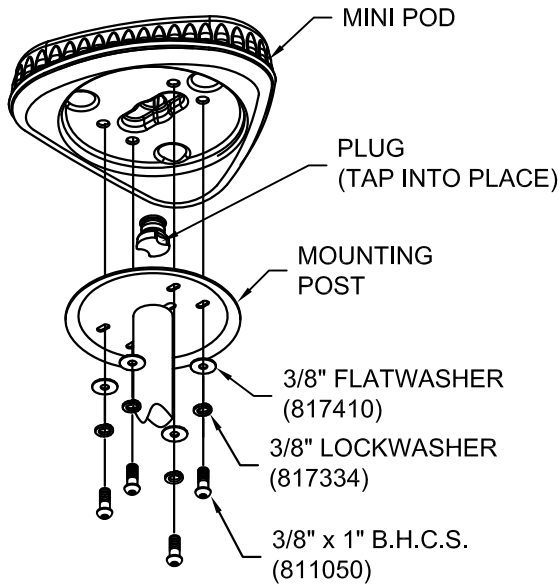
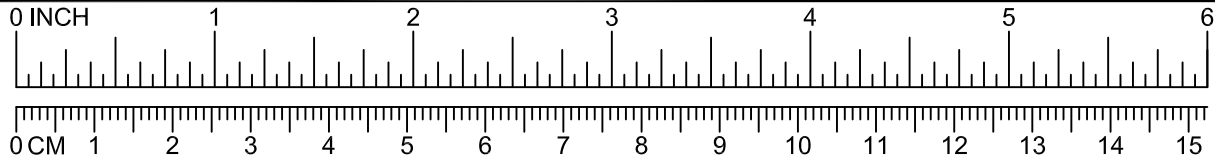
Warning: During Installation, Hardware And Small Parts Are Choking Hazards For Young Children. Store Unused Parts Appropriately Until Assembly Is Completed. Once Assembly Is Completed, Remove Any Unused Parts From The Play Environment And Dispose/Save Them In A Secure Location.

DETAILS -for- 6141

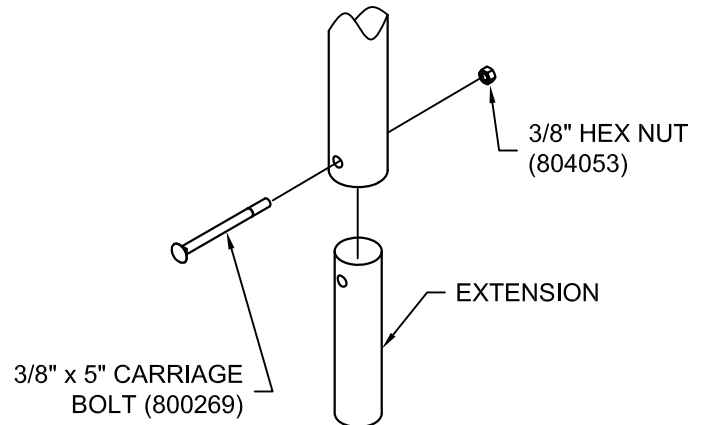
IMPORTANT

To Reduce the Risk of Clothing Entanglement in Compliance with ASTM F1487, Any Bolt End Protruding More Than Two Full Threads Beyond the Face of the Nut Shall Be Cut-Off Flush, Filed Smooth and Treated to Prevent Corrosion.

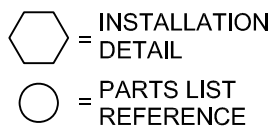
NOTE: AFTER ASSEMBLY IS COMPLETE, PEEN TEE-NUTS AND FLATWASHERS TO MATCH RADIUS OF PIPE.



168



169



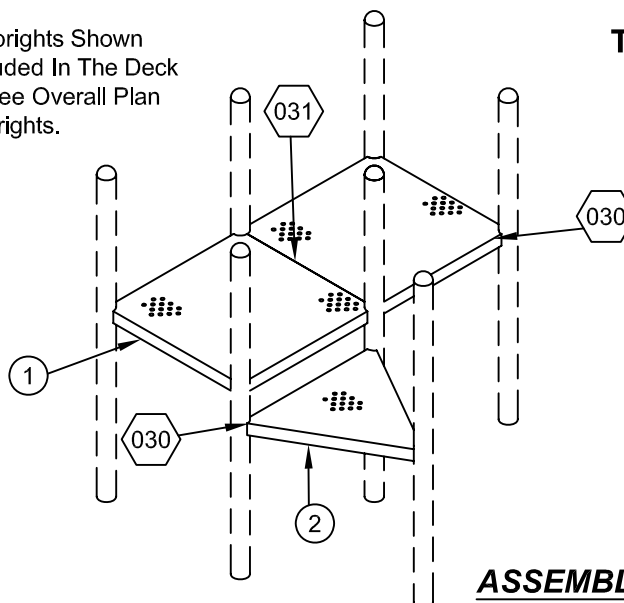
Note: The Uprights Shown
Are Not Included In The Deck
Packages. See Overall Plan
View For Uprights.

SQUARE 80000
TRIANGLE 80001

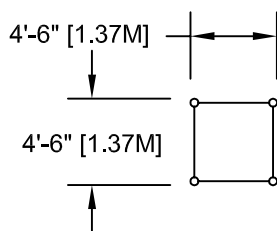
INSTALLATION INSTRUCTIONS

1. Before assembling this equipment, read the enclosed *Installer Instructions* in the installation booklet; follow all the instructions during assembly.
2. Dig ground holes per Ground Plan. See system topview for quantity.
3. Attach deck to uprights using (1) Detail 030 per upright.
4. Loctite (supplied by others) should be used on all threaded hardware.
5. When decks are at the same height as shown in Assembly Drawing, fasten together using (2) Detail 031.

NOTE: Remove vinyl from the two inside holes, with 1/2" bit.

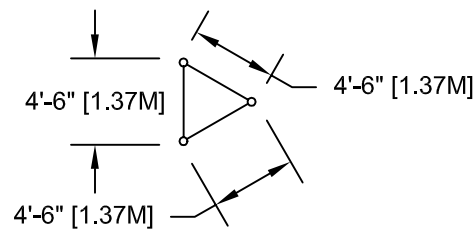


ASSEMBLY DRAWING



80000

TOP VIEWS

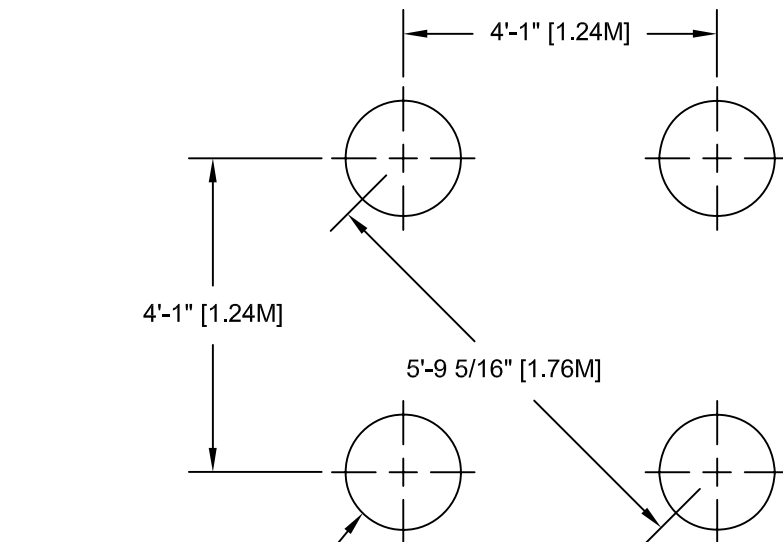


80001

PARTS LIST

REF NO.	DESCRIPTION			PART NUMBER
		80000	80001	
1	Punched Deck, Square	1	0	163307
2	Punched Deck, Triangle	0	1	163317
	Hardware Complete	1	0	161254
	Hardware Complete	0	1	161255
	3/8" x 3/4" P.B.H.C.S. w/Patch	2	2	812052*
	3/8" x 1 1/2" P.B.H.C.S.	8	6	810053*
	3/8" Tee-Nut	2	2	804556*
	3/8" Lockwasher	10	8	817334*
	3/8" Flatwasher (1 1/4" O.D.)	10	8	817424*

Unless Otherwise Specified, All Units of Measure are Each
* Included in Hardware

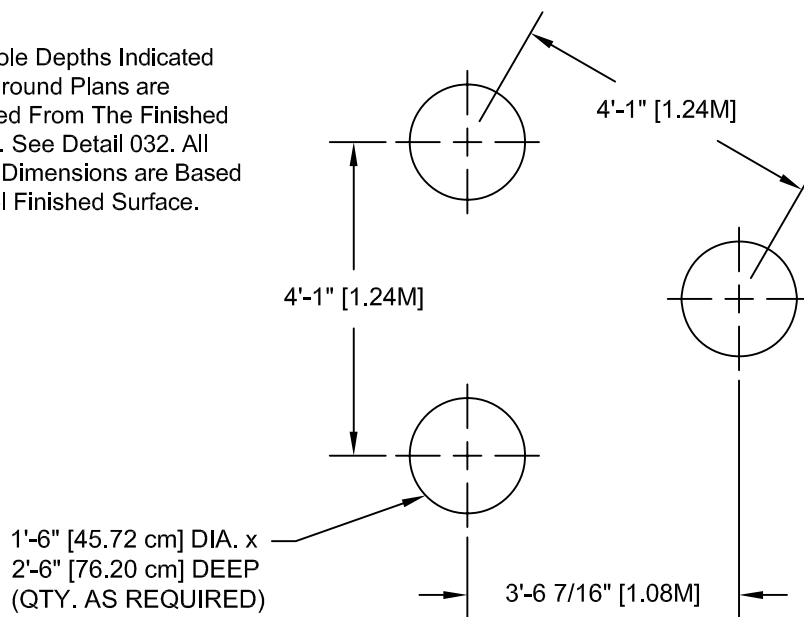


1'-6" [45.72 cm] DIA. x
2'-6" [76.20 cm] DEEP
(QTY. AS REQUIRED)
SEE DETAIL 032

80000

Concrete Required
.10 Cubic Yards [.07 cm]
Per Upright Ground Hole

Note: Hole Depths Indicated
on All Ground Plans are
Measured From The Finished
Surface. See Detail 032. All
Footing Dimensions are Based
on Level Finished Surface.



1'-6" [45.72 cm] DIA. x
2'-6" [76.20 cm] DEEP
(QTY. AS REQUIRED)
SEE DETAIL 032

80001

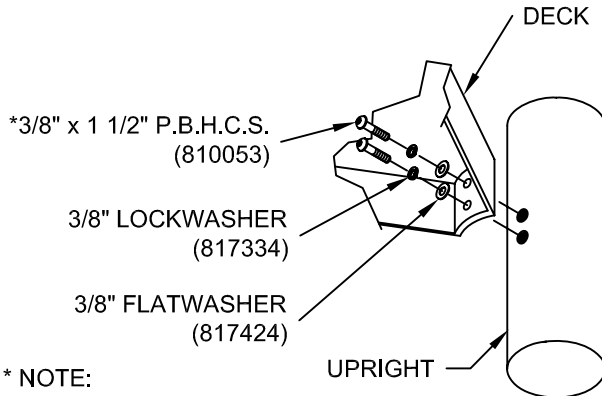
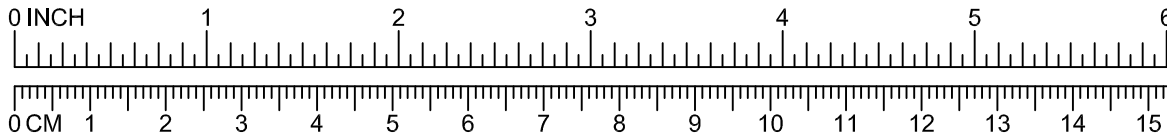
GROUND PLANS

DETAILS -for- 80000 & 80001

IMPORTANT

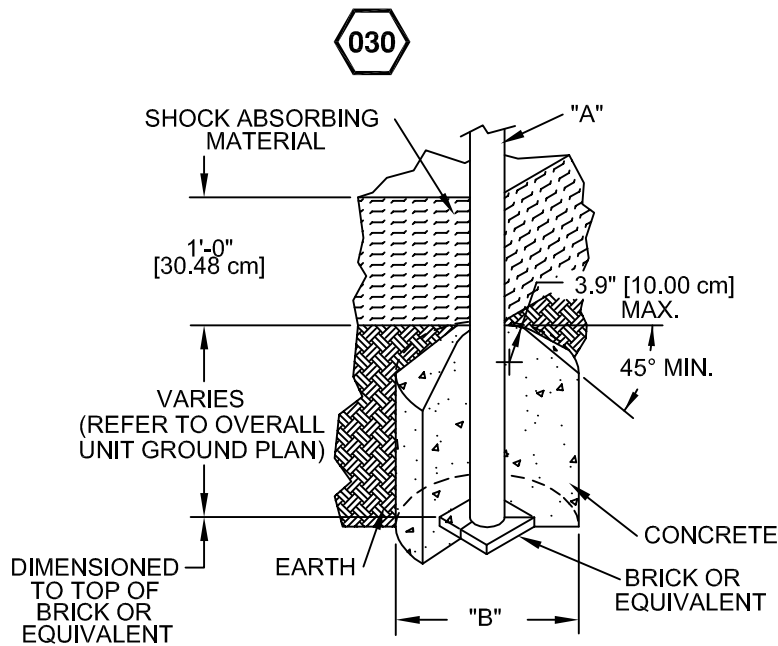
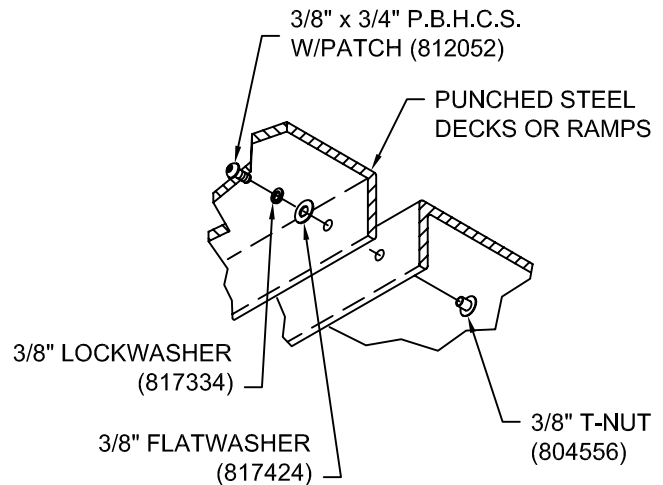
To REDUCE THE RISK OF CLOTHING ENTANGLEMENT IN COMPLIANCE WITH ASTM F1487, ANY BOLT END PROTRUDING MORE THAN TWO FULL THREADS BEYOND THE FACE OF THE NUT SHALL BE CUT-OFF FLUSH, FILED SMOOTH AND TREATED TO PREVENT CORROSION.

NOTE: AFTER ASSEMBLY IS COMPLETE, PEEN TEE-NUTS AND FLATWASHERS TO MATCH RADIUS OF PIPE.



* NOTE:
BOLTS SHOULD BE TORQUED
FROM 20-25 FT. LBS. FOR
PROPER INSTALLATION.

* NOTE:
AFTER ASSEMBLY IS COMPLETED,
PEEN FLATWASHERS TO MATCH
RADIUS OF UPRIGHT.



DIA. "A" (PIPE SIZE)	DIA. "B" (FOOTING SIZE)
1 1/16" [2.70 cm]	1'-2" [35.56 cm]
1 5/16" [3.33 cm]	1'-2" [35.56 cm]
1 5/8" [4.13 cm]	1'-2" [35.56 cm]
1 7/8" [4.83 cm]	1'-2" [35.56 cm]
2 3/8" [6.03 cm]	1'-2" [35.56 cm]
3 1/2" [8.89 cm]	1'-6" [45.72 cm]
5" [12.70 cm]	1'-6" [45.72cm]
TRACK RIDE & SWINGS	
5" [12.70 cm]	2'-0" [60.96 cm]
TREE SCAPE	
5" [12.70 cm]	4'-0" [121.92 cm]

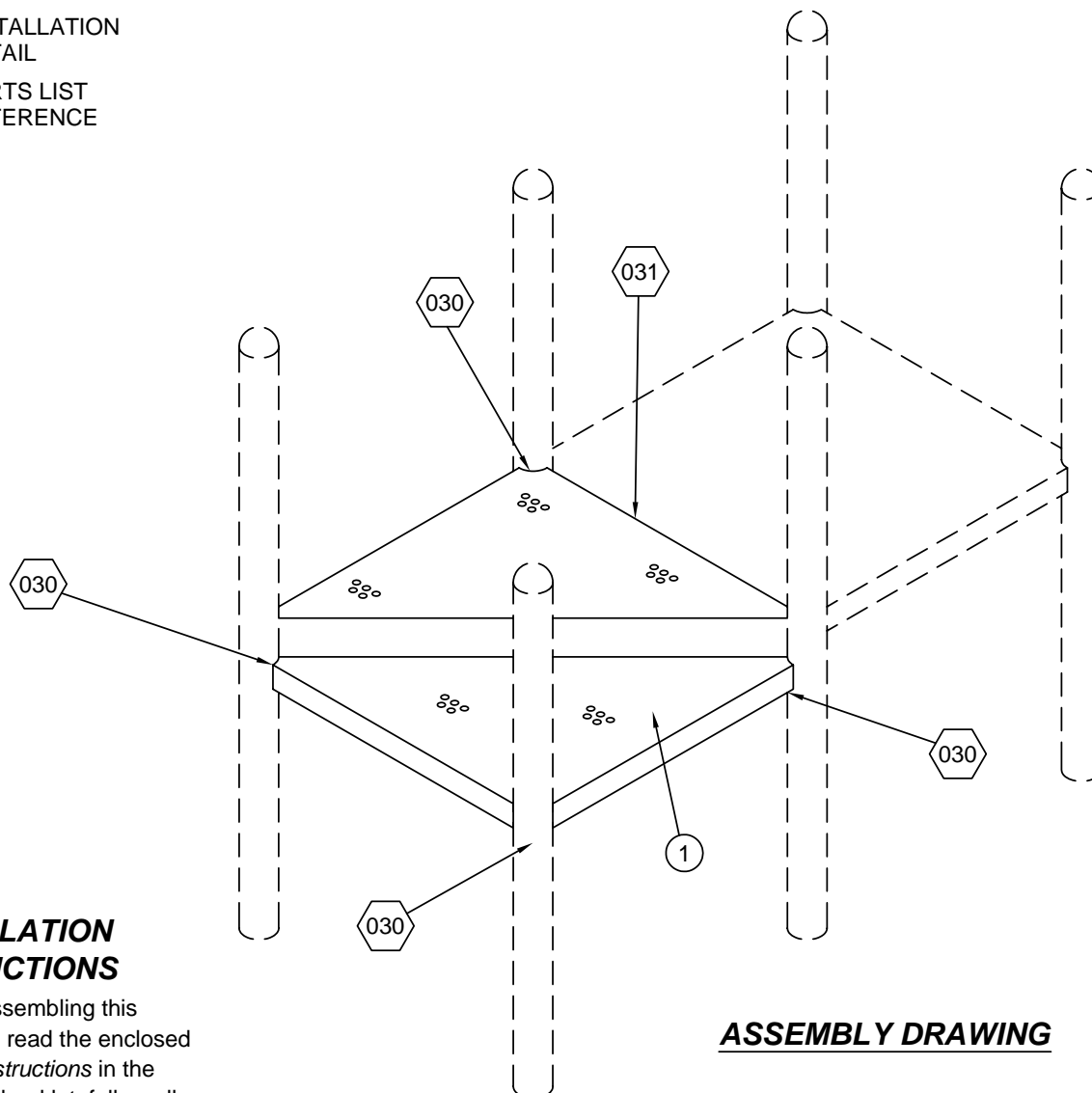
NOTES:

- SLOPED FOOTING IS A REQUIREMENT OF EUROPEAN STANDARD EN1176-1 ONLY
- SUGGESTED MINIMUM CONCRETE RATING: 3000 PSI

SHOCK ABSORBING PROPERTIES OF SURFACING MATERIALS VARY. IF YOU DETERMINE THAT LESS THAN 1'-0" [30.48cm] OF SURFACING IS REQUIRED, MAKE UP THE DIFFERENCE IN ELEVATION WITH EARTH, BEFORE APPLYING SURFACING.

⬡ = INSTALLATION
DETAIL

○ = PARTS LIST
REFERENCE



INSTALLATION INSTRUCTIONS

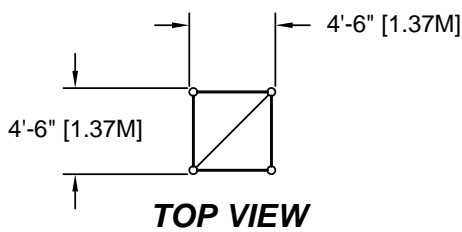
1. Before assembling this equipment, read the enclosed *Installer Instructions* in the installation booklet; follow all the instructions during assembly.

2. Assemble parts as shown in the *Assembly Drawing*. Refer to the assembly details for the specific hardware required in each connection.

3. Loctite (supplied by others) should be used on all non-patch hardware.

4. When Decks are at the same height shown in *Assembly Drawing*, fasten together using (2) Detail 031. *Note:* Remove Vinyl from the two inside holes, ream with 1/2" bit.

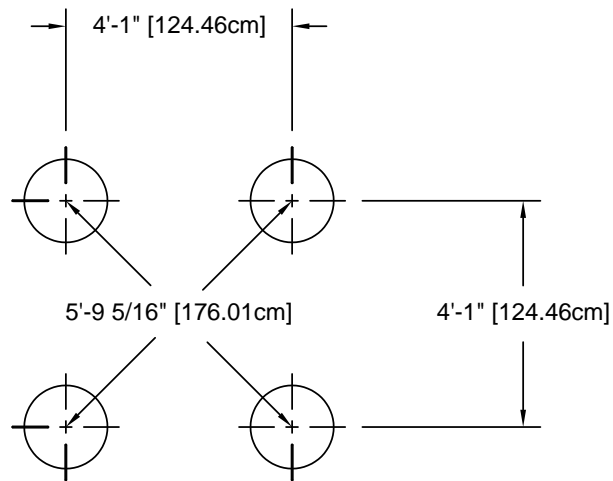
ASSEMBLY DRAWING



SUGGESTED MINIMUM
CONCRETE RATING:
3000 PSI.

SLOPED FOOTING IS A
REQUIREMENT OF
EUROPEAN STANDARD
EN1176-1.

CONCRETE REQUIRED
.39 CUBIC YARDS
[.30 CUBIC METERS]



GROUND PLAN

Note: Hole Depths Indicated on All Ground Plans are Measured From The Finished Surface. See Detail 032. All Footing Dimensions are Based on Level Finished Surface.

PARTS LIST

REF NO.	DESCRIPTION	NO. REQ'D.	PART NUMBER
1	6" Stepped Platform	2	176223
	<i>Hardware Complete</i>	1	176315
	3/8" x 3/4" P.B.H.C.S. w/ Patch	2	812052*
	3/8" x 1 1/2" P.B.H.C.S.	12	810053*
	3/8" Tee-Nut	2	804556*
	3/8" Lockwasher	14	817334*
	3/8" Flatwasher (1-1/4" O.D.)	14	817424*

*Unless Otherwise Specified, All Units of Measure are Each
* Included in Hardware*

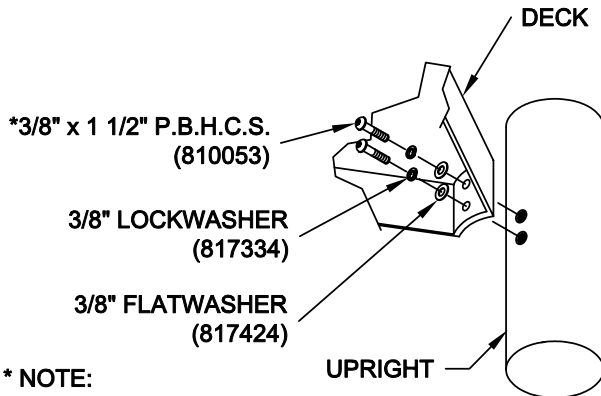
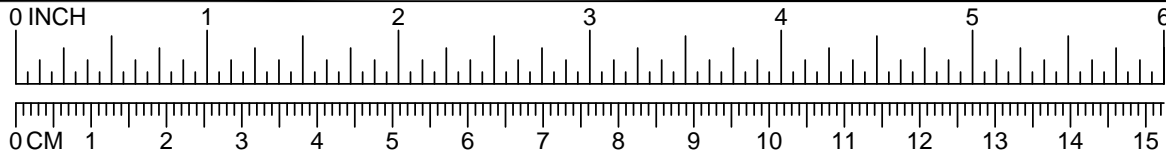
Warning: During Installation, Hardware And Small Parts Are Choking Hazards For Young Children. Store Unused Parts Appropriately Until Assembly Is Completed. Once Assembly Is Completed, Remove Any Unused Parts From The Play Environment And Dispose/Save Them In A Secure Location.

DETAILS -for- 80078

IMPORTANT

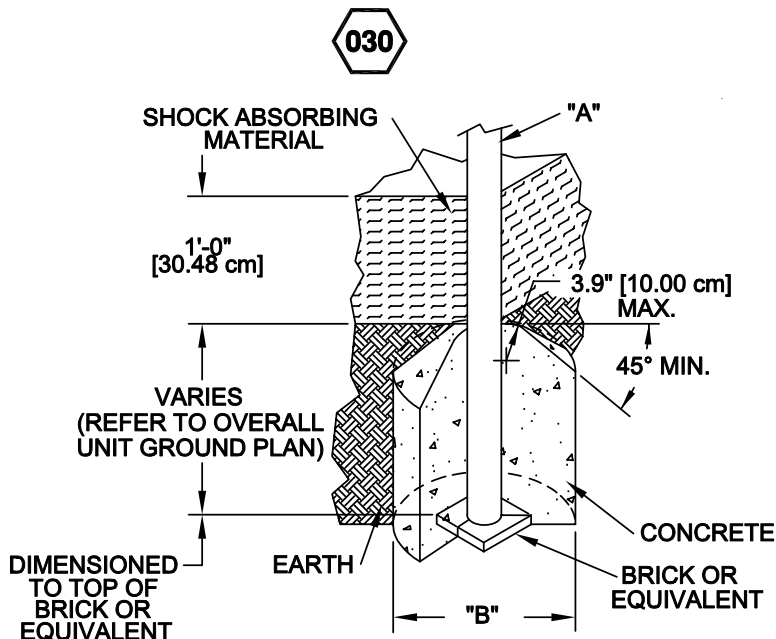
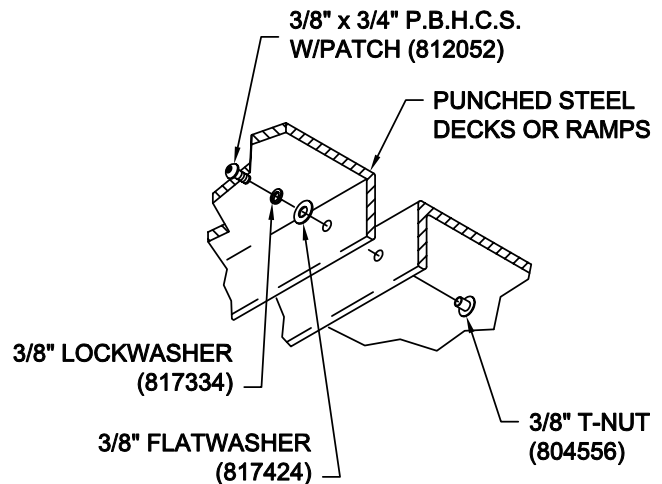
TO REDUCE THE RISK OF CLOTHING ENTANGLEMENT IN COMPLIANCE WITH ASTM F1487, ANY BOLT END PROTRUDING MORE THAN TWO FULL THREADS BEYOND THE FACE OF THE NUT SHALL BE CUT-OFF FLUSH, FILED SMOOTH AND TREATED TO PREVENT CORROSION.

NOTE: AFTER ASSEMBLY IS COMPLETE, PEEN TEE-NUTS AND FLATWASHERS TO MATCH RADIUS OF PIPE.



* NOTE:
BOLTS SHOULD BE TORQUED
FROM 20-25 FT. LBS. FOR
PROPER INSTALLATION.

* NOTE:
AFTER ASSEMBLY IS COMPLETED,
PEEN FLATWASHERS TO MATCH
RADIUS OF UPRIGHT.



DIA. "A" (PIPE SIZE)	DIA. "B" (FOOTING SIZE)
1 1/16" [2.70 cm]	1'-2" [35.56 cm]
1 5/16" [3.33 cm]	1'-2" [35.56 cm]
1 5/8" [4.13 cm]	1'-2" [35.56 cm]
1 7/8" [4.83 cm]	1'-2" [35.56 cm]
2 3/8" [6.03 cm]	1'-2" [35.56 cm]
3 1/2" [8.89 cm]	1'-6" [45.72 cm]
5" [12.70 cm]	1'-6" [45.72cm]
TRACK RIDE & SWINGS	
5" [12.70 cm]	2'-0" [60.96 cm]
TREE SCAPE	
5" [12.70 cm]	4'-0" [121.92 cm]

NOTES:
-SLOPED FOOTING IS A REQUIREMENT
OF EUROPEAN STANDARD EN1176-1
-SUGGESTED MINIMUM CONCRETE
RATING: 3000 PSI

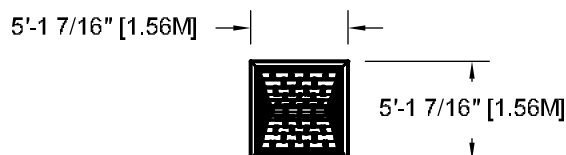
**SHOCK ABSORBING PROPERTIES OF SURFACING
MATERIALS VARY. IF YOU DETERMINE THAT LESS
THAN 1'-0" [30.48cm] OF SURFACING IS REQUIRED,
MAKE UP THE DIFFERENCE IN ELEVATION WITH
EARTH, BEFORE APPLYING SURFACING.**

 = INSTALLATION
= DETAIL

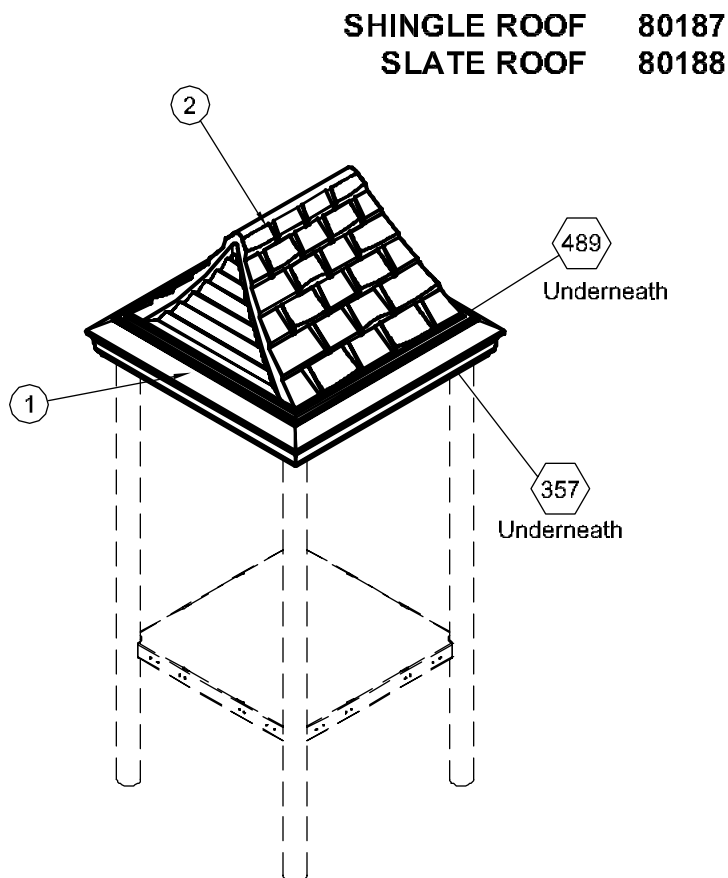
 = PARTS LIST
= REFERENCE

INSTALLATION INSTRUCTIONS

1. Before assembling this equipment, read the enclosed INSTALLATION INSTRUCTIONS in the installation booklet; follow all the instructions during installation.
2. Assemble parts as shown in the ASSEMBLY DRAWING. Refer to the assembly details for the specific hardware required in each connection.
3. Loctite (supplied by others) should be used on all threaded hardware.



TOP VIEW



ASSEMBLY DRAWING

PARTS LIST

REF NO.	DESCRIPTION	NO. REQUIRED		PART NUMBER
		80187	80188	
1	Roof Base	1	1	168135
2	Shingle Roof	1	0	177716
2	Slate Roof	0	1	177722
	Hardware Complete	1	1	177956
	3/8" x 3 1/2" P.B.H.C.S. w/Patch	4	4	812075*
	3/8" x 5" Hex Head Bolt	4	4	801019*
	3/8" Lockwasher	8	8	817334*
	3/8" Flatwasher	4	4	817410*
	3/8" Flatwasher (1 1/4" O.D.)	4	4	817424*
	Molded Bolt Guard	4	4	156079*

Unless Otherwise Specified, All Units of Measure are Each

* Included in Hardware

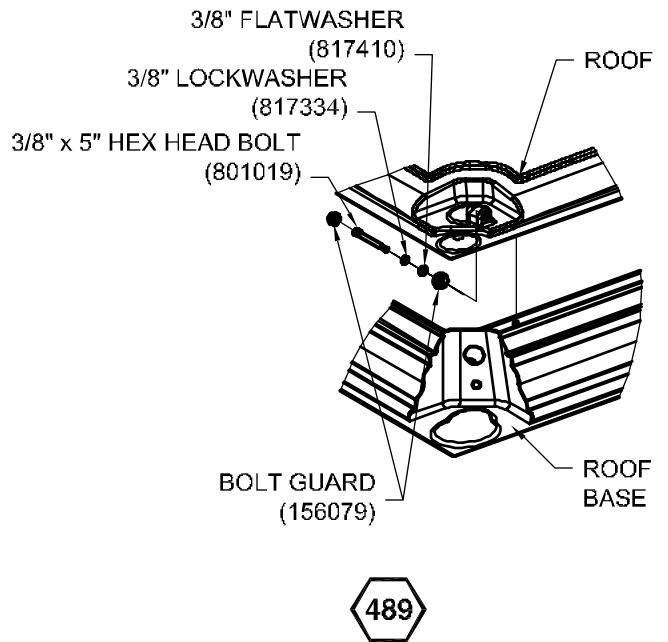
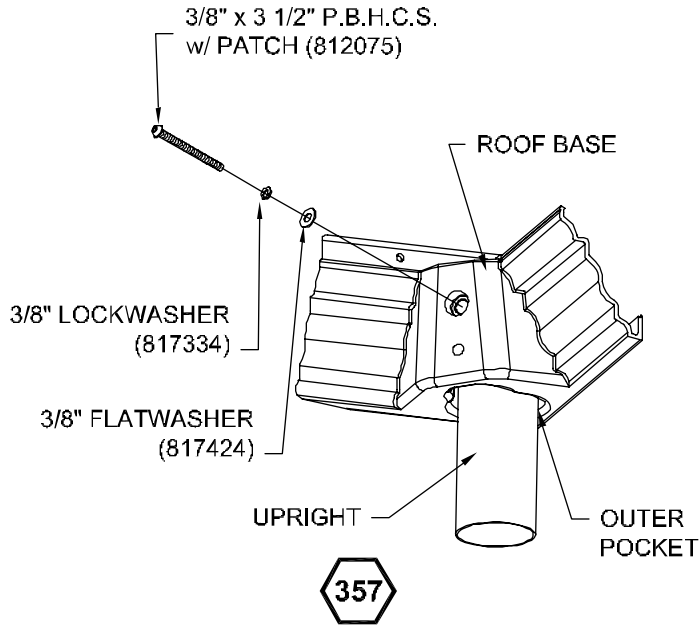
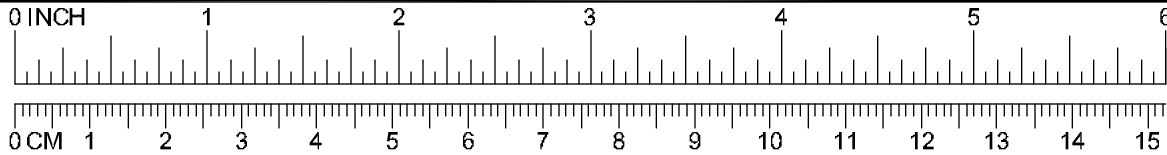
Warning: During Installation, Hardware And Small Parts Are Choking Hazards For Young Children. Store Unused Parts Appropriately Until Assembly Is Completed. Once Assembly Is Completed, Remove Any Unused Parts From The Play Environment And Dispose/Save Them In A Secure Location.

DETAILS -for- 80187 & 80188

IMPORTANT

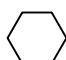

TO REDUCE THE RISK OF CLOTHING ENTANGLEMENT IN COMPLIANCE WITH ASTM F1487, ANY BOLT END PROTRUDING MORE THAN TWO FULL THREADS BEYOND THE FACE OF THE NUT SHALL BE CUT-OFF FLUSH, FILED SMOOTH AND TREATED TO PREVENT CORROSION.

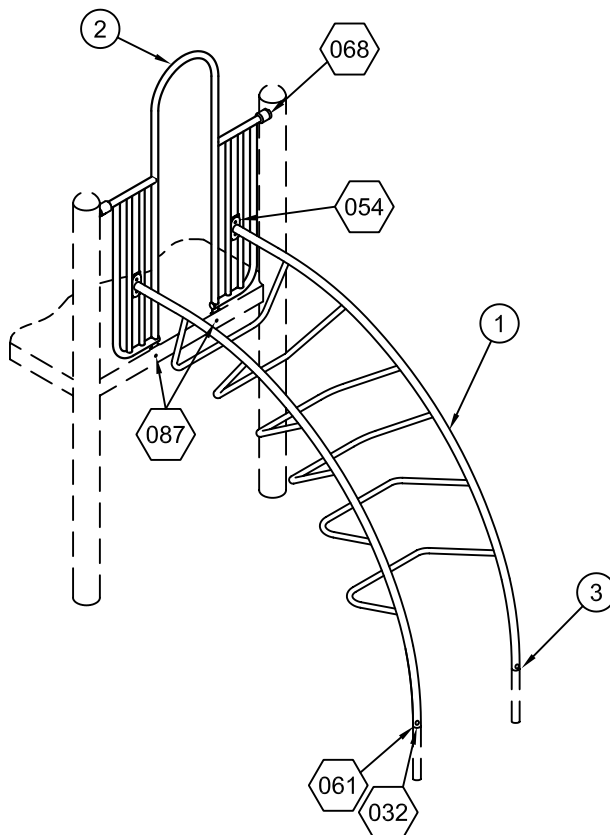
NOTE: AFTER ASSEMBLY IS COMPLETE, PEEN TEE-NUTS AND FLATWASHERS TO MATCH RADIUS OF PIPE.



80309

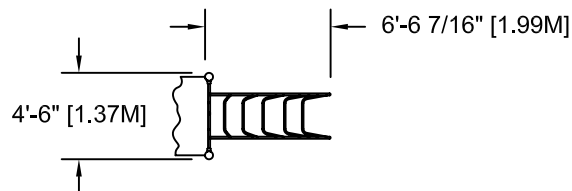
LOOP LADDER

 = INSTALLATION
DETAIL
 = PARTS LIST
REFERENCE



ASSEMBLY DRAWING

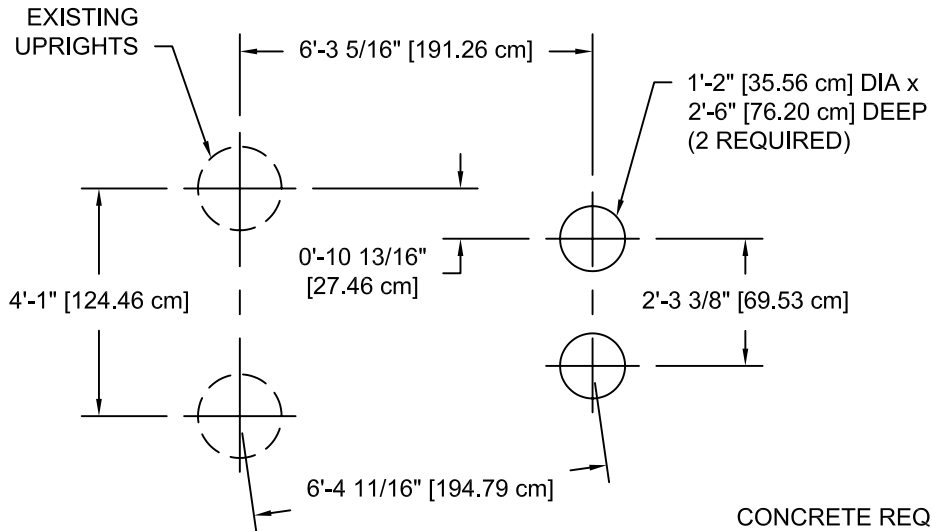
2'-6"	80309
3'-0", 3'-6", & 4'-0"	80310
5'-0"	80311
6'-0"	80312



TOP VIEW

INSTALLATION INSTRUCTIONS

1. Before assembling this equipment, read the enclosed INSTALLATION INSTRUCTIONS in the installation booklet; follow all the instructions during installation.
2. Assemble parts as shown in the ASSEMBLY DRAWING. Refer to the assembly details for the specific hardware required in each connection.
3. Apply the PowerBond to the PowerLock threads as shown in detail 068.



NOTE: HOLE DEPTHS INDICATED ON ALL GROUND PLANS ARE MEASURED FROM THE FINISHED SURFACE. SEE DETAIL 032. ALL FOOTING DIMENSIONS ARE BASED ON LEVEL FINISHED SURFACE.

GROUND PLAN

CONCRETE REQUIRED:
.12 CUBIC YARDS
[.09 CUBIC METERS]

PARTS LIST

REF. No.	DESCRIPTION	No. REQUIRED				PART NUMBER
		80309	80310	80311	80312	
1	Loop Ladder Ass'y	1	0	0	0	177468
1	Loop Ladder Ass'y	0	1	0	0	177470
1	Loop Ladder Ass'y	0	0	1	0	177472
1	Loop Ladder Ass'y	0	0	0	1	177474
2	Entrance Archway	1	1	1	1	177448
	Hardware Complete	1	0	1	0	164435
	Hardware Complete	0	1	0	0	166013
	Hardware Complete	0	0	0	1	177515
3	1'-5/8" O.D. Extension	0	2	0	2	137926*
3	Extension Leg	0	2	0	0	152110*
	Locking Collar	2	2	2	2	162964*
	Power Lock Base	2	2	2	2	Z63515*
	Power Lock Cap	2	2	2	2	Z63517*
	3/8"x 1 3/4" Hex Head Bolt	2	2	2	2	801006*
	3/8"x 2 1/2" Hex Head	0	4	0	2	801009*
	3/8" Acorn Nut	4	4	4	4	804002*
	3/8" Hex Nut	0	4	0	2	804053*
	3/8" Tee Nut	2	2	2	2	804556*
	3/8"x 3/4" P.B.H.C.S. w/Patch	2	2	2	2	812052*
	3/8"x 1" P.B.H.C.S. w/Patch	4	4	4	4	812050*
	3/8" Lockwasher	8	12	8	10	817334*
	3/8" Flatwasher	10	10	10	10	817410*
	3/8" Flatwasher (1/4" O.D.)	2	2	2	2	817424*

Unless Otherwise Specified, All Units of Measure are Each
* Included in Hardware

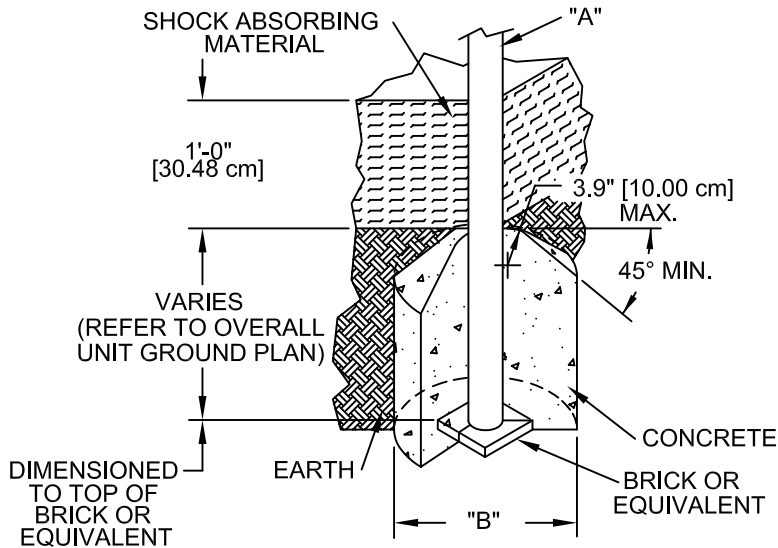
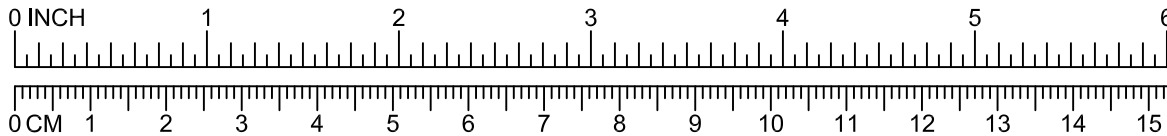
Warning: During Installation, Hardware And Small Parts Are Choking Hazards For Young Children. Store Unused Parts Appropriately Until Assembly Is Completed. Once Assembly Is Completed, Remove Any Unused Parts From The Play Environment And Dispose/Save Them In A Secure Location.

DETAILS -for- 80309, 80310, 80311 & 80312

IMPORTANT

To REDUCE THE RISK OF CLOTHING ENTANGLEMENT IN COMPLIANCE WITH ASTM F1487, ANY BOLT END PROTRUDING MORE THAN TWO FULL THREADS BEYOND THE FACE OF THE NUT SHALL BE CUT-OFF FLUSH, FILED SMOOTH AND TREATED TO PREVENT CORROSION.

NOTE: AFTER ASSEMBLY IS COMPLETE, PEEN TEE-NUTS AND FLATWASHERS TO MATCH RADIUS OF PIPE.



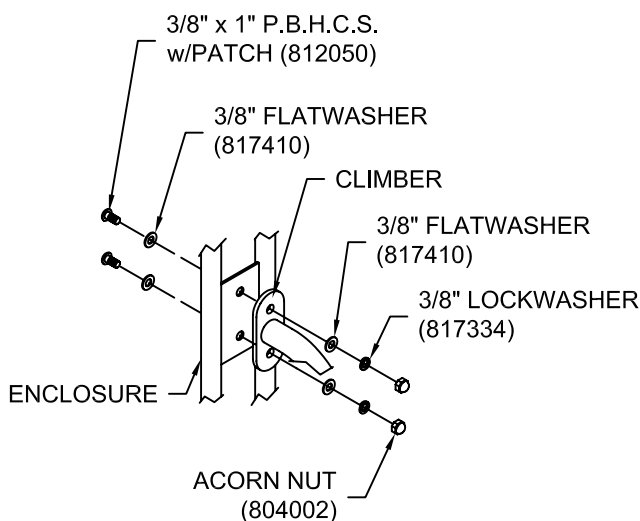
DIA. "A" (PIPE SIZE)	DIA. "B" (FOOTING SIZE)
1 1/16" [2.70 cm]	1'-2" [35.56 cm]
1 5/16" [3.33 cm]	1'-2" [35.56 cm]
1 5/8" [4.13 cm]	1'-2" [35.56 cm]
1 7/8" [4.83 cm]	1'-2" [35.56 cm]
2 3/8" [6.03 cm]	1'-2" [35.56 cm]
3 1/2" [8.89 cm]	1'-6" [45.72 cm]
5" [12.70 cm]	1'-6" [45.72 cm]
TRACK RIDE & SWINGS	
5" [12.70 cm]	2'-0" [60.96 cm]
TREE SCAPE	
5" [12.70 cm]	4'-0" [121.92 cm]

NOTES:

- SLOPED FOOTING IS A REQUIREMENT OF EUROPEAN STANDARD EN1176-1 ONLY
- SUGGESTED MINIMUM CONCRETE RATING: 3000 PSI

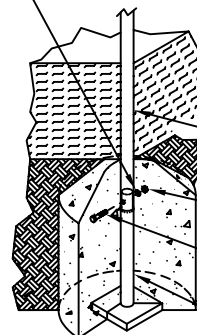
032

SHOCK ABSORBING PROPERTIES OF SURFACING MATERIALS VARY. IF YOU DETERMINE THAT LESS THAN 1'-0" [30.48cm] OF SURFACING IS REQUIRED, MAKE UP THE DIFFERENCE IN ELEVATION WITH EARTH, BEFORE APPLYING SURFACING.



054

3/8" LOCKWASHER (817334)



061

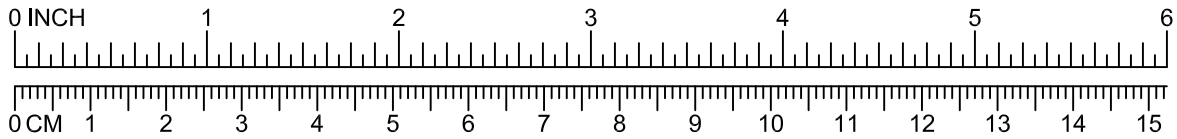
LEG (PIPE DIA.)	BOLT REQUIRED
1 5/16" [3.3 cm]	3/8" x 2" HEX HEAD (801007)
1 5/8" [4.1 cm]	3/8" x 2 1/2" HEX HEAD (801009)
1 7/8" [4.7 cm]	3/8" x 3" HEX HEAD (801011)
2 3/8" [6.0 cm]	3/8" x 3 1/2" HEX HEAD (801013)
2 7/8" [7.3 cm]	3/8" x 4" HEX HEAD (801015)

DETAILS -for- 80309, 80310, 80311 & 80312

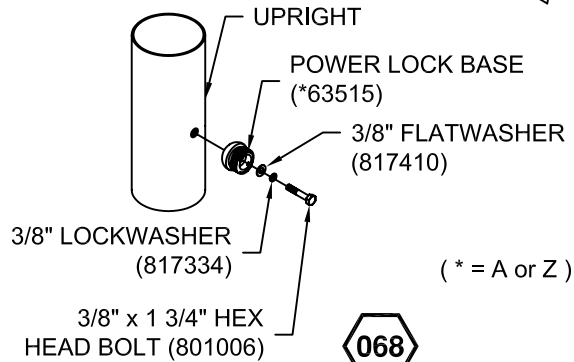
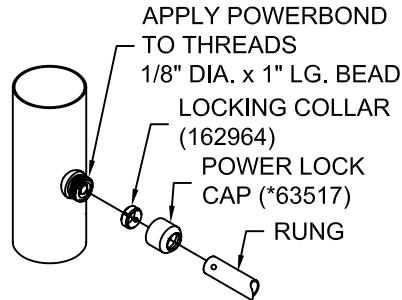
IMPORTANT

To REDUCE THE RISK OF CLOTHING ENTANGLEMENT IN COMPLIANCE WITH ASTM F1487, ANY BOLT END PROTRUDING MORE THAN TWO FULL THREADS BEYOND THE FACE OF THE NUT SHALL BE CUT-OFF FLUSH, FILED SMOOTH AND TREATED TO PREVENT CORROSION.

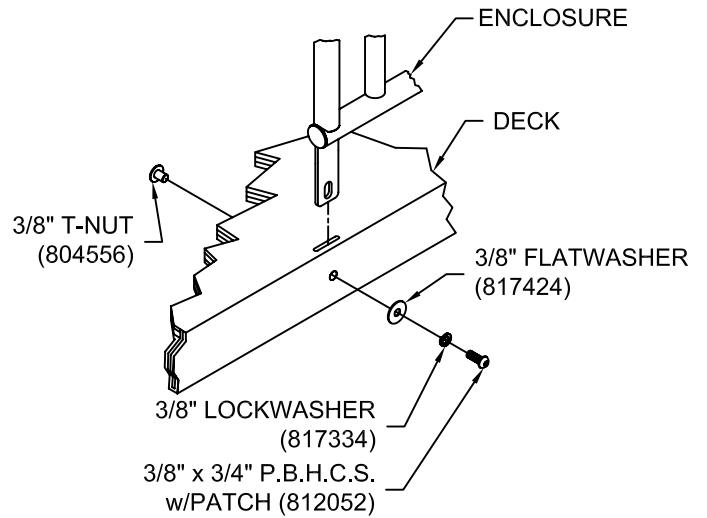
NOTE: AFTER ASSEMBLY IS COMPLETE, PEEN TEE-NUTS AND FLATWASHERS TO MATCH RADIUS OF PIPE.



***NOTE:**
HEX BOLTS SHOULD
BE TORQUED
FROM 20-25 FT. LBS.
FOR PROPER
INSTALLATION.





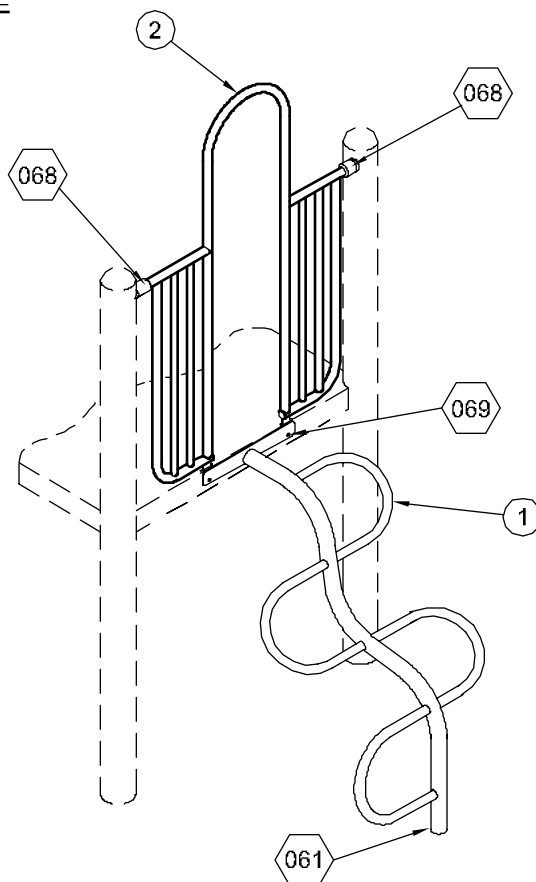
(* = A or Z)



80365

WAVY TREE CLIMBER

 = INSTALLATION
DETAIL
 = PARTS LIST
REFERENCE



ASSEMBLY DRAWING

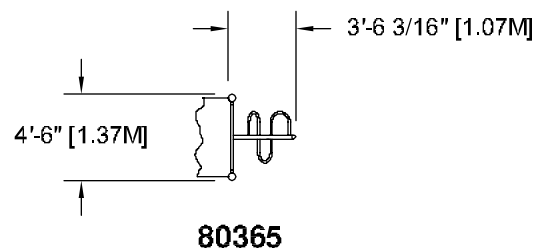
INSTALLATION INSTRUCTIONS

1. Before assembling this equipment, read the enclosed INSTALLATION INSTRUCTIONS in the installation booklet; follow all the instructions during installation.
2. Assemble parts as shown in the ASSEMBLY DRAWING. Refer to the assembly details for the specific hardware required in each connection.
3. Apply the PowerBond to the PowerLock threads as shown in detail 068.

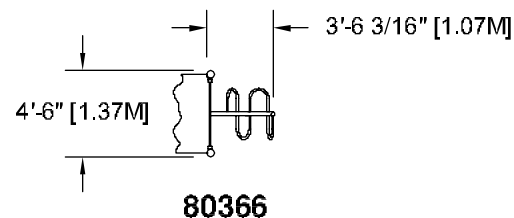
2'-6" & 3'-0" 80365

3'-6" & 4'-0" 80366

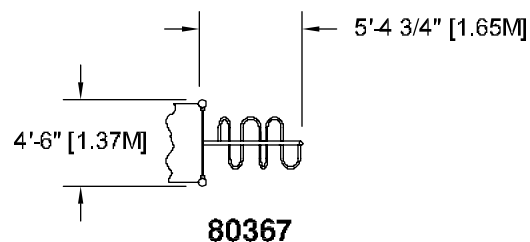
4'-6" & 5'-0" 80367



80365



80366

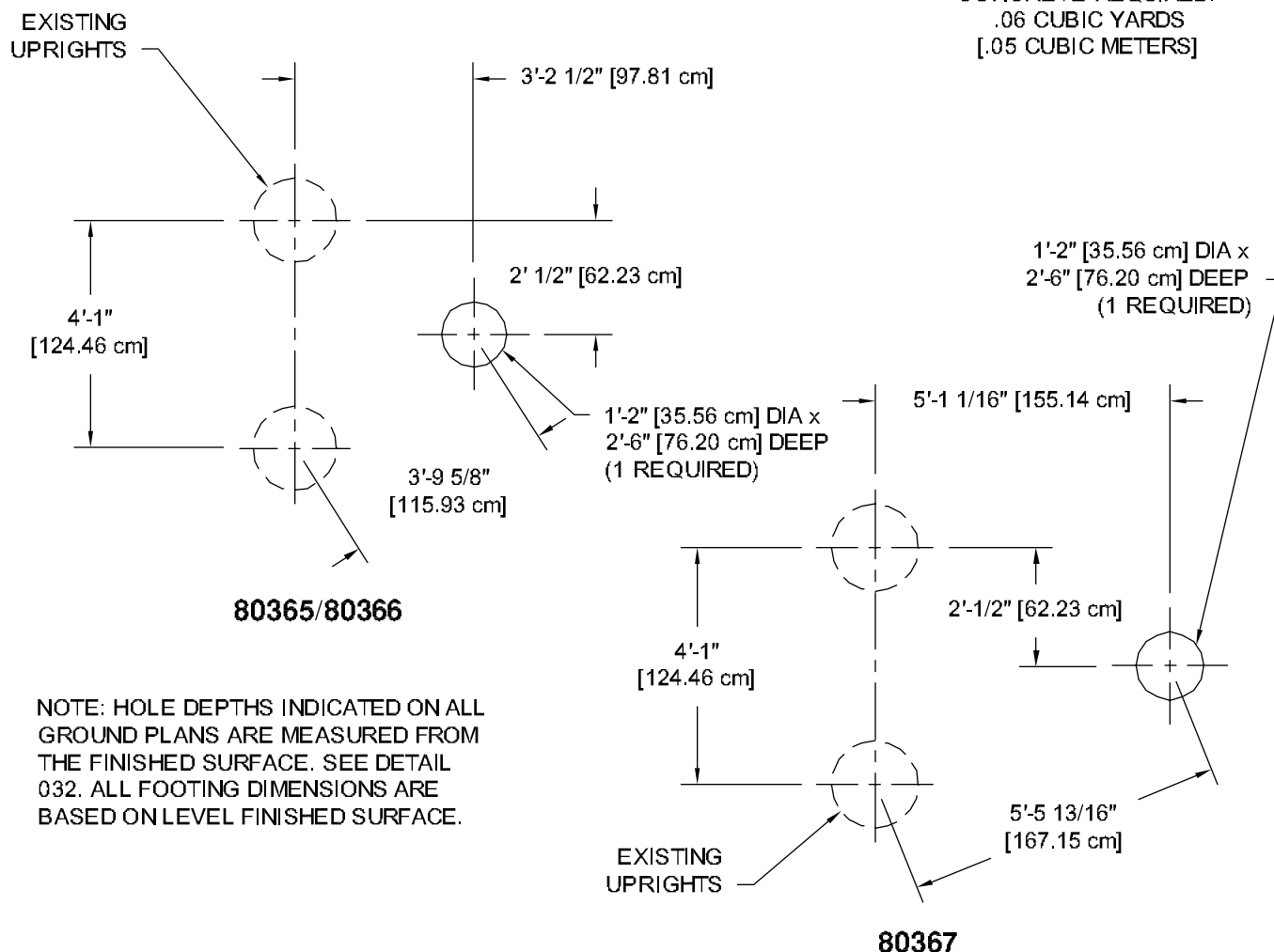


80367

TOP VIEWS

GROUND PLANS

CONCRETE REQUIRED:
.06 CUBIC YARDS
[.05 CUBIC METERS]



PARTS LIST

REF NO.	DESCRIPTION	NO. REQUIRED			PART NUMBER
		80365	80366	80367	
1	Wavy Tree Climber 2'-6" & 3'	1	0	0	157563
1	Wavy Tree Climber 3'-6" & 4'	0	1	0	157566
1	Wavy Tree Climber 4'-6" & 5'	0	0	1	157569
2	Arch Enclosure Ass'y.	1	1	1	163420
	Hardware Complete	1	1	1	164078
	Ground Extension	1	1	1	151080*
	Power Lock Cap	2	2	2	Z63517*
	Locking Collar	2	2	2	162964*
	Power Lock Base	2	2	2	Z63515*
	3/8" x 1 3/4" Hex Head Bolt	2	2	2	801006*
	3/8" Lock Washer	5	5	5	817334*
	3/8" x 3/4" P.B.H.C.S. w/Patch	2	2	2	812052*
	3/8" Tee Nut	2	2	2	804556*
	3/8" Flatwasher	2	2	2	817410*
	3/8" x 3 1/2" Hex Head Bolt	1	1	1	801013*
	3/8" Hex Nut	1	1	1	804053*

*Unless Otherwise Specified, All Units of Measure are Each
* Included in Hardware*

**Warning: During Installation, Hardware And Small Parts Are Choking Hazards
For Young Children. Store Unused Parts Appropriately Until Assembly Is Completed.
Once Assembly Is Completed, Remove Any Unused Parts From The Play Environment
And Dispose/Save Them In A Secure Location.**

NOTE: AFTER ASSEMBLY IS COMPLETE, PEEN TEE-NUTS AND FLATWASHERS TO MATCH RADIUS OF PIPE.

DETAILS -for- 80365, 80366 & 80367

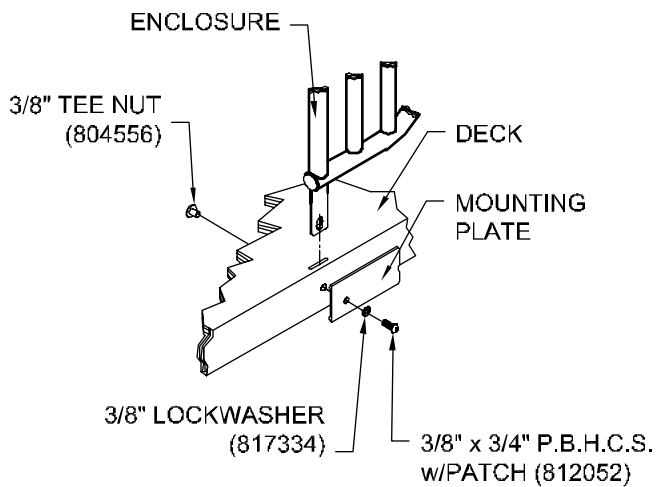
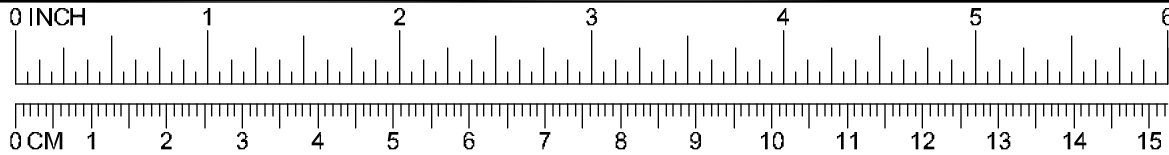
IMPORTANT

To Reduce the Risk of Clothing Entanglement in Compliance with ASTM F1487, Any Bolt End Protruding More Than Two Full Threads Beyond the Face of the Nut Shall Be Cut-Off Flush, Filed

Smooth and Treated to Prevent Corrosion.



NOTE: LOCTITE (SUPPLIED BY OTHERS) SHOULD BE USED ON ALL THREADED HARDWARE.

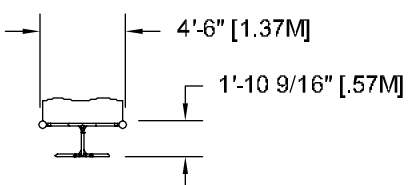
NOTE: AFTER ASSEMBLY IS COMPLETE, PEEN TEE-NUTS AND FLATWASHERS TO MATCH RADIUS OF PIPE.



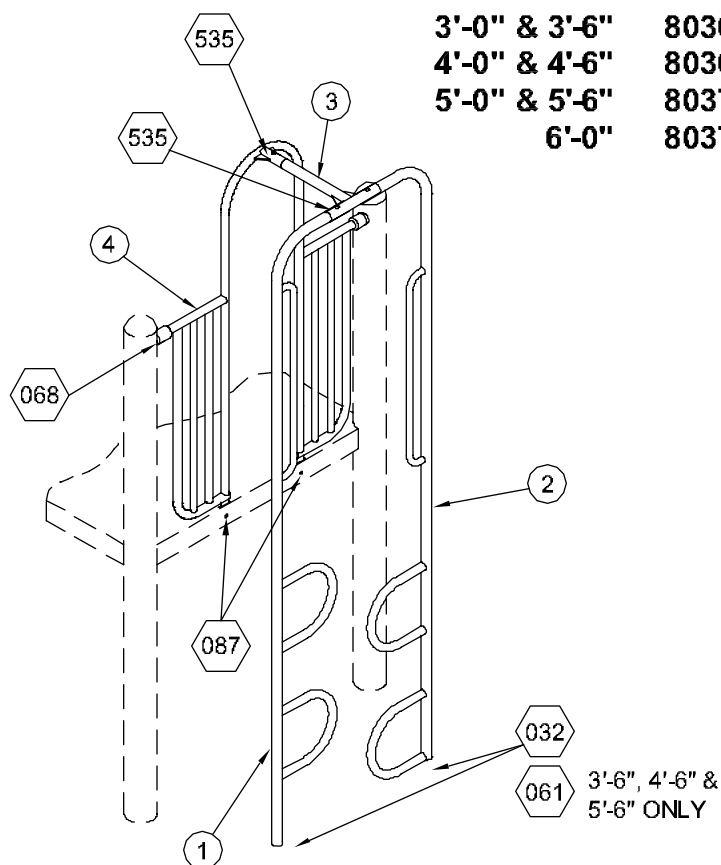
80368

ZIPPER CLIMBER

-  = INSTALLATION
DETAIL
-  = PARTS LIST
REFERENCE

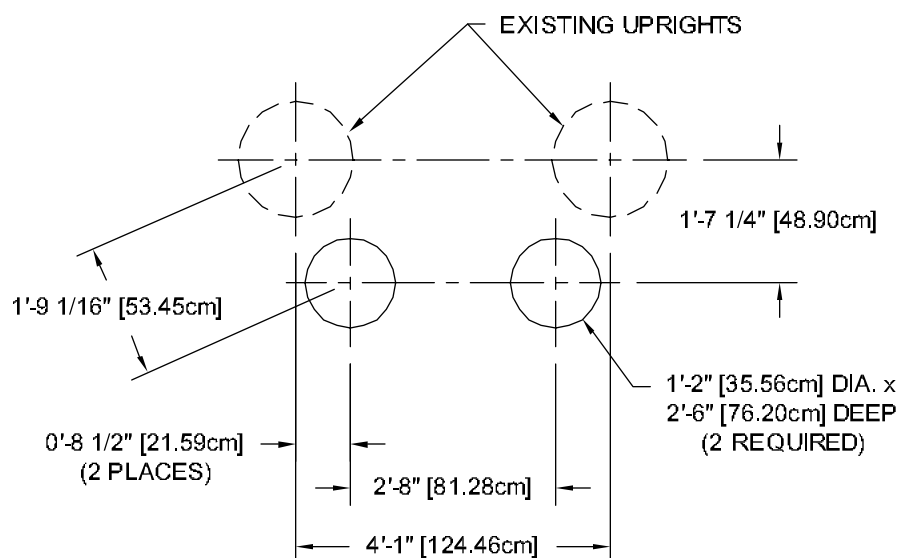


TOP VIEW



ASSEMBLY DRAWING

80369 SHOWN
OTHERS SIMILAR



GROUND PLAN

**NOTE: HOLE DEPTHS
INDICATED ON ALL GROUND
PLANS ARE MEASURED FROM
THE FINISHED SURFACE. SEE
DETAIL 032. ALL FOOTING
DIMENSIONS ARE BASED ON
LEVEL FINISHED SURFACE.**

CONCRETE REQUIRED:
.12 CUBIC YARDS
[.09 CUBIC METERS]

INSTALLATION

INSTRUCTIONS

1. Before assembling this equipment, read the enclosed INSTALLATION INSTRUCTIONS in the installation booklet; follow all the instructions during installation.
2. Assemble parts as shown in the ASSEMBLY DRAWING. Refer to the assembly details for the specific hardware required in each connection.
3. Apply the PowerBond to the PowerLock threads as shown in detail 068.

PARTS LIST

REF. NO.	DESCRIPTION	NUMBER REQUIRED				PART NUMBER
		80368	80369	80370	80371	
1	Left Zipper Climber Ass'y (3' & 3'-6")	1	0	0	0	179980
1	Left Zipper Climber Ass'y (4' & 4'-6")	0	1	0	0	179983
1	Left Zipper Climber Ass'y (5' & 3'-6")	0	0	1	0	179986
1	Left Zipper Climber Ass'y (6')	0	0	0	1	179989
2	Right Zipper Climber Ass'y (3' & 3'-6")	1	0	0	0	179991
2	Right Zipper Climber Ass'y (4' & 4'-6")	0	1	0	0	179993
2	Right Zipper Climber Ass'y (5' & 3'-6")	0	0	1	0	179995
2	Right Zipper Climber Ass'y (6')	0	0	0	1	179997
3	Mounting Tee Ass'y.	1	1	1	1	198000
4	Arch Enclosure Ass'y	1	1	1	1	178909
	Hardware Complete	1	1	1	0	179091
	Hardware Complete	0	0	0	1	179092
	Power Lock Base	2	2	2	2	Z63515*
	Locking Collar	2	2	2	2	162964*
	Power Lock Cap	2	2	2	2	Z63517*
	3/8" x 1 3/4" Hex Head Bolt	2	2	2	2	801006*
	3/8" x 3/4" P.B.H.C.S. w/Patch	2	2	2	2	812052*
	3/8" x 1-1/2" P.B.H.C.S. w/Patch	3	3	3	3	812053*
	3/8" Lockwasher	6	6	6	4	817334*
	3/8" Tee Nut (Spanner)	2	2	2	2	804556*
	3/8" x 2-1/2" Hex Bolt	2	2	2	0	801009*
	3/8" Hex Nut	2	2	2	0	804053*
	3/8" Barrel Nut	3	3	3	3	804804*
	3/8" Flatwasher	5	5	5	5	817410*
	3/8" Flatwasher (1 1/4" O.D.)	2	2	2	2	817424*
	Extension Leg	2	2	2	0	152110*

*Unless Otherwise Specified, All Units of Measure are Each
* Included in Hardware*

**Warning: During Installation, Hardware And Small Parts Are Choking Hazards
For Young Children. Store Unused Parts Appropriately Until Assembly Is Completed.
Once Assembly Is Completed, Remove Any Unused Parts From The Play Environment
And Dispose/Save Them In A Secure Location.**