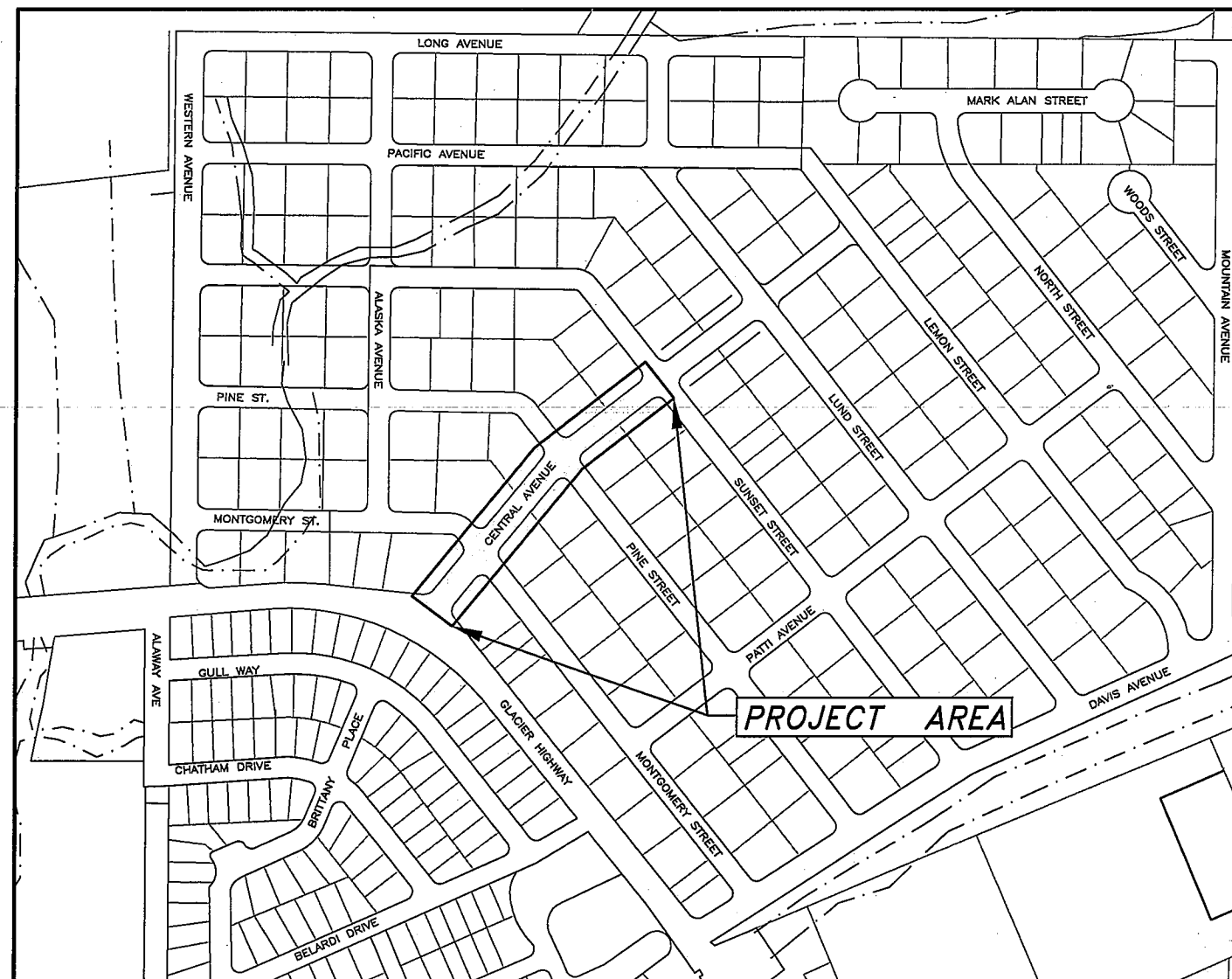


# CENTRAL AVENUE SIDEWALK

## CONTRACT NO. E11-270

### INDEX

DESCRIPTION	SHEET NO.
COVER SHEET	1 OF 8
LEGEND, ABBREVIATIONS AND GENERAL NOTES	2 OF 8
TYPICAL SECTION AND DETAILS	3 OF 8
DETAILS	4 OF 8
PLAN - CENTRAL AVENUE B.O.P. TO STA 12+60	5 OF 8
PLAN - CENTRAL AVENUE STA 12+60 TO 15+40	6 OF 8
PLAN - CENTRAL AVENUE STA 15+40 TO 18+35	7 OF 8
PLAN - CENTRAL AVENUE STA 18+35 TO E.O.P.	8 OF 8



CITY AND BOROUGH OF JUNEAU  
★ ALASKA'S CAPITAL CITY

ENGINEERING DEPARTMENT

APPROVED BY	SHEET NO.
DIRECTOR OF PUBLIC WORKS	1 of 8
SIGNATURE	DATE
CHIEF OF ENGINEER	DATE
SIGNATURE	DATE

LEGEND

DESCRIPTION	EXISTING	REMOVE	PROPOSED
BURIED ELECTRICAL UTILITIES			
CABLE TV	⊙		
POWER	⊕		
TELEPHONE	⊗		
CATCH BASIN	▣	▣	▣
CURB & GUTTER			▬▬▬▬▬▬
DETECTABLE WARNING TILE			▭
DRAINAGE SWALE OR DITCH	▬▬▬▬▬▬	▬▬▬▬▬▬	▬▬▬▬▬▬
FIRE HYDRANT	⊙		
PROJECT CENTERLINE			▬▬▬▬▬▬
PROPERTY LINE	▬▬▬▬▬▬		
POWER POLE	⊙		
SANITARY SEWER	▬▬▬▬▬▬	▬▬▬▬▬▬	▬▬▬▬▬▬
SANITARY SEWER MANHOLE	⊙		
STORM DRAIN	▬▬▬▬▬▬	▬▬▬▬▬▬	▬▬▬▬▬▬ S-1
SURVEY MONUMENT	⊙		
WATER LINE	▬▬▬▬▬▬		
WATER VALVE BOX	⊗		

ABBREVIATIONS

AC	ASPHALT PAVMENT
CB	CATCH BASIN
CMP	CORRUGATED METAL PIPE
CPP	CORRUGATED POLYETHYLENE PIPE
CONC	CONCRETE
CTE	CONNECT TO EXISTING
DI	DUCTILE IRON
DIA	DIAMETER
DT	DITCH
FG	FINISHED GRADE
INV	INVERT
LG	LIP OF GUTTER
LT	LEFT
MH	MANHOLE
NTS	NOT TO SCALE
PVC	POLYVINYL CHLORIDE PIPE
RT	RIGHT
SHLD	SHOULDER
STA	STATION
STD	STANDARD
TBC	TOP BACK CURB
TP	TOP OF PAVEMENT
TSW	TOP OF SIDEWALK
ABBREVIATIONS TO BE USED WITHOUT PERIODS	

GENERAL NOTES

1. LARGE BOULDERS, STUMPS, LOGS, ORGANICS AND GROUND WATER MAY BE ENCOUNTERED AT VARIOUS DEPTHS DURING EXCAVATION OPERATIONS.
2. CONTRACTOR SHALL ASSURE GARBAGE PICKUP AND DAILY MAIL SERVICE WILL BE UNINTERRUPTED TO ALL RESIDENCES AFFECTED BY THIS PROJECT.
3. CBJ ENGINEERING STANDARD DETAILS BOOK DATED APRIL, 2000 IS MADE PART OF THIS CONTRACT, WITH CURRENT REVISIONS AS APPLICABLE.
4. EXISTING PIPE LOCATIONS ARE DERIVED FROM CBJ AS-BUILTS OR FIELD LOCATED. ACTUAL LOCATIONS MAY VARY FROM THOSE SHOWN. DEPTH OF THE EXISTING PIPES SHOWN ON THE ELEVATIONS ARE ASSUMED. CONTRACTOR SHALL FIELD VERIFY THE LOCATION OF EACH EXISTING SERVICE PIPE PRIOR TO INSTALLING THE RESPECTIVE SEWER, WATER OR STORM MAIN. DIAL BEFORE YOU DIG 586-1333.
5. GRADING AND ALIGNMENT ARE SUBJECT TO MINOR REVISIONS BY THE ENGINEER.
6. LOCATION OF STORM CURB INLETS, PIPING AND PIPE LENGTHS ARE SUBJECT TO MINOR REVISIONS BY THE ENGINEER.
7. PROPERTY LINE LOCATIONS USED IN THESE PLANS ARE DERIVED FROM RECORD PLATS AND DO NOT REPRESENT BOUNDARY SURVEY. EXISTING RECORD PLATS DO NOT CLOSE WITH EACH OTHER IN SOME CASES. THE PROPERTY LINES SHOWN ON THESE PLANS ARE A BEST FIT APPROXIMATION OF CLOSURE.
8. ALL ITEMS DESIGNATED TO BE REMOVED SHALL BE DISPOSED OF AT AN APPROVED DISPOSAL SITE, EXCEPT AS NOTED IN THE CONTRACT DOCUMENTS.
9. CONTRACTOR SHALL REFERENCE ALL EXISTING PROPERTY CORNER MONUMENTS (I.E. REBARS, CONCRETE NAILS, BRASS CAP MONUMENT AND ETC.) PRIOR TO CONSTRUCTION AND REMONUMENT AFTER SURFACING IS REPLACED. ALL WORK SHALL BE DONE BY, OR UNDER THE DIRECTION OF, AN ALASKA REGISTERED LAND SURVEYOR.
10. ALL ASPHALT PAVEMENT TO BE REMOVED AND DISPOSED OF SHALL BE DELIVERED TO A STOCKPILE AREA AT THE LEMON CREEK CITY PIT TO BE DESIGNATED BY THE ENGINEER. CONTACT THE ENGINEER FOR THE EXACT LOCATION OF THE STOCKPILE.
11. THE PLAN SHEETS DO NOT SHOW MOST OF THE TREES AND OTHER VEGETATION THAT WILL BE ENCOUNTERED DURING CONSTRUCTION ACTIVITIES. NO TREES OR OTHER VEGETATION ARE TO BE REMOVED OR DAMAGED, UNLESS SHOWN ON THE DRAWINGS OR DIRECTED BY THE ENGINEER.
12. THE CONTRACTOR SHALL NOT STORE MATERIALS OR EQUIPMENT, OR OPERATIVE EQUIPMENT WITH ITS TRACKS OR WHEELS PLACED ON PRIVATE PROPERTY, WITHOUT WRITTEN APPROVAL OF THE PROPERTY OWNER.

PROJECT TBM TABLE

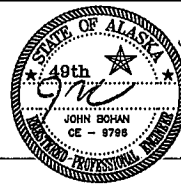
S.E. BOLT OF FIRE HYDRANT AT LUND/CENTRAL	ELEV = 35.80
E. BOLT OF FIRE HYDRANT AT SUNSET/CENTRAL	ELEV = 33.64
S.E. BOLT OF FIRE HYDRANT AT PINE/CENTRAL	ELEV = 30.75
W. BOLT OF FIRE HYDRANT AT MONTGOMERY/CENTRAL	ELEV = 29.80

EARTHWORK QUANTITIES

DITCH EXCAVATION BEHIND SIDEWALK (PAY ITEM 2202.2)	102.0 CY
DITCH FILL BEHIND SIDEWALK (PAY ITEM 2202.2)	117.0 CY
ROADWAY EXCAVATION (PAY ITEM 2202.1)	682.0 CY
ROADWAY FILL (TO BOTTOM OF BASE COURSE) (PAY ITEM 2202.1)	30.0 CY
SIDEWALK AND CURB AND GUTTER BASE COURSE (PAY ITEM 2202.1)	107.0 CY

Revisions

Date	Description	Intls.



Prepared by:  
CITY AND BOROUGH OF JUNEAU  
★ ALASKA'S CAPITAL CITY  
ENGINEERING DEPARTMENT

CENTRAL AVENUE SIDEWALK  
CONTRACT NO. E11-270

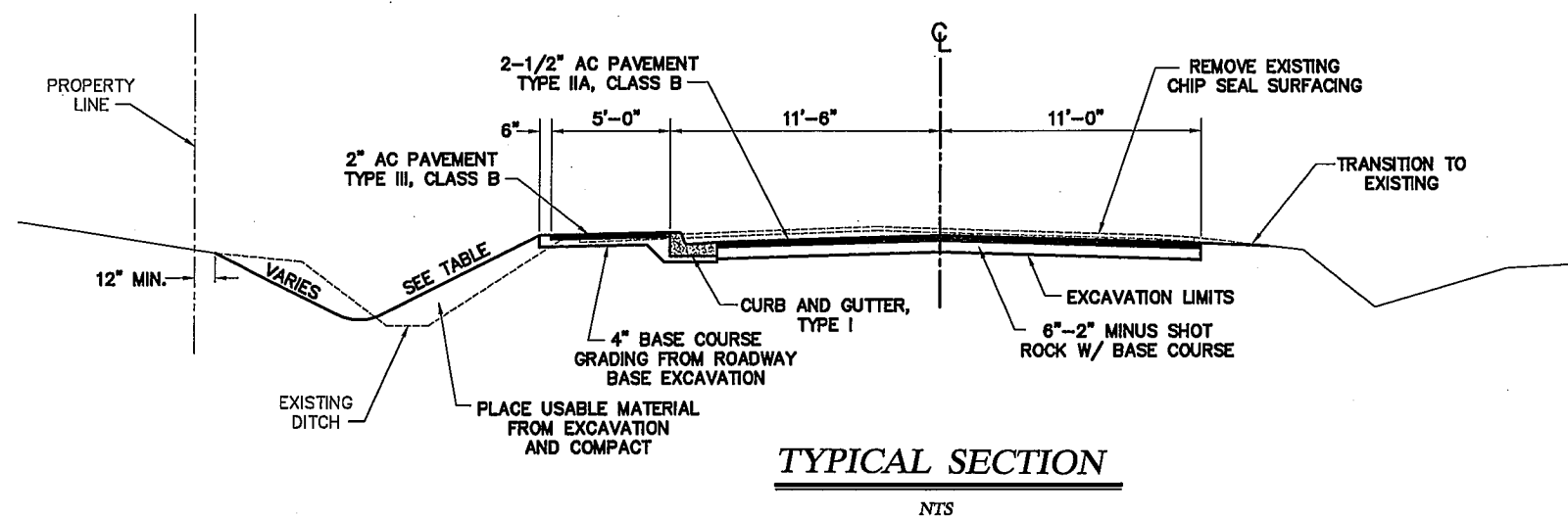
LEGEND, ABBREVIATIONS  
AND GENERAL NOTES

DATE: 4/15/11      DRAWN BY: STAFF      SCALE: AS SHOWN

SHEET:

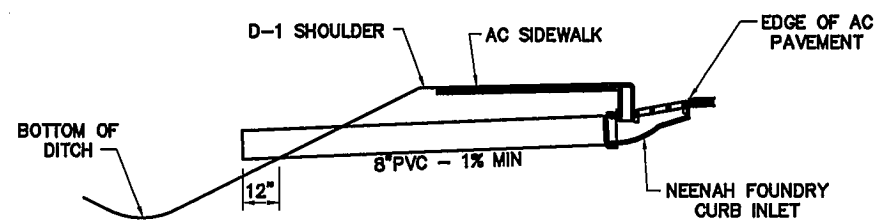
2 of 8

SLOPE GRADES	
1.5:1	2:1
10+75.00 TO 14+91.20 18+23.30 TO 19+55.00	15+31.80 TO 18+17.00 19+75.00 TO E.O.P.

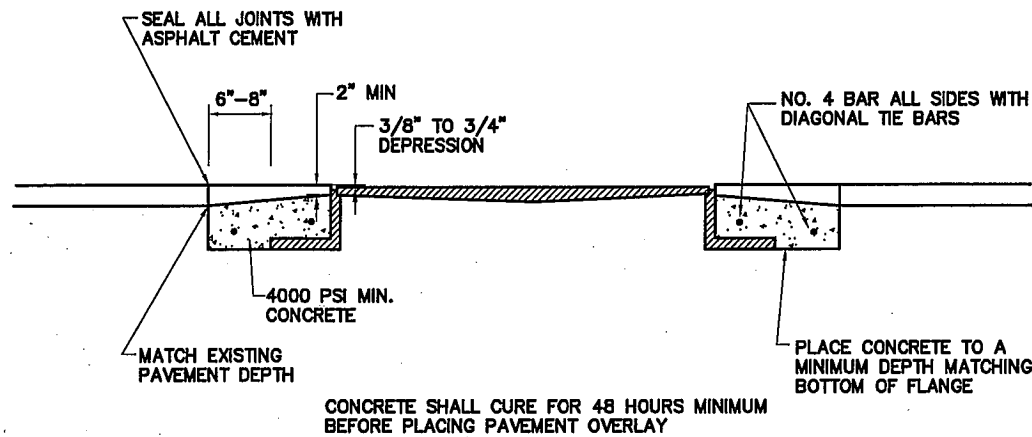


### TYPICAL SECTION NOTES

1. SIDE SLOPES VARY. SEE SLOPE TABLE ON THIS SHEET.
2. FILL AREAS BEYOND SUBCUT LIMITS SHALL BE BACKFILLED WITH SUITABLE MATERIAL FROM EXCAVATION.
3. CONTRACTOR SHALL USE EXCAVATED BASE MATERIAL FROM EXISTING ROADWAY AS FILL MATERIAL BELOW THE 2-INCH MINUS SHOT ROCK BASE COURSE IN THE ROADWAY AND AS THE BASE MATERIAL BELOW THE SIDEWALK AND CURB AND GUTTER.



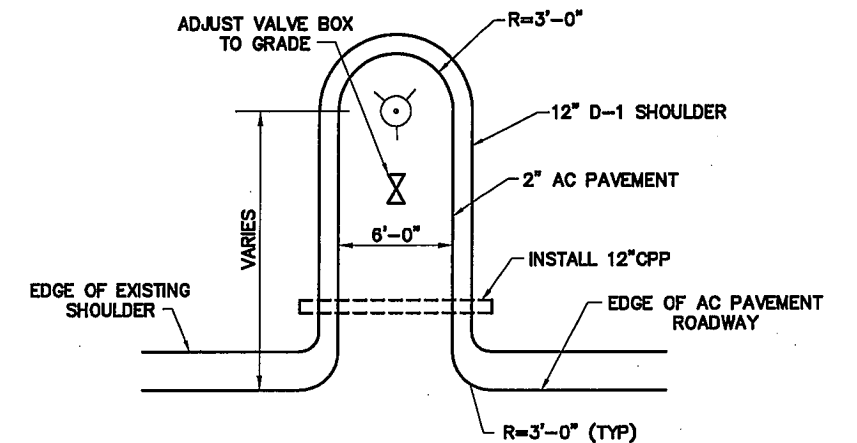
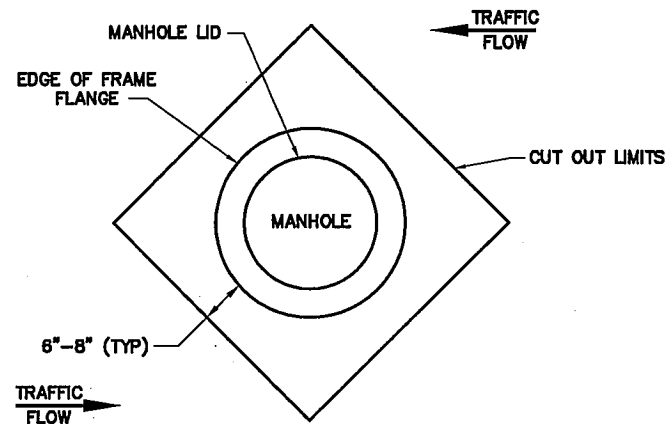
**CURB DRAIN DETAIL**  
NTS



### CONCRETE TRANSITION SLAB DETAILS

NTS

MANHOLE FRAME SHALL BE RAISED TO FINISH GRADE PRIOR TO PAVING OPERATIONS. IF NOT WITHIN ALLOWABLE TOLERANCES AFTER PAVING OPERATION THE ABOVE DETAILS SHALL BE USED. TO BE COMPLETED AT CONTRACTORS EXPENSE.



CONSTRUCT HYDRANT ACCESS PAD WITH USABLE EXCAVATION AS NECESSARY, 4 INCHES BASE COURSE, GRADING D-1 AND 2" AC PAVEMENT.

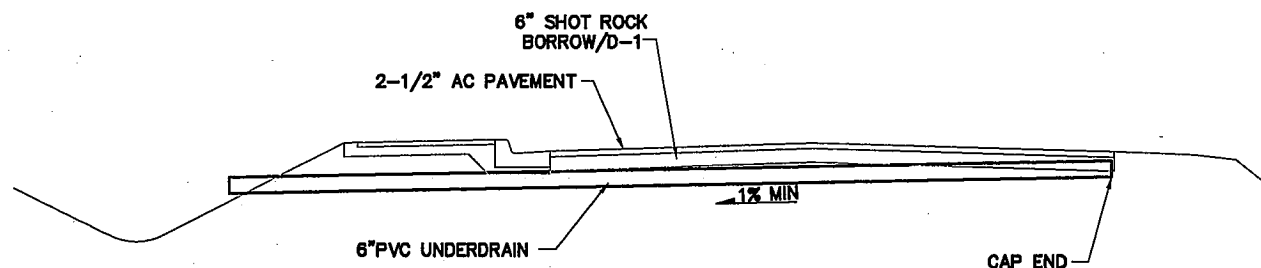
GUARD POSTS SHALL BE REUSED IN AREAS THEY EXIST. NEW GUARD POSTS ARE NOT REQUIRED WHERE THEY DO NOT CURRENTLY EXIST.

MAXIMUM ALLOWABLE GRADE IN ANY DIRECTION SHALL BE 2%.

CONTRACTORS ARE ENCOURAGED TO VISIT THE PROJECT SITE PRIOR TO BIDDING TO SEE THE EXTENT OF THE WORK FOR THE HYDRANT PADS.

### FIRE HYDRANT ACCESS PAD

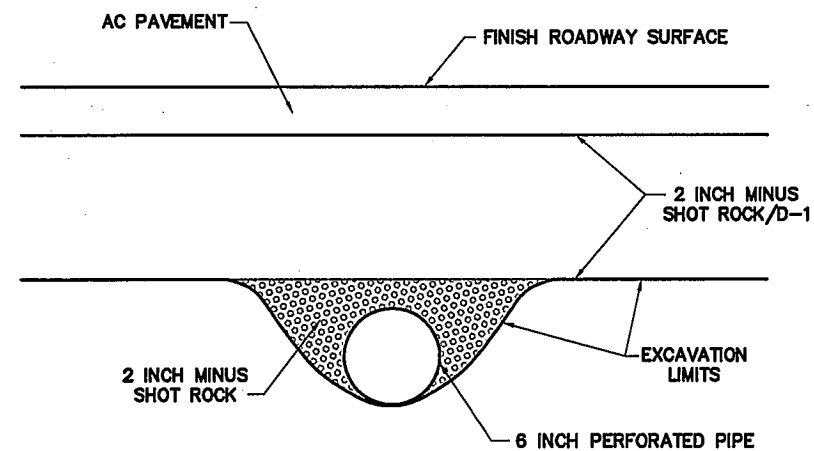
NTS



NOTE: 6" CPP UNDERDRAINS SHALL BE LOCATED AT APPROXIMATELY STA 11+00, 12+50, 15+50 AND 18+50 OR AS DIRECTED BY THE ENGINEER.

### 6 INCH CPP UNDERDRAIN

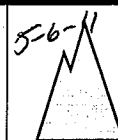
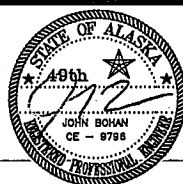
NTS



\*ADJUST DEPTH AS REQUIRED TO MAINTAIN 1% MINIMUM GRADIENT

### Revisions

Date	Description	Intls.



Prepared by:  
CITY AND BOROUGH OF JUNEAU  
★ ALASKA'S CAPITAL CITY  
ENGINEERING DEPARTMENT

CENTRAL AVENUE SIDEWALK  
CONTRACT NO. E11-270

DETAILS

DATE: 4/15/11

DRAWN BY: STAFF

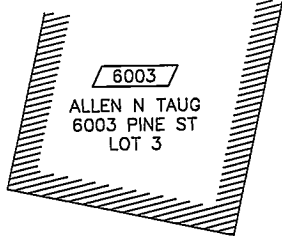
SCALE: AS SHOWN

SHEET:

4 of 8



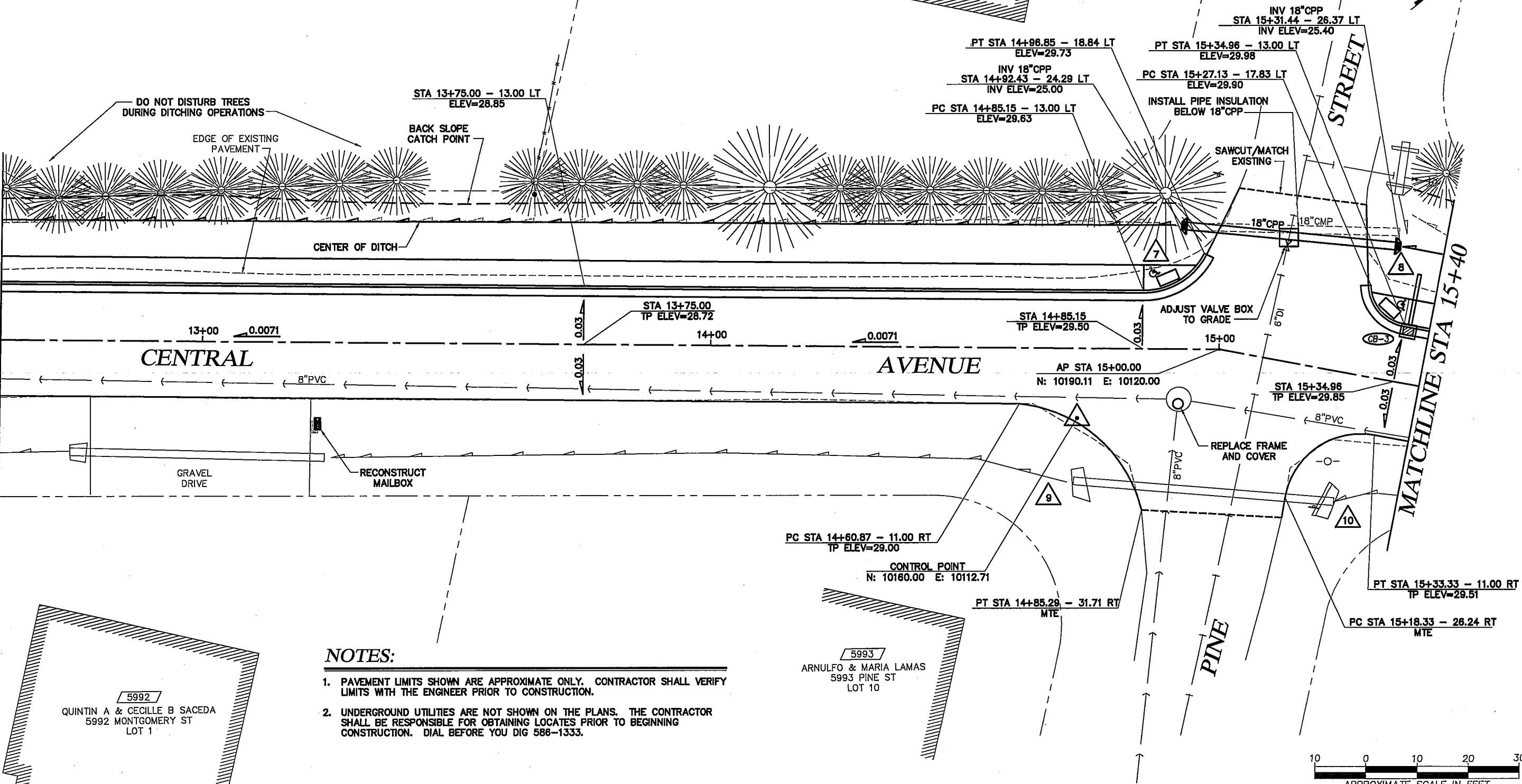
CURVE TABLE					
CURVE	LENGTH	DELTA	RADIUS	BEARING	DISTANCE
C7	14.56	64°10'51"	13.00	N 07°49'50" E	13.81
C8	10.88	77°55'15"	8.00	N 88°53'25" E	10.06
C9	34.10	69°57'09"	27.93	N 80°13'04" E	32.02
C10	23.81	90°55'57"	15.00	N 04°27'49" E	21.39



CB-3 CURB INLET	
STA 15+35.96, MATCH CURB	
FG 8" OUTLET	EL = 29.49
MIN 1% SLOPE ON 8" OUTLET	EL = 28.19

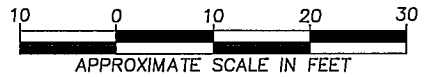
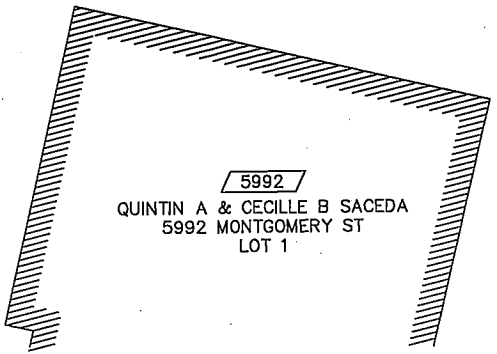
MATCHLINE STA 12+60

MATCHLINE STA 15+40



**NOTES:**

1. PAVEMENT LIMITS SHOWN ARE APPROXIMATE ONLY. CONTRACTOR SHALL VERIFY LIMITS WITH THE ENGINEER PRIOR TO CONSTRUCTION.
2. UNDERGROUND UTILITIES ARE NOT SHOWN ON THE PLANS. THE CONTRACTOR SHALL BE RESPONSIBLE FOR OBTAINING LOCATES PRIOR TO BEGINNING CONSTRUCTION. DIAL BEFORE YOU DIG 586-1333.



Revisions		
Date	Description	Intls.



Prepared by:  
CITY AND BOROUGH OF JUNEAU  
★ ALASKA'S CAPITAL CITY  
ENGINEERING DEPARTMENT

**CENTRAL AVENUE SIDEWALK**  
CONTRACT NO. E11-270

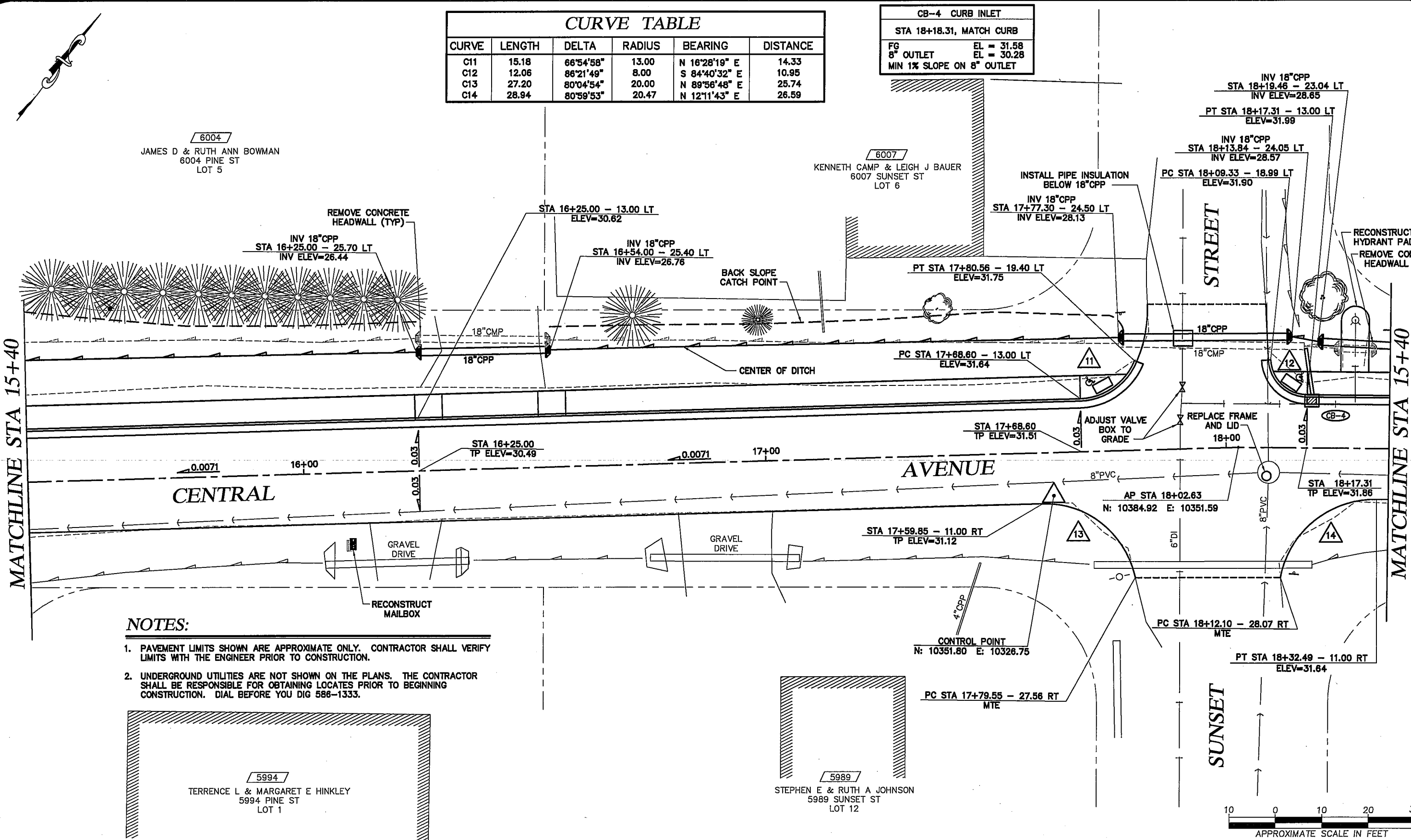
**PLAN - CENTRAL AVENUE**  
STA 12+60 TO STA 15+40

DATE: 4/15/11      DRAWN BY: STAFF      SCALE: AS SHOWN

SHEET:  
6 of 8

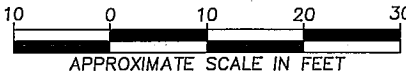
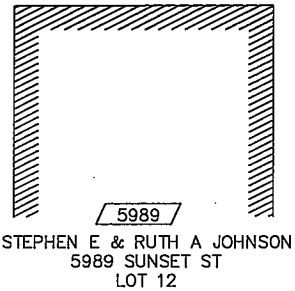
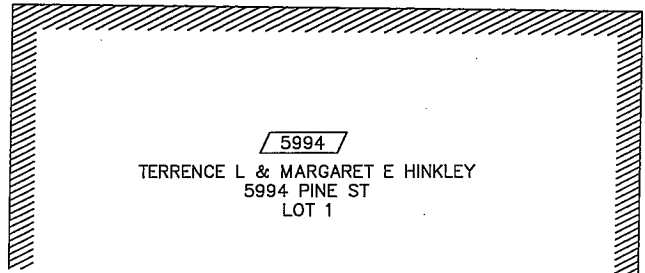
CURVE TABLE					
CURVE	LENGTH	DELTA	RADIUS	BEARING	DISTANCE
C11	15.18	66°54'58"	13.00	N 16°28'19" E	14.33
C12	12.06	86°21'49"	8.00	S 84°40'32" E	10.95
C13	27.20	80°04'54"	20.00	N 89°56'48" E	25.74
C14	28.94	80°59'53"	20.47	N 12°11'43" E	26.59

CB-4 CURB INLET	
STA 18+18.31, MATCH CURB	
FG	EL = 31.58
8" OUTLET	EL = 30.28
MIN 1% SLOPE ON 8" OUTLET	

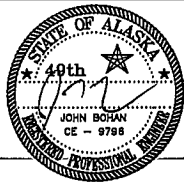


**NOTES:**

- PAVEMENT LIMITS SHOWN ARE APPROXIMATE ONLY. CONTRACTOR SHALL VERIFY LIMITS WITH THE ENGINEER PRIOR TO CONSTRUCTION.
- UNDERGROUND UTILITIES ARE NOT SHOWN ON THE PLANS. THE CONTRACTOR SHALL BE RESPONSIBLE FOR OBTAINING LOCATES PRIOR TO BEGINNING CONSTRUCTION. DIAL BEFORE YOU DIG 586-1333.



Revisions		
Date	Description	Intls.



Prepared by:  
CITY AND BOROUGH OF JUNEAU  
★ ALASKA'S CAPITAL CITY  
ENGINEERING DEPARTMENT

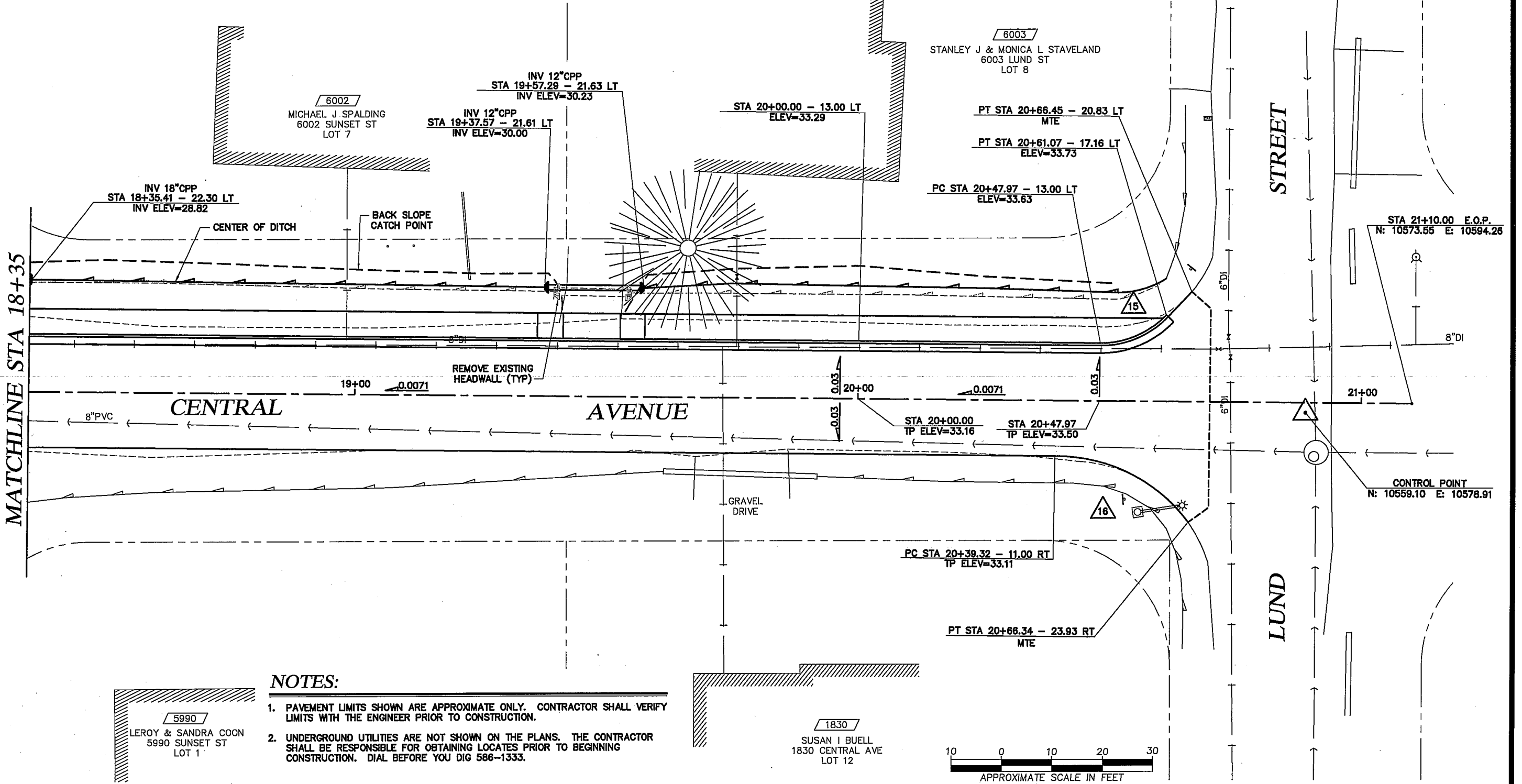
**CENTRAL AVENUE SIDEWALK**  
CONTRACT NO. E11-270

**PLAN - CENTRAL AVENUE**  
STA 15+40 TO STA 18+35

DATE: 4/15/11      DRAWN BY: STAFF      SCALE: AS SHOWN

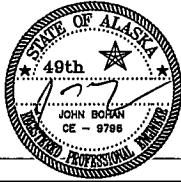
SHEET:  
7 of 8

CURVE TABLE					
CURVE	LENGTH	DELTA	RADIUS	BEARING	DISTANCE
C15	14.67	46°42'30"	18.00	N 28°47'18" E	28.59
C16	30.70	60°17'13"	33.10	N 78°02'13" E	29.61



- NOTES:**
- PAVEMENT LIMITS SHOWN ARE APPROXIMATE ONLY. CONTRACTOR SHALL VERIFY LIMITS WITH THE ENGINEER PRIOR TO CONSTRUCTION.
  - UNDERGROUND UTILITIES ARE NOT SHOWN ON THE PLANS. THE CONTRACTOR SHALL BE RESPONSIBLE FOR OBTAINING LOCATES PRIOR TO BEGINNING CONSTRUCTION. DIAL BEFORE YOU DIG 586-1333.

Revisions		
Date	Description	Intls.



Prepared by:  
 CITY AND BOROUGH OF JUNEAU  
 ★ ALASKA'S CAPITAL CITY  
 ENGINEERING DEPARTMENT

**CENTRAL AVENUE SIDEWALK**  
 CONTRACT NO. E11-270

**PLAN - CENTRAL AVENUE**  
**STA 18+35 TO E.O.P.**  
 DATE: 4/15/11 DRAWN BY: STAFF SCALE: AS SHOWN

SHEET:  
 8 of 8