

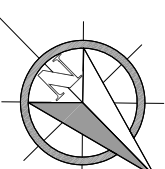
NOTES:

1. REMOVE 3 MAPLE TREES FOR REPLANTING. CUT ROOT BALL 18" DEEP AND 5' DIAMETER. KEEP SOIL ON ROOTS AND STOCKPILE TREES. SEE LANDSCAPE SHEETS FOR FURTHER DETAILS.
2. REMOVE AND REPLACE CONCRETE CURB AND GUTTER & ACP SURFACING ON I-STREET TO MATCH EXISTING CONDITIONS IN CONJUNCTION W/WATER AND SEWER UTILITIES REPLACEMENT.
3. DEMOLITION OF COLLAPSED STORMDRAIN LENGTH MAY VARY. ADJUST STORMDRAIN DEMOLITION LENGTHS AND LIMITS AS REQ'D IN FIELD.

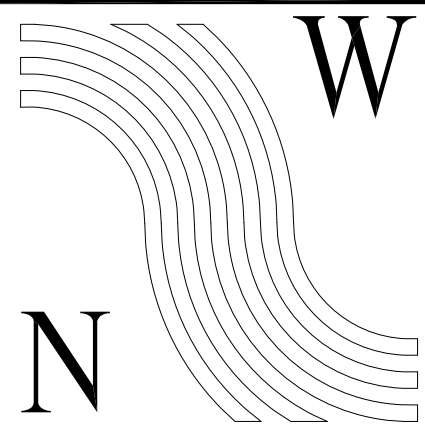
1

SITE DEMOLITION PLAN
ADDITIVE ALTERNATE

SCALE IN FEET
0 30 60 FT.



DIAL BEFORE YOU DIG!
586-1333
UNDERGROUND POWER, TELEPHONE, T.V., WATER
HERE DO NOT SUBSTITUTE FOR FIELD LOCATES.
AND SEWER LINES ARE IN THE AREA. UTILITIES SHOWN



**NorthWind
Architects LLC**

119A 2ND ST.
JUNEAU, AK 99801
PH #907.586.6150
FX #907.586.6181
WWW.NORTHWINDARCH.COM

P N D
ENGINEERS, INC.
9360 Glacier Highway, Ste 100
Juneau, Alaska 99801
Phone: 907.586.2093
Fax: 907.586.2099
PND # 092078

GASTINEAU ELEMENTARY SCHOOL

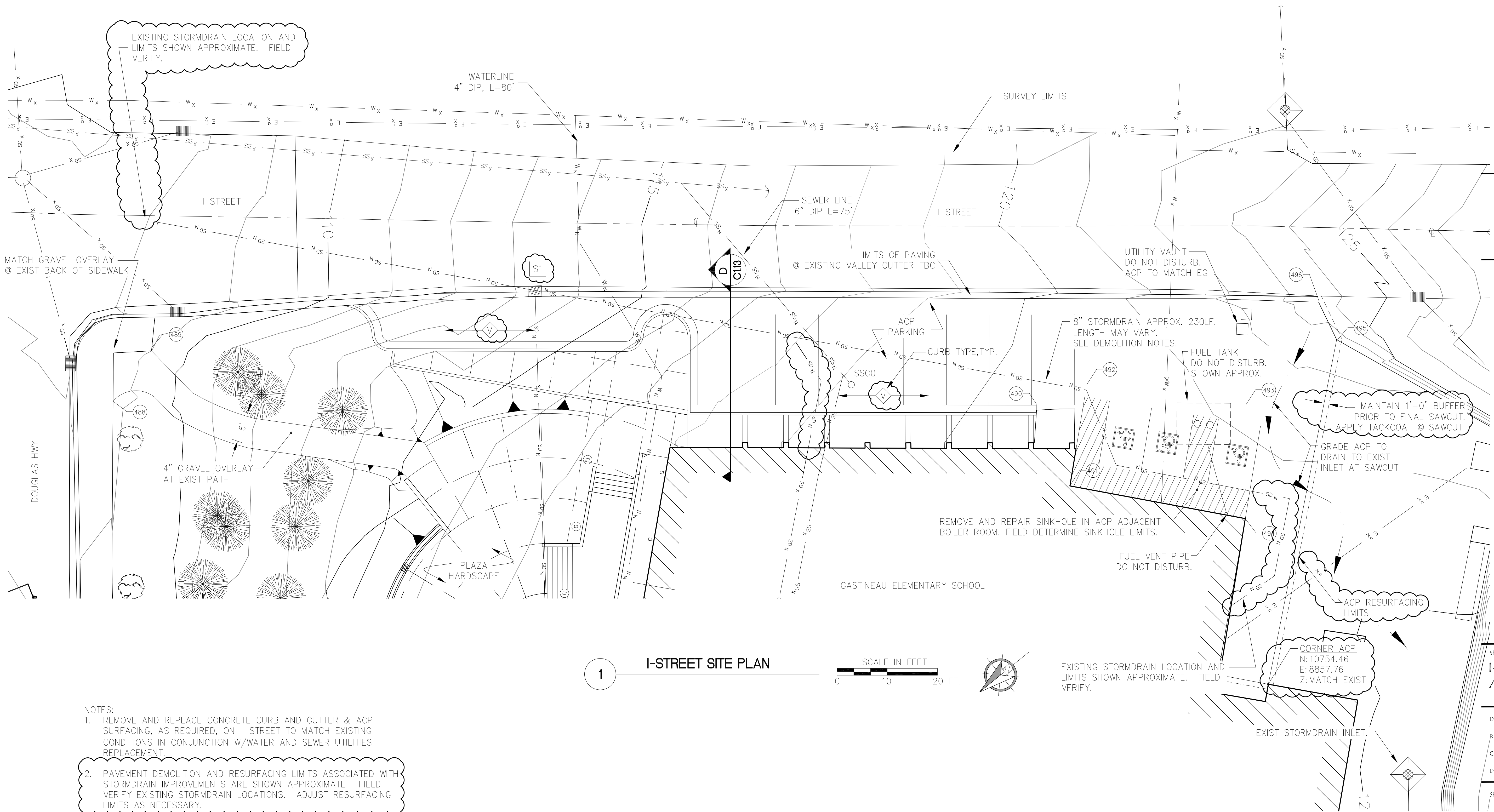
RENOVATION

CBJ Contract No. E11-137
JUNEAU, ALASKA

SHEET TITLE:
SITE DEMOLITION
ADD. ALTERNATE

DATE: DEC. 15, 2010
REVISION:
CHECKED BY: CMG
DRAWN: NAM

SHEET #
C1.3



1 I-STREET SITE PLAN

SCALE IN FEET
0 10 20 FT.

- NOTES:
1. REMOVE AND REPLACE CONCRETE CURB AND GUTTER & ACP SURFACING, AS REQUIRED, ON I-STREET TO MATCH EXISTING CONDITIONS IN CONJUNCTION W/WATER AND SEWER UTILITIES REPLACEMENT.
 2. PAVEMENT DEMOLITION AND RESURFACING LIMITS ASSOCIATED WITH STORMDRAIN IMPROVEMENTS ARE SHOWN APPROXIMATE. FIELD VERIFY EXISTING STORMDRAIN LOCATIONS. ADJUST RESURFACING LIMITS AS NECESSARY.

NorthWind Architects LLC

119A 2ND ST.
JUNEAU, AK 99801
PH #907.586.6150
FX #907.586.6181
WWW.NORTHWINDARCH.COM

P N D
ENGINEERS, INC.

9360 Glacier Highway, Ste 100
Juneau, Alaska 99801
Phone: 907.586.2093
Fax: 907.586.2099
PND # 092078

GASTINEAU ELEMENTARY SCHOOL

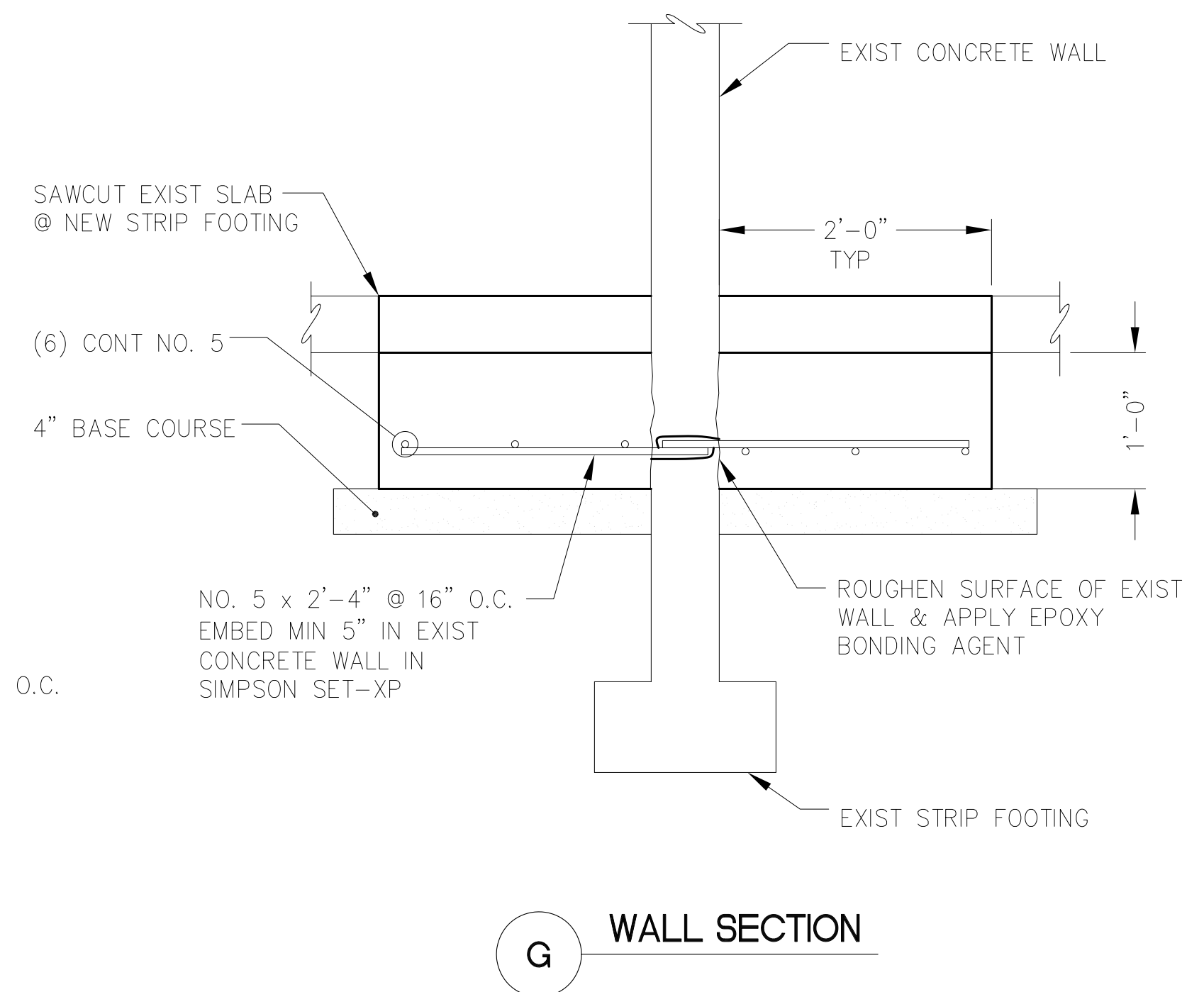
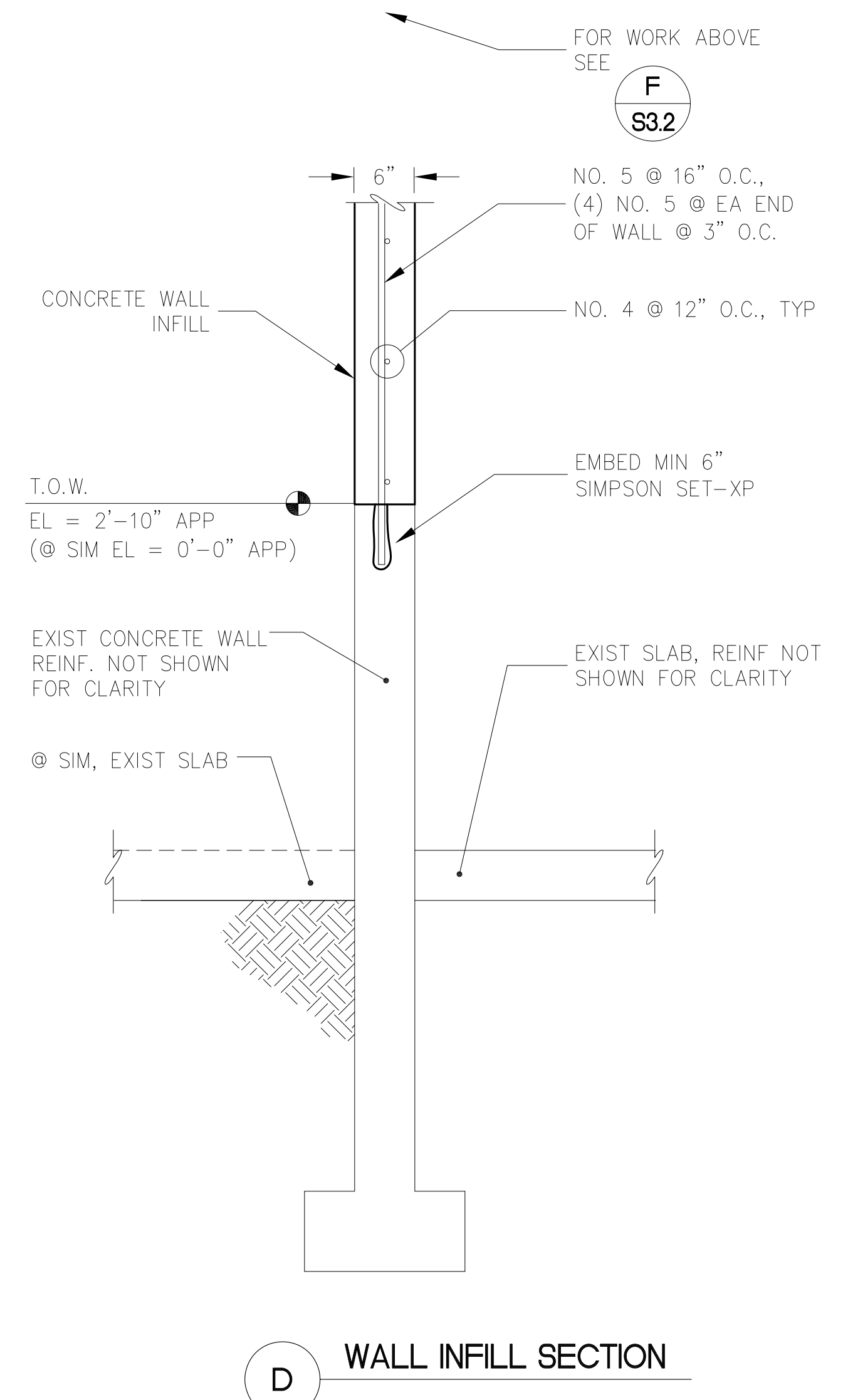
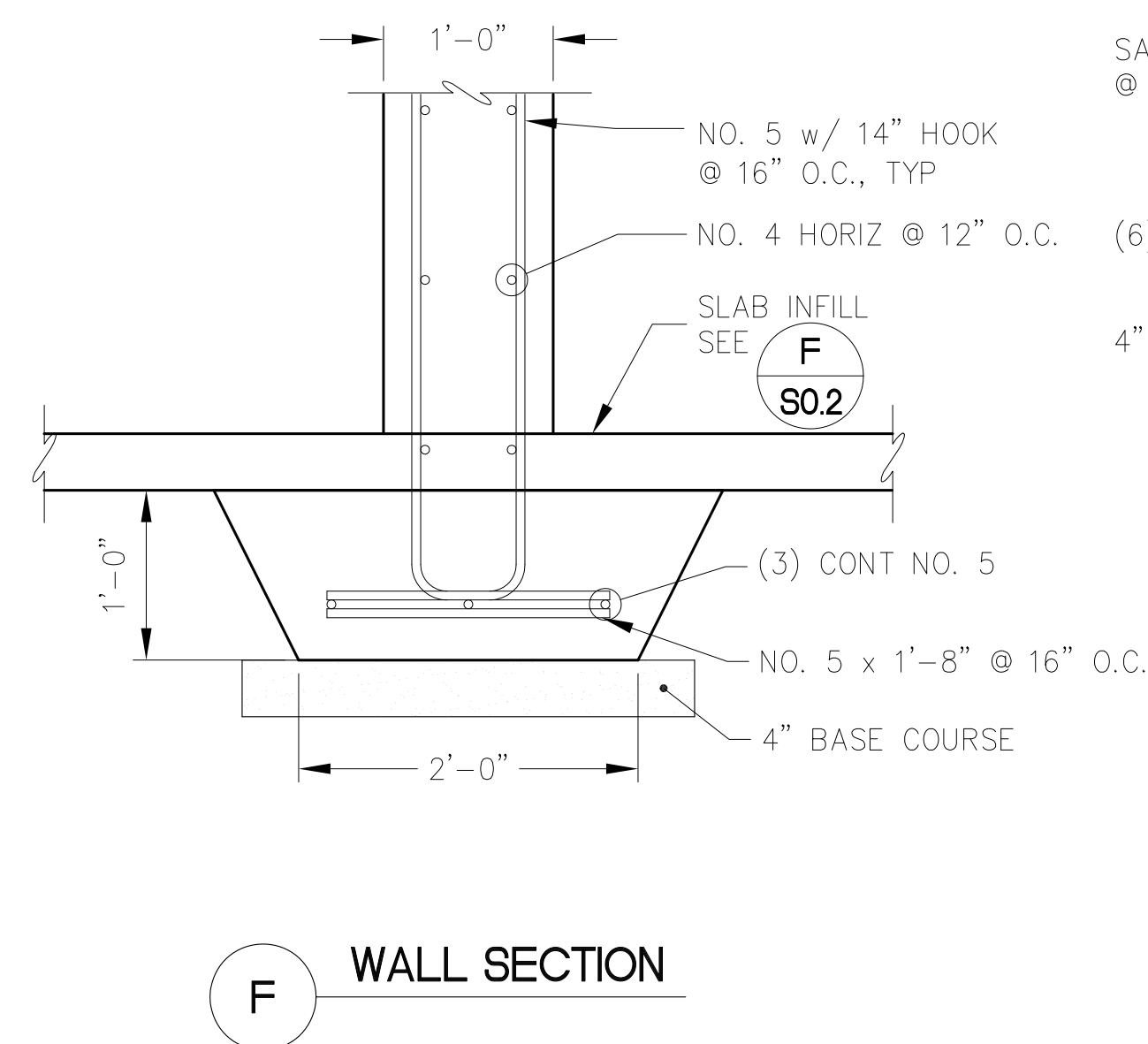
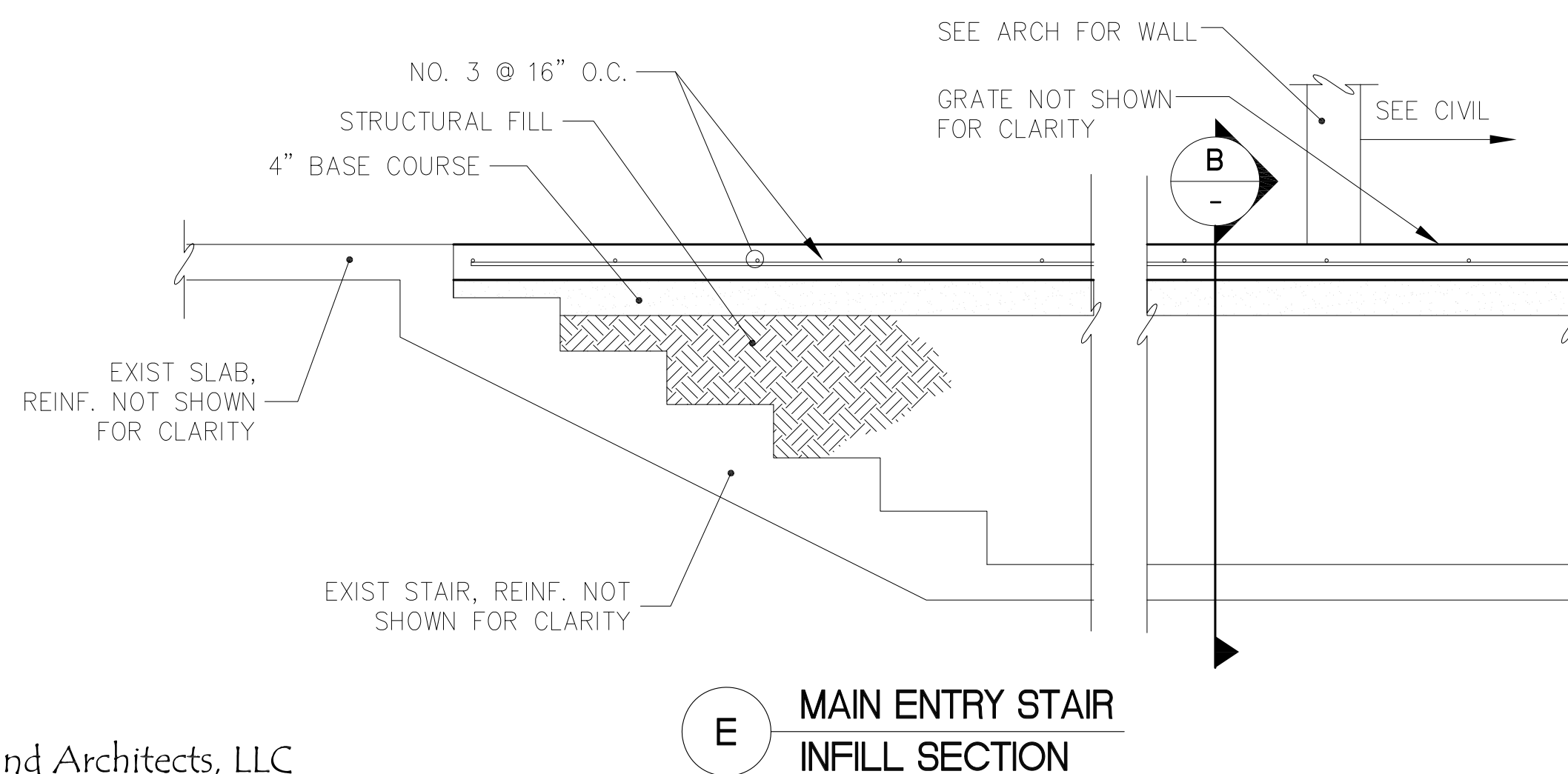
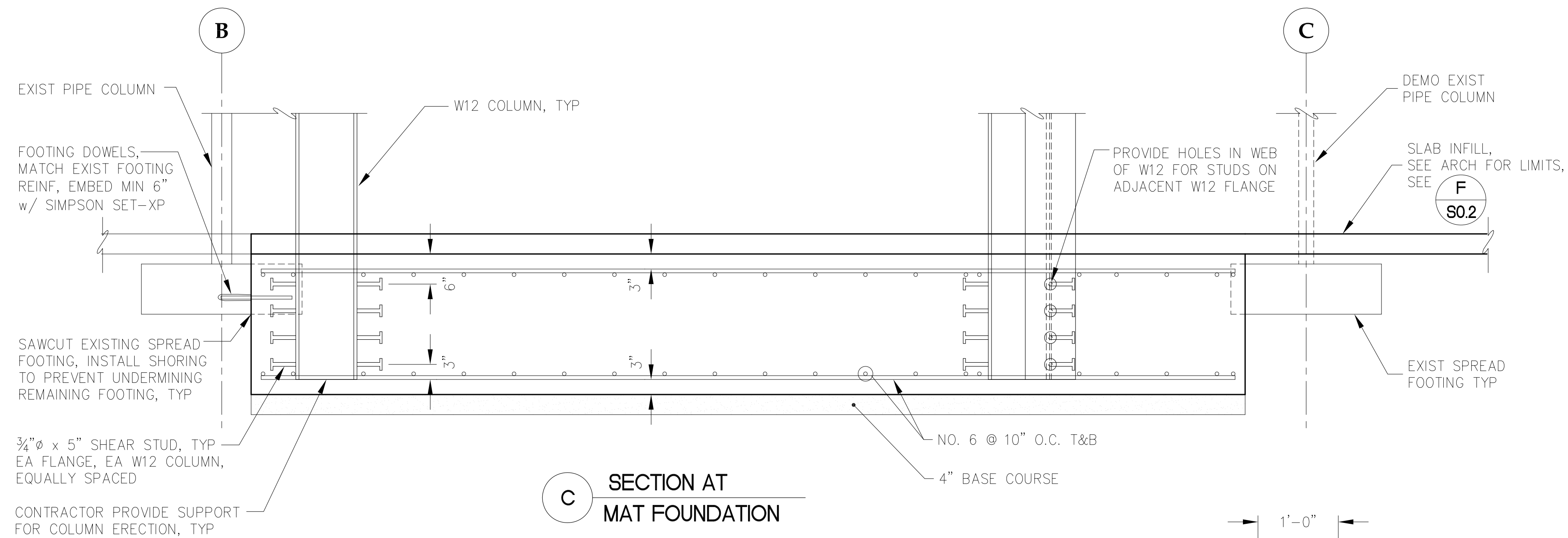
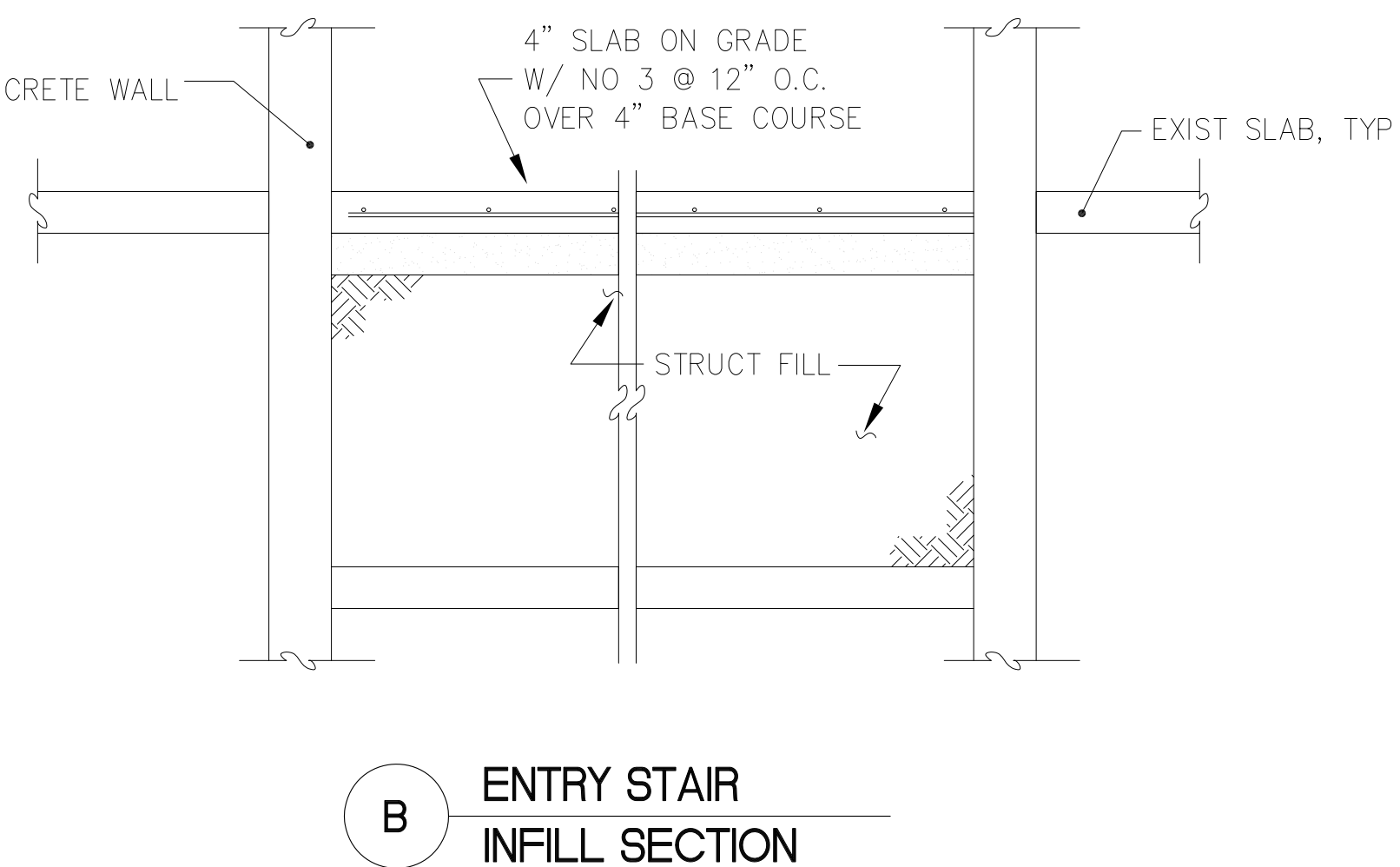
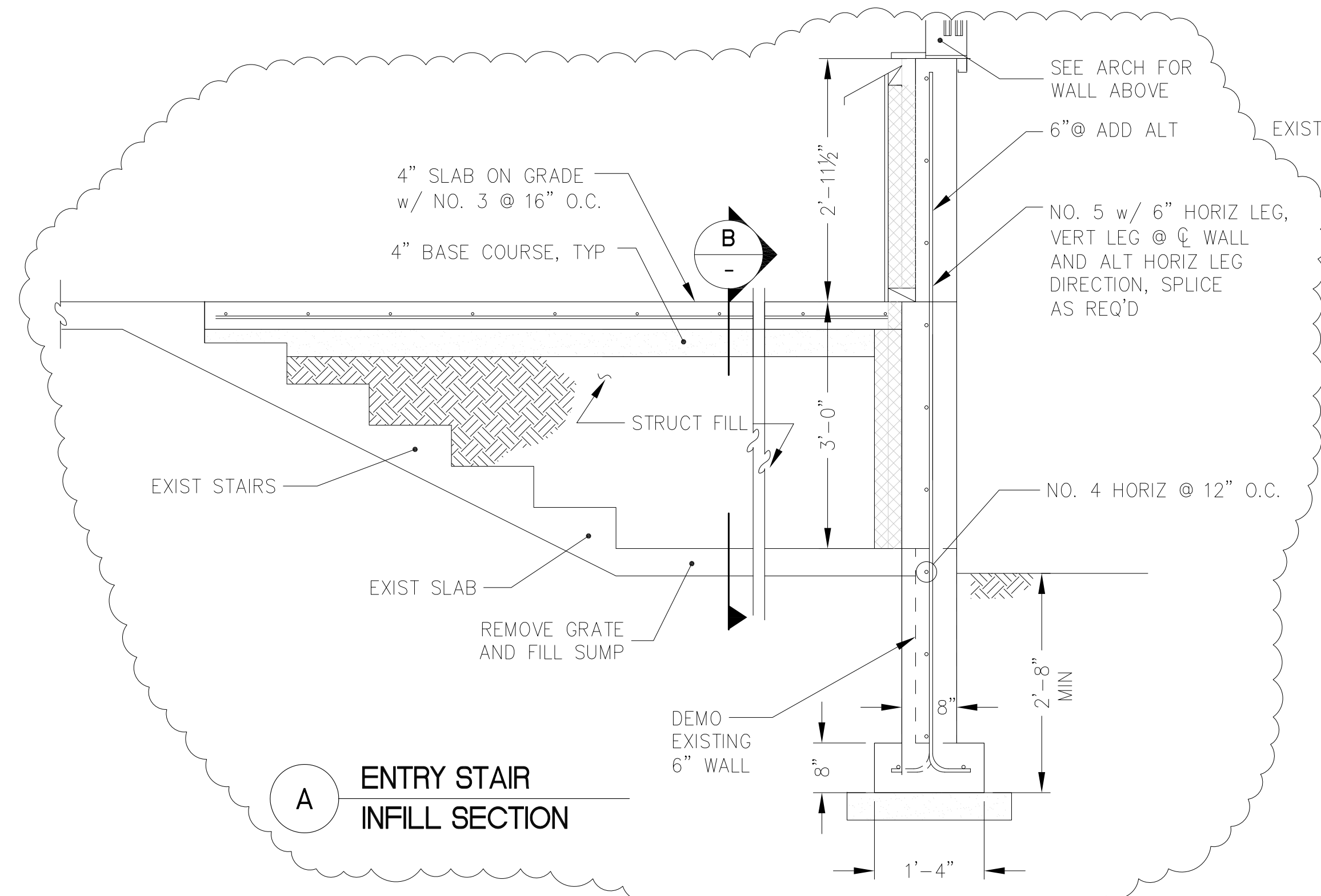
RENOVATION

CB/ Contract No. E11-157
JUNEAU, ALASKA

SHEET TITLE:	
I-STREET ADD. ALTERNATE	
DATE:	DEC. 15, 2010
REVISION:
CHECKED BY:	CMG
DRAWN:	NAM

SHEET #

C1.9



W
N
North Wind
Architects LLC

19A 2ND ST.
JUNEAU, AK 99801
PH #907.586.6150
FX #907.586.6181
WWW.NORTHWINDARCH.COM

P | N | D
ENGINEERS, INC.
360 Glacier Highway, Ste 100
Unalaska, Alaska 99801
Phone: 907.586.2093
Fax: 907.586.2099
PND # 092078

GASTINEAU ELEMENTARY SCHOOL

RENOVATION

CBJ Contract No. E11-157

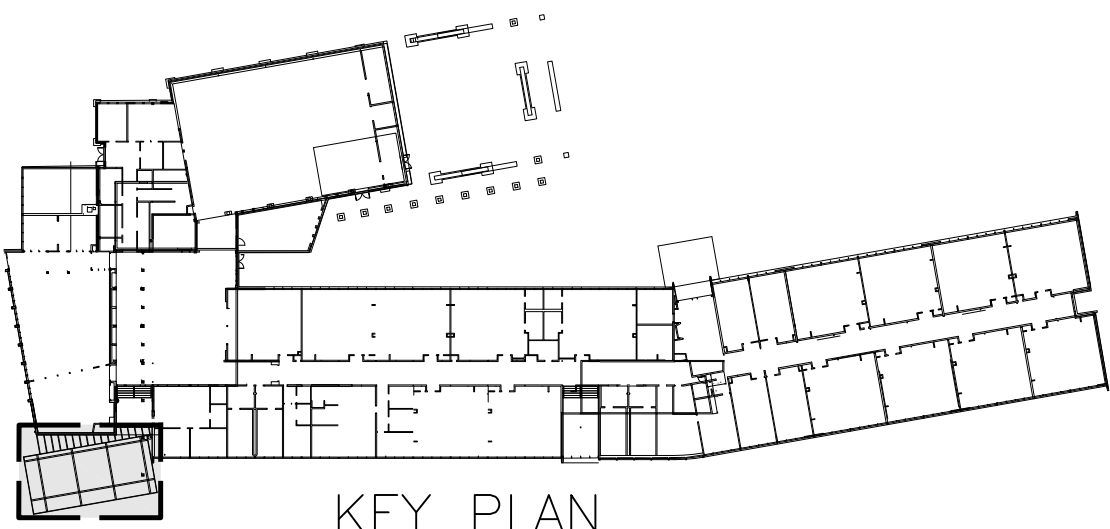
JUNEAU, ALASKA

SHEET TITLE:
FOUNDATION
DETAILS

DATE: NOV. 15, 2010
REVISION:
CHECKED BY: CMG
DRAWN: KLL

SHEET #

S2.2



NorthWind Architects LLC

119A 2ND ST.
JUNEAU, AK 99801
PH #907.586.6150
FX #907.586.6181
WWW.NORTHWINDARCH.COM

P N D
ENGINEERS, INC.
9360 Glacier Highway, Ste 100
Juneau, Alaska 99801
Phone: 907.586.2093
Fax: 907.586.2099
PND # 092078

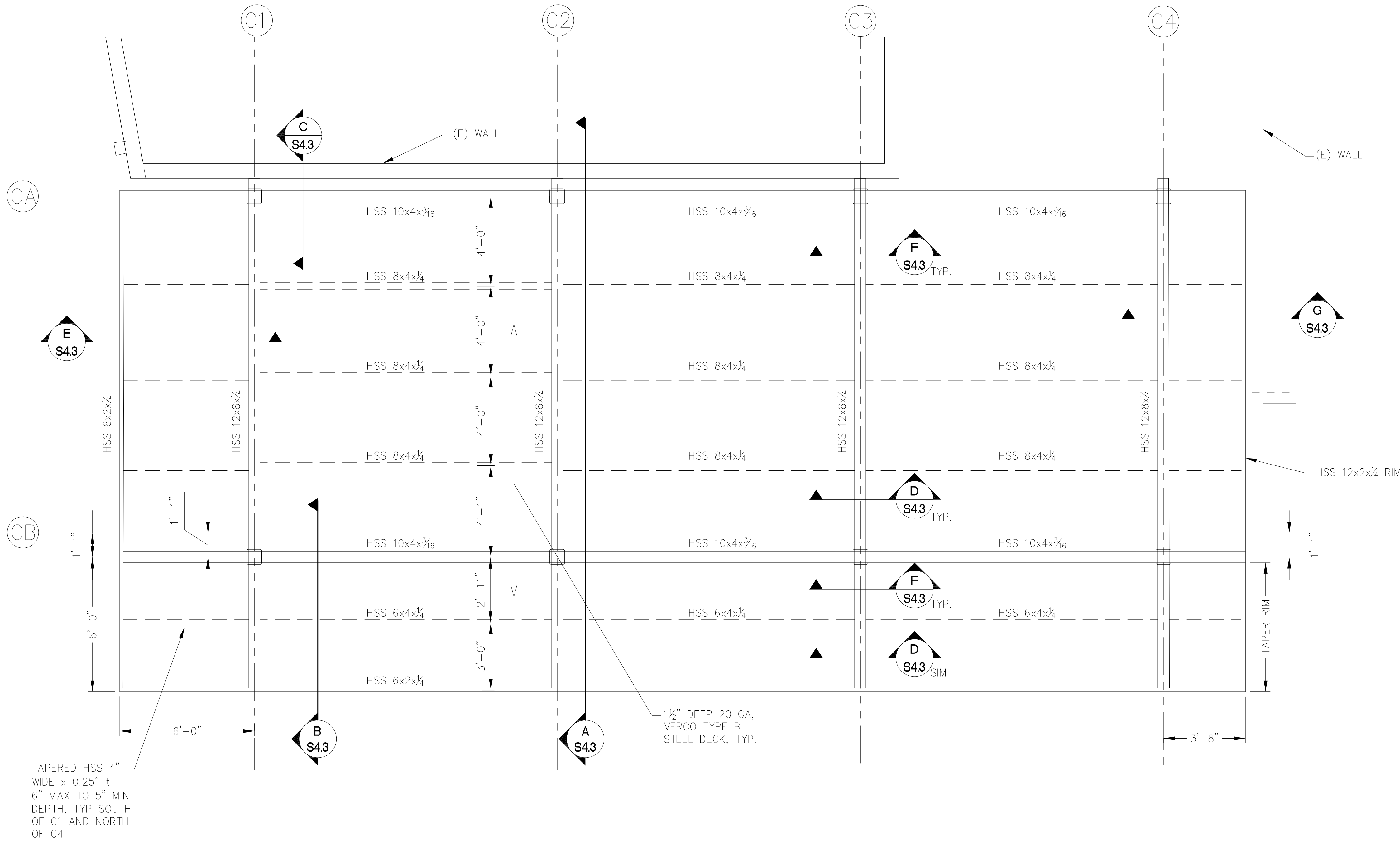
GASTINEAU ELEMENTARY SCHOOL
RENOVATION
CBJ Contract No. E11-157
JUNEAU, ALASKA

SHEET TITLE:
**ROOF FRAMING
PLAN: MAIN ENTRY
CANOPY**

DATE: NOV. 15, 2010
REVISION:
CHECKED BY: CMG
DRAWN: KLL

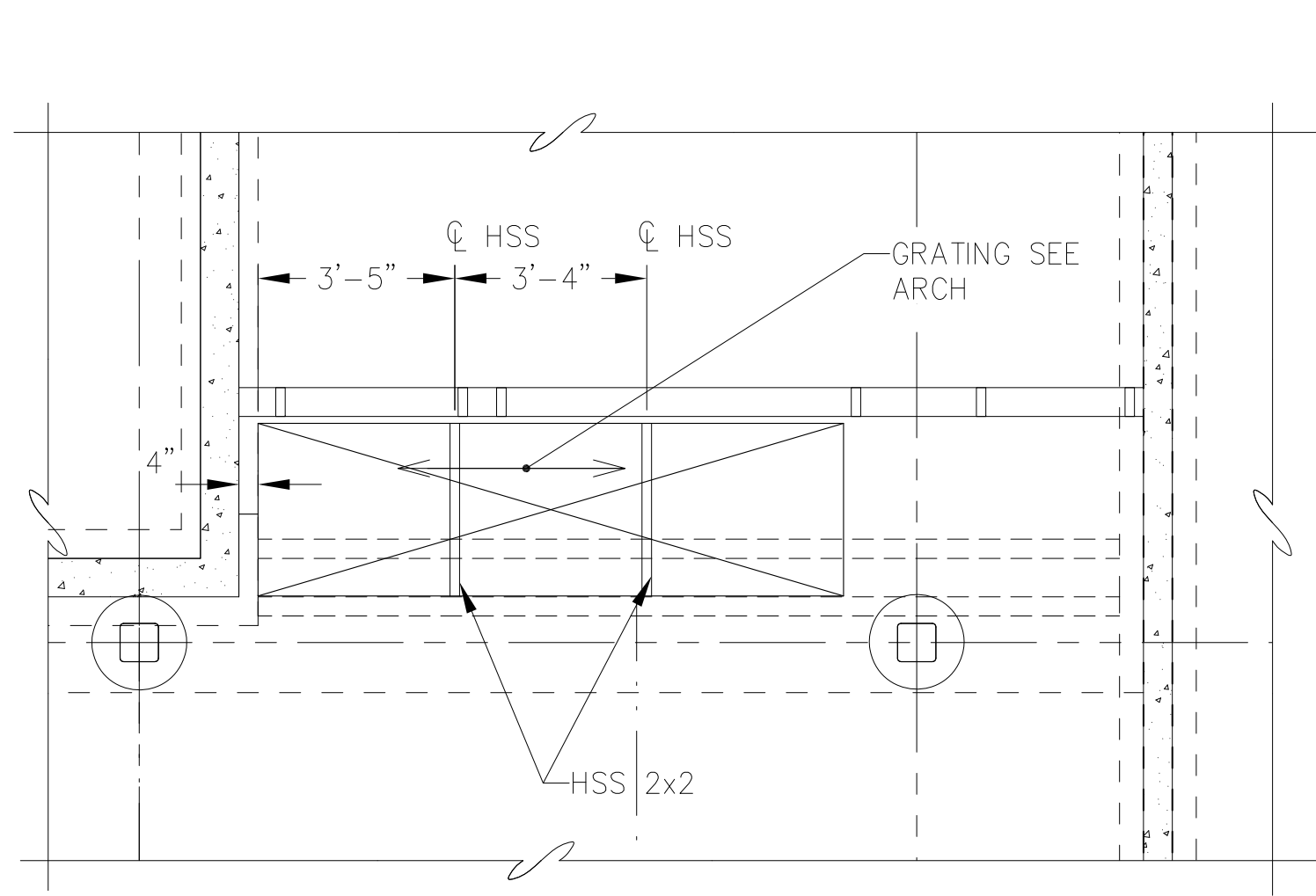
SHEET #

S4.1

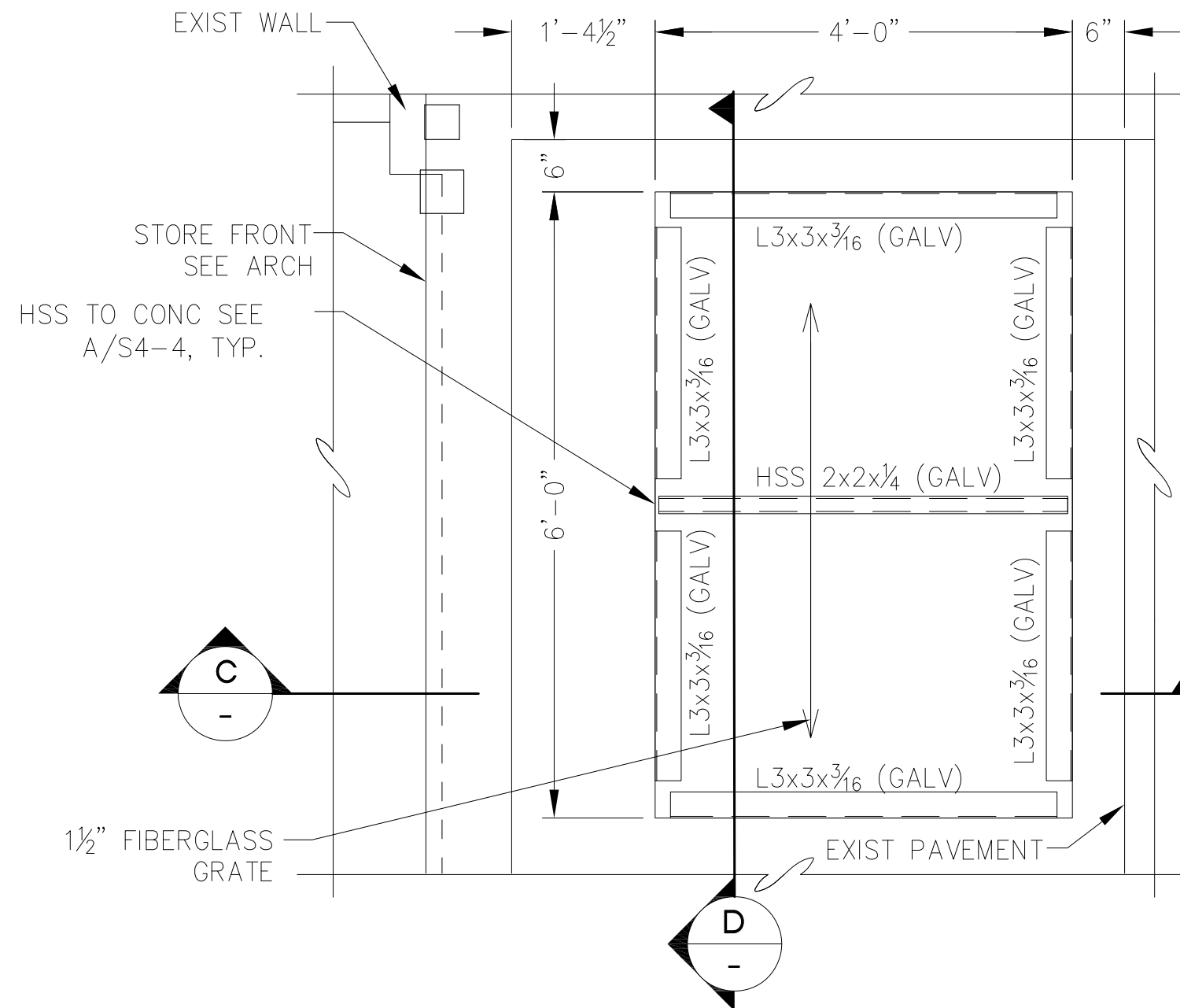


NOTE:
1. CONNECT STEEL DECK TO SUPPORTING STEEL W/ HILTI XEDN 19 FASTENERS, 7 PER 36" WIDE SHEET. WHERE FLUTES ARE PERPENDICULAR TO SUPPORT AND AT 12" O.C. WHERE FLUTES ARE PARALLEL W/ SUPPORT. CONNECT ADJACENT PANELS WITH VERO SIDE LAP PUNCH LOCK CONNECTION @ 12" O.C.

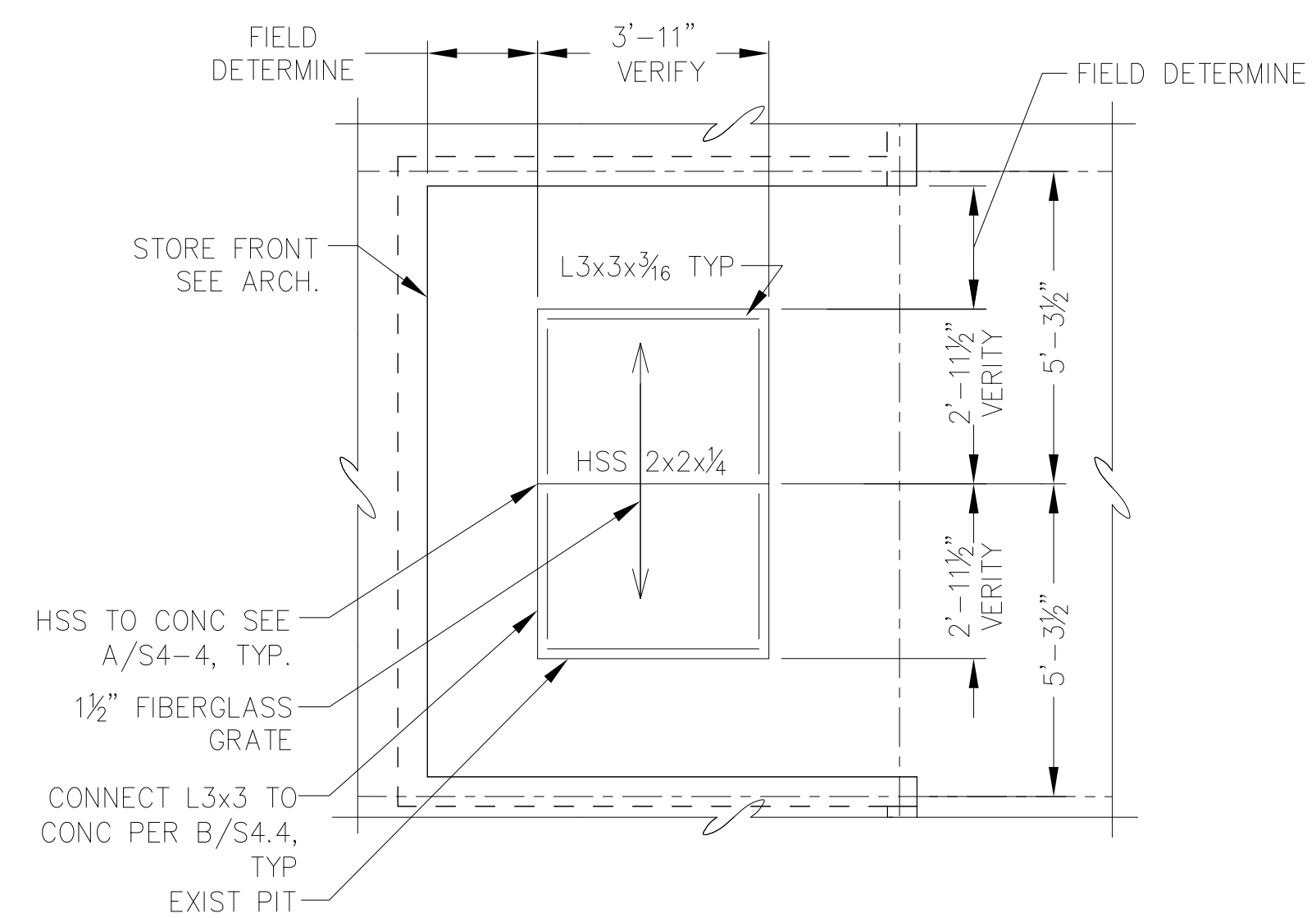
**1 MAIN ENTRY CANOPY
FOUNDATION ROOF PLAN**



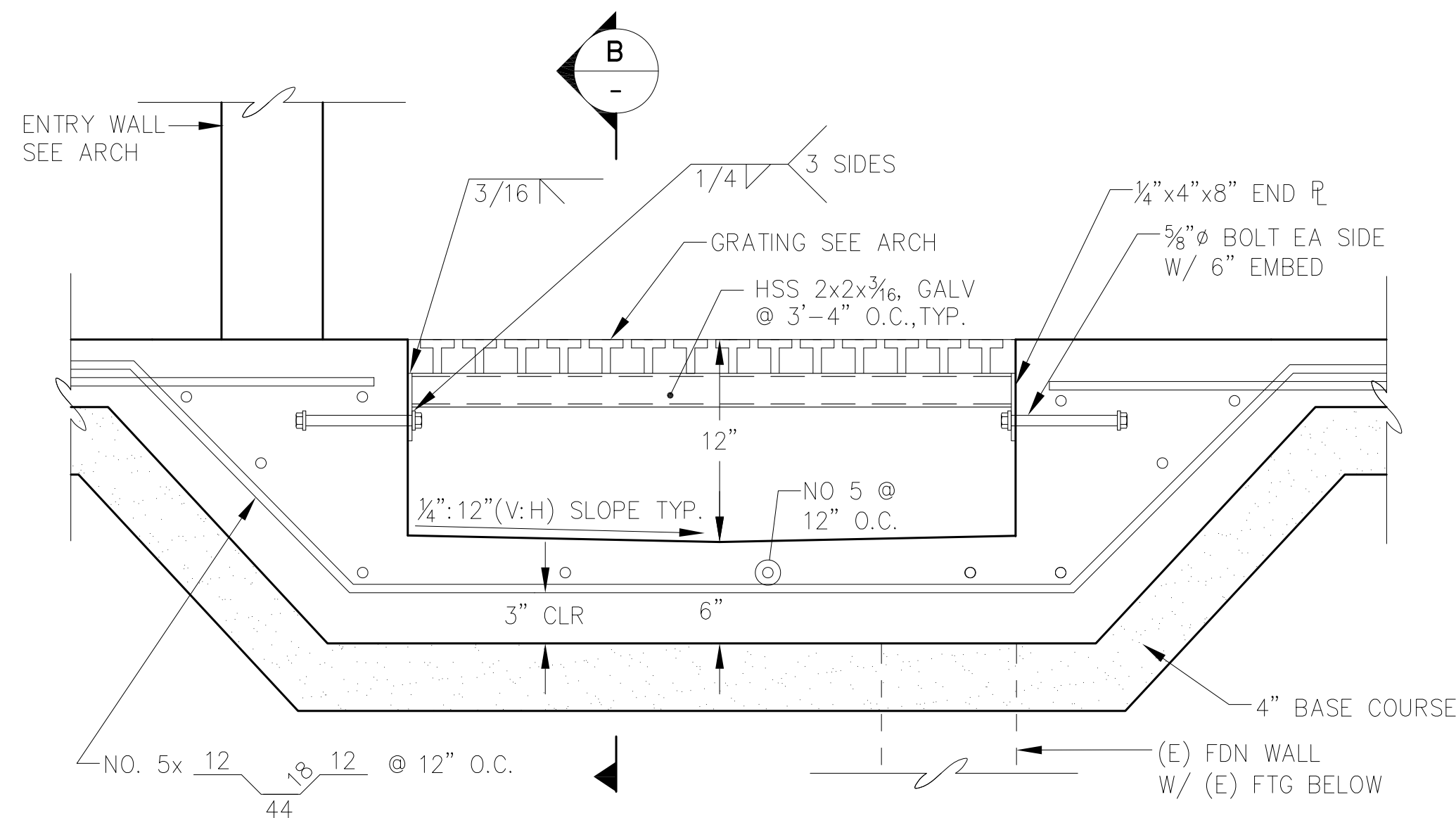
1 ENTRY PIT/GRATE



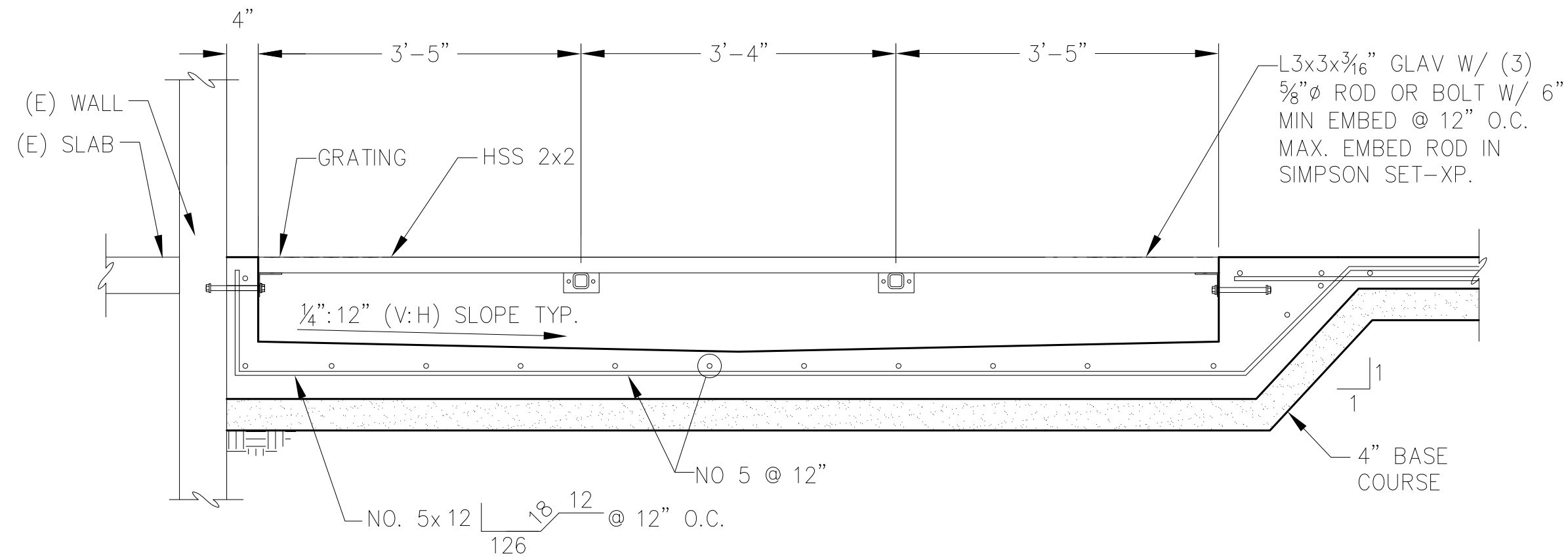
2 GRATING - PIT AT DOOR 145



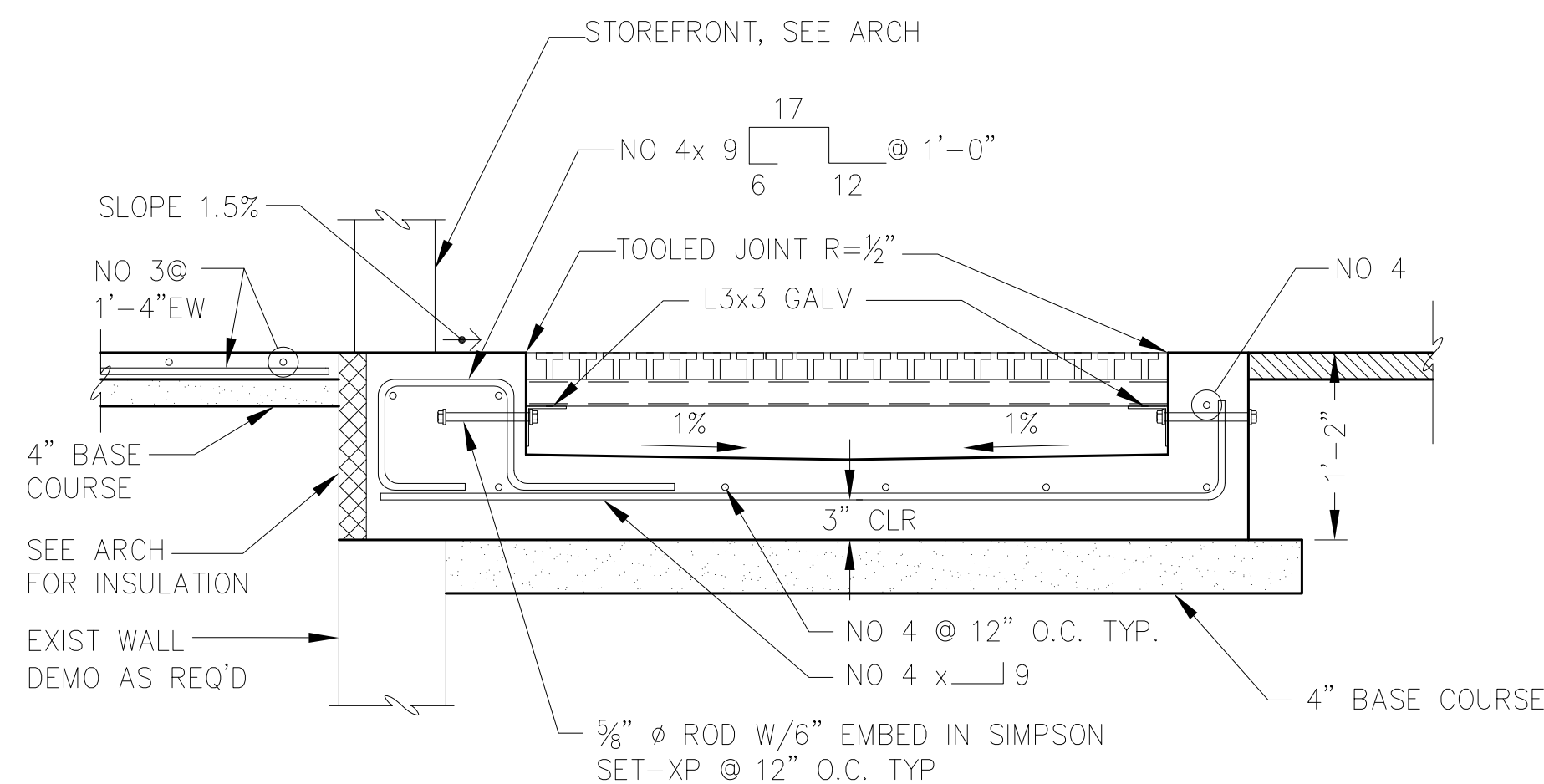
3 GRATING AT DOOR 101



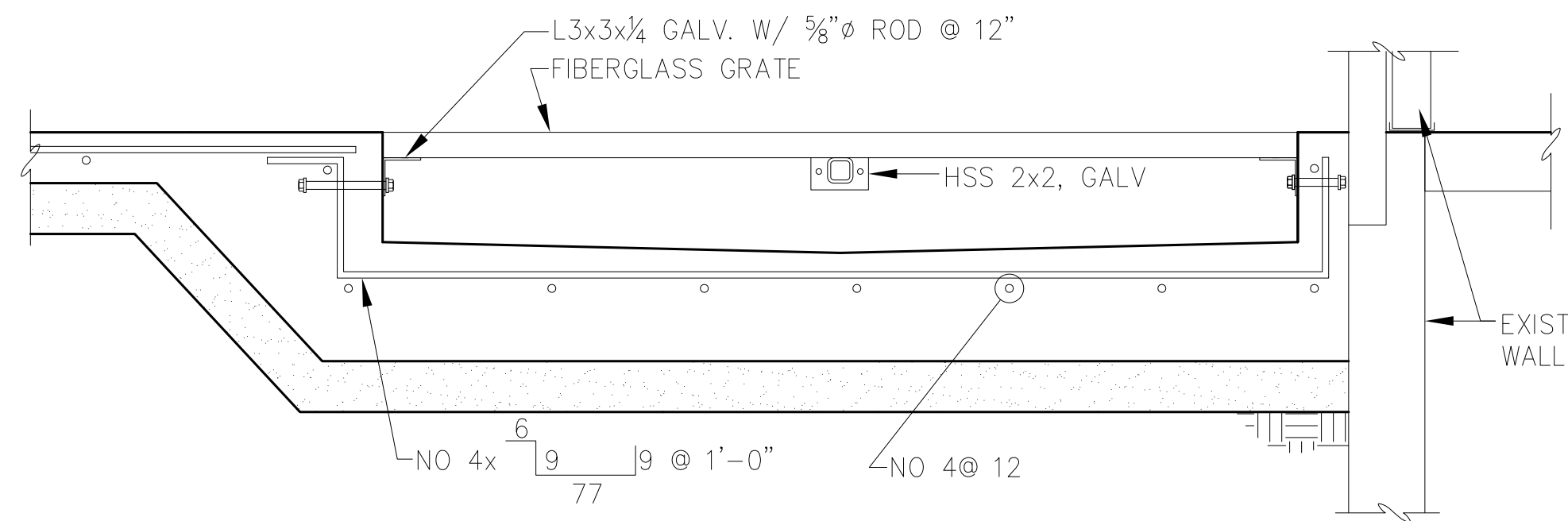
A GRATE / PIT SECTION



B GRATE / PIT SECTION



C SECTION AT DOOR



D SECTION AT DOOR



NorthWind Architects LLC

119A 2ND ST.
JUNEAU, AK 99801
PH #907.586.6150
FX #907.586.6181
WWW.NORTHWINDARCH.COM

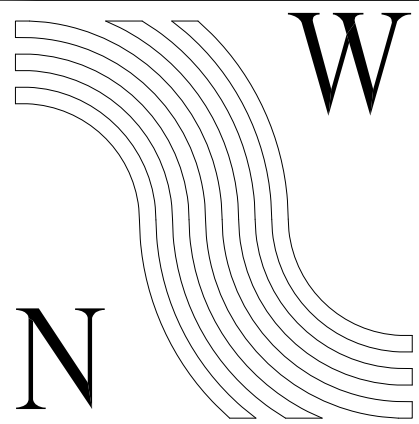
P N D
ENGINEERS, INC.
9360 Glacier Highway, Ste 100
Juneau, Alaska 99801
Phone: 907.586.2093
Fax: 907.586.2099
PND # 092078

GASTINEAU ELEMENTARY SCHOOL
RENOVATION
CBJ Contract No. E11-157
JUNEAU, ALASKA

SHEET TITLE:
MAIN ENTRY CANOPY FOUNDATION DETAILS

DATE: NOV. 15, 2010
REVISION:
CHECKED BY: CMG
DRAWN: KLL

SHEET #
S4.4



**NorthWind
Architects LLC**

119A 2ND ST.
JUNEAU, AK 99801
PH #907.586.6150
FX #907.586.6181
WWW.NORTHWINDARCH.COM

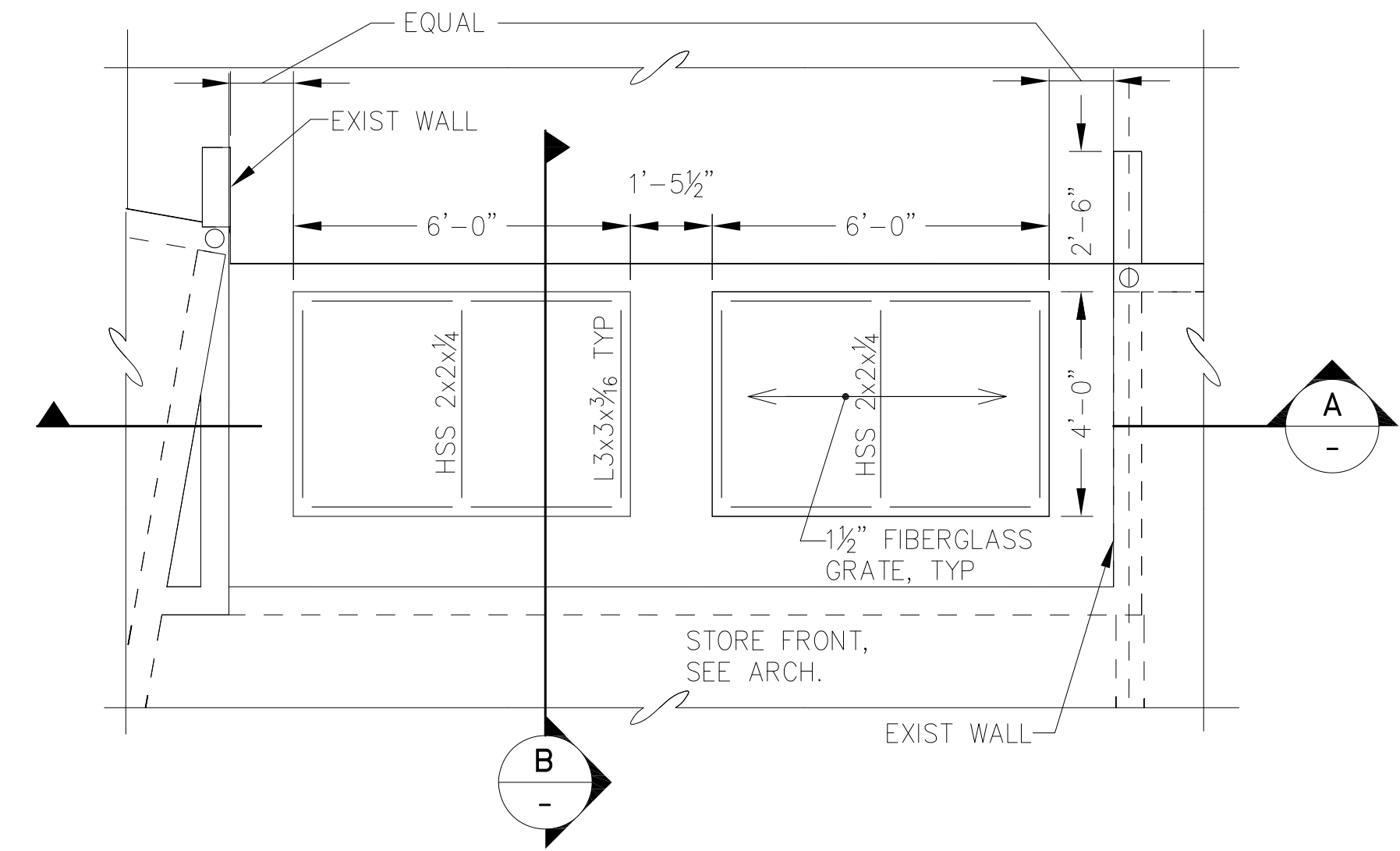
P N D
ENGINEERS, INC.
9360 Glacier Highway, Ste 100
Juneau, Alaska 99801
Phone: 907.586.2093
Fax: 907.586.2099
PND # 092078

GASTINEAU ELEMENTARY SCHOOL
RENOVATION
CBJ Contract No. E11-157
JUNEAU, ALASKA

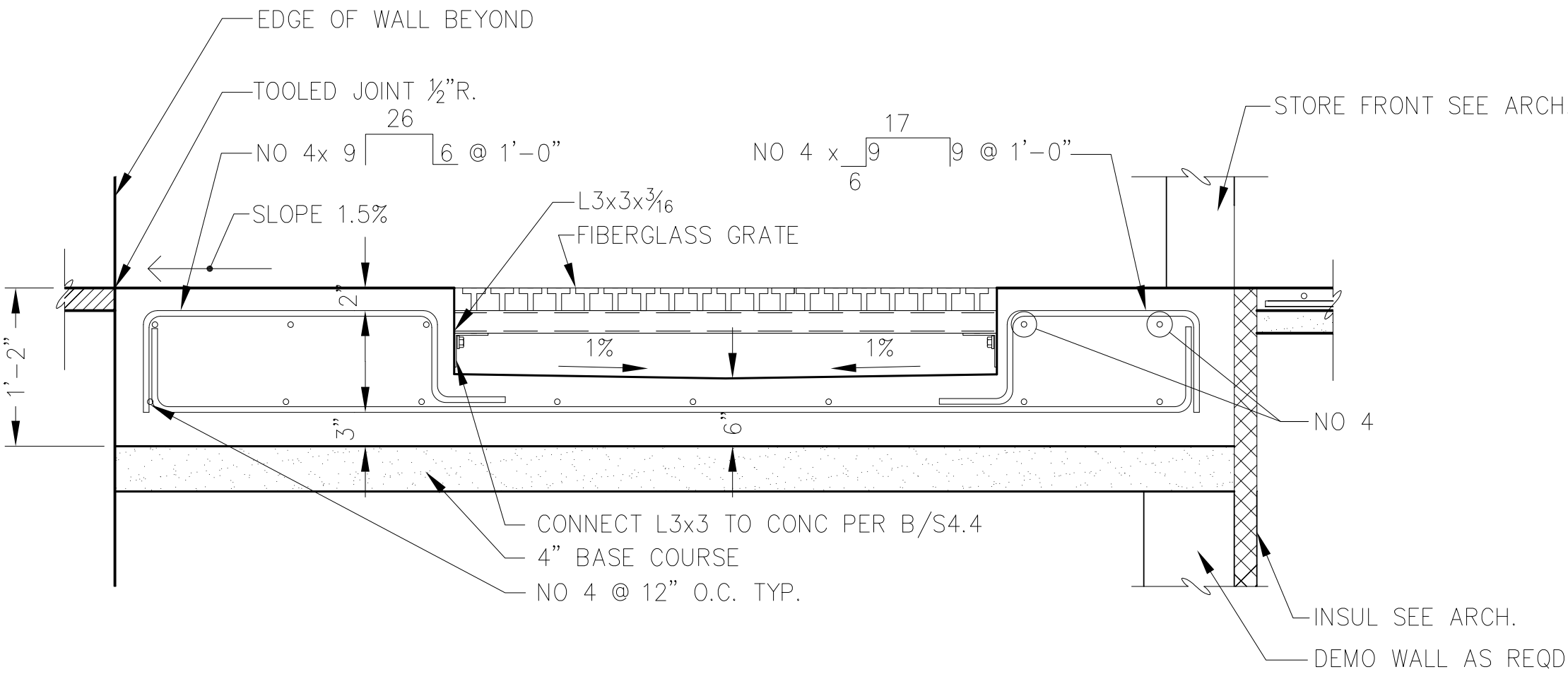
SHEET TITLE:
**MAIN ENTRY CANOPY
FOUNDATION
DETAILS**

DATE: NOV. 15, 2010
REVISION:
CHECKED BY: CMG
DRAWN: KLL

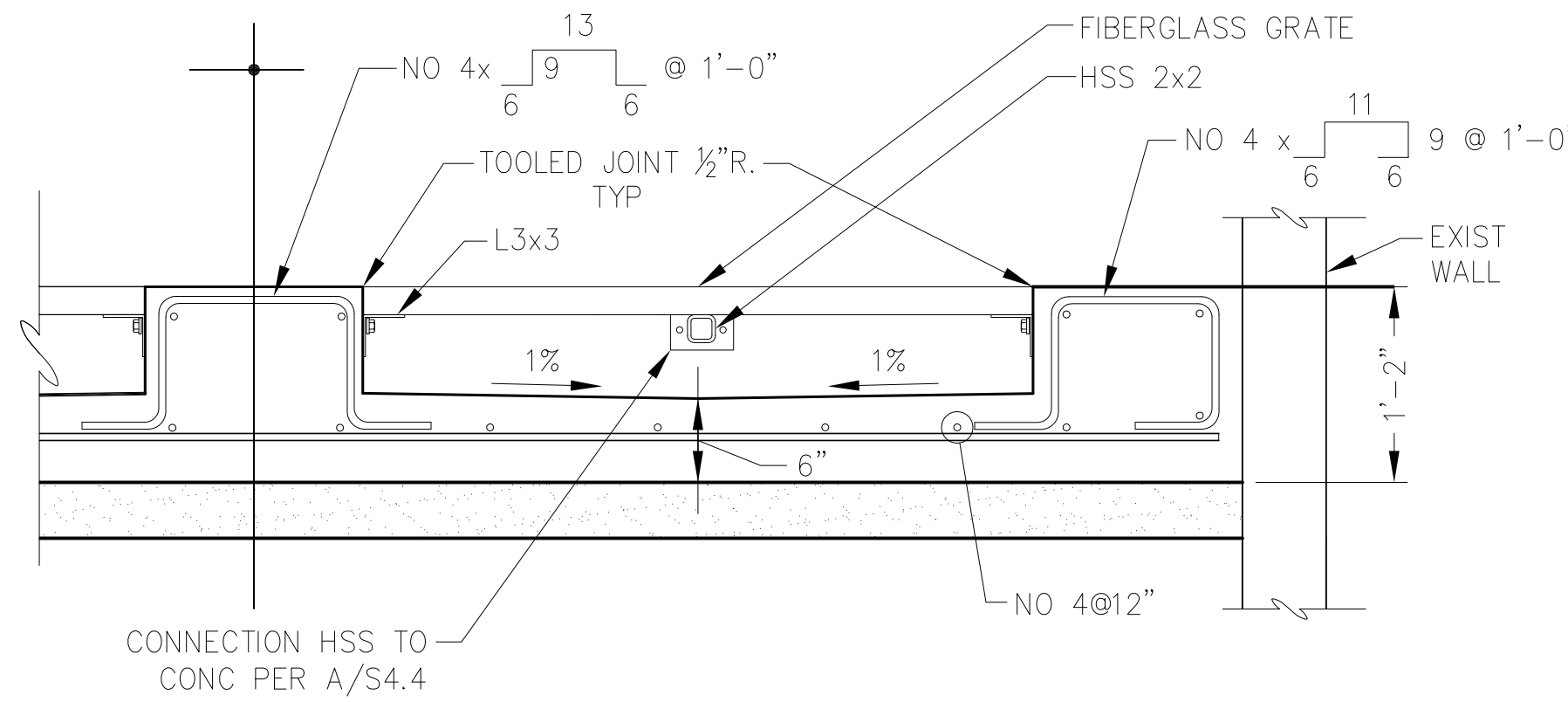
SHEET #
S4.5



**1 GRATE - PITS AT FOYER
117**



B SECTION AT FOYER



A SECTION AT FOYER