



## ADDENDUM TO THE CONTRACT

for the

### Gastineau Elementary School Renovation

Contract No. E11-137

**ADDENDUM NO.:** SEVEN

**CURRENT DEADLINE FOR BIDS:**  
January 11, 2011

**PREVIOUS ADDENDA:** SIX

**ISSUED BY:** City and Borough of Juneau  
ENGINEERING DEPARTMENT  
155 South Seward Street  
Juneau, Alaska 99801

**DATE ADDENDUM ISSUED:** December 17, 2010

The following items of the contract are modified as herein indicated. All other items remain the same. This is a faxed addendum. A confirming copy will not be mailed to you. If this fax is incomplete, please call (907) 586-0490, and we will re-send it. This addendum has been issued and is posted online. Please refer to the CBJ Engineering Contracts Division webpage at:  
<http://www.juneau.org/engineering ftp/contracts/Contracts.php>

#### **PROJECT MANUAL – VOLUME I:**

- Item No. Section 02300 - Earthwork, Article 1.3, I: After "Aggregate Layer" ***insert*** "consisting of satisfactory soils or imported Fill and Backfill".
- Item No. Section 02300 - Earthwork, Article 2.1, D: ***Replace*** "Imported Backfill" ***with*** "Imported Fill and Backfill".
- Item No. Section 02741 – Asphalt Concrete Pavement, Article 1.1 C: ***Delete*** this paragraph in its entirety.
- Item No. Section 02741 – Asphalt Concrete Pavement: ***Delete*** Article 2.6, Materials, in its entirety.
- Item No. Section 02741 – Asphalt Concrete Pavement: ***Delete*** Article 3.14, General, in its entirety.
- Item No. Section 02741 – Asphalt Concrete Pavement, Article 3.10: ***Add*** the following paragraph:
- J. Asphalt Cement grade AC-5 or approved equal shall be applied atop joints where existing asphalt concrete pavement meets newly constructed asphalt concrete pavement.
- Item No. Section 02821 – Chain Link Fences and Gates, Article 2.1, I: ***Delete*** and ***replace*** with "Mesh and wire size shall be two-inch mesh, 9-gage wire with knuckled ends at each edge"


Item No.        Section 03300 – Cast-In-Place Concrete, Article 1.3: **Add** the following paragraph I:

- I.        Slab-On-Grade Pour Plan: General Contractor shall submit plan of concrete slab-on-grade work that identifies construction joint locations and construction joint type. The plan shall identify the extent and sequence of concrete placement. The plan shall identify the number of crew provided for each pour and the skill and experience of each crew member. The plan shall be submitted 10 days prior to the pre-installation conference so that it can be discussed at the conference.

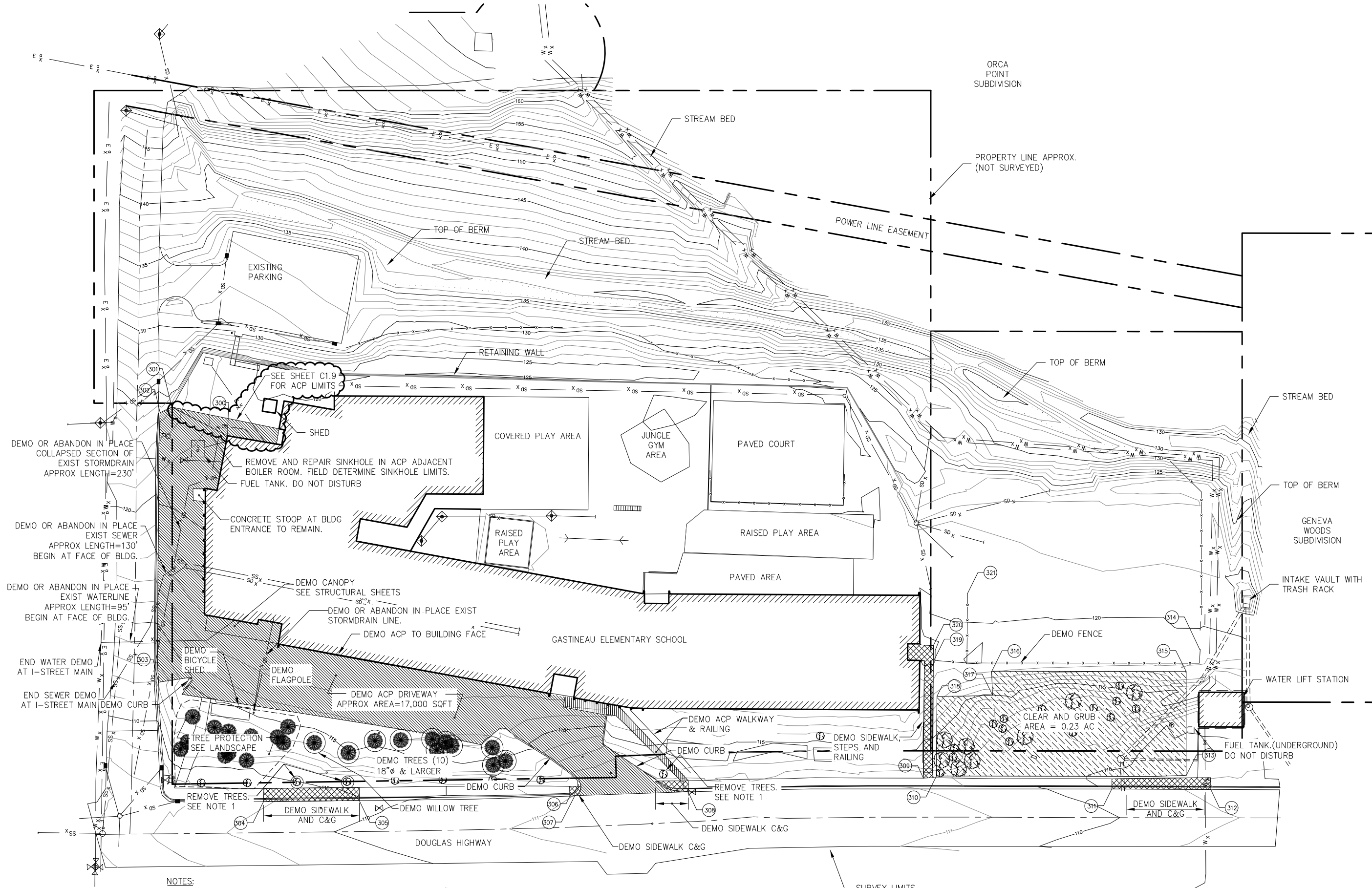
### **DRAWINGS – VOLUME III:**

- Item No.        **Delete** drawing sheets C1.3, C1.9, C1.10 entirely and **replace** with the attached sheets labeled Addendum No. 7.
- Item No.        Sheet C1.8 – Driveway Plan & Profile Add. Alternate: **Modify** note “ Match exist edge ACP approx Sta 1+04” **to read:** “Match exist edge ACP approx Sta 1+04, saw cut and tack coat”.
- Item No.        Sheet C1.8 – Driveway Plan & Profile Add. Alternate: **Modify** note “ Match exist edge ACP approx Sta 3+40” **to read:** “Match exist edge ACP approx Sta 3+40, saw cut and tack coat”.
- Item No.        Sheet C1.11 – Typical Sections Base Bid, Detail A: **Change** note reading “Min 4” D-1 Crushed Aggregate” **to** “Min 4” Base Course”.
- Item No.        Sheet C1.12 – Typical Sections Add. Alternate, Detail C: **Change** note reading “Suitable Fill” **to** “Structural Fill”.
- Item No.        Sheet C1.14 – North Parking Retaining Wall Add. Alternate, Detail A: **Change** note reading “Native Backfill” **to** “Structural Fill. Reuse excavated material to the greatest extent possible”.
- Item No.        Sheet S1.2 – Demo Plan: Roof: Area A, Detail 1: **Change** bubble at note reading “For Concrete Wall Demo, See” to Detail 3 at S3.1.
- Item No.        Sheet S2.2 – Foundation Details, Detail A: **Delete** entire sheet and **replace** with the revised sheet S2.2, labeled Addendum No. 7.
- Item No.        Sheet S3.0 – Floor Framing Plan: Fan Room, Detail 1: **Change** Grid Bubble 1 to 5.
- Item No.        Sheet S3.0 – Floor Framing Plan, Detail 1, Note 2. **Add** the following: Demo existing gym wall as required to extend existing column and frame fan room roof beam into top of extended column.
- Item No.        Sheet S3.2 – Roof Framing Details, Detail B: Extend metal deck beyond W12 beam so that edge of metal deck is 12 inches beyond centerline of W12. Change metal deck and open web steel joist top chord extension beyond W18 beam from 1’-3” to 4.5” beyond centerline of W18.

- Item No. Sheet S4.0 - Foundation and Floor Plan: Main Entry Canopy: Detail bubbles at stair cross section should indicate Section E on sheet S4.2.
- Item No. Sheet S4.0 - Foundation and Floor Plan: **Move** storm drain cover near grid intersection C4-CB to match civil plans.
- Item No. Sheet S4.1 – Roof Framing Plan: Main Entry Canopy, Detail A. **Delete** entire sheet and **replace** with the revised sheet S4.1, labeled Addendum No. 7.
- Item No. Sheet S4.2 – Foundation Details, Detail L: Section bubble callout that is partially blocked out should refer to Section I on Sheets S4.2.
- Item No. Sheet S4.4 – Main Entry Canopy Foundation Details: **Delete** entire sheet and **replace** with the revised sheet S4.4, labeled Addendum No. 7.
- Item No. Sheet S4.5 – Main Entry Canopy Foundation Details: **Add** new attached sheet S4.5, labeled Addendum No. 7.
- Item No. Sheet S5.2 – Floor Framing Details, Detail H: **Add** W8 beam at the edge of stair opening and directly beneath metal floor deck.

By:   
Jennifer Mannix,  
Contract Administrator

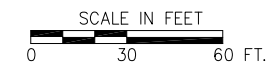
Total number of pages contained within this Addendum: 3 plus 7 Drawings



- NOTES:
1. REMOVE 3 MAPLE TREES FOR REPLANTING. CUT ROOT BALL 18" DEEP AND 5' DIAMETER. KEEP SOIL ON ROOTS AND STOCKPILE TREES. SEE LANDSCAPE SHEETS FOR FURTHER DETAILS.
  2. REMOVE AND REPLACE CONCRETE CURB AND GUTTER & ACP SURFACING ON I-STREET TO MATCH EXISTING CONDITIONS IN CONJUNCTION W/WATER AND SEWER UTILITIES REPLACEMENT.
  3. DEMOLITION OF COLLAPSED STORMDRAIN LENGTH MAY VARY. ADJUST STORMDRAIN DEMOLITION LENGTHS AND LIMITS AS REQ'D IN FIELD.

1

SITE DEMOLITION PLAN  
ADDITIVE ALTERNATE



**DIAL BEFORE YOU DIG!**  
**586-1333**  
UNDERGROUND POWER, TELEPHONE, T.V., WATER  
HERE DO NOT SUBSTITUTE FOR FIELD LOCATES.  
AND SEWER LINES ARE IN THE AREA. UTILITIES SHOWN

**NorthWind Architects LLC**  
119A 2ND ST.  
JUNEAU, AK 99801  
PH #907.586.6150  
FX #907.586.6181  
WWW.NORTHWINDARCH.COM

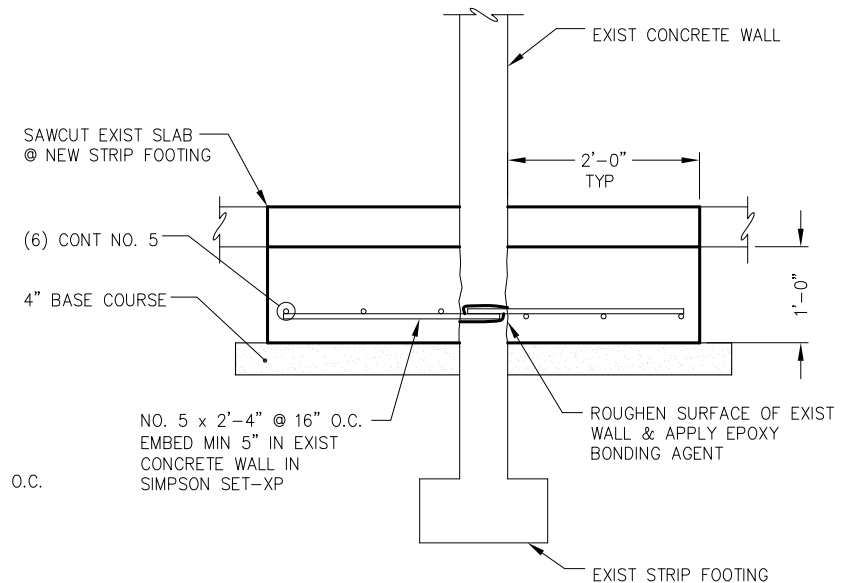
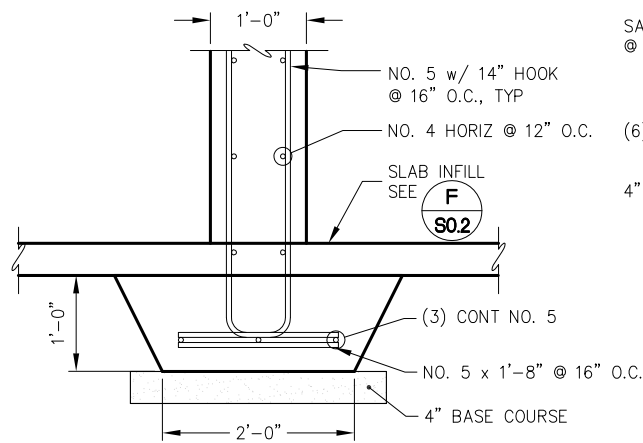
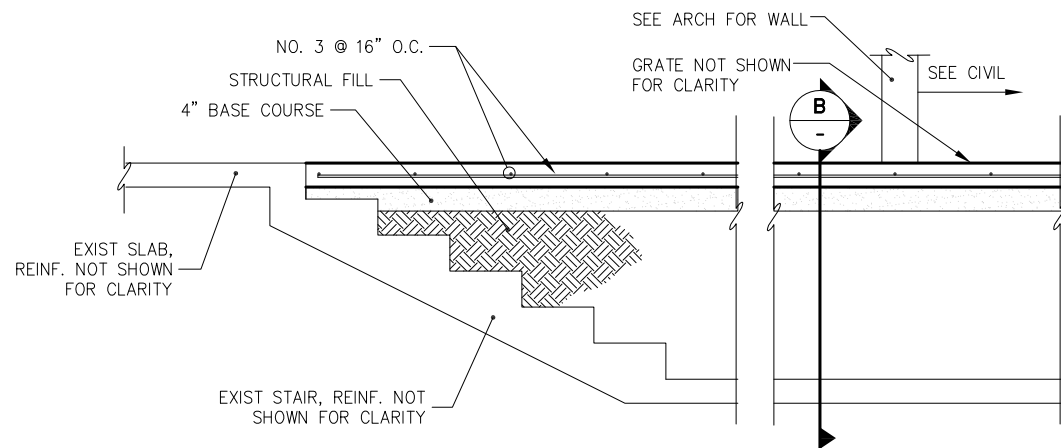
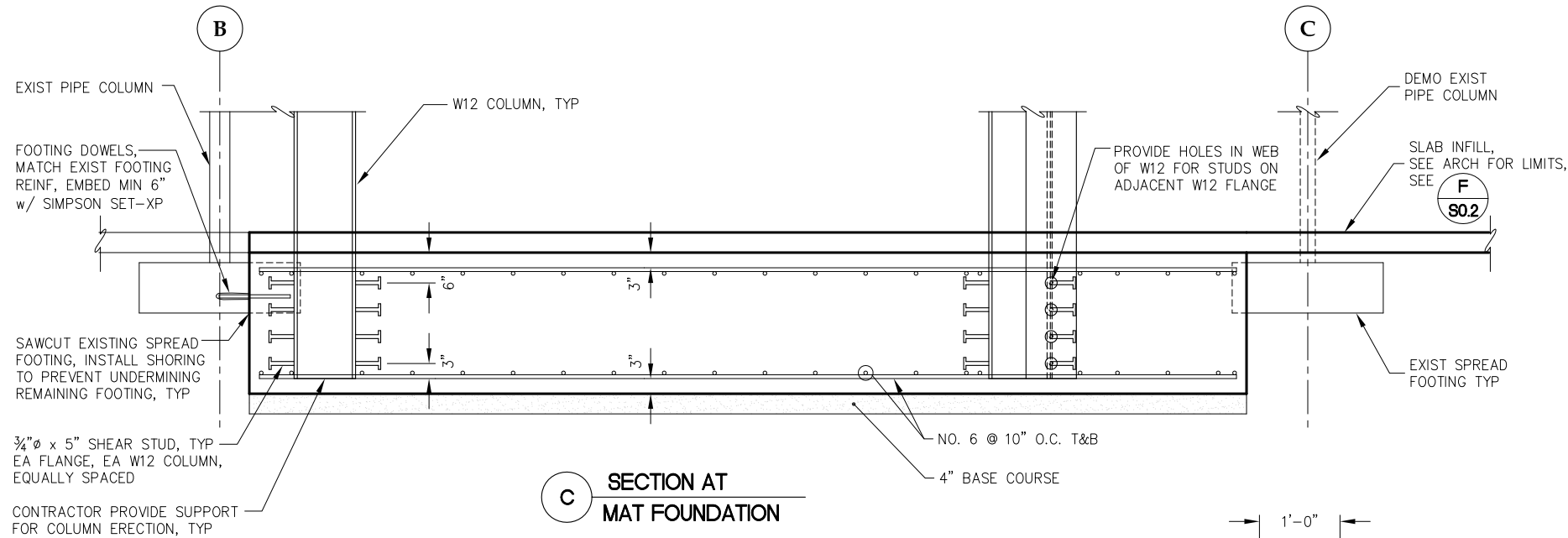
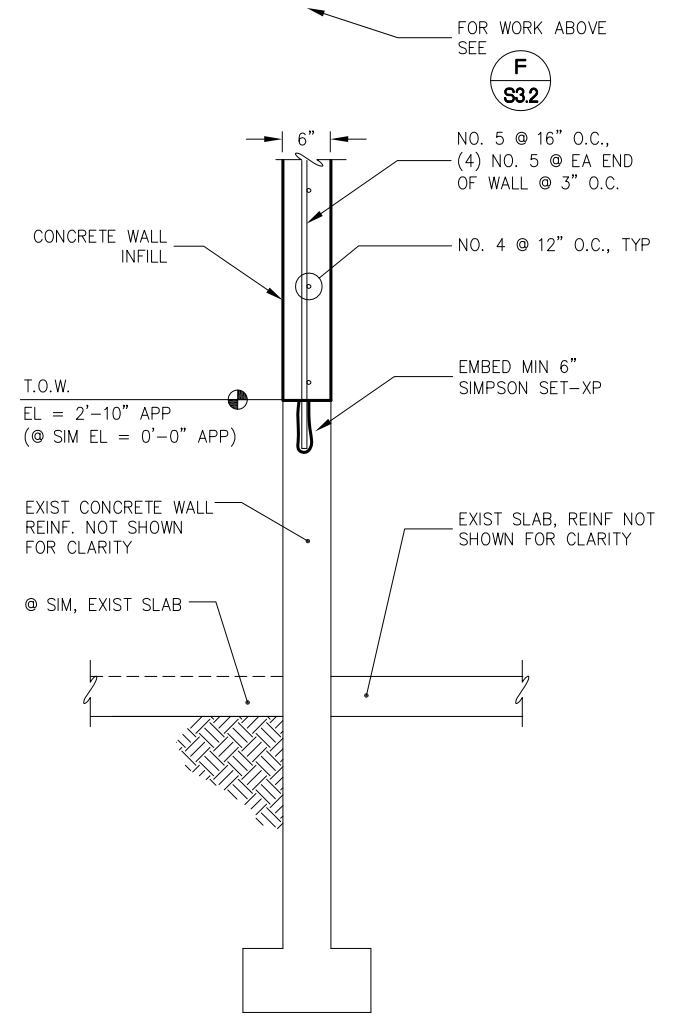
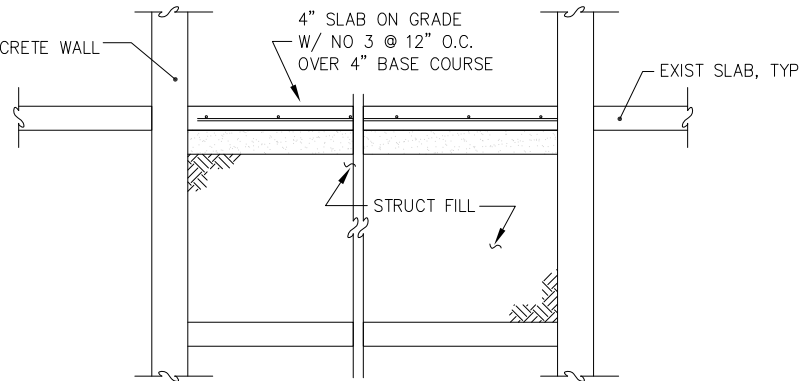
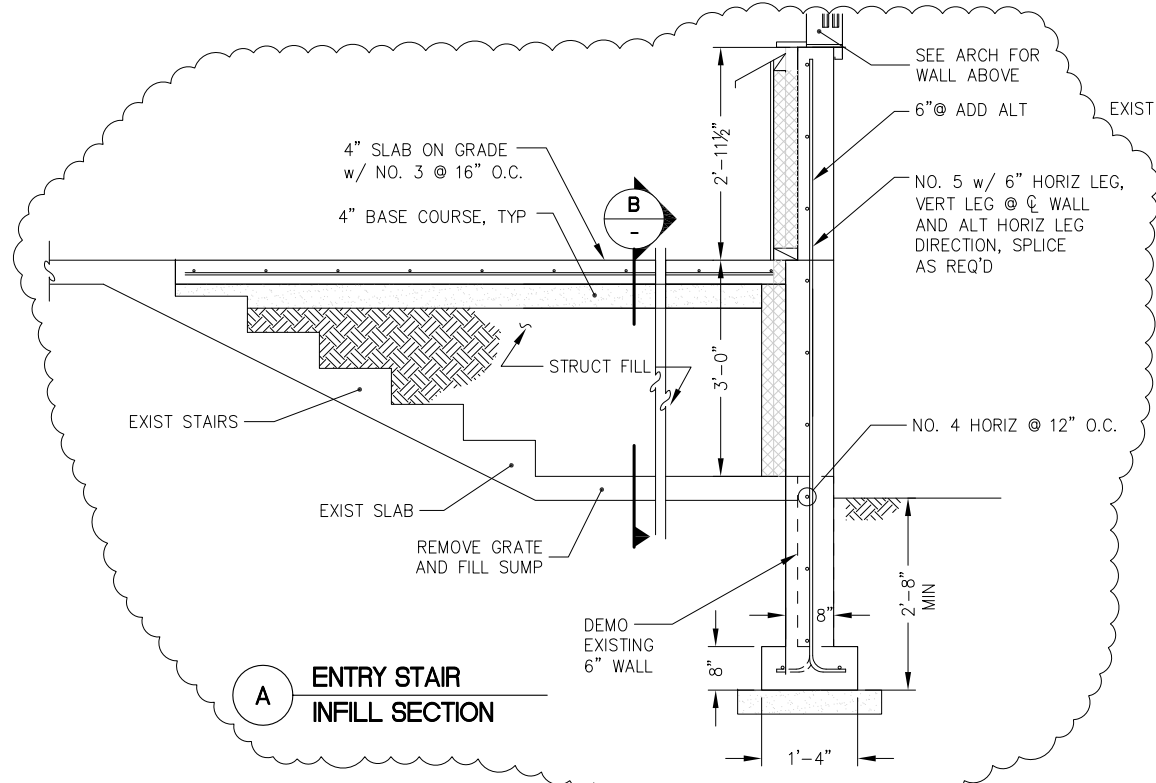
**PND ENGINEERS, INC.**  
9360 Glacier Highway, Ste 100  
Juneau, Alaska 99801  
Phone: 907.586.2093  
Fax: 907.586.2099  
PND # 092078

**GASTINEAU ELEMENTARY SCHOOL**  
**RENOVATION**  
CBJ Contract No. E11-157  
JUNEAU, ALASKA

|              |                                   |
|--------------|-----------------------------------|
| SHEET TITLE: | SITE DEMOLITION<br>ADD. ALTERNATE |
| DATE:        | DEC. 15, 2010                     |
| REVISION:    | ....                              |
| CHECKED BY:  | CMG                               |
| DRAWN:       | NAM                               |
| SHEET #      | C1.3                              |







**NorthWind Architects LLC**

119A 2ND ST.  
JUNEAU, AK 99801  
PH #907.586.6150  
FX #907.586.6181  
WWW.NORTHWINDARCH.COM

**PND ENGINEERS, INC.**  
9360 Glacier Highway, Ste 100  
Juneau, Alaska 99801  
Phone: 907.586.2093  
Fax: 907.586.2099  
PND # 092078

**GASTINEAU ELEMENTARY SCHOOL  
RENOVATION**  
CBJ Contract No. E11-157  
JUNEAU, ALASKA

SHEET TITLE:  
**FOUNDATION  
DETAILS**

DATE: NOV. 15, 2010

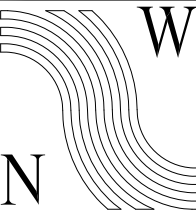
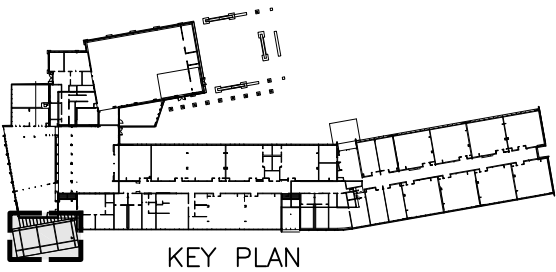
REVISION: ....

CHECKED BY: CMG

DRAWN: KLL

SHEET #

**S2.2**



**NorthWind  
Architects LLC**

119A 2ND ST.  
JUNEAU, AK 99801  
PH #907.586.6150  
FX #907.586.6181  
WWW.NORTHWINDARCH.COM

**P N D**  
**ENGINEERS, INC.**  
9360 Glacier Highway, Ste 100  
Juneau, Alaska 99801  
Phone: 907.586.2093  
Fax: 907.586.2099  
PND # 092078

**GASTINEAU ELEMENTARY SCHOOL  
RENOVATION**  
CBJ Contract No. E11-157  
JUNEAU, ALASKA

SHEET TITLE:  
**ROOF FRAMING  
PLAN: MAIN ENTRY  
CANOPY**

DATE: NOV. 15, 2010

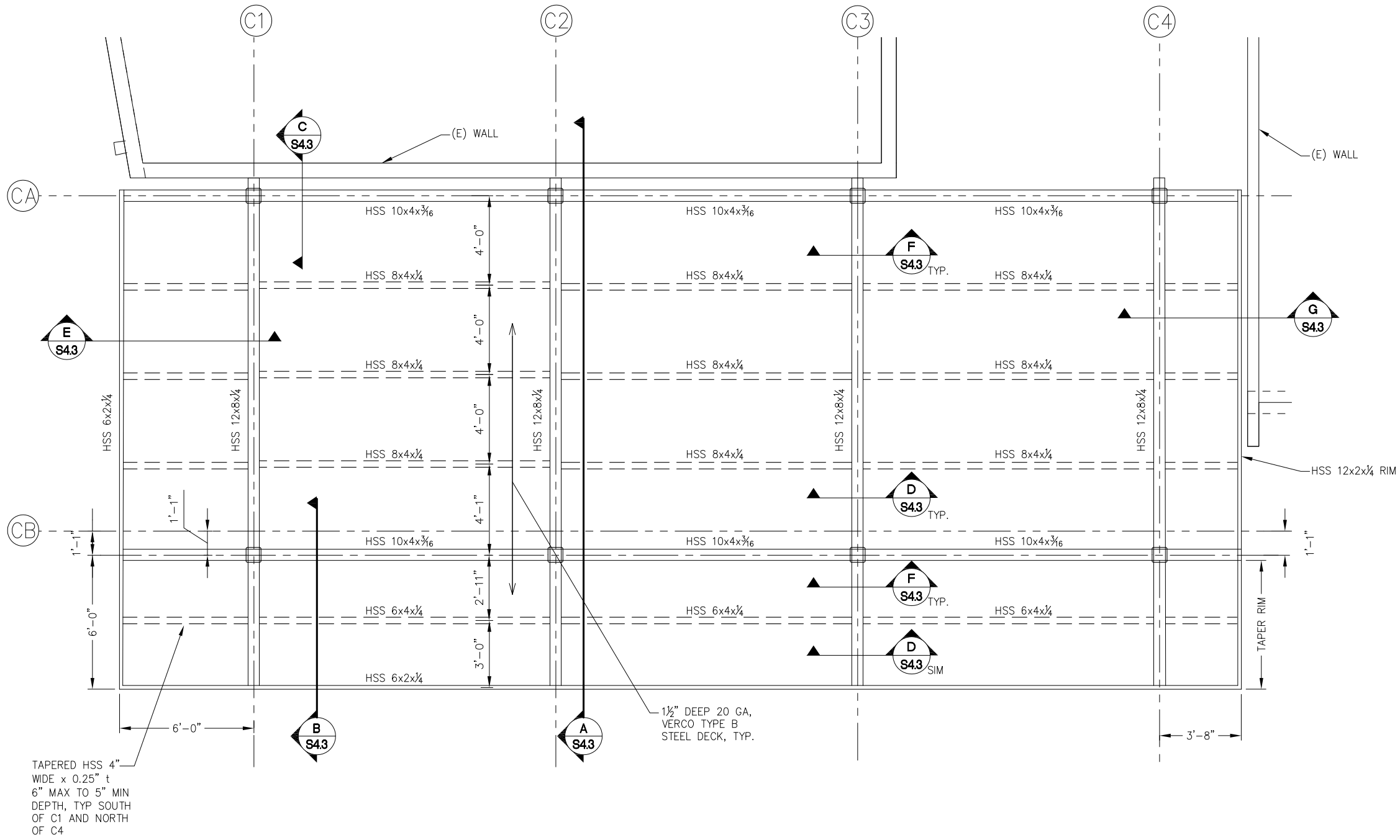
REVISION: ....

CHECKED BY: CMG

DRAWN: KLL

SHEET #

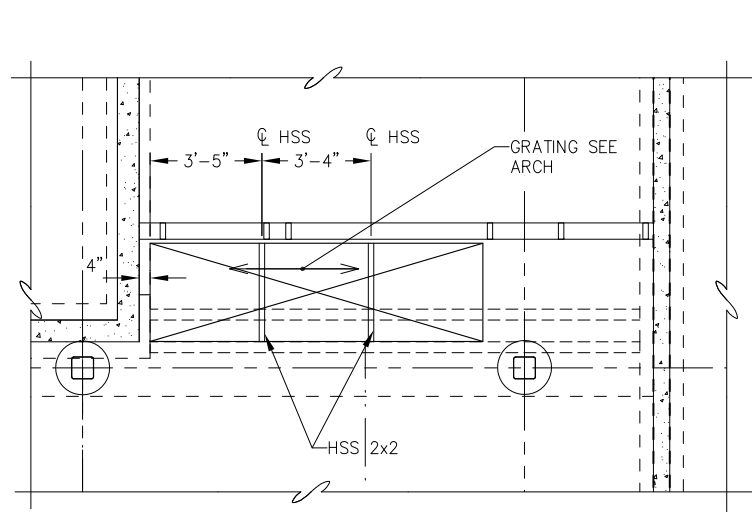
**S4.1**



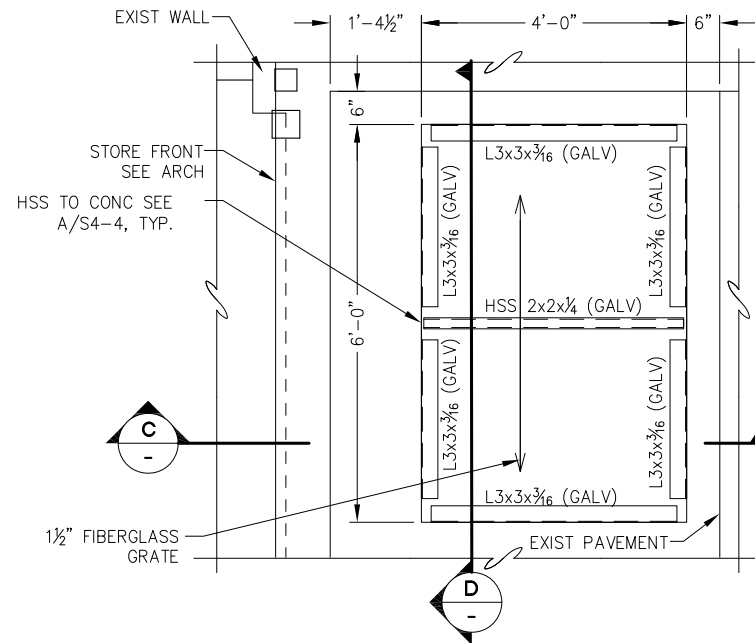
**1 MAIN ENTRY CANOPY  
FOUNDATION ROOF PLAN**

**NOTE:**  
1. CONNECT STEEL DECK TO SUPPORTING STEEL W/ HILTI XEDN 19 FASTENERS, 7 PER 36" WIDE SHEET. WHERE FLUTES ARE PERPENDICULAR TO SUPPORT AND AT 12" O.C. WHERE FLUTES ARE PARALLEL W/ SUPPORT. CONNECT ADJACENT PANELS WITH VECO SIDE LAP PUNCH LOCK CONNECTION @ 12" O.C.

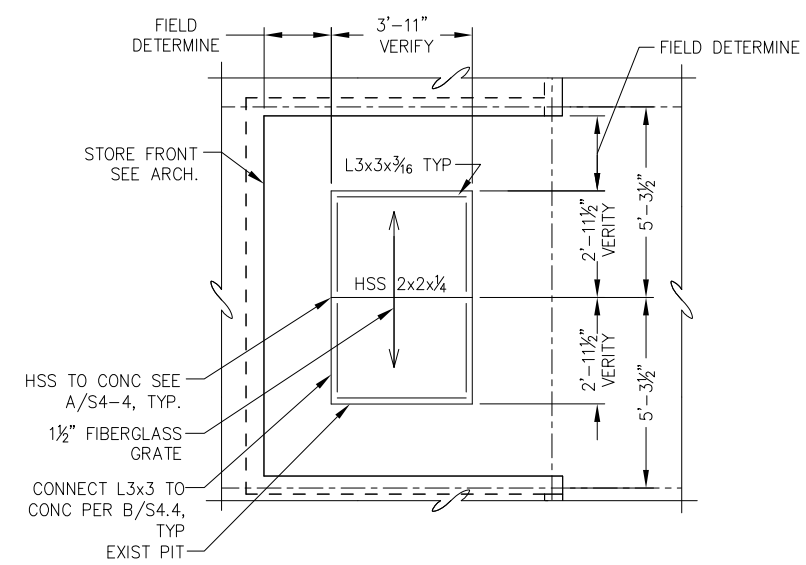




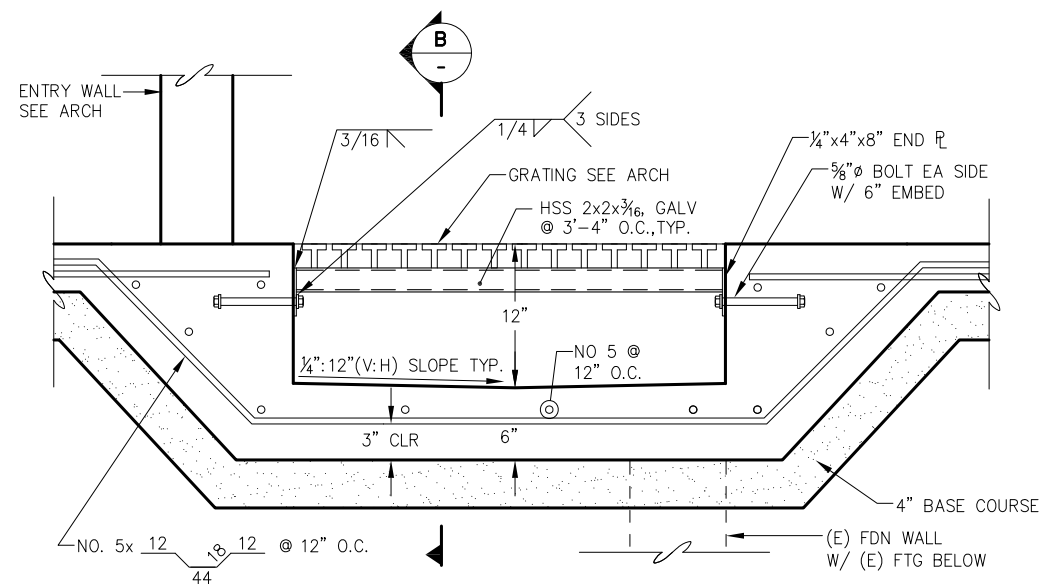
1 ENTRY PIT/GRATE



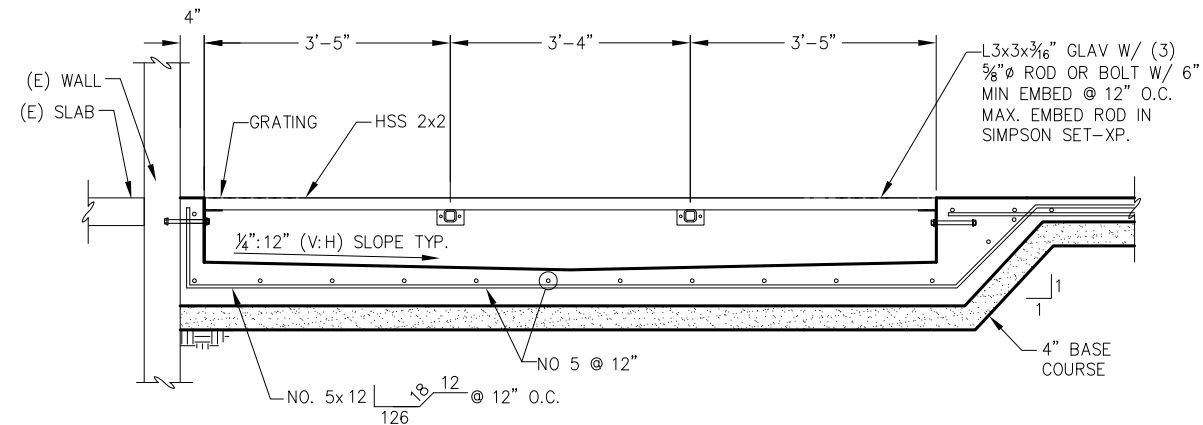
2 GRATING - PIT AT DOOR 145



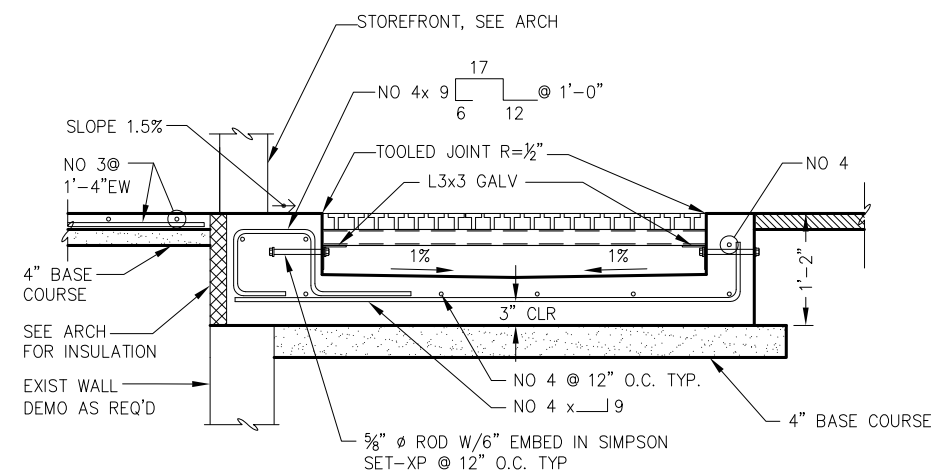
3 GRATING AT DOOR 101



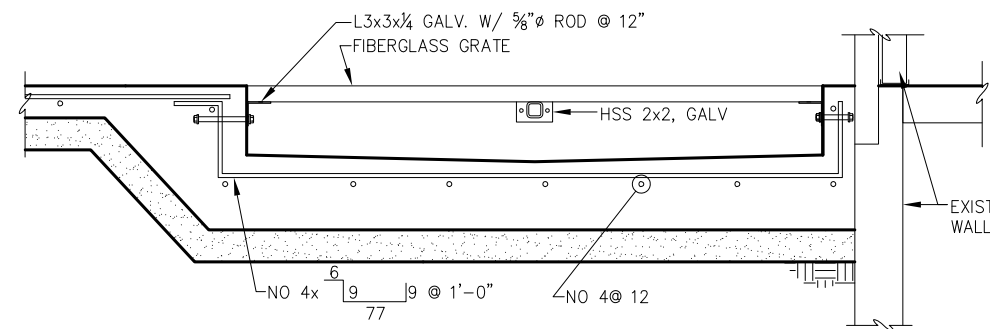
A GRATE / PIT SECTION



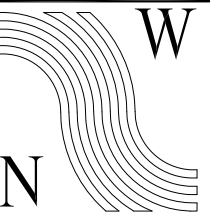
B GRATE / PIT SECTION



C SECTION AT DOOR



D SECTION AT DOOR



**NorthWind Architects LLC**

119A 2ND ST.  
JUNEAU, AK 99801  
PH #907.586.6150  
FX #907.586.6181  
WWW.NORTHWINDARCH.COM

**P N D**  
**ENGINEERS, INC.**  
9360 Glacier Highway, Ste 100  
Juneau, Alaska 99801  
Phone: 907.586.2093  
Fax: 907.586.2099  
PND # 092078

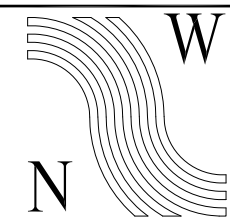
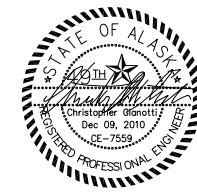
**GASTINEAU ELEMENTARY SCHOOL**  
**RENOVATION**  
CBJ Contract No. E11-157  
JUNEAU, ALASKA

SHEET TITLE:  
**MAIN ENTRY CANOPY  
FOUNDATION  
DETAILS**

DATE: NOV. 15, 2010  
REVISION: .....  
CHECKED BY: CMG  
DRAWN: KLL

SHEET #

**S4.4**



**NorthWind Architects LLC**

119A 2ND ST.  
JUNEAU, AK 99801  
PH #907.586.6150  
FX #907.586.6181  
WWW.NORTHWINDARCH.COM

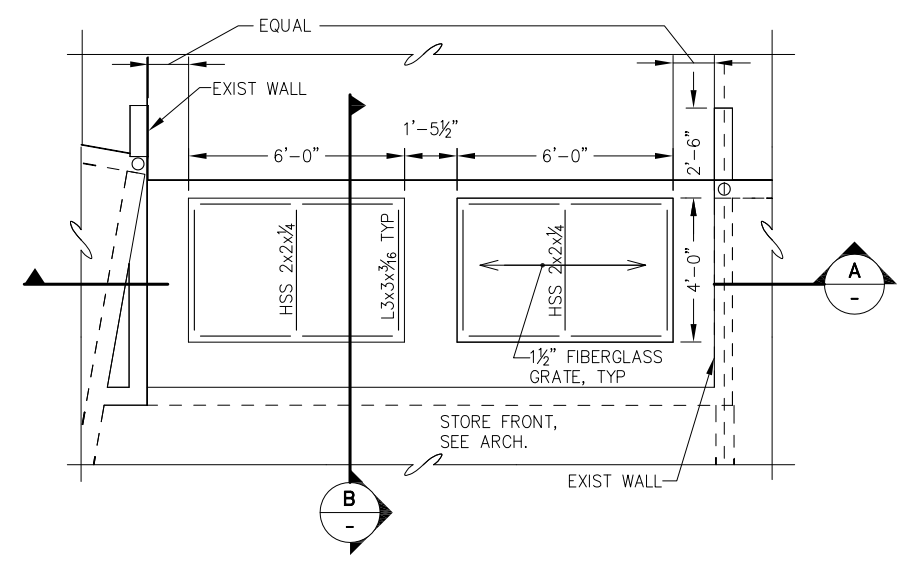
**P N D**  
**ENGINEERS, INC.**  
9360 Glacier Highway, Ste 100  
Juneau, Alaska 99801  
Phone: 907.586.2093  
Fax: 907.586.2099  
PND # 092078

**GASTINEAU ELEMENTARY SCHOOL**  
**RENOVATION**  
CBJ Contract No. E11-157  
JUNEAU, ALASKA

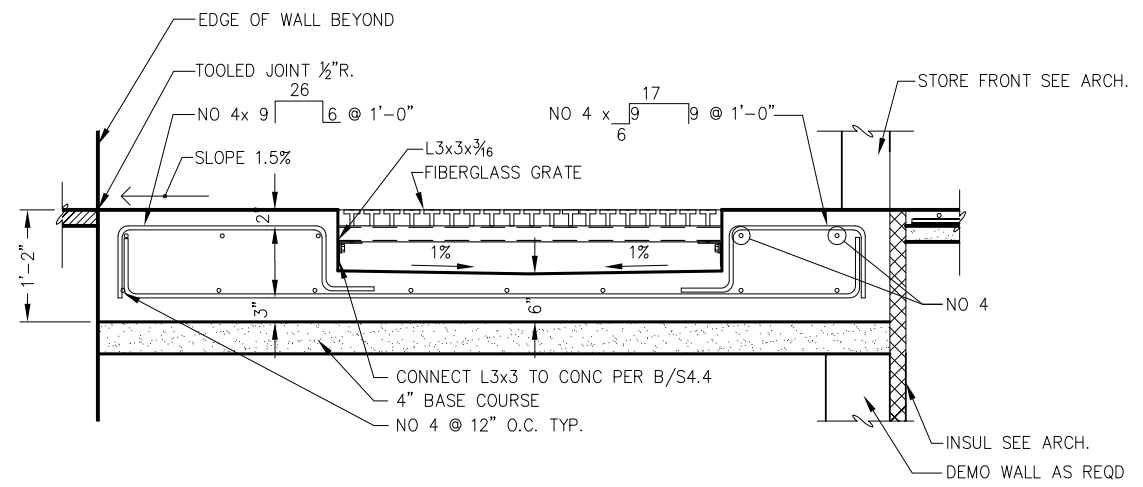
SHEET TITLE:  
**MAIN ENTRY CANOPY  
FOUNDATION  
DETAILS**

DATE: NOV. 15, 2010  
REVISION: ....  
CHECKED BY: CMG  
DRAWN: KLL

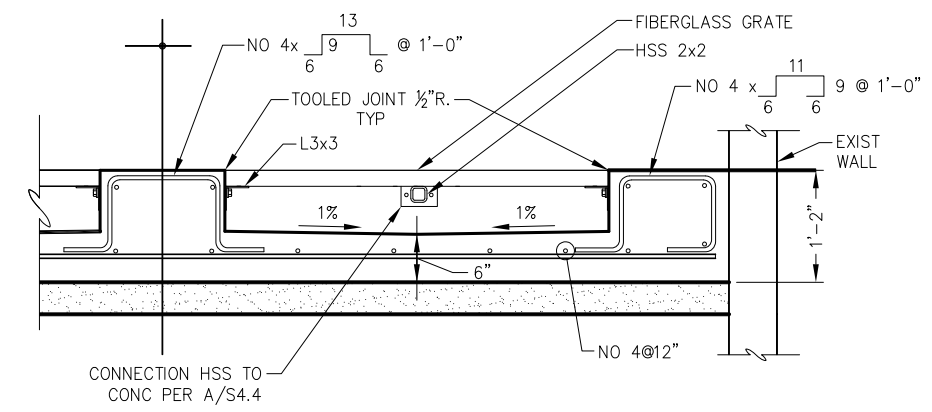
SHEET #  
**S4.5**



**1 GRATE - PITS AT FOYER**  
**117**



**B SECTION AT FOYER**



**A SECTION AT FOYER**