



ADDENDUM TO THE CONTRACT

for the

Gastineau Elementary School Renovation

Contract No. E11-137

ADDENDUM NO.: FOUR

CURRENT DEADLINE FOR BIDS:
December 21, 2010

PREVIOUS ADDENDA: THREE

ISSUED BY: City and Borough of Juneau
ENGINEERING DEPARTMENT
155 South Seward Street
Juneau, Alaska 99801

DATE ADDENDUM ISSUED: December 13, 2010

The following items of the contract are modified as herein indicated. All other items remain the same. This is a faxed addendum. A confirming copy will not be mailed to you. If this fax is incomplete, please call (907) 586-0490, and we will re-send it. This addendum has been issued and is posted online. Please refer to the CBJ Engineering Contracts Division webpage at:
<http://www.juneau.org/engineering ftp/contracts/Contracts.php>

PROJECT MANUAL – VOLUME II:

Item No. 1: SECTION 15410 – PLUMBING FIXTURES, PART 2 – PRODUCTS, Article 2.7 WASH FOUNTAINS (WF-1 FLOOR MOUNTED, WF-2 WALL MOUNTED AT PRIMARY HEIGHT), paragraph B: ***Delete and replace with the following:***

“B. Bowls

1. WF-1 Semi circular, 54 inch diameter, floor mounted, pre cast stone.
2. WF-2: Semi circular, 36 inch diameter, wall mounted, precast stone, mounting plate.”

Item No. 2 SECTION 15410 – PLUMBING FIXTURES, PART 3 – EXECUTION, Article 3.3 INSTALLATION, paragraph E: ***Add to the end of paragraph the following:***

“Sealant shall have a convex bead in order to prevent water from accumulating on the finished surface.”

Item No. 3 SECTION 15410 – PLUMBING FIXTURES, PART 3 – EXECUTION, Article 3.3 INSTALLATION, ***Add the following paragraph G:***

“G. All trip levers for ADA type, such as water closets and urinals, are to be coordinated with ADA code requirements for proper accessible side location and configuration.”

Item No. 4 SECTION 15410 – PLUMBING FIXTURES, PART 3 – EXECUTION, Article 3.3 INSTALLATION, ***Add the following paragraph H:***

"H. Stops installed in each supply pipe at each fixture, accessibly located. Exposed stops of the loose key type, unless screwdriver type is specified, with threaded chrome-plated brass nipple and escutcheon. Where stops are not specified with the fixture, standard globe or angle valves shall be used, located in accessible, concealed space *such as cabinetwork, pipe spaces, or unfinished rooms.*"

- Item No. 5 SECTION 15410 – PLUMBING FIXTURES, PART 3 – EXECUTION, Article 3.3 INSTALLATION, **Add the following paragraph I:**

"I. Wall hung closet carriers suitable for the space provided, and installed with seal on faceplate joint."

- Item No. 6 SECTION 15410 – PLUMBING FIXTURES, PART 3 – EXECUTION, Article 3.3 INSTALLATION, **Add the following paragraph J:**

"J. Suitable protective cover placed over fixtures immediately after installation. Damaged fixtures replaced at no additional cost to the OWNER."

- Item No. 7 SECTION 15410 – PLUMBING FIXTURES, PART 3 – EXECUTION, Article 3.5 ADJUSTING, **Add the following paragraph C:**

"C. Adjust and verify in writing that main thermostatic mixing valve has been set to 120 degree F."

- Item No. 8 SECTION 15410 – PLUMBING FIXTURES, PART 3 – EXECUTION, Article 3.5, ADJUSTING, **Add the following paragraph D:**

"D. Verify in writing that the individual thermostatic mixing and pressure balancing control valves at the shower has been adjusted to supply a maximum of 110 degree F."

- Item No. 9 SECTION 15410 – PLUMBING FIXTURES, PART 3 – EXECUTION, Article 3.5, ADJUSTING, **Add the following paragraph E:**

"E. Verify in writing that the thermostatic mixing valves at the emergency eyewash and combination eyewash shower has been adjusted to supply a maximum of 80 degree F."

- Item No. 10 SECTION 15410 – PLUMBING FIXTURES, PART 3 – EXECUTION, Article 3.6 CLEANING,; paragraph A **Add the following to the end of paragraph A:**

"immediately prior to substantial completion."

- Item No. 11 SECTION 15820 – DUCT ACCESSORIES, PART 2 – PRODCUTS, Article 2.4 DUCT MOUNTED FILTER BOX,; paragraph A Filter Box,;

1. **Change** "24 x 24" to "24x36"

- Item No. 12 SECTION 15820 – DUCT ACCESSORIES, PART 2 – PRODCUTS, Article 2.4 DUCT MOUNTED FILTER BOX,; paragraph C Filter Media,;

1. **Change** "24 x 24" to "24x36"

Item No. 13 SECTION 15926 – BUILDING AUTOMATION SYSTEM AND AUTOMATIC CONTROLS, PART 1 – GENERAL, Article 1.3 SYSTEM DESCRIPTION,: paragraph A SCOPE OF WORK, subparagraph 5

2. **Delete** the last sentence of paragraph 5 in it's entirety that starts "The distributed DDC equipment
3. **Add** sentence to the end of paragraph 5 as follows:
 - a. "The distributed DDC equipment new and existing shall be networked to a UNC Global Digital Controller with BACNet capabilities and connect to District's central operators station (Host) to provide complete facility management. Provide compatible graphics package for new and all existing controls"

DRAWINGS – VOLUME III

Item No. 14 SHEET TITLED M0.1 - SCHEDULES & SYMBOLS

***Replace** sheet in its entirety with M0.1 included with addendum. This sheet replaced to correct sheet schedule.*

Item No. 15 SHEET TITLED M0.2 - SCHEDULES

1. **Change** Booster Coil Schedule BC-10 line under column Area Served as follows:
 - a. Change Second 122 to 123.
2. **Add** row to end of HEATING UNIT SCHEDULE to read as follows.
 - a. "CONVECTOR CV-1, RITTILING, TYPE SL, 12.0 MBH 48 x32 x 6 INCH DIMENSION WALL MOUNTED SLOPING TOPPED CONVECTOR. DELTA T 20F, 60F EAT, 200F EWT. FINISH COLOR SELECTED BY ARCHITECT."
3. **Change** Heat Recovery – Exhaust Coil (HRC-A) Schedule size of (LxH) column.
 - a. HRC-1A "24x36"
 - b. HRC-2A "24x36"
4. **Change** Heat Recovery – Exhaust Coil (HRC-A) Schedule ROWS/FPI column.
 - a. HRC-1A "3/8"
 - b. HRC-2A "4/6"
5. **Change** Heat Recovery – AHU Preheat Coil (HRC-B) Schedule row HRC-1B, column Row/FPI.
 - a. **Change** 16 FPI to 6 FPI.

Item No. 16 SHEET TITLED M0.3 - SCHEDULES:

1. **Modify** Diffuser and Grille Schedule:
 - a. **Change** CLASSROOM 111 line as follows:
 - i. **Change** SG-2 to "SG-4"
2. **Modify** Diffuser and Grille Schedule:
 - a. **Change** JANITOR 119 line as follows:
 - i. **Change** under column heading NUMBER after the EG-1 from" – " to "1"
3. **Modify** Diffuser and Grille Schedule:
 - a. **Change** ALT WORK OFFICE/CR 125 to read as follows:
 - i. **"*ALT WORK OFFICE/CR 125"**
4. **Modify** Diffuser and Grille Schedule:
 - a. **Change** BASE BID WORK OFFICE/CR 125 to read as follows:
 - i. **"*BASE BID OFFICE/CR 125"**
5. **Delete** from Diffuser and Grille Schedule:

- a. **Delete** complete line, all columns for GYM ENTRY 158:
6. **Modify** Diffuser and Grille Schedule:
 - a. **Change** GYM OFFICE 159A to read as follows:
 - i. "GYM OFFICE 159D"
7. **Add** to Diffuser and Grille Schedule NOTE at the bottom of schedule the following:
 - a. "* DO NOT INCLUDE OFFICE /CR 125 BASE BID DIFFUSER & GRILLE QUANTITY WHEN CALCULATING ALT WORK."

Item No. 17 SHEET TITLED M0.4 - SCHEDULES:

1. **Change** flowsetter #15A under column UNIT SERVED from "FP-2" to "FP-1".
2. **Change** flowsetter #20 under column UNIT SERVED from "FP-1" to "FP-2"
3. **Change** flowsetter #24 under column UNIT SERVED from "FP-1" to "FP-2"
4. **Change** flowsetter #36 under column UNIT SERVED from "FP-2" to "FP-1"
5. **Change** flowsetter #37 under column UNIT SERVED from "FP-2" to "FP-1"
6. **Change** flowsetter #38 under column LOCATION to "A2R GROUP 163"
7. **Change** flowsetter #59 column LOCATION from "CORRIDOR 137" to "ADMIN 144"

Item No. 18 SHEET TITLED M0.8 – PHASING PLAN DUCTWORK AREA A & B:

1. **Move** in SP ED 135 north SG-3 south 4 feet..
2. **Move** in Speech 132 SG-3 southeast 2 feet.

Item No. 19 SHEET TITLED M1.01 – DEMOLITION PLAN DOMESTIC PIPING UNDERGROUND AREA A&B:

Replace sheet in its entirety with M1.01 included with addendum. This sheet replaced to correct base plan.

Item No. 20 SHEET TITLED M1.03 – DEMOLITION PLAN DOMESTIC PIPING UNDERGROUND AREA C:

Replace sheet in its entirety with M1.03 included with addendum. This sheet replaced to add grid lines references.

Item No. 21 SHEET TITLED M1.04 – DEMOLITION PLAN DOMESTIC PIPING UNDERGROUND AREA D:

1. **Delete and replace** B in a hex at Grid Line 3 and Q on leader note that reads 2"W with and E in a hex.
2. **Delete and replace** X in a hex at Grid Line 3 and O on leader note that reads 2"W with a B in a hex.
3. **Add** to leader note at Grid Line 3 and O that reads E in a hex 2"W: Construction note 1 in a box.
4. **Add** leader note pointing at B in hex $\frac{3}{4}$ "CW at Grid Line 1 and M that reads as follows:
 - a. "X in hex $\frac{3}{4}$ "CW 1 in a box"

Item No. 22 SHEET TITLED M1.11 – DEMOLITION PLAN DOMESTIC PIPING AREA A & B:

Replace sheet in its entirety with M1.11 included with addendum. This sheet replaced to correct base plan.

Item No. 23 SHEET TITLED M1.21 – DEMOLITION PLAN HEATING PIPING UNDERGROUND AREA A & B:

Replace sheet in its entirety with M1.21 included with addendum. This sheet replaced to correct base plan.

Item No. 24 SHEET TITLED M1.31 – DEMOLITION PLAN DUCTWORK AREA A & B:

Replace sheet in its entirety with M1.31 included with addendum. This sheet replaced to correct base plan.

Item No. 25 SHEET TITLED M1.41 – DEMOLITION PLAN ROOF AREA A & B:

Replace sheet in its entirety with M1.41 included with addendum. This sheet replaced to correct base plan.

Item No. 26 SHEET TITLED M1.44 – DEMOLITION PLAN ROOF AREA D:

Replace sheet in its entirety with M1.44 included with addendum. This sheet replaced to correct base plan.

Item No. 27 DRAWING TITLED M1.51 – DEMOLITION ENLARGED PLAN BOILER RM & FAN ROOM 200:

Clarification: The water meter and 3" CW header are to remain existing.

Item No. 28 SHEET TITLED M2.01 – DOMESTIC PIPING UNDERGROUND AREA A & B:

1. **Add** E in a hex to leader note and Grid Line A and 5.5 that reads "3" CW MAIN SEE CIVIL".
2. **Remove** connect to existing symbol at leader note at grid line A and 5.5.

Item No. 29 SHEET TITLED M2.03 –DOMESTIC PIPING UNDERGROUND AREA C:

Replace sheet in its entirety with M2.03 included with addendum. This sheet replaced to correct base plan.

Item No. 30 SHEET TITLED M2.04 –DOMESTIC PIPING UNDERGROUND AREA D:

Modify leader note at grid line 1.3 and M "A in a hex $\frac{3}{4}$ " CW" to read "B in a hex $\frac{3}{4}$ " CW".

Item No. 31 SHEET TITLED M2.11 – DOMESTIC PIPING AREA A & B:

Delete Construction Note 1 from Rally 157.

Delete $\frac{3}{4}$ " piping south of gym. Doors between gridline D&E & relocate leader to piping north of gym doors.

Delete plumbing fixture reference at grid line 5.25 and D, "GREASE SEPARATOR"
Clarification there is no grease separator in project.

Add new 3" RD & 3" ORD above Rally 157 near gridlines 5 & E. Connect new RD to existing storm piping. Route new ORD piping north with outflow above canopy.

Item No. 32 SHEET TITLED M2.13 – DOMESTIC PIPING AREA C:

1. **Change** plumbing fixture note at grid line 4 and I from WF-1 to WF-2.
2. **Change** plumbing fixture note at grid line 4 and J from WF-1 to WF-2.

Item No. 33 SHEET TITLED M2.21 – HEATING PIPING AREA A & B:

1. **Modify** leader note at grid line 6 and B “CUH-1” to read as follows: “Existing CUH”
2. **Modify** note at grid line 2 and B “CUH-2” to read as follows: “CUH-1”
3. **Move** CUH-1 at grid line 2 and B approximately four feet to plan north.
4. **Modify** note at grid line 1 and C “FP-2” to read as follows: “FP-1”
5. **Modify** note at grid line 1 and D “FP-2” to read as follows: “FP-1”
6. **Add** construction note 5 in a box at leader note that reads “Existing CUH” at grid line 6 and B.
7. **Add** construction note 5 to the end of the Construction notes to read as follows:
 - a. “5 in a box: REMOVE AND REINSTALL METAL COVER ON EXISTING CUH. CLEAN AND PAINT METAL CUH COVER WITH TWO COATS RUST PREVENTIVE PAINT MATCH FINISH COLORS SELECTED BY ARCHITECT.”

Item No. 34 SHEET TITLED M2.23 –HEATING PIPING AREA C:

Replace sheet in its entirety with M2.23 included with addendum. This sheet replaced to clarify base bid and alternate piping work.

Item No. 35 SHEET TITLED M2.41 – ROOF AREA A&B

1. **Delete** roof drain at grid line 5 and E plus. Roof drain to be deleted has leader note “E in a hex RD”.
2. **Add** leader note at grid line C and 1 pointing at roof drain at this location. Leader note to read as follows “4”RD”.
3. **Delete** circles at grid line 1 and A.
4. **Add** new 3” RD & 3” ORD at gridline 5 & E plus.

Item No. 36 SHEET TITLED M2.43 – ROOF AREA C:

1. **Move** leader note at grid line 2 and midpoint between J and K to read “3” RD-1” to point at south roof drain (circle inside a box).
2. **Add** leader note at grid line 2 and midpoint J and K to read “3”ORD-1” point to north roof drain (circle inside of box)
3. **Delete** double circles at Gridline 2 and towards J.
4. **Delete** double circles at Grid line 2 and toward K.
5. **Delete** leader note at Grid line 2 and K that reads “3”RD”

Item No. 37 SHEET TITLED M3.1– DUCTWORK AREA A & B:

Replace sheet in its entirety with M3.1 included with addendum. This sheet replaced to clarify ductwork routing above ADMIN 144

Item No. 38 SHEET TITLED M4.1– BUILDING SECTION GRID LINE 2:

- Add** leader note pointing to the base of the AHU-1 to read as follows:
- a. “Concrete housekeeping pad under AHU-1. See Structural plans for installation details.”

Item No. 39 SHEET TITLED M4.2– BUILDING SECTION - GRID LINE H & J:

Delete and replace leader note that reads “R in a hex WSPR” to read as follows: “WSPR”.
Two locations, one above Corridor 103 and one above Corridor 137. WSPR main is intended to be new piping.

Item No. 40 SHEET TITLED M5.2 – ENLARGED FAN ROOM (NEW)

Change leader note between mixing tank & condenser on drawing 2/M5.2 that reads “2”V” to read as follows:

a. “2”V up to 3”VTR” SEE DETAIL 5 ON SHEET M7.2”:

Item No. 41 SHEET TITLED M6.2– ENLARGED PLAN TOILET RM 141 & 142 PLUMBING DIAGRAM:

Add information to PLUMBING FIXTURE CONNECTION schedule in column for FIXTURE; add to end of sentence, “,WF-2”.

Item No. 42 SHEET TITLED M6.3 – ENLARGED PLAN TOILET 156 STORAGE 155B PLUMBING DIAGRAM

1. **Add** Kitchen Equipment call out number #23 to the north of Kitchen Equipment call out #24.
2. **Clarification:** 1/2” HW and CW piping to faucet at Vegi Prep Sink Equipment #27 is to be routed down the utility column located by the Food Service Equipment drawings. Coordinate location and routing.

Item No 43 SHEET TITLED M7.3– DIAGRAMS AND DETAILS:

Add sheet in its entirety.



By: _____
Jennifer Mannix,
Contract Administrator

Date: December 13, 2010

Total number of pages contained within this Addendum: 7 plus 12 Drawings

AAV AUTOMATIC AIR VENT
AC AIR CONDITIONING UNIT
AD-1 AREA DRAIN
AFF ABOVE FINISHED FLOOR
AHU AIR HANDLING UNIT
AMS AIR MONITORING STATION
ARV AUTOMATIC RADIATOR VALVE
AV AUTOMATIC VALVE
B BUTTERFLY DAMPER
BAS BUILDING AUTOMATION SYSTEM
BBD BACK BLADE DAMPER
BC BOOSTER COIL
BDD BACK DRAFT DAMPER
BFP BACK FLOW PREVENTER
C COMMON
CCU COMPRESSOR-CONDENSER UNIT
CAD-1 COMBUSTION AIR DAMPER
CFM CUBIC FEET PER MINUTE
CI CAST IRON
CO CLEANOUT
CUH CABINET UNIT HEATER
CV CONVECTOR
DA DAMPER ACTUATOR
DF DRINKING FOUNTAIN
DG-1 DOOR GRILLE
DI DUCTILE IRON
DS DOUBLE SINK
DU DIELECTRIC UNION
DV DRAIN VALVE
DW DISHWASHER
EA EXHAUST AIR
EAD EXHAUST AIR DAMPER
EAT ENTERING AIR TEMPERATURE
EF EXHAUST FAN
EG EXHAUST GRILLE
ESP EXTERNAL STATIC PRESSURE
ET EXPANSION TANK
EW-1 EMERGENCY EYEWASH
EWSH-1 EMERGENCY EYEWASH/SHOWER
EWT ENTERING WATER TEMPERATURE
FCO FLOOR CLEANOUT
FD FLOOR DRAIN
FHC FIRE HOSE CABINET
FLD FUSIBLE LINK FIRE DAMPER
FP FINNED PIPE
FRD FIRE RATED DAMPER
FS FLOOR SINK
HB HOSE BIBB
HC HEATING COIL
HP HEAT PUMP
HRC HEAT RECOVERY COIL
HWH-1 HOT WATER HEATER
HWRP HOT WATER RECIRCULATING PUMP
HWT HOT WATER TANK
HX HEAT EXCHANGER
IAW IN ARCHITECTURAL WORK
IEW IN ELECTRICAL WORK
ICW IN CIVIL WORK
INV. EL. INVERT ELEVATION
IPS IRON PIPE SIZE
KW KILOWATT
L LAVATORY
LAT LEAVING AIR TEMPERATURE
LF LINEAL FEET
LL LOW LIMIT
LWCO LOW WATER CUTOFF
LWT LEAVING WATER TEMPERATURE
MA MIXED AIR
MAF MAKE-UP AIR FAN
MAT MIXED AIR TEMPERATURE
MAV MANUAL AIR VENT
MB MULTIBLAD DAMPER
MBH 1,000 BTU PER HOUR
NC NORMALLY CLOSED
NF NON-FREEZE
NIC NOT IN CONTRACT
NIM NOT IN MECHANICAL
NO NORMALLY OPEN
OAD OUTSIDE AIR DAMPER
O.C. ON CENTER
OSA OUTSIDE AIR
OSV OIL SAFETY VALVE
P PUMP
PSI POUNDS PER SQUARE INCH
RA RETURN AIR
RAD RECIRCULATING AIR DAMPER
RAT RETURN AIR THERMOSTAT

WSPR WET SPRINKLER
GS GLYCOL SUPPLY
GR GLYCOL RETURN
HS HEATING SUPPLY
HR HEATING RETURN
OS OIL SUCTION
OR OIL RETURN
RS REFRIGERANT SUCTION
RL REFRIGERANT LIQUID
SPR SPRINKLER
GATE VALVE
CHECK VALVE
UNION
AV AUTOMATIC VALVE
FLOWSETTER W/NO.
GLOBE VALVE OR ISOLATING BALL VALVE
BALL VALVE
RISING STEM GATE VALVE
RISING STEM GATE VALVE WITH VALVE SWITCH
DV DRAIN VALVE
PITCHED DOWN
REDUCER
CAPPED OR PLUGGED
STRAINER
CO CLEANOUT
FCO FLOOR CLEANOUT
TEST PORT/PLUG
WATER FEEDER
UPRIGHT SPRINKLER HEAD
PENDENT SPRINKLER HEAD
RECESSED PENDENT SPRINKLER HEAD
SIDEWALL SPRINKLER HEAD
P-1 PUMP
SAFETY OR RELIEF VALVE
BLOWDOWN WYE VALVE
FLEXIBLE CONNECTION

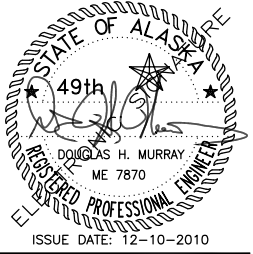
RD ROOF DRAIN/RAIN LEADER
REF REFRIGERATOR
RF RETURN FAN
RG RETURN GRILLE
RHC REHEAT COIL
RI ROUGH IN
RL REFRIGERANT LIQUID
RPBP REDUCED PRESSURE BACKFLOW PREVENTER
RS REFRIGERANT SUCTION
S SINK
SA SUPPLY AIR
SAT SUPPLY AIR THERMOSTAT
SF SUPPLY FAN
SG SUPPLY GRILLE
SH SHOWER
SS SERVICE SINK
T&P TEMPERATURE AND PRESSURE RELIEF VALVE
TEF TOILET EXHAUST FAN
TMB TERMINAL MIXING BOX
TP TRAP PRIMER
TSP TOTAL STATIC PRESSURE
TYP TYPICAL
U URINAL
UH UNIT HEATER
UON UNLESS OTHERWISE NOTED
VA VALVE ACTUATOR
VAV VARIABLE AIR VOLUME BOX
VB VACUUM BREAKER
VD VOLUME DAMPER
VFD VARIABLE FREQUENCY DRIVE
VI VIBRATION ISOLATORS
VTR VENT THROUGH ROOF
VU VENTILATION UNIT
W/D WASHER/DRYER
WB WASHER BOX
WC WATER CLOSET
WCO WALL CLEAN OUT
WF-1 WASH FOUNTAIN
WH WALL HYDRANT
WHA WATER HAMMER ARRESTOR
WSP WET STAND PIPE
YCO YARD CLEANOUT

SYMBOLS

SAFETY OR RELIEF VALVE
BLOWDOWN WYE VALVE
FLEXIBLE CONNECTION
POINT OF CONNECTION OR REMOVAL
CONSTRUCTION NOTE
THERMOSTAT - IMMERSION, ROOM
THERMOMETER
VACUUM GAGE
PRESSURE GAGE
PRESSURE SWITCH
SMOKE DETECTOR
FIRE ALARM FLOW SWITCH
DIFFERENTIAL PRESSURE SWITCH
CONTROL SWITCH
DIAMETER
CENTER LINE
ACCESS DOOR
TO BE ABANDONED
EXISTING
BELOW FLOOR
IN JOIST SPACE
TO BE RELOCATED
TO BE REMOVED
CONCRETE WALL
INSULATED DUCT
MANUAL BUTTERFLY DAMPER
FIRE RATED/SMOKE DAMPER
FLEXIBLE DUCT
AIR VOLUME
DIFFUSER/GRILLE SIZE
CEILING RETURN/EXHAUST GRILLE
CEILING SUPPLY DIFFUSER
RECTANGULAR TO ROUND DUCT TRANSITION
RETURN/EXHAUST DUCT UP, DOWN
SUPPLY DUCT UP, DOWN
WALL SUPPLY GRILLE
LINE BREAK
EXISTING, DEMOLISHED, NEW
PIPING, DUCTWORK, EQUIPMENT

Sheet List Table

Sheet Number	Sheet Title
M0.1	SCHEDULES & SYMBOLS
M0.2	SCHEDULES
M0.3	SCHEDULES
M0.4	SCHEDULES
M0.5	PHASING PLAN DOMESTIC PIPING UNDERGROUND AREA A&B
M0.6	PHASING PLAN DOMESTIC PIPING AREA A&B
M0.7	PHASING PLAN HEATING PIPING AREA A&B
M0.8	PHASING PLAN DUCTWORK AREA A&B
M0.9	PHASING PLAN BOILER ROOM
M1.01	DEMOLITION PLAN DOMESTIC PIPING UNDERGROUND AREA A&B
M1.02	NOT USED
M1.03	DEMOLITION PLAN DOMESTIC PIPING UNDERGROUND AREA C
M1.04	DEMOLITION PLAN DOMESTIC PIPING UNDERGROUND AREA D
M1.11	DEMOLITION PLAN DOMESTIC PIPING AREA A&B
M1.12	NOT USED
M1.13	DEMOLITION PLAN DOMESTIC PIPING AREA C
M1.14	DEMOLITION PLAN DOMESTIC PIPING AREA D
M1.21	DEMOLITION PLAN HEATING PIPING AREA A&B
M1.22	NOT USED
M1.23	DEMOLITION PLAN HEATING PIPING AREA C
M1.24	DEMOLITION PLAN HEATING PIPING AREA D
M1.31	DEMOLITION PLAN DUCTWORK AREA A&B
M1.32	NOT USED
M1.33	DEMOLITION PLAN DUCTWORK AREA C
M1.34	DEMOLITION PLAN DUCTWORK AREA D
M1.41	DEMOLITION PLAN ROOF AREA A&B
M1.42	NOT USED
M1.43	DEMOLITION PLAN ROOF AREA C
M1.44	DEMOLITION PLAN ROOF AREA D
M1.51	DEMOLITION ENLARGED PLAN - BOILER RM & FAN RM 200
M1.52	DEMOLITION ENLARGED PLAN - LIBRARY FAN RM
M1.61	DEMOLITION EXISTING VU HEAT COILS PIPING DIAGRAMS
M2.01	DOMESTIC PIPING UNDERGROUND AREA A&B
M2.02	NOT USED
M2.03	DOMESTIC PIPING UNDERGROUND AREA C
M2.04	DOMESTIC PIPING UNDERGROUND AREA D
M2.11	DOMESTIC PIPING AREA A&B
M2.12	NOT USED
M2.13	DOMESTIC PIPING AREA C
M2.14	DOMESTIC PIPING AREA D
M2.21	HEATING PIPING AREA A&B
M2.22	NOT USED
M2.23	HEATING PIPING AREA C
M2.24	HEATING PIPING AREA D
M2.41	ROOF AREA A&B
M2.42	NOT USED
M2.43	ROOF AREA C
M2.44	ROOF AREA D
M2.61	VU HEAT COILS PIPING DIAGRAMS
M3.1	DUCTWORK AREA A&B
M3.2	NOT USED
M3.3	DUCTWORK AREA C
M3.4	DUCTWORK AREA D
M4.1	BUILDING SECTION-GRID LINE 2
M4.2	BUILDING SECTION-GRID LINES H & J
M4.3	BUILDING SECTION-GRID LINES N & O
M4.4	BUILDING SECTION-GRID LINES N & R
M4.5	BUILDING SECTION-GRID LINE M
M4.6	BUILDING SECTION-GRID LINE E
M4.7	BUILDING SECTION-GRID LINE 4
M5.1	ENLARGED PLANS FAM RMS 201 & 201A LOWER & UPPER
M5.2	ENLARGED PLAN-FAN ROOM 203 UPPER & LOWER
M5.3	ENLARGED PLAN-BOILER RM 152 UPPER & LOWER
M5.4	ENLARGED PLAN-FAN ROOM 202
M6.1	BOILER ROOM PIPING DIAGRAM
M6.2	ENLARGED PLANS & PLUMBING DIAGRAM-TOILET RMS 141 & 142
M6.3	ENLARGED PLANS & PLUMBING DIAGRAM-TOILET RM 156 & KITCHEN 155
M6.4	ENLARGED PLANS & PLUMBING DIAGRAM-TOILET RMS 122 & 123, 118, 119
M6.5	ENLARGED PLAN & PLUMBING DIAGRAM-SPEC ED 135C, STAFF LOUNGE 115
M6.6	ENLARGED PLAN & PLUMBING DIAGRAM-TOILET 124B&129B, TYP SINK
M7.1	DIAGRAMS & DETAILS
M7.2	DIAGRAMS & DETAILS
M7.3	DIAGRAMS & DETAILS
M8.1	CONTROLS
M8.2	CONTROLS



NorthWind Architects LLC
119A 2ND ST.
JUNEAU, AK 99801
PH #907.586.6150
FX #907.586.6181
WWW.NORTHWINDARCH.COM

MURRAY & ASSOCIATES, P. C.
CONSULTING ENGINEERS
P O BOX 21081 TEL: 907 780-6151
JUNEAU, ALASKA 99802 FAX: 907 780-6182

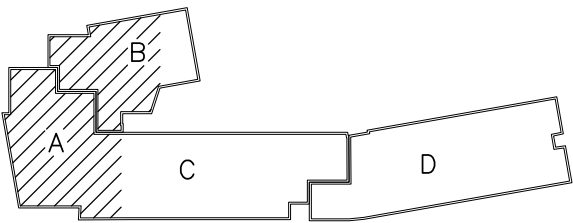
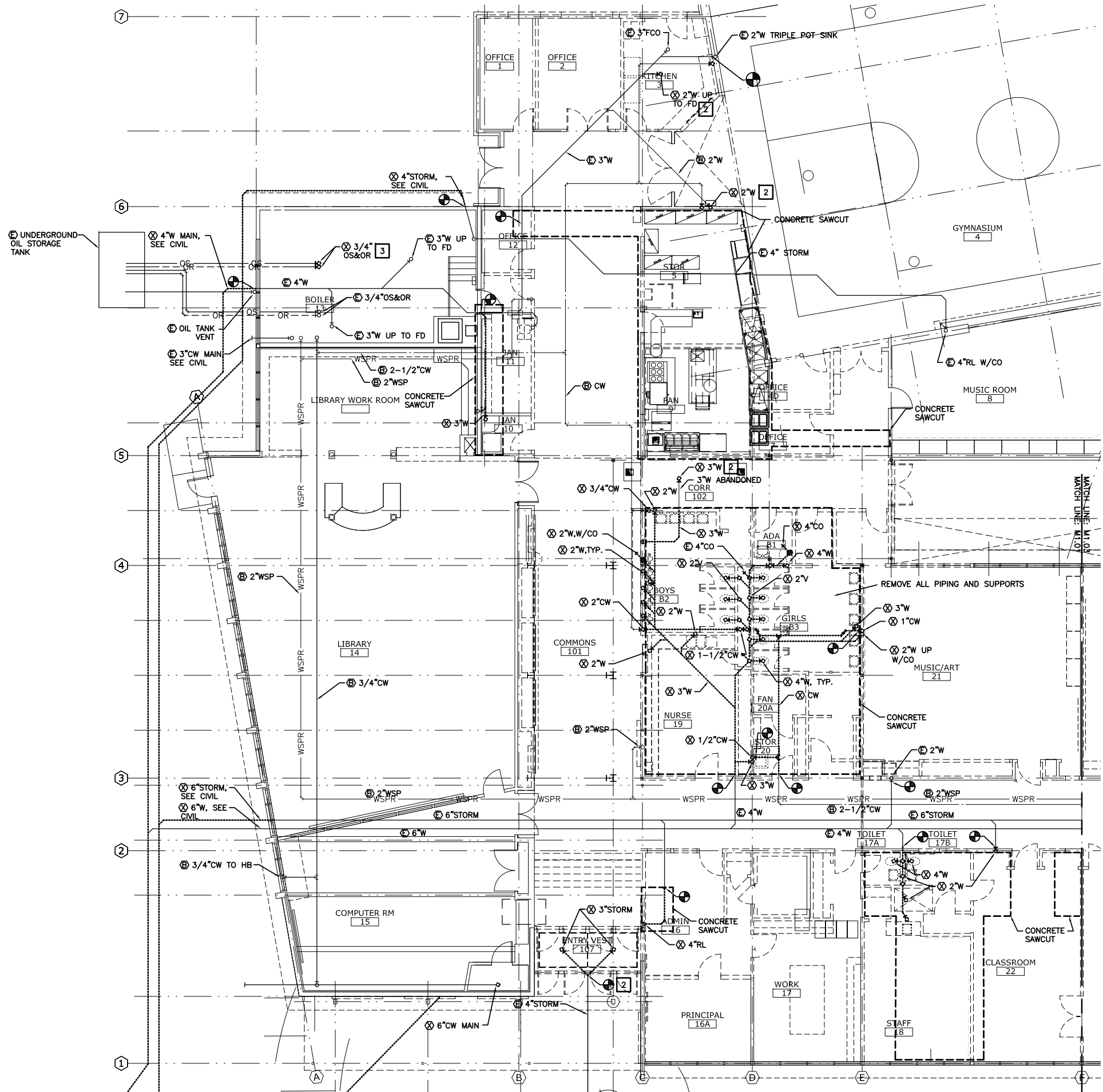
GASTINEAU ELEMENTARY SCHOOL
RENOVATION
CBJ Contract No. E11-137
JUNEAU, ALASKA

SHEET TITLE:
SCHEDULES &
SYMBOLS

DATE: NOV 15, 2010
REVISION:
CHECKED BY: DM
DRAWN: KB, LH

SHEET #

M0.1



KEY PLAN

SHEET NOTES:

1. PIPING SHOWN IS TAKEN FROM CONSTRUCTION DOCUMENTS, NOT ONSITE OBSERVATIONS.

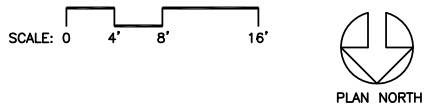
CONSTRUCTION NOTES:

1. ~~CLEAN OUT STORM DRAIN PIPING WITH MECHANICAL DEVICE. CAMERA PIPING WHEN DONE AND PROVIDE FIELD REPORT OF CONDITION.~~

2. PLUG PIPE WATERTIGHT.

3. CAP 3/4" OS & OR PIPING FINISH SMOOTH WITH FINISHED FLOOR.

1 DEMOLITION PLAN DOMESTIC PIPING UNDERGROUND AREA A&B ADDENDUM



119A 2ND ST.
JUNEAU, AK 99801
PH #907.586.6150
FX #907.586.6181
WWW.NORTHWINDARCH.COM

MURRAY & ASSOCIATES, P. C.
CONSULTING ENGINEERS

P.O. BOX 21081 TEL: 907 780-6151
JUNEAU, ALASKA 99802 FAX: 907 780-6182

GASTINEAU ELEMENTARY SCHOOL
RENOVATION
CBJ Contract No. E11-137
JUNEAU, ALASKA

SHEET TITLE:
DEMOLITION PLAN DOMESTIC PIPING UNDERGROUND AREA A&B

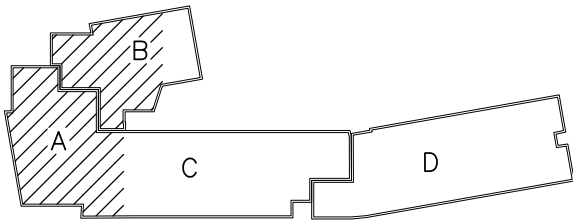
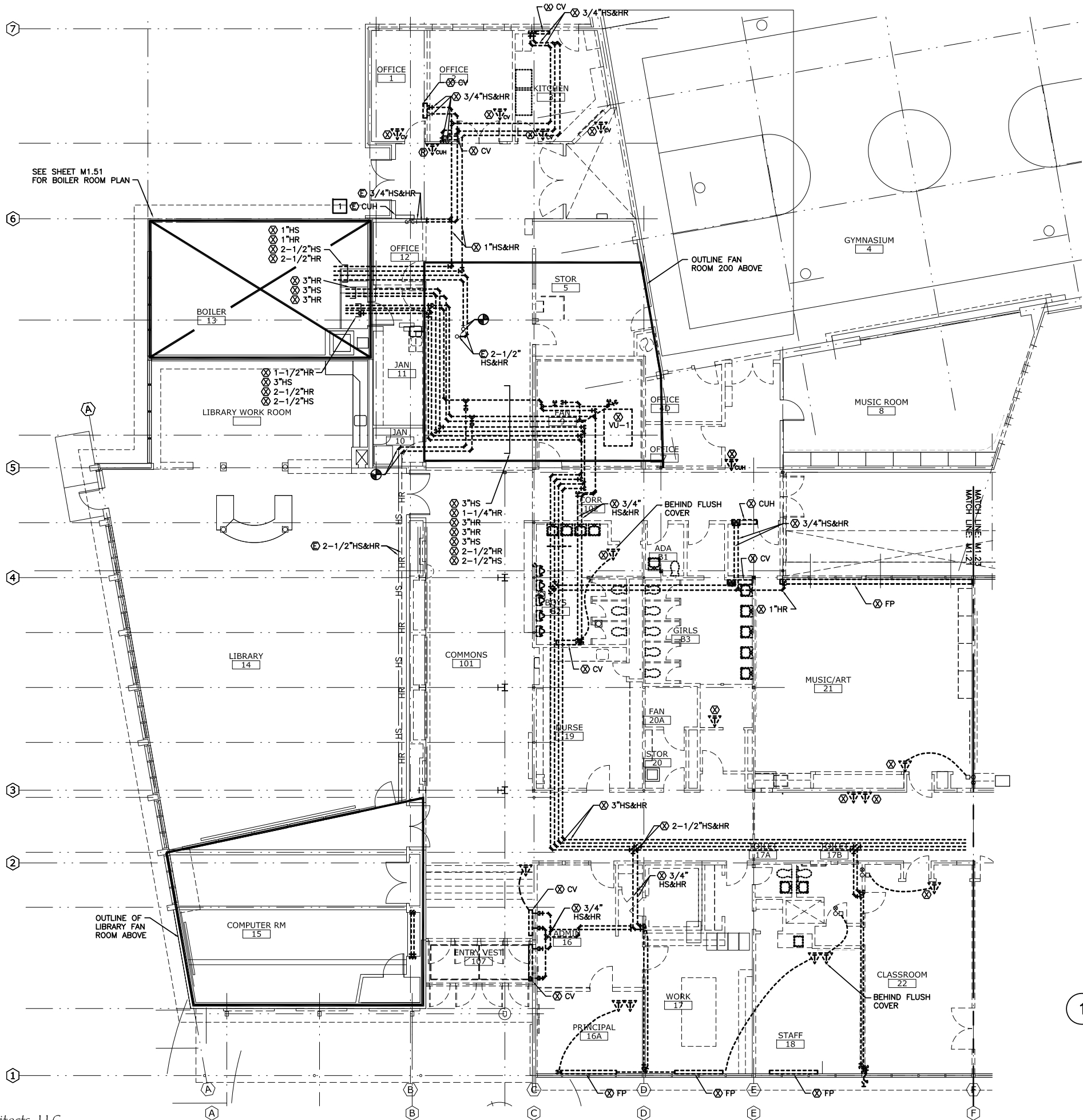
DATE: NOV 15, 2010
REVISION:
CHECKED BY: DM
DRAWN: KB, LH

SHEET #
M1.01



SHEET #

M1.03



KEY PLAN

CONSTRUCTION NOTES:

1 EXISTING CUH TO REMAIN. CHECK CUH FOR OPERATION. REPORT ANY DEFICIENCIES TO PROJECT MANAGER. PREPARE CUH FOR PAINTING TO MATCH NEW FINISHES. COORDINATE WORK.

1 DEMOLITION PLAN HEATING PIPING AREA A&B ADDENDUM

SCALE: 0 4' 8' 16'

PLAN NORTH



NorthWind Architects LLC
119A 2ND ST.
JUNEAU, AK 99801
PH #907.586.6150
FX #907.586.6181
WWW.NORTHWINDARCH.COM

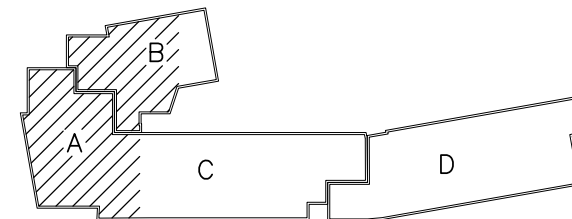
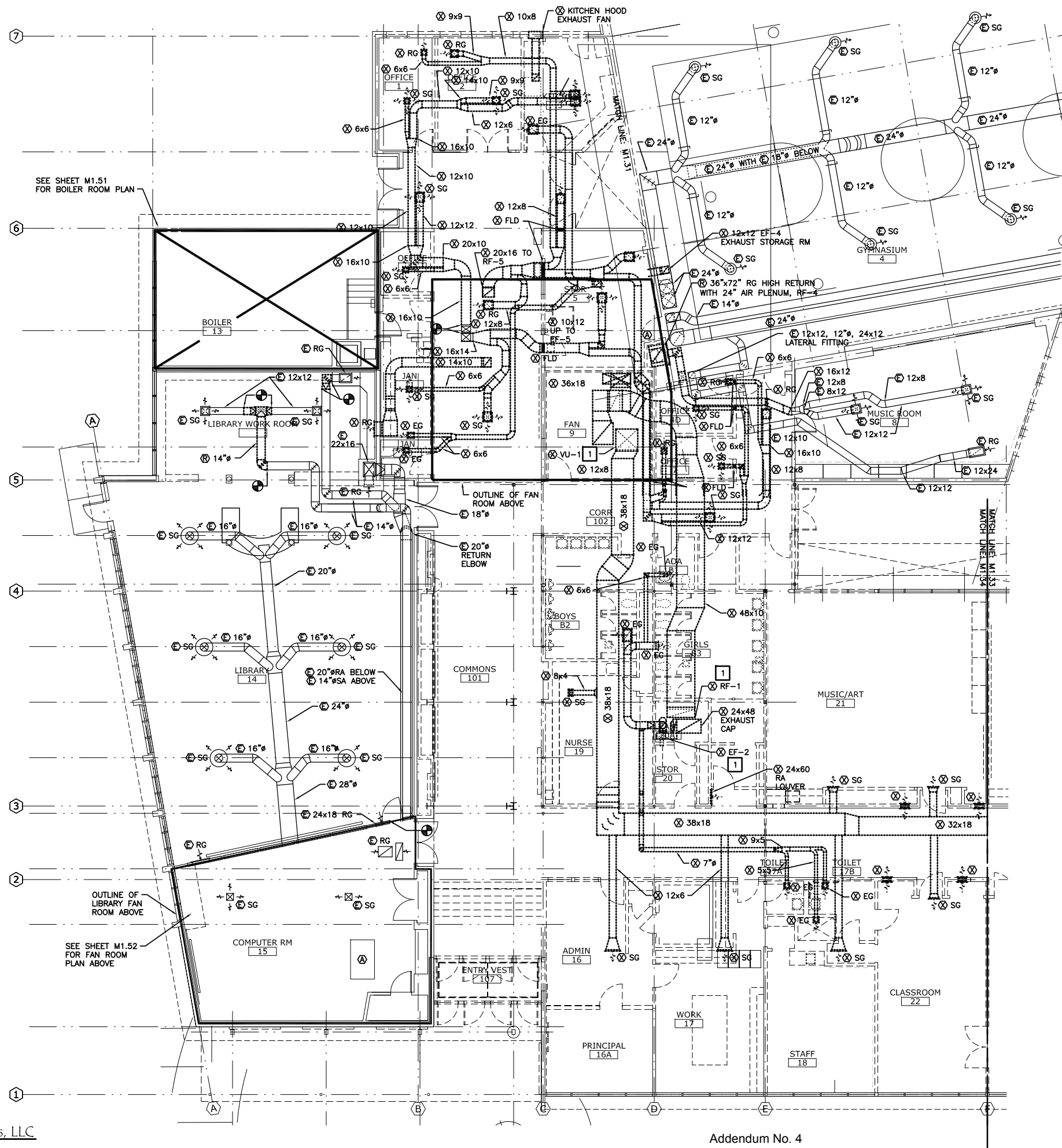
MURRAY & ASSOCIATES, P. C.
CONSULTING ENGINEERS
P.O. BOX 21081 TEL: 907 780-6151
JUNEAU, ALASKA 99802 FAX: 907 780-6182

**GASTINEAU ELEMENTARY SCHOOL
RENOVATION**
CBJ Contract No. E11-137
JUNEAU, ALASKA

SHEET TITLE:
DEMOLITION PLAN HEATING PIPING AREA A&B

DATE: NOV 15, 2010
REVISION:
CHECKED BY: DM
DRAWN: KB, LH

SHEET #
M1.21



KEY PLAN

SHEET NOTES:

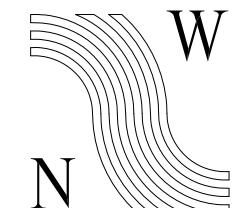
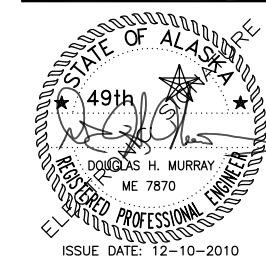
1. REMOVE ENTIRE VENTILATION SYSTEM UNLESS NOTED OTHERWISE.

CONSTRUCTION NOTES:

- 1 REMOVE FAN UNIT, AND RELATED CONNECTING DUCTWORK, SUPPORTS, ELECTRICAL AND CONTROLS.

1 DEMOLITION PLAN DUCTWORK AREA A&B ADDENDUM

SCALE: 0 4' 8' 16'



**NorthWind
Architects LLC**

119A 2ND ST.
JUNEAU, AK 99801
PH #907.586.6150
FX #907.586.6181
WWW.NORTHWINDARCH.COM

MURRAY & ASSOCIATES, P. C.
CONSULTING ENGINEERS

P.O. BOX 21081 TEL: 907 780-6151
JUNEAU, ALASKA 99802 FAX: 907 780-6182

GASTINEAU ELEMENTARY SCHOOL RENOVATION

CBJ Contract No. E11-137
JUNEAU, ALASKA

SHEET TITLE:
DEMOLITION PLAN
DUCTWORK
AREA A&B

DATE: NOV 15, 2010

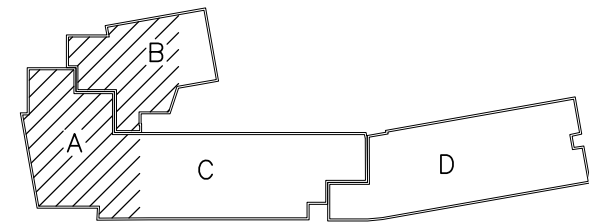
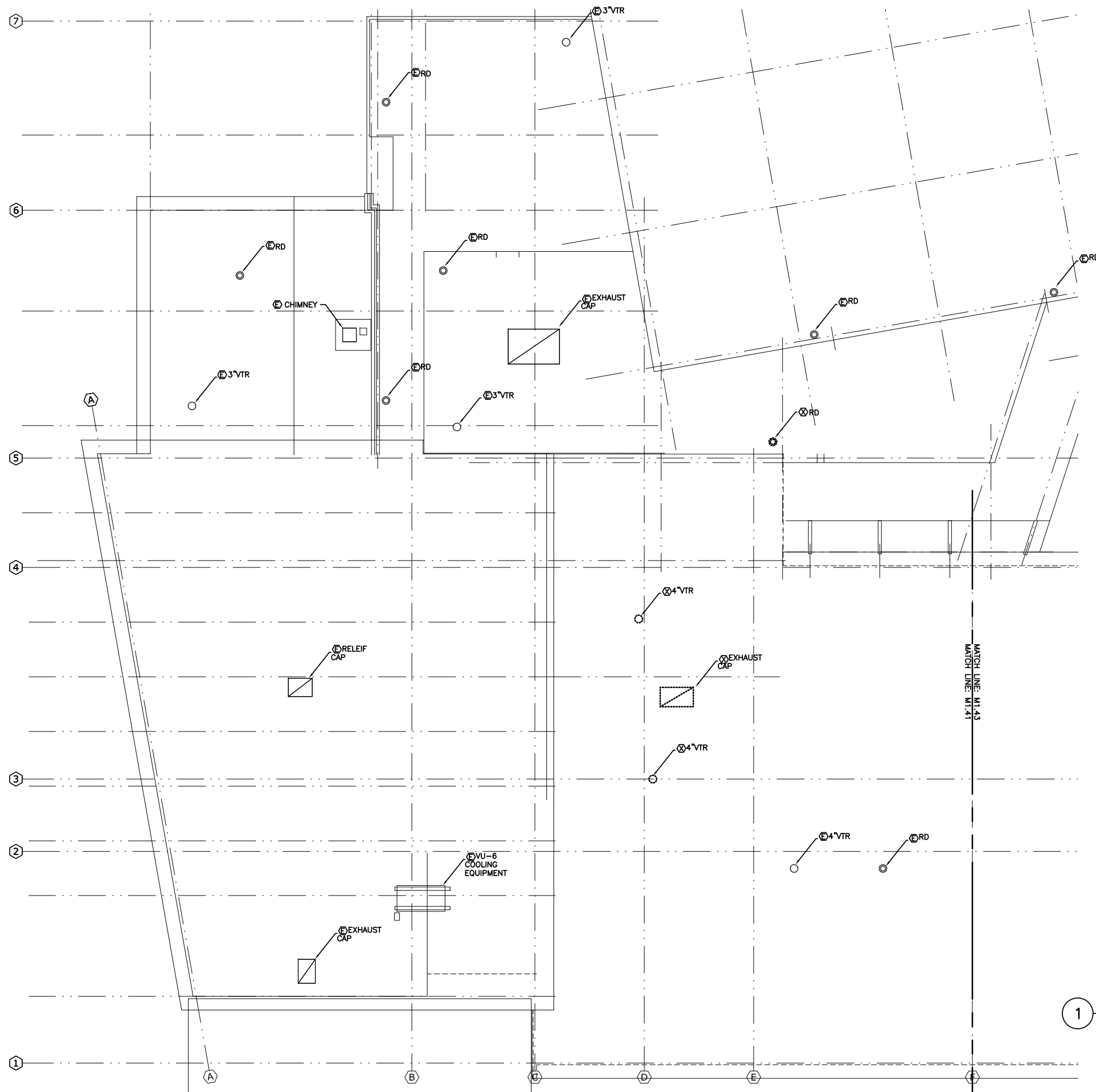
REVISION:

CHECKED BY: DM

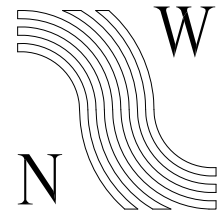
DRAWN: KB, LH

SHEET #

M1.31



KEY PLAN



NorthWind
Architects LLC

119A 2ND ST.
JUNEAU, AK 99801
PH #907.586.6150
FX #907.586.6181
WWW.NORTHWINDARCH.COM

MURRAY & ASSOCIATES, P. C.
CONSULTING ENGINEERS

P. O. BOX 21081 TEL: 907 780-6151
JUNEAU, ALASKA 99802 FAX: 907 780-6182

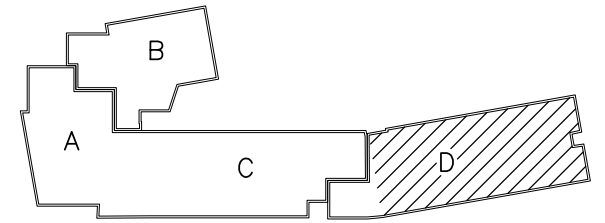
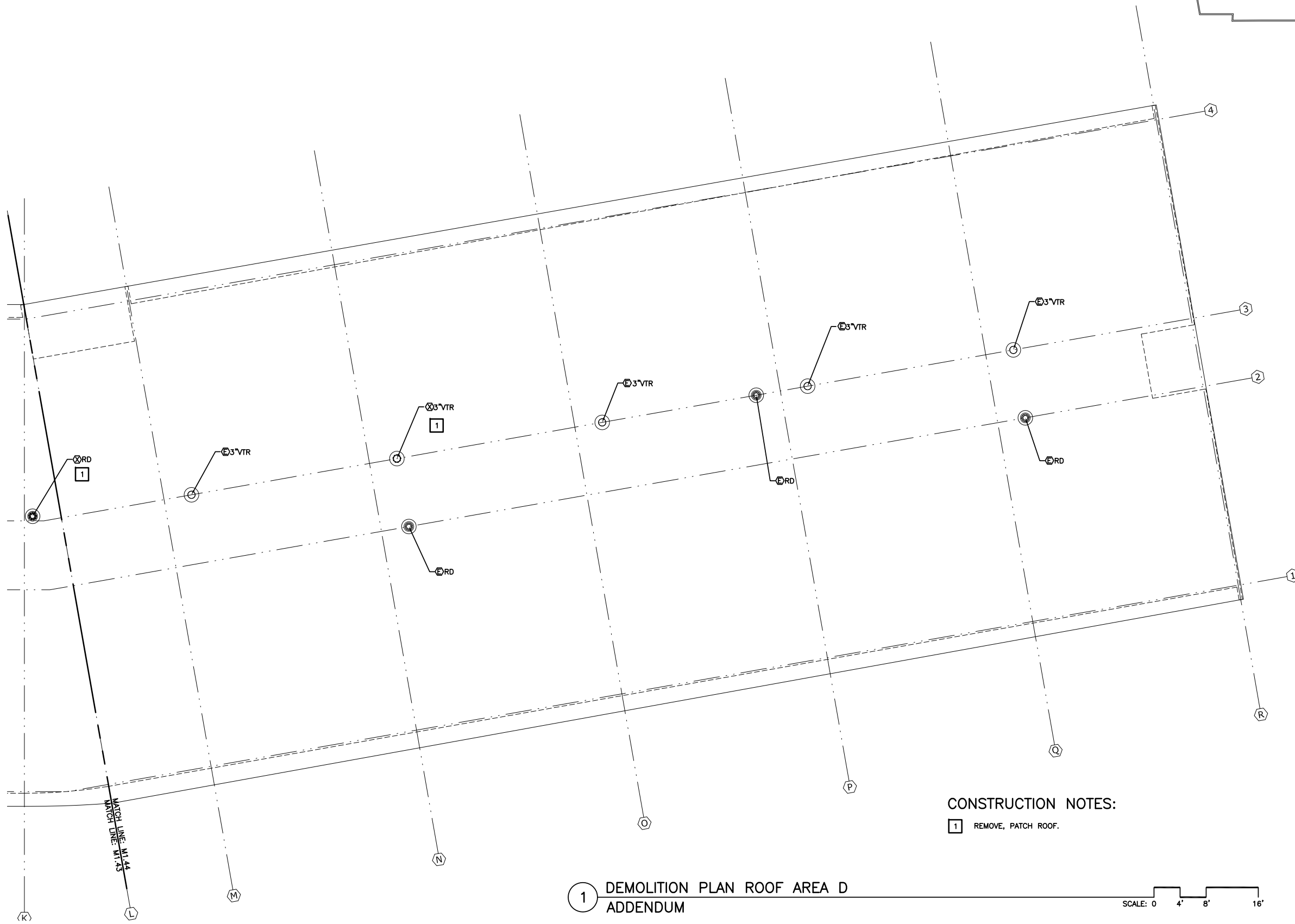
GASTINEAU ELEMENTARY SCHOOL
RENOVATION
CBJ Contract No. E11-137
JUNEAU, ALASKA

SHEET TITLE:
DEMOLITION PLAN
ROOF
AREA A&B

DATE: NOV 15, 2010
REVISION:
CHECKED BY: DM
DRAWN: KB, LH

SHEET #
M1.41





KEY PLAN



119A 2ND ST.
JUNEAU, AK 99801
PH #907.586.6150
FX #907.586.6181
WWW.NORTHWINDARCH.COM

MURRAY & ASSOCIATES, P. C.
CONSULTING ENGINEERS
P. O. BOX 21081 TEL: 907 780-6151
JUNEAU, ALASKA 99802 FAX: 907 780-6182

GASTINEAU ELEMENTARY SCHOOL
RENOVATION
CBJ Contract No. E11-137
JUNEAU, ALASKA

SHEET TITLE:
DEMOLITION PLAN
ROOF
AREA D

DATE: NOV 15, 2010
REVISION:
CHECKED BY: DM
DRAWN: KB, LH

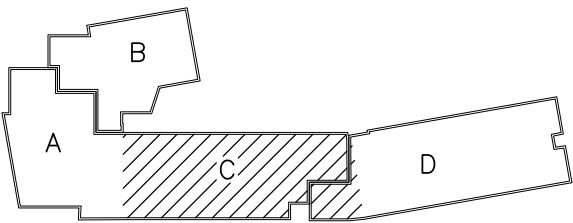
SHEET #
M1.44

CONSTRUCTION NOTES:
1 REMOVE, PATCH ROOF.

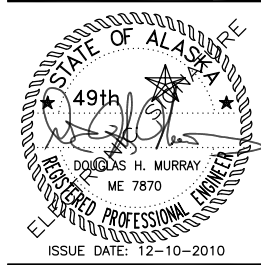
SCALE: 0 4' 8' 16'



1 DEMOLITION PLAN ROOF AREA D
ADDENDUM



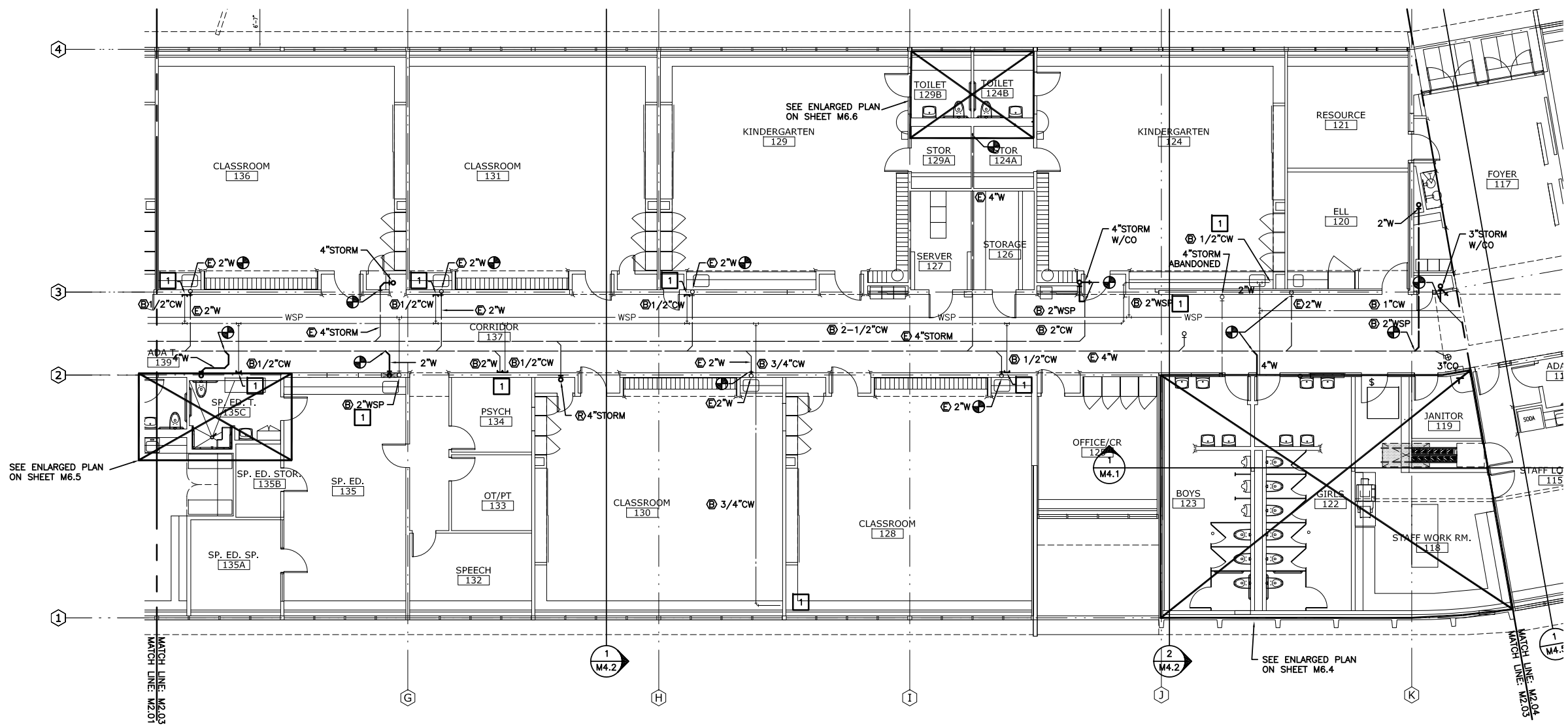
KEY PLAN



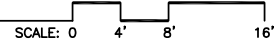
NorthWind Architects LLC
119A 2ND ST.
JUNEAU, AK 99801
PH #907.586.6150
FX #907.586.6181
WWW.NORTHWINDARCH.COM

MURRAY & ASSOCIATES, P. C.
CONSULTING ENGINEERS
P.O. BOX 21081 TEL: 907 780-6151
JUNEAU, ALASKA 99802 FAX: 907 780-6182

**GASTINEAU ELEMENTARY SCHOOL
RENOVATION**
CB/ Contract No. E11-137
JUNEAU, ALASKA



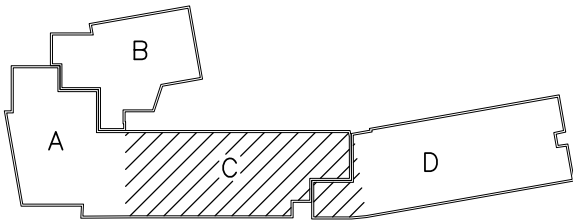
**1 DOMESTIC PIPING UNDERGROUND AREA C
ADDENDUM**



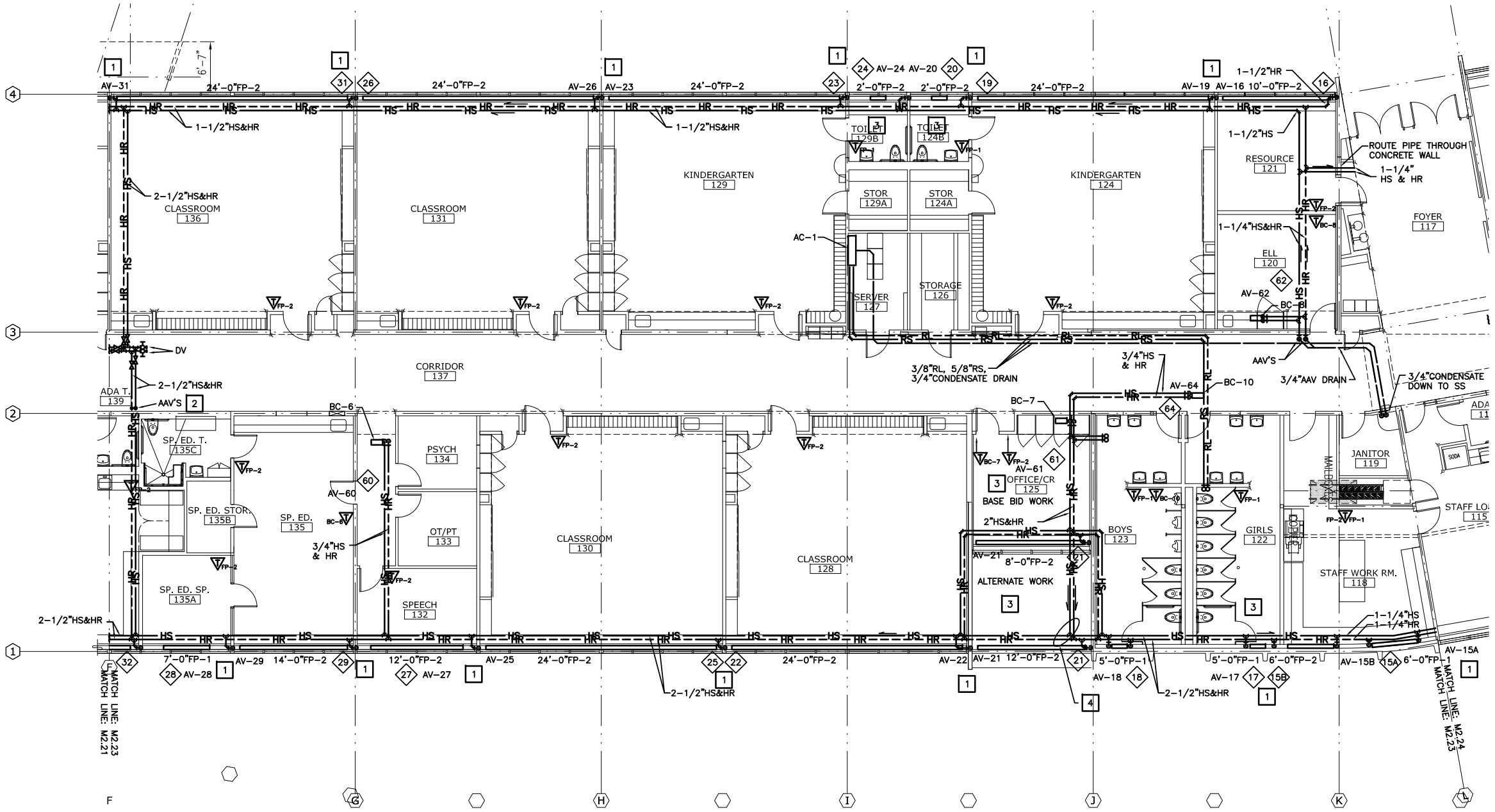
CONSTRUCTION NOTES:
1 CAP PIPING WATERTIGHT.

SHEET TITLE: DOMESTIC PIPING UNDERGROUND AREA C	
DATE:	NOV 15, 2010
REVISION:
CHECKED BY:	DM
DRAWN:	KB, LH

SHEET #
M2.03



KEY PLAN



- CONSTRUCTION NOTES:
- 1 COMMON PIPE. TEE AT BOTTOM OF RISER.
 - 2 AAV'S NORMALLY CLOSED. USE FOR INITIAL PURGE. NO DRAIN PIPING REQUIRED.
 - 3 PROVIDE WALL TO WALL FINNED PIPE CABINET AT THIS LOCATION. PROVIDE ACCESS DOORS AT AUTOMATIC VALVES AND FLOWSETTERS.
 - 4 ALTERNATE WORK.

1 HEATING PIPING AREA C
ADDENDUM

SCALE: 0 4' 8' 16'



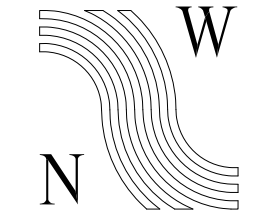
NorthWind Architects LLC
119A 2ND ST.
JUNEAU, AK 99801
PH #907.586.6150
FX #907.586.6181
WWW.NORTHWINDARCH.COM

MURRAY & ASSOCIATES, P. C.
CONSULTING ENGINEERS
P.O. BOX 21081 TEL: 907 780-6151
JUNEAU, ALASKA 99802 FAX: 907 780-6182

**GASTINEAU ELEMENTARY SCHOOL
RENOVATION**
CBJ Contract No. E11-137
JUNEAU, ALASKA

SHEET TITLE:	
HEATING PIPING AREA C	
DATE:	NOV 15, 2010
REVISION:
CHECKED BY:	DM
DRAWN:	KB, LH

SHEET #
M2.23



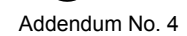
119A 2ND ST.
JUNEAU, AK 99801
PH #907.586.6150
Fx #907.586.6181
WWW.NORTHWINDARCH.COM

P O BOX 21081 TEL: 907 780-6151
JUNEAU, ALASKA 99802 FAX: 907 780-6182

CBJ Contract No. E11-137
JUNEAU, ALASKA

SHEET #

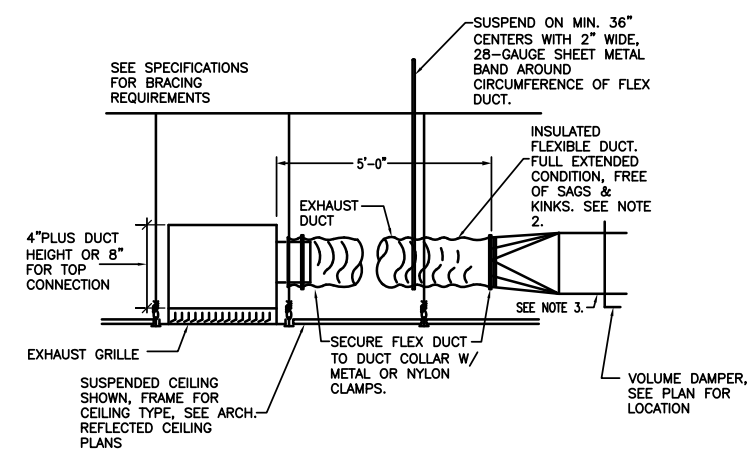
M3.1



1 SOUND ATTENUATE DUCT.

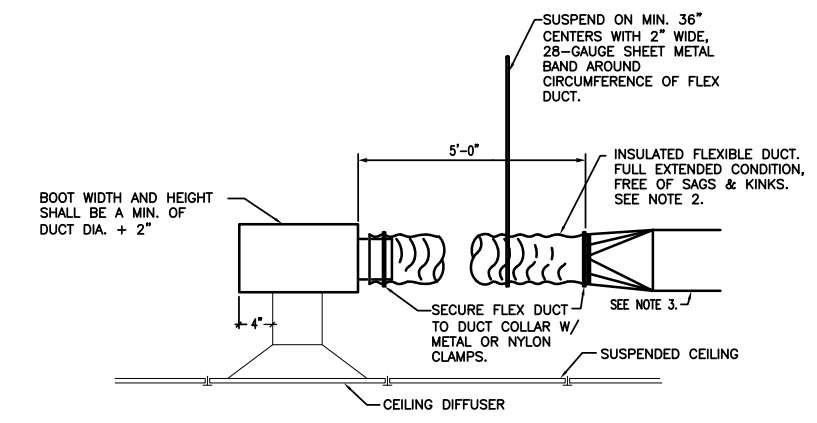
SCALE: 0 4' 8' 16'





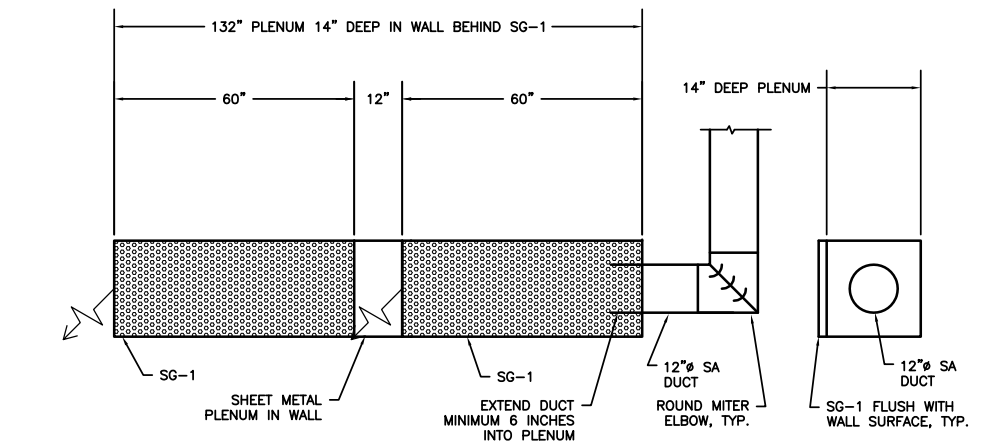
- NOTE:
1. NO FLEXIBLE DUCT TO BE INSTALLED ABOVE INACCESSIBLE CEILINGS.
 2. SIZE OF FLEXIBLE DUCT AREA SAME AS METAL DUCT.
 3. METAL DUCT SAME AREA SIZE AS NECK SIZE OF DIFFUSER SCHEDULED ON SHEET M0.3.

1 EXHAUST GRILLE DETAIL
NO SCALE

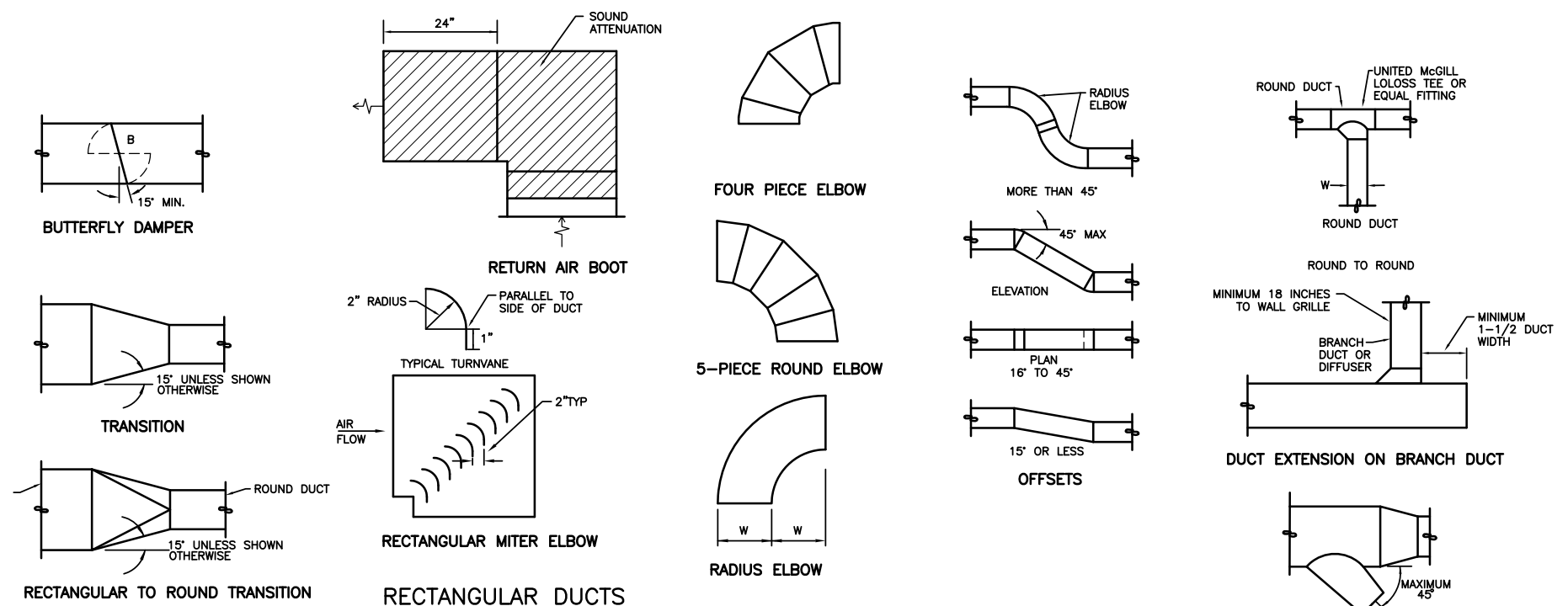


- NOTE:
1. NO FLEXIBLE DUCT TO BE INSTALLED ABOVE INACCESSIBLE CEILINGS.
 2. SIZE OF FLEXIBLE DUCT AREA SAME AS METAL DUCT.
 3. METAL DUCT SAME AREA SIZE AS NECK SIZE OF DIFFUSER SCHEDULED ON SHEET M0.3.

2 CEILING DIFFUSER DETAIL
NO SCALE



3 DISPLACEMENT DIFFUSER DETAIL
NO SCALE



4 DUCT CONSTRUCTION DETAILS
NO SCALE

ADDENDUM