



ENGINEERING DEPARTMENT

ADDENDUM TO THE CONTRACT

for the

Gastineau Elementary School Renovation

Contract No. E11-137

ADDENDUM NO.: TWO

CURRENT DEADLINE FOR BIDS:
December 21, 2010

PREVIOUS ADDENDA: ONE

ISSUED BY: City and Borough of Juneau
ENGINEERING DEPARTMENT
155 South Seward Street
Juneau, Alaska 99801

DATE ADDENDUM ISSUED: December 13, 2010

The following items of the contract are modified as herein indicated. All other items remain the same. This is a faxed addendum. A confirming copy will not be mailed to you. If this fax is incomplete, please call (907) 586-0490, and we will re-send it. This addendum has been issued and is posted online. Please refer to the CBJ Engineering Contracts Division webpage at:

<http://www.juneau.org/engineering ftp/contracts/Contracts.php>

PROJECT MANUAL – VOLUME I:

- Item No. 1 Section 06410, 1.1, B: **Delete** "Countertops" and **add** "Countertops and Window Sills"
- Item No. 2 Section 06410, 1.1: **Add** paragraph F. "F. Plastic Laminate Faced Shelves".
- Item No. 3 Section 06410, 2.6, Title: **Delete** "COUNTERTOPS" and **add**: "COUNTERTOPS AND WINDOW SILLS".
- Item No. 4 Section 06410, 2.6, A, 8: **Delete**: "...use marine edge at sinks."
- Item No. 5 Section 06410, 2.10: **Add**: "1. Unless otherwise specifically noted, all shelving in this project shall be plywood with plastic laminate faces. Shelving concealed in cabinets shall have plastic laminate edges. Shelving exposed to view shall have a clear finished hardwood edge at the exposed faces, plastic laminate at all others. Minimum plywood thickness shall be 3/4". Thicker plywood shall be provided in longer and deeper spans, where indicated or as required by AWI/AWMAC/WI. See section 06200 for shelf bracket assemblies."
- Item No. 6 Section 07260, 2.1, A, 1. **Add** note: "Air barrier is to be installed in all locations where insulation occurs inboard of face of sheathing applied to a framed wall assembly, and shall be installed lapped to drain out of wall assembly." In most cases in the drawings the air barrier has been omitted for clarity, but is to be provided to ensure a weatherproof envelope.
- Item No. 7 Section 07260, 2.1, C, 1. **Add** note: "Interior-applied vapor retarder is to be provided at all framed wall assemblies with insulation inboard of sheathing."

- Item No. 8 Section 07260, 2.1, D, 1. **Add** note: "Vapor retarder applied to outside of building sheathing and under rigid insulation is in all cases to be installed lapped to drain and shall be configured to ensure waterproof drainage to outside of wall and roof assemblies."

PROJECT MANUAL – VOLUME II:


- Item No. 9 Section 09300, 2.1, D, 6, a. **Add**: "Tile installation includes all four faces of free standing columns and three faces of the half column."

DRAWINGS - VOLUME III

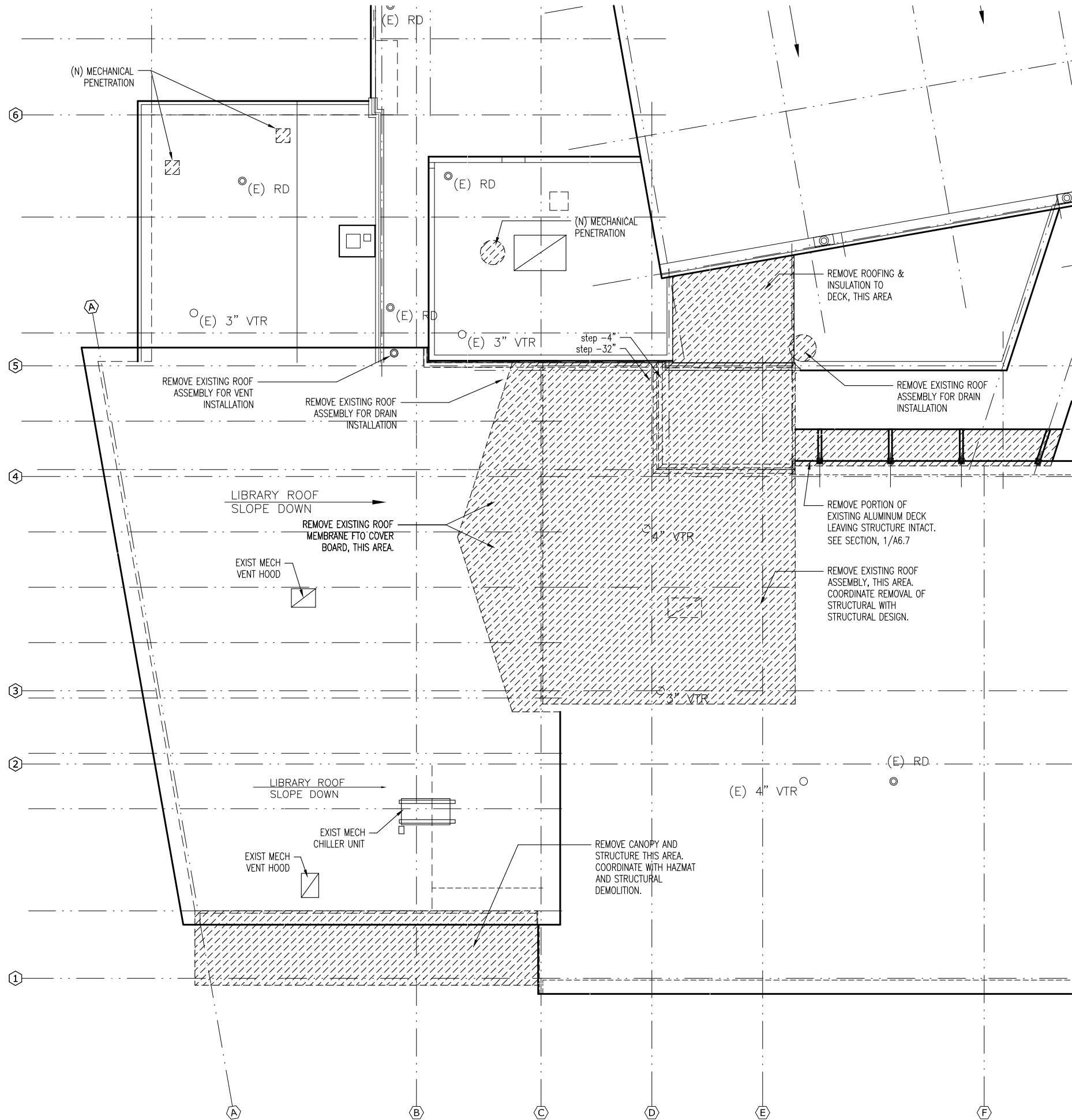
- Item No. 10 1/G0.6A: Construction Fence line: At the plan south edge of the fenced area there is a fence through the woods behind the school. This fence has a gap approximately 50 feet long, as shown on Sheet G0.6B. Sheet G0.6A incorrectly shows this as existing fencing. Provide construction fencing at this gap.
- Item No. 11 1/G0.6B: Construction Fence Line: At the plan south edge of the fenced area there is a gap in the existing fence of approximately 50 feet. Close this gap with construction fencing.
- Item No. 12 1/G0.6B: Notes regarding relocating trees: At the plan north edge of the site, in the vicinity of the drive loop there are five reference notes to trees to be removed, preserved or relocated. Delete these reference notes. Contractor shall refer to Landscape and Civil drawings for scope of tree preservation, relocation and removal.
- Item No. 13 1/A1.0: Key Note 16 to be added to plan in 4 locations: At the front entry canopy to be removed, between grids A and C, and 1 and 1.2. At the high soffit above door 107 between grids B and C, and grids 1.2 and 1.3. At the soffit above windows to be removed on gridline 4, between grids E and F. At the high sloping roof eave (above demolition for commons) on grid lines, between grids 3 and 5.
- Item No. 14 1/A1.0: The Drawings show the outline of the new canopy soffit at the front door (door 107) as well as the existing canopy soffit to be removed. Please note that the existing soffit to be removed is the smaller area, between grids 1 and 1.1, and grids A and C. Disregard outline of new canopy.
- Item No. 15 1/A1.0: Increase concrete floor slab demolition area in the vicinity of noted rooms 4D and 7 (plan Northeast corner of the gym) by 64 square feet to coincide with footprint of new kitchen.
- Item No. 16 A1.2: Add key note #16 at exterior soffit on grid 1.5, between grids I.5 and J.
- Item No. 17 A1.3: Add key note #16 at the exterior soffit on grid 4, between grids E and E.5.
- Item No. 18 A1.4: Delete Sheet A1.4 and replace with attached sheet A1.4. The changes eliminate new construction notes inadvertently placed on this demolition plan, and show demolition for mechanical where mechanical does not require demolition.
- Item No. 19 A2.0: Delete Sheet A2.0 and replace with attached sheet A2.0. Modifications relate to Key notes 7 and 8. Line-work clarity is improved for half-size drawings.
- Item No. 20 A2.1: Delete Sheet A2.1 and replace with attached sheet A2.1. Modifications relate to Key notes 7 and 8. Line-work clarity is improved for half-size drawings.
- Item No. 21 A2.2: Delete Sheet A2.2 and replace with attached sheet A2.2. Modifications relate to Key notes 7 and 8. Line-work clarity is improved for half-size drawings.
- Item No. 22 A2.3: Delete Sheet A2.3 and replace with attached sheet A2.3. Modifications relate to Key notes 7 and 8. Line-work clarity is improved for half-size drawings.
- Item No. 23 A2.4: Delete Sheet A2.4 and replace with attached sheet A2.4. Modifications relate detail flag reference changes in two locations. Line-work clarity is improved for half-size drawings.

- Item No. 24 A2.7: Delete Sheet A2.7 and replace with attached sheet A2.7. Modifications relate detail flag reference changes in one location, and inclusion of dimension string at 2/A2.7.
- Item No. 25 A2.8: At enlarged floor plan 2/A2.8, the detail reference at the left jamb of the storefront between gym and gym entry is 8/A11.8. This detail reference should be changed to 7/A11.7, sim.
- Item No. 26 A2.9: 1/A2.9: Detail flags have not been filled in and are updated as follows: The guardrail and support at the ramp, free standing, is detail 2/A10.9; the free-standing handrail at the stair is similar. The detail for handrail attachment to concrete, both ramp and stair, is 1/A10.9. The details are correctly flagged on the sections cut through this area on sheet A6.0. Delete detail 2/A2.9 (this is repeated at 1/A10.9).
- Item No. 27 A3.1: 1/A3.1: Delete reference to EF-2, between grids 1 and 2. 2/A3.1: Delete reference to new duct hood penetration at penthouse roof, between grids 1 and 2, and J and K.
- Item No. 28 A4.1: 2/A4.1: Coordinate placement and quantity of wall mounted light fixtures with electrical drawings.
- Item No. 29 A5.2: 1/A5.2: delete call out reference to 3/A6.2 at grid 2.
- Item No. 30 A8.1: 2/A8.1: The cabinets in this elevation shall be 7'-6" tall, with gypsum wall board soffit above.
- Item No. 31 A8.1: 3/A8.1: Delete the soffit above bed nook in this room. See 3B. Extend cabinets to ceiling as shown in 3B/A8.1.
- Item No. 32 A8.1: 3C/A8.1: Delete provision for power and data at casework against the window wall. Bookcase to be continuous between simple supports.
- Item No. 33 A8.4: 2/A8.4: Add detail tag to jambs of door to left of hall door, to read: 3/A11.3, typ.
- Item No. 34 A8.5: 1C/A8.5: Add detail tag to jambs of door to left of hall door, to read: 3/A11.3, typ.
- Item No. 35 A8.5: 2/A8.5: typical corner guard details shall be 1/A11.7, not 2/A11.1 as indicated.
- Item No. 36 A8.6: 1A, B & D/A8.6: Typical corner guard details shall be 1/A11.7, not 2/A11.1 as indicated.
- Item No. 37 A8.7: 1/A8.7: Change door 157 to "Rally 157" to be door type 4 as scheduled.
- Item No. 38 A9.0: Add key note #2 at the exterior soffit on grid 4, between grids E and E.5.
- Item No. 39 A9.2: Change elevation of ceiling soffit at Office/CR 125 from 8' - 6" to 7' - 6"
- Item No. 40 A9.3: Add key note #2 at the exterior soffit between gridlines 2 and 3, and Q and R.
- Item No. 41 7/A10.1: Detail has a dimension of 1'-4" from face of stud to back side of fascia blocking. This dimension shall be changed to 1'-1" so overall assembly dimensions match those in sections.
- Item No. 42 /A10.2: Delete detail 7/A10.2 and replace with detail 7/A10.2 provided as ASK-1.
- Item No. 43 7/A10.6: Delete detail 7/A10.6 and replace with detail 7/A10.6 provided as ASK-2.
- Item No. 44 10.7: Delete detail 6/A10.7.
- Item No. 45 See attached Sketch ASK-3. This detail will be detail 3/ A11.3 on the conformed drawing set, and illustrates the cabinet type door installation at gypsum wall board wrapped closet openings in typical classrooms.

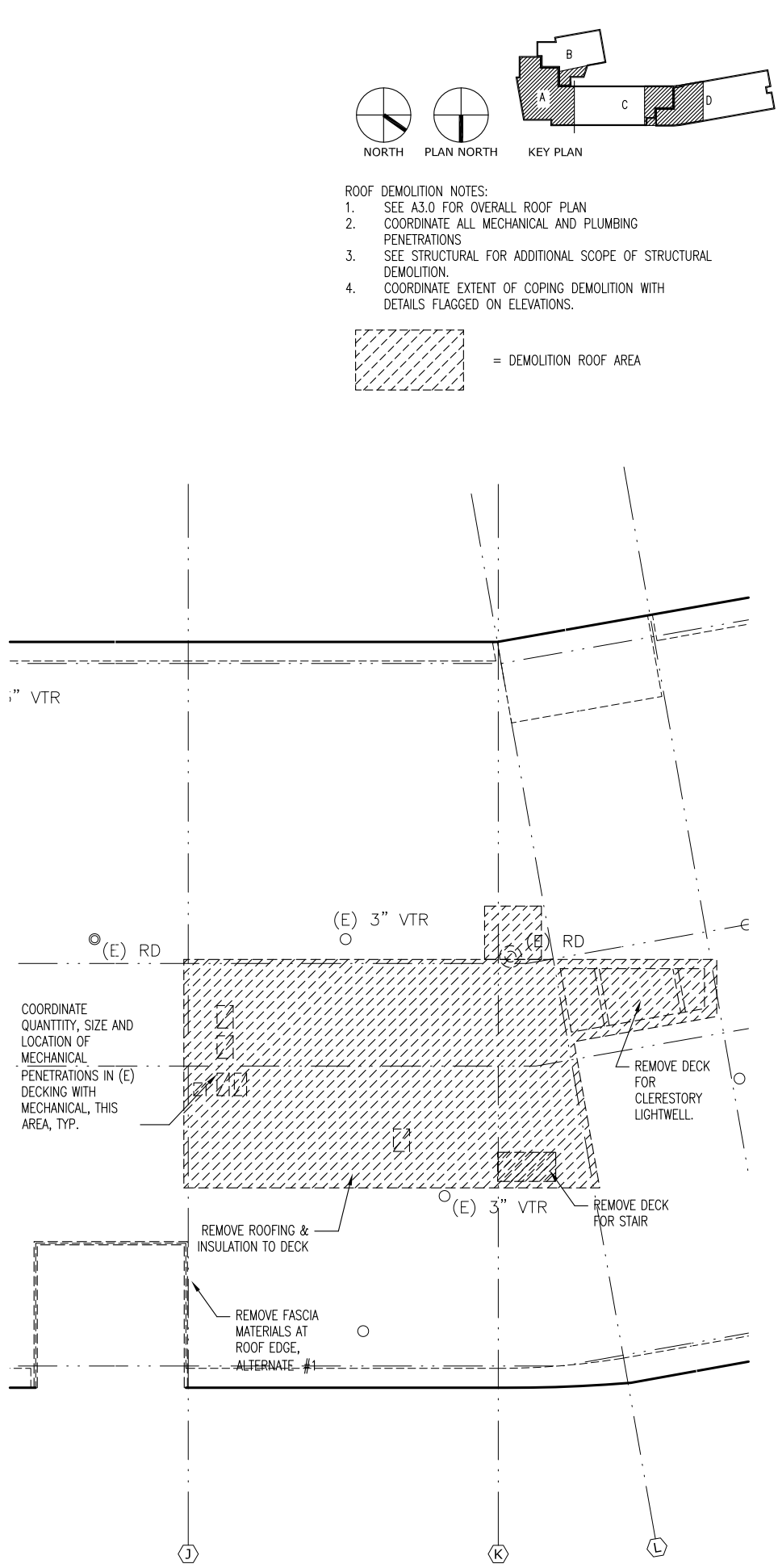
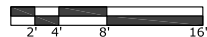
- Item No. 46 A12.1: Existing Room 13 Boiler room. Existing walls are concrete, unpainted, rather than GWM noted in the schedule. These walls are to be cleaned and prepped prior to painting.
- Item No. 47 A12.2: Signage text at room 139 to read "139".
- Item No. 48 A12.4: Existing doors 026, 028, 031A, are to be removed and not reused elsewhere in the project. Hardware is to be salvaged for reuse at indicated door numbers listed in the comments column.
- Item No. 49 A12.5: Existing doors 039, 040, 040A, 041, 042, are to be removed and not reused elsewhere in the project. Hardware is to be salvaged for reuse at indicated door numbers in the listed in the comments column.

By: 
Jennifer Mannix,
Contract Administrator
Date: 12/13/10

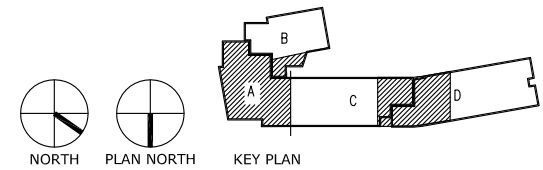
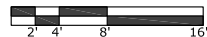
Total number of pages contained within this Addendum: 4 plus 7 drawings and 2 sketch sheets.



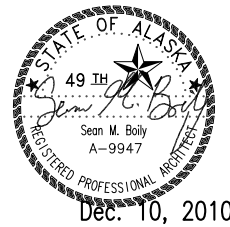
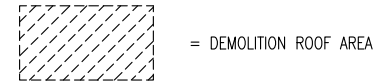
① ENLARGED ROOF DEMO
1/8" = 1'-0"



② ENLARGED ROOF DEMO
1/8" = 1'-0"



- ROOF DEMOLITION NOTES:
1. SEE A3.0 FOR OVERALL ROOF PLAN
 2. COORDINATE ALL MECHANICAL AND PLUMBING PENETRATIONS
 3. SEE STRUCTURAL FOR ADDITIONAL SCOPE OF STRUCTURAL DEMOLITION.
 4. COORDINATE EXTENT OF COPING DEMOLITION WITH DETAILS FLAGGED ON ELEVATIONS.



NorthWind Architects LLC
119A 2ND ST.
JUNEAU, AK 99801
PH #907.586.6150
Fx #907.586.6181
WWW.NORTHWINDARCH.COM

IF THE ABOVE DIMENSION DOES NOT EQUAL EXACTLY 1", THIS DRAWING HAS BEEN ENLARGED OR REDUCED, AFFECTING ALL LABELLED SCALES

GASTINEAU ELEMENTARY SCHOOL RENOVATION

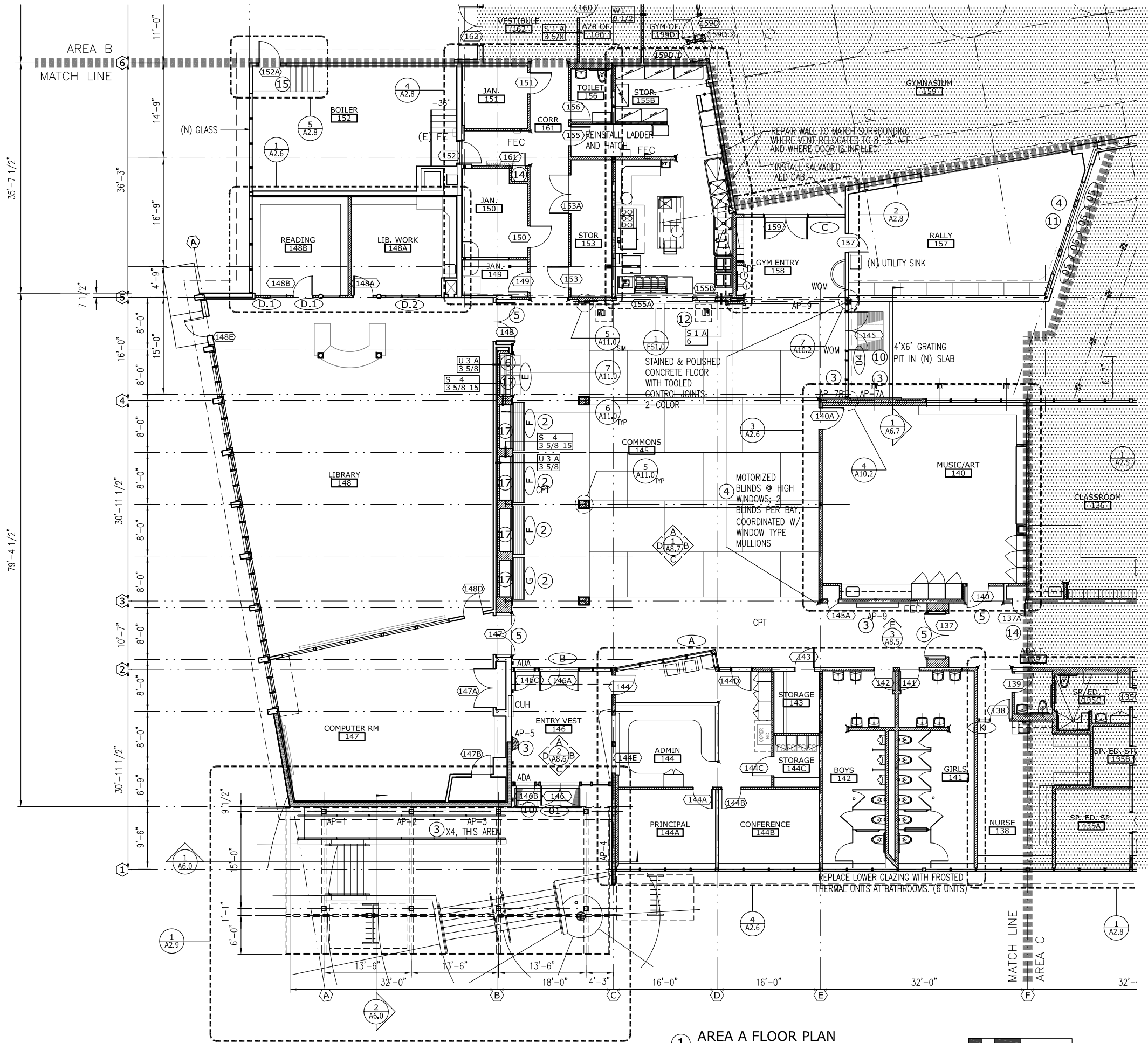
CBJ Contract No. E11-137
JUNEAU, ALASKA

SHEET TITLE:
ROOF DEMO PLAN ENLARGED

DATE: NOV. 15, 2010
REVISION: DEC. 10, 2010
CHECKED BY: SB
DRAWN: FD, GG, EK, SB

SHEET #
A1.4

Addendum No. 2



1 AREA A FLOOR PLAN
1/8" = 1'-0"



FLOOR PLAN GENERAL NOTES:

- WHERE WALLS AND DEVICES ARE REMOVED IN DEMOLITION, EXTEND NEW SCHEDULED FINISH ACROSS BREACH IN TYPICAL ASSEMBLY.
- SEE ENLARGED FLOOR PLANS FOR WALL TYPE AND DETAIL TAGS NOT SHOWN AT THIS SCALE.
- WHERE NEW DEVICES ARE TO BE INSTALLED AT EXISTING ASSEMBLIES, CUT AND PATCH WALL ASSEMBLY AS REQUIRED FOR INSTALLATION.

FLOOR PLAN LEGEND:

- (N) WALL, TYP. COORDINATE W/ WALL TYPE SCHEDULE. WALL TYPE W1A/3-1/2 TYP. UNLESS PART OF EXISTING WALL SYSTEM, OR UON. ASSEMBLY DEPTH TO MATCH ADJACENT EXISTING, UON.
- (E) WALL TO REMAIN, TYP. REPAIR AS REQUIRED FOR SPECIFICS OR NOTED FINISH. COORDINATE (N) MATERIAL APPLIED WITH STRUCTURAL DRAWINGS AND WITH FINISH SCHEDULE. COORDINATE INSTALLATION OF NEW FRAMING AND FINISHES IN ASSOCIATION WITH ADJACENT DEMOLITION. DOT-HATCH = CONCRETE.

NOTE: CORNER GUARDS ARE FULL HEIGHT OF WALL, TYPICAL.
TYPE 1 = WOOD PER, PER DETAIL 1/A11.7 @ CORRIDORS AND COMMONS
TYPE 2 = 2.25X2.25 18 GA STAINLESS STEEL TO 60" AFF, PER DETAIL, ALL OTHER U.O.N.

TYP. NEW CONSTRUCTION KEY NOTES:

- INSTALL NEW CASEWORK AND ACCESSORIES. COORDINATE WITH ELECTRICAL, HEATING AND VENTILATION WHERE APPLICABLE. PROVIDE ACCESS DOORS THROUGH CASEWORK BACKS AND SIDES WHERE VALVES AND CONTROLS MUST BE ACCESSED. SEE ITEMS CALLED OUT ON ELEVATIONS AND ENLARGED PLANS AND ASSOCIATED KEY NOTES ON SHEET A2.5.
- BUILT IN WOOD BENCH, 2 & 7/A11.1, TYP. LENGTH AS DETAILED ON PLAN.
- INSTALL SALVAGED ART PANEL OR ITEM IDENTIFIED
- INSTALL NEW ROLLER BLIND AT WINDOW, MOTORIZED WHERE INDICATED.
- GWB WALLS AND SOFFIT PAINTED ACCENT COLOR, @ ALCOVES, TYP.
- SPACE FOR RECYCLING MODULE (NIC)
- PROVIDE (4) 18" DEEP PLASTIC LAMINATE FACED SHELF WITH WOOD EDGE, FULL LENGTH OF WALL, SPACED 18" OC VERTICALLY FROM 24" AFF, HEAVY-DUTY ADJUSTABLE TYPE STEEL BRACKETS ON CONTINUOUS WALL TRACKS ON EACH STUD -24" O.C. TYP.
- PROVIDE (2) 24" AND (2) 18" DEEP PLASTIC LAMINATE FACED SHELF WITH WOOD EDGE FULL LENGTH OF WALL, SPACED 18" OC VERTICALLY FROM 24" AFF. HEAVY-DUTY ADJUSTABLE TYPE STEEL BRACKETS ON CONTINUOUS WALL TRACKS ON EACH STUD -24" O.C. TYP.
- INSTALL SALVAGED WINDOW BLINDS.
- INSTALL NEW GRATING AT PIT
- INSTALL NEW EXTERIOR WINDOWS, SILL AND GWB RETURNS. PAINT TO MATCH EXISTING CONDITIONS, U.O.N.
- (N) SS COUNTERTOP AT OVERHEAD COILING COUNTER DOOR - 8/A11.1
- BID ALTERNATE #5: INSTALL NEW GYM FLOOR, NEW PAINT AT WALLS & CEILINGS, AND NEW LIGHTING. REINSTALL SALVAGED ART PANELS AT WALLS (12 PANELS).
- SWITCH CLOSET - COORDINATE W/ ELECTRICAL.
- INSTALL NEW PRE-ENGINEERED STEEL STAIR, LANDING, AND HANDRAIL.
- NICHE FOR TRASH RECEPTACLE
- DISPLAY CASE - SEE DETAILS AT 5 AND 6/A11.0
- NEW SOLID SURFACES WINDOW SILL
- NEW PAINTED WOOD WINDOW SILL
- (E) CUH - PREP AN PAINT TO MATCH WALL COLOR.



NorthWind Architects LLC
119A 2ND ST.
JUNEAU, AK 99801
PH #907.586.6150
FX #907.586.6181
WWW.NORTHWINDARCH.COM

IF THE ABOVE DIMENSION DOES NOT EQUAL EXACTLY 1", THIS DRAWING HAS BEEN ENLARGED OR REDUCED, AFFECTING ALL LABELLED SCALES

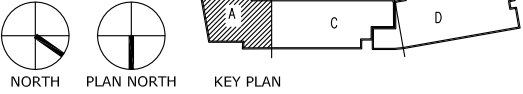
**GASTINEAU ELEMENTARY SCHOOL
RENOVATION**
CBJ Contract No. E11-157
JUNEAU, ALASKA

SHEET TITLE:
**AREA A
FLOOR PLAN**

DATE: NOV. 15, 2010
REVISION: DEC. 10, 2010
CHECKED BY: SB
DRAWN: FD, GG, EK, SB

SHEET #
A2.0

Addendum No. 2



FLOOR PLAN GENERAL NOTES:

- WHERE WALLS AND DEVICES ARE REMOVED IN DEMOLITION, EXTEND NEW SCHEDULED FINISH ACROSS BREACH IN TYPICAL ASSEMBLY.
- SEE ENLARGED FLOOR PLANS FOR WALL TYPE AND DETAIL TAGS NOT SHOWN AT THIS SCALE.
- WHERE NEW DEVICES ARE TO BE INSTALLED AT EXISTING ASSEMBLIES, , CUT AND PATCH WALL ASSEMBLY AS REQUIRED FOR INSTALLATION.

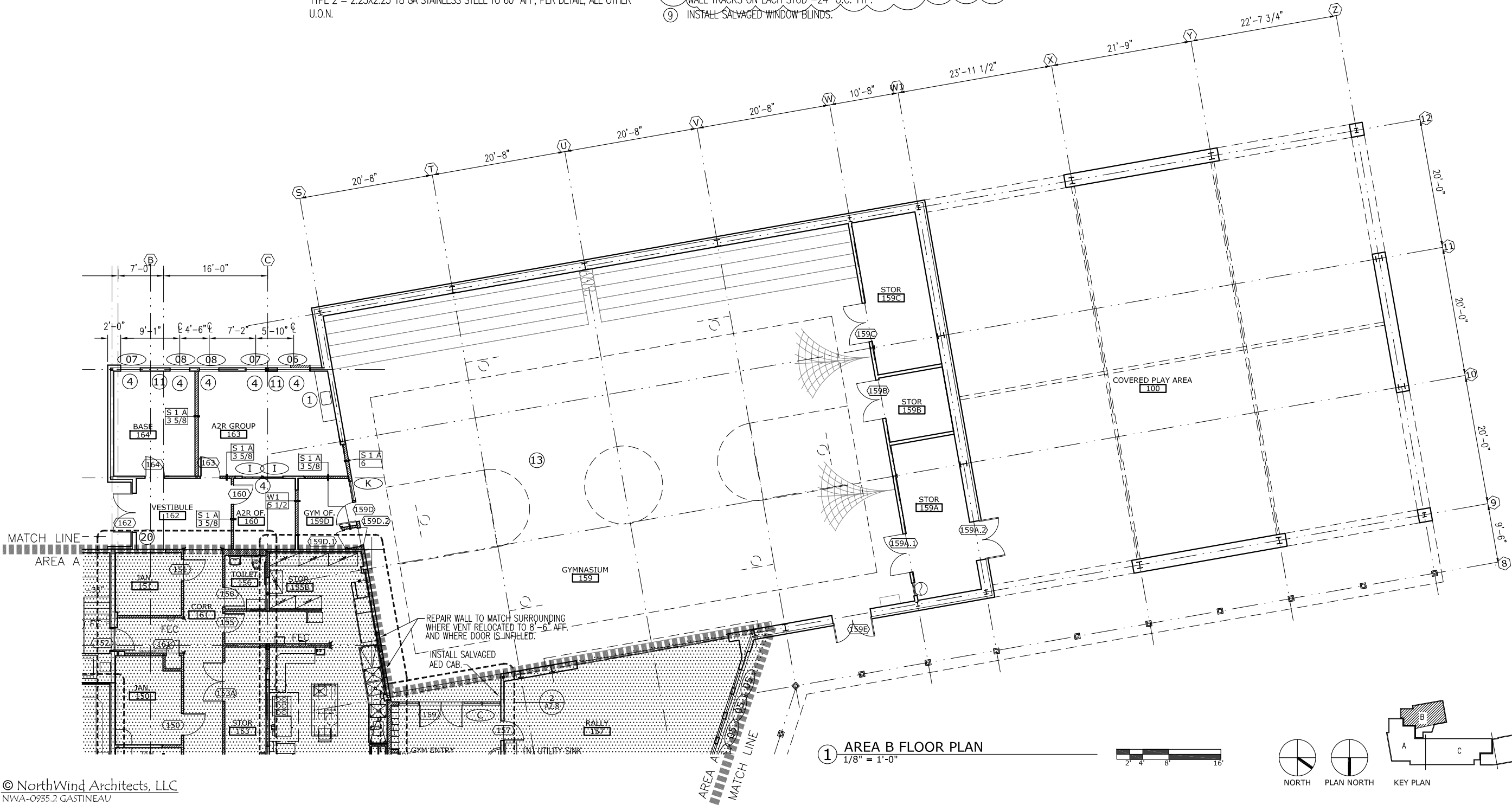
FLOOR PLAN LEGEND:

- (N) WALL, TYP. COORDINATE W/ WALL TYPE SCHEDULE. WALL TYPE W1A/3-1/2 TYP. UNLESS PART OF EXISTING WALL SYSTEM, OR UON. ASSEMBLY DEPTH TO MATCH ADJACENT EXISTING, UON.
- (E) WALL TO REMAIN, TYP. REPAIR AS REQUIRED FOR SPECIES OR NOTED FINISH. COORDINATE (N) MATERIAL APPLIED WITH STRUCTURAL DRAWINGS AND WITH FINISH SCHEDULE. COORDINATE INSTALLATION OF NEW FRAMING AND FINISHES IN ASSOCIATION WITH ADJACENT DEMOLITION. DOT-HATCH = CONCRETE.

NOTE: CORNER GUARDS ARE FULL HEIGHT OF WALL, TYPICAL.
TYPE 1 = WOOD PER, PER DETAIL 1/A11.7 @ CORRIDORS AND COMMONS
TYPE 2 = 2.25X2.25 18 GA STAINLESS STEEL TO 60" AFF, PER DETAIL, ALL OTHER U.O.N.

TYP. NEW CONSTRUCTION KEY NOTES:

- INSTALL NEW CASEWORK AND ACCESSORIES. COORDINATE WITH ELECTRICAL, HEATING AND VENTILATION WHERE APPLICABLE. PROVIDE ACCESS DOORS THROUGH CASEWORK BACKS AND SIDES WHERE VALVES AND CONTROLS MUST BE ACCESSED. SEE ITEMS CALLED OUT ON ELEVATIONS AND ENLARGED PLANS AND ASSOCIATED KEY NOTES ON SHEET A2.5.
- BUILT IN WOOD BENCH, 2 & 7/A11.1, TYP. LENGTH AS DETAILED ON PLAN.
- INSTALL SALVAGED ART PANEL OR ITEM IDENTIFIED
- INSTALL NEW ROLLER BLIND AT WINDOW, MOTORIZED WHERE INDICATED.
- GWB WALLS AND SOFFIT PAINTED ACCENT COLOR, @ ALCOVES, TYP.
- SPACE FOR RECYCLING MODULE (NIC).
- PROVIDE (4) 18" DEEP PLASTIC LAMINATE FACED SHELF WITH WOOD EDGE, FULL LENGTH OF WALL, SPACED 18" OC VERTICALLY FROM 24" AFF, HEAVY-DUTY ADJUSTABLE TYPE STEEL BRACKETS ON CONTINUOUS WALL TRACKS ON EACH STUD -24" O.C. TYP.
- PROVIDE (2) 24" AND (2) 18" DEEP PLASTIC LAMINATE FACED SHELF WITH WOOD EDGE FULL LENGTH OF WALL, SPACED 18" OC VERTICALLY FROM 24" AFF. HEAVY-DUTY ADJUSTABLE TYPE STEEL BRACKETS ON CONTINUOUS WALL TRACKS ON EACH STUD -24" O.C. TYP.
- INSTALL SALVAGED WINDOW BLINDS.
- INSTALL NEW GRATING AT PIT
- INSTALL NEW EXTERIOR WINDOWS, SILL AND GWB RETURNS. PAINT TO MATCH EXISTING CONDITIONS, U.O.N.
- (N) SS COUNTERTOP AT OVERHEAD COILING COUNTER DOOR - 8/A11.1
- BID ALTERNATE #5: INSTALL NEW GYM FLOOR, NEW PAINT AT WALLS & CEILINGS, AND NEW LIGHTING. REINSTALL SALVAGED ART PANELS AT WALLS (12 PANELS).
- SWITCH CLOSET - COORDINATE W/ ELECTRICAL.
- INSTALL NEW PRE-ENGINEERED STEEL STAIR, LANDING, AND HANDRAIL.
- NICHE FOR TRASH RECEPTACLE
- DISPLAY CASE - SEE DETAILS AT 5 AND 6/A11.0
- NEW SOLID SURFACES WINDOW SILL
- NEW PAINTED WOOD WINDOW SILL
- (E) CUH - PREP AN PAINT TO MATCH WALL COLOR.



NorthWind Architects LLC
119A 2ND ST.
JUNEAU, AK 99801
PH #907.586.6150
Fx #907.586.6181
WWW.NORTHWINDARCH.COM

IF THE ABOVE DIMENSION DOES NOT EQUAL EXACTLY 1", THIS DRAWING HAS BEEN ENLARGED OR REDUCED, AFFECTING ALL LABELLED SCALES

GASTINEAU ELEMENTARY SCHOOL RENOVATION
CBJ Contract No. E11-137
JUNEAU, ALASKA

SHEET TITLE:
AREA B FLOOR PLAN

DATE: NOV. 15, 2010
REVISION: DEC. 10, 2010
CHECKED BY: SB
DRAWN: FD, GG, EK, SB

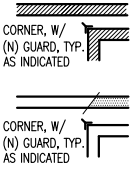
SHEET #
A2.1

Addendum No. 2

FLOOR PLAN GENERAL NOTES:

- WHERE WALLS AND DEVICES ARE REMOVED IN DEMOLITION, EXTEND NEW SCHEDULED FINISH ACROSS BREACH IN TYPICAL ASSEMBLY.
- SEE ENLARGED FLOOR PLANS FOR WALL TYPE AND DETAIL TAGS NOT SHOWN AT THIS SCALE.
- WHERE NEW DEVICES ARE TO BE INSTALLED AT EXISTING ASSEMBLIES, , CUT AND PATCH WALL ASSEMBLY AS REQUIRED FOR INSTALLATION.

FLOOR PLAN LEGEND:

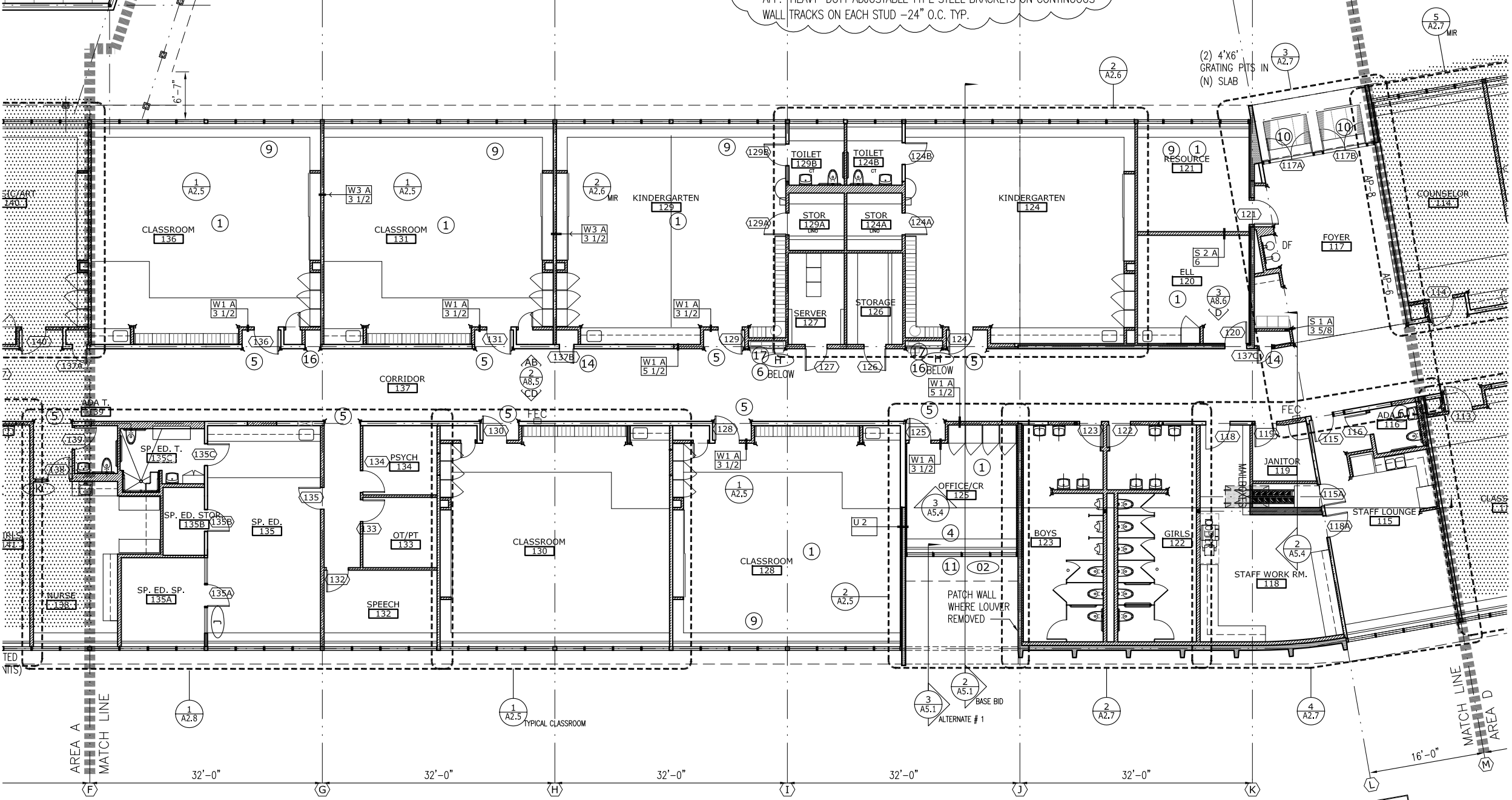


- (N) WALL, TYP. COORDINATE W/ WALL TYPE SCHEDULE. WALL TYPE W1A/3-1/2 TYP. UNLESS PART OF EXISTING WALL SYSTEM, OR UON. ASSEMBLY DEPTH TO MATCH ADJACENT EXISTING, UON.
- (E) WALL TO REMAIN, TYP. REPAIR AS REQUIRED FOR SPECIFICS OR NOTED FINISH. COORDINATE (N) MATERIAL APPLIED WITH STRUCTURAL DRAWINGS AND WITH FINISH SCHEDULE. COORDINATE INSTALLATION OF NEW FRAMING AND FINISHES IN ASSOCIATION WITH ADJACENT DEMOLITION. DOT-HATCH = CONCRETE.

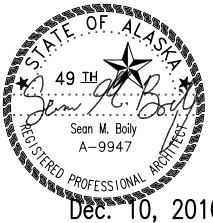
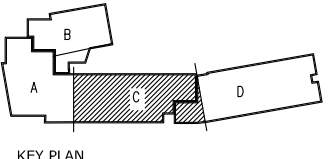
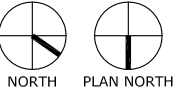
NOTE: CORNER GUARDS ARE FULL HEIGHT OF WALL, TYPICAL.
TYPE 1 = WOOD PER, PER DETAIL 1/A11.7 @ CORRIDORS AND COMMONS
TYPE 2 = 2.25X2.25 18 GA STAINLESS STEEL TO 60" AFF, PER DETAIL, ALL OTHER U.O.N.

TYP. NEW CONSTRUCTION KEY NOTES:

- INSTALL NEW CASEWORK AND ACCESSORIES. COORDINATE WITH ELECTRICAL, HEATING AND VENTILATION WHERE APPLICABLE. PROVIDE ACCESS DOORS THROUGH CASEWORK BACKS AND SIDES WHERE VALVES AND CONTROLS MUST BE ACCESSED. SEE ITEMS CALLED OUT ON ELEVATIONS AND ENLARGED PLANS AND ASSOCIATED KEY NOTES ON SHEET A2.5.
- BUILT IN WOOD BENCH, 2 & 7/A11.1, TYP. LENGTH AS DETAILED ON PLAN.
- INSTALL SALVAGED ART PANEL OR ITEM IDENTIFIED
- INSTALL NEW ROLLER BLIND AT WINDOW, MOTORIZED WHERE INDICATED.
- GWB WALLS AND SOFFIT PAINTED ACCENT COLOR, @ ALCOVES, TYP.
- SPACE FOR RECYCLING MODULE (NIC).
- PROVIDE (4) 18" DEEP PLASTIC LAMINATE FACED SHELF WITH WOOD EDGE, FULL LENGTH OF WALL, SPACED 18" OC VERTICALLY FROM 24" AFF, HEAVY-DUTY ADJUSTABLE TYPE STEEL BRACKETS ON CONTINUOUS WALL TRACKS ON EACH STUD -24" O.C. TYP.
- PROVIDE (2) 24" AND (2) 18" DEEP PLASTIC LAMINATE FACED SHELF WITH WOOD EDGE FULL LENGTH OF WALL, SPACED 18" OC VERTICALLY FROM 24" AFF. HEAVY-DUTY ADJUSTABLE TYPE STEEL BRACKETS ON CONTINUOUS WALL TRACKS ON EACH STUD -24" O.C. TYP.
- INSTALL SALVAGED WINDOW BLINDS.
- INSTALL NEW GRATING AT PIT
- INSTALL NEW EXTERIOR WINDOWS, SILL AND GWB RETURNS. PAINT TO MATCH EXISTING CONDITIONS, U.O.N.
- (N) SS COUNTERTOP AT OVERHEAD COILING COUNTER DOOR - 8/A11.1
- BID ALTERNATE #5: INSTALL NEW GYM FLOOR, NEW PAINT AT WALLS & CEILINGS, AND NEW LIGHTING. REINSTALL SALVAGED ART PANELS AT WALLS (12 PANELS).
- SWITCH CLOSET - COORDINATE W/ ELECTRICAL.
- INSTALL NEW PRE-ENGINEERED STEEL STAIR, LANDING, AND HANDRAIL.
- NICHE FOR TRASH RECEPTACLE
- DISPLAY CASE - SEE DETAILS AT 5 AND 6/A11.0
- NEW SOLID SURFACES WINDOW SILL
- NEW PAINTED WOOD WINDOW SILL



1 AREA C FLOOR PLAN
1/8" = 1'-0"



NorthWind Architects LLC
119A 2ND ST.
JUNEAU, AK 99801
PH #907.586.6150
FX #907.586.6181
WWW.NORTHWINDARCH.COM

IF THE ABOVE DIMENSION DOES NOT EQUAL EXACTLY 1", THIS DRAWING HAS BEEN ENLARGED OR REDUCED, AFFECTING ALL LABELLED SCALES

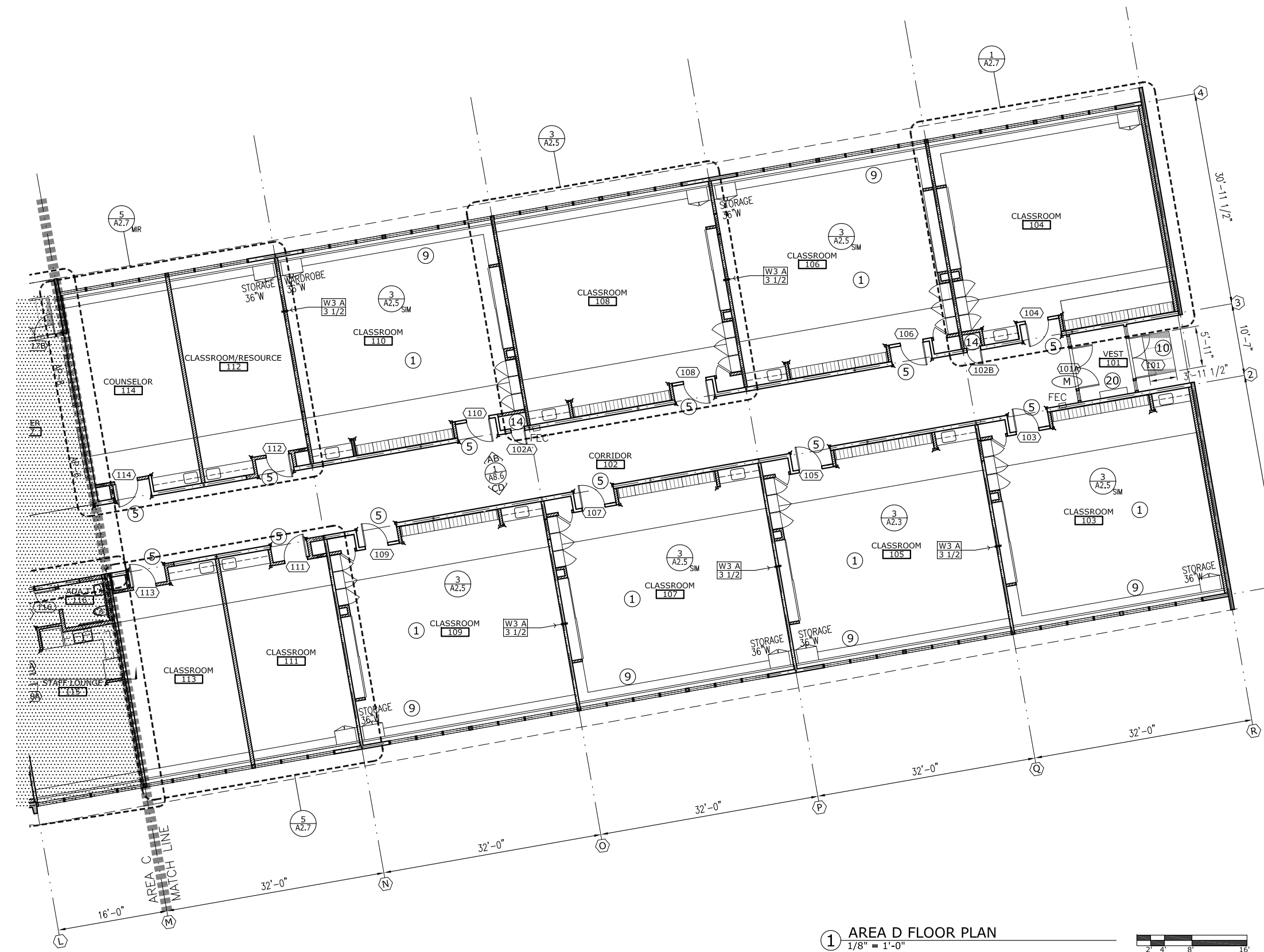
**GASTINEAU ELEMENTARY SCHOOL
RENOVATION**
CBJ Contract No. E11-137
JUNEAU, ALASKA

SHEET TITLE:
**AREA C
FLOOR PLAN**

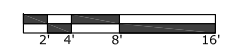
DATE: NOV. 15, 2010
REVISION: DEC. 10, 2010
CHECKED BY: SB
DRAWN: FD, GG, EK, SB

SHEET #
A2.2

Addendum No. 2



① AREA D FLOOR PLAN
1/8" = 1'-0"



FLOOR PLAN GENERAL NOTES:

- WHERE WALLS AND DEVICES ARE REMOVED IN DEMOLITION, EXTEND NEW SCHEDULED FINISH ACROSS BREACH IN TYPICAL ASSEMBLY.
- SEE ENLARGED FLOOR PLANS FOR WALL TYPE AND DETAIL TAGS NOT SHOWN AT THIS SCALE.
- WHERE NEW DEVICES ARE TO BE INSTALLED AT EXISTING ASSEMBLIES, , CUT AND PATCH WALL ASSEMBLY AS REQUIRED FOR INSTALLATION.

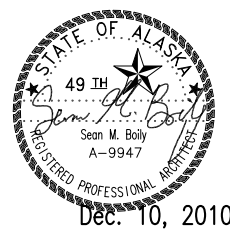
FLOOR PLAN LEGEND:

- (N) WALL, TYP. COORDINATE W/ WALL TYPE SCHEDULE. WALL TYPE W1A/3-1/2 TYP. UNLESS PART OF EXISTING WALL SYSTEM, OR UON. ASSEMBLY DEPTH TO MATCH ADJACENT EXISTING, UON.
- (E) WALL TO REMAIN, TYP. REPAIR AS REQUIRED FOR SPECIFICS OR NOTED FINISH. COORDINATE (N) MATERIAL APPLIED WITH STRUCTURAL DRAWINGS AND WITH FINISH SCHEDULE. COORDINATE INSTALLATION OF NEW FRAMING AND FINISHES IN ASSOCIATION WITH ADJACENT DEMOLITION. DOT-HATCH = CONCRETE.

NOTE: CORNER GUARDS ARE FULL HEIGHT OF WALL, TYPICAL.
TYPE 1 = WOOD PER, PER DETAIL 1/A11.7 @ CORRIDORS AND COMMONS
TYPE 2 = 2.25X2.25 18 GA STAINLESS STEEL TO 60" AFF, PER DETAIL, ALL OTHER U.O.N.

TYP. NEW CONSTRUCTION KEY NOTES:

- INSTALL NEW CASEWORK AND ACCESSORIES. COORDINATE WITH ELECTRICAL, HEATING AND VENTILATION WHERE APPLICABLE. PROVIDE ACCESS DOORS THROUGH CASEWORK BACKS AND SIDES WHERE VALVES AND CONTROLS MUST BE ACCESSED. SEE ITEMS CALLED OUT ON ELEVATIONS AND ENLARGED PLANS AND ASSOCIATED KEY NOTES ON SHEET A2.5.
- BUILT IN WOOD BENCH, 2 & 7/A11.1, TYP. LENGTH AS DETAILED ON PLAN.
- INSTALL SALVAGED ART PANEL OR ITEM IDENTIFIED
- INSTALL NEW ROLLER BLIND AT WINDOW, MOTORIZED WHERE INDICATED.
- GWB WALLS AND SOFFIT PAINTED ACCENT COLOR, @ ALCOVES, TYP.
- SPACE FOR RECYCLING MODULE (NIC).
- PROVIDE (4) 18" DEEP PLASTIC LAMINATE FACED SHELF WITH WOOD EDGE, FULL LENGTH OF WALL, SPACED 18" OC VERTICALLY FROM 24" AFF, HEAVY-DUTY ADJUSTABLE TYPE STEEL BRACKETS ON CONTINUOUS WALL TRACKS ON EACH STUD -24" O.C. TYP.
- PROVIDE (2) 24" AND (2) 18" DEEP PLASTIC LAMINATE FACED SHELF WITH WOOD EDGE FULL LENGTH OF WALL, SPACED 18" OC VERTICALLY FROM 24" AFF. HEAVY-DUTY ADJUSTABLE TYPE STEEL BRACKETS ON CONTINUOUS WALL TRACKS ON EACH STUD -24" O.C. TYP.
- INSTALL SALVAGED WINDOW BLINDS.
- INSTALL NEW GRATING AT PIT
- INSTALL NEW EXTERIOR WINDOWS, SILL AND GWB RETURNS. PAINT TO MATCH EXISTING CONDITIONS, U.O.N.
- (N) SS COUNTERTOP AT OVERHEAD COILING COUNTER DOOR - 8/A11.1
- BID ALTERNATE #5: INSTALL NEW GYM FLOOR, NEW PAINT AT WALLS & CEILINGS, AND NEW LIGHTING. REINSTALL SALVAGED ART PANELS AT WALLS (12 PANELS).
- SWITCH CLOSET - COORDINATE W/ ELECTRICAL.
- INSTALL NEW PRE-ENGINEERED STEEL STAIR, LANDING, AND HANDRAIL.
- NICHE FOR TRASH RECEPTACLE
- DISPLAY CASE - SEE DETAILS AT 5 AND 6/A11.0
- NEW SOLID SURFACES WINDOW SILL
- NEW PAINTED WOOD WINDOW SILL
- (E) CUH - PREP AN PAINT TO MATCH WALL COLOR.



NorthWind Architects LLC
119A 2ND ST.
JUNEAU, AK 99801
PH #907.586.6150
FX #907.586.6181
WWW.NORTHWINDARCH.COM

1" = 1'-0"
IF THE ABOVE DIMENSION DOES NOT EQUAL EXACTLY 1", THIS DRAWING HAS BEEN ENLARGED OR REDUCED, AFFECTING ALL LABELLED SCALES

**GASTINEAU ELEMENTARY SCHOOL
RENOVATION**
CBJ Contract No. E11-137
JUNEAU, ALASKA

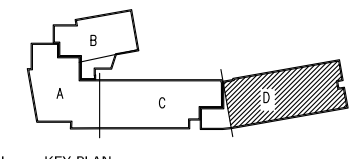
SHEET TITLE:
**AREA D
FLOOR PLAN**

DATE: NOV. 15, 2010
REVISION: DEC. 10, 2010
CHECKED BY: SB
DRAWN: FD, GG, EK, SB

SHEET #

A2.3

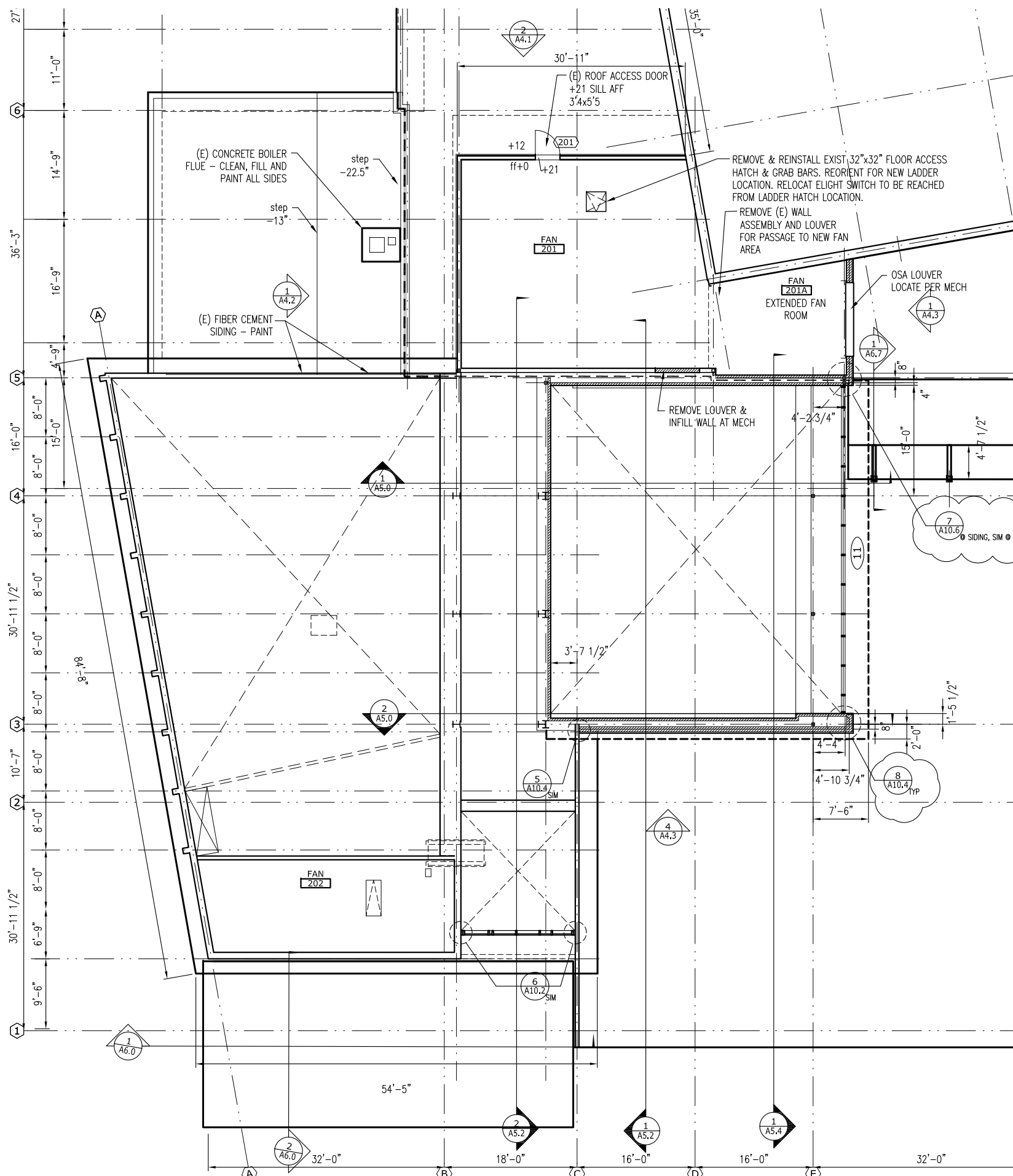
Addendum No. 2



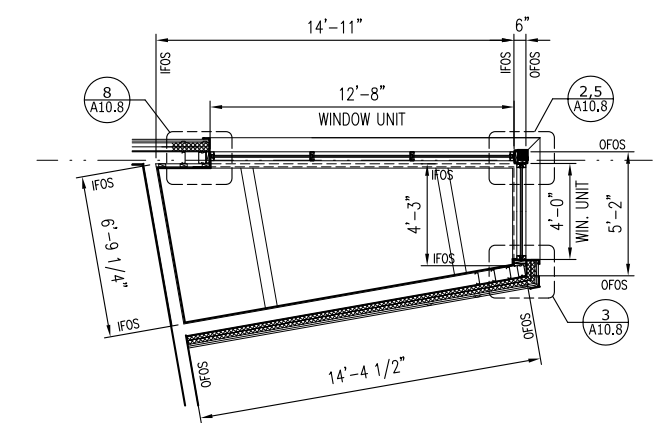
NORTH

PLAN NORTH

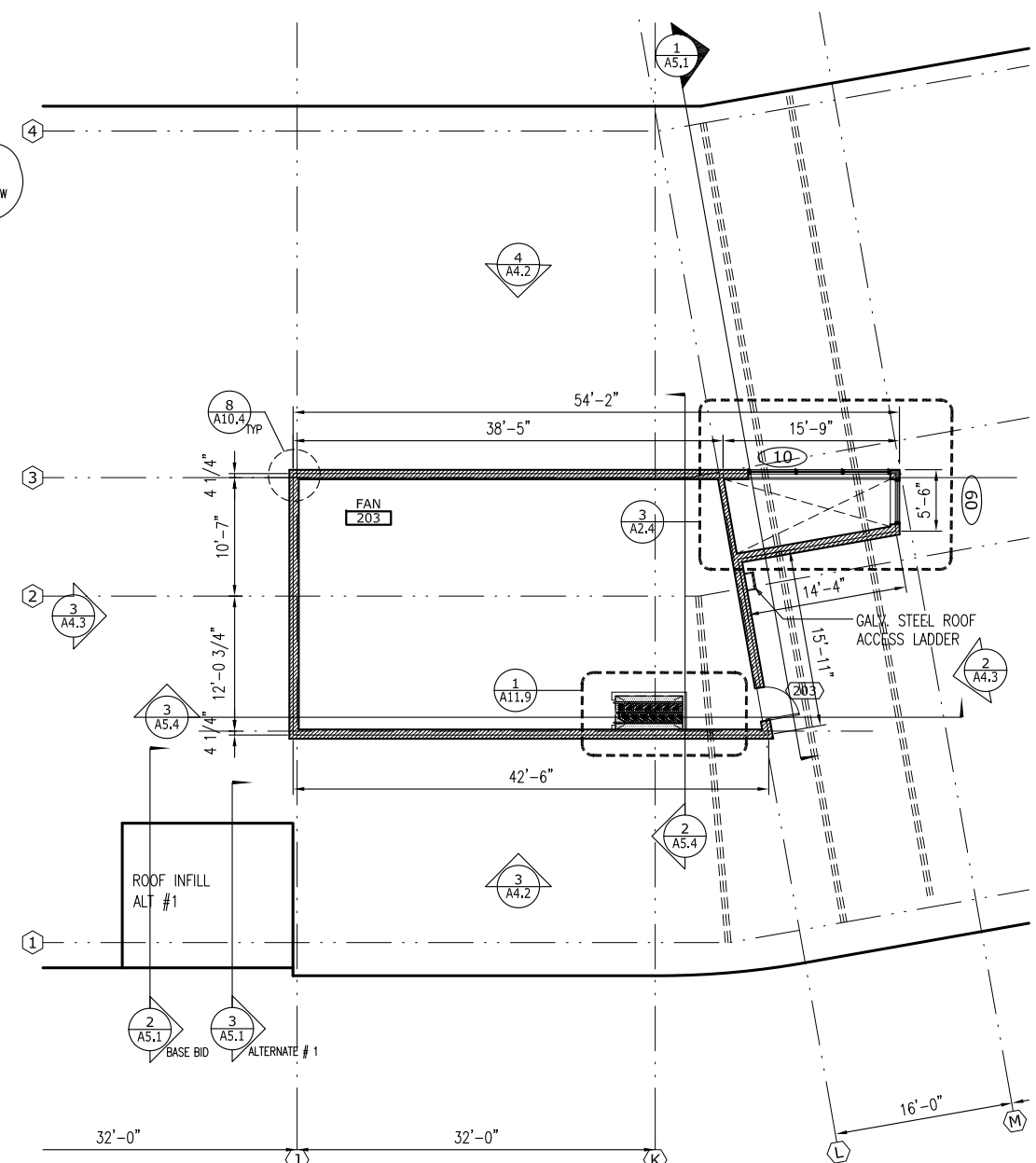
KEY PLAN



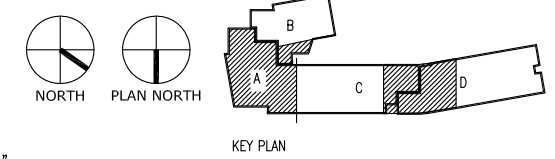
2 ENLARGED FAN PENTHOUSE PLAN
1/8" = 1'-0"



3 ENLARGED CLERESTORY PLAN
1/4" = 1'-0"



1 ENLARGED FAN 200 PENTHOUSE PLAN
1/8" = 1'-0"



NorthWind Architects LLC
119A 2ND ST.
JUNEAU, AK 99801
PH #907.586.6150
FX #907.586.6181
WWW.NORTHWINDARCH.COM

IF THE ABOVE DIMENSION DOES NOT EQUAL EXACTLY 1", THIS DRAWING HAS BEEN ENLARGED OR REDUCED, AFFECTING ALL LABELLED SCALES.

GASTINEAU ELEMENTARY SCHOOL RENOVATION

CBJ Contract No. E11-137
JUNEAU, ALASKA

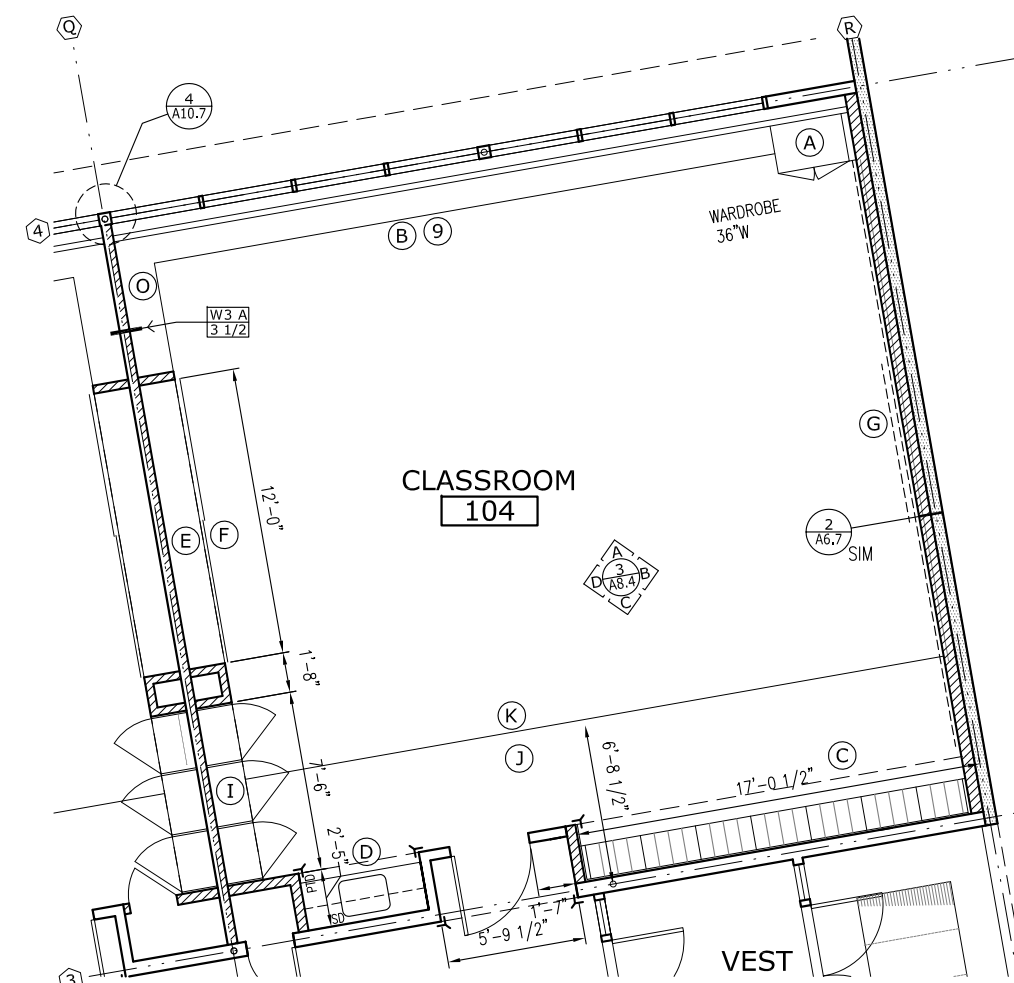
SHEET TITLE:
PENTHOUSE PLAN
ENLARGED

DATE: NOV. 15, 2010
REVISION: DEC. 10, 2010
CHECKED BY: SB
DRAWN: FD, GG, EK, SB

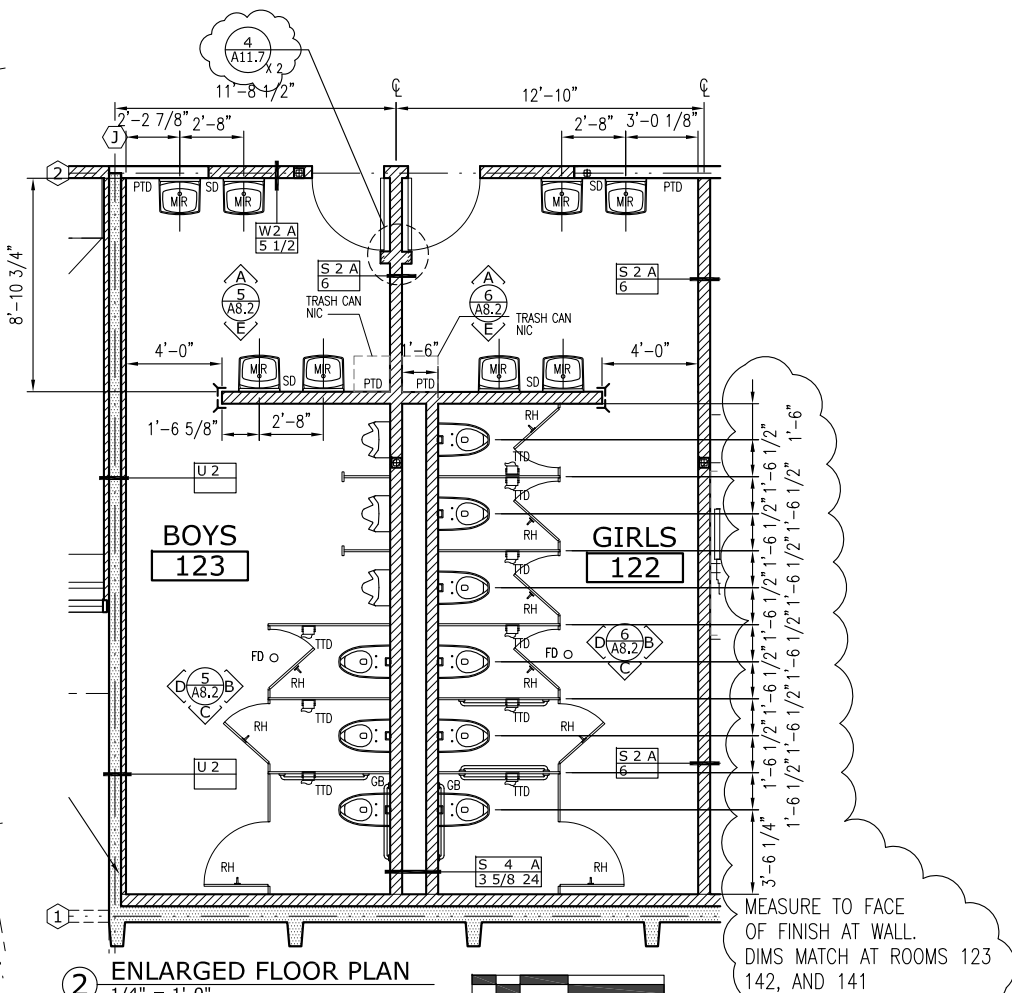
SHEET #

A2.4

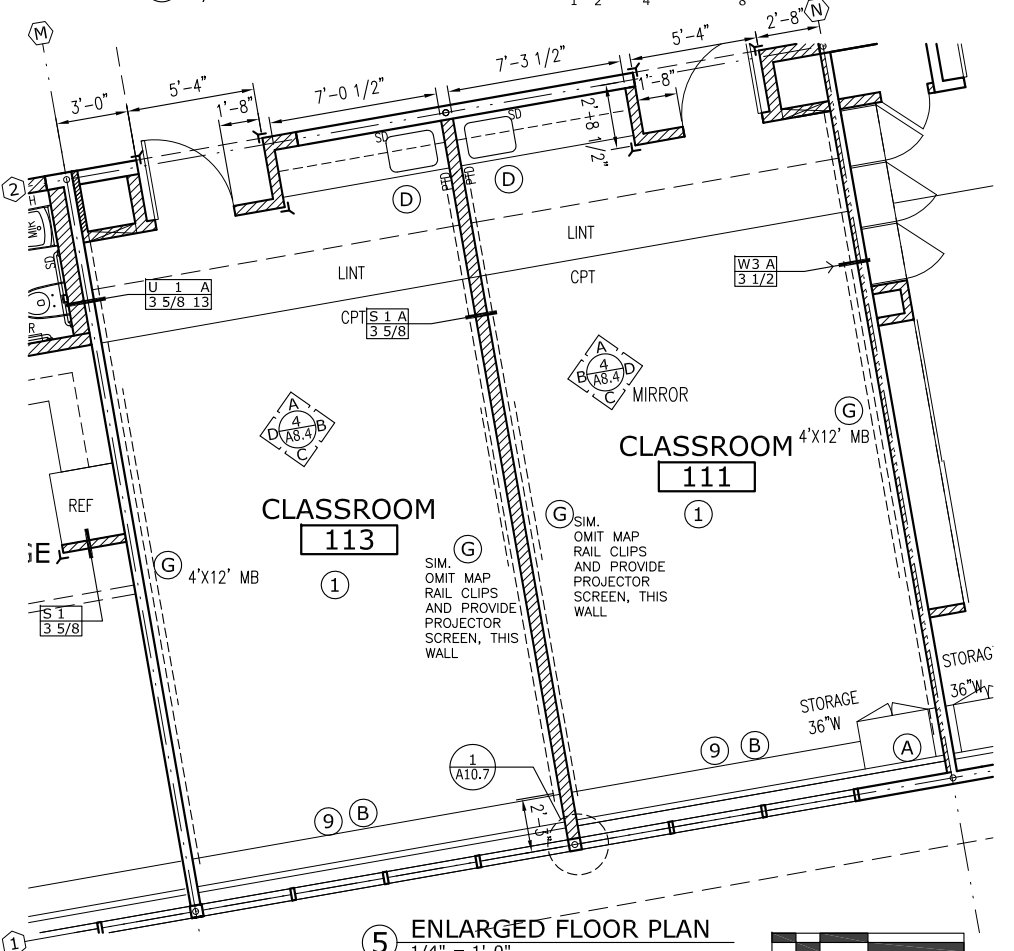
Addendum No. 2



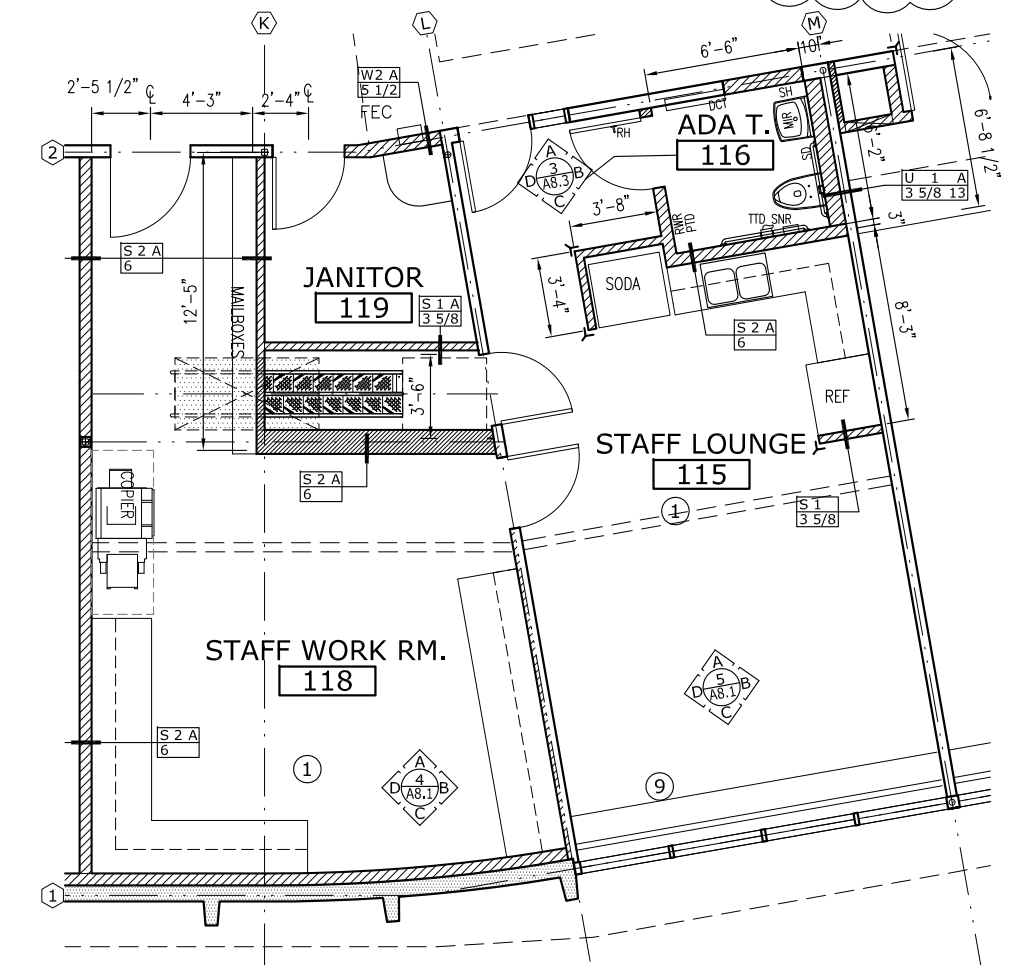
1 ENLARGED FLOOR PLAN
1/4" = 1'-0"



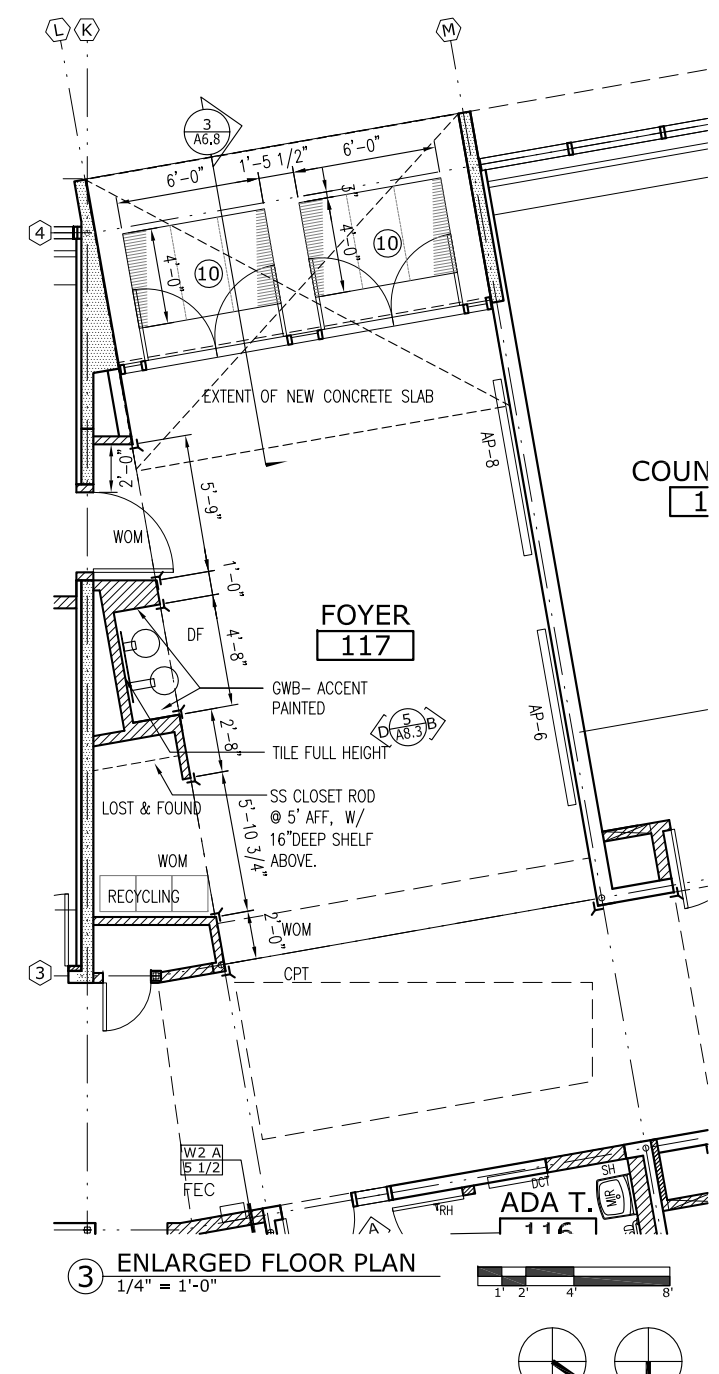
2 ENLARGED FLOOR PLAN
1/4" = 1'-0"



5 ENLARGED FLOOR PLAN
1/4" = 1'-0"



4 ENLARGED FLOOR PLAN
1/4" = 1'-0"



3 ENLARGED FLOOR PLAN
1/4" = 1'-0"

KEYNOTES:
SEE KEYNOTES ON SHEETS A2.0 AND A2.5.



NorthWind Architects LLC
119A 2ND ST.
JUNEAU, AK 99801
PH #907.586.6150
FX #907.586.6181
WWW.NORTHWINDARCH.COM

IF THE ABOVE DIMENSION DOES NOT EQUAL EXACTLY 1", THIS DRAWING HAS BEEN ENLARGED OR REDUCED, AFFECTING ALL LABELLED SCALES.

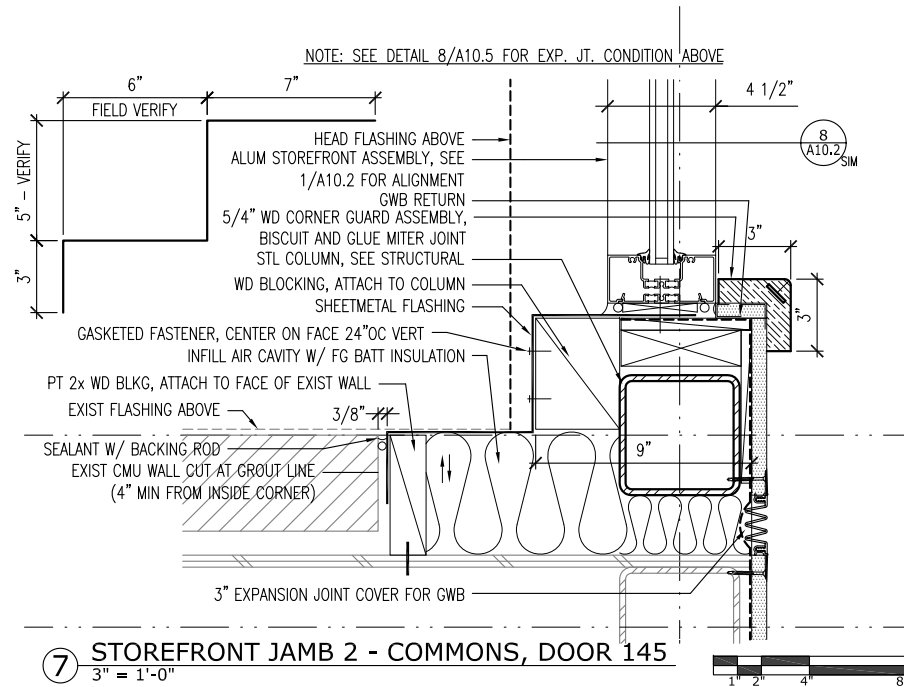
GASTINEAU ELEMENTARY SCHOOL RENOVATION

CBJ Contract No. E11-137
JUNEAU, ALASKA

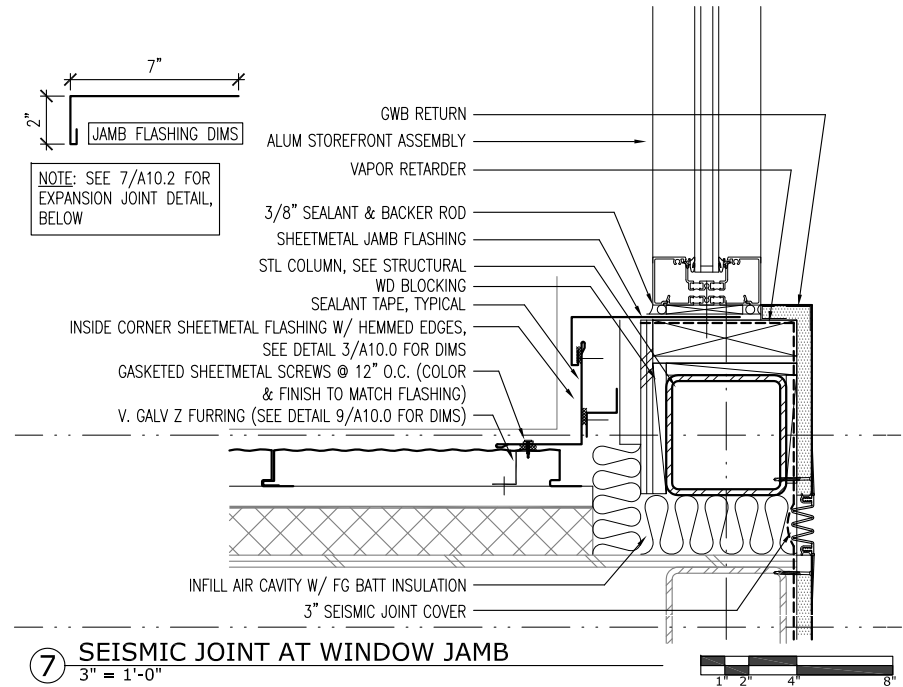
SHEET TITLE:
ENLARGED FLOOR PLANS

DATE: NOV. 15, 2010
REVISION: DEC. 10, 2010
CHECKED BY: SB
DRAWN: FD, GG, EK, SB

SHEET #
A2.7
Addendum No. 2



SHEET A10.2
ASK-1



SHEET A10.6
ASK-2

