

## SHEET INDEX

DOUGLAS ISLAND

WEST JUNEAU PUMP STATION

WEST JUNEAU

DOUGLAS

JUNEAU

OUTER DRIVE PUMP STATION

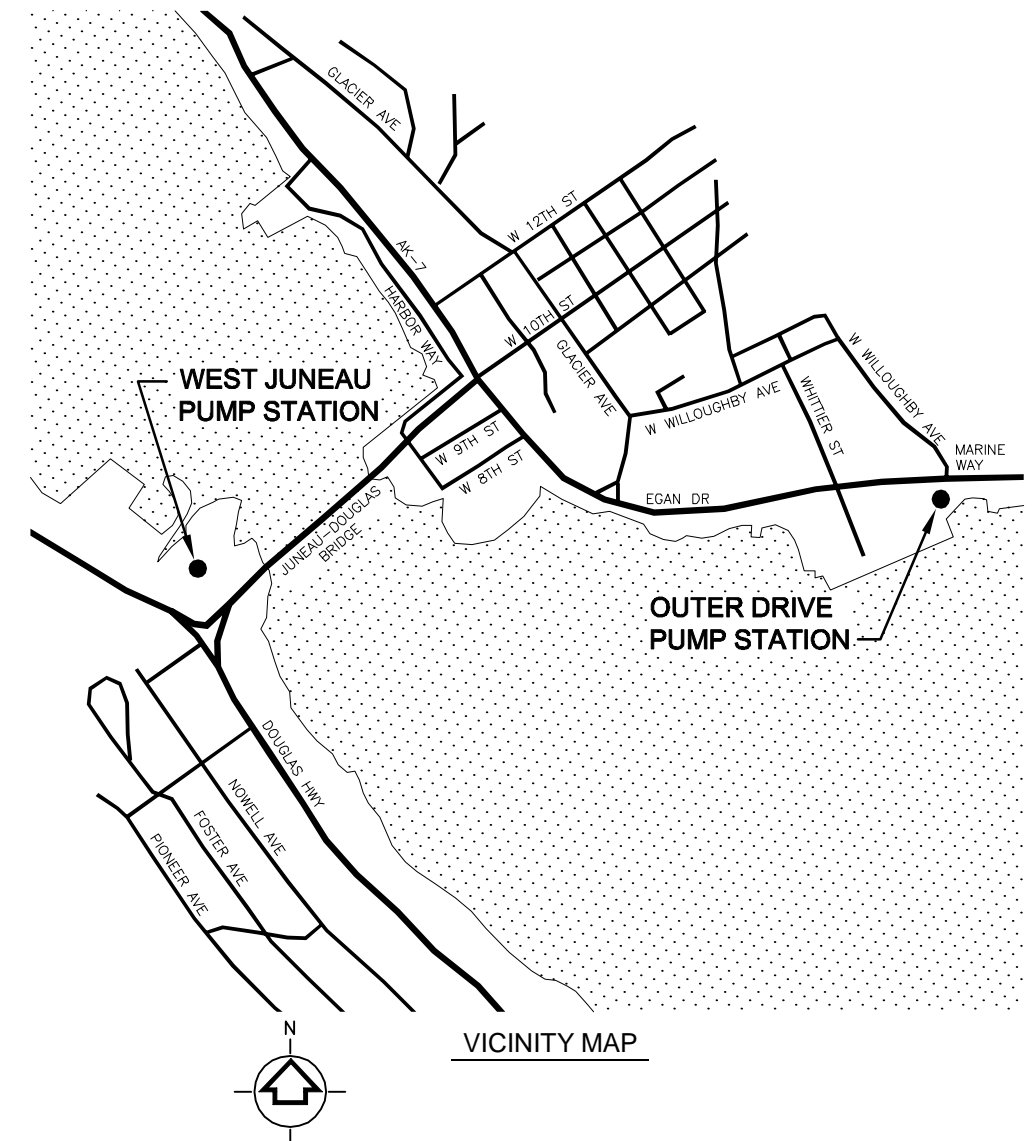
Gastineau Channel

Lemon Creek

Salmon Creek

N

LOCATION MAP



Approved By

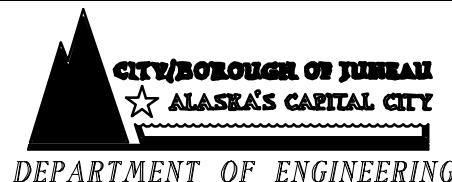
Director of Public Works

Chief CIP Engineer



## TETRA TECH

www.tetratech.com  
230 South Franklin, Suite 212  
Juneau, Alaska 99801  
Phone: 907-586-6400 Fax: 907-463-3677



OUTER DRIVE  
AND WEST JUNEAU  
PUMP STATION REPAIRS  
CBJ CONTRACT E11-029

# PROJECT TITLE, LOCATION AND VICINITY MAPS AND SHEET INDEX

SHEET NO. \_\_\_\_\_

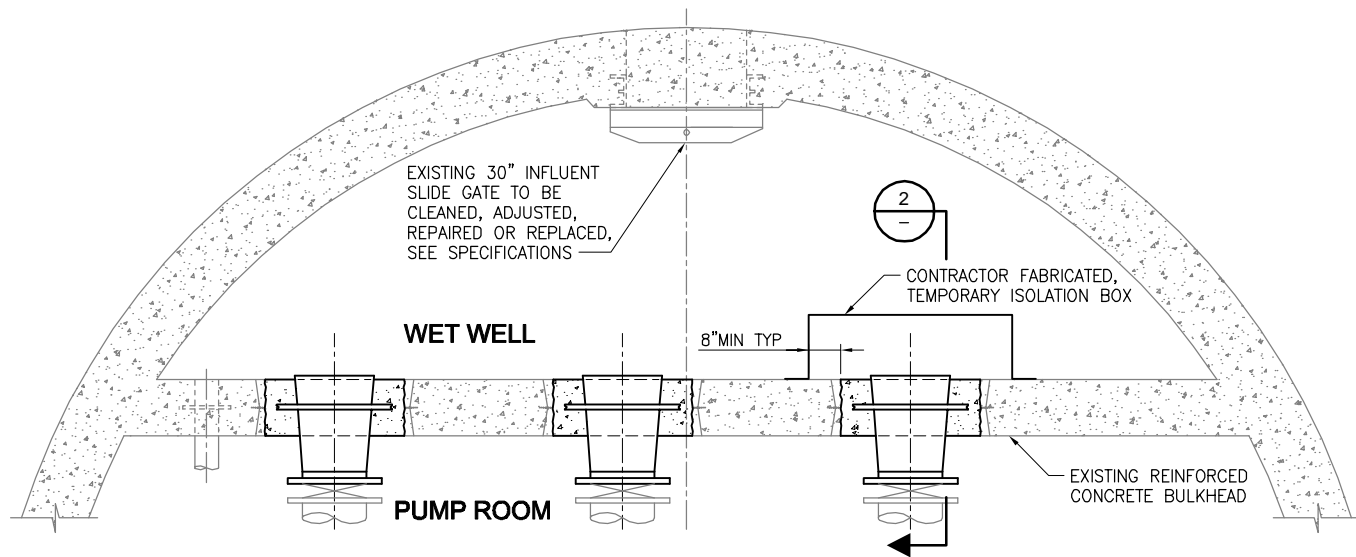
51

TOTAL SHEETS

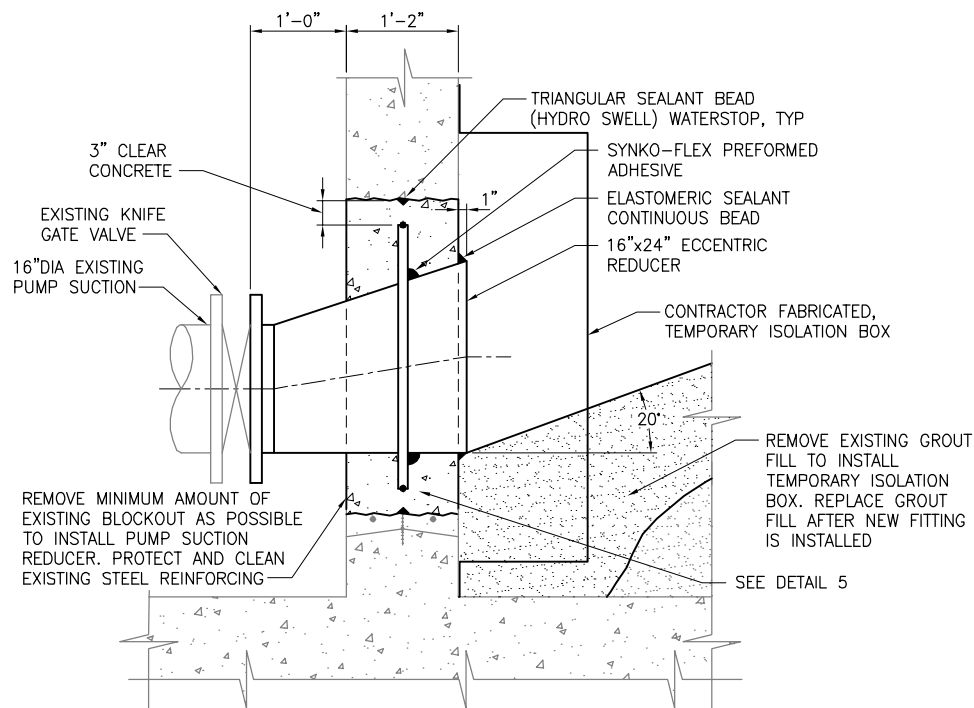
of 8





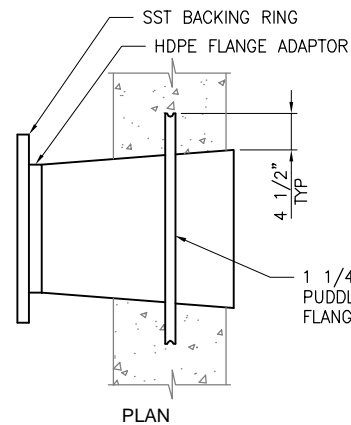


PLAN  
1' 0' 1' 2' 3' 4'  
SCALE IN FEET

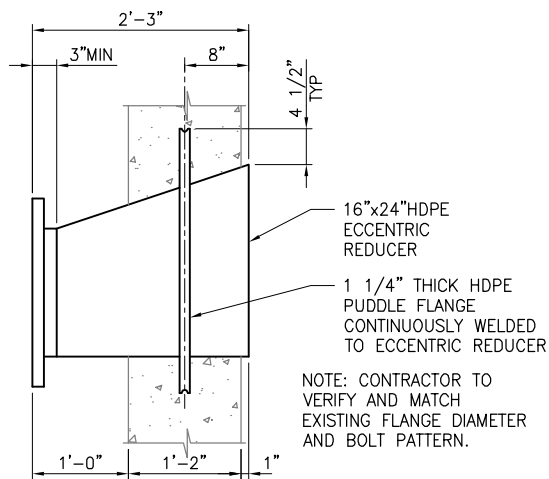


PUMP SUCTION REDUCER  
INSTALLATION SECTION

1' 0' 1' 2'  
SCALE IN FEET



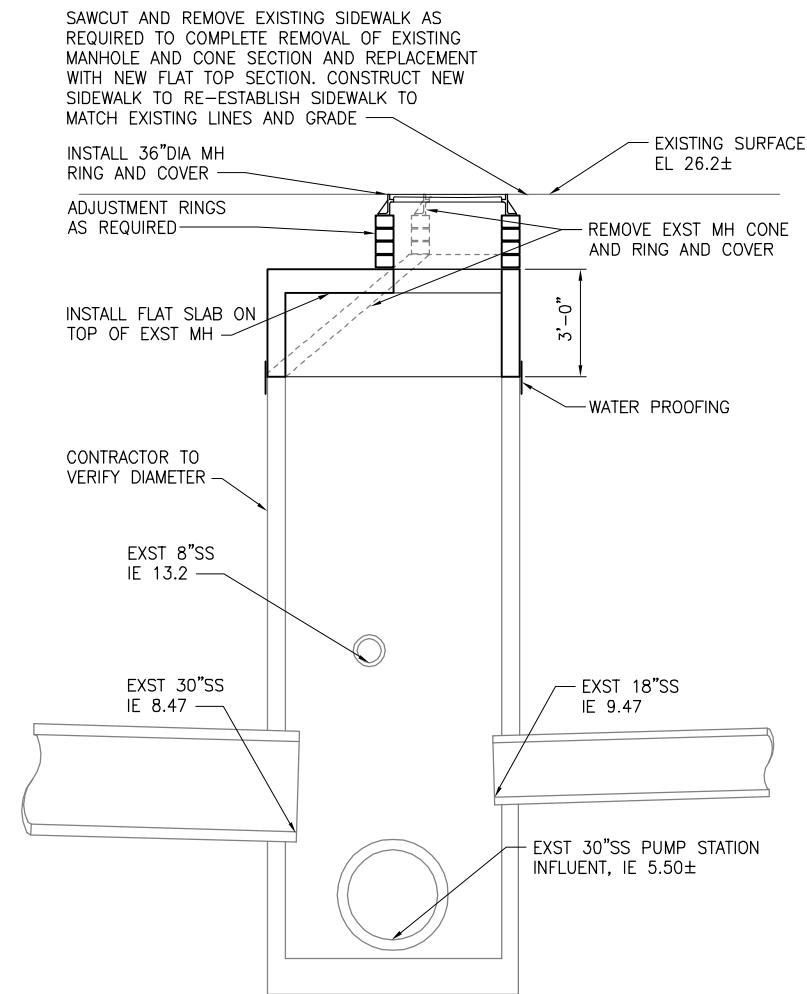
PLAN



ELEVATION

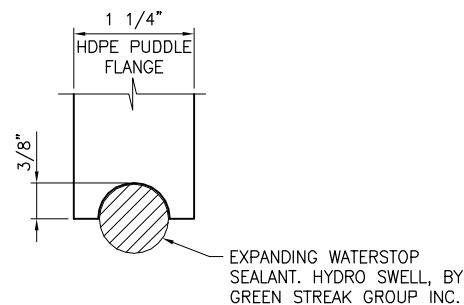
ECENTRIC REDUCER  
FABRICATION DETAIL

1' 0' 1' 2' 1'  
SCALE IN FEET



EXISTING PUMP STATION INFLUENT MANHOLE MODIFICATIONS

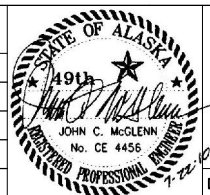
DETAIL  
2' 0' 2' 4'  
SCALE IN FEET



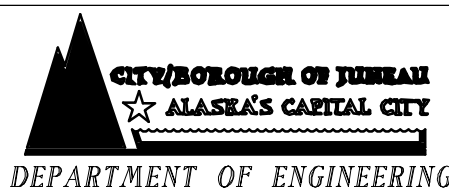
PUDDLE FLANGE  
WATERSTOP DETAIL

1' 0' 1' 2'  
SCALE IN FEET

STATUS	DATE PRINTED	
DATE	REVISIONS	BY



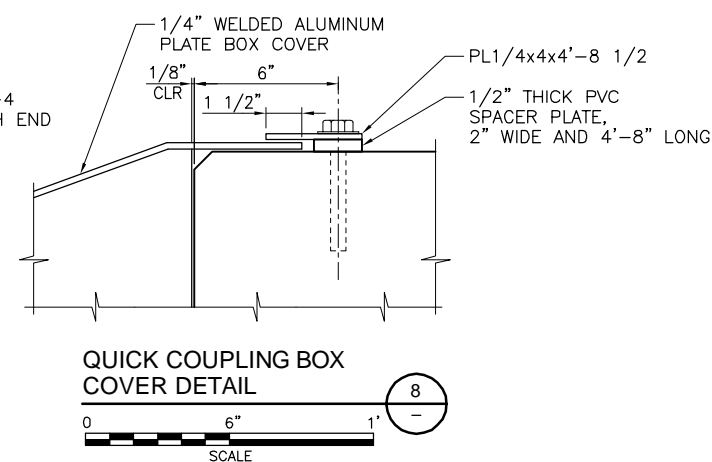
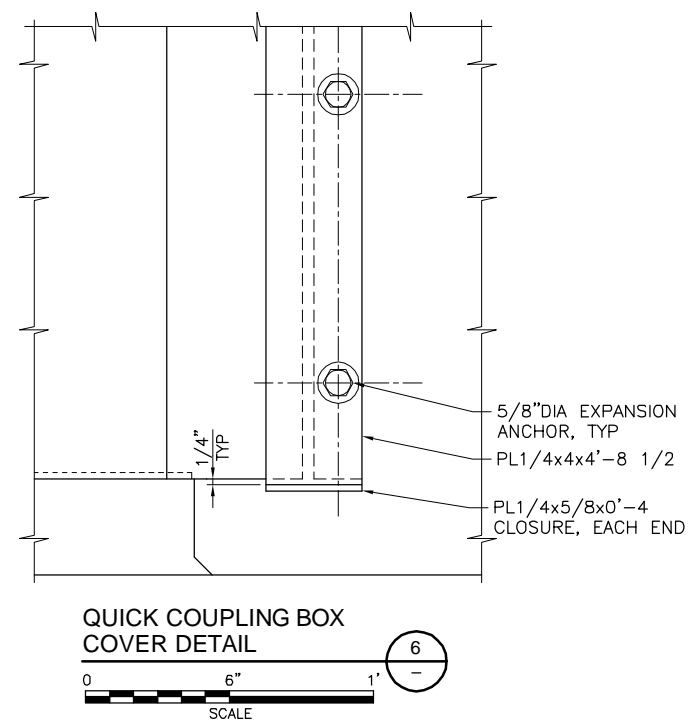
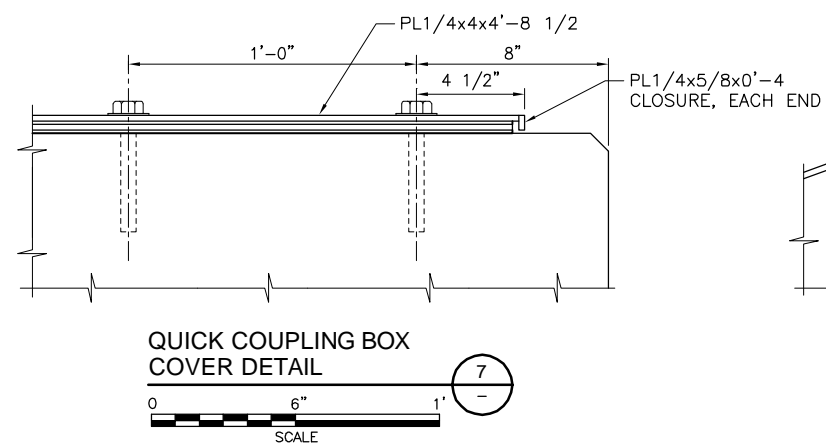
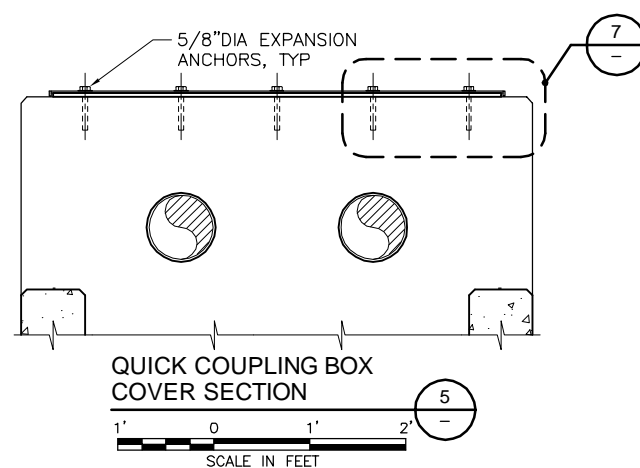
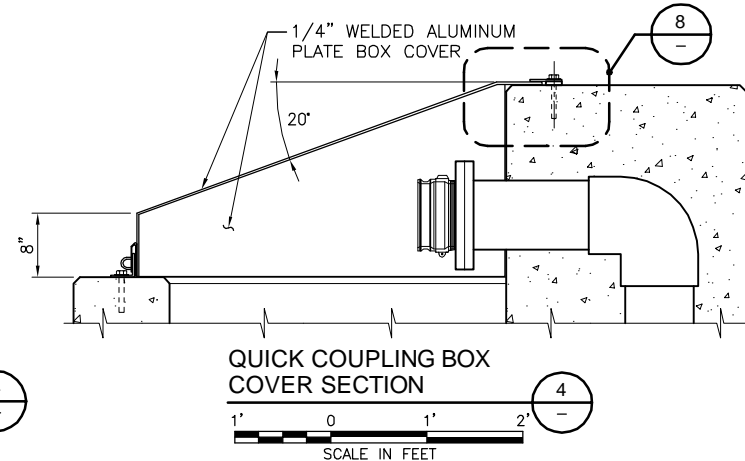
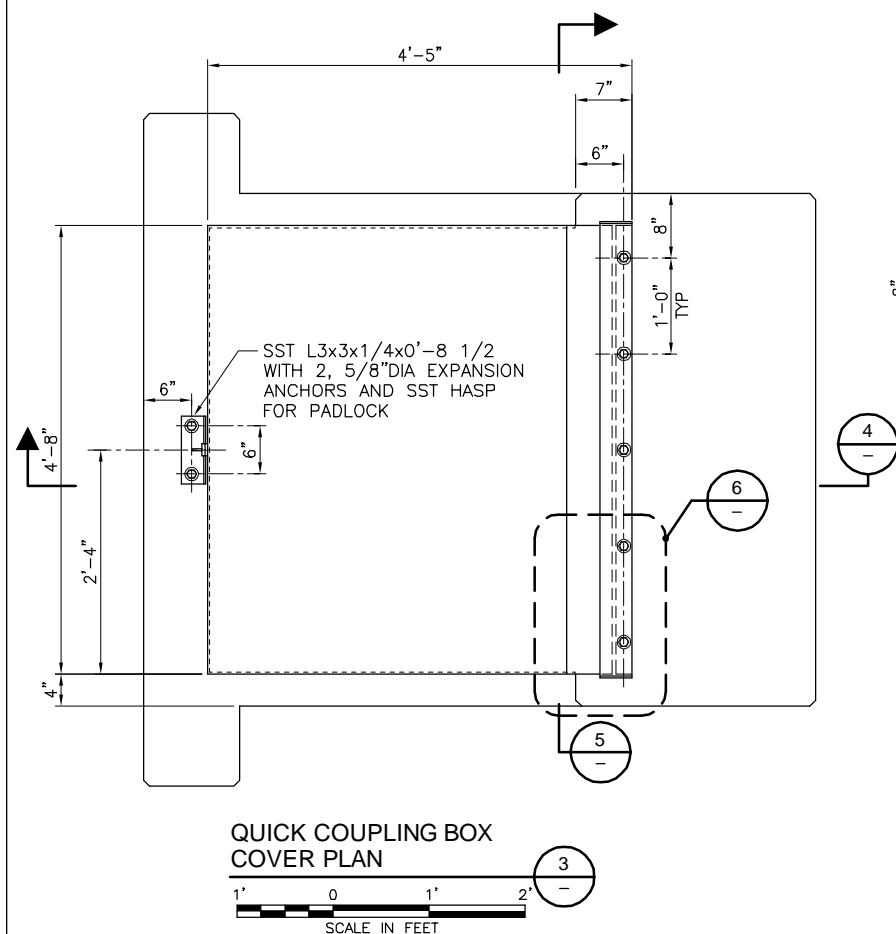
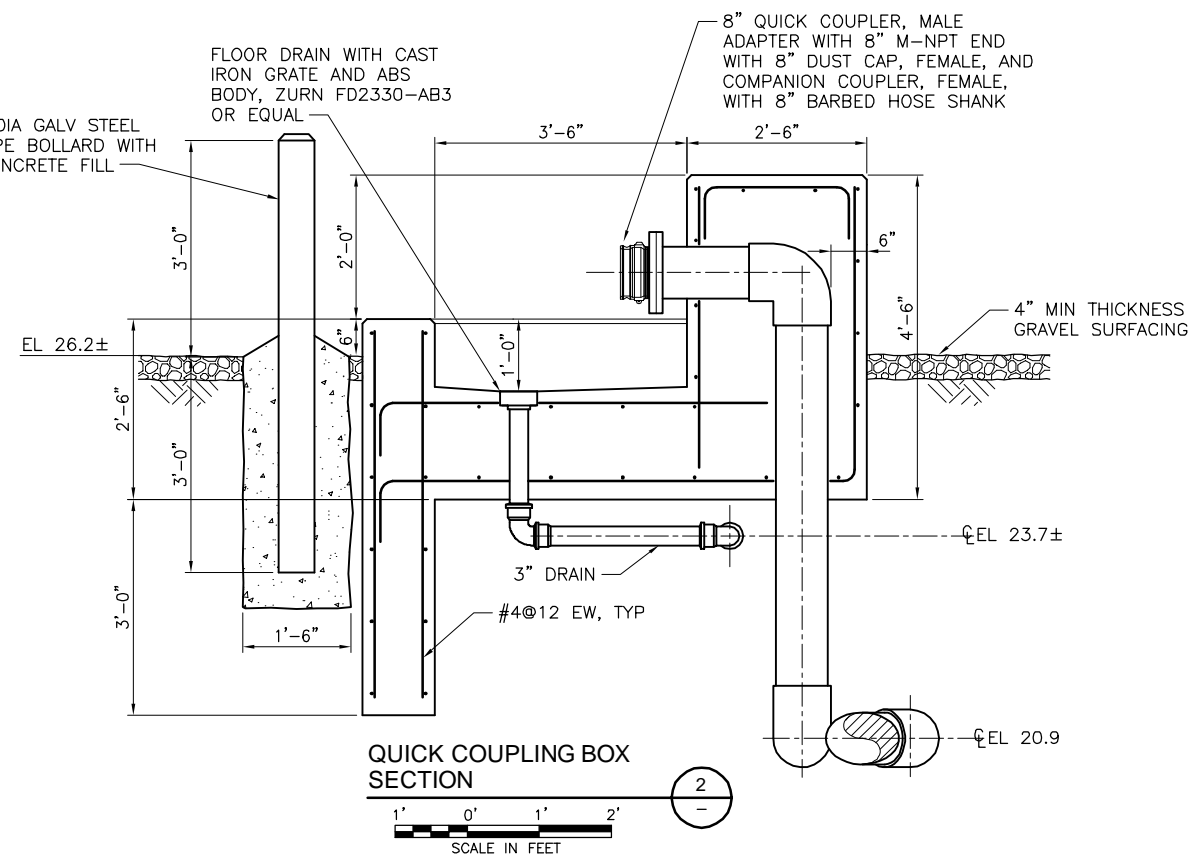
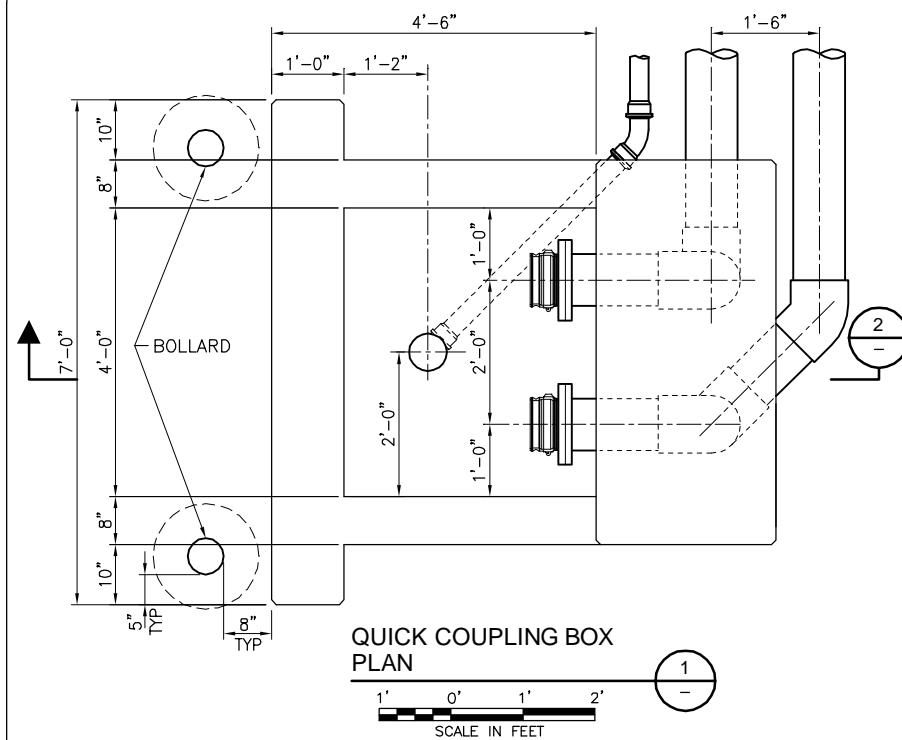
DRAWN BY: CAD DESIGNED BY: JAM CHECKED BY: DB DATE: July 2010



OUTER DRIVE  
AND WEST JUNEAU  
PUMP STATION REPAIRS  
CBJ CONTRACT E11-029

OUTER DRIVE  
PUMP STATION  
REPAIR DETAILS

SHEET NO.  
**C103**  
TOTAL SHEETS  
4 of 8



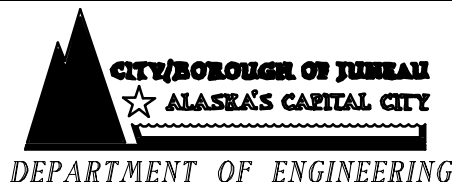
STATUS	DATE PRINTED	
DATE	REVISIONS	BY

STATE OF ALASKA  
1994  
JOHN C. MCGLENN  
No. CE 4456  
REGISTERED PROFESSIONAL ENGINEER  
7-22

DRAWN BY: CAD	DESIGNED BY: JAM	CHECKED BY: DB	DATE: July 2010
---------------	------------------	----------------	-----------------



**TETRA TECH**  
www.tetrattech.com  
230 South Franklin, Suite 212  
Juneau, Alaska 99801  
ne: 907-586-6400 Fax: 907-463-3677



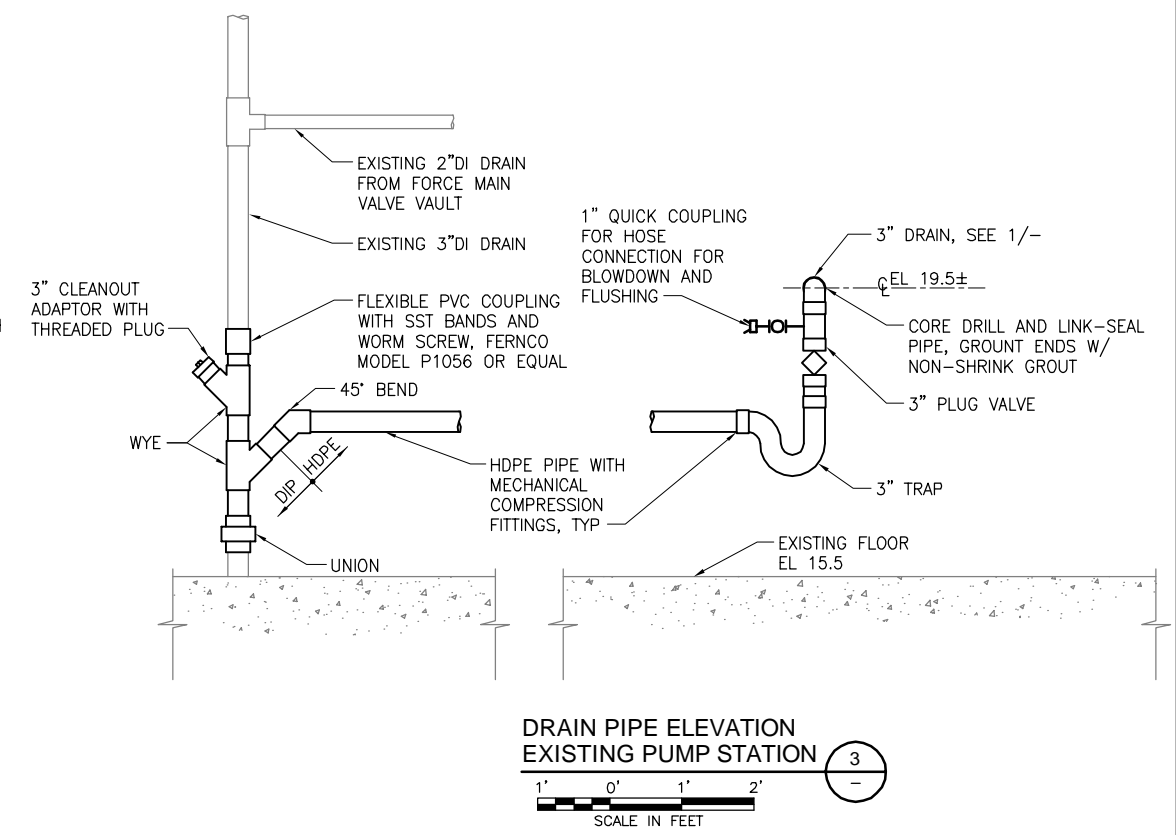
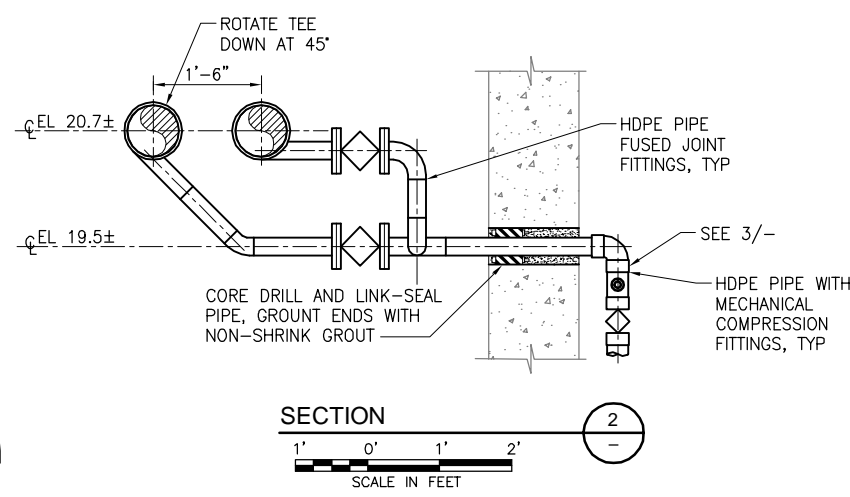
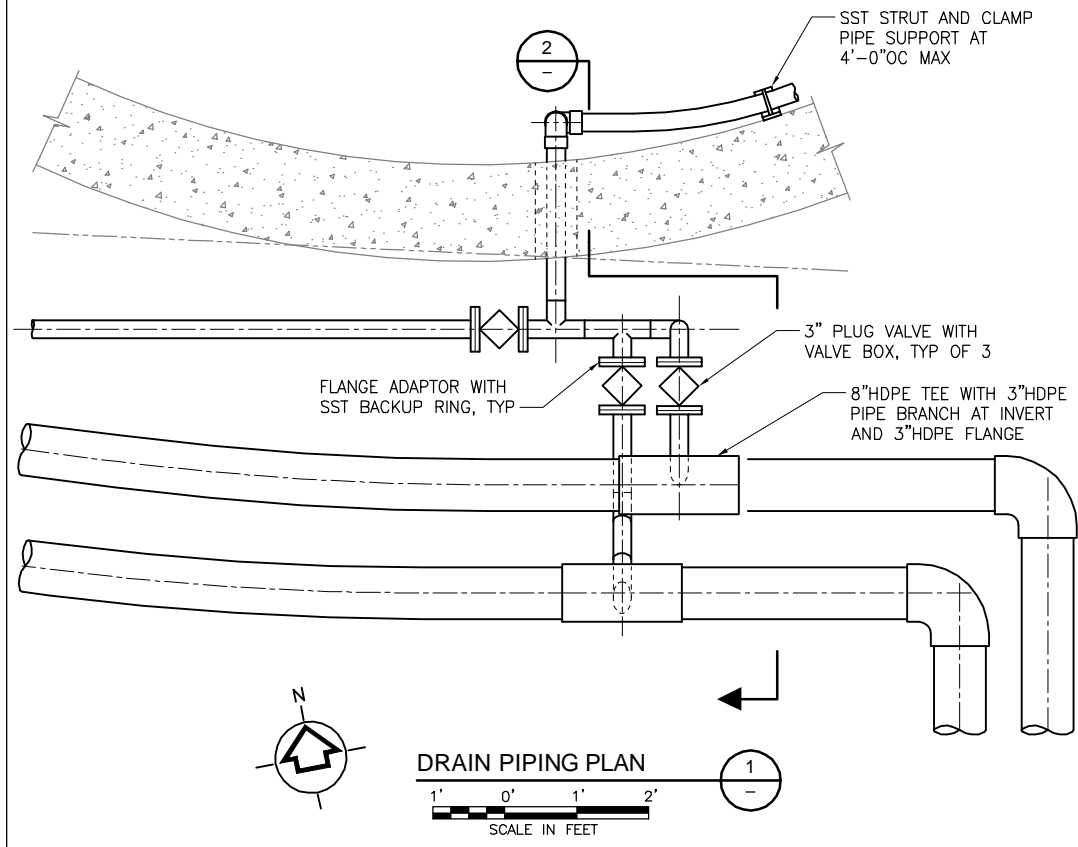
OUTER DRIVE  
AND WEST JUNEAU  
PUMP STATION REPAIRS  
CBJ CONTRACT E11-029

# OUTER DRIVE PUMP STATION QUICK COUPLING BOX SECTIONS AND DETAILS

SHEET NO.  
**C104**

---

TOTAL SHEETS  
**5 of 8**



STATUS	DATE PRINTED	
DATE	REVISIONS	BY



DRAWN BY: CAD DESIGNED BY: JAM CHECKED BY: DB DATE: July 2010

**TETRA TECH**  
www.tetratech.com  
230 South Franklin, Suite 212  
Juneau, Alaska 99801  
Phone: 907-586-6400 Fax: 907-463-3677

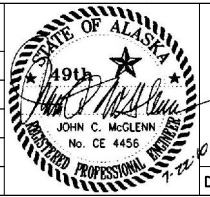
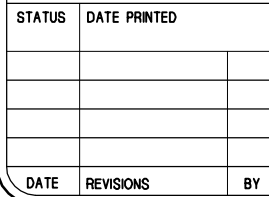
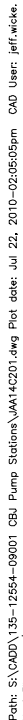
**CITY/BOROUGH OF JUNEAU**  
★ **ALASKA'S CAPITAL CITY**  
**DEPARTMENT OF ENGINEERING**

**OUTER DRIVE  
AND WEST JUNEAU  
PUMP STATION REPAIRS  
CBJ CONTRACT E11-029**

**OUTER DRIVE  
PUMP STATION  
PIPE DRAIN DETAILS**

SHEET NO.  
**C105**  
TOTAL SHEETS  
**6 of 8**

Path: S:\CAD\0135-12554-09001 CBJ Pump Stations\JAA1410106.dwg Plot date: Jul 22, 2010-02:05:25pm CAD User: jeff.wicke.  
Xref: Filenote:



DRAWN BY: CAD	DESIGNED BY: JAM	CHECKED BY: DB	DATE: July 2010
---------------	------------------	----------------	-----------------



www.tetrattech.com  
230 South Franklin, Suite 212  
Juneau, Alaska 99801  
Phone: 907-586-6400 Fax: 907-463-3677



**CITY/BOROUGH OF JUNEAU**  
**★ ALASKA'S CAPITAL CITY**  
**DEPARTMENT OF ENGINEERING**

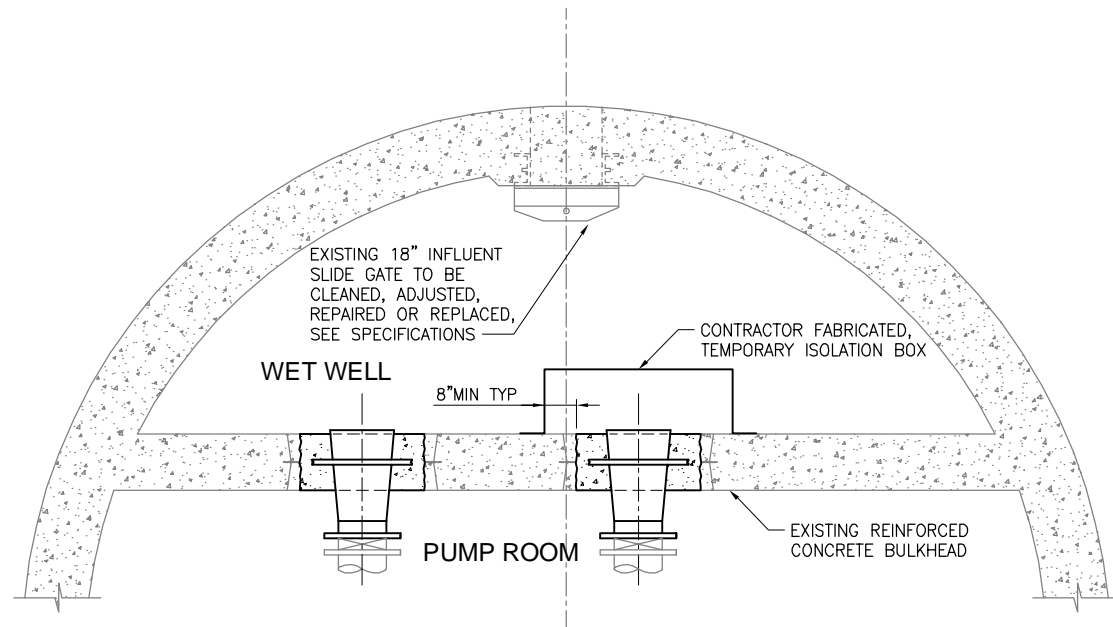
OUTER DRIVE  
AND WEST JUNEAU  
PUMP STATION REPAIRS  
CBJ CONTRACT E11-029

# WEST JUNEAU PUMP STATION SITE PLAN SECTIONS AND DETAILS

SHEET NO.  
**C201**

---

TOTAL SHEETS  
**7 of 8**

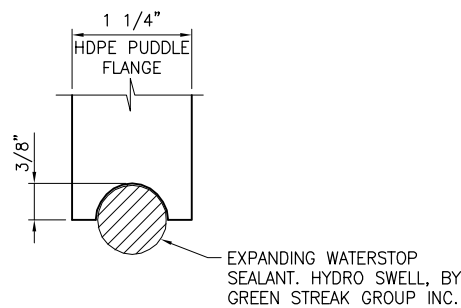


PLAN

1' 0' 1' 2' 3' 4'

SCALE IN FEET

1

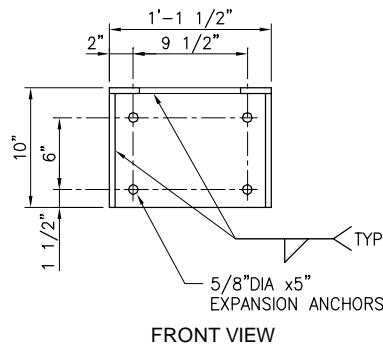
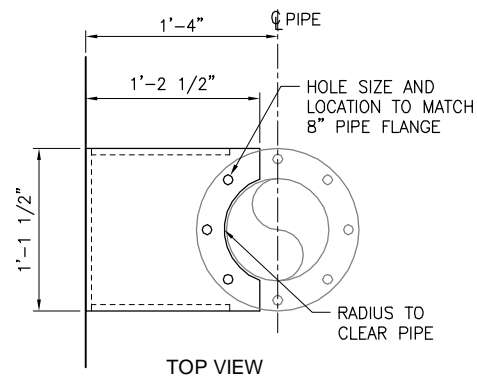


PUDDLE FLANGE WATERSTOP DETAIL

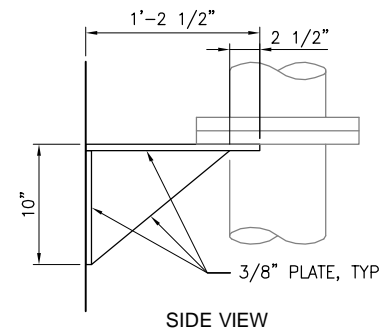
1 0 1 2

1=1

4



NOTE: HOT DIP GALVANIZE PIPE SUPPORT BRACKET AFTER FABRICATION.



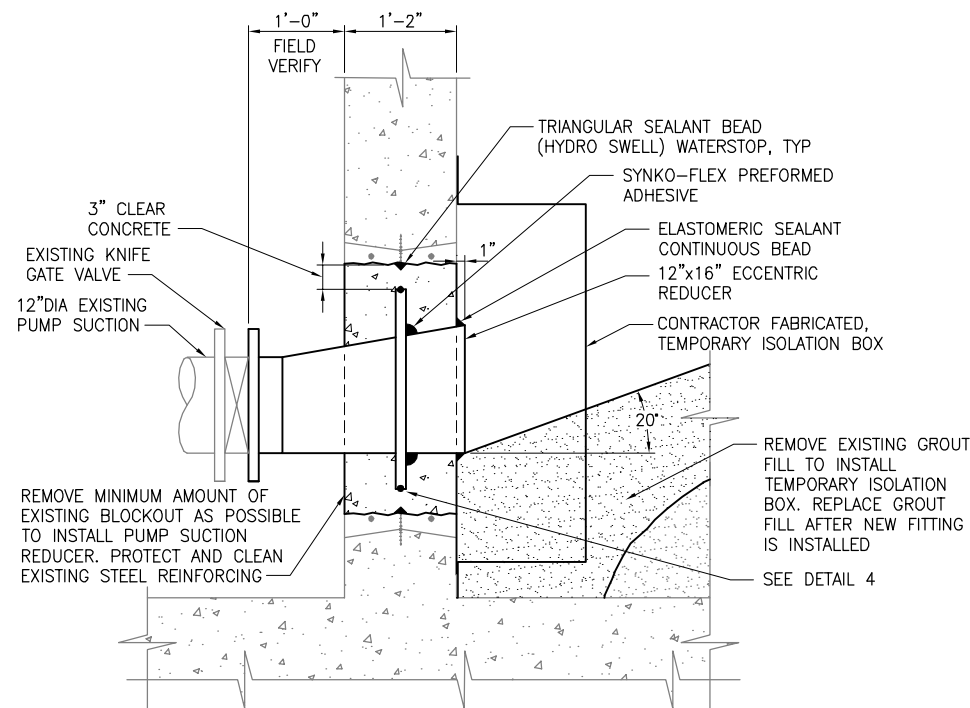
PIPE SUPPORT DETAIL

0' 1' 2'

SCALE IN FEET

5

C201

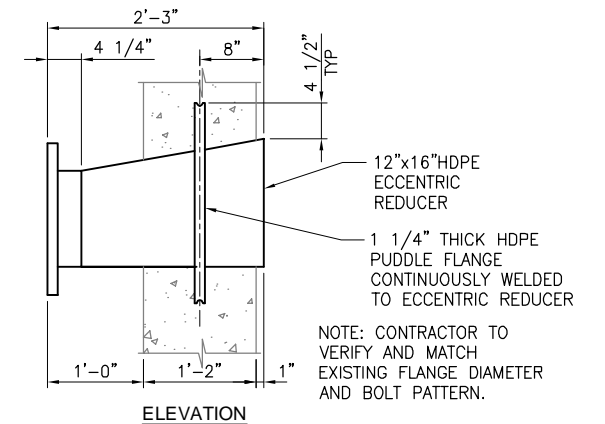
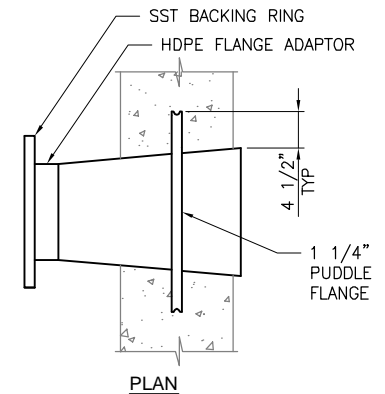


SECTION

1' 0 1' 2'

SCALE IN FEET

2



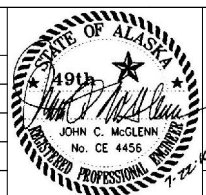
ECCENTRIC REDUCER FABRICATION DETAIL

1' 0 1' 2'

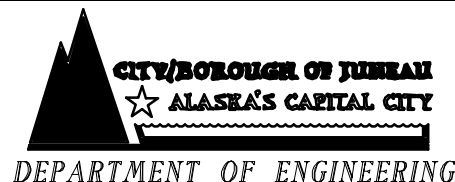
SCALE IN FEET

3

STATUS	DATE PRINTED	
DATE	REVISIONS	BY



DRAWN BY: CAD DESIGNED BY: JAM CHECKED BY: DB DATE: July 2010



OUTER DRIVE AND WEST JUNEAU PUMP STATION REPAIRS CBJ CONTRACT E11-029

WEST JUNEAU PUMP STATION REPAIR DETAILS

SHEET NO. C202  
TOTAL SHEETS 8 of 8