



## ADDENDUM TO THE CONTRACT

for the

### CBJ Water Reservoir 2010 Corrosion Repairs & Valve Vault Painting

Contract No. E10-217

**ADDENDUM NO.:** ONE

**CURRENT DEADLINE FOR BIDS:**

July 7, 2010

**PREVIOUS ADDENDA:** NONE

**ISSUED BY:**

City and Borough of Juneau  
ENGINEERING DEPARTMENT  
155 South Seward Street  
Juneau, Alaska 99801

**DATE ADDENDUM ISSUED:**

June 17, 2010

The following items of the contract are modified as herein indicated. All other items remain the same. This addendum has been issued and is posted online. Please refer to the CBJ Engineering Contracts Division webpage at:

<http://www.juneau.org/engineering ftp/contracts/Contracts.php>

**INFORMATION ITEM:**

Item No. 1 Included is additional Information on what needs to be painted in the vaults at the Lemon Creek and Auke Lake Reservoirs shown in the attachments from the as-built drawings of the Sheet M-1 Control Valve Piping, Juneau Areawide Water System, 1984 Improvements: Auke Lake and Lemon Creek Reservoirs, By Quadra Engineering,

1. Piping Material List
2. SECTION A
3. Piping Plan

**PROJECT MANUAL:**

Item No. 1 SECTION 00030 - NOTICE INVITING BIDS. PRE-BID CONFERENCE.

**Change** the time and location of the Pre-Bid Conference **from** June 22, 2010 at 10:00 a.m. in the City and Borough of Juneau Engineering Conference Room, 3<sup>rd</sup> Floor, Marine View Center **to** June 22, 2010 at 1:00 p.m. in the **CBJ Water Department Conference Room, at 5433 Shaune Drive**. A walk through of the facilities will follow immediately after the meeting.

Item No. 2      SECTION 00030 – NOTICE INVITING BIDS. DESCRIPTION OF WORK.  
SECTION 00500 – AGREEMENT. ARTICLE 1. WORK, and SECTION 01010 –  
SUMMARY OF WORK Article 1.2 WORK COVERED BY CONTRACT DOCUMENTS,  
**Add the following clarification** to the Base Bid and Additive Alternate No. 1 Scope of  
Work:

Primer and finish coating systems shall be applied to repaired areas only. Work does not  
include re-painting the entire reservoirs.

By: 

Jennifer Mannix,  
Contract Administrator

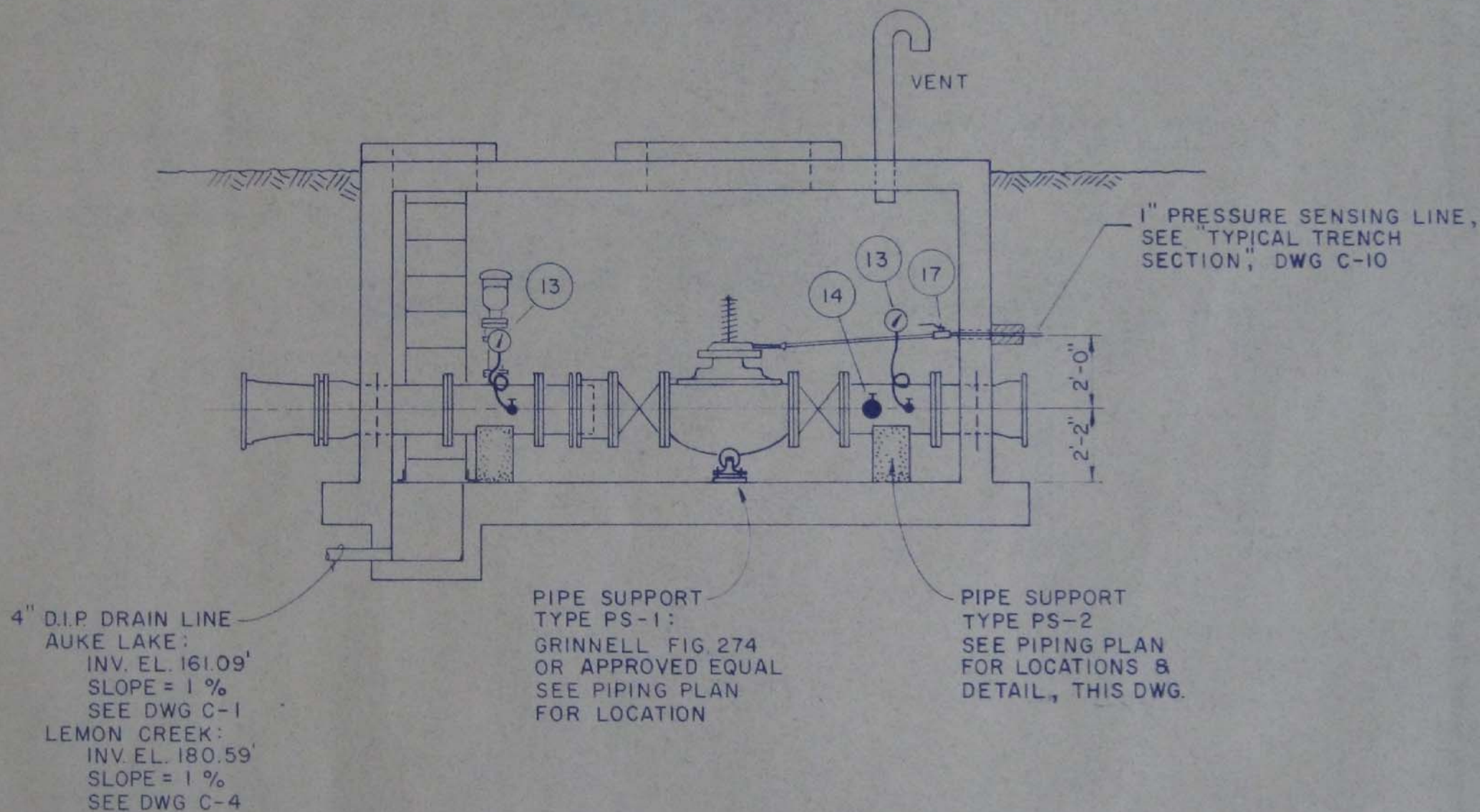
Date: 6/17/10

Total number of pages contained within this Addendum: 5

# PIPING MATERIAL LIST

ITEM NO.	QTY	SIZE	DESCRIPTION
1	1	16"	ALTITUDE CONTROL VALVE, FL
2	2	16"	GATE VALVE, FL, W/CIRCULAR HAND WHEEL
3	1	12"	GATE VALVE, FL, W/CIRCULAR HAND WHEEL
4	2	12"	90° ELL, LONG RADIUS, FL
5	2	16" x 12"	REDUCING TEE, FL
6	1	18" x 16"	CONCENTRIC REDUCER, M.J. x P.E.
7	1	16"	FLANGED COUPLING ADAPTER
8	1	12"	FLANGED COUPLING ADAPTER
9	2	16"	WALL PIPE W/WATER STOP, M.J. x FL
10	1	16"	SPOOL PIECE, FL x P.E., LENGTH BY CONT'R
11	2	12"	SPOOL PIECE, FL x FL, LENGTH BY CONT'R
12	1	12"	SPOOL PIECE, FL x P.E., LENGTH BY CONT'R
13	2	1/4"	PRESSURE GAGE ASS'Y (SEE DETAIL, THIS DWG)
14	1	1/2"	BRASS SHUT-OFF VALVE
15	1	12" x 4"	REDUCING TEE, FL
16	1	4"	AIR-VAC VALVE ASS'Y (SEE DETAIL, THIS DWG)
17	1	1"	BALL VALVE W/HANDLE, SEE NOTE 2
18	1	4"	SPOOL PIECE, FL x FL, LENGTH = 12"



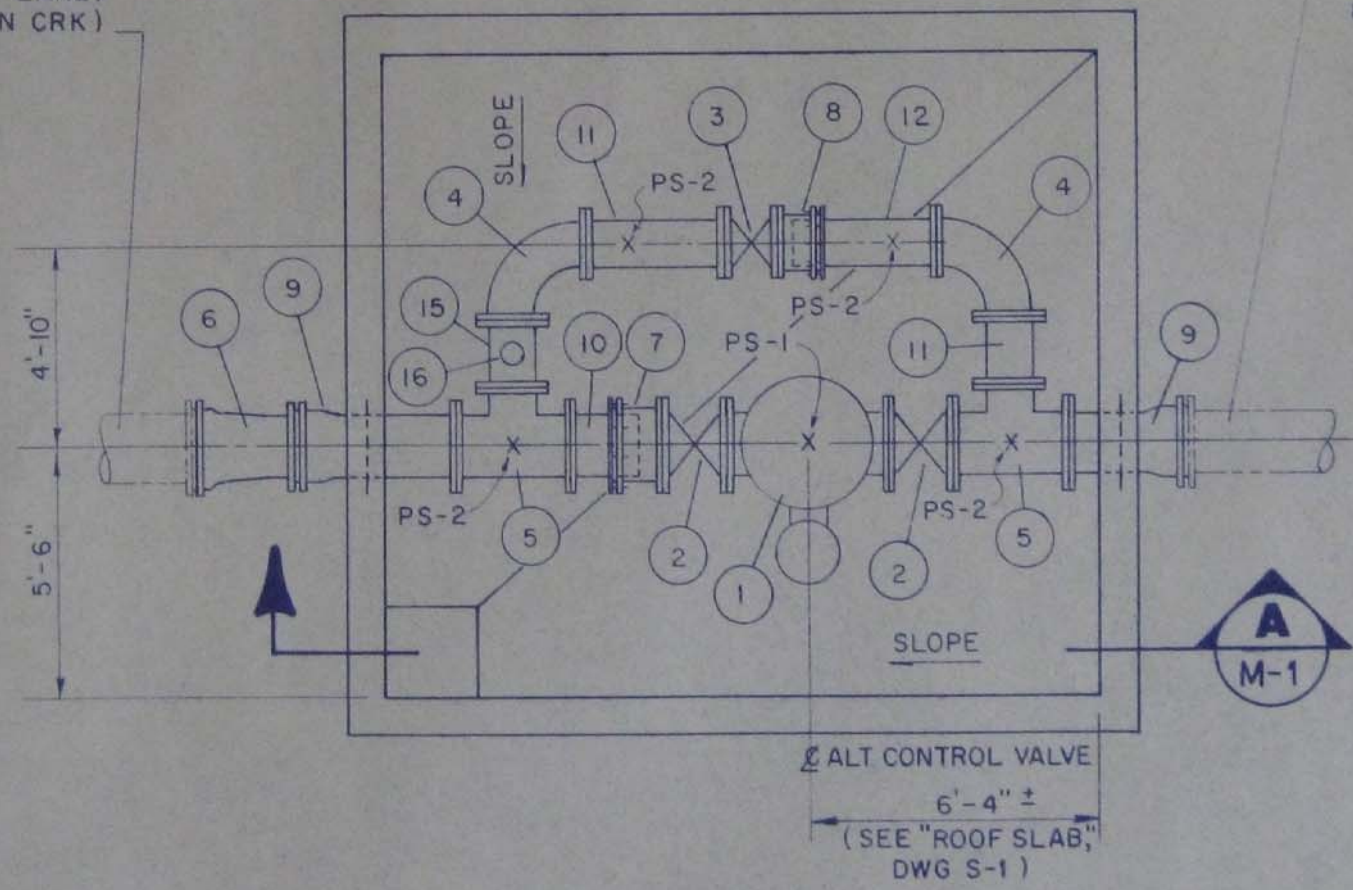


**SECTION**

**A**

18" D.I.P.,  
SEE DWG C-3 (AUKE LAKE)  
& DWG C-8 (LEMON CRK)

16" D.I.P.,  
SEE DWG C-3 (AUKE LAKE)  
& DWG C-8 (LEMON CRK)



# PIPING PLAN