

NOTES

1. SEE SPECIAL & TECHNICAL SPECIFICATIONS
FOR SCOPE OF WORK.

REMOVE STEEL TEST PANEL
AND HEAVED CONCRETE AND
POUR NEW SLAB. (3+50 - 3+80)

OVERLAY GRATE AND RAIL
TEST PANELS. (3+80 - 4+30)

FROM STA 0+10 TO STA 7+25 APPLY A 1"
LAYER OF ANVIL TOP 200-I TO THE LEFT
HALF OF THE FLUME FLOOR

CONSTRUCT $4\frac{1}{2}$ FOOT WIDE HORIZONTAL SURFACE
FROM STA 1+25 TO 7+25 LEFT AND FROM
STA 7+50 TO STA 9+00 RIGHT

E.O.P.

GOLD CREEK FLUME REPAIR

CITY AND BOROUGH OF JUNEAU
ENGINEERING DIVISION
155 SOUTH SEWARD STREET
JUNEAU, ALASKA 99801

DWN JEB / TMS
DATE 2-22-83

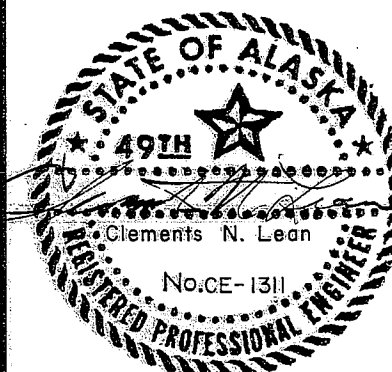
CHK S. STROUT
DATE

APP DATE

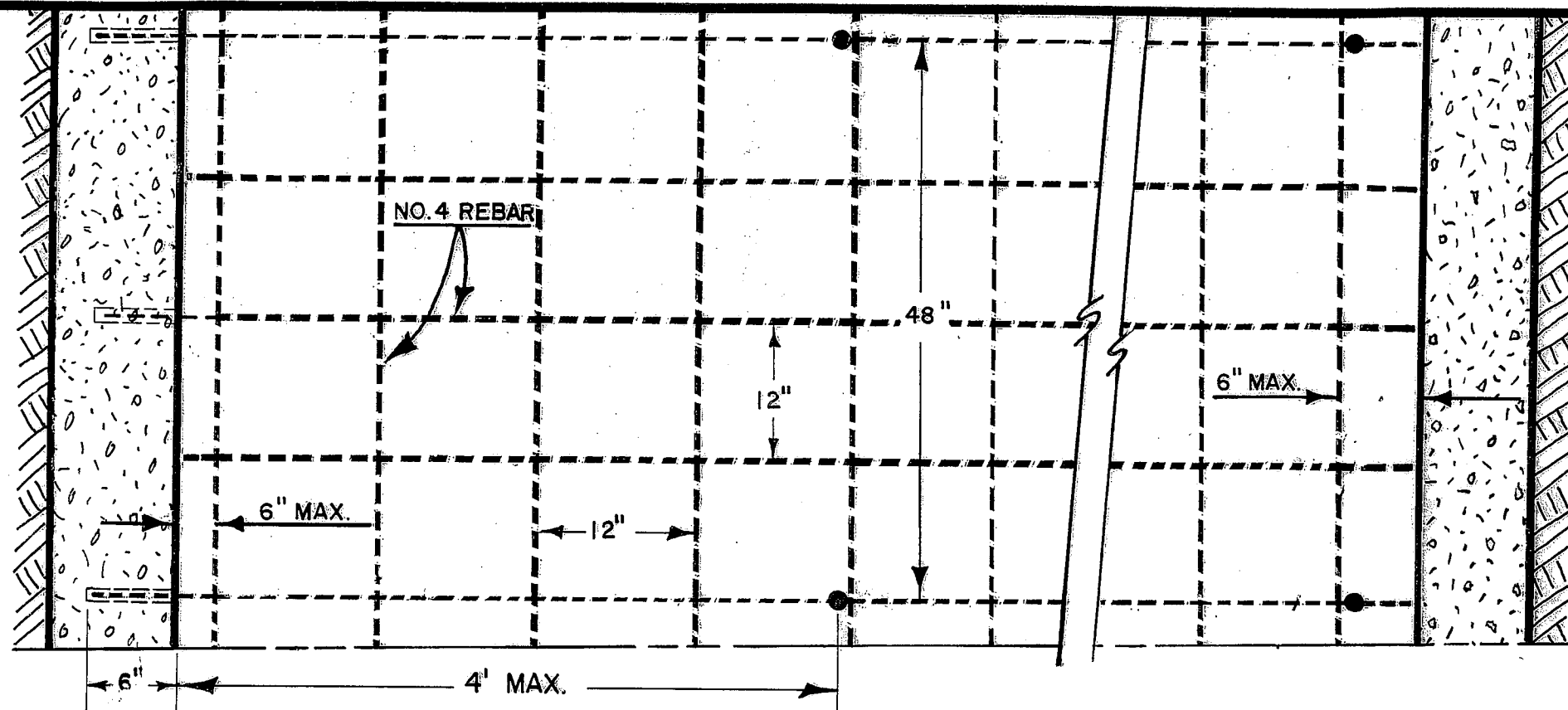
SCALE

N.T.S.

SHEET 1 OF 2

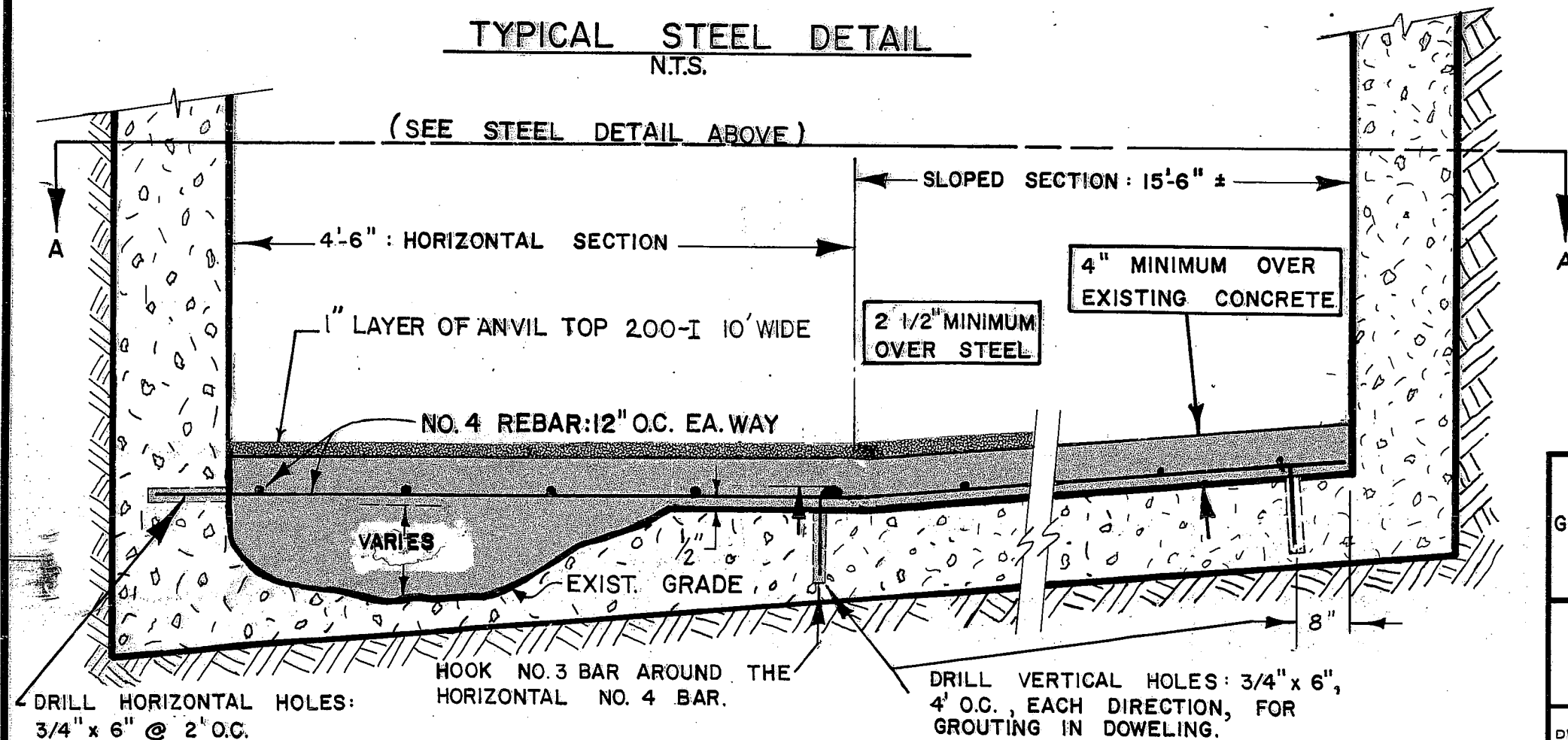


1671



TYPICAL STEEL DETAIL
N.T.S.

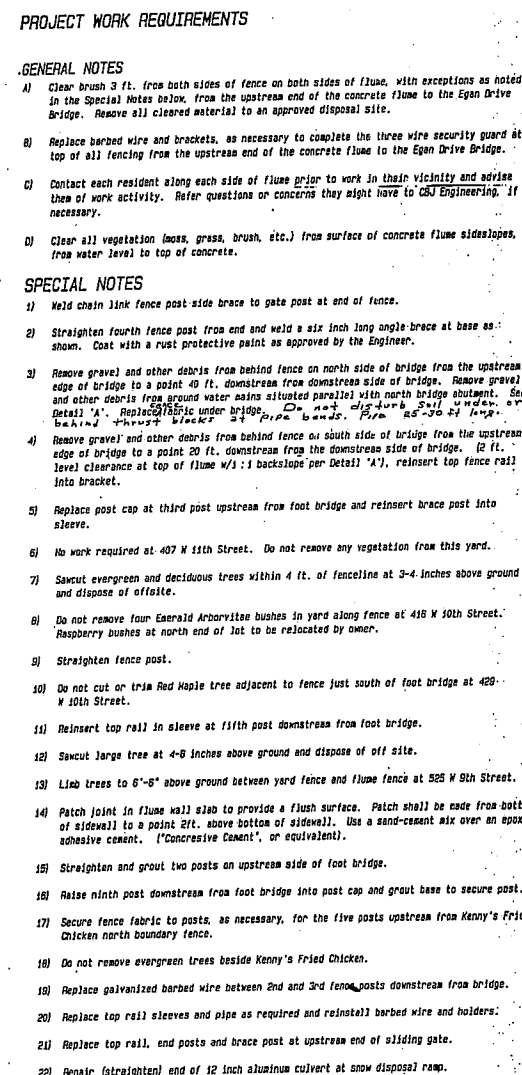
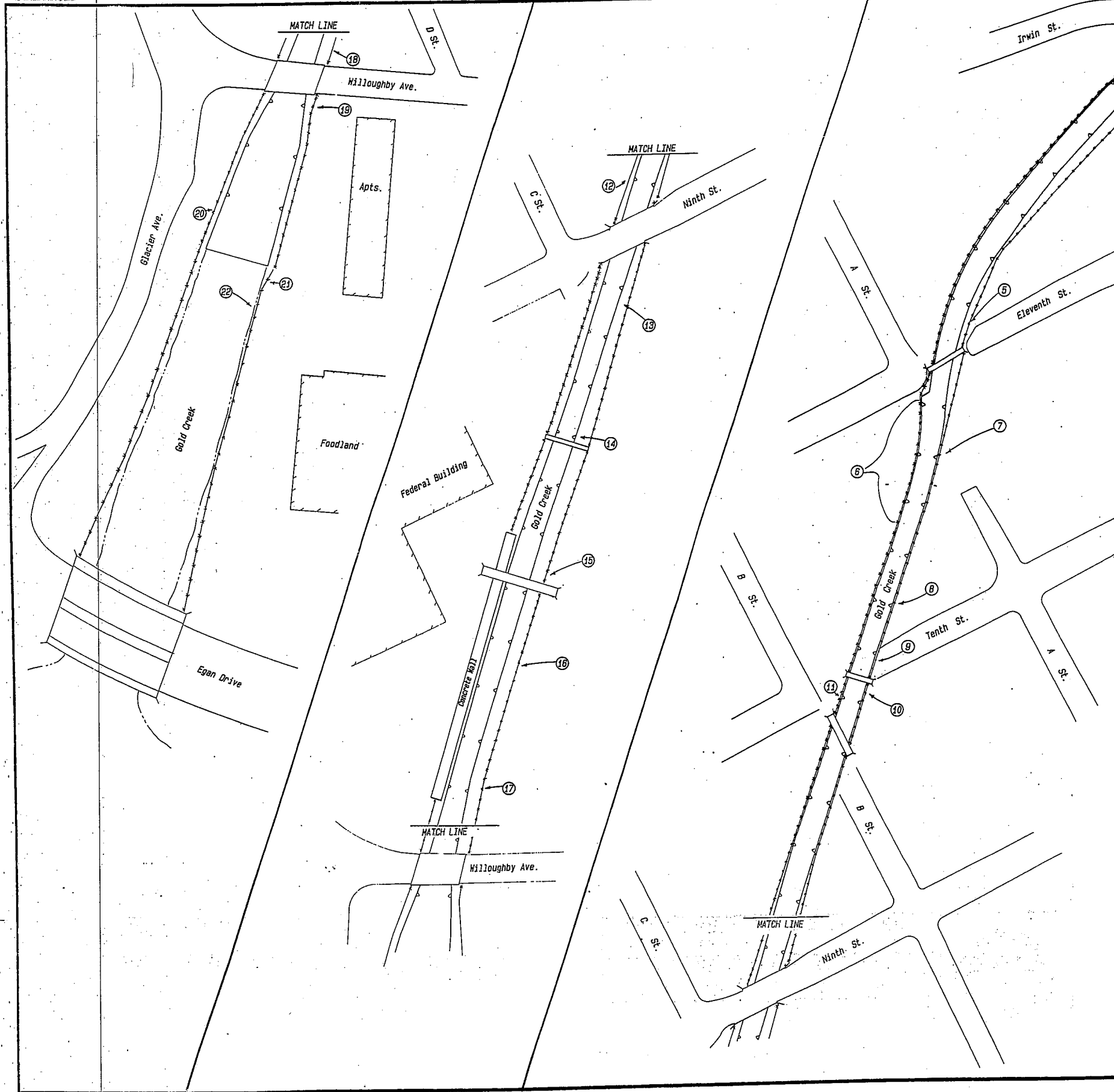
- NOTES -
- 1.) DOWELS SHALL BE GROUTED 4' O.C., IN THE FLUME FLOOR, EACH DIRECTION AND 2' O.C. IN THE FLUME WALL.
 - 2.) DOWELING IN THE FLUME WALL AND FLOOR MAY BE ACHIEVED BY EXTENDING OR BENDING THE NO. 4 REBAR INTO THE DOWEL HOLE IN LIEU OF USING HOOKED NO. 3 BAR DOWELS.



TYPICAL ELEVATION (STA. 2+50)
N.T.S.

GOLD CREEK FLUME REPAIR		
CITY AND BOROUGH OF JUNEAU ENGINEERING DIVISION 155 SOUTH SEWARD STREET JUNEAU, ALASKA 99801		
DWN. TMS DATE 2-22-83	CHK. S. STROUT DATE	
APP. DATE	SCALE N.T.S.	

SHEET 2 OF 2



FLUME, FENCING, CLEARING
AND OTHER REHABILITATION WORK