



ADDENDUM TO THE CONTRACT

for the

Capital City Fire and Rescue (CCFR) Sectional Doors and Operators Replacement

Contract No. E10-219

ADDENDUM NO.: THREE

CURRENT DEADLINE FOR BIDS:
May 4, 2010

PREVIOUS ADDENDA: TWO

ISSUED BY: City and Borough of Juneau
ENGINEERING DEPARTMENT
155 South Seward Street
Juneau, Alaska 99801

DATE ADDENDUM ISSUED: April 21, 2010

The following items of the contract are modified as herein indicated. All other items remain the same. This is a faxed addendum. A confirming copy will not be mailed to you. If this fax is incomplete, please call (907) 586-0490, and we will re-send it. This addendum has been issued and is posted online. Please refer to the CBJ Engineering Contracts Division webpage at:
<http://www.juneau.org/engineering ftp/contracts/Contracts.php>

PROJECT MANUAL:

Item No. 1: SECTION 00030 – Notice Inviting Bids and SECTION 00500 Agreement, Article 1. WORK

ADD: To Description of Work:

Hagevig Fire Training Center

Furnish and install the following at two (2), existing 14'-0" high x 12'-0" wide rolling canister-type doors:

Two (2) H-50-11 LiftMaster brand (or approved equal) operators for rolling steel doors, 110 Volt, single phase, with chain hoist option and steel hood mounted brackets. Install weather-proof (NEMA-4) 3-button switches and pneumatic sensing-edge device option at bottom edge of both existing doors. Electrical work includes conduit installation and relocation as required, installation of two new 25 Ampere, single pole breakers and wiring to existing electrical Panel 'A'.

Item No. 2: SECTION 00310 Bid Schedule **Delete** and **replace** with the attached Bid Schedule, labeled Addendum No. 3

Item No. 3: Clarifications: EXISTING DOOR AND OPERATOR COMPONENTS TO REMAIN

Existing door springs, torsion bars, center couplers and door rails to remain all locations except where their replacement is specified in the Scope of Work and drawings.

Complete torsion bar assemblies, springs, and rails are required at the Auke Bay and Lynn Canal fire stations where existing doors and operators will be replaced with new.

Item No 4: SECTION 01010 – SUMMARY OF WORK

Douglas Fire Station

Delete: "Install replacement 8'-8" torsion bar and center couplers at each existing door."

ADD: Replace existing 8'-0" torsion bars with new 8'-8" long solid steel-shaft torsion bars and center couplers at each door.

Glacier Fire Station

ADD: Provide and install twelve (12) Auxiliary Trolley Modification assemblies to provide drawbar-type operation as applicable to conversion to jackshaft type operators at this station only.

Basis of design: Chamberlain LiftMaster Professional –Auxiliary Trolley Modification or approved equal. See manufacturer's cutsheet, attached.

Delete: "Remove thirteen (13) existing 230v 3-phase, ¾ HP trolley-style operators and install new ¾ HP, 115v single phase jackshaft style with chain hoist and integrated wireless remote control with external antenna."

ADD: Remove twelve (12) existing 230v 3-phase ¾ HP trolley-style operators and install new ¾ HP, 115v single phase jackshaft style with chain hoist and integrated wireless remote control with external antenna at each door EXCEPT for door number 5. Existing trolley-style operator and sensing eye to remain at this door only. Scope of work at door number 5 still includes replacement of perimeter seals, door bottom astragal, and door balancing.

Delete: "Replace all existing 7' torsion bars with new 8' torsion bars on the operator side of each door."

ADD: Replace all existing 7' torsion bars with new 8'-8" long solid steel shaft torsion bars on the operator side of each door.

ADD: Hagevig Fire Training Center

Furnish and install the following at two (2), existing 14'-0" high x 12'-0" wide rolling canister-type doors:

Two (2) H-50-11 LiftMaster brand (or approved equal) operators for rolling steel doors, 110 Volt, single phase, with chain hoist option and steel hood mounted brackets. Install weather-proof (NEMA-4) 3-button switches and pneumatic sensing-edge device option at bottom edge of both existing doors. Electrical work includes conduit installation and relocation as required, installation of two new 25 Ampere, single pole breakers and wiring to existing electrical Panel 'A'.

Item No. 5: PLAN DRAWINGS

ADD: Hagevig Fire Training Center- Plan drawing, attached to this Addendum.

Auke Bay Fire Station:

Delete: All references to existing electrical panel 'B'.

ADD: All door operators connect to existing electrical panel 'Y' located in the utility room located adjacent to vehicle bay for door No. 5

Douglas Fire Station:

Delete: "Install replacement 8'-8" torsion bar and center couplers at each existing door.

ADD: Replace existing 8'-0" torsion bars with new 8'-8" long solid steel shaft torsion bars and center couplers at each door.

Delete: 24 Ampere single-pole circuit breaker in electrical Scope.

ADD: 25 Ampere single-pole circuit breaker in electrical Scope.

Glacier Fire Station:

Delete: "Existing Panel D1" text on building plan and electrical scope paragraph."

ADD: Existing Panel D2 on building plan and in electrical scope paragraph.

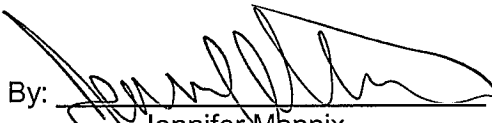
Delete: "Demo thirteen (13) existing 230v 3-phase, $\frac{3}{4}$ HP trolley-style operators and install new $\frac{3}{4}$ HP, 115v single phase jackshaft style with chain hoist and integrated wireless remote control with external antenna."

ADD: "Remove twelve (12) existing 230v 3-phase $\frac{3}{4}$ HP trolley-style operators and install new $\frac{3}{4}$ HP, 115v single phase jackshaft style with chain hoist and integrated wireless remote control with external antenna at each door EXCEPT for door number 5. Existing trolley-style operator and sensing eye to remain at this door only. Scope of work at door number 5 still includes replacement of perimeter seals, door bottom astragal, and door balancing.

Lynn Canal Fire Station:

Delete: Existing electrical Panel 'B' in plan view and existing door schedule.

ADD: Existing electrical panel 'A' is located in the NW corner of vehicle bay directly opposite vehicle door number 2 in the plan view. Note: The small restroom in plan does not exist.

By: 
Jennifer Mannix,
Contract Administrator
Date: 4/21/10

Total number of pages contained within this Addendum: 8

SECTION 00310 - BID SCHEDULE

Bid Schedule for construction of **E10-219 CCFR-SECTIONAL DOORS AND OPERATORS REPLACEMENT**, in accordance with the Contract Documents.

TOTAL BID - Furnish all labor, equipment and materials for replacement of sectional doors and operators at the Douglas, Juneau, Glacier, Auke Bay, and Lynn Canal fire stations and at the Hagevig Fire Training Center, as described in the Contract Documents.

TOTAL BASE BID \$ _____
(Price in Figures)

Date: _____ **Bidder:** _____
(Company Name)

END OF SECTION

ADDENDUM #3
4-20-10

GLACIER FIRE STATION
QTY = 12 REQ'd.



AUXILIARY TROLLEY MODIFICATION
(For Use With Models: J, H and GH)
65-9207 and 65-92071

APPLICATION REQUIREMENTS:

This modification is available to model J, H and GH operators. For 1/2 H.P. and lower sidemount operators use #48 drive chain. For 3/4 H.P. and higher sidemount operators use #41 drive chain.

FUNCTIONS:

Provides drawbar type operation on standard lift doors where a sidemount operator is preferred over a draw bar operator.

PARTS LIST:

Unpack kit to verify the parts listed below are included. Refer to installation on following pages.

PART NUMBER	DESCRIPTION	QUANTITY
01-10310	MODEL "T" OWNERS MANUAL	1
10-10203	CURVED ARM	1
10-10204	DOOR BRACKET	1
12-11438	BEARING ASSEMBLY	2
15-48B14LXX	SPROCKET, 48B14 1" BORE	1
15-50B35LGH	SPROCKET, 50B35 1" BORE 1/4" KW (2) 5/16-18 SS	1
75-10170	SLIDER ASSEMBLY	1
75-10214	STRAIGHT ARM ASSEMBLY	1
75-11502	FRONT IDLER ASSEMBLY. #48 DRIVE CHAIN	SEE NOTE 1
75-11503	FRONT IDLER ASSEMBLY. #41 DRIVE CHAIN	SEE NOTE 2
75-10259	TRACK SPACER ASSEMBLY	SEE CHART
77-10200	HARDWARE BAG	1
80-16331	S-HOOK	SEE CHART
86-RP08-108	ROLL PIN, 1/4" X 1-1/2" LONG	1

VARIABLE PARTS

PART NO.	DESCRIPTION	DOORS TO 12'	DOORS TO 14'	DOORS TO 16'	DOORS TO 18'	DOORS TO 20'	DOORS TO 22'	DOORS TO 24'	DOORS TO 26'
75-10259	TRACK SPACER ASSEMBLY	0	0	2	2	2	4	4	6
80-16331	S-HOOK	0	0	2	2	2	2	2	2

NOTES:

1. Shipped with 1/2 H.P. and lower sidemount operators.
2. Shipped with 3/4 H.P. and higher sidemount operators.

INSTALLATION INSTRUCTIONS

NOTE: Use the Model "T" owners manual for trolley installation, where appropriate, with the following exceptions:

1. TRACK ASSEMBLY:

- a. Assemble the track by installing the track spacers.
- b. Determine which side of the door the operator will be mounted. Install the idler assembly at the header end of the track with the coupler sprocket toward where the operator will be installed.
- c. Install a track spacer in the idler assembly, this keeps the track properly spaced.
- d. Slide the slider assembly into the track with the take-up bolt towards the open end.
- e. At the open track install the idler assembly that is normally the front idler on a trolley operator.
- f. Install the chain, use the take-up bolt to adjust the chain tension to allow about 3" sag in the center (remove links if necessary).
- g. Install the track and brace appropriately.

2. INSTALL THE OPERATOR:

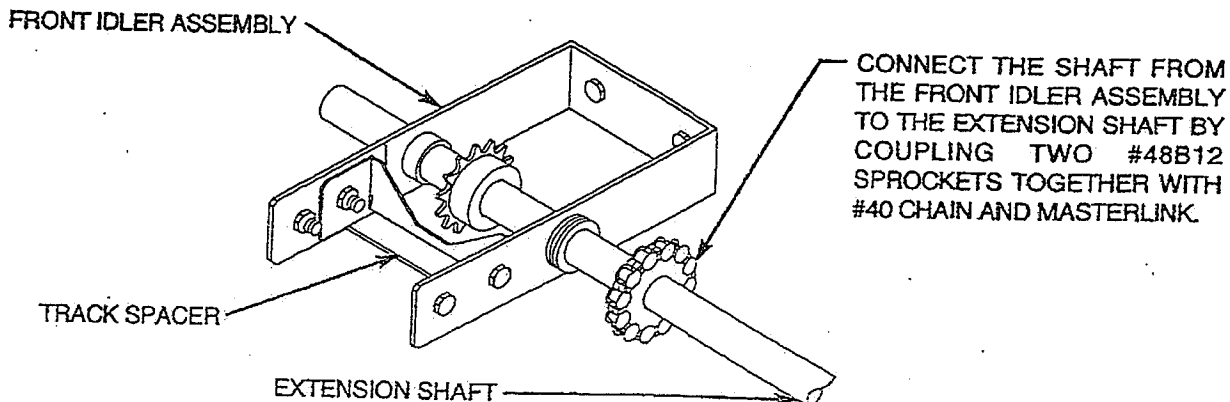
- a. Install the operator using the appropriate installation manual.
- b. Remove the 50B12 output sprocket from the operator and install the new 50B35 sprocket on the operator. The 50B12 sprocket will be installed on the extension shaft.

3. INSTALL EXTENSION SHAFT:

- a. Determine the length of the extension shaft to be used and cut it to this length. Install the 48B14 sprocket provided on the end of the shaft by drilling a 1/4" hole through the sprocket and shaft and pinning with the 1/4" by 1-1/2" roll pin provided. Be sure that the shaft does not extend past the end of the sprocket and that the teeth of the sprocket are at the end of the shaft (refer to figure 2).
- b. Couple the shaft to the front idler assembly by butting the two 14 tooth sprockets together and wrapping them with the #40 chain and master link (Refer to figure 1).
- c. Install the new bearing assemblies on the extension shaft. One of the bearings should be at the operator end of the shaft as close to the 50B12 sprocket as possible to prevent shaft flex. Install the second bearing at the mid point of the shaft. Be sure to properly pad out the bearings so that the shaft is parallel to the header.
- e. Install the 50B12 (from step 2) on the extension shaft, connect the chain between the operator and the shaft.
- f. Complete the operator installation with the proper operator manual.

NOTE: For additional help with any of the steps described above refer to the assembly drawing on page 3 of the instructions.

FIGURE 1



AUXILIARY TROLLEY MODIFICATION

NOTES:

1. Smaller Sprocket (50B12) is mounted on the Extension Shaft.
2. Larger Sprocket (50B35) is mounted to the operator where the (50B12) sprocket was removed.
3. Bearing Assembly should be mounted as close to the (50B12) sprocket as possible to prevent shaft flex.

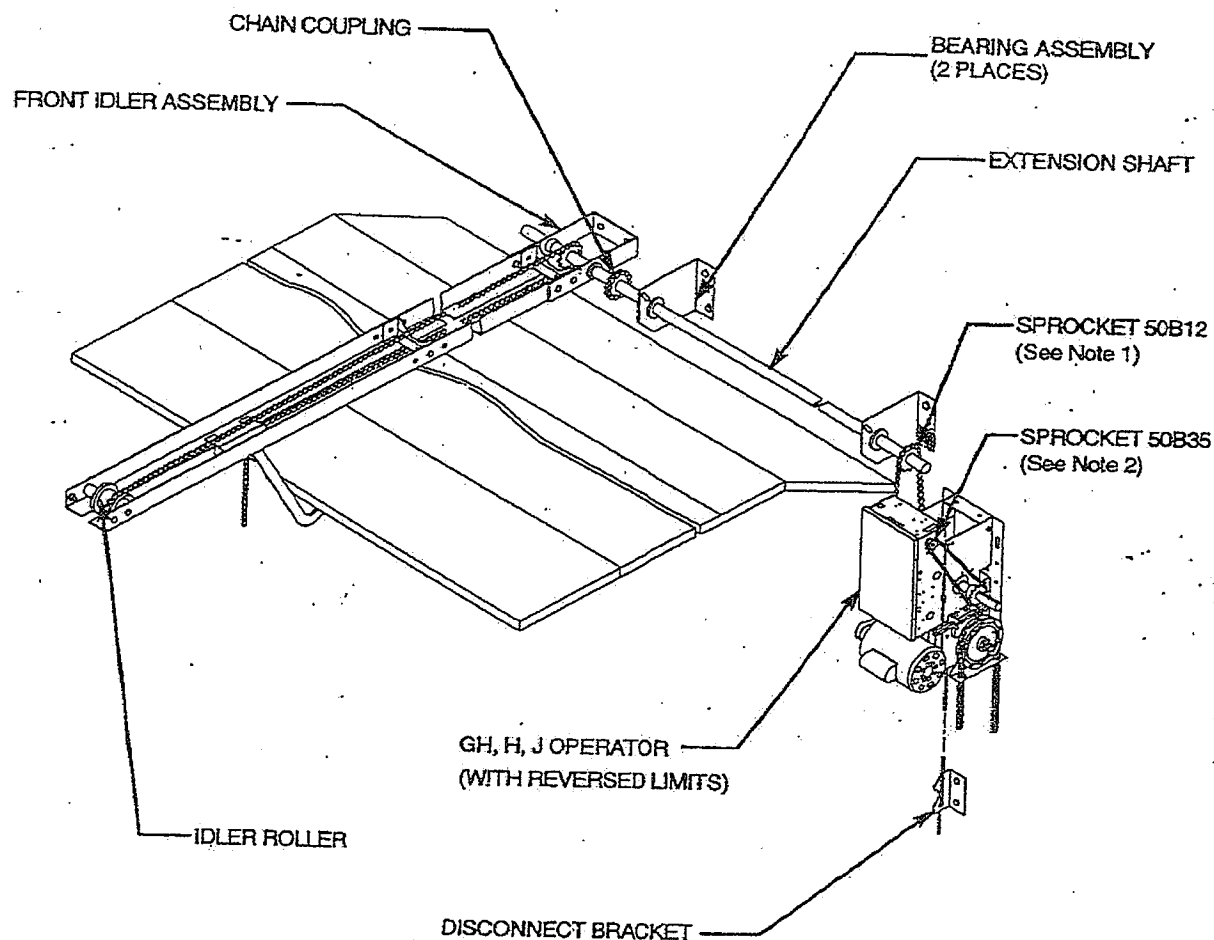
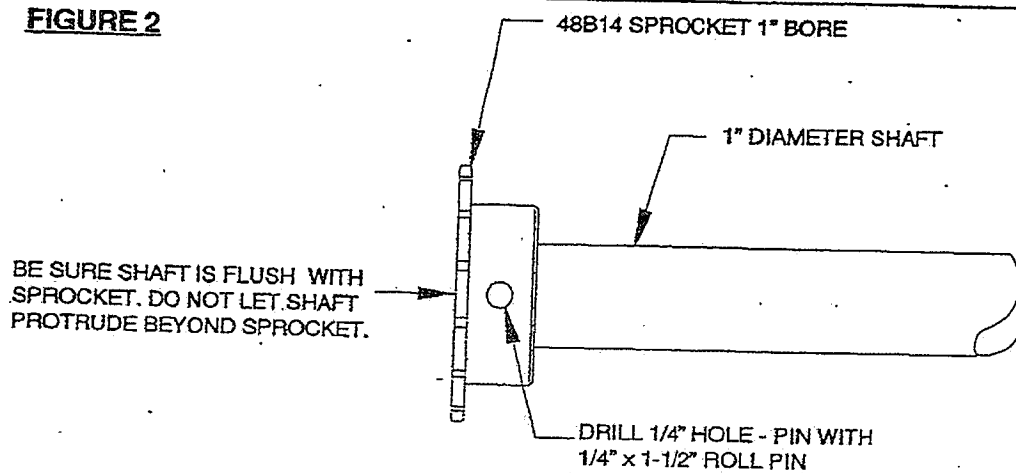


FIGURE 2



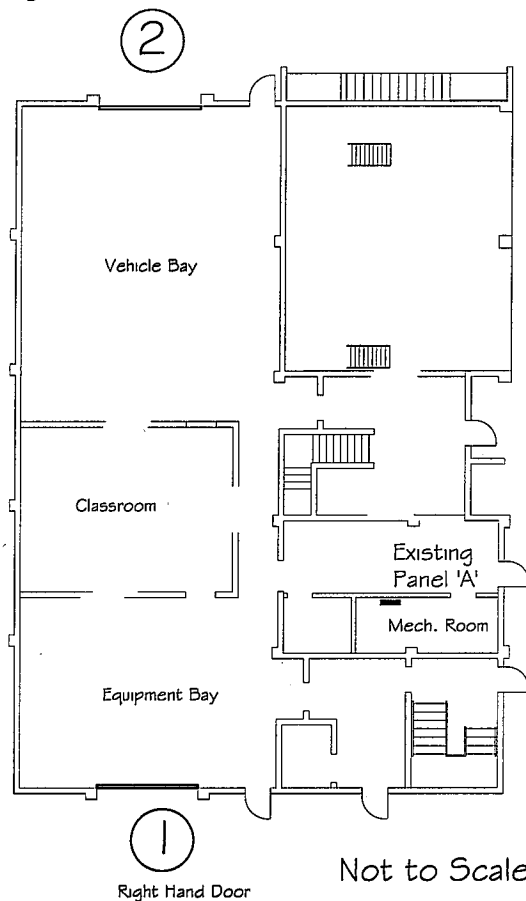
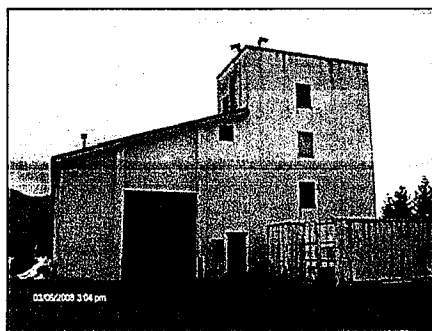
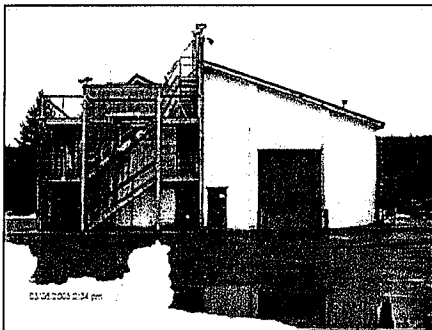
HAGEVIG FIRE TRAINING CENTER

Scope of Work:

Furnish and install the following at two (2), existing
14'-0" high x 12'-0" wide rolling cannister-type doors:

Two (2) H-50-11 LiftMaster brand (or approved equal) operators for rolling steel doors, 110 Volt, single phase with chain hoist option and steel hood mounted brackets. Install weather-proof (NEMA-4) 3-button switches and pneumatic sensing-edge device option at bottom edge of both existing doors. Electrical work includes conduit installation and relocation as required, installation of two new 25 Ampere, single pole breakers and wiring to existing electrical Panel 'A'.

Note: Contractor to field verify all existing dimensions and conditions. Plan is not to scale.



EXISTING DOORS
HAGEVIG FIRE TRAINING CENTER
2601 Sherwood Lane, Juneau AK

① ②	2	12' W X 14' H	Cannister Doors		Chain operated
-----	---	---------------	-----------------	--	----------------

Do not scale from this drawing, use dimensions

CBJ Fire Station Doors

(as of May 2009)

Addendum No. 3

April 21, 2010



-Architecture Division
CITY/BOROUGH OF JUNEAU

Alaska's Capital City