

Capital City Fire & Rescue
 AUKE BAY FIRE STATION - 11900 Glacier Hwy.
 Sectional Doors & Operators Replacement
 CBJ Contract No. E10-219

Scope of Work:
Doors 1,2,3,4 & 5

Install: Sectional Doors: Replace all doors, #'s 1,2,3,4 & 5 with Overhead Door Model-591 Polyurethane insulated with 3" wide track, double end styles., or approved equal. Provide thermal glazing windows horizontally in 3rd panel from bottom.

Door Operators: Replace all existing operators. Install new 'Trolley' type. 3/4 Hp, 115v, w/o chain hoist. Operators to have integral remote operating system with external antenna. Install weatherproof 3 button switches at each door.

Infra-red sensing eyes between each door. NEMA 4-weatherproof.

Door bottom astragal seals and perimeter weatherstripping
 Door rollers: 3" Long-stem

Electrical Scope New door operators are same voltage as existing. Install new conduit as required to operators, 3 button switches and infra-red sensing eyes. Provide five (5) new 25 Ampere, single-pole breakers at existing electrical panelboard to feed new door operators. Connect all door operators to existing panel 'B'.

Note: Contractor to field verify all existing dimensions & conditions.
Plan is not to scale.

EXISTING DOORS & OPERATORS
 Auke Bay Fire Station 11900 Glacier Hwy.

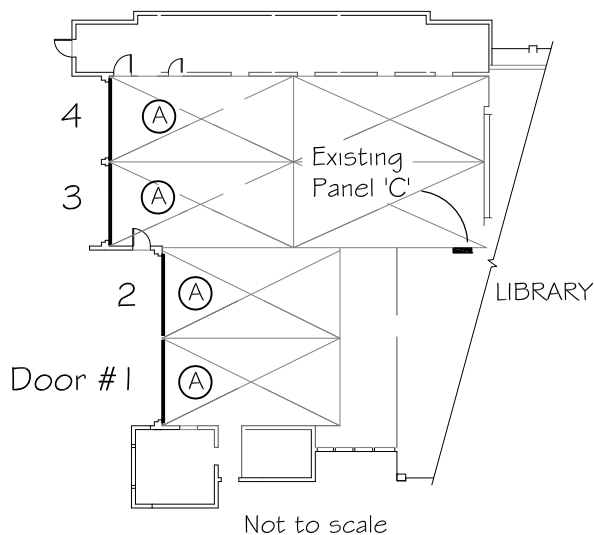
(H)	4	14' - 2" W X 12' - 1" H	Sectional Door	Model: Barcol LR electric w/ teletron radio switches & clutch @ operator	(2) 6" diameter springs ea., plus chain lifts	Electrical: From existing Panel 'B'
(I)	1	12' - 2" W X 12' - 1" H	Sectional Door	Model: Barcol LR electric w/ teletron radio switches & clutch @ operator	(2) 3" diameter springs ea., plus chain lifts	Electrical: From existing Panel 'B'

Do not scale from this drawing, use dimensions

CBJ Fire Station Doors

(as of May 2009)





Capital City Fire & Rescue
DOUGLAS FIRE STATION - 1016 3rd Street, Douglas AK
Sectional Doors & Operators Replacement
CBJ Contract No. E10-219

Scope of Work:
Doors 1-4

Install:

Door bottom astragal seals
Door rollers: 3" Long-stem
8'-8" torsion bar and center couplers at all doors
Infra-red sensing eyes, NEMA 4-weatherproof

Door Operators: Trolley type. 3/4 Hp, 115v, without chain hoist.
Integral remote operating system with external antenna.

Weatherproof 3-button switches at each door.

Electrical Scope:

Existing door operators to be replaced are wall mount.
New operators are overhead 'trolley' type. Provide 4 new
24 Ampere, single-pole circuit breakers in existing panel.
Install and route new conduit and wiring to operators, 3 button switches
and sensing eyes. Connect to existing electrical panelboard 'C'.

**Note: Contractor to field verify all existing dimensions & conditions.
Plan is not to scale.**

EXISTING DOORS & OPERATORS

Douglas Fire Station 1016 W. 3rd Street'

Key	QUANTITY	SIZE	TYPE	MODEL/COMPANY	NOTES	ELECTRICAL
(A)	4	13'W X 12'H	Sectional Door	Operator: Model FL/SFL 1/2 HP, Overhead Door Corporation, 591 Thermacore Series, commercial	(2) 3" diameter springs & chain cranks	From Existing Panel 'C'

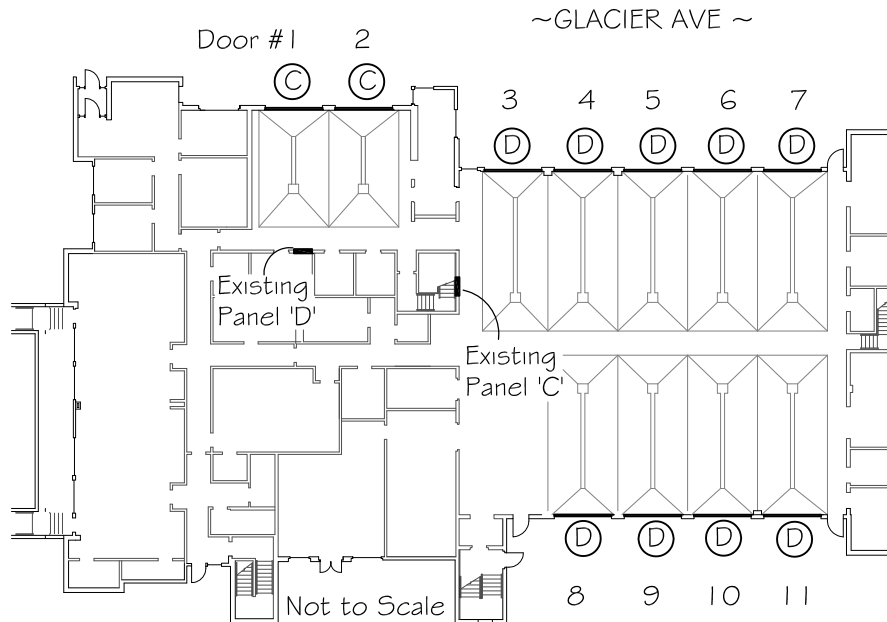
Do not scale from this drawing, use dimensions

CBJ Fire Station Doors

(as of May 2009)



-Architecture Division
CITY/BOROUGH OF JUNEAU Alaska's Capital City



Capital City Fire & Rescue
JUNEAU FIRE STATION - 820 Glacier Ave.
Sectional Doors & Operators Replacement
CBJ Contract No. E10-219

Scope of Work:
Doors 1-11

Install:

- Door bottom astragal seals and perimeter weatherstripping
- Door rollers: 3" long stem
- Install new door bottom panel at door #9 only
- Infra-red sensing eyes, NEMA 4-weatherproof

Door Operators: Replace operators at all existing doors.

- Trolley type. 3/4 Hp, 115v, w/o chain hoist.
- Integral remote operating system with external antenna.
- Weatherproof 3 button switches for each door.

Electrical Scope:

New door operators are same style and voltage as existing. Install new conduit as required to install operators, 3 button switches and infra-red sensing eyes. Provide eleven (11) new 25 Ampere, single-pole breakers in existing electrical panelboards to feed new door operators. Connect operators for doors 1 & 2 to existing panel 'D'. Connect operators for doors 3 through 11 to existing panel 'C'.

Note: Contractor to field verify all existing dimensions & conditions. Plan is not to scale.

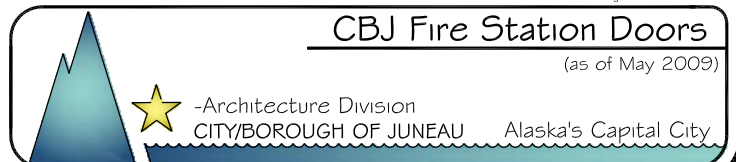
EXISTING DOORS & OPERATORS
Juneau Fire Station 820 Glacier Ave.

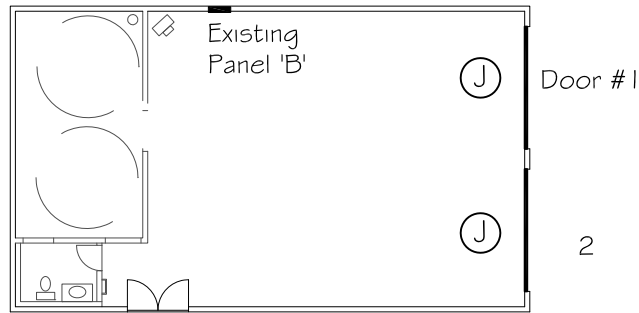
Ⓒ	2	12' W X 10' H	Sectional Door	Overhead electric operators, Model RCH 1/2 HP 115V	(2) 4" diameter springs ea., release on drag bar	Electrical: From existing Panel 'D'
Ⓓ	9	12' W X 14' H	Sectional Door	Overhead electric operators, Model RCH 1/2 HP 115V	(2) 8" diameter springs ea., release on drag bar	Electrical: From existing Panel 'C'

Do not scale from this drawing, use dimensions

CBJ Fire Station Doors

(as of May 2009)





Capital City Fire & Rescue
 LYNN CANAL FIRE STATION - 17900 Glacier Hwy.
 Sectional Doors & Operators Replacement
 CBJ Contract No. E10-219

Scope of Work: Doors 1 & 2

Install:

Sectional Doors: Replace both existing door assemblies with Overhead Brand Model-59 OR approved equal. Polyurethane insulated with 3" wide track, double end styles. Provide thermal glazing in 3rd panel from bottom of each door.

Door Operators: Replace all operators.
 Trolley type. 3/4 Hp, 115v, without chain hoist.
 Integral remote operating system with external antenna. Install weatherproof 3 button switches for each door.

Door bottom astragal seals and perimeter weatherstripping
 Door rollers: 3" Long-stem
 Infra-red sensing eyes, NEMA 4-weatherproof

Electrical Scope:

Existing operators are 208V - New operators are 115V. Modify electrical to accept new voltage as required. Provide two (2), 25 Ampere, single-pole breakers at existing electrical panelboard to feed new door operators. Install new conduit as required to operators, 3 button switches and infra-red sensing eyes. Connect operators to existing electrical panel 'B'.

Note: Contractor to field verify all existing dimensions & conditions. Plan is not to scale.

EXISTING DOORS & OPERATORS

Lynn Canal fire Station 17900 Glacier Hwy.

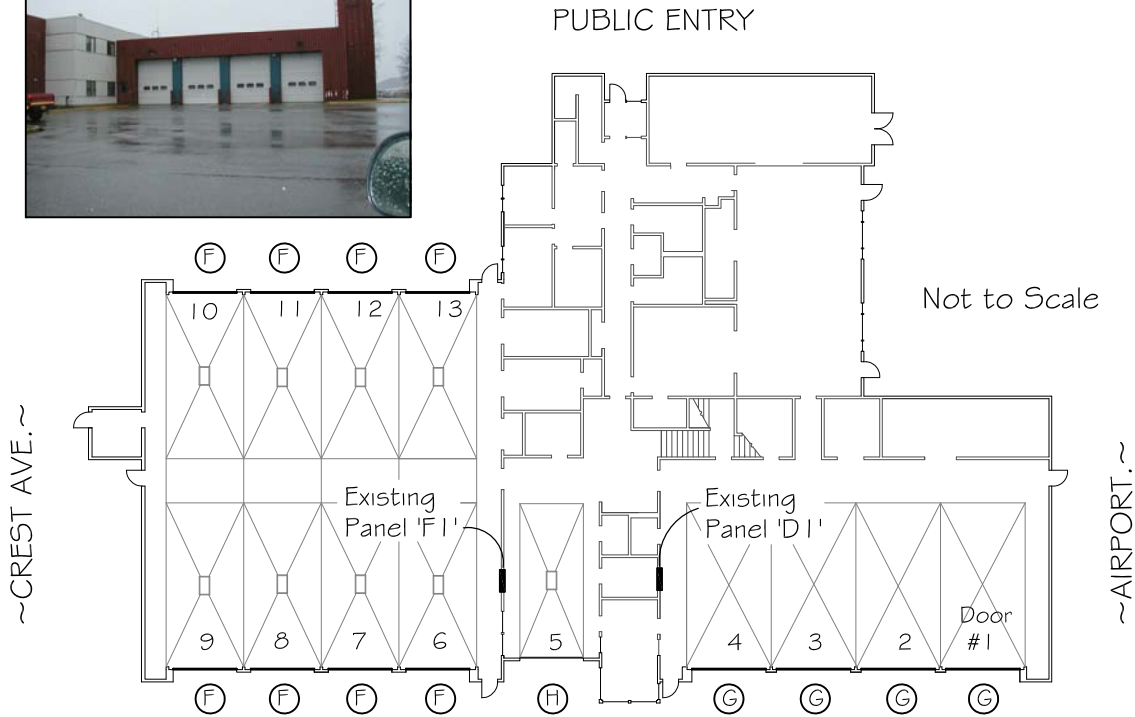
J	2	12' W X 12' H	Sectional Door	Model: Barcol MR, 1/2 HP 208 V, w/ teletron radio switches & clutch @ electric operator	(2) 3" diameter springs ea., no chain lifts	Electrical: From existing Panel 'B'
---	---	---------------	----------------	--	--	--

Do not scale from this drawing, use dimensions

CBJ Fire Station Doors

(as of May 2009)





Capital City Fire & Rescue
GLACIER FIRE STATION - 1700 Crest Ave.
Sectional Doors & Operators Replacement
CBJ Contract No. E10-219

Scope of Work: Doors 1 - 13

Install:

- Door bottom astragal seals and perimeter weatherstripping
- Door rollers: 3" Long stem
- Install 8' long torsion bars on operator side of each door.
- Infra-red sensing eyes, NEMA 4-weatherproof
- Door Operators: Demo 13 existing 'trolley' type operators and replace with 'Jackshaft' type. 3/4 Hp, 115v, with chain hoist emergency operation.
- Integral remote operating system with external antenna.
- Mount new operators on contractor supplied metal supports between each set of doors.
- Install weatherproof 3-button switches for each door

Electrical Scope:

- Convert electrical supply from existing 3-Ph. 230v power
- Install new conduit as required to operators, 3 button switches and infra-red sensing eyes. Provide thirteen (13) new 25 Ampere, single-pole breakers in existing electrical panelboards to feed new door operators. Connect operators at doors 5 through 13 to existing panel 'F1'. Connect operators at doors 1 through 4 to existing panel 'D1'.

Mechanical Scope:

- Re-route existing water piping as required to accomdate new operator installation.

**Note: Contractor to field verify all existing dimensions & conditions.
Plan is not to scale.**



EXISTING DOORS & OPERATORS
Glacier Fire Station 1700 Crest Ave.

(F)	8	12' W X 14' H	Sectional Door	Model AHD-14-42 3/4 HP 230V, 3 phase & chain lifts	(2) 6" diameter springs ea., w/ stanley electric operators	Electrical: From existing Panel 'F1'
(G)	4	14' W X 16' H	Sectional Door	Model AHD-14-42 3/4 HP 230V, 3 phase & chain lifts	(2) 6" diameter springs ea., w/ stanley electric operators	Electrical: From existing Panel 'D1'
(H)	1	10' W X 12' H	Sectional Door	Model AHD-14-42 3/4 HP 230V, 3 phase & chain lifts	(2) 6" diameter springs ea., w/ stanley electric operators	Electrical: From existing Panel 'F1'

Do not scale from this drawing, use dimensions

CBJ Fire Station Doors

(as of May 2009)

