



GLACIER VALLEY
ELEMENTARY SCHOOL

GLACIER VALLEY ELEMENTARY SCHOOL PLAYGROUND UPGRADES

HAIGHT & ASSOCIATES

ELECTRICAL ENGINEERS
526 MAIN STREET
JUNEAU, ALASKA 99801
TELE: (907) 586-9788

FOR THE CITY & BOROUGH OF JUNEAU
AND THE
JUNEAU SCHOOL DISTRICT
JUNEAU, AK

TABLE OF CONTENTS

G00- COVER SHEET
G01- EXISTING SITE PLAN
C01- DEMO PLAN
L01- LAYOUT PLAN
L02: ENLARGED TOT LOT PLAN
L03: ENLARGED MAIN PLAY AREA PLAN
L04: ENLARGED ENTRY PLAZA PLAN
L05: PLAYGROUND DETAILS
L06: FENCING DETAILS
A01: PLAY WALL ELEV & DETAILS
A02: PLAY WALL DETAILS
A03: PLAY AREA FENCING ENCLOSURE
E01: COVERED PLAY AREA ELECTRICAL

CITY & BOROUGH OF JUNEAU

ENGINEERING DEPT.
155 S SEWARD STREET
JUNEAU, ALASKA 99801
TELE: (907) 586-0800
FAX: (907) 463-2606

GLACIER VALLEY
ELEMENTARY SCHOOL
PLAYGROUND UPGRADES

CBJ CONTRACT NO. EIO-209
-Architecture Division
CITY/BOROUGH OF JUNEAU

Alaska's Capital City



Sheet Title:
COVER SHEET

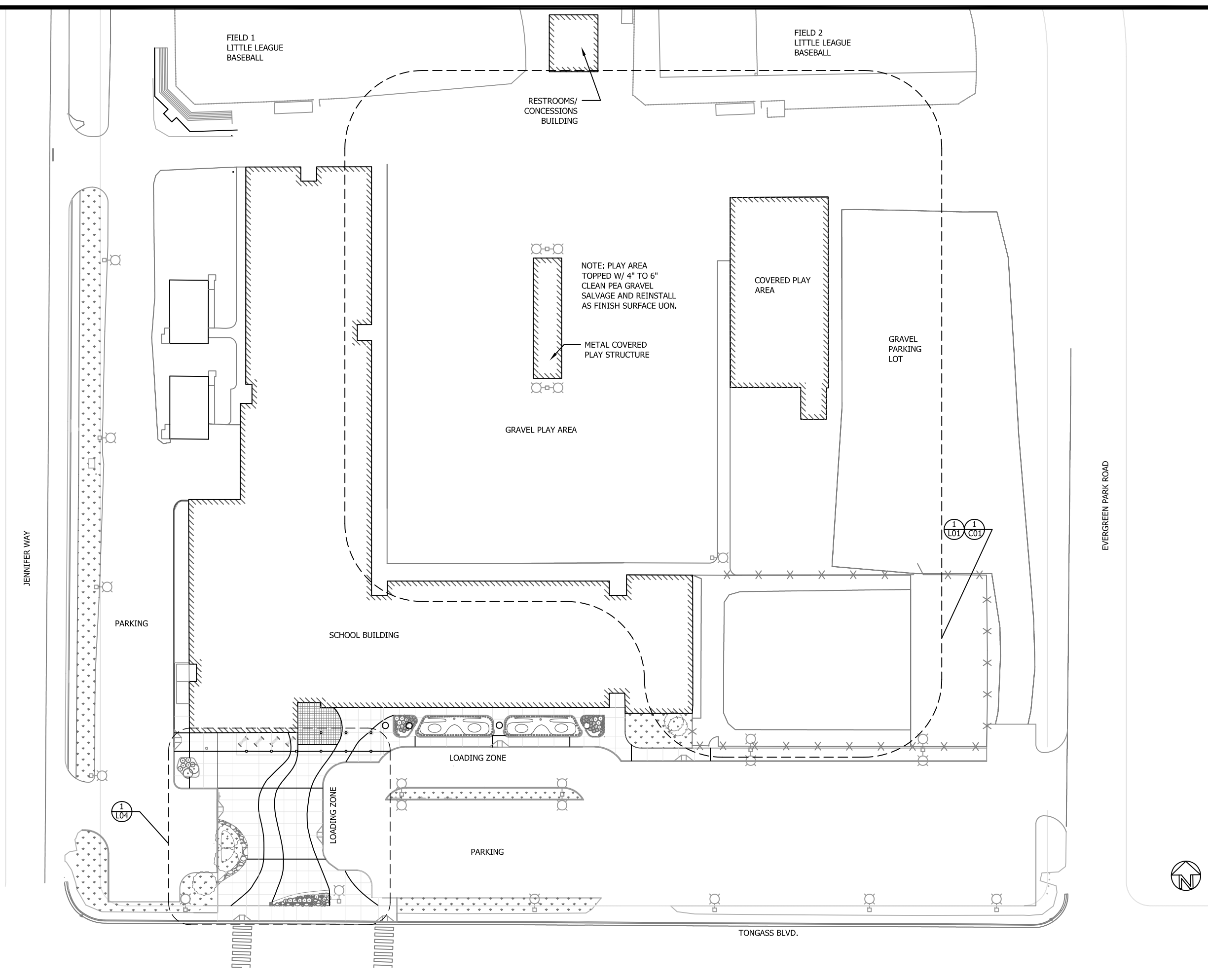
Project Manager: N. Coffee
Designed by: N. Coffee
Drafted By: S. Stekoll



Date:
MARCH 12, 2010

G00

Sheet number:
1 of 13



GLACIER VALLEY
ELEMENTARY SCHOOL
PLAYGROUND UPGRADES

CBJ CONTRACT NO. E10-209
-Architecture Division
CITY/BOROUGH OF JUNEAU Alaska's Capital City

Sheet Title:
EXISTING SITE PLAN

Project Manager: N. Coffee
Designed by: N. Coffee
Drafted By: S. Stekoll



Scale: 1"=60'

0 30 60

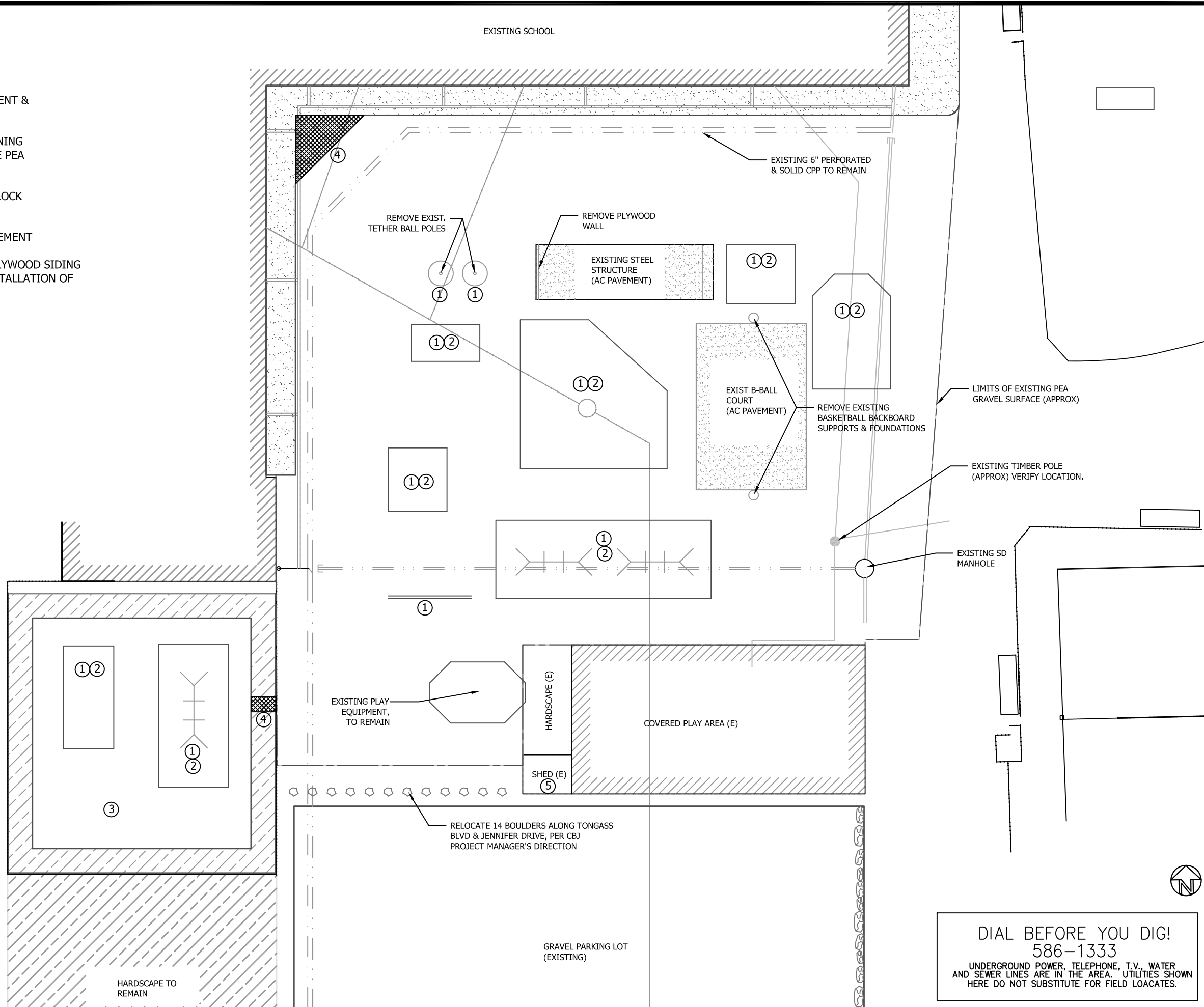
Date:
MARCH 12, 2010

G01

Sheet number:
2 of 13

NOTES:

1. REMOVE PLAY EQUIPMENT & FOUNDATIONS
2. REMOVE WOOD RETAINING BORDERS & STOCKPILE PEA GRAVEL FOR RE-USE
3. STOCK PILE WASHED ROCK FOR REUSE
4. REMOVE ASPHALT PAVEMENT
5. REMOVE & SALVAGE PLYWOOD SIDING AS REQUIRED FOR INSTALLATION OF ZEE FLASHING



**GLACIER VALLEY
ELEMENTARY SCHOOL
PLAYGROUND UPGRADES**

CBJ CONTRACT NO. E10-209
-Architecture Division
CITY/BOROUGH OF JUNEAU Alaska's Capital City

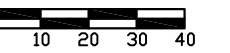


Sheet Title:
DEMO PLAN

Project Manager: N. Coffee
Designed by: N. Coffee
Drafted By: S. Stekol



Scale: 1"=40'



Date:
MARCH 12, 2010

C01

Sheet number:
3 of 13

DIAL BEFORE YOU DIG!
586-1333

UNDERGROUND POWER, TELEPHONE, T.V., WATER
AND SEWER LINES ARE IN THE AREA. UTILITIES SHOWN
HERE DO NOT SUBSTITUTE FOR FIELD LOCATES.

1. INSTALL NEW SWINGS. PROVIDE 12" DEEP PEA GRAVEL TO LIMITS OF FALL ZONE FLUSH WITH ADJACENT FINISH GRADE.
2. ASPHALT PAVEMENT OVER EXISTING ASPHALT BASKETBALL COURT. PAINT KEYS & MIDCOURT LINE & CIRCLE.
3. BASKETBALL POST, BACKBOARD, HOOP & NET.
4. CHAIN LINK FENCE & GATES, SEE L06 FOR DETAILS.
5. DISTRIBUTE EXCESS PEA GRAVEL OVER TOT LOT AND OPEN PLAY AREAS TO PROVIDE UNIFORM DEPTH AND GRADE.
6. PAINT COVERED PLAY AREA WOOD SURFACES. PAINT EXTERIOR FACE AND LOWEST 3' OF INTERIOR FACE BLUE TO MATCH SCHOOL. PAINT UPPER PORTION OF INTERIOR TO MATCH EXISTING CREAM COLOR.
7. PAINT PLYWOOD WALLS BLUE TO MATCH SCHOOL.
8. INSTALL 3/4" ZEE FLASHING ABOVE BOTTOM COURSE OF PLYWOOD & REINSTALL PLYWOOD ABOVE.
9. CAUTION: UNDERGROUND ELECTRICAL SERVING SITE LIGHTING-VERIFY ACTUAL LOCATION.
10. TYPE III CATCH BASIN, PER CBJ STANDARD DETAILS. SIDEWALK GRATE SHALL BE EAST JORDAN IRON WORKS, INC. NO. 7700 CATCH BASIN INLET WITH TYPE M4 ADA GRATE OR APPROVED EQUAL.



CDJ CONTRACT NO.: L10-200
-Architecture Division
CITYBOROUGH OF JUNEAU Alaska's Capital City

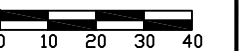


LAYOUT PLAN

Project Manager: N. Coffee
Designed by: N. Coffee
Drafted By: S. Stekoll



Scale: 1"=40'



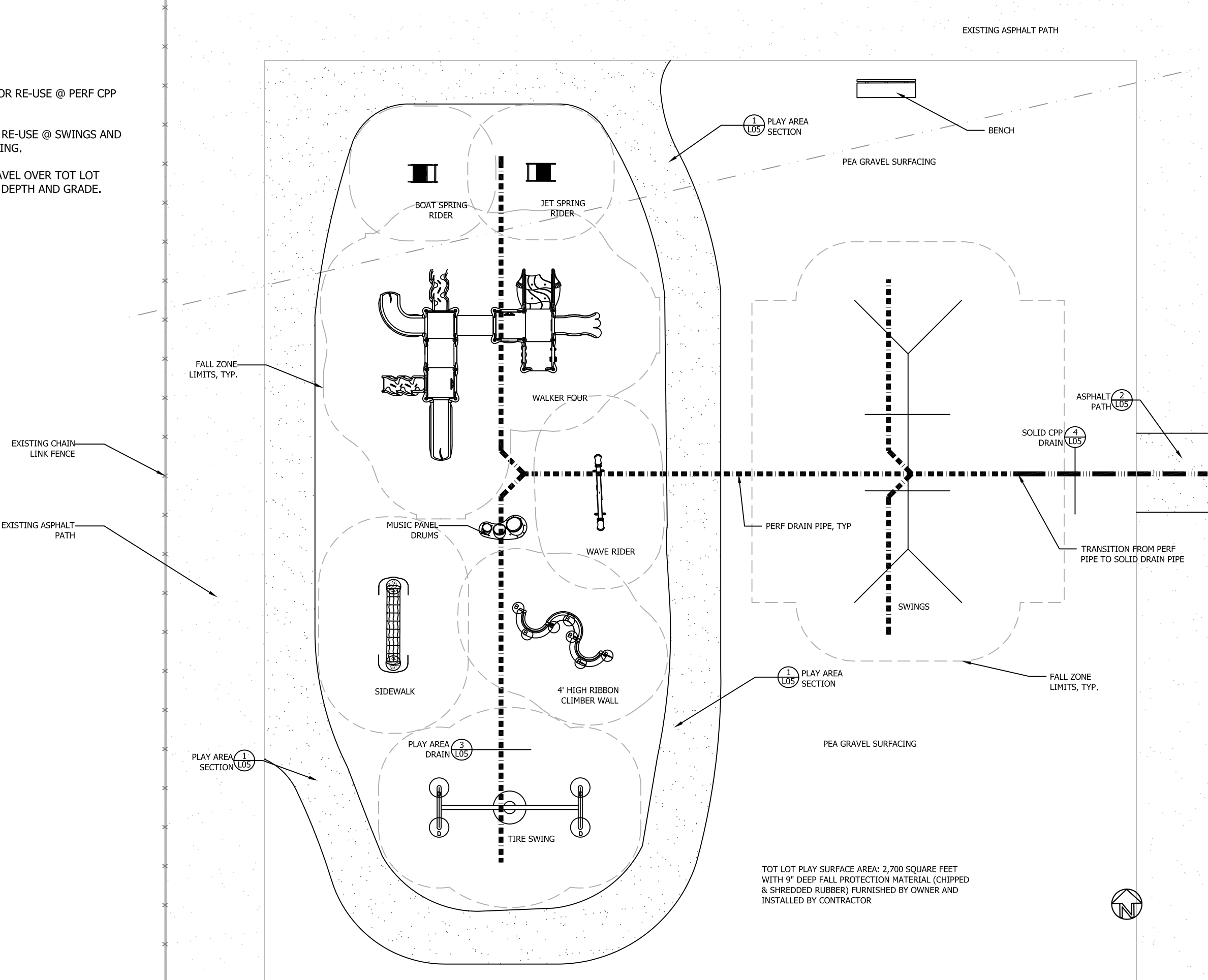
Date:
MARCH 12, 2010

L01

Sheet number:
4 of 13

NOTES:

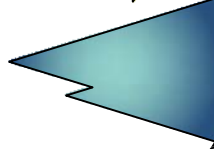
- 1. STOCKPILE WASHED ROCK FOR RE-USE @ PERF CPP DRAINS.
- 2. STOCKPILE PEA GRAVEL FOR RE-USE @ SWINGS AND GENERAL PLAY AREA SURFACING.
- 3. DISTRIBUTE EXCESS PEA GRAVEL OVER TOT LOT AREA TO PROVIDE UNIFORM DEPTH AND GRADE.



GLACIER VALLEY
ELEMENTARY SCHOOL
PLAYGROUND UPGRADES

CBJ CONTRACT NO. E10-209

Architecture Division
CITY/BOROUGH OF JUNEAU Alaska's Capital City



Sheet Title:

ENLARGED TOT LOT PLAN

Project Manager: N. Coffee
Designed by: N. Coffee
Drafted By: S. Stekoll



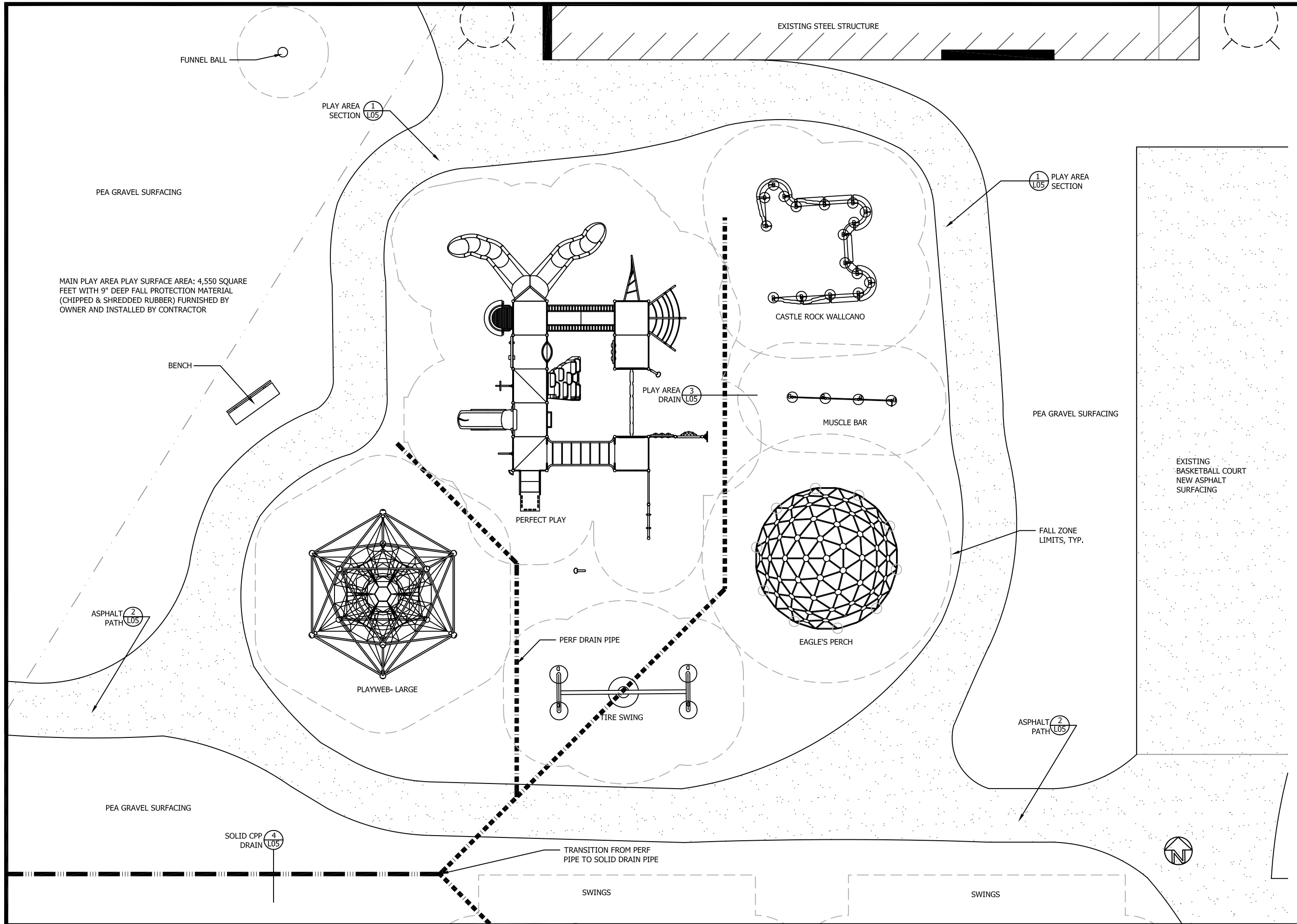
Scale: 1"=10'



Date:
MARCH 12, 2010

L02

Sheet number:
5 of 13



GLACIER VALLEY
ELEMENTARY SCHOOL
PLAYGROUND UPGRADES

CBJ CONTRACT NO. E10-209
-Architecture Division
CITY/BOROUGH OF JUNEAU Alaska's Capital City

Sheet Title:
ENLARGED MAIN PLAY
AREA PLAN

Project Manager: N. Coffee
Designed by: N. Coffee
Drafted By: S. Stekoll



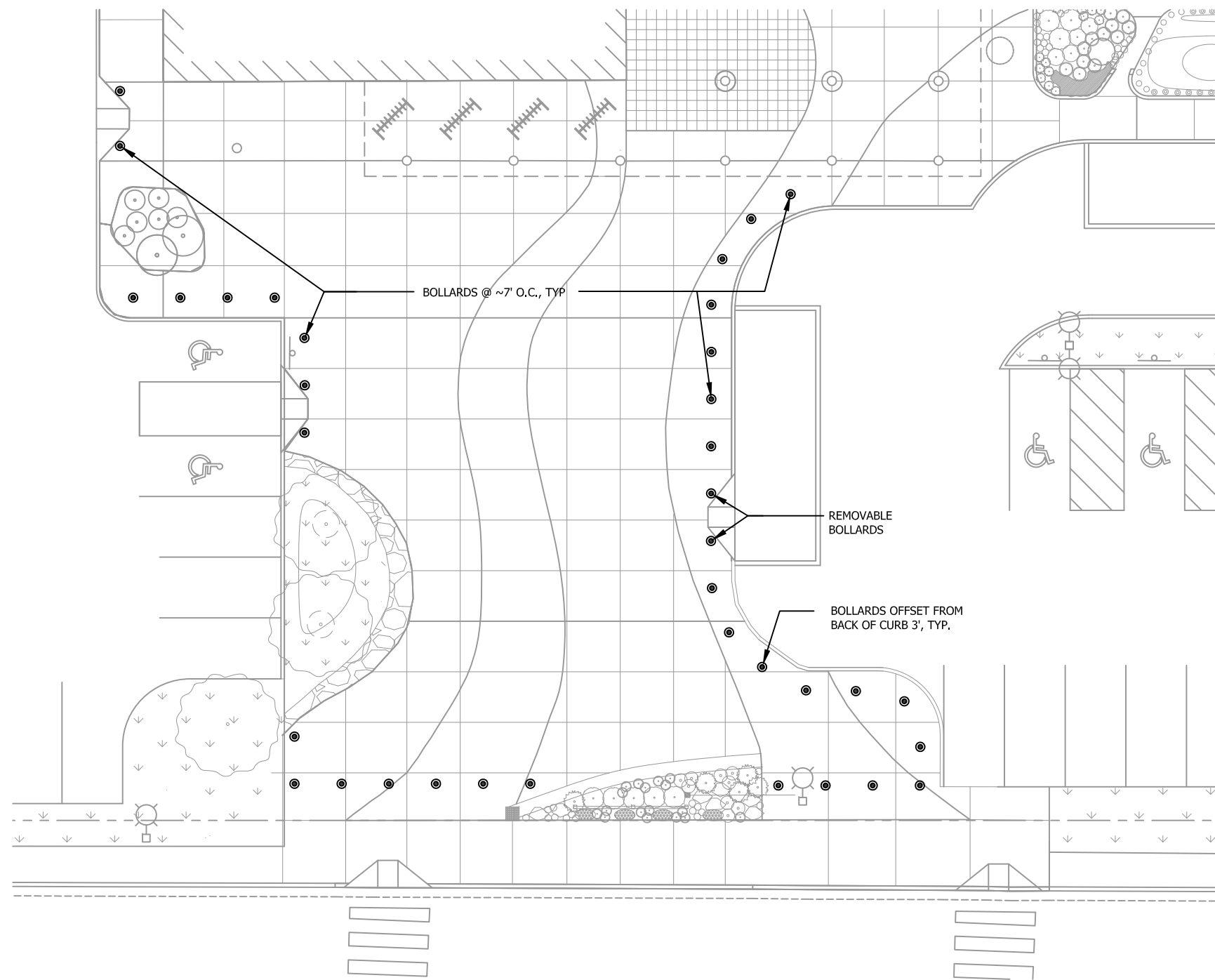
Scale: 1"=10'

0 10

Date:
MARCH 12, 2010

L03

Sheet number:
6 of 13



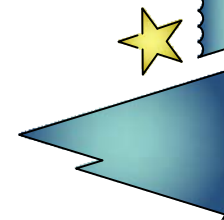
NOTE:

THE ALTERNATE INCLUDES BOLLARDS/
BOLLARD INSTALLATION ONLY. ALL ELSE
SHOWN IS EXISTING.

1 BOLLARD LOCATIONS @ FRONT ENTRY AREA- ALTERNATE #2
SCALE: 1"=20'

GLACIER VALLEY
ELEMENTARY SCHOOL
PLAYGROUND UPGRADES

CBJ CONTRACT NO. E10-209
-Architecture Division
CITY/BOROUGH OF JUNEAU Alaska's Capital City

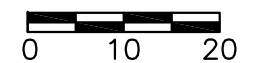


Sheet Title:
ENLARGED ENTRY
PLAZA PLAN

Project Manager: N. Coffee
Designed by: N. Coffee
Drafted By: S. Stekoll



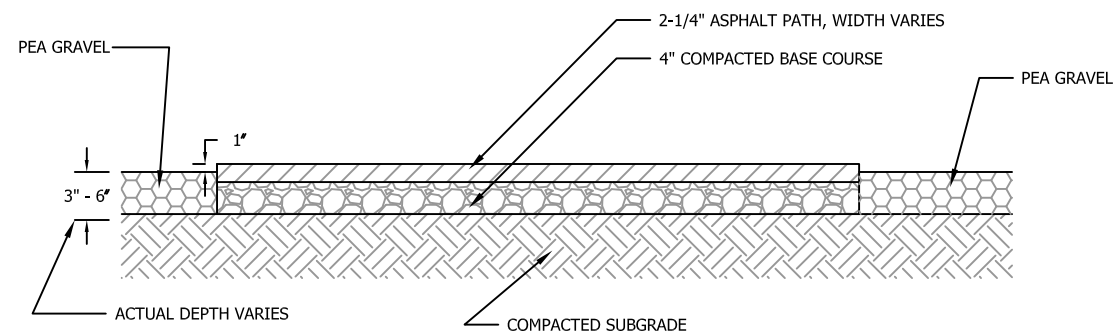
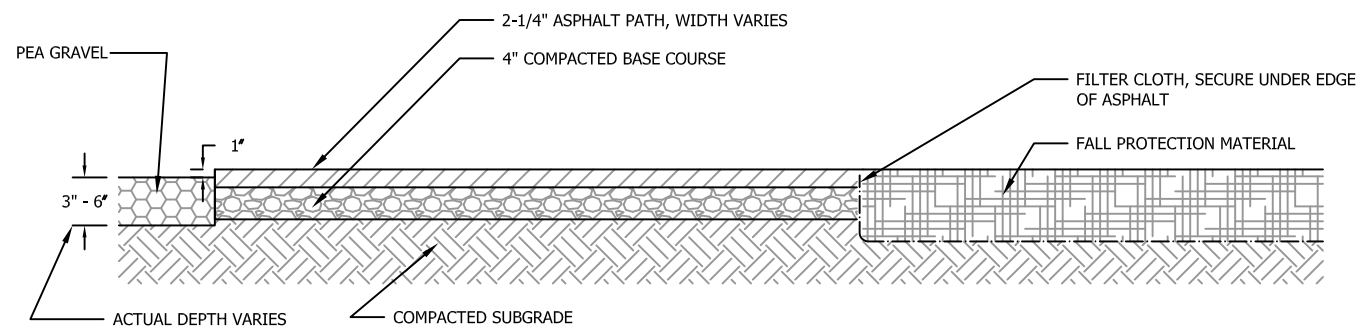
Scale: 1"=20'



Date:
MARCH 12, 2010

L04

Sheet number:
7 of 13

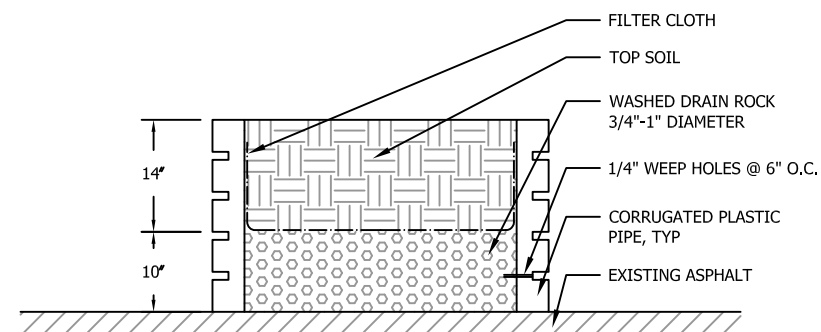
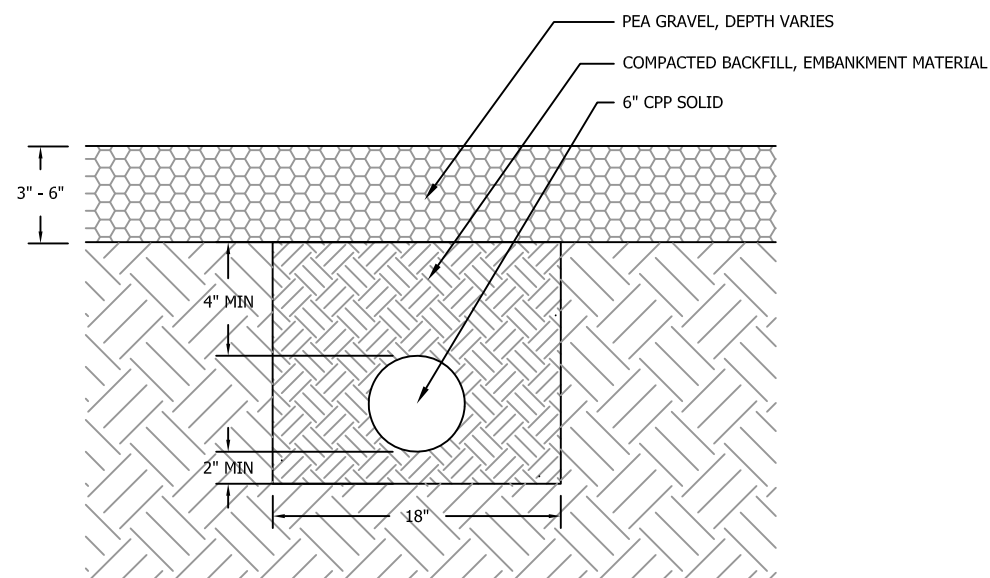
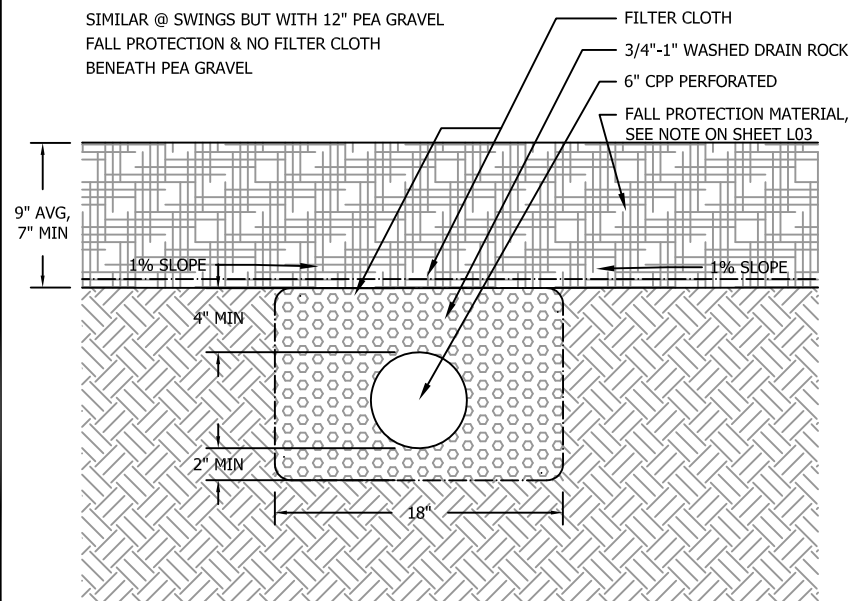


1 **PLAY AREA SECTION**
SCALE: 1/2" = 1' - 0"

2 **ASPHALT PATH SECTION**
SCALE: 1/2" = 1' - 0"

NOTE:

SIMILAR @ SWINGS BUT WITH 12" PEA GRAVEL
FALL PROTECTION & NO FILTER CLOTH
BENEATH PEA GRAVEL



3 **TRENCH DRAIN @ PLAY STRUCTURES**
SCALE: 1" = 1' - 0"

4 **SOLID CPP DETAIL**
SCALE: 1/2" = 1' - 0"

5 **PLANTER SECTION**
SCALE: 1/2" = 1' - 0"

GLACIER VALLEY
ELEMENTARY SCHOOL
PLAYGROUND UPGRADES
CBJ CONTRACT NO. E10-209
-Architecture Division
CITY/BOROUGH OF JUNEAU Alaska's Capital City



Sheet Title:

PLAYGROUND DETAILS

Project Manager: N. Coffee
Designed by: N. Coffee
Drafted By: S. Stekoll



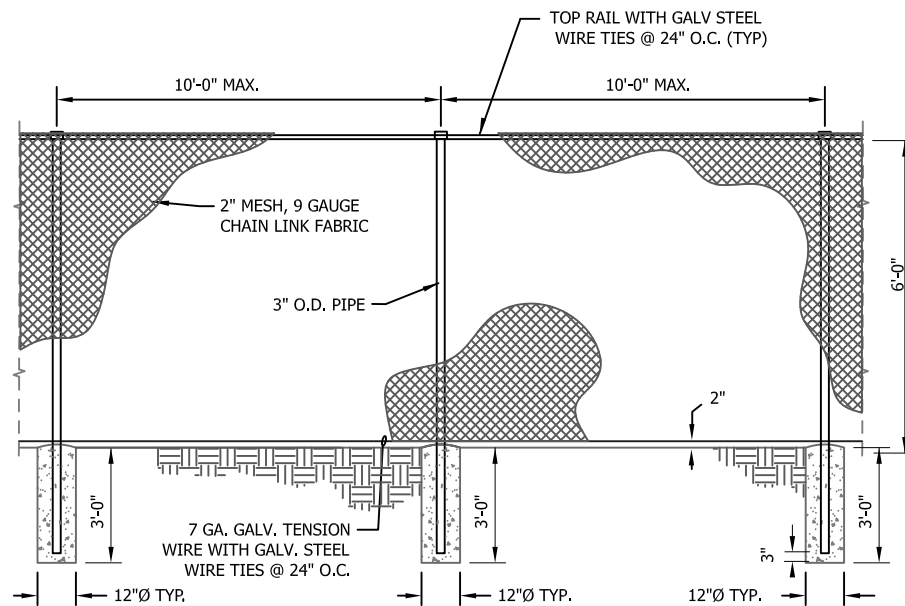
Scale: AS NOTED



Date:
MARCH 12, 2010

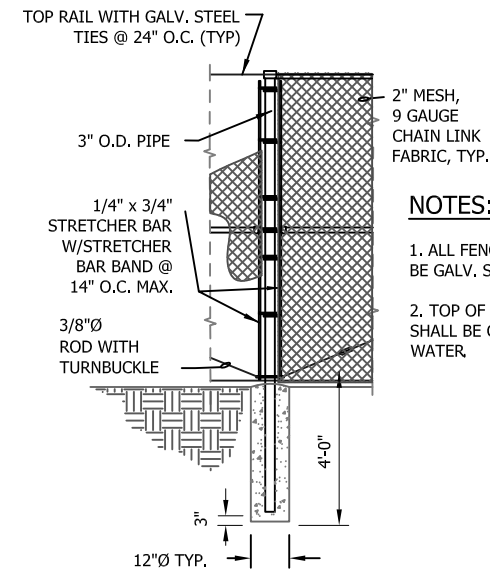
L05

Sheet number:
8 of 13



NOTES:

1. ALL FENCING MATERIAL SHALL BE GALVANIZED STEEL.
2. TOP OF CONCRETE FOOTING SHALL BE CROWNED TO SHED WATER.



NOTES:

1. ALL FENCING MATERIAL SHALL BE GALV. STEEL.
2. TOP OF CONCRETE FOOTING SHALL BE CROWNED TO SHED WATER.

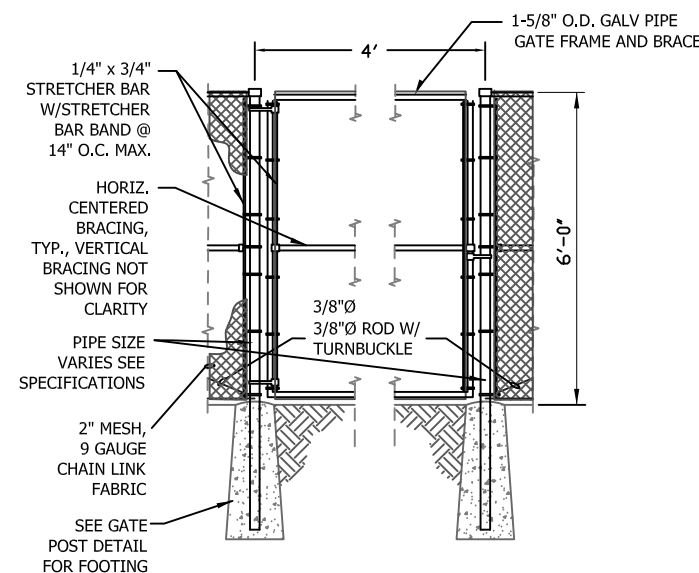
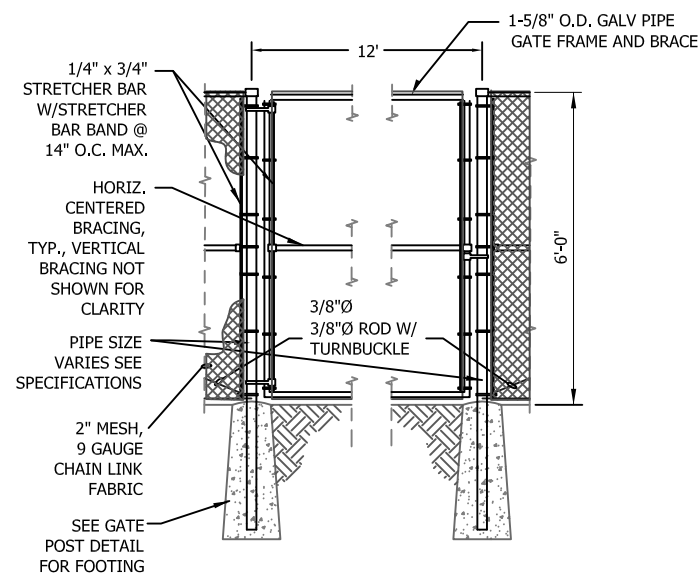
1 TYPICAL LINE FENCE + POSTS SCALE: 1/8" = 1' - 0"

NOTES:

1. ALL FENCING MATERIAL INCLUDING GATE HARDWARE SHALL BE GALV. STEEL.
2. LOCKABLE 1-3/8" CENTER DROP ROD, GUIDE, AND CENTERSTOP SHALL BE PROVIDED @ DOUBLE GATES. CENTERSTOP SHALL BE SET FLUSH WITH GRADE IN 8" Ø CONCRETE x 12" DEEP.
3. GATE SHALL BE PROVIDED WITH PROVISIONS FOR PADLOCKING.
4. CORNER FITTINGS FOR GATE FRAMES MAY BE USED IN LIEU OF WELDING.
5. GATE SHALL HAVE KNUCKLED SELVAGE TOP AND BOTTOM.
6. TOP OF CONCRETE FOOTING SHALL BE CROWNED TO SHED WATER.
7. VERTICAL BRACING SHALL BE 4' TO 6' APART.

NOTES:

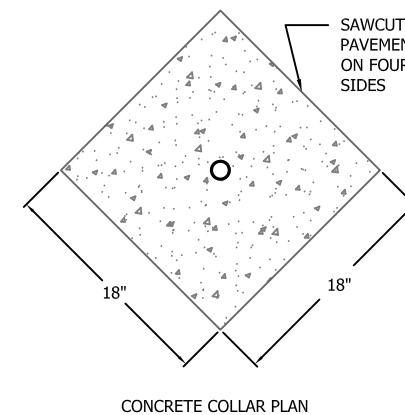
1. ALL FENCING MATERIAL INCLUDING GATE HARDWARE SHALL BE GALV. STEEL.
2. GATE SHALL BE PROVIDED WITH PROVISIONS FOR PADLOCKING.
3. CORNER FITTINGS FOR GATE FRAMES MAY BE USED IN LIEU OF WELDING.
4. GATE SHALL HAVE KNUCKLED SELVAGE TOP AND BOTTOM.
5. TOP OF CONCRETE FOOTING SHALL BE CROWNED TO SHED WATER.
6. VERTICAL BRACING SHALL BE 4' TO 6' APART.



3 DOUBLE SWING GATE- 12' SCALE: NTS

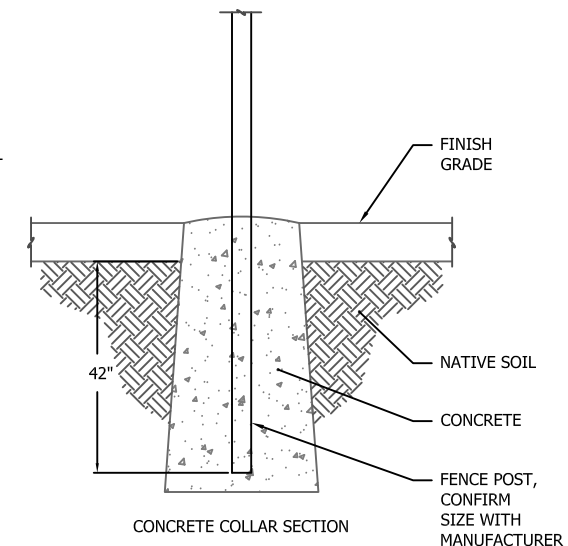
4 SINGLE SWING GATE SCALE: NTS

2 CORNER TO END POST SCALE: 1/8" = 1' - 0"



NOTES:

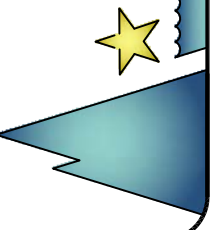
1. INSTALL CONCRETE COLLAR AROUND POSTS INSTALLED IN PAVED AREAS.
2. AFTER ADJUSTING POST TO FINISH GRADE, BACKFILL WITH CONCRETE ONLY.
3. ASHFORD FORMULA OR APPROVED EQUAL SHALL BE APPLIED AS A CURING COMPOUND. APPLICATION SHALL CONFORM TO MANUFACTURER RECOMMENDATIONS.
4. UNLESS IMMEDIATELY BACKFILLED WITH CONCRETE, ALL SAWCUTS AND EXCAVATIONS SHALL BE PROTECTED WITH STEEL PLATES OR OTHER SUITABLE MATERIALS.
5. INCREASE BOTTOM SECTIONS 6" CREATING BELL SHAPE.



5 GATE POST DETAIL SCALE: NTS

GLACIER VALLEY ELEMENTARY SCHOOL PLAYGROUND UPGRADES

CBJ CONTRACT NO. E10-209
-Architecture Division
CITY/BOROUGH OF JUNEAU Alaska's Capital City



Sheet Title:

FENCING DETAILS

Project Manager: N. Coffee
Designed by: N. Coffee
Drafted By: S. Stekoll



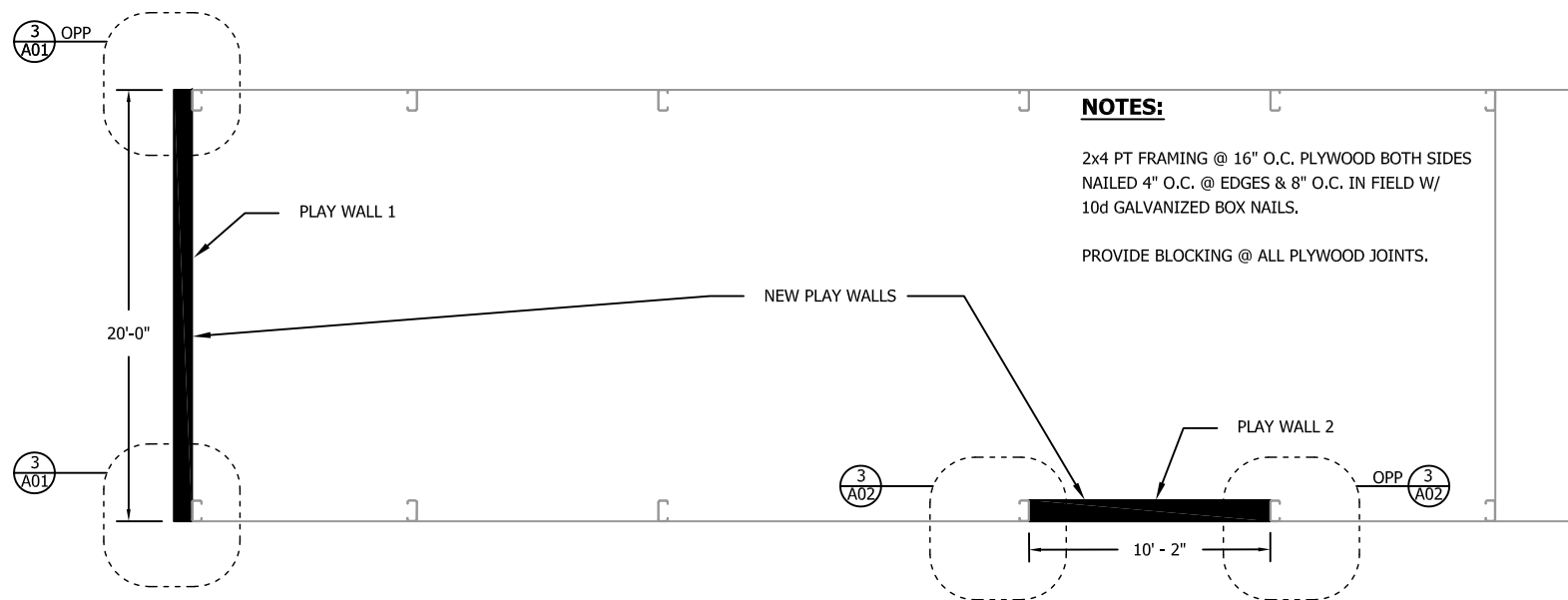
Scale: AS NOTED



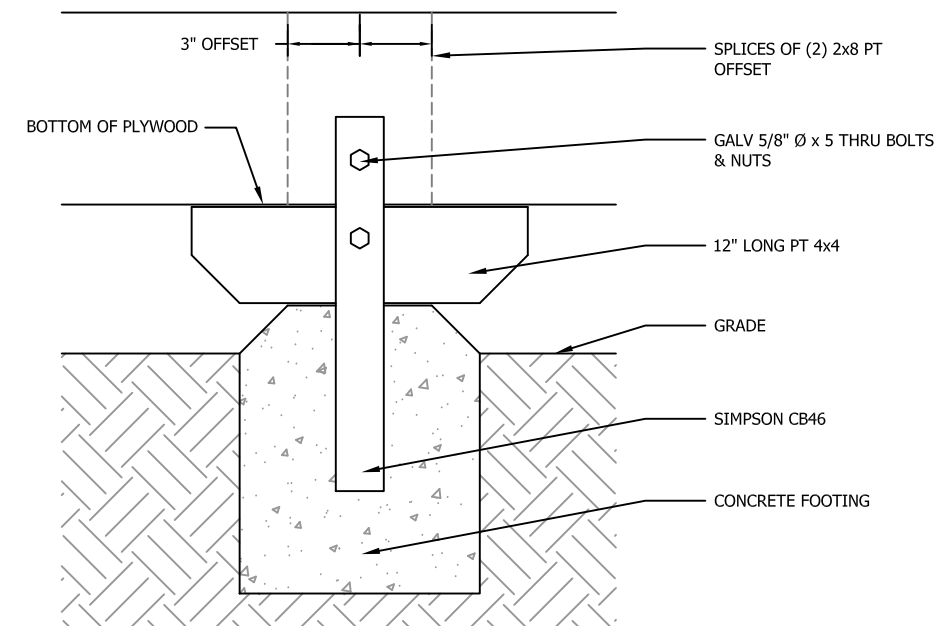
Date:
MARCH 12, 2010

L06

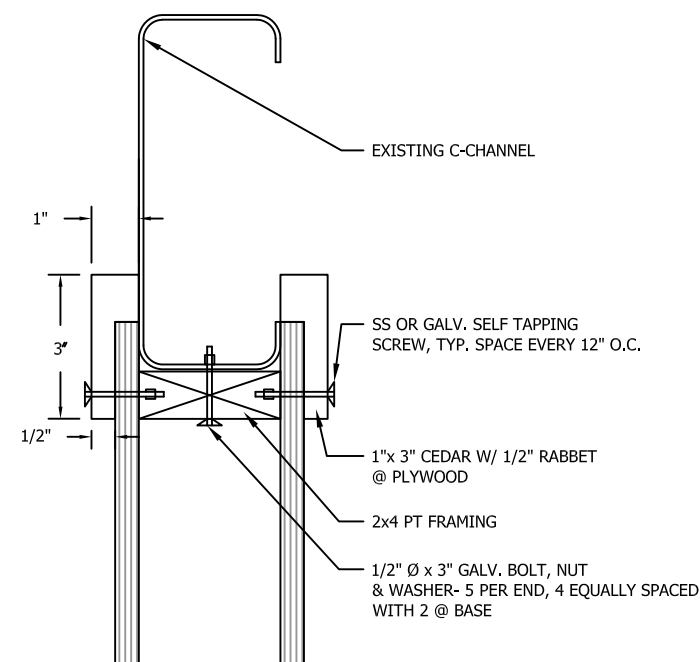
Sheet number:
9 of 13



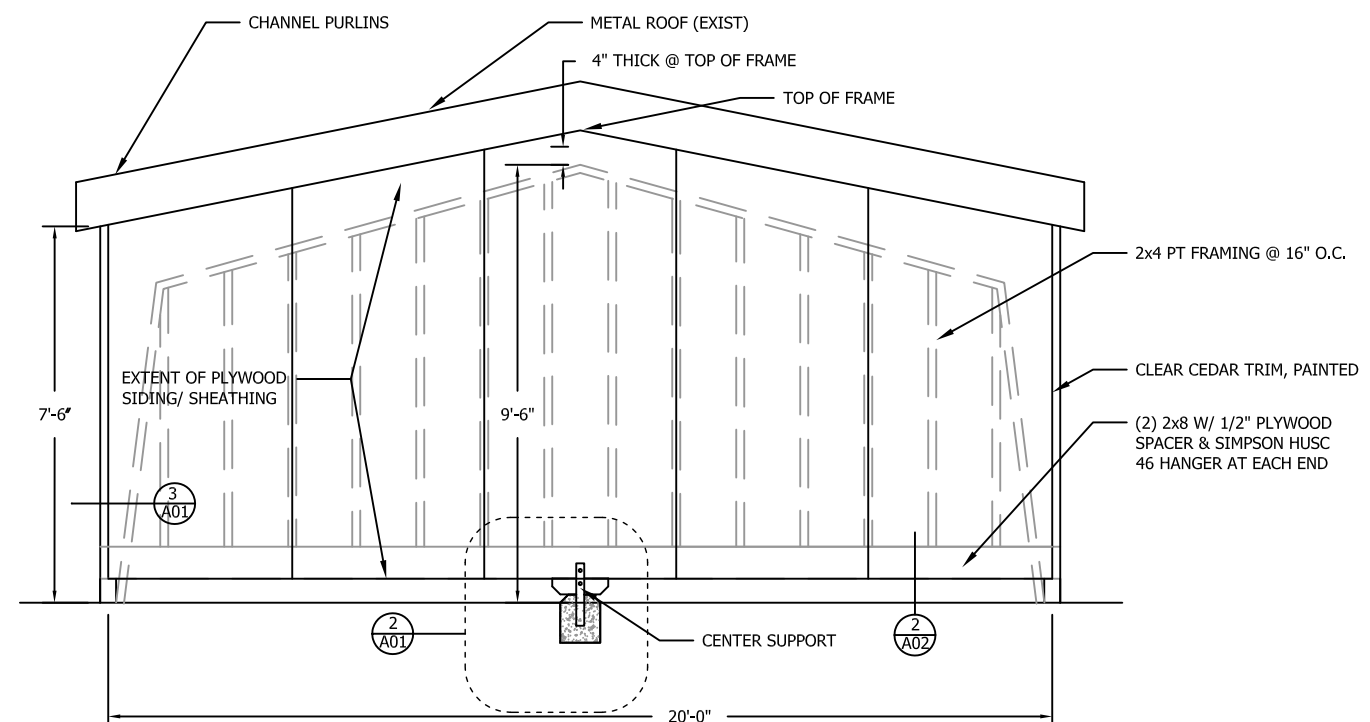
1 STEEL STRUCTURE PLAY WALL LOCATION PLAN
SCALE: 1" = 10' - 0"



2 SECTION @ GRADE
SCALE: 1-1/2" = 1' - 0"



3 C-CHANNEL CONNECTION
SCALE: NTS



4 PLAY WALL 1 ELEVATION
SCALE: 1/4" = 1' - 0"

GLACIER VALLEY
ELEMENTARY SCHOOL
PLAYGROUND UPGRADES

CBJ CONTRACT NO. E10-209
-Architecture Division
CITY/BOROUGH OF JUNEAU Alaska's Capital City



Sheet Title:

PLAY WALL ELEV
& DETAILS

Project Manager: N. Coffee
Designed by: N. Coffee
Drafted By: S. Stekoll



Scale: AS NOTED

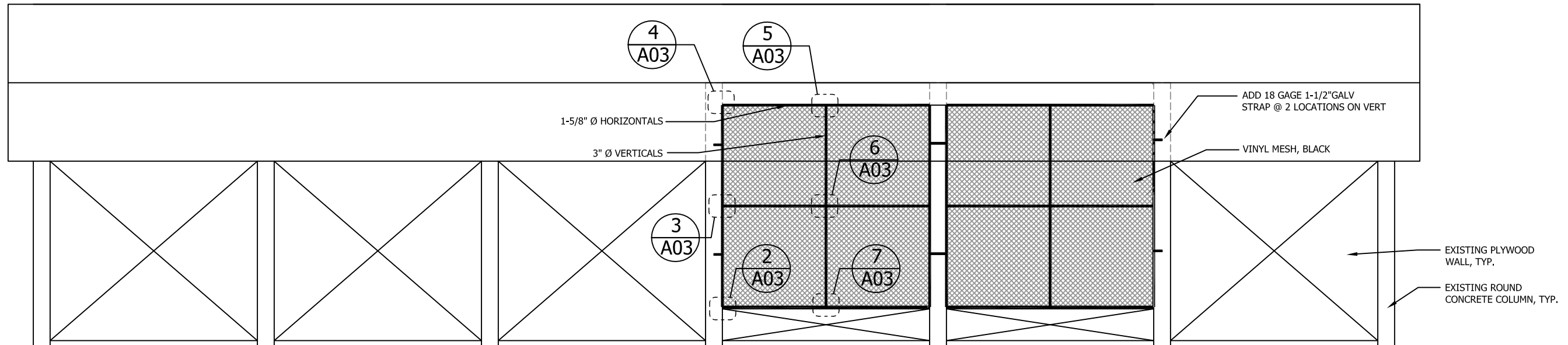
Date:
MARCH 12, 2010

A01

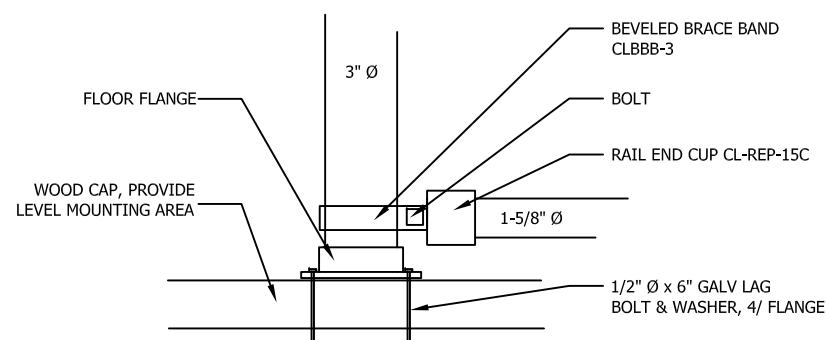
Sheet number:
10 of 13



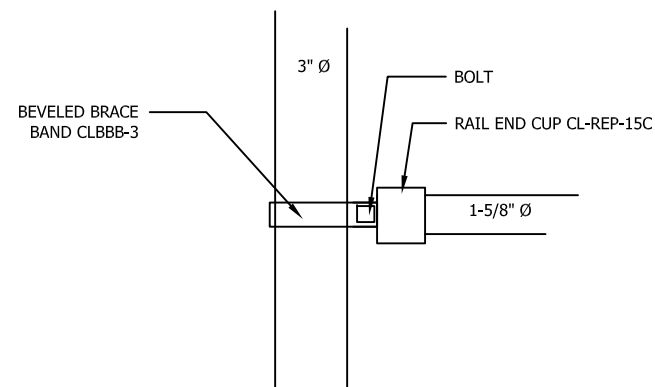
Sheet number:
11 of 13



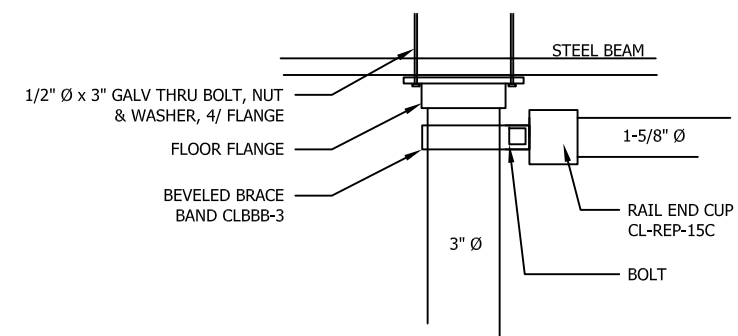
1 COVERED PLAY AREA FENCING ELEVATION
SCALE: 1"= 10'



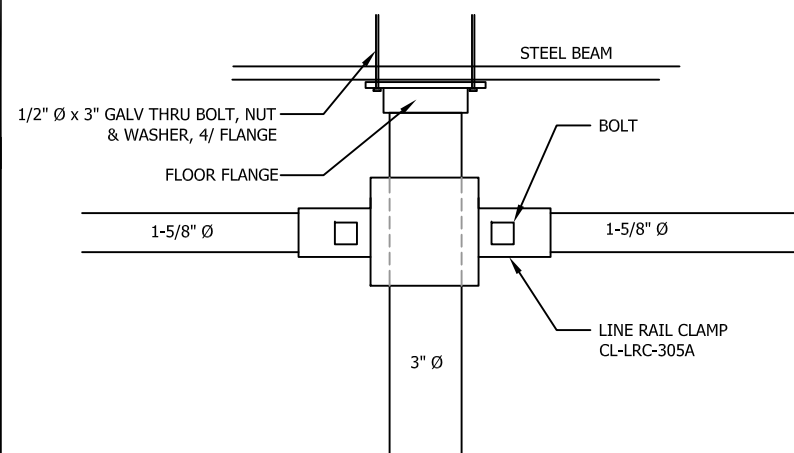
2 FENCE CONNECTION DETAIL
SCALE: 1-1/2"= 1' - 0"



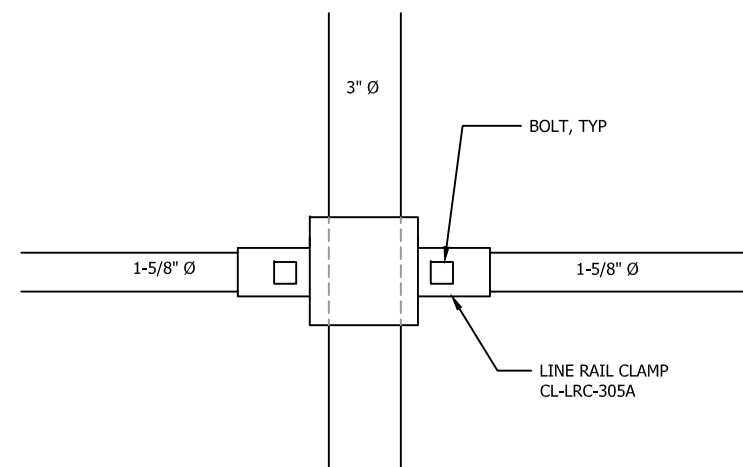
3 FENCE CONNECTION DETAIL
SCALE: 1-1/2"= 1' - 0"



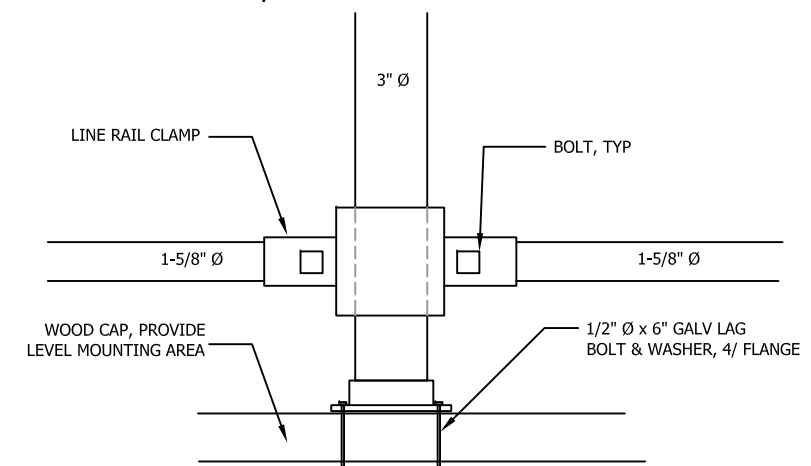
4 FENCE CONNECTION DETAIL
SCALE: 1-1/2"= 1' - 0"



5 FENCE CONNECTION DETAIL
SCALE: 1-1/2"= 1' - 0"



6 FENCE CONNECTION DETAIL
SCALE: 1-1/2"= 1' - 0"



7 FENCE CONNECTION DETAIL
SCALE: 1-1/2"= 1' - 0"

GLACIER VALLEY
ELEMENTARY SCHOOL
PLAYGROUND UPGRADES

CBJ CONTRACT NO. E10-209
-Architecture Division
CITY/BOROUGH OF JUNEAU Alaska's Capital City



Sheet Title:

PLAY AREA
FENCING ENCLOSURE

Project Manager: N. Coffee
Designed by: N. Coffee
Drafted By: S. Stekoll

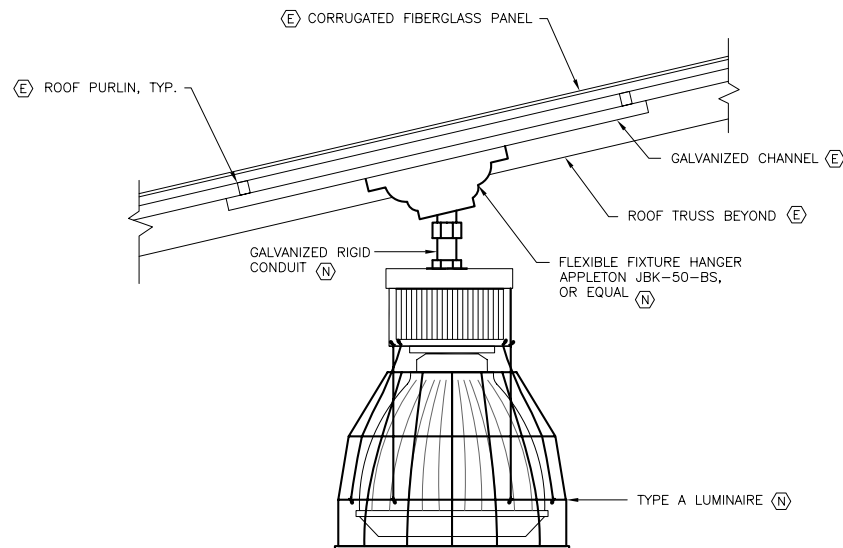


Scale: AS NOTED

Date:
MARCH 12, 2010

A03

Sheet number:
12 of 13

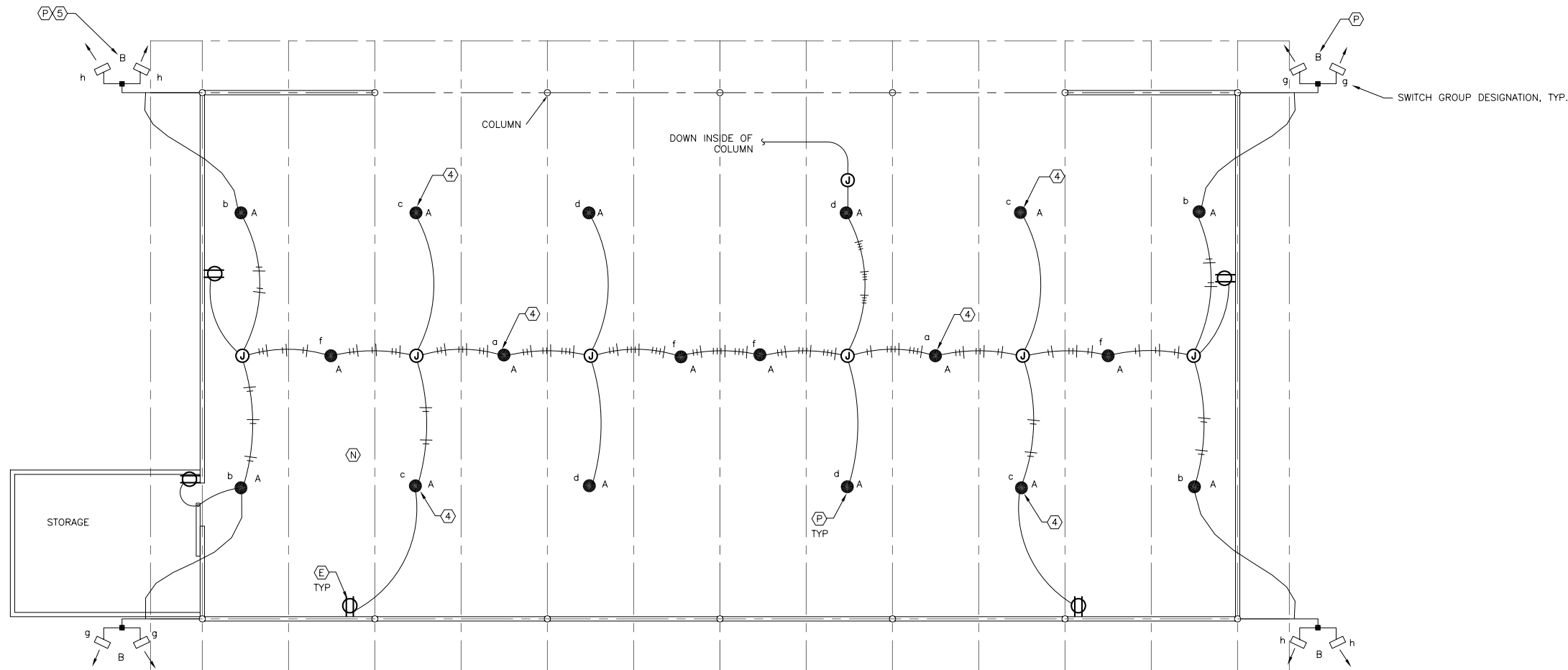
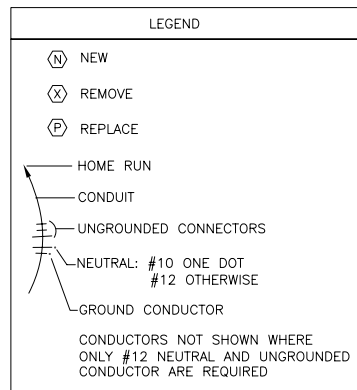


- NOTES:
1. REPLACE ALL TYPE A LUMINAIRES AS SCHEDULED. PROVIDE NEW MOUNTING HARDWARE AS ILLUSTRATED IN DETAIL 2.
 2. REPLACE TYPE B LUMINAIRES ON NORTH SIDE OF STRUCTURE AS SCHEDULED. MOUNT TO EXISTING CROSS ARM SUPPORT. PROVIDE MOUNTING HARDWARE AS REQUIRED.
 3. RACEWAYS AND WIRING ARE EXISTING, UON.
 4. EXISTING LUMINAIRE REMOVED BY OWNER. PROVIDE NEW LUMINAIRE AS SCHEDULED.
 5. RE-WIRE TO SWITCH GROUP g.

LUMINAIRE SCHEDULE				
TYPE	DESCRIPTION	MANUFACTURER	LAMPS	REMARKS
A	22" DIA PENDANT MOUNT HID HIGH BAY INDUSTRIAL, WITH PRISMATIC ACRYLIC REFRACTOR, FULL WIREGUARD, 1 LAMP.	WIDE-LITE ILXP-400-C22E-120-FWG	(1) 400W MH 3600K, CRI 70 VENTURE PULSE-START	PENDANT LIGHT MOUNTING HEIGHT 24'
B	FLOOD LIGHT WITH DIE CAST ALUMINUM HOUSING, TEMPERED GLASS LENS, TOP VISOR, ANODIZED ALUMINUM ALLOY REFLECTOR, WIDE DISTRIBUTION	HOLOPHANE PF-40LPM-VT-K-W-1-B-C-08657	(1) 400W MH PULSE-START	FLOOD LIGHT MOUNTING HEIGHT 22'

2 COVERED PLAY AREA-LUMINAIRE MOUNTING DETAIL

NO SCALE



1 EXISTING LIGHTING PLAN

