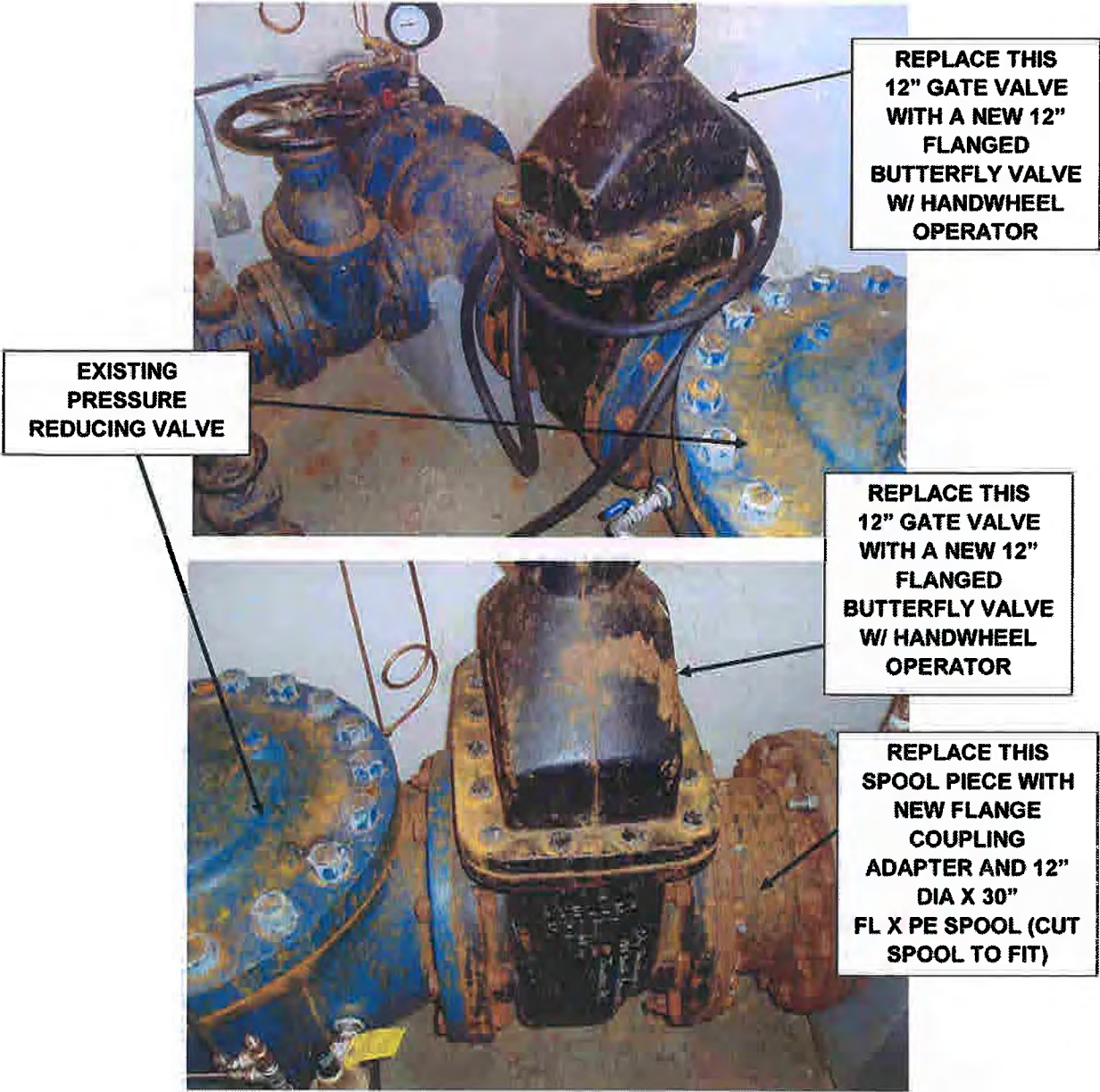


PROJECT DESCRIPTION

1. THIS PROJECT INCLUDES THE FOLLOWING:
- a. REMOVE FIVE EXISTING VALVES IN SOUTH FRANKLIN STREET AND REPLACE WITH THREE NEW 12" DIAMETER WATER BUTTERFLY VALVES SUITABLE FOR BURIED INSTALLATIONS AND MEETING THE REQUIREMENTS OF AWWA C-504, WITH FITTINGS AND PIPING AS SHOWN, (INSTALL VALVES SIMILAR TO CBJ STANDARD DETAIL 407). REMOVE AND REPLACE ASPHALT CONCRETE PAVING AND D-1 SUBBASE AS SHOWN IN SOUTH FRANKLIN STREET SIMILAR TO CBJ STANDARD DETAIL 125. ALL FITTINGS AND VALVES SHALL BE RESTRAINED MECHANICAL JOINT.

b. REMOVE TWO 12" EXISTING GATE VALVES AND REPLACE WITH TWO 12" FLANGED BUTTERFLY VALVES W/ HANDWHEEL OPERATORS IN THE MILL TUNNEL PRESSURE REDUCING BUILDING ALONG WITH NEW GASKETS AND STAINLESS STEEL BOLTS AND A NEW FLANGE COUPLING ADAPTER WITH ANCHOR PINS (ROMAC FCA 501 OR APPROVED EQUAL) AND 12" X 30", FL X PE SPOOL PIECE (CUT TO SIZE).

c. CONNECT TO THE EXISTING 4" PVC MILL TUNNEL PRESSURE REDUCING BUILDING DRAIN WITH A 45 DEGREE BEND AND ROUTE APPROXIMATELY 60' TO A DRAINAGE SWALE SOUTH OF THE BUILDING. SLOPE AT 2% TO DAYLIGHT. REMOVE ALDERS AS NEEDED. DEPTH VARIES WITH A MAX DEPTH OF ABOUT 4'.
2. THE CITY AND BOROUGH OF JUNEAU, ENGINEERING DEPARTMENT STANDARD SPECIFICATIONS FOR CIVIL ENGINEERING PROJECTS AND SUBDIVISION IMPROVEMENTS DECEMBER 2003 EDITION, ALONG WITH ERRATA SHEETS, AND THE CURRENT CBJ STANDARD DETAILS AS PUBLISHED BY THE CITY AND BOROUGH OF JUNEAU, ARE PART OF THESE CONTRACT DOCUMENTS AND SHALL PERTAIN TO ALL PHASES OF THE CONTRACT.
3. ALL EXISTING FACILITIES SHALL BE PROTECTED AND MAINTAINED THROUGHOUT CONSTRUCTION. ANY IMPACT ON EXISTING FACILITIES SHALL BE REPAIRED TO PREEXISTING CONDITIONS. DIAL BEFORE YOU DIG 586-1333, TO LOCATE UNDERGROUND UTILITIES.
4. ALL WATER VALVES, FITTINGS AND PIPE FOR THIS PROJECT SHALL BE NSF 61 LISTED.
5. THE ALASKA DEPARTMENT OF TRANSPORTATION AND PUBLIC FACILITIES UTILITY PERMIT IS PART OF THESE CONTRACT DOCUMENTS AND THE CONTRACTOR SHALL COMPLY WITH ALL REQUIREMENTS CONTAINED IN THE PERMIT.
6. CONTRACTOR SHALL SUBMIT A TRAFFIC CONTROL PLAN TO THE ALASKA DEPARTMENT OF TRANSPORTATION AND PUBLIC FACILITIES FOR REVIEW AND APPROVAL BEFORE BEGINNING ANY FIELD WORK.
7. THE CONTRACTOR SHALL NOTIFY THE CBJ WATER DEPARTMENT AT LEAST 48 HOURS BEFORE BEGINNING ANY WORK ON THE PROJECT. THE CBJ WATER DEPARTMENT WILL CLOSE A VALVE BETWEEN MILL TUNNEL AND THE PROJECT AND THE VALVES ON EACH SIDE OF THE PROJECT ON SOUTH FRANKLIN STREET. CLOSURE OF THE VALVES DOES NOT GUARANTEE THE VALVES WILL CLOSE DRIP TIGHT.
8. CONTRACTOR SHALL BE RESPONSIBLE FOR ENSURING WATER SERVICE IS MAINTAINED THROUGHOUT THE PROJECT. WATER SERVICE MAY BE INTERRUPTED FOR A MAXIMUM OF 1 HOUR. IF NECESSARY, THE CONTRACTOR SHALL PROVIDE WATER SERVICE BY INSTALLING TEMPORARY WATER SERVICE BETWEEN FIRE HYDRANTS ON EACH SIDE OF THE PROJECT. THE VALVE ON THE THANE ROAD SIDE OF THE PROJECT WILL NEED TO BE INSTALLED IN ORDER FOR TEMPORARY SERVICE TO BE ESTABLISHED.
9. WATER VALVES, FITTINGS AND PIPE INSTALLED AS PART OF THIS PROJECT SHALL BE CLEAN AND SWABBED WITH A CLEAN RAG WITH A CHLORINE CONCENTRATION OF AT LEAST 50 PPM PRIOR TO INSTALLATION. THE NEW VALVES, FITTINGS AND PIPE SHALL BE CHECKED FOR LEAKS BEFORE BURYING. ANY LEAKS SHALL BE CORRECTED AND TESTED AGAIN BEFORE BURYING.



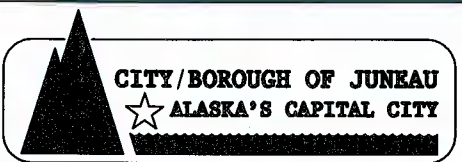
REPLACE TWO 12" GATE VALVES WITH 12" BUTTERFLY VALVES AND INSTALL A FLANGE COUPLING ADAPTER AND SPOOL PIECE IN THE EXISTING MILL TUNNEL PRESSURE REDUCING VALVE BUILDING

DIAL BEFORE YOU DIG !
586-1333
UNDERGROUND UTILITIES INCLUDING BUT NOT LIMITED TO WATER, SEWER, POWER, TELEPHONE, & CABLE T.V. SHOWN ON THIS DRAWING INDICATE EXISTENCE ONLY AND DO NOT SUBSTITUTE FOR FIELD LOCATES.

G:\oad\cbj\South Franklin Water Improvements.dwg PLOT: March 16, 2010 at 11:48am Administrator

REV	DATE	BY	DESCRIPTION

SCALE GRAPHIC
DESIGNED JLD
DRAWN GDM
CHECKED JLD
DATE MARCH 2010



SOUTH FRANKLIN
WATER LINE IMPROVEMENTS
CONTRACT NO. RFQ E10-229

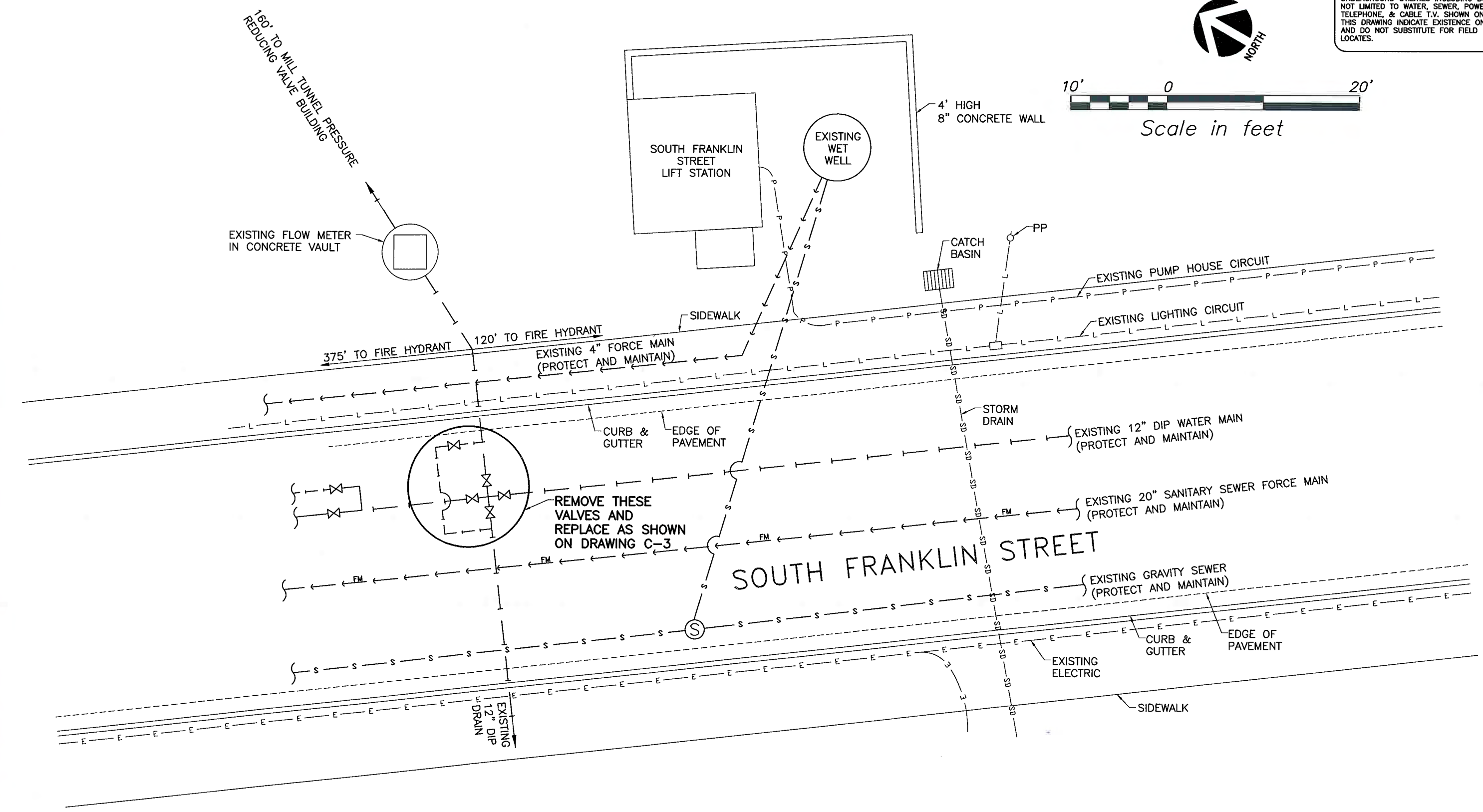
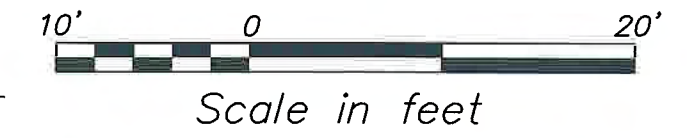


Carson Dorn Inc.
712 WEST 12TH STREET
JUNEAU, ALASKA 99801
(907) 586-4447

PROJECT DESCRIPTION

DRAWING
C-1
SHEET No.
1 of 3

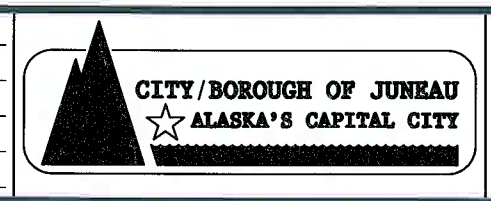
DIAL BEFORE YOU DIG !
586-1333
UNDERGROUND UTILITIES INCLUDING BUT NOT LIMITED TO WATER, SEWER, POWER, TELEPHONE, & CABLE T.V. SHOWN ON THIS DRAWING INDICATE EXISTENCE ONLY AND DO NOT SUBSTITUTE FOR FIELD LOCATES.



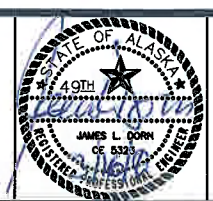
G:\2009\cib\South Franklin Water Improvements.dwg PLO: March 16, 2010 at 12:02pm Administrator

REV	DATE	BY	DESCRIPTION

SCALE	GRAPHIC
DESIGNED	JLD
DRAWN	GDM
CHECKED	JLD
DATE	MARCH 2010



SOUTH FRANKLIN
WATER LINE IMPROVEMENTS
CONTRACT NO. RFQ E10-229



Carson Dorn Inc.
712 WEST 12TH STREET
JUNEAU, ALASKA 99801
(907) 586-4447

EXISTING SITE PLAN

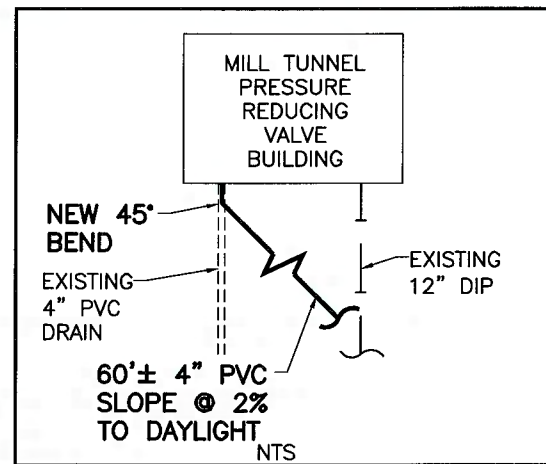
DRAWING
C-2
SHEET No.
2 of 3

586-1333

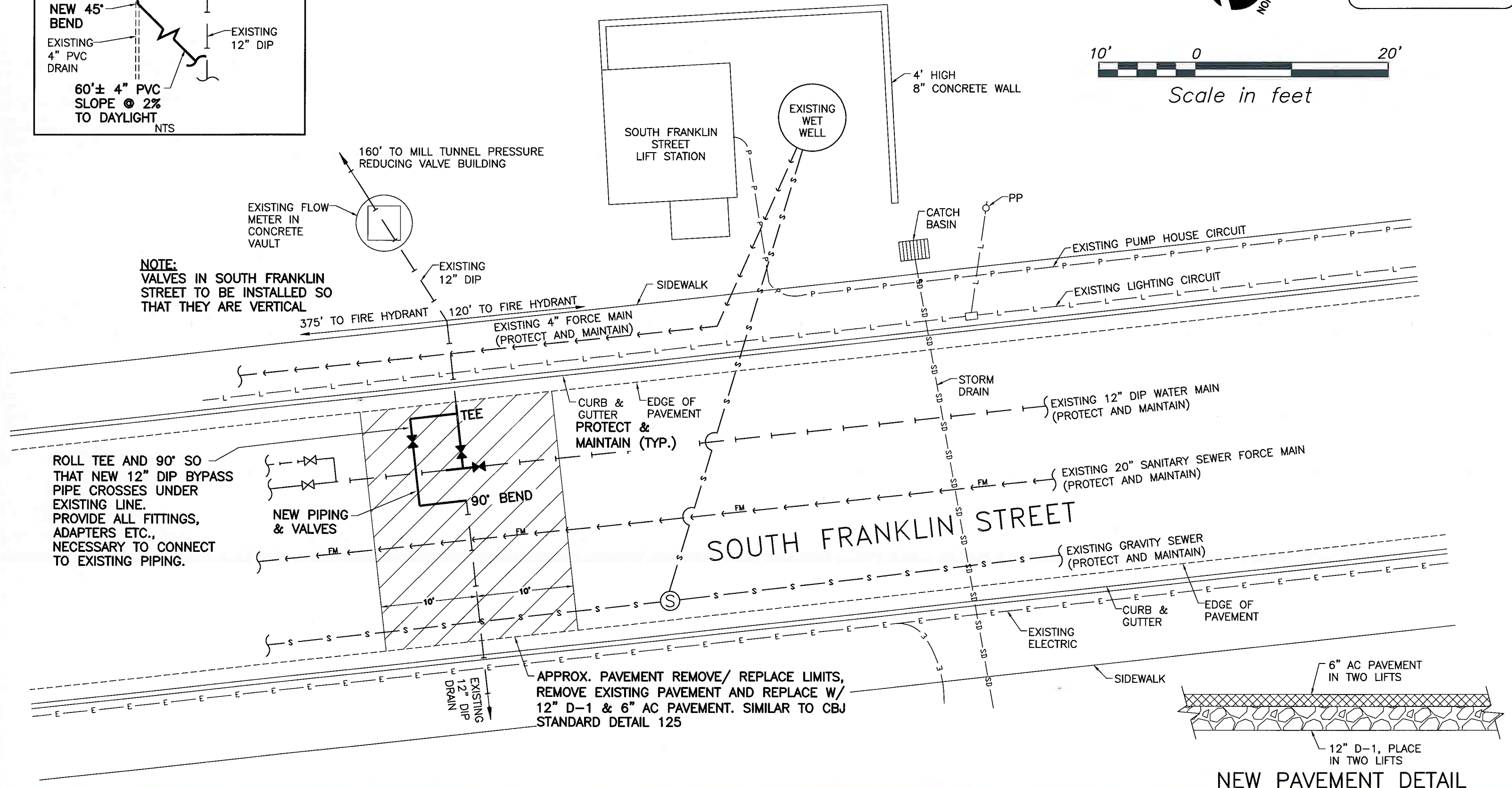
UNDERGROUND UTILITIES INCLUDING BUT NOT LIMITED TO WATER, SEWER, POWER, TELEPHONE, & CABLE T.V. SHOWN ON THIS DRAWING INDICATE EXISTENCE ONLY AND DO NOT SUBSTITUTE FOR FIELD LOCATES.



Scale in feet

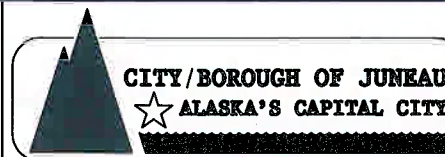


NOTE:
VALVES IN SOUTH FRANKLIN
STREET TO BE INSTALLED SO
THAT THEY ARE VERTICAL

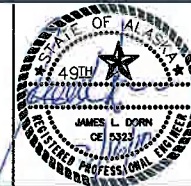


NEW PAVEMENT DETAIL

SCALE GRAPHIC
DESIGNED JLD
DRAWN GDM
CHECKED JLD
DATE MARCH 2010



**SOUTH FRANKLIN
WATER LINE IMPROVEMENTS
CONTRACT NO. RFQ E10-229**



Carson Dorn Inc.

712 WEST 12TH STREET
JUNEAU, ALASKA 99801
(907) 586-4447

NEW PIPING PLAN

DRAWING

C-3

SHEET No.
3 of 3

C:\zood\cb\S.Franklin Water\Imprints.dwg PLOT: March 16, 2010 at: 1:14pm Administrator