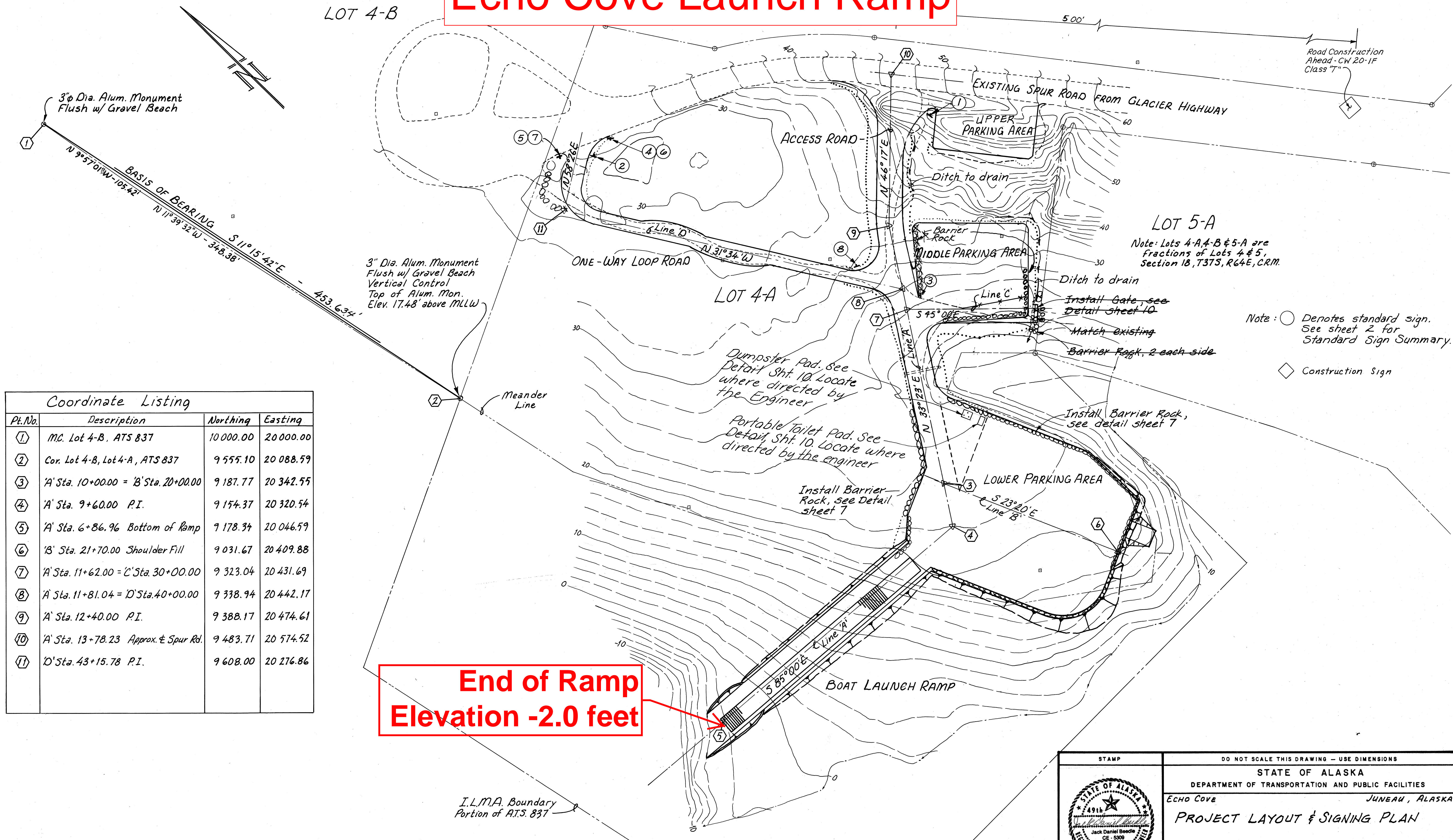


# Echo Cove Launch Ramp



Coordinate Listing

Pt.No.	Description	Northing	Easting
①	MC. Lot 4-B, ATS 837	10 000.00	20 000.00
②	Cor. Lot 4-B, Lot 4-A, ATS 837	9 555.10	20 088.59
③	'A' Sta. 10+00.00 = 'B' Sta. 20+00.00	9 187.77	20 342.55
④	'A' Sta. 9+60.00 P.I.	9 154.37	20 320.54
⑤	'A' Sta. 6+86.96 Bottom of Ramp	9 178.34	20 046.59
⑥	'B' Sta. 21+70.00 Shoulder Fill	9 031.67	20 409.88
⑦	'A' Sta. 11+62.00 = 'C' Sta. 30+00.00	9 323.04	20 431.69
⑧	'A' Sta. 11+81.04 = 'D' Sta. 40+00.00	9 338.94	20 442.17
⑨	'A' Sta. 12+40.00 P.I.	9 388.17	20 474.61
⑩	'A' Sta. 13+78.23 Approx. E Spur Rd.	9 483.71	20 574.52
⑪	'D' Sta. 43+15.78 P.I.	9 608.00	20 276.86

**End of Ramp  
Elevation -2.0 feet**

	DO NOT SCALE THIS DRAWING - USE DIMENSIONS			
	STATE OF ALASKA DEPARTMENT OF TRANSPORTATION AND PUBLIC FACILITIES			
	ECHO COVE		JUNEAU, ALASKA	
<b>PROJECT LAYOUT &amp; SIGNING PLAN</b>				
DESIGNED <i>WmN</i>	CHECKED <i>JDB</i>	DRAWN <i>WmN</i>	DATE <i>Dec 1989</i>	
PROJECT NUMBER <i>69716</i>	SHEET <i>3</i> OF <i>10</i>			