

Airfield Summer Update



October 10, 2017

1

Busy Summer



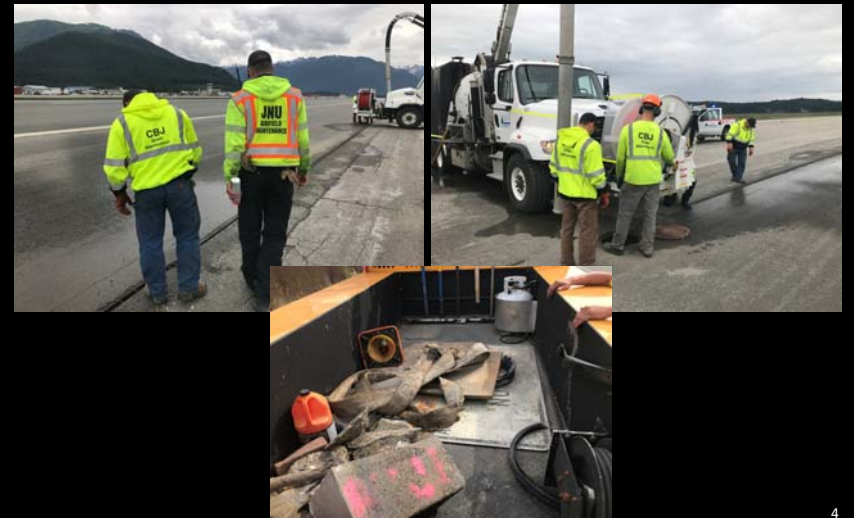
2

Military Traffic



3

Slotted Runway Drain



4

Storm Drain Basins



5

Vehicle Wash Wednesdays



6

Heavy Maintenance



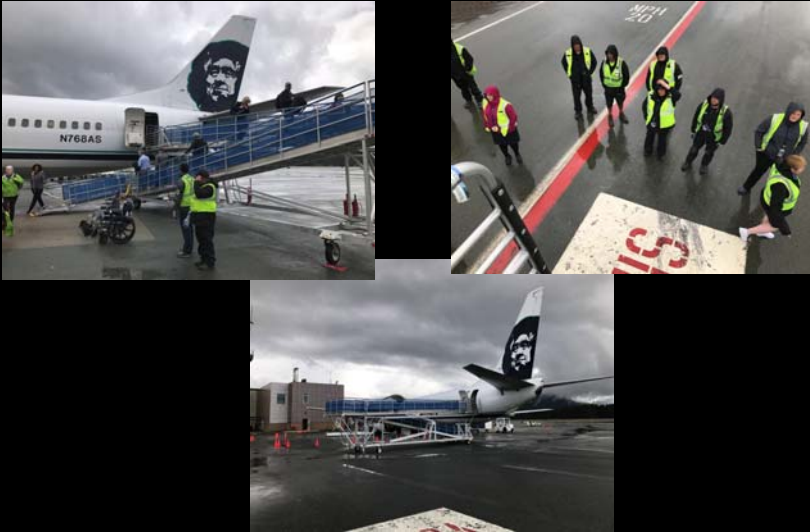
7

New Warning Beacons



8

Alaska Airlines



9

Assisting Tenants



10

Abandoned Vehicles



11

EVAR Trail Parking Lot



12

Main Entry Gates



13

New Main Entry Gates



14

International Arrivals / Customs



15

Painting



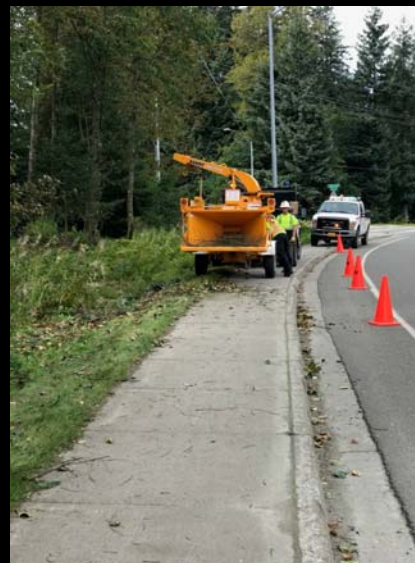
16

Perimeter Fence



17

Tree Trimming / Grounds Keeping



18

Float Pond



19

AFM Training Committee

- Training Committee
 - Members
 - Two Senior Operators
 - Two Equipment Operators
 - Field Training Coach
 - One Airfield Support Specialist
 - Senior Mechanic



20

AFM Training Committee

- Prescribed Practices:
 - Snow Removal Tactics and Practices
 - Snow Removal Priorities
 - Snow Storage Areas
 - Panic Piles / Long-Term Storage
 - Ice Control Measures
 - Runway/Taxiway/In-Ground Lights
 - End of Season Clean-Up

21

AFM Training Committee

- Specialized Equipment Training:
 - Preventative Maintenance
 - Pre Operation
 - Specific Functions
 - Post Operation
 - Specific Equipment Checkrides
 - Brooms
 - Plow Trucks
 - Graders
 - Loaders and Blades
 - Other Equipment
 - Friction Measurements



22

Core Values

- **S**afety Everyone's responsibility
- **O**penness Everyone has a voice
- **A**ccountability Success demands ownership of our actions and outcomes
- **R**espect Honor our customers and each other
- **I**ntegrity Honest and ethical in everything we do with moral soundness
- **N**ice Be kind, courteous and invite collaboration
- **G**rowth Committed to developing our airport and ourselves

23

Winter Snow/Ice Statistics

- **2016-17 Season**
 - Area AFM is responsible for:
 - Runway & Taxiways
 - Main Ramp / Gates / 135 Area
 - East & West GA Areas
 - Alex Holden / Cessna Dr. / Fuel Farm
 - Terminal / Shell Simmons / Employee Parking Lot
 - Float Pond Roads and EVAR
 - **Equals 8,046,123 Square Feet of Area**
 - Equalities 47.6 Miles of 2-Lane Hwy. w/ 4' Shoulders

24

Winter Snow/Ice Statistics

— Snow Calculations

- Total Snow Fall – 65.2 inches (NWS – Airport)
- **43,717,270** Cubic Ft. of snow plowed, swept and removed
- Average Weight: 17.671 lbs. / CF
- **386,264** Tons
- **772,527,876** lbs.

25

Forecast – Winter 2017/18



26

Forecast – Winter 2017/18

- El Niño or La Niña event across North America?
 - Recurring climate pattern involving changes in water temperature
 - Central and eastern tropical Pacific Ocean
 - Massive impact on the jet stream
 - Changes in winter weather patterns

27

Forecast – Winter 2017/18

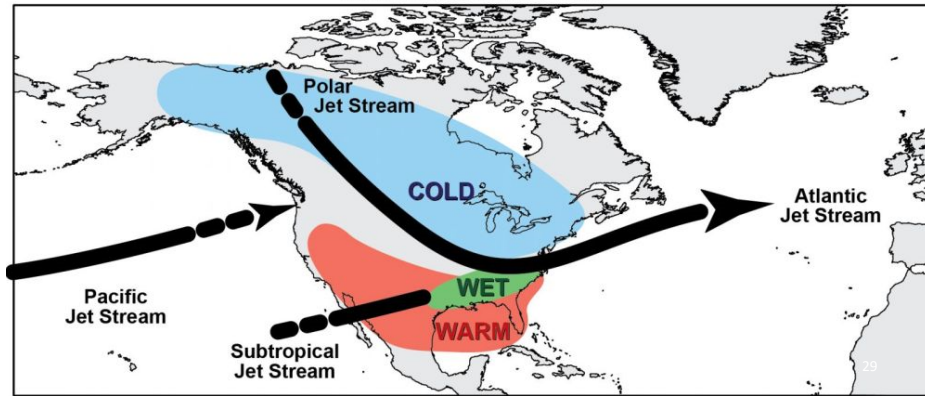
- El Niño or La Niña event across North America?
 - Currently the Climate Prediction Center is calling for a ENSO-neutral
 - Neither a El Niño or La Niña event
 - Remainder of 2017 and into 2018
 - Some models are predicting/leaning for the onset of a weak La Niña event.

28

Forecast – Winter 2017/18

- What to expect?
 - Potential colder than normal temperatures
 - Potential above-average precipitation

ENSO-Neutral Winter Pattern



Forecast – Winter 2017/18



Questions?



Anything is possible, the impossible just takes longer...