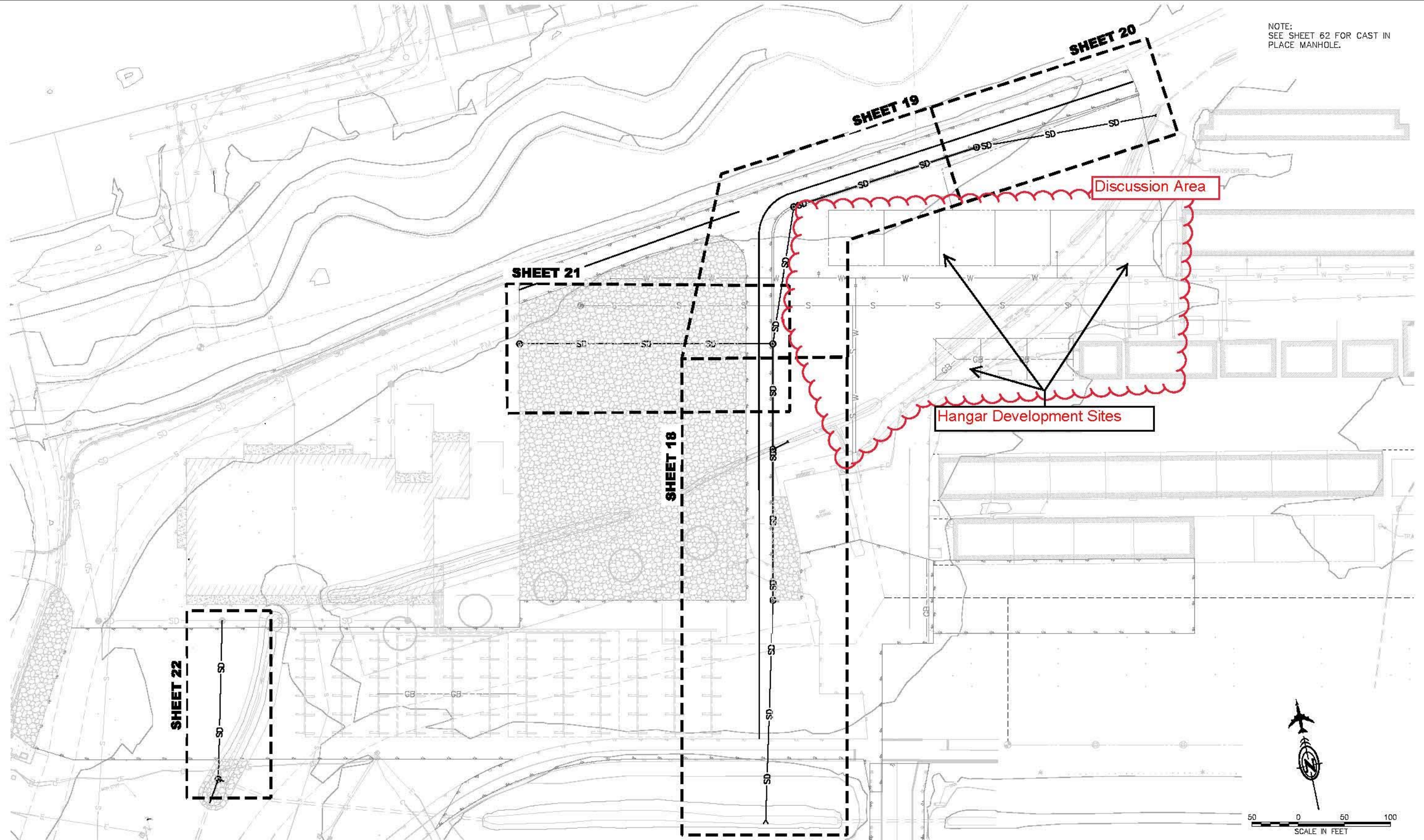


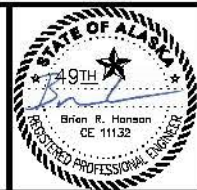
NOTE:
SEE SHEET 62 FOR CAST IN
PLACE MANHOLE.

File: C:\Civil_3D\Projects\23\62033-01\Aviation\Design\SA14-AV-PI-JNU-62033.dwg
 Script Title: DOWL File No. 232-89
 Designed By: G. WILT
 Checked By: B. HANSON
 Drawn By: C. SLATTEN



BY	DATE	REVISIONS

SCALE	
HORZ.	SCALE
VERT.	SEE GRAPHIC
W.O. NO.	1123.62033
FILE NO.	

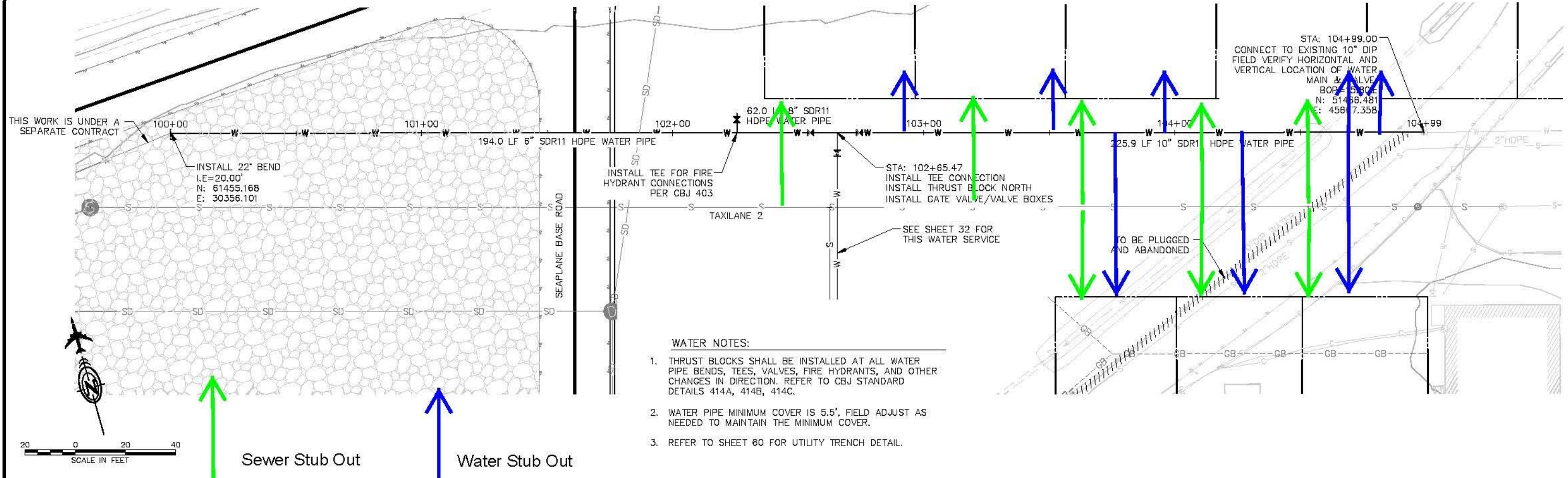


PLAN PREPARED BY:
DOWL
 #AECL848 www.dowl.com
 4041 B Street
 Anchorage, Alaska 99503
 907-562-2000
 DATE: 8/2/2016

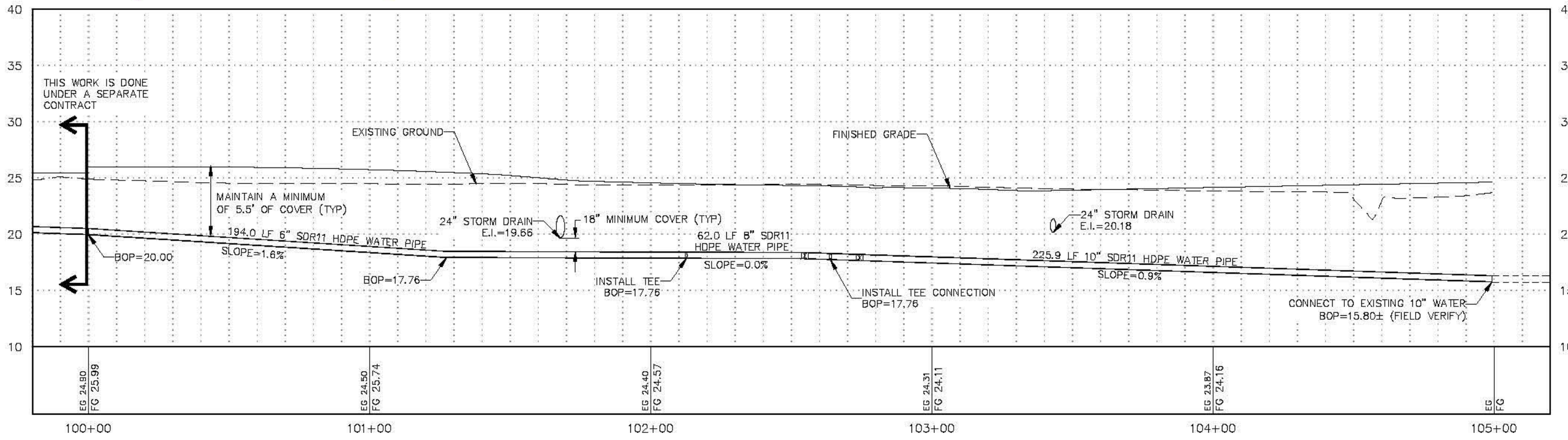


JUNEAU INTERNATIONAL AIRPORT
 JUNEAU, ALASKA
 RUNWAY SAFETY AREA IMPROVEMENTS - PHASE 2B
 CONTRACT NO. BE-17-045
 AIP No. 3-02-0133-XXX-2016
 NW STORM DRAIN LAYOUT PLAN

ATTACHMENT #4



- WATER NOTES:**
1. THRUST BLOCKS SHALL BE INSTALLED AT ALL WATER PIPE BENDS, TEES, VALVES, FIRE HYDRANTS, AND OTHER CHANGES IN DIRECTION. REFER TO CBJ STANDARD DETAILS 414A, 414B, 414C.
 2. WATER PIPE MINIMUM COVER IS 5.5'. FIELD ADJUST AS NEEDED TO MAINTAIN THE MINIMUM COVER.
 3. REFER TO SHEET 60 FOR UTILITY TRENCH DETAIL.



File: C:\Civil 3D Projects\23\62033-01\Aviation\Design\SA14-AV-PI-JUN-62033.dwg
 Script Title: DOWL File No. 232-89
 Designed By: G. WILT
 Checked By: B. HANSON
 Drawn By: C. SLATTEN

BY	DATE	REVISIONS

SCALE	
HORZ.	SCALE
VERT.	SEE GRAPHIC
W.O. NO.	1123.62033
FILE NO.	



PLAN PREPARED BY:

DOWL
#AECL848 www.dowl.com

4041 B Street
Anchorage, Alaska 99503
907-562-2000

DATE: 8/2/2016



JUNEAU INTERNATIONAL AIRPORT
JUNEAU, ALASKA
RUNWAY SAFETY AREA IMPROVEMENTS - PHASE 2B
CONTRACT NO. BE-17-045
AIP No. 3-02-0133-XXX-2016
NW WATER PLAN