

ATTACHMENT #2



MEMORANDUM

TO: Patty Wahto,
JNU Airport Manager

DATE: August 2, 2016

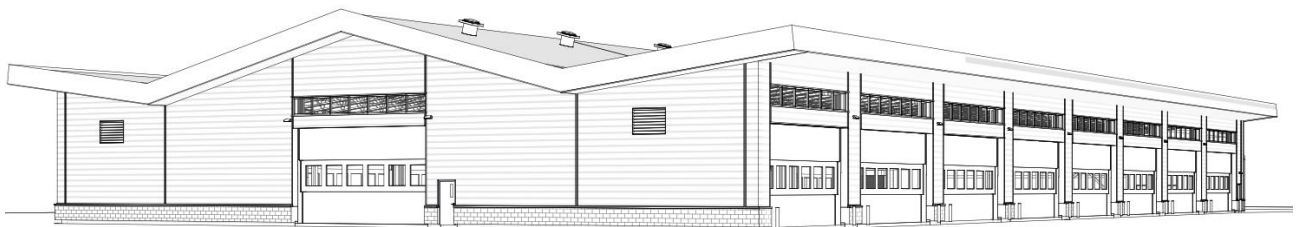
FROM: Catherine Fritz, AIA
JNU Airport Architect

RE: Architect's Report of July 2016 Activity

During July, two projects completed the bidding process: the Aircraft Rescue and Fire Fighting (ARFF) Building Modifications project and the Snow Removal Equipment Building, Phase 1-A (SREB) project. Bid summaries were presented to the Board at special meetings. The Aircraft Rescue and Firefighting (ARFF) Building Modifications: E16-146, was awarded to Dawson Construction Co., LLC, in the amount of \$1,810,000. The Snow Removal Equipment Building (SREB): BE16-254, was awarded to F & W Construction Co. Inc. in the amount of \$13,373,833. No protests were filed during the bid protest period.

Following the bid openings, FAA grant application documents were updated for each of these projects. Federal and local funding for both projects has now been appropriated through the CBJ Assembly. Contract award to Dawson Construction is expected soon, which will allow the project to begin. The contract award to F & W Construction for the SREB is expected to be issued in late August. State of Alaska match grants for these projects are also underway and once received, will be appropriated by the CBJ Assembly.

For both projects, the construction administration services will be done by a combination of Airport staff and consultants. The design teams will provide basic services that include submittal reviews, responses to Contractor questions/requests for information, attendance at progress meetings as needed, and providing on-site inspections for critical components. Special inspections as required by the building code will also be done by consultants. JNU projects office staff will conduct weekly progress meetings, document daily progress, coordinate Airport operational issues related to construction, approve pay requests, and work closely with consultants to provide all needed construction administration services. Preparing for the upcoming construction of both facilities involves tasks such as developing project budgets for the General Ledger, executing contracts for construction administration services, submitting FAA documentation, setting up files and project protocols, obtaining building permits, and conducting the pre-construction conference. The SREB also requires setting up a field office and preparing materials for the Dispute Resolution Board. It is a busy time that is critically important to the successful start of each construction project.



SREB perspective drawing by ECI Architects, from Southwest corner of building.

ATTACHMENT #2

Acceptance of the shop roof has been delayed due to cancellation of the manufacturer's scheduled inspection. The contract close-out (including final payment to the Contractor) will proceed after final acceptance.

Maintenance projects around the terminal during July included interior painting of Gate 2 stairwell and continued surplus and demolition of the old kitchen/dining areas.

Scoping document for installation of a new Passenger Boarding Bridge (PBB) at Gate 2 were developed during July. The concept is to extend a new PBB westward from the corner of the Departure Lounge, using the existing aircraft alignment at the gate. This potential project will have more detailed development (including a preliminary estimate of construction cost) during August.

The advertising Request for Proposals (RFP) resulted in the selection of Alaska Channel. This firm has advertising contracts at both Anchorage International Airport and Fairbanks International Airport. They have proposed some exciting concepts that integrate graphics of the natural beauty of the region with advertisement messages. The initial scoping meeting with the firm was held on July 28, 2016. Many of the existing advertising fixtures will be upgraded during the coming months, and a transition plan is being developed to ensure that existing advertising accounts are maintained.