

Juneau International Airport



**AIRPORT BOARD
OPERATIONS COMMITTEE MEETING
FEBRUARY 11, 2015**

Introductions

2

- Airport Staff
- Consultants
- Airport Board Operations Committee
- FAA

Runway Rehabilitation Overview

3

- Project Elements
- Timeline
- Project Phases
- Q & A

Project Elements

4

- Runway Pavement Rehabilitation
- Edge Light Replacement
- Centerline Light Replacement
- Jordan Creek Culvert Replacement
- Runway Guard Lights (Taxiway C and E)
- Drainage Improvements
- Temporary Facilities

Timeline

5

- Phase 1 Construction (Complete)
- Phase 2 (Part 1) Construction (March 2 – April 1)
- Phase 2 (Part 2) & Phase 3 Construction (April 1- June 30)
- Phase 4 Construction (July 1-August 15)

Impacts to Tenants

6

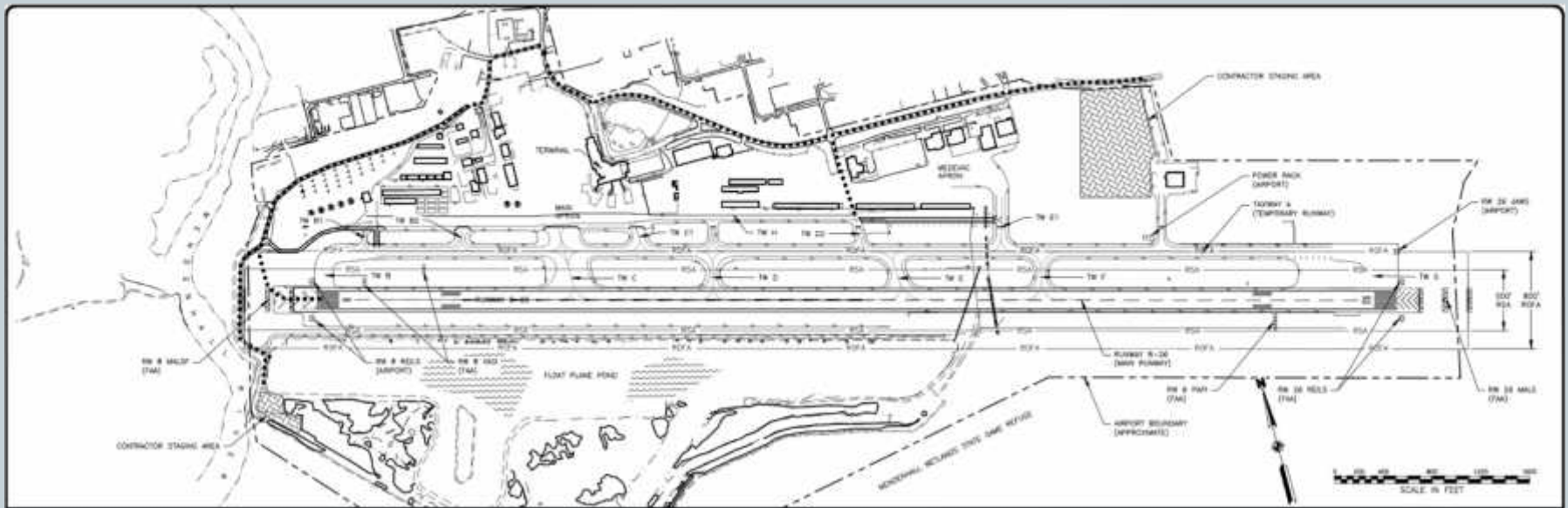
- Tie-Downs
- FBO Ramp
- Helicopters
- Temporary Travel Routes
- Construction Vehicle Access

Overview



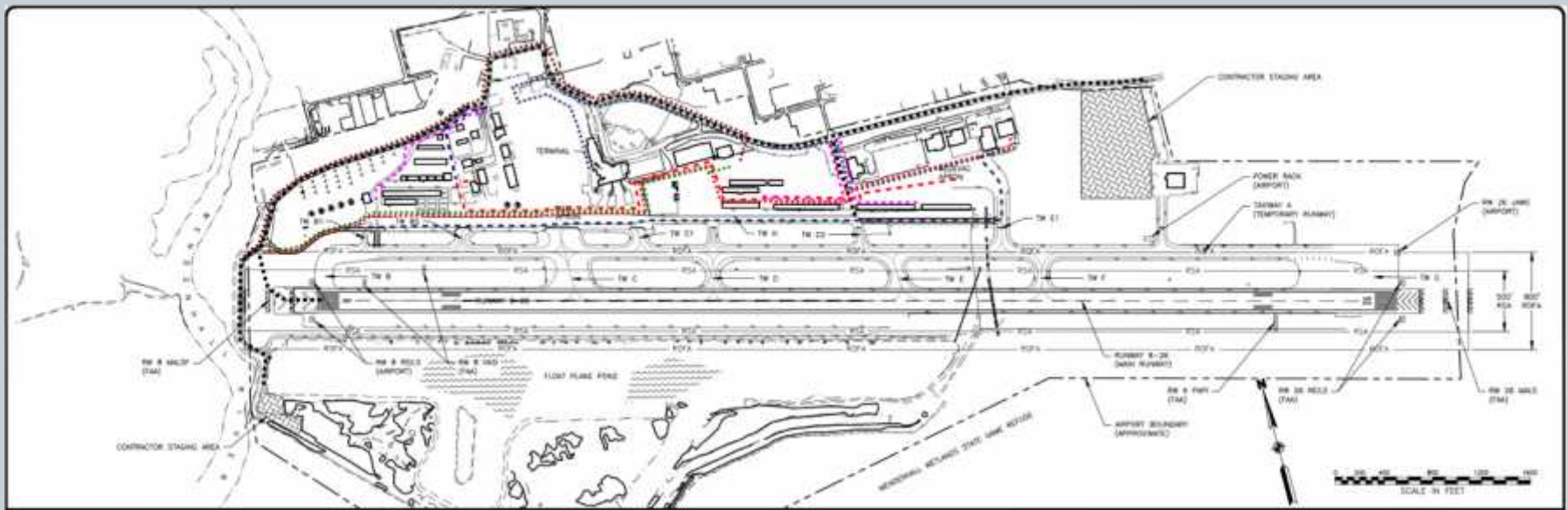
Safety Plan

8



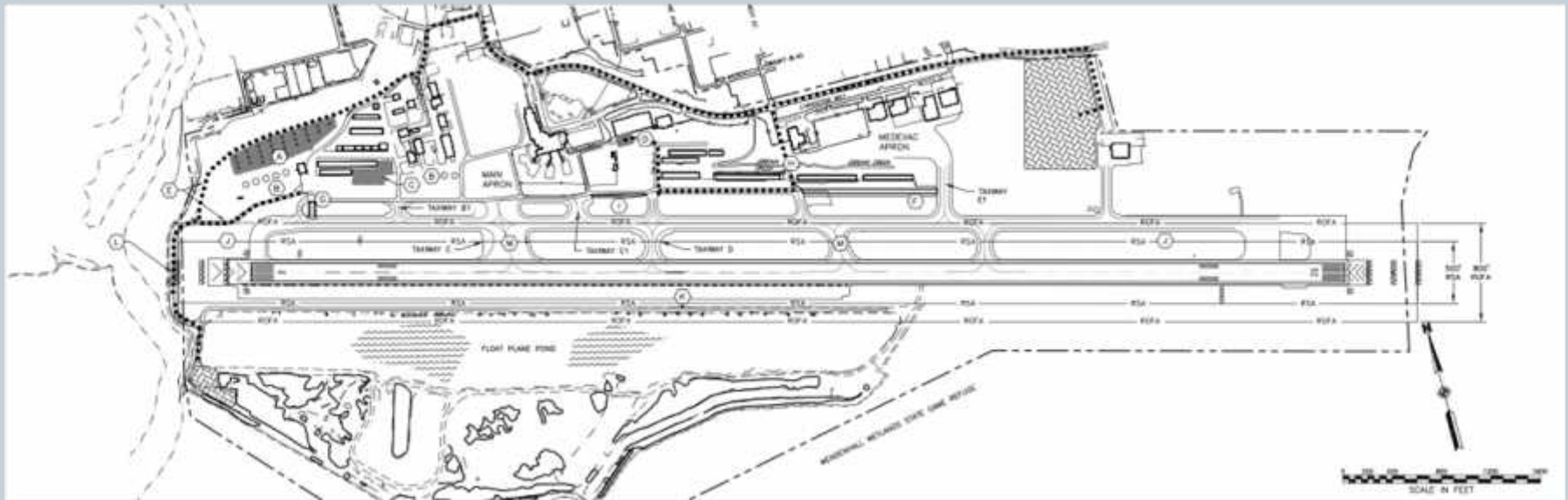
Ground Vehicle & Towed Aircraft

9



Phase 1

10



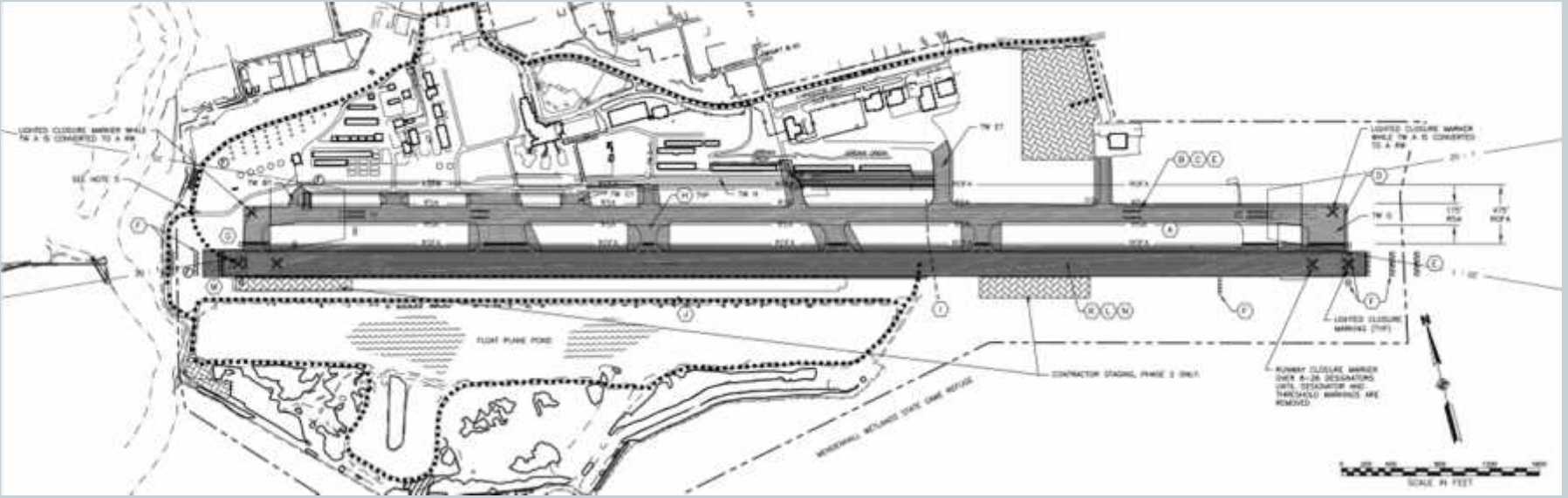
Phase 1

11

PHASE 1 CONSTRUCTION NOTES

- A RELOCATE GA PARKING
- B RELOCATE HELICOPTER OPERATIONS
- C PAVE AERO SERVICES PARKING
- D REPAIR PAVEMENT AT SAND STORAGE
- E CONSTRUCT NEW ACCESS ROAD AND REROUTE PORTION OF FLOAT POND ACCESS ROAD
- F EXTEND TAXIWAY H OVER JORDAN CREEK TO INTERSECT TAXIWAY E1
- G RELOCATE TAXIWAY B1
- H REPAIR ROAD AND GRADE ACCESS BEHIND HANGAR
- I WIDEN TAXIWAY H PAVEMENT
- J INSTALL FOUNDATIONS AND BURIED CONDUIT FOR TEMPORARY RW26 VASI, AND RW 8 LDIN
- K CONSTRUCT INFIELD DRAINAGE SOUTH OF RW 8/26
- L WIDEN FLOAT POND ACCESS ROAD
- M INSTALL GUARD LIGHTS ON TW C & E

Phase 2



Phase 2

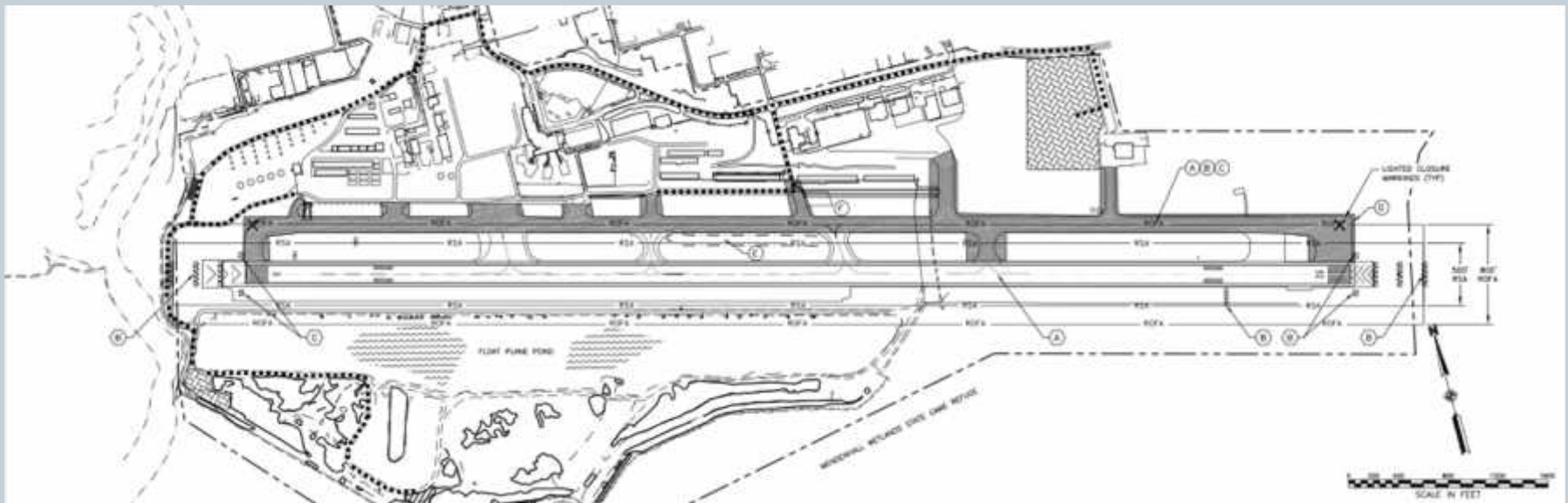
13

PHASE 2 CONSTRUCTION NOTES

- (A) COMPLETE INSTALLATION OF TEMPORARY RW 26 VASL AND RW 8 LEDS
- (B) INSTALL TEMPORARY RUNWAY EDGE AND THRESHOLD LIGHTS AND REELS
- (C) APPLY TEMPORARY RUNWAY MARKINGS
- (D) FAA TO LOWER AND REMOVE EAST JAWS EQUIPMENT FROM SERVICE
- (E) OPEN TEMPORARY RUNWAY / CLOSE MAIN RUNWAY 8-26
- (F) FAA TO REMOVE FROM SERVICE RW 8 MALSF, RW 26 MALS, RW 26 REL, AND RW 26 PAPI
- (G) AIRPORT TO SHUT DOWN RW 8 REELS
- (H) CLOSE TAXWAYS BETWEEN THE MAIN AND TEMPORARY RUNWAYS
- (I) REPLACE JORDAN CREEK CULVERT
- (J) CONSTRUCT INFIELD DRAINAGE CULVERT
- (K) REPLACE RUNWAY 8-26 EDGE, THRESHOLD, & CENTERLINE LIGHTING
- (L) REHABILITATE MAIN RUNWAY 8-26 PAVEMENT
- (M) REMOVE EXISTING PAVEMENT AND OVERLAY BLAST PAD
- (N) APPLY NEW RUNWAY MARKINGS

Phase 3 & 4

14



Phase 3

15

- F** PHASE 3 CONSTRUCTION NOTES
- A** OPEN MAIN RW 8-26 FOR OPERATIONS
- B** FMA TO RESTORE SERVICE TO RW 8 MALSF, RW 26 MALSL, RW 26 REL, AND RW 26 PAPT
- C** AIRPORT TO RESTORE RW 8 RELS

Phase 4

16

Ⓢ PHASE 4 CONSTRUCTION NOTES

- Ⓐ FAA TO REMOVE TEMPORARY WAARDS AND REELS FROM SERVICE
- Ⓑ USE PARTIAL CLOSURES OF TAXIWAY A TO REMOVE TEMPORARY RUNWAY MARKINGS AND REPAINT PERMANENT MARKINGS
- Ⓒ REPLACE TW A EDGE LIGHTING AND RETURN TO SERVICE
- Ⓓ FAA TO RESTORE EAST JWS SYSTEM
- Ⓔ REGRADE SOUTH DITCH
- Ⓕ INSTALL REMOTE PROCESSING UNIT 2

Wrap Up

17

- Other Items

Contact Info:

Ken Nichols

Airport Engineer

586-0453

ken.nichols@jnuairport.com