



## ATTACHMENT #2

TO: Patricia deLaBruere,  
JNU Airport Manager

DATE: June 2, 2014

FROM: Catherine Fritz, AIA  
JNU Airport Architect

### **Terminal Renovation.**

Food and beverage services at both *The Annex* café in the secure departure lounge, and *Cup o' Joe's* at the main entry are fully operating! Concession owner JDA has continued to expand its menu and refine procedures through the past few weeks. Minor facility and equipment enhancements were made in May to assist in making the concession successful.

Construction work began on the bar remodel in early May. The floor was raised over a portion of the former dining area to increase storage adjacent to the concession space. Plumbing and electrical work also began. The space will be modified to provide “grab and go” food service and will offer seating areas for both a bar and cafe. Once completed, *Cup o' Joe's* will be closed since espresso service will be part of the new café. The liquor license process for the new concession is underway and includes alcohol in both *The Annex* and *DJ's Tap Room* (new name for former bar). The goal is to have remodel completion coincide with license approval, currently estimated for mid-June.

Delta Air Lines' offices, baggage storage, and check in areas on the first floor of the terminal were completed on schedule and in accordance with approved plans. The new airport-owned casework at Gate 5 was installed to serve gate needs for both Delta Air Lines and Alaska Airlines.

For many years, Gate 6 has had ongoing water infiltration problems that have repeatedly damaged interior finishes. Several potential sources for the leaks have been identified and documents will be prepared to hire a contractor to try again to remedy the areas this summer. In the meantime, the interior surfaces have been repaired and painted by terminal maintenance staff so the gate can be used immediately for ground level aircraft access.

Additional miscellaneous terminal projects that occurred during May included removing the Munoz painting of Tlingit dancers (the painting is owned by CBJ and will be restored and displayed in another City facility), initiating the addition of an ATM machine in the departure lounge (it will be installed later this summer), and continuing the surplus process to sell unneeded restaurant equipment. The City's new surplus system will go into effect in June; the airport's equipment will be among the first to use the new online bidding system that is hoped to be more efficient.

Architectural staff began working on the next steps of terminal renovation planning. The scope was developed for the June 26, 2014 work session with the Airport Board (meeting as Committee of the Whole). The purpose of the work session is to review concepts for renovation of all terminal areas constructed prior to 1984 and identify possible funding options for the remaining work. Existing project funds are not sufficient to renovate all areas, but creating a clear roadmap of needs and priorities will allow existing funds to be spent most wisely, and will help articulate additional funding needs. Airport tenants and the general public are invited to participate in this meeting.

### **Snow Removal Equipment Facility.**

During May, project staff continued to reconcile project accounting to meet FAA requirements, and plan for multi-year AIP funding for construction.

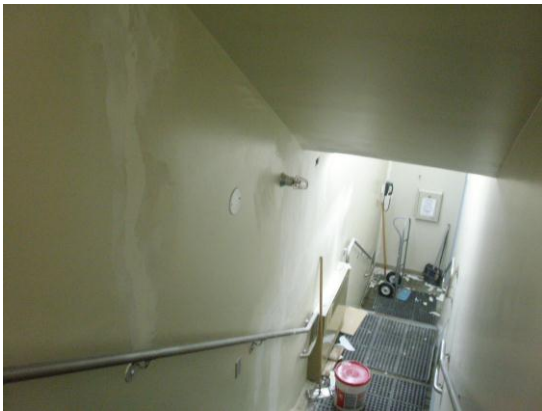
## ATTACHMENT #2



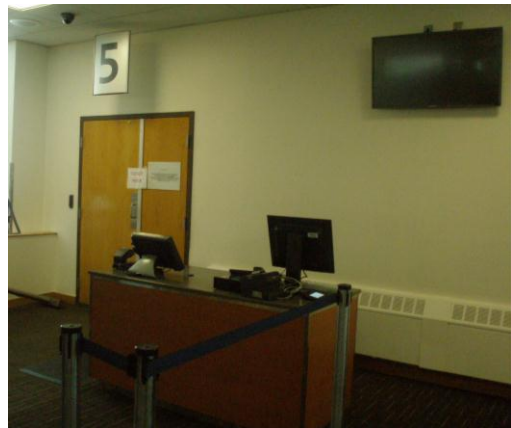
New raised floor for DJ's Tap Room (former bar).



New wall framing for DJ's Tap Room.



Gate 6 interior cosmetic repairs.



Gate 5 new casework.



Delta Air Lines check in area.