


Perspective

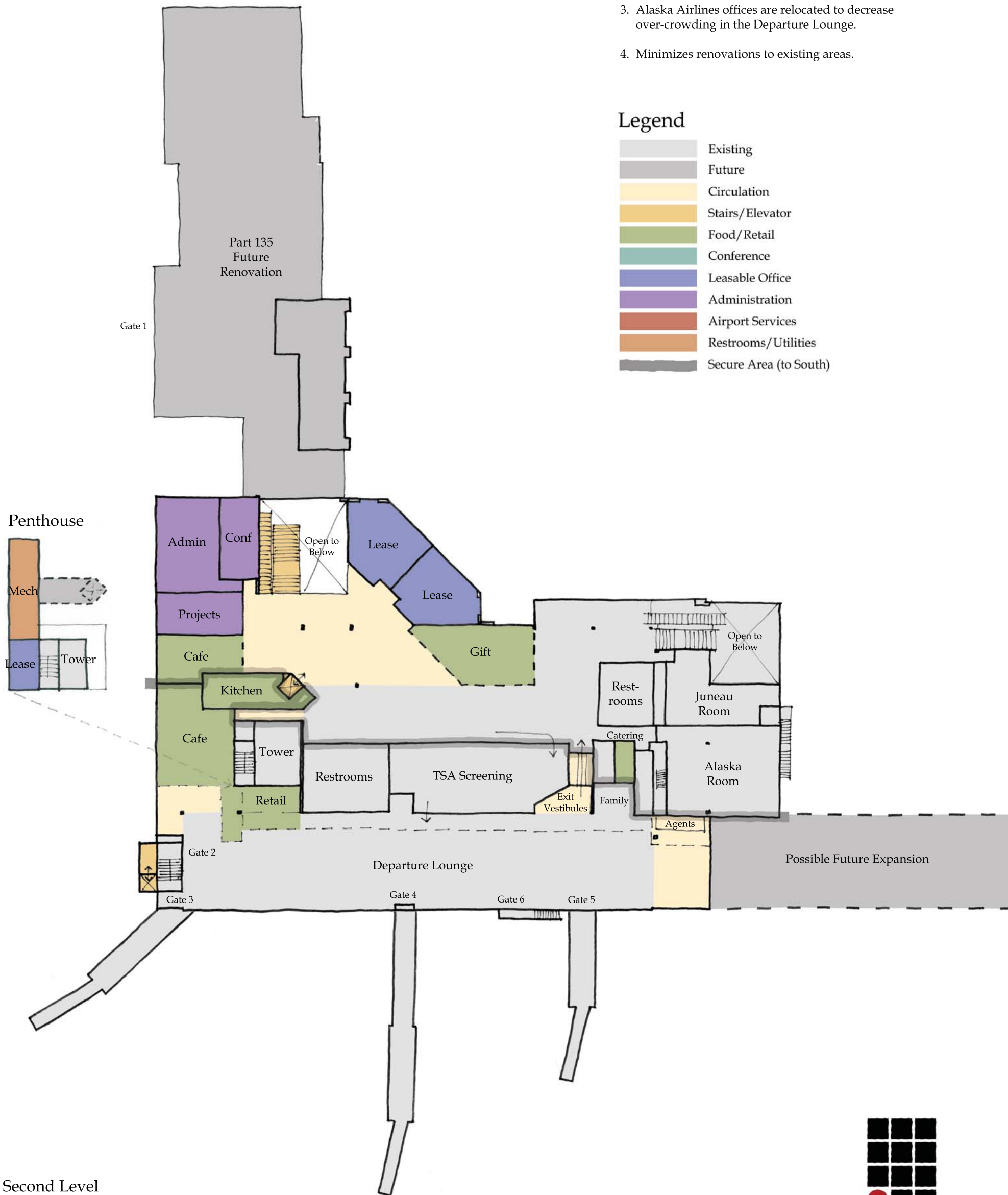
CONCEPTS 1 & 2
Juneau International Airport Renovation - Phase
February 27, 2014

Key Points

1. Food/Beverage/Concession placed on the west to provide direct views to the airfield and to minimize construction in existing areas.
2. A single kitchen serves both secure and non-secure side dining areas. It's located off of the exterior so as to not occupy window space and to provide greater future flexibility of the dining spaces.
3. Alaska Airlines offices are relocated to decrease over-crowding in the Departure Lounge.
4. Minimizes renovations to existing areas.

Legend

	Existing
	Future
	Circulation
	Stairs/Elevator
	Food/Retail
	Conference
	Leasable Office
	Administration
	Airport Services
	Restrooms/Utilities
	Secure Area (to South)



Second Level

CONCEPT 1 - WEST RESTAURANT Juneau International Airport Renovation - Phase II

February 27, 2014



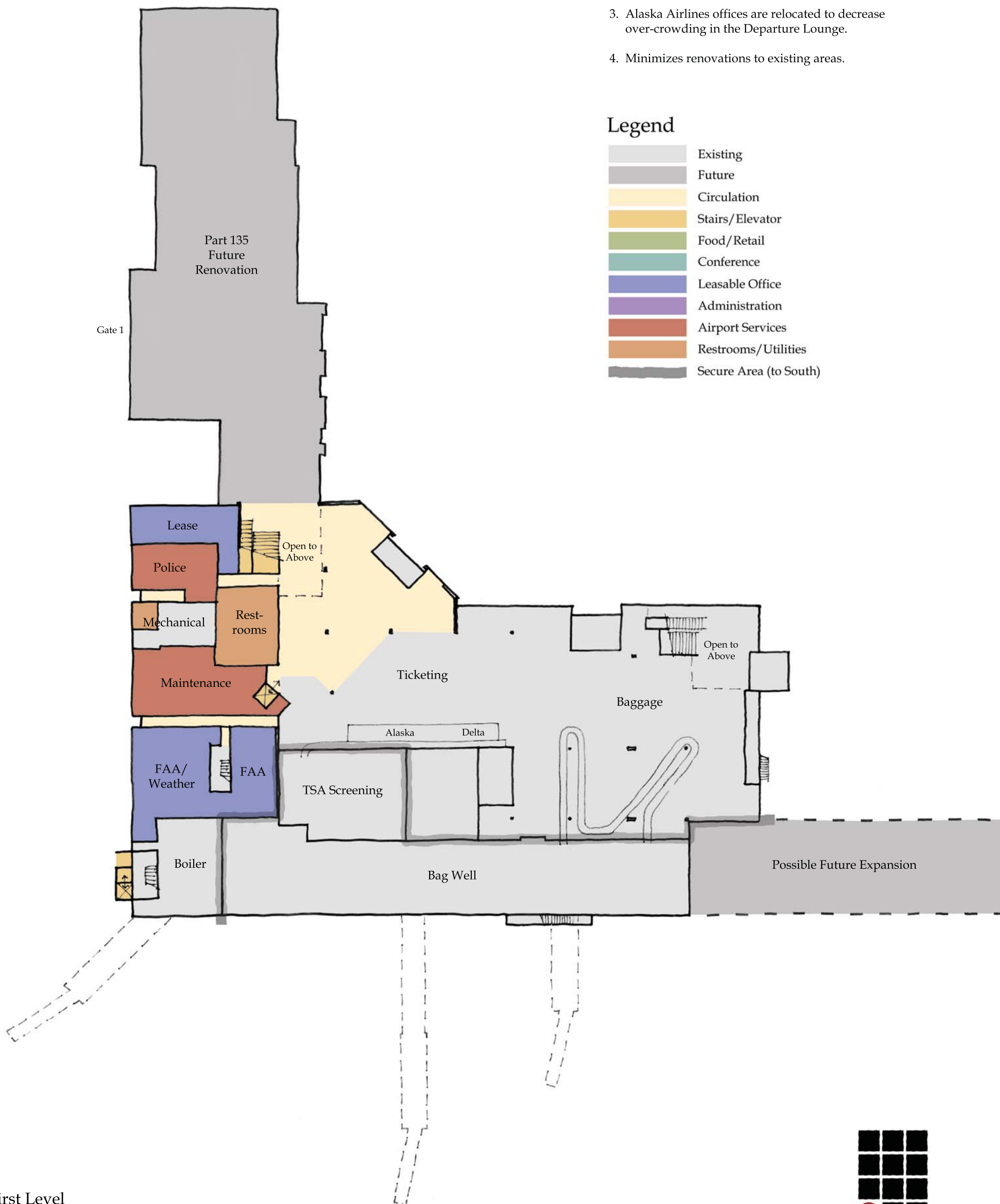
522 West 10th Street
Juneau, Alaska 99801
phone 907-586-1070
fax 907-586-3959
jensenyorbalott.com

Key Points

1. Food/Beverage/Concession placed on the west to provide direct views to the airfield and to minimize construction in existing areas.
2. A single kitchen serves both secure and non-secure side dining areas. It's located off of the exterior so as to not occupy window space and to provide greater future flexibility of the dining spaces.
3. Alaska Airlines offices are relocated to decrease over-crowding in the Departure Lounge.
4. Minimizes renovations to existing areas.

Legend

	Existing
	Future
	Circulation
	Stairs/Elevator
	Food/Retail
	Conference
	Leasable Office
	Administration
	Airport Services
	Restrooms/Utilities
	Secure Area (to South)



First Level

CONCEPT 1 - WEST RESTAURANT
 Juneau International Airport Renovation - Phase II
 February 27, 2014



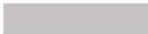


**Jensen
Yorba
Lott
Inc.**

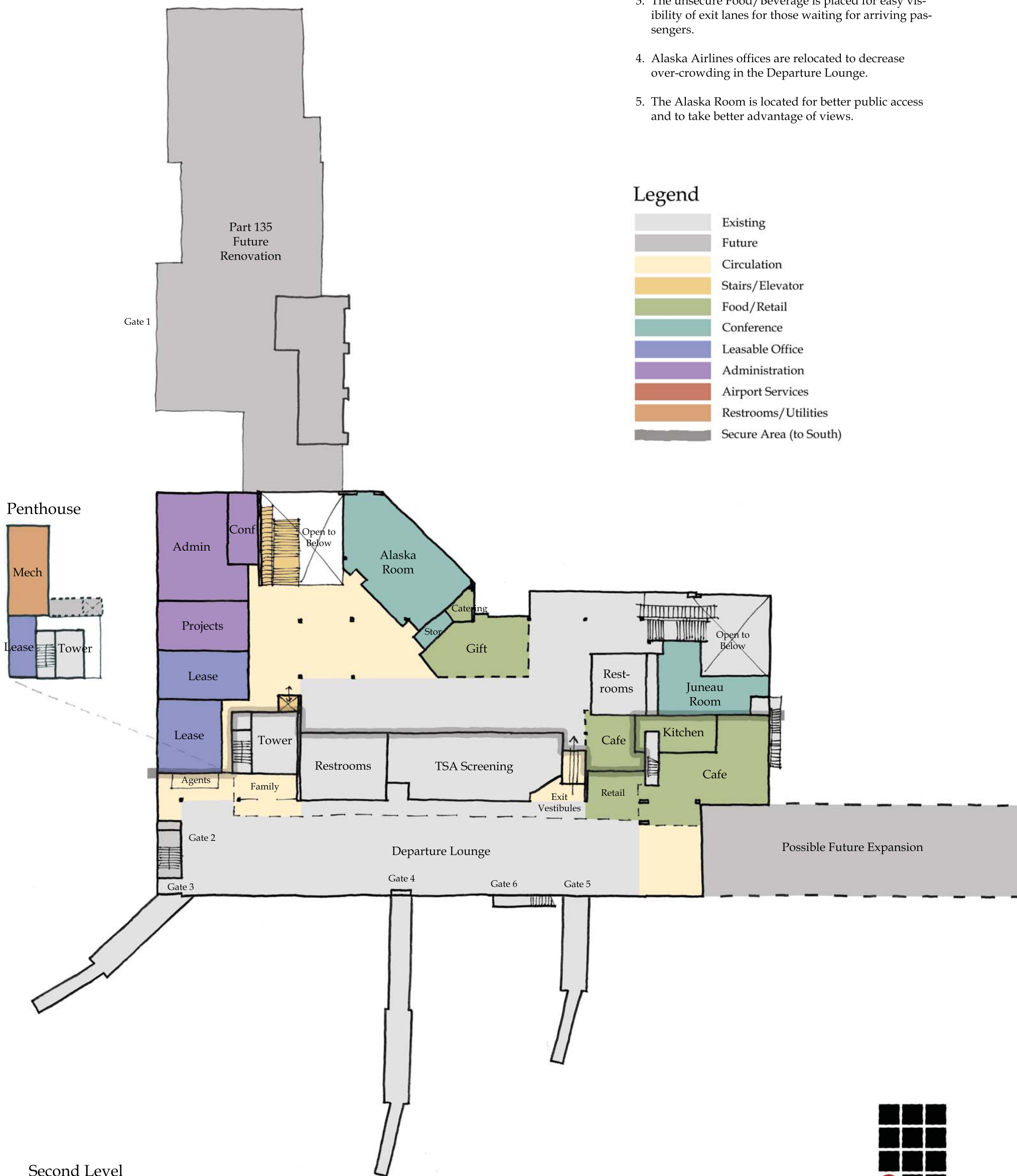
522 West 10th Street
 Juneau, Alaska 99801
 phone 907-586-1070
 fax 907-586-3959
 jensenyorbaltott.com

Key Points

1. Food/Beverage/Concession placed on the east to provide a central location for when Departure Lounge is expanded in the future. The dining area takes advantage of the current Alaska Room views.
2. A single kitchen serves both secure and non-secure side dining areas.
3. The unsecure Food/Beverage is placed for easy visibility of exit lanes for those waiting for arriving passengers.
4. Alaska Airlines offices are relocated to decrease over-crowding in the Departure Lounge.
5. The Alaska Room is located for better public access and to take better advantage of views.

Legend

	Existing
	Future
	Circulation
	Stairs/Elevator
	Food/Retail
	Conference
	Leasable Office
	Administration
	Airport Services
	Restrooms/Utilities
	Secure Area (to South)



Second Level

CONCEPT 2 - EAST RESTAURANT Juneau International Airport Renovation - Phase II

February 27, 2014



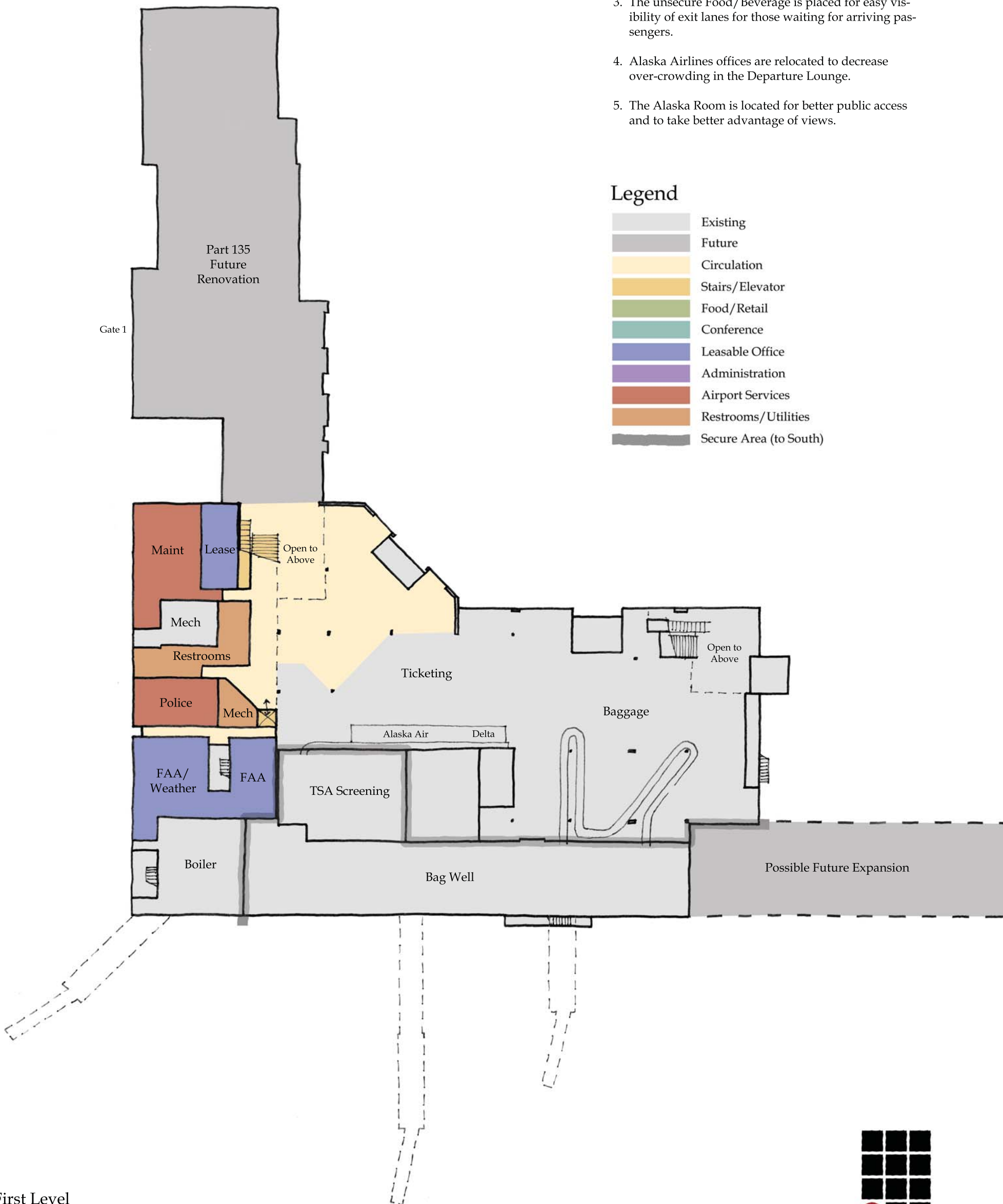
522 West 10th Street
Juneau, Alaska 99801
phone 907-586-1070
fax 907-586-3959
jensenyorbaltott.com

Key Points

1. Food/Beverage/Concession placed on the east to provide a central location for when Departure Lounge is expanded in the future. The dining area takes advantage of the current Alaska Room views.
2. A single kitchen serves both secure and non-secure side dining areas.
3. The unsecure Food/Beverage is placed for easy visibility of exit lanes for those waiting for arriving passengers.
4. Alaska Airlines offices are relocated to decrease over-crowding in the Departure Lounge.
5. The Alaska Room is located for better public access and to take better advantage of views.

Legend

	Existing
	Future
	Circulation
	Stairs/Elevator
	Food/Retail
	Conference
	Leasable Office
	Administration
	Airport Services
	Restrooms/Utilities
	Secure Area (to South)



First Level

CONCEPT 2 - EAST RESTAURANT
 Juneau International Airport Renovation - Phase II
 February 27, 2014



522 West 10th Street
 Juneau, Alaska 99801
 phone 907-586-1070
 fax 907-586-3959
 jensenyorbaltott.com