

TO: Jeannie Johnson,  
JNU Airport Manager

DATE: April 4, 2012

FROM: Catherine Fritz, AIA  
JNU Airport Architect

FILE: 1382.16

RE: Terminal Renovation Project Update  
Snow Removal Equipment Facility Project Update

**Terminal Renovation.**

Work continues on the Main Entry Renovation. Demolition of the front façade, including the deck, is complete. Primary steel is erected and now being structurally connected back to the main building. Materials have been ordered and subcontractors are preparing to begin their trades.

Other projects in the terminal include renovation of the Gift Shop, scheduled to begin next week. The work is carefully sequenced to ensure that operations can be maintained. Renovation of one of the North Wing vestibules is now complete, and the other two vestibules will be complete later in April. Construction of the Departure Lounge coffee shop began in March, and will be complete by the end of April.

The new art display cases for the Departure Lounge are complete and currently being installed. The first exhibit will be work of art students of the University of Alaska Southeast. This is expected to open in mid-April. A second temporary exhibit with the USDA Forest Service is underway. It will consist of banners to display the Tongass Forest. These will be located as a temporary exhibit on the first floor.

In our continuing efforts to increase visibility and community pride in the Airport, we recently began a public service announcement program through our digital advertising media. The Airport will incorporate a "Welcome to Juneau" message for community events such as the upcoming Alaska Folk Festival and Jazz & Classics Festival that will run intermittently between paid advertisements for a few days per event. There will also be live music in the terminal during these annual Spring events. We expect to host events and share the welcome messages about once per month, throughout the year.

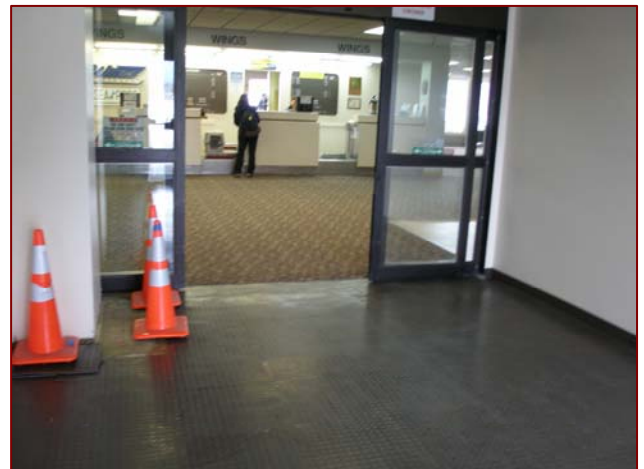
The Airport hosted a tour of our geothermal system to the American Water Resources Association on March 8, 2012. Thanks to geothermal design engineer, Doug Murray for making the presentation.

**Snow Removal Equipment Facility.**

The SREF construction documents are 99% complete. The project will be sent to the cost estimator next week, with final adjustment occurring thereafter. The Airport will receive the final documents at the end of April 2012. The next steps will be to prepare bid condition requirements, and secure project funding.



Primary steel is installed on the front facade.



New flooring and walls in North Vestibule.