

TO: Jeannie Johnson,
JNU Airport Manager

DATE: March 1, 2012

FROM: Catherine Fritz, AIA
JNU Airport Architect

FILE: 1382.16

RE: Terminal Renovation Project Update
Snow Removal Equipment Facility Project Update

Terminal Renovation.

Main Entry Renovation began in February. The General Contractor's company, McGraw's Custom Construction, was recently purchased by Arctic Slope Regional Corporation. The management and staff of our project remained the same; the project has not been impacted by this corporate change.

Demolition is proceeding well, and the Contractor has taken careful measures to minimize disruption to operations and tenants. Much of the concrete removal has been done at night so that noise, fumes, and dust could be contained.

Design for Gift Shop renovation is nearly complete, and Airport staff is working closely with the Gift Shop owners to determine a schedule and sequence of work that will allow them to remain in operation throughout construction period.

Staff has continued to work on the new art display cases for the Departure Lounge. The first exhibit is expected to be set up in March. We are also working with the Alaska Miners Association to develop a compatible design for a permanent mineral exhibit. The City Museum staff has also been very helpful in this effort. The goal is to have this display complete by early June.

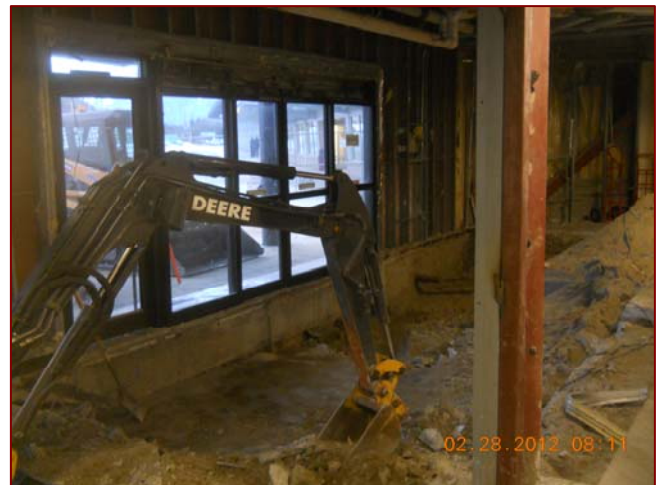
Staff has completed design for a coffee shop in the Departure Lounge. The space is designed to be efficient and aesthetically pleasing, but with modest construction costs. Staff will install the new casework, and is shopping for used equipment to outfit the operation.

Snow Removal Equipment Facility.

Production of construction documents for the SREF continues. The Sitework Infrastructure project is being prepared for Spring 2012 bidding. The AIP funding request was submitted to FAA in February, and staff continues to provide information and support for securing state funding for the project.



Thunder Mountain Big Band entertains travelers on Feb 20, 2012.



Demolition is underway at the Main Entry.