



## ATTACHMENT #2

TO: Jeannie Johnson,  
JNU Airport Manager

DATE: February 2, 2012

FROM: Catherine Fritz, AIA  
JNU Airport Architect

FILE: 1382.16

RE: Terminal Renovation Project Update  
Snow Removal Equipment Facility Project Update

### **Terminal Renovation.**

During January, the Contractor continued to order materials and prepare for the start of work on the Main Entry Renovation. Airport tenants and the general public have been notified that demolition will begin on February 6, 2012. Weekly progress meetings with the Contractor have begun to ensure that work proceeds with least disruption possible to airport operations.

Airport staff constructed a temporary coffee shop space that will allow Cup of Joe's to operate until the end of May, 2012. At the completion of the Entry Renovation, they will return to their current location. The Laptop Lounge was relocated north of the adjacent vestibule to allow the former area to be consolidated into the gift shop space. This will compensate for lost gift shop area due to the Main Entry Renovation. The gift shop owners worked with airport staff to develop a new scheme for the renovated space. We will be able to maintain gift shop operations throughout the construction period.

Repairs to the exterior door vestibules continue. Parts from the Main Entry doors will be salvaged and reused in the north vestibules. Work on the vestibules is expected to be complete later in February.

Installation of the "Whale Plane" by local artist, Pat Race was completed in the secure Departure Lounge on February 1, 2012. Display cases that were designed and constructed locally for temporary art exhibits in the Departure Lounge are nearly complete, and staff is working on the first exhibit, which is expected to be a collection of 3-D art from local high school and university students.

On January 27<sup>th</sup>, staff provided testimony to the Alaska Legislature's House Resources Committee about the performance of the geothermal heat pump system. The committee was pleased to hear of the airport's success in reducing direct energy costs by approximately \$115,000 per year. The final version of the pre-1984 energy audit was received in January, too. It is clear that the overall terminal energy costs would reduce significantly if the old portions of the terminal could be replaced.

Design architects from HNTB joined local JYL architects from January 11- 18 to study the options for replacing the pre-1984 portions of the terminal. Following the Board's public review of three possible options, a single plan (shown below) was developed that incorporates current needs and provides flexibility for future terminal needs. This will be presented to the CBJ Public Works & Facilities Committee on February 6<sup>th</sup> for consideration of sales tax funding on the October 2012 ballot.

### **Snow Removal Equipment Facility.**

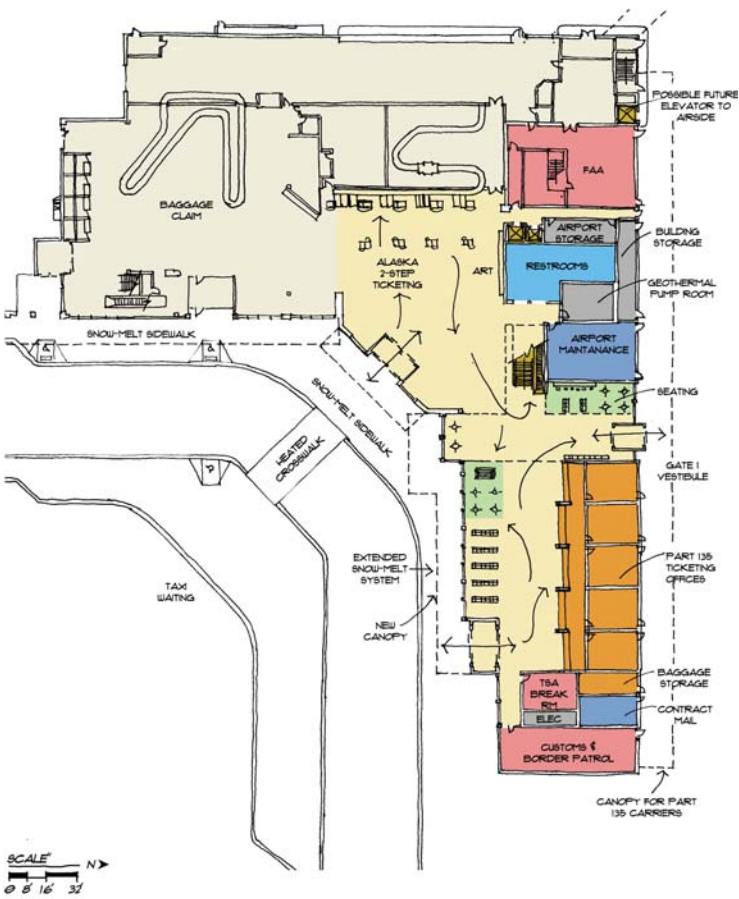
Production of construction documents for the SREF continues. Adjustments were made on the Sitework Infrastructure project to align with completion dates for the RSA project. The Site Infrastructure project is expected to begin advertisement for bids in February.



Temp Coffee shop in Lobby area.



Laptop Lounge relocation in North Wing.



PHASE II TERMINAL PLAN - FIRST LEVEL



PHASE II TERMINAL PLAN - SECOND LEVEL

