

## ATTACHMENT #2



To: Jeannie Johnson, JNU Manager October 5, 2011  
From: Thomas G. Carson, JNU Engineer File: 1603.13  
Re: JNU RSA Improvements Project Update

### Construction over the past month:

- AIC operated the dredge two shifts per day during September, pumping embankment to the NE Development Area. The dredge was down for repairs September 20 through 23. During September, 32,382 CY of borrow was dredged. AIC also hauled borrow from the stockpile at the west end of the Project to the West RSA and from the stockpiles at the NE Development Area to fill over various low areas. Based on a recent pond survey, about 760,000 CY have now been removed from the pond (97% of plan quantity). Various changes to the project will probably result in something in excess of 800,000 CY being removed from the pond.
- The water elevation of the Pond on September 1 was 16'-6" and on September 30 was 16'-8". AIC pumped make-up water from the Mendenhall River into the pond for 2 days this month.
- AIC finished surface details for the concrete loading platforms. They still have to install the timber face on the Ward Air 30' platform.
- AIC performed clearing and grubbing and prepared grade for the fencing contractor.
- AIC installed new base course in preparation for paving along the west end of the pond.
- AIC backfilled over the main header piping for the Ground Loop Horizontal Piping (GLHP) system at the NE Development Area.
- AIC continued working on rock reinforcement along the perimeter of the east and south RSA.
- AIC worked on the west end storm drainage system, installing the third storm drain manhole.
- AIC completed detail work on the mouth of Duck Creek.
- AAA Fencing installed fencing around the west end of the airport and placed posts along the EVAR, south of the West and East Fingers.
- North Pacific Erectors installed the H-piles for the Trash Rack associated with the fencing that crosses Duck Creek.

### Permitting and coordination activities:

- JNU staff continued working with FAA's design team for 08 and 26 MALSR.
- JNU staff continued coordinating with DOWL's Phase 2 design team.

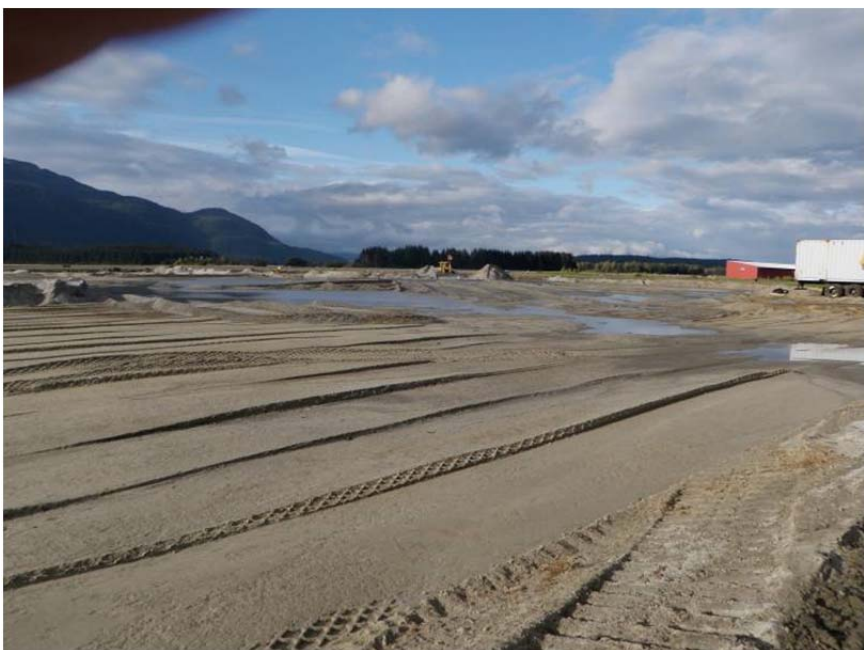
As of the end of September, AIC had earned \$28,568,671, representing 99.9% of the original \$28.6 million contract (89.2% if change orders are included). Twenty change orders have been authorized to date, resulting in a \$3,402,991 increase to the original award amount (an increase of 11.89%), bringing the contract total to \$32,023,782. Change orders to date have authorized side-slope improvements around the pond, gangway assemblies, loading platforms, and relocation of the East Runway Slough. To date, 54 days have been added to the contract deadline, which is now February 24, 2012.



**New 8' security fencing along west end of airport (paralleling the EVAR).**



**Edge of RSA along south side of airport, complete with 2" crushed rock along edge to control erosion during rain events.**



**Compacted embankment over GLHP Loopfield (NE Development Area).**