



ATTACHMENT #3

TO: Jeannie Johnson,
JNU Airport Manager

DATE: May 5, 2010

FROM: Catherine Fritz, AIA
JNU Airport Architect

FILE: 1382.16

RE: Terminal Renovation Project Update

Terminal Renovation: The project continues to move ahead with intensity as many areas are being completed and turned over to the airport for use. Two significant impacts on terminal operations occurred this month. The first was closing TSA Bag Screening Room and the second was closing of the secure exit lane from the Departure Lounge. The Bag Screening closure moved the TSA screening to a manual system out in the lobby area. While this has been a slower process for departing travelers, it has allowed TSA to function without construction interruptions. Thanks to the local TSA office for their “can do” attitude and for bringing on additional staff as needed to keep the bag screening operation going as quickly as possible. Work in the Bag Screening room is expected to be complete by May 11, 2010.

The old exit lane was closed to allow demolition to occur on the second floor. New toilet rooms are being laid out in this area. A temporary exit lane is being staffed by JNU personnel that are employed as temporary workers (funded from the project).

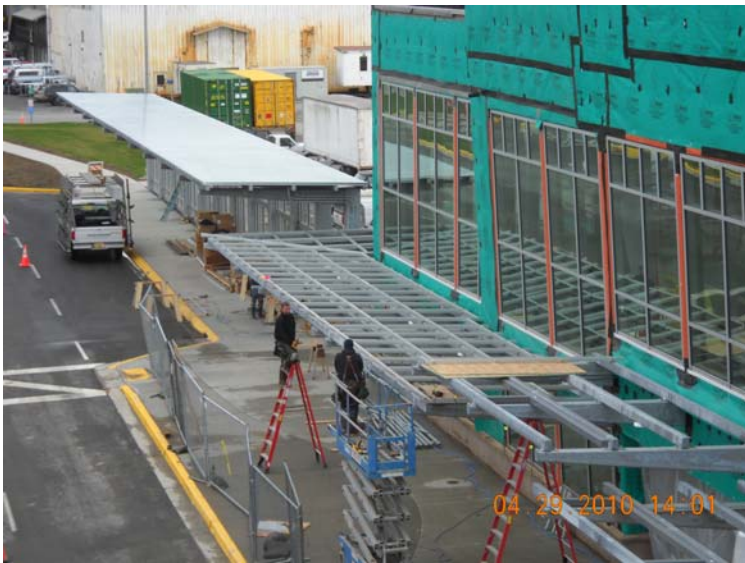
Highlights of work completed in the past month include:

- New toilet rooms on non-secure side, second floor, were opened to the public.
- Old mechanical room was demolished.
- Exterior wall glazing is 95% complete.
- Aluminum support framing for glass canopy is 90% complete.
- Slate tile and terrazzo floor tile installation has resumed.
- TSA Baggage Screening Room is 90% complete.
- Second floor plaster ceiling was completed.
- JCVB area is 98% complete and will be ready for occupancy by May 8th.
- Concrete Masonry Unit work is complete.
- Completion of bus canopy sidewalks to allow tour bus use beginning May 15th.

Looking ahead to the next few weeks, the new gathering area is expected to open, as well as the new ‘down-direction’ escalator. The new vestibules will soon be complete, allowing arriving passengers to cross directly over to the short term parking lot. Overall project remains on-schedule, with completion expected in October 2010. Approximately 75% of the construction contract has been paid to McGraw’s Custom Construction to date.

Status of related projects outside of the current construction project:

- The Younger Agency was selected for the new advertising concession. A design workshop will be held soon to review specific advertising displays, fixtures, etc.
- The art panel approved the artists’ concept for the bird sculpture, and final design work is now underway. Fabrication and installation of the sculpture is expected at the end of summer 2010.



Installing aluminum framing for glass canopy.



Slate tile installation near escalator.



Core drilling for new plumbing lines.



Temporary exit from secure Departure Lounge.



Temporary TSA bag screening.