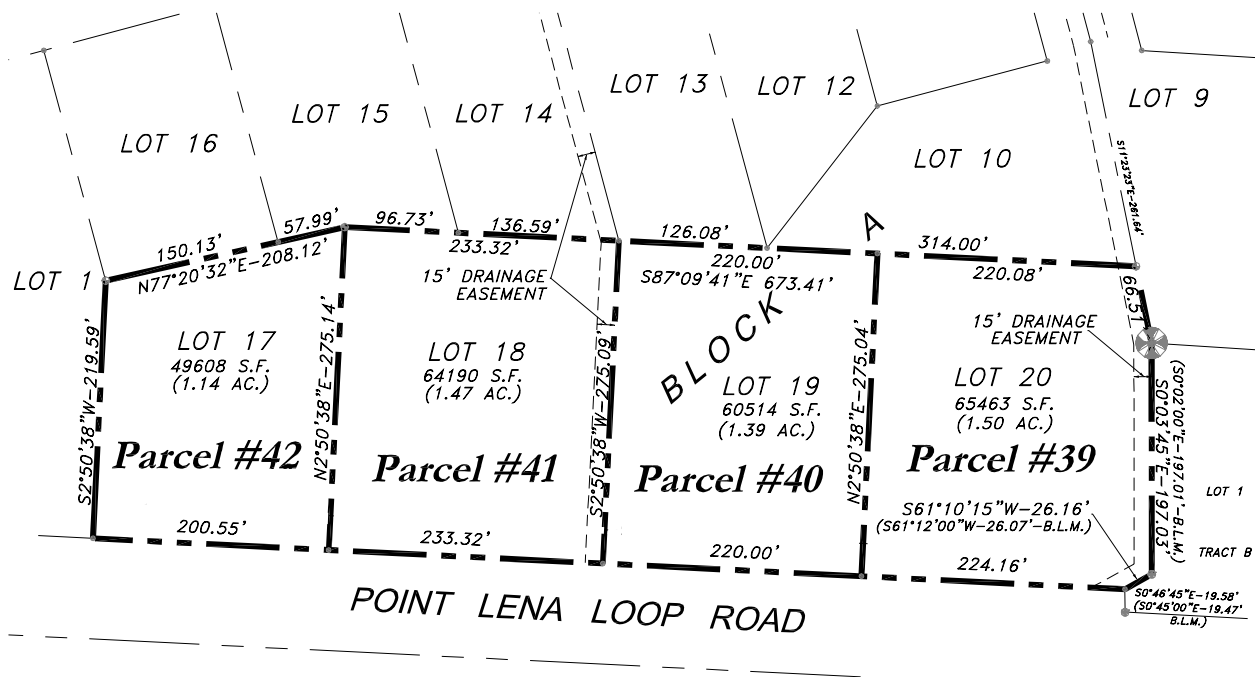


# Parcels #39 - #42

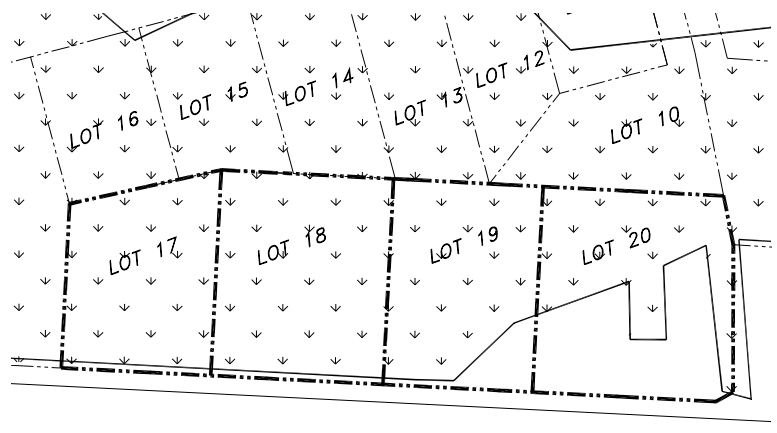
## Vicinity Map



## Parcel Detail



## Wetlands



***Parcel #39***      **Minimum Bid: \$169,000**

**Legal Description:** Lot 20, Block A, South Lena Subdivision      **Acreage:** 65,463 square feet

**Wetlands:** The Army Corps of Engineers has permitted the filling of 4,486 square feet of wetlands.

**Special Conditions:** Special conditions **D** and **I** apply to this lot. See page 7 for descriptions of those conditions.

***Parcel #40***      **Minimum Bid: \$150,000**

**Legal Description:** Lot 19, Block A, South Lena Subdivision      **Acreage:** 60,514 square feet

**Wetlands:** The Army Corps of Engineers has permitted the filling of 11,843 square feet of wetlands.

**Special Conditions:** Special condition **D** applies to this lot. See page 7 for a description of that condition.

***Parcel #41***      **Minimum Bid: \$137,000**

**Legal Description:** Lot 18, Block A, South Lena Subdivision      **Acreage:** 64,190 square feet

**Wetlands:** Wetlands are located throughout this lot. The Army Corps of Engineers has permitted the filling of 14,475 square feet of wetlands.

**Special Conditions:** Special conditions **D** and **I** apply to this lot. See page 7 for descriptions of those conditions.

***Parcel #42***      **Minimum Bid: \$106,000**

**Legal Description:** Lot 17, Block A, South Lena Subdivision      **Acreage:** 49,608 square feet

**Wetlands:** Wetlands are located throughout this lot. The Army Corps of Engineers has permitted the filling of 14,400 square feet of wetlands.

**Special Conditions:** Special condition **D** applies to this lot. See page 7 for a description of that condition.