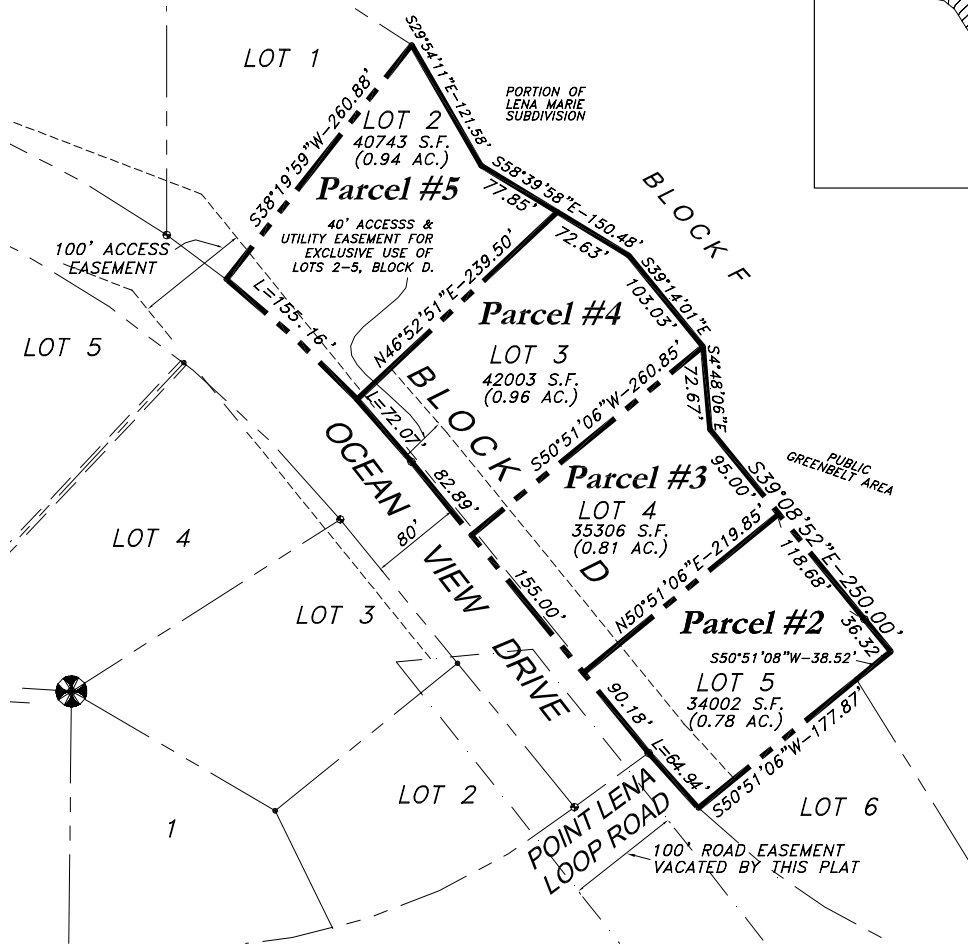


Parcels #2 - #5

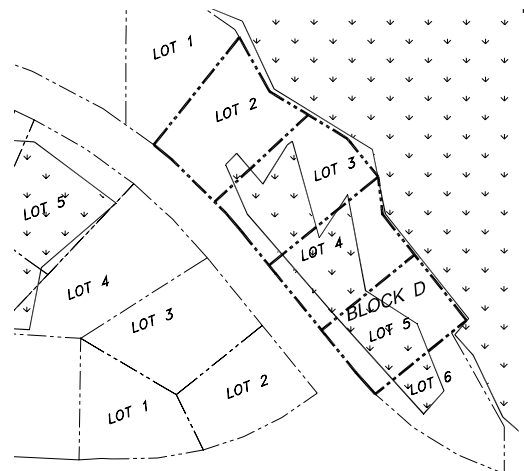
Vicinity Map



Parcel Detail



Wetlands



Parcel #2 **Minimum Bid: \$46,000**

Legal Description: Lot 5, Block D, South Lena Subdivision **Acreage:** 34,002 square feet

Wetlands: The Army Corps of Engineers has permitted the filling of 6,934 square feet of wetlands.

Special Conditions: Special condition **A** applies to this lot. See page 7 for a description of that condition.

Parcel #3 **Minimum Bid: \$48,000**

Legal Description: Lot 4, Block D, South Lena Subdivision **Acreage:** 35,306 square feet

Wetlands: The Army Corps of Engineers has permitted the filling of 8,768 square feet of wetlands.

Special Conditions: Special conditions **A and B** apply to this lot. See page 7 for descriptions of those conditions.

Parcel #4 **Minimum Bid: \$57,000**

Legal Description: Lot 3, Block D, South Lena Subdivision **Acreage:** 42,003 square feet

Wetlands: The Army Corps of Engineers has permitted the filling of 3,749 square feet of wetlands.

Special Conditions: Special conditions **A and B** apply to this lot. See page 7 for descriptions of those conditions.

Parcel #5 **Minimum Bid: \$95,000**

Legal Description: Lot 2, Block D, South Lena Subdivision **Acreage:** 40,743 square feet

Wetlands: Most of this lot has been identified as uplands and all fill activities are restricted to the uplands portion of the lot. A purchaser who wants to fill the small portion of this lot that is identified as wetlands must first obtain a permit from the Army Corps of Engineers.

Special Conditions: Special conditions **A and B** apply to this lot. See page 7 for descriptions of those conditions.