

**JUNEAU-DOUGLAS CITY MUSEUM**  
155 SOUTH SEWARD STREET  
JUNEAU, AK 99801  
(907) 586-3572 FAX:(907) 586-3203  
JANE\_LINDSEY@CI.JUNEAU.AK.US

## Memo

October 7, 2008

page 1 of 5

To: City & Borough of Juneau, Manager's Office

Thru: Marc Matsil, Parks & Recreation Director

Sheila Fisher, Recreation Superintendent

From: Jane Lindsey, Director, Juneau-Douglas City Museum

**RE: Juneau-Douglas City Museum Marine Passenger Fee Request: Exterior Site Upgrade**

The Juneau-Douglas City Museum resides in a historic community building with National Register recognition located across the street from Alaska's Capitol. It receives its heaviest visitation during summer months (May – September) when it operates seven days a week in order to welcome and educate summer visitors about Alaska's Capital City. Average summer visitation to the Museum is 15,000-17,000, with many more visitors walking up to the corner of 4<sup>th</sup> and Main to view and take photos of the Four-story totem pole, the Capitol, and walk on to the Governor's mansion. Of our summer visitation, about 3200 or 1/5 of our visitors enter the facility primarily to use the restrooms, and/or ask for visitor information, brochures and directions. The Museum is an important, full-functioning and well-utilized tourism destination in Juneau.

The facility and its grounds are pleasant and well-situated but lack dedicated parking, except for occasionally available 30-minute general street parking. This is a significant disadvantage, affecting visitors, staff, and the Museum's volunteer work force. The temporary turn-out on the west side of the building is inadequate for full-sized tour and school buses. An exterior site upgrade would allow for the turnout to be widened with little impact to the grounds. Expanding the temporary drop-off zone so it is large enough to serve full-sized buses is seen as crucial to expanding the Museum's effectiveness.

In FY2007 (C3) RFP E07-133 Request for Proposals was issued by the CBJ Engineering Department for *Planning, Design, and Construction Administration Service for the Juneau-Douglas City Museum Remodel*. MRV Architects was awarded the RFP in early 2007 to assist the City and Borough of Juneau to analyze needs and propose improvements to the Museum. The MRV design team included LORD Cultural Resources for museum planning expertise, Murray and Associates for mechanical engineering, Alaska Cultural Resources for museum operational issues, and Gorman Engineers for electrical engineering. HMS, Inc. provided professional cost estimating. The project extended through schematic design, with the goal of identifying building deficiencies, setting implementation priorities, and estimating upgrades costs.

Primary issues identified:

- Building overheating and lack of ventilation
- Space deficiencies for collections storage
- Space limitations for permanent exhibits and temporary gallery
- Lighting problems
- **Lack of parking and limited street presence or "draw"**

I would like to request passenger fee funds to be used to expand the temporary drop-off zone to serve full-sized buses and create a more attractive approach to visitors which will identify the building as a

museum. Increasing street visibility will welcome visitation. The museum enjoys a very prominent and historically significant site. While the site has advantages, it has several limitations which can be mitigated by exterior site improvements. Another limitation is that the main entry is confusing visually, and not sufficiently welcoming. The building, while attractive, is not easy for the transient visitor to identify as a Museum. Strategies to make the approach more inviting and provide visual cues to the building's function, are relatively easy to accomplish.

Based on HMS cost estimate for the schematic-level design work for exterior site upgrades:

- **Site Improvements/Upgrades:**

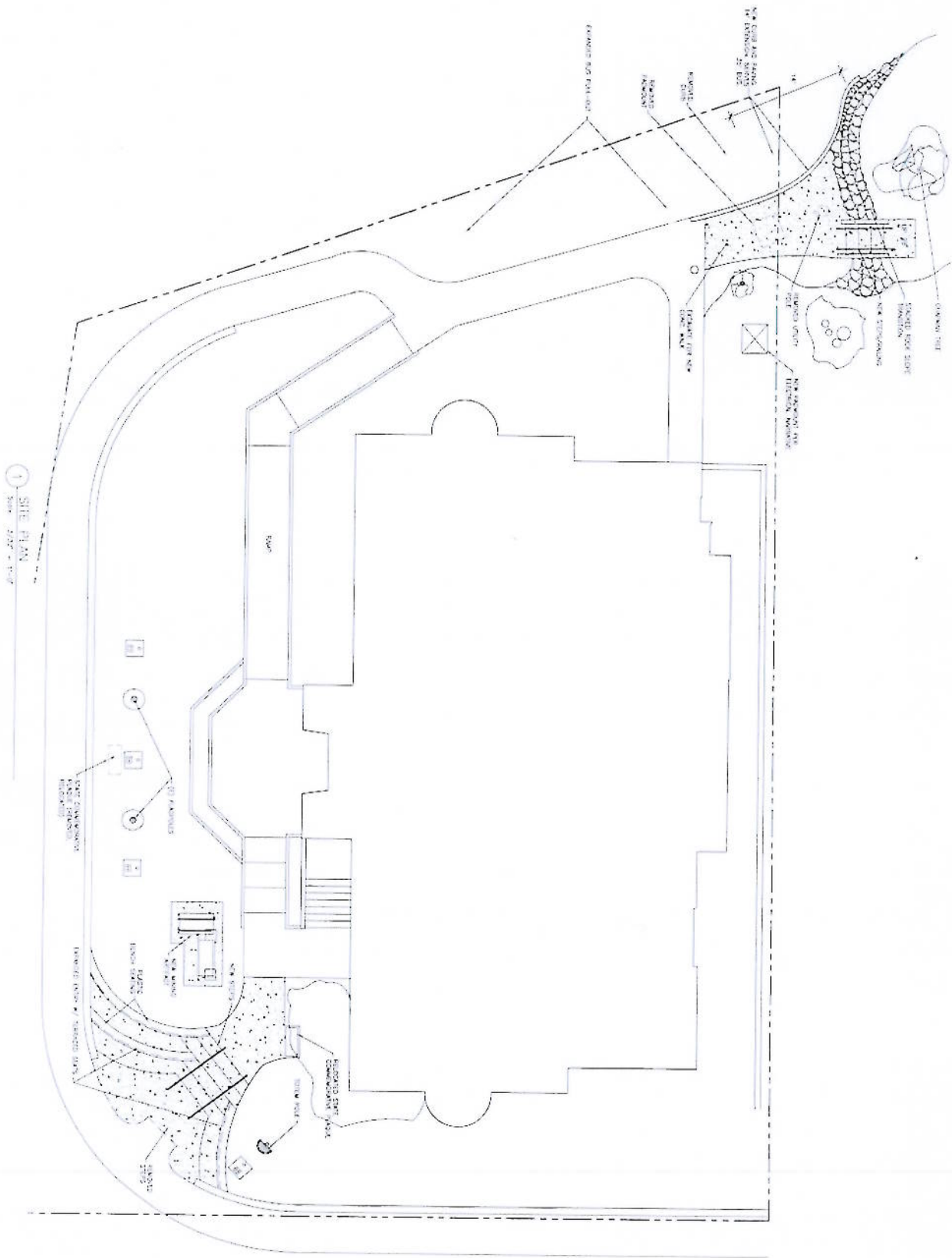
Project Costs: \$90,000 includes construction, design, contingencies, furnishings, and management costs.

Major changes recommended include the following:

- The concrete stairs and some of the concrete retaining wall at the front of the site will be demolished to open up the approach.
- New, more welcoming, concrete stairs and benches will be installed.
- A new concrete pad and lighting will be installed for display of a large artifact on the leading corner of the building, perhaps something associated with mining.
- The temporary pullout lane will be lengthened to accept a full sized tour and school bus, and the associated use designation changed.
- Concrete sidewalks will be modified, and some portions of utilities will be re-routed
- a new rock retaining structure added.

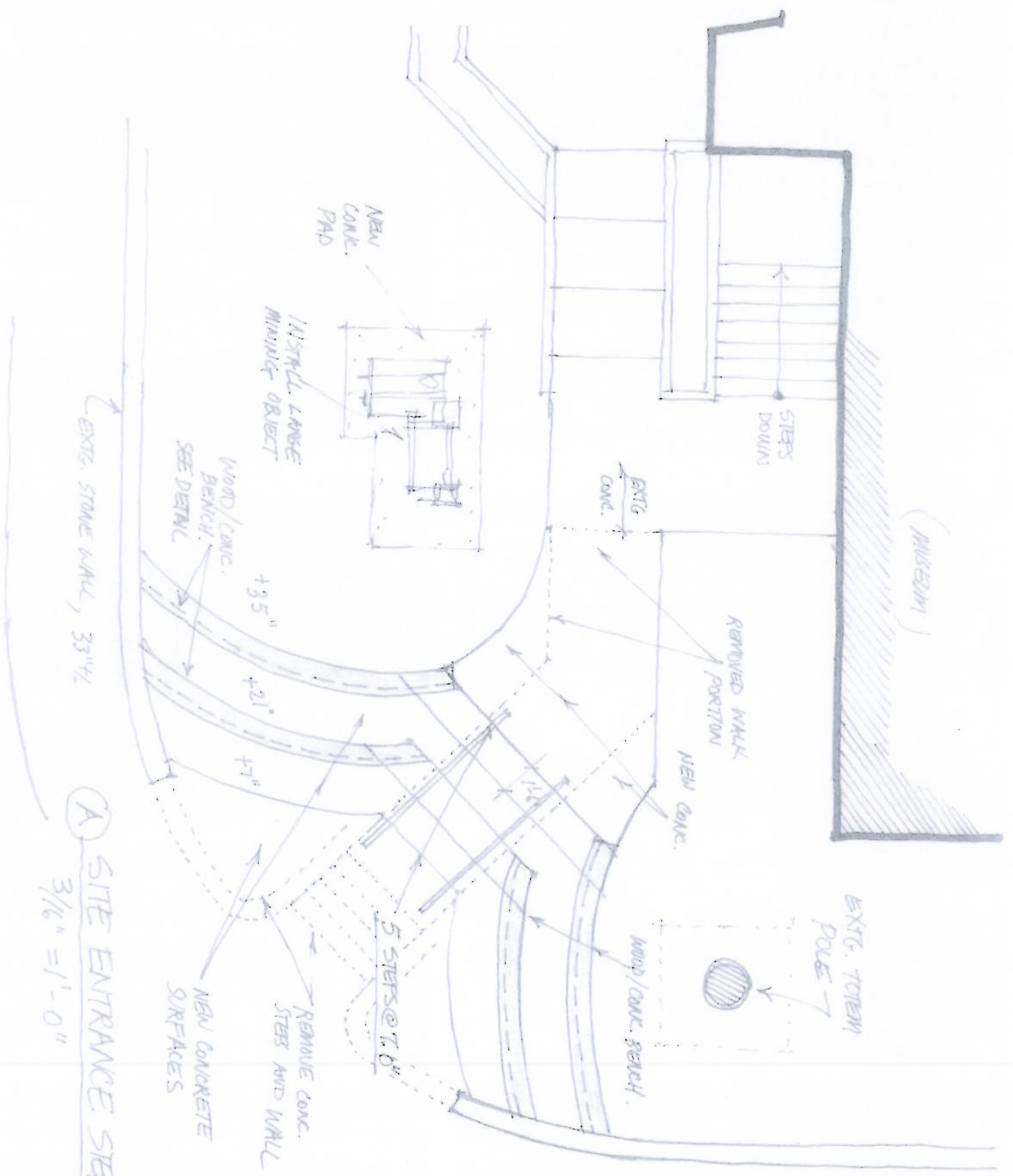
These upgrades will provide significant improvement to Museum operations and offer crucial visitors services like benches and easy access to the building at an important juncture in the walking visitors journey through Juneau. These upgrades can be completed at the same time as the turn-out upgrade. Please do not hesitate to contact me for more information.





1 SITE PLAN  
Scale: 1/8" = 1'-0"

|                    |  |   |  |                              |   |
|--------------------|--|---|--|------------------------------|---|
| <p><b>A100</b></p> | <p>SHEET NO.</p>                         | <p>DATE: 08/28/2007<br/>         DRAWN: JTB<br/>         CHECKED: A</p> | <p><b>JUNEAU-DOUGLAS CITY MUSEUM<br/>REMODEL</b></p> | <p><b>MRV ARCHITECTS</b></p> | <p>907-595-1371<br/>         800 GLACIER AVENUE #A<br/>         JUNEAU, ALASKA 99801<br/>         FAX 907-463-5544<br/>         mrv@mrvarchitects.com</p> |
|                    | <p>SHEET TITLE:<br/><b>SITE PLAN</b></p> | <p>FOR THE<br/>         CITY AND BOROUGH OF JUNEAU, ALASKA</p>          | <p>MRV # 0204</p>                                    |                              |   |



**A SITE ENTRANCE STEPS**

3/16" = 1'-0"

EXTG. STONE WALL, 33 1/4"

REMOVE CONC. STEPS AND WALL  
NEW CONCRETE SURFACES

5 STEPS @ 7.6"

WOOD/CONC. BENCH

NEW CONC.

REMOVED WALK PORTION

EXTG. CONC.

STEPS DOWN

(MUSEUM)

EXTG. TOTEM POLE

WOOD/CONC. BENCH  
SEE DETAIL

INSTALL LANSÉ MINING OBJECT

NEW CONC. PAD

+35"

+21"

+7"

11.8"

