



FAX COVER SHEET

6987 Perimeter Rd S., Suite 110  
Seattle, WA 98108  
Admin. Office 208/521-1599  
FAX 208/521-1885  
http://www.airliftnw.org

24-Hour Dispatch  
1-800-426-2430 (US/Canada)  
(206) 328-2569 (Seattle)

- Founding Member Hospitals
- Children's Hospital and Regional Medical Center
  - Harborview Medical Center
  - University of Washington Medical Center

- Associate Member Hospitals
- St. Joseph Hospital
  - Virginia Mason Medical Center
  - Bartlett Regional Hospital

DATE: 12/30/10 NO. OF PAGES (including cover sheet): 34

ATTENTION: MR Rod Swope

PHONE NUMBER: \_\_\_\_\_

COMPANY NAME: \_\_\_\_\_

FAX NUMBER: 586-5385

SENT BY: Shelly Deering

Airlift Northwest Juneau Base

PHONE NUMBER: (907) 790-4944

FAX NUMBER: (907) 790-4989

MESSAGE: \_\_\_\_\_  
\_\_\_\_\_  
\_\_\_\_\_  
\_\_\_\_\_

**Confidentiality Notice:** This facsimile transmission may contain confidential medical information protected by state and federal law. The information contained in the transmission is intended for the addressee only. If you are not the addressee of the facsimile, please do not review, disclose, copy or distribute it. If you have received this transmission by mistake, please telephone us immediately. Thank you.



December 28, 2010

Airlift Northwest Alaska  
8429 Livingston Way  
Juneau, AK 99801  
907-790-4944  
Fax 907-790-4989

Administration  
6987 Perimeter Road South #110  
Seattle, Washington 98108  
206-521-1599  
FAX 206-521-1865  
www.airlifnww.org

Patient Financial Services  
866-245-4373 (Toll Free)  
206-521-1616 (Seattle)  
FAX 206-521-1612

24-Hour ComCenter  
800-426-2430 (US/Canada)  
206-329-2569 (Seattle)

Airlift Northwest is a 501(c)(3)  
nonprofit organization.

Mr. Rod Swope  
City & Borough Manger's Office  
155 S. Seward St.  
Juneau, AK 99801

Dear Mr. Swope,

The support from the Marine Passenger Fee Proceeds has continued to assist Airlift Northwest in providing critical care transport of patients from Juneau. Airlift appreciates the opportunity to request funds again.

As of July 2010 Airlift Northwest changed from a 501(3) (C) to a Section 115 tax exempt governmental entity. Airlift Northwest continues to be a non-taxable, stand alone entity affiliated with University of Washington Medicine, Harborview Medical Center and Seattle Children's Hospital.

In 2010 we transported 14 cruise ship patients from Juneau when they became ill or injured. As of December 28<sup>th</sup> we have not recovered \$15,419.31 in billing costs for these transports. This does not include our contractual allowances for Medicare and insurances. We continue to see the impact from the current economic situation in which patients have no insurance or secondary insurances to assist in payment. As a non-profit, our mission is to provide critical access for patients in rural communities. For 2010 we have provided over 5 million dollars of uncompensated care. Airlift Northwest works hard to minimize the financial stress for patients, especially during the current economic times.

The support from the Marine Passenger Fee Proceeds will assist Airlift Northwest in their continued commitment to providing safe, efficient air ambulance transport service to cruise ship passengers and the Juneau community. We would like to request \$50,000.00 to offset unrecoverable costs incurred by transporting cruise ship passengers and crew.

Thank you for your consideration of this request. Please call or email me if you have any questions or I can provide you with additional information.

Cordially,

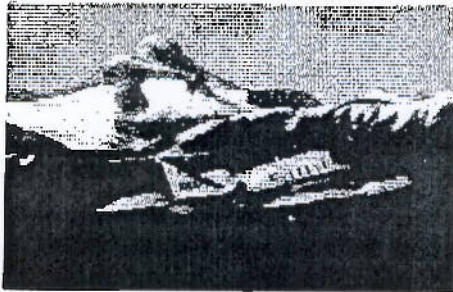
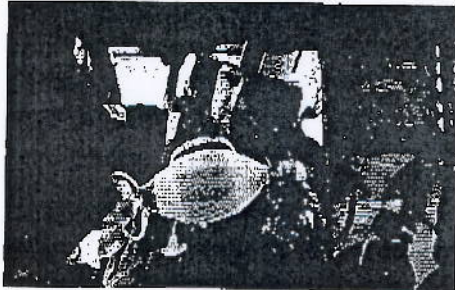
Shelly Deering  
Alaska Base Manager – Airlift Northwest  
907-723-0168  
shelly.deering@airlifnww.org



# AIRLIFT: NORTHWEST.

[www.airlftnw.org](http://www.airlftnw.org)

## FACT SHEET



**Airlift Northwest** is a preeminent provider of air medical services in the Pacific Northwest dedicated to providing safe, efficient air medical care to critically ill and injured infants, children and adults.

The program provides air medical service for one of the largest and most geographically varied service areas in the world — from isolated islands in Alaska to coastal villages in Western Washington and the high-desert communities in Eastern Washington.

Airlift Northwest provides air medical service from one of five bases located strategically throughout the Pacific Northwest. The rotary-wing division operates four bases in Washington — Bellingham, Arlington, Seattle and Olympia — that provide almost 700 hours per week of air medical services to Western and Central Washington.

Fixed-wing bases are located in Seattle and Juneau, Alaska, enabling Airlift Northwest to provide timely air medical transport services to a much broader region, including any location in the continental United States or Canada.

In 2010, Airlift Northwest added a new Turbo Commander aircraft to its Seattle air medical fleet. The new plane will give highly trained, specialized UW Medicine staff the ability to reach remote locations in more parts of Central Washington.

Airlift Northwest has safely cared for more than 80,000 patients and made more than 250,000 takeoffs and landings since its inception in 1982. The program's commitment to safety has resulted in investments in some of the most up to date equipment available, including state-of-the-art night vision goggles, satellite tracking and communications, as well as GPS approach systems.

Aircraft are equipped with the latest recommended equipment, including terrain-avoidance warning systems and aircraft proximity warnings, in addition to a weather radar and night-vision goggles.

Airlift Northwest is part of the UW Medicine health-care system, which also includes Harborview Medical Center, UW Medical Center, Northwest Hospital & Medical Center, UW Neighborhood Clinics, the UW School of Medicine and UW Physicians.

### Expertise

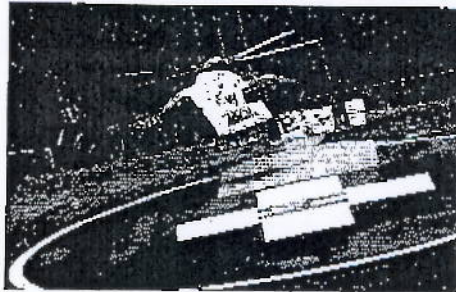
All aircraft fly with teams of two nurses certified in advanced cardiac life support, advanced trauma life support, pediatric advanced life support, trauma nursing care, neonatal resuscitation, critical care nursing, emergency nursing and flight nursing. This level of expertise is unique in the air medical industry and comparable to that found in a hospital intensive care unit.

*(continued on other side)*

UW Medicine



# AIRLIFT NORTHWEST CONT.



*(continued from other side)*

## Accreditation

Airlift Northwest has been accredited by the Commission on Accreditation of Medical Transport Services, or CAMTS, since 1997. Airlift Northwest was the first air medical service in Southeast Alaska to receive this recognition. Accreditation means a medical transport service meets a series of industry standards that address issues of patient care and safety.

## Community Service

Staff provides medical education and participates in community activities throughout the region. Airlift Northwest provides annual training in setting up safe landing zones for first responders and fire departments. It also reviews helipads annually, assists hospitals with training in order to make new helipads operational and helps hospitals develop policies and procedures pertaining to aircraft safety.

## AirCare Program

Airlift Northwest is pleased to offer a membership program that provides residents in communities in Alaska and Washington with high-quality air medical service at an affordable cost. As part of membership, the portion of the Airlift Northwest bill that isn't covered by insurance or Medicare is paid when Airlift Northwest is requested by a medical facility or an emergency response team to fly a critically ill or injured patient to appropriate medical care. AirCare membership is \$79 a year and covers all members of a household.

## 2010 Statistics

Total patients served .....	3,684
Rotary-wing, inter-hospital transfers .....	51 percent
Rotary-wing, 9-1-1/EMS scene responses .....	26 percent
Fixed-wing flights .....	23 percent

## History

Airlift Northwest was founded in 1982 by Dr. Michael Copass and a consortium of hospitals in the Seattle area, including University of Washington Medical Center, Seattle Children's and Harborview Medical Center, to bring high-quality air medical transportation to an underserved area — Southeast Alaska. Today, Airlift Northwest continues to provide air medical services in Alaska and throughout the Pacific Northwest.

### Airlift Northwest

6505 Perimeter Road South, Suite 200

Seattle, WA 98108

206.521.1599

[www.airliftnw.org](http://www.airliftnw.org)

**Fax Header Information**

---

City of Juneau  
(907)586-5385  
30-Dec-2010 01:53 PM

<b>Job</b>	<b>Date/Time</b>	<b>Type</b>	<b>Identification</b>	<b>Duration</b>	<b>Pages</b>	<b>Result</b>
4354	30-Dec-2010 01:52 PM	Receive		0:50	4	Success