

### Growing a Community of Weavers and So Much More

This summer the City Museum is honored to host the exhibition *For Our Children: Chilkat Regalia Woven in the Lineage of Jennie Thlunaut & Clarissa Rizal*. Curated by Mentor Chilkat Weaver Lily Hope, this exhibition showcases 18 robes woven by various artists over the past two years. Back in February 2023, Lily spoke about the journey she and her community of weavers undertook to bring these robes to life and this exhibition to fruition. This article reflects on her talk which can be viewed on our YouTube page.



@ sydneyakagiphoto

When asked to tell you what she likes most about weaving, Lily Hope is clear that it is the weaving community and collaborative making that she enjoys. And while she also loves the colors, shapes, fibers, and practice of weaving, she loves weaving with others. So, when the COVID-19 pandemic hit in 2020 and everyone was forced to isolate, it was devastating for her as a teacher, an artist, and to her community of weavers who could no longer gather.

As a full-time artist, Lily continued to weave during the pandemic. First, she wove an armband with a hand holding up three fingers and a thumb as a response to racial tension and violence happening across the United States. When worn it signifies support for Black Lives Matter and notifies others that the wearer is an ally.

Then, because masking became an important way to protect each other during the pandemic, Lily wove her first Chilkat Protector mask which took 70 hours. Throughout 2020, Lily wove a total of 37 of these masks as a way to document history as it happened. Three of these masks, *All Our Ancestors*, *Pride (LGBTQIA+)*, and *Transgender*, are now part of the permanent collection here at the Juneau-Douglas City Museum and are on display. According to Lily, the Ancestral Indigenous Protector series of masks show that “all of our other people are important to us and because we have a vibrant queer community in Juneau, all our community members deserve protection and support.”

Weaving masks also re-opened the door (or Zoom link) to weave with and teach others again, this time virtually. With 60 students weaving masks with her every Sunday, despite being in total isolated pandemic craziness, Lily would Zoom with her students and once again be in her happy place with her interconnected community.



Transgender-Chilkat Protector  
JDCM 2020.40.001



Pride-Chilkat Protector (LGBTQIA+)  
JDCM 2020.40.003



All Our Ancestors-Chilkat Protector  
JDCM 2020.40.002

# Director's Letter



Greetings friends.

It's hard to believe summer is coming to a close already and while we are seeing a record number of visitors at the museum this summer, you won't want to miss the current exhibition, *For Our Children: Chilkat Regalia Woven in the Lineage of Jennie*

*Thlunaut & Clarissa Rizal*, at the City Museum. Curated by Mentor Weaver Lily Hope, the exhibition showcases 18 finger twined children's robes by three generations of Chilkat Weavers. The works in this exhibition are the result of a monumental, multi-year group apprenticeship led by Hope. The exact number of people who hold knowledge and practice this endangered form of weaving, one of the most complex in the world, is unknown, but the number of weavers capable of executing a complete robe is believed to have tripled as a result of this project.

Moving into fall, we are celebrating the first ever Filipino American History Month in Alaska. In partnership with FilCom, Inc., KTOO, and the Alaska Native Sisterhood Camp 70, the exhibition *Mga Kuwento: Filipinos in Alaska* will open at the City Museum on Friday, October 6<sup>th</sup>. Filipino American History Month was designated by the AK Legislative Bill HB 23 and in addition to the exhibition, KTOO will begin rolling out the Mga Kuwento podcast and a weekend of community celebration at the Filipino Community Hall will be held on Saturday, October 7<sup>th</sup> and Sunday, October 8<sup>th</sup>. All are welcome and we are looking forward to the great food that will be prepared by local Filipino chefs and learning more about Filipino history and culture in Juneau.

Our new Administrative Assistant, Cate Ross, has been bringing lots of fun new things into the Museum Store and our new Curator of Collections and Exhibits, Dara Lohnes-Davies, is a welcome addition to our team. While Cate grew up here in Juneau, Dara comes to us via the Art Museum at the University of Wyoming. We hope you'll stop in to meet our new staff members, ask some questions, learn something new, and find a treasure to purchase to commemorate your visit. Beginning October, we will also start winter hours and free admission thanks to the support of our many sponsors.

There is always something happening at the City Museum and we look forward to seeing you.

Best,  
*Beth Weigel*  
Museum Director

## Juneau-Douglas City Museum Staff

### Museum Director

Beth Weigel  
beth.weigel@juneau.gov  
907-586-3572

### Curator of Collections & Exhibitions

Dara Lohnes-Davies  
dara.lohnes-davies@juneau.gov  
907-586-0965

### Curator of Public Programs

Elissa Borges  
elissa.borges@juneau.gov  
907-586-3572

### Administrative Assistant

Cate Ross  
cate.ross@juneau.gov  
907-586-3572

## Mission and Vision

The Juneau-Douglas City Museum fosters among its diverse audiences an awareness of Juneau's cultural heritage, values and community memory so we may draw strength and perspective from the past, inspire learning, and find purpose for the future.

As a public trust, we collect, preserve, interpret, and exhibit those materials that document the cultures and history of the Juneau and Douglas area.

### Physical Address:

114 West 4th Street  
Juneau, AK 99801

### Mailing Address:

155 South Seward St.  
Juneau, AK 99801

### Email:

[museum.info@juneau.gov](mailto:museum.info@juneau.gov)

### Phone:

907-586-3572



[juneau.org/museum](http://juneau.org/museum)



[jdcity\\_museum](https://www.instagram.com/jdcity_museum/), [#jdcem](https://www.instagram.com/jdcem/)



[JuneauDouglasCityMuseum](https://www.facebook.com/JuneauDouglasCityMuseum)



[Juneau Douglas City Museum](https://www.youtube.com/JuneauDouglasCityMuseum)



# Summer 2023 Exhibitions



## ***For Our Children: Chilkat Regalia Woven in the Lineage of Jennie Thlunaut & Clarissa Rizal***

This exhibition showcases finger twined Chilkat robes woven by three generations of Chilkat weavers: Master Weavers Jennie Thlunaut and Clarissa Rizal, living weavers Shgen George, Lily Hope and Ricky Tagaban, and up to thirty new student weavers.

Master Weavers Jennie Thlunaut and Clarissa Rizal left a strong legacy of Chilkat weavers to carry on their teachings with integrity. Lily Hope, Shgen George, and Ricky Tagaban are three weaver teachers who embody the teachings in their daily lives. The two Master Weavers and each of the three living mentors will display child-sized robes as well as smaller woven Chilkat accessories.

Student works include up to thirty smaller Chilkat robes woven between 2022 and 2023 with Lily Hope as the lead mentor weaver. Shgen George and Ricky Tagaban mentored students during an in-person finishing workshop hosted in partnership with Sealaska Heritage Institute, in late January 2023.

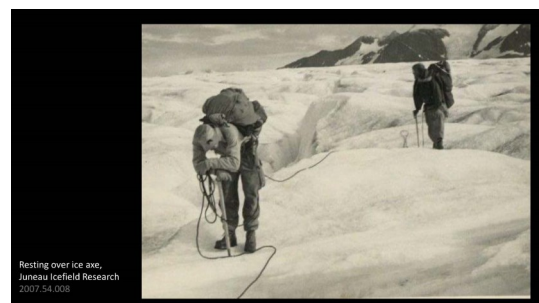
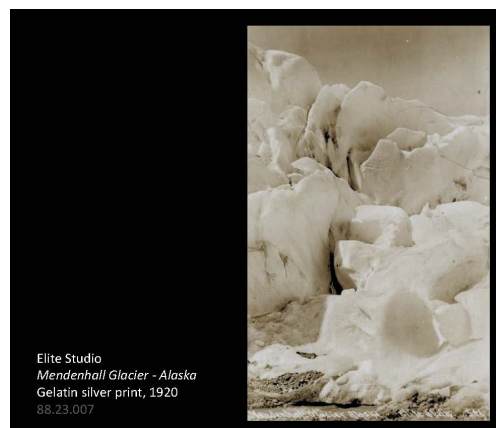


The Chilkat Mentorship Finishing Workshop and Art Show Opening is supported in part by: Sealaska Heritage Institute, Friends of the Juneau Douglas City Museum, Goldbelt Heritage Foundation, Native Arts and Cultures Foundation SHIFT: *Transformative Change and Indigenous Arts Grant*, The CIRI Foundation: *A Journey to What Matters: Increased Alaska Native Arts & Culture Project Grant*, Shee Atiká Inc., Huna Heritage Foundation, Chilkoot Indian Association, Canada Council for the Arts, and Central Council Tlingit Haida Indian Tribes of Alaska.

## ***Inspired by Ice: Descriptions and Interpretations of Southeast Alaska Glaciers***

The iconic glaciers that flow from the Juneau ice field, notably the Mendenhall and Taku, serve as constant visual reminders of the capital city's unique climate and geography, and have inspired artists, photographers, and adventure seekers through history.

This mini-exhibition includes a selection of paintings and historic photographs from the museum's collection that relate to glaciers in Southeast Alaska. The captivating qualities of Juneau's frozen rivers are reflected in early 20<sup>th</sup> century snapshots, traditional landscapes, and contemporary interpretations.





# Curator's Corner



## Dara Lohnes-Davies, Curator of Exhibitions and Collections

Hello Juneau-Douglas City Museum Supporters,

I'm the new Curator of Collections and Exhibitions and I am thrilled to be here at the Juneau-Douglas City Museum. I arrived in Juneau early August with my husband and our cats in tow from the snowy mountain desert of Laramie, Wyoming where I was the Manager of Collections for the University of Wyoming Art Museum. We have found Juneau and everyone we've met here to be extremely welcoming and helpful to us as we learn about our new home. Thank you for the wonderful welcome.

Simply, I love museums, but most especially the magic that is collections and exhibitions. There are very few careers where one has the privilege of taking care of and telling a community's stories through their material history. I see myself as one link in a long chain of caretakers in each object's journey through time. I intend to care for the objects here with the utmost respect to the cultures that created and entrusted them to our care. Please, always feel welcome to come to me with new ideas and perspectives about our collection. Part of the magic of museums is the constant learning someone in my position gets to do. I am looking forward to learning as many of Juneau and Douglas's stories from the museums diverse collection and the vibrant, active communities here that I am able. I also look forward to retelling and supporting those stories to the best of my ability in the upcoming exhibitions that have been planned.

In the coming months I plan on continuing to learn the ins and outs of JDCM and the passionate community it symbolizes. This place truly is a gem with a wonderful mission and vision for its future. These past two weeks I've hit the ground running with Tasha Elizalde and her upcoming exhibition, *Mga Kuwento*, about the Filipino Community of Juneau. She is doing amazing work pulling together materials from that community and I'm excited to see the culmination of her vision for the exhibition. Make sure you come by to see it October 6th!

### Continued from Page 1

This weaving community brought strength to everyone and helped sustain Lily while doing the hard isolated pandemic work.

This practice of weaving on-line brought Lily and her community of weavers together for over two years and resulted in the current exhibition, *For Our Children: Chilkat Regalia Woven in the Lineage of Jennie Thlunaut & Clarissa Rizal* now on view at the City Museum. The exhibition is an homage to the women who carried the knowledge and taught others to Chilkat weave. Lily learned to Chilkat weave with her mother Clarissa Rizal, who in turn learned from Jennie Thlunaut. The exhibition also celebrates each artist's completion of their child-sized Chilkat robe and the largest gathering of Chilkat robes and weavers in over 100 years.

"We built a community beyond Juneau and Southeast Alaska and then this community of weavers got to come home and learn their great grandmothers' work. We not only just survived the pandemic, but we came together on the regular and we found and created and continue to bring strength to our communities" (Hope, L).

# Recent Acquisitions

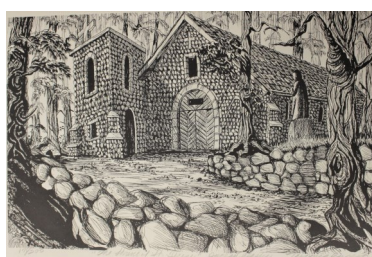
During some reorganization of the downtown library's storage space, library staff discovered a stash of unframed art prints, including work by Dale DeArmond, R.T. Wallen, and Dianne Anderson, and other local artists. The works present a variety of subject matter and technical execution, with examples of woodblock prints, etchings, serigraphs, and lithographs that depict landscapes, wildlife and aspects of Alaskan culture. The City Museum was delighted to accept the transfer of a total of eighteen prints, strengthening our ever expanding collection of significant Juneau-based art.



Kitty Lloyd Bauer, *Untitled*.  
Serigraph, ca. 1995.  
JDCM 2023.04.014



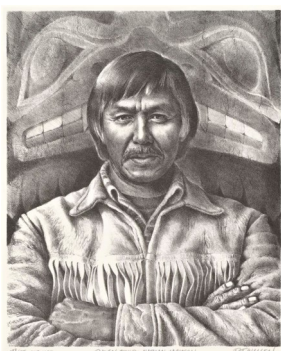
Barbara Lavalley, *Walrus Dancers*. Etching, 1981.  
JDCM 2023.04.017



Virginia Eggert, *Shrine of St. Therese*.  
Lithograph, ca. 1970.  
JDCM 2023.04.015



Dale DeArmond, *An Oovning Yak for Susan*. Woodblock print, 1973. JDCM 2023.04.003



R. T. Wallen, *Raven Child: Nathan Jackson*. Lithograph, 1987.  
JDCM 2023.04.020



Faulkenberry, *Loon*. Serigraph, 1989.  
JDCM 2023.04.016



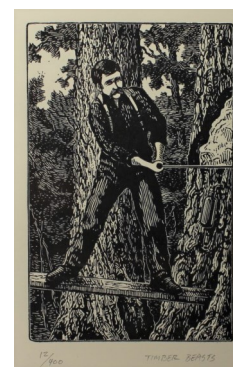
Dale DeArmond, *Raven in Love*.  
Woodblock print, 1990.  
JDCM 2023.04.009



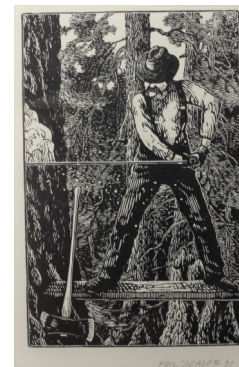
Dale DeArmond, *Halibut*.  
Woodblock print, 1967.  
JDCM 2023.04.005



Dianne Anderson, *Ice Passages*. Engraving, 1995. JDCM 2023.04.011



Eric Bealer, *Timber Beasts*. Prints on paper, 1991.  
JDCM 2023.04.012-13





# Employee Spotlight

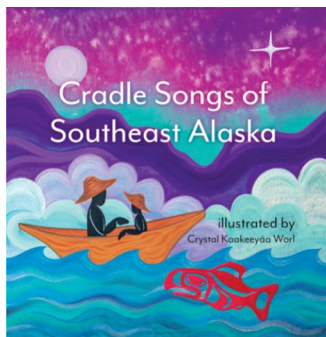


## Cate Ross, Museum Administrative Assistant

Cate Ross is pleased to be the City Museum's new Administrative Assistant! Cate was born and raised here in Juneau and after some time exploring other areas has been back full time for almost eight years. She has been part of the local theatre community her entire life, and has been active with numerous arts organizations recently, including serving as a board member with Juneau Ghost Light Theatre (formerly Juneau Douglas Little Theatre) for the past six years. Cate enjoys Juneau for its unique mix of a vibrant arts and culture scene with an incredible outdoor environment, and loves sharing all of that with her partner and child.

In Cate's spare time (when not acting, singing, doing drag or otherwise performing), she likes to forage for mushrooms and other goodies, have dance parties with her 5 year old, cook eat and share delicious food, hike, ski, and spend time with family.

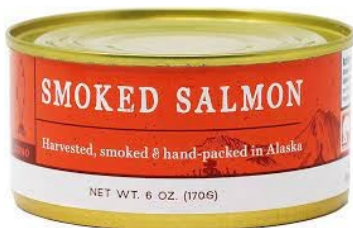
At the museum, she's excited to support exhibits and educational programming, and has been focused on expanding the Museum Store's selection to a more diverse variety of goods and artists. Keep an eye out for great books, fun trinkets and home goods, and local art as she grows the store to better represent what Juneau has to offer!



## New in the Museum Store

The museum store has a lot of fun new items!

Find books for kids of every age, from board books (*Cradle Songs of Southeast Alaska*), to young adult non-fiction (*Fighter In Velvet Gloves*). We also have a selection of genres which include history, memoir, and poetry. We keep our Trickster Company section well stocked with playing cards, earrings (like the kind seen on the TV show *Alaska Daily!*), ornaments, and more. Looking for a yummy treat, or to restock your kitchen? Check out our home goods section for Swedish dishcloths designed by Hollis Kitchin, flour sack towels from Frost & Fur, smoked salmon from Wildfish Cannery, and kelp products from our friends at Barnacle Foods. Of course, we always have notecards, prints, and jewelry by local artists that make wonderful gifts. Finally, top it all off with a custom chocolate bar from Birdsong Chocolates in Anchorage! P.S. Remember that you can always visit the store without paying museum admission.



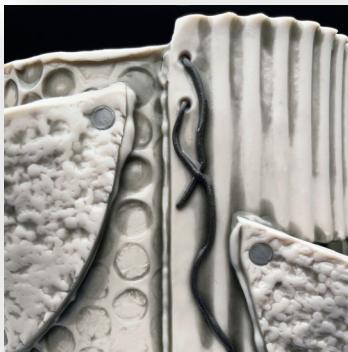
# Fall–Winter Exhibitions



## **Mga Kuwento: Filipinos of Juneau | October–November 2023**

In Alaska almost 20,000 people identify as Filipino – it’s the largest concentration of Filipinos per capita of any state. Alaska’s history has been shaped by its Filipino community, but Filipino stories are rarely highlighted by the community they help form. KTOO, along with Filipino Community Inc., Juneau-Douglas City Museum, and Alaska Native Sisterhood Camp 70 collaborated to fill this gap in local Filipino representation. *Mga Kuwento: Filipinos of Juneau* is an exhibition which celebrates the history and contributions of Filipinos in Juneau.

**Opening Reception:** October 6<sup>th</sup>, 2023 | 4–7pm

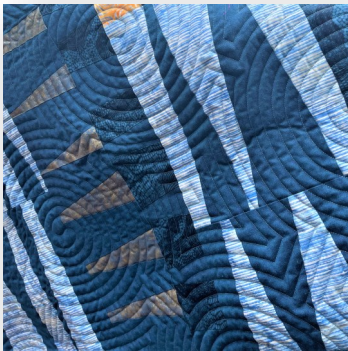


## **Animism Manufactured | December 2023–January 2024**

Recent Work by Bonilyn Parker

This exhibition features a collection of ceramic works exploring the significance of connections through objects and imagined histories. Embellished with the suggestion of mending, Bonilyn Parker’s pieces commemorate the endangered art of repair. Working in clay, she explores the spaces that exist between maker and user, disposable and reusable, sentimental and material value. Bonilyn Parker M.F.A. lives in Juneau, Alaska where she nurtures her art practice at her home studio and teaches ceramics at the University of Alaska Southeast.

**Opening Reception:** December 1<sup>st</sup>, 2023 | 4–7pm



## **Meet the Juneau Modern Quilt Guild | February 2024**

The Juneau Modern Quilt Guild (JMQG) was established in late 2020 and is Alaska’s first and only chapter of the Modern Quilt Guild. With over 40 active, talented members, the JMQG has offered education in modern quilting techniques and design to quilters of all ability levels. JMQG Members challenge themselves to embrace improvisational quilting (no patterns), new techniques such as curved piecing, use of negative space, and minimalism. This exhibition will consist of 20-25 fabric quilts which exemplify characteristics of what makes a quilt “modern” in design.

**Opening Reception:** February 2<sup>nd</sup>, 2024 | 4–7pm



## **Stellar! The 20<sup>th</sup> Annual 12x12 Community Art Exhibition | March–April 2024**

Each year the City Museum hosts a community art exhibition in which artists of all ages are encouraged to create works within the parameters of a square or a cube, measuring 12" x 12" (by 12") including the framing. This year we encourage artists to create on the theme "Stellar". Entry forms with a registration fee of \$12.12 are due February 10<sup>th</sup>, 2024 and are available to download from the City Museum’s website at [Juneau.org/museum](http://Juneau.org/museum).

**Opening Reception:** March 1<sup>st</sup>, 2024 | 4–7pm

Juneau Douglas  
CITY MUSEUM  
155 South Seward St.  
Juneau, AK 99801

## Pictures from the Past



*Juneau Memorial Library*, postcard. Photograph by Joseph Alexander, 1953. JDCM 90.28.001



*Juneau City Library*, photograph. "Assistant Librarian Mrs. Cummings and NYC aide at the main reception desk. September, 1967" JDCM 85.22.291

### FoJDCM Membership Card



Charles Myron Clark (American, 1858–1925), *Taku Inlet*. Oil on canvas, 1921. Museum purchase, 97.37.001.

## Become a FoJDCM Member

With six membership levels to choose from you can join, renew, or gift a membership. Membership levels come with benefits such as free admission to the City Museum and a 20% discount on select items in the museum store. Memberships are good for one year from date of purchase. Visit [fojdc.org](http://fojdc.org) to purchase or renew your membership.