



JUNEAU INTERNATIONAL AIRPORT (JNU)

AIRFIELD RAMP DRIVER'S TEST

1. What is a good indicator that it's safe to pass by a helicopter area:
 - a. No passengers present
 - b. Helicopter being refueled
 - c. Closed doors on a running helicopter
 - d. Helicopter is "spooled-up"

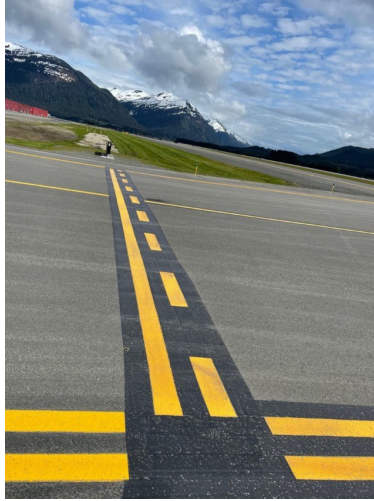
2. The safest approach to a running helicopter with a vehicle is _____?
 - a. From the rear when the main rotors are spinning.
 - b. From the front if you think your vehicle can fit under the spinning rotor blades.
 - c. Within 25 feet.
 - d. When directed by the pilot or ground crew.

3. What is considered a "Non-Movement" area?
 - a. Areas under control of ATCT
 - b. Areas not under control of ATCT
 - c. Runways and Taxiways
 - d. Float Pond

4. Signs of an imminent aircraft push back from a gate are?
 - a. Jet Bridge is retracted from the aircraft
 - b. Belt loader and baggage carts are away from the aircraft
 - c. The red blinking anti-collision lights are on
 - d. All of the above

5. Signs that a jet aircraft is about to arrive at a gate is?
 - a. Ground crew is assembled in the gate area
 - b. Ground vehicles are lined up on the aircraft lead-in line
 - c. The jet bridge amber beacon is on
 - d. a. and c. only

6. What is required to drive in the north terminal / air taxi ramp area near the Gate 1 area?
- a. 135AOA Badge
 - b. Airfield Ramp Driver's Endorsement
 - c. GA Badge
 - d. Both a. and b.
7. What is the following pavement marking?



- a. Runway Entrance and Hold Short Marking
 - b. Airport Perimeter Line
 - c. Movement/Non-Movement Area Boundary Marking
 - d. No Passing Zone
8. When must a driver be in possession of their driver's license at the airport?
- a. In the sterile area
 - b. When walking in the AOA
 - c. At all times while driving on the airfield
 - d. Not required when displaying an airport security badge
9. Proof of financial responsibility or vehicle liability insurance cards are to be in vehicles?
- a. True
 - b. False

10. Who has the right of way over vehicular traffic?

- a. Moving aircraft
- b. Airport Vehicles
- c. Passengers being escorted to an aircraft
- d. All of the above

11. According to Airport regulations, the only fuel spills that are required to be reported are_____.

- a. All spills, regardless of size, amount or location
- b. More than 100 gallons if only a petroleum product
- c. Only accidental spills into the water at the float pond
- d. Any over five (5) gallons but less than 50 gallons

12. What is required prior to driving into this area?



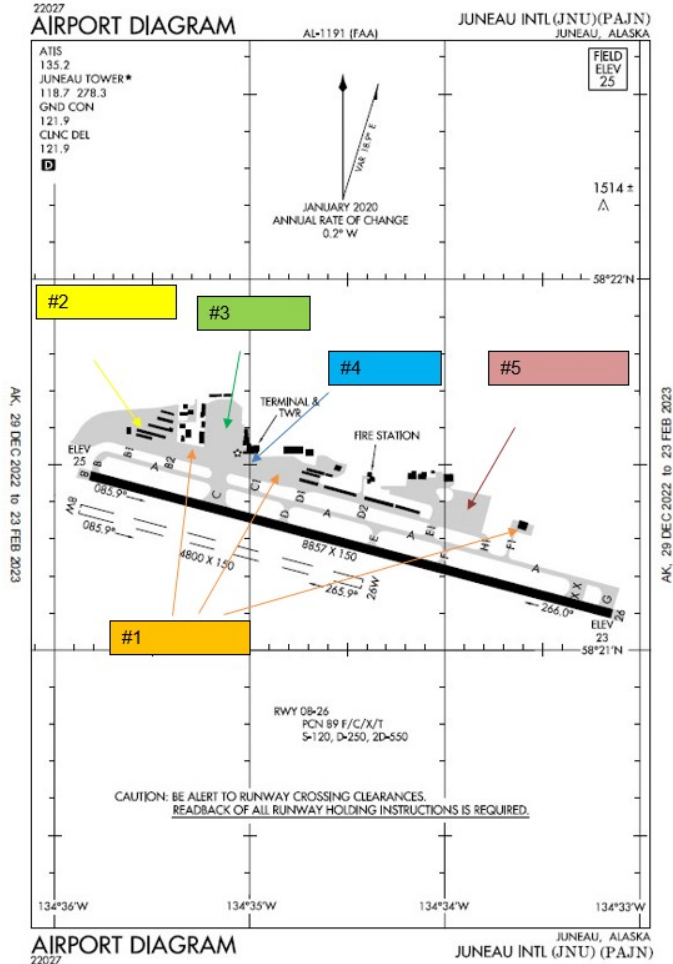
- a. Vehicle Operator must have a SIDA Badge
- b. A ramp drivers endorsement
- c. A legitimate work-related reason
- d. All of the above

13. Who has the right of way at a perimeter security gate?

- a. In-bound traffic
- b. Out-bound traffic
- c. Airport vehicles
- d. Both a. and c.

14. What areas are POV's restricted from entering:
- a. Air Carrier Ramps
 - b. Main Terminal and Gate Areas
 - c. SIDA Areas
 - d. All of the above
15. When is a driver or equipment operator required to pick up FOD?
- a. When it is observed or encountered
 - b. Only if it is convenient to stop
 - c. Only at night
 - d. Never
16. The speed limit on the airfield is?
- a. 20 MPH (unless posted otherwise)
 - b. 10 MPH for construction equipment
 - c. Speed limit is for only paved roadways
 - d. Both a. and b.
17. When riding a bicycle on the ramp, what is required?
- a. High visibility vest
 - b. Airfield Ramp Driver Endorsement
 - c. Helmet
 - d. Both a. and b.
18. Who must be notified of a fuel spill?
- a. Airport Police
 - b. Airfield Maintenance
 - c. DEC
 - d. Both b. and c.
19. While towing an aircraft at night, what is required?
- a. A vehicle following behind the towed aircraft with its flashers on
 - b. Nothing as towing aircraft in the hours of darkness is prohibited
 - c. Only if the towing vehicle has an amber beacon
 - d. The aircraft's position lights must be on

20. Vehicle drivers are responsible for the actions and activities of their passengers.
- True
 - False



AIRPORT LAYOUT DIAGRAM

21. Where on the diagram above would you expect to encounter helicopter operations while driving on the ramp?
- #1
 - #2
 - #3
 - #4

22. In reference to the diagram above, what kind of badge would you need to drive into #3?

- a. SIDA badge with  endorsement
- b. GA badge only
- c. 135 – AOA badge with  endorsement
- d. Sterile area badge

23. Airport Security Badges can be renewed:

- a. Up to 30 Days prior to expiration
- b. Only 15 Days prior to expiration
- c. Only 5 Days prior to expiration
- d. On the day of expiration only.

24. When can passengers ride in the bed of a pick-up truck on the airfield or apron/ramp areas?

- a. Never
- b. When towing aircraft
- c. While driving on the float pond road
- d. When backing into a hangar.

25. What is the maximum number of baggage carts can be towed at one time?

- a. 2
- b. 5
- c. 4
- d. 3

26. When is it safe to pass behind an aircraft that has arrived at its gate?

- a. When the anti-collision red flashing lights turn off
- b. When vapors can no longer be seen coming from the engines
- c. When the pilot turn's off the seat-belt sign inside the aircraft
- d. Both a. and b.

27. No person may park within _____ feet from a fire hydrant?

- a. 5
- b. 10
- c. 25
- d. 50

28. When is it permissible for a passenger to ride on the running boards or fenders of GSE?
- a. When returning to the hangar after towing out a helicopter
 - b. When towing an aircraft to the float pond
 - c. Never
 - d. Both a. and b.
29. What should you do when a perimeter security gate fails to close after YOU open it?
- a. Call airport police after leaving the area with the gate stuck open
 - b. Pull the gate closed by hand if in a hurry to leave the airport
 - c. Wait to be relieved by police or airfield maintenance
 - d. Call 911
30. When involved in an accident on the airport grounds, the driver must_____?
- a. Stop and remain at the scene
 - b. Render assistance if needed to injured persons
 - c. Report the accident to airport police or the airport manager's office
 - d. All of the above