



ADDENDUM TO THE CONTRACT

for the

**Bartlett Regional Hospital
MRI & CT Replacement
Contract No. BE23-042**

ADDENDUM NO.: THREE

**CURRENT DEADLINE FOR BIDS:
August 16, 2022**

PREVIOUS ADDENDA: TWO

ISSUED BY: City and Borough of Juneau
ENGINEERING DEPARTMENT
155 South Seward Street
Juneau, Alaska 99801

DATE ADDENDUM ISSUED: August 11, 2022

The following items of the contract are modified as herein indicated. All other items remain the same. This addendum has been issued and is posted online. Please refer to the CBJ Engineering Public Purchase webpage at: <https://www.publicpurchase.com/gems/juneau.ak/buyer/public/home>

CLARIFICATIONS:

Question: *"Please provide record drawings and/or geotechnical report for area beneath new chiller pad. (C/S102)."*

Response: See attached related 2004 drawings (C1.00, C3.00, and C5.03) to aid in bidding purposes. Call (907) 586-1333 for underground utility locates and 811 Alaska Digline for underground ACS & GCI locates prior to any excavation activities. The contractor is responsible for locating, protecting and maintaining the utilities through the construction of the project. Any damage to the underground utilities during construction shall be paid for by the contractor and shall be considered incidental to the contract.

Question: *"Please confirm on-site contractor staging is available, or clarify."*

Response: On-site contractor staging is available for laydown and storage. See added site plan and area marked.

Question: *"Please confirm area suitable for storing items removed and salvaged by Contractor and retained by Owner or for reuse is available inside building where work is taking place, or clarify."*

Response: In the same area used for on-site contractor staging, space is available for temporary used casework and fixture storage if needed. Any high value medical equipment storage not addressed needs to be coordinated with owner.

Question: *“In the Alternate 1 bid item, are we to provide New Ceiling HVAC diffusers, where it called out for us to ‘Clean and Re-use existing ones, on plan page M202 Note 3 and 8?’”*

Response: Intent is for Contractor to clean and re-use existing ceiling grilles and diffusers as shown on M202 if ceilings are being replaced. If ceiling is to remain, existing grilles and diffuser can remain as installed. Contractor’s option to provide new grilles and diffusers in lieu of cleaning and re-using existing.

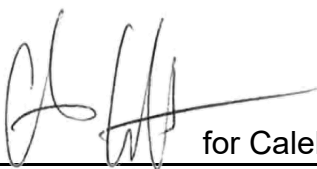
Question: *“Information regarding the free cooling; Capacity required from free cooler, Fluid, Entering fluid temp, Leaving fluid temp and Ambient temp to activate free cooling.”*

Response: Cooler Information:

- Capacity required from free cooler: 20 tons
- Fluid: Same as that used for chiller – 35% propylene glycol
- Entering fluid temp: 57 degrees F
- Leaving fluid temp: 44 degrees F
- Ambient temp to activate free cooling: 32 degrees F

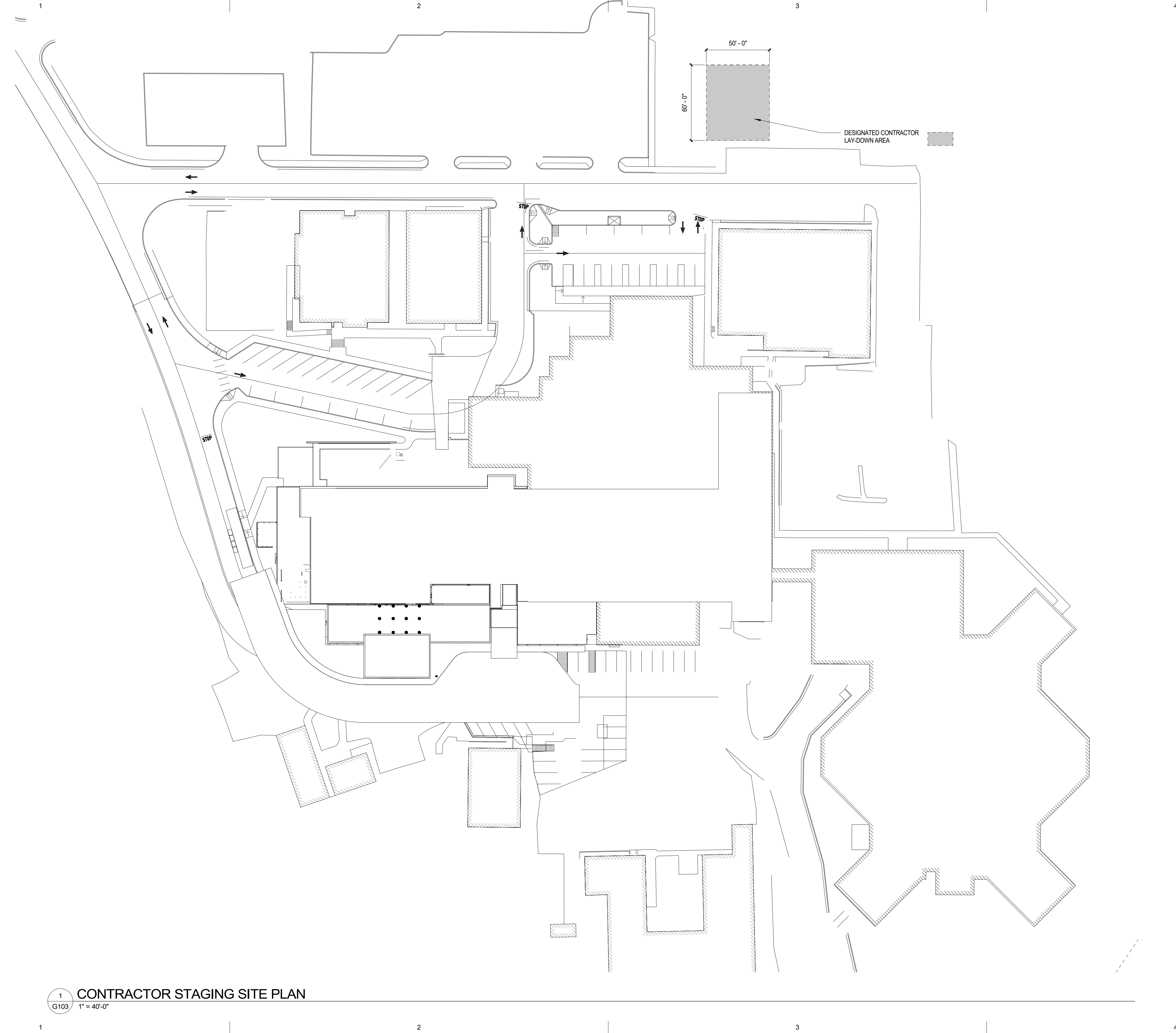
Question: *“Quench Vent calls for new duct installation in existing route of entire run, with roof termination. Need drawing showing route of existing. Could we simply connect to the existing in the mechanical room?”*

Response: Provide 6-inch diameter welded stainless steel quench vent as described on the design drawings.

By:  for Caleb Comas
Caleb Comas,
Contract Administrator

Total number of pages contained within this Addendum: 6

BIM 360://21090.01 BRH Emergency Dept Add & Reno/21090.01 BRH ED Add & Reno.rvt
Plot Date Time: 8/9/2022 11:04:42 AM



1
G103
CONTRACTOR STAGING SITE PLAN
1" = 40'-0"



ARCHITECTS ALASKA
AK Corp. Authorization AECC561
900 W. 5th Avenue, Suite 403
Anchorage, Alaska 99501-2029
907.272.3567 907.277.1732 fax
191 E. Swanson Avenue, Suite 203
Wasilla, Alaska 99564-7025
907.373.7503 907.376.3166 fax
347 S. Ferguson Ave, Suite 3
Bozeman, Montana 59715
406.404.1588
www.architectsalaska.com

City and Borough of Juneau
**BARTLETT REGIONAL HOSPITAL MRI
& CT REPLACEMENT**
3260 Hospital Dr. Juneau, AK 99801

Revisions		
No.	Description	Date

Drawn by ARB	Date 14 JULY 2022
Checked Checker	Job No. 22008.01

Sheet Contents
DESIGNATED CONTRACTOR
LAY-DOWN AREA

Sheet No.
G103

ABBREVIATIONS (CIVIL DRAWINGS ONLY)

ABAN	ABANDON(ED)	JCT	JUNCTION
A/C	ASPHALT CONCRETE PAVEMENT	JT	JOINT
ADJ	ADJACENT; ADJUST		
AGGR	AGGREGATE	K	HORIZONTAL DISTANCE REQUIRED TO AFFECT A 1% CHANGE IN SLOPE
ALT	ALTERNATE		
APPROX	APPROXIMATE; APPROXIMATELY		
ARCH	ARCHITECT; ARCHITECTURAL	L	ANGLE; LENGTH
ASPH	ASPHALT	LF	LINEAL FEET
ATB	ASPHALT TREATED BASE	LS	LANDSCAPE
AVE	AVENUE	LT	LEFT
		LUM	LUMINAIRE
BC	BOTTOM OF CURB		
BLDG	BUILDING LINE	MATL	MATERIAL
BLK	BLOCK	MAX	MAXIMUM
BLKG	BLOCKING	MECH	MECHANICAL
BLVD	BOULEVARD	MFR	MANUFACTURER
BM	BENCH MARK	MFRG	MANUFACTURING
BOT	BOTTOM	MH	MANHOLE
BRG	BEARING	MIN	MINIMUM
BTWN	BETWEEN	MISC	MISCELLANEOUS
BVC	BEGIN VERTICAL CURVE	MJ	MECHANICAL JOINT
BVCE	BEGIN VERTICAL CURVE-ELEVATION	MON	MONUMENT
BVCS	BEGIN VERTICAL CURVE-STATION	MTL	METAL
BW	BOTTOM OF WALL		
		N	NORTH; NORTHING
C	COMMUNICATION UTILITY LINE	NG	NATURAL GAS
Cb	CABLE	NIC	NOT IN CONTRACT
CB	CATCH BASIN	NTS	NOT TO SCALE
CCP	CEMENT CONCRETE PAVEMENT	OD	OUTSIDE DIAMETER
Cd	CONDUIT	OHP	OVERHEAD POWER
CF	CUBIC FEET		
CI	CAST IRON	PC	POINT OF CURVATURE
CIP	CAST-IN-PLACE	PERF	PERFORATE; PERFORATED
CJ	CONSTRUCTION JOINT	PERP	PERPENDICULAR
C	CENTER LINE	PH	PHASE
CL	CLASS; CENTER LINE	PI	POINT OF INTERSECTION
CLR	CLEAR; CLEARANCE	PVC	POINT OF INTERSECTION ON VERTICAL CURVE
CMP	CORRUGATED METAL PIPE		
CO	CLEANOUT; CONCRETE OPENING	R	PROPERTY LINE
COMM	COMMUNICATION	PLC(S)	PLACE(S)
CONC	CONCRETE	POC	POINT ON CURVE
CONSTR	CONSTRUCTION	PP	POWER POLE
CONT	CONTINUATION	PROP	PROPOSED
CONTR	CONTRACTOR	PSI	POUNDS PER SQUARE INCH
CPP	CORRUGATED PLASTIC PIPE	PT	POINT OF TANGENCY; POINT
CTR	CENTER	PV	POWER VAULT
CU	CUBIC; COPPER	PVC	POLYVINYL CHLORIDE; POINT OF VERTICAL CURVATURE
CULV	CULVERT		
CW	CONCRETE WALKWAY	PVI	POINT OF VERTICAL INTERSECTION
CY	CUBIC YARDS	PVMT	PAVEMENT
		PVT	POINT OF VERTICAL TANGENCY
DEMO	DEMOLISH; DEMOLITION		
DET	DETAIL	R	RADIUS
DIA	DIAMETER	REF	REFERENCE
DIAG	DIAGONAL	REINF	REINFORCING; REINFORCEMENT; REINFORCED
DIM	DIMENSION		
DIP	DUSTLE IRON PIPE	REOD	REQUIRED
DRWY	DRIVEWAY	RET	RETAINING
DS	DOWNSPOUT	RL	RAIN LEADER
DWG	DRAWING	ROW	RIGHT OF WAY
DWL	DOWEL	RT	RIGHT
		RW	RIGHT OF WAY
		R/W	RIGHT OF WAY
E	EAST; EASTING; ELECTRICAL UTILITY LINE		
(E)	EXISTING	S	SLOPE; SOUTH
EA	EACH	SD	STORM DRAIN LINE
EL	ELEVATION (HEIGHT)	SDMH	STORM DRAIN MANHOLE
ELEC	ELECTRICAL	SECT	SECTION
ELEV	ELEVATION	SHR	SHOULDER
ENGR	ENGINEER	SHT	SHEET
EP	EDGE OF PAVEMENT	SL	SLOPE
EVC	END VERTICAL CURVE	SPEC	SPECIFICATION
BVCE	END VERTICAL CURVE-ELEVATION	SQ	SQUARE
BVCS	END VERTICAL CURVE-STATION	S	SANITARY SEWER LINE
EX/EXIST	EXISTING	SS	SEWER SERVICE LINE; SANITARY SEWER MANHOLE
		SSMH	SANITARY SEWER MANHOLE
F	FLANGE JOINT	STA	STATION
FC	FACE OF CURB	STD	STANDARD
FD	FOOTING DRAIN; FOUNDATION DRAIN	STRUCT	STRUCTURAL
FDN	FOUNDATION		
FF	FINISH FLOOR	T	TELEPHONE UTILITY LINE; TOWNSHIP
FH	FIRE HYDRANT	TC	TOP OF CURB
FIG	FIGURE	TEL	TELEPHONE
FIN	FINISH; FINISHED	TEMP	TEMPERATURE; TEMPORARY
FL	FLOW LINE	TESC	TEMPORARY EROSION/STORM CONTROL
FT	FOOT; FEET	THK	THICK
FTG	FOOTING	THRU	THROUGH
		TOS	TOP OF SLOPE
G	GAS UTILITY LINE	TW	TOP OF WALL
GAL	GALLON	TYP	TYPICAL
GALV	GALVANIZED		
GEN	GENERAL	UD	UNDER DRAIN
GL	GUTTER LINE	UGP	UNDERGROUND POWER
GM	GAS METER	UTIL	UTILITY
GND	GROUND		
GV	GATE VALVE	V	VALVE; VAULT
		VB	VALVE BOX
HC	HANDICAP	VC	VERTICAL CURVE
HDPE	HIGH DENSITY POLYETHYLENE	VERT	VERTICAL
HH	HAND HOLE		
HORIZ	HORIZONTAL	W	WATER UTILITY LINE; WEST
HP	HIGH POINT; HP STEEL SHAPE	W/	WITH
HT	HEIGHT	WH	WEEP HOLE
HYD	HYDRANT	WM	WATER METER
ID	INSIDE DIAMETER	W/O	WITHOUT
IE	INVERT ELEVATION	WT	WEIGHT
IN	INCH; INCHES	WV	WATER VALVE
INCL	INCLUDE		
INV	INVERT	X-SECT	CROSS SECTION
		YD	YARD
		&	AND
		AT	AT
		Ø	DIAMETER; ROUND
		⋄	FOOT; FEET

LEGEND

EXISTING	TO BE REMOVED	NEW CONSTRUCTION	
			CATCH BASIN
			SEWER MANHOLE
			TRAFFIC FLOW ARROW
			DRAINAGE FLOW ARROW
			EASEMENT LINE
			LEASE LINE
			PROPERTY LINE (P) - RIGHT-OF-WAY LINE (R/W)
			FENCE
			SANITARY SEWER PIPE
			STORM DRAIN PIPE
			WATER LINE
			WATER VALVE
			UNDERGROUND ELECTRICAL
			UNDERGROUND TELEPHONE
			UNDERGROUND CABLE TELEVISION
			UNDERGROUND HOSPITAL COMMUNICATIONS
			PARKING STALL COUNT
			TREE
			STREET LIGHT
			J BOX
			SIGN
			WALL MOUNTED SIGN
			HYDRANT
			ASPHALT PAVEMENT
			CONCRETE PAVEMENT
			LIMITS OF NFS SUBGRADE PER ROAD SECTIONS 2 & 3/C3.01
			CRUSHED GRAVEL SURFACE
			SCORED CONCRETE PAVEMENT
			SECTION MARK
			SECTION NUMBER
			SHEET WHERE SECTION IS DRAWN
			REVISION MARK
			SPOT ELEVATION

nbbj
 111 South Jackson Street
 Seattle, Washington 98104
 (206) 223-5555
 Fax (206) 621-2300

**BARTLETT REGIONAL HOSPITAL
 JUNEAU, ALASKA**



**ANDERSEN BJORNSTAD
 KANE JACOBS • INC**
 CONSULTING ENGINEERS
 800 FIFTH AVENUE
 SUITE 2800
 SEATTLE, WASHINGTON
 98104-3122
 TEL: 340-2255
 FAX: 340-2266



**CONSTRUCTION
 DOCUMENTS
 BID SET**

MAY 17, 2004

Number	Date	By	Description of Revisions

Sheet Title
COVER SHEET

Scale	AS SHOWN
Designed	JRP
Drawn	JRP
Date	5/17/04
Checked	JRP
Approved By	JRP
Job Number	24972.00

C1.00

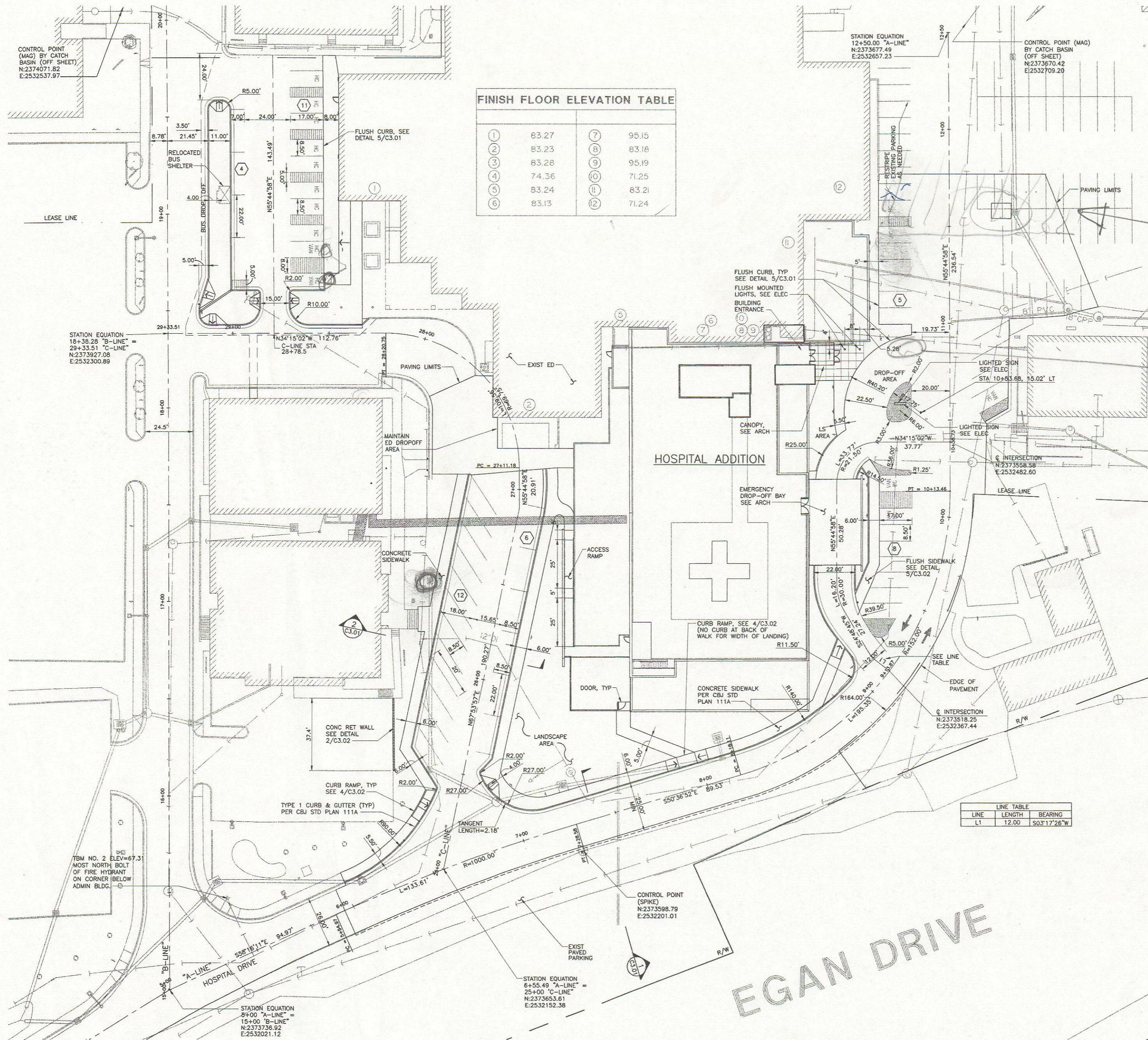
**BARTLETT REGIONAL HOSPITAL
 JUNEAU, ALASKA**



**ANDERSEN BJORNSTAD
 KANE JACOBS • INC**
 CONSULTING ENGINEERS
 800 FIFTH AVENUE
 SUITE 3800
 SEATTLE, WASHINGTON
 98104-3122
 TEL: 340-2255
 FAX: 340-2266

**CONSTRUCTION
 DOCUMENTS
 BID SET**

MAY 17, 2004



FINISH FLOOR ELEVATION TABLE

1	83.27	7	95.15
2	83.23	8	83.18
3	83.28	9	95.19
4	74.36	10	71.25
5	83.24	11	83.21
6	83.13	12	71.24

LINE TABLE

LINE	LENGTH	BEARING
L1	12.00	S03°17'26"W

NOTES:

- SEE ARCH PLAN APO.10 FOR PHASING OF SITE WORK.
- STALL COUNT

TOTAL	57
STANDARD	40
HANDICAP	17
VAN	5
- ALL DIMENSIONS TO FACE OF CURB.

Number Date By Description of Revisions

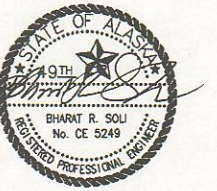
Sheet Title
 SITE PLAN

Scale AS SHOWN
 Designed JRP Drawn
 Date 5/17/04 Checked JRP
 Approved By Job Number 24972.00

1"=20'
 0' 20' 40' 60'



C3.00



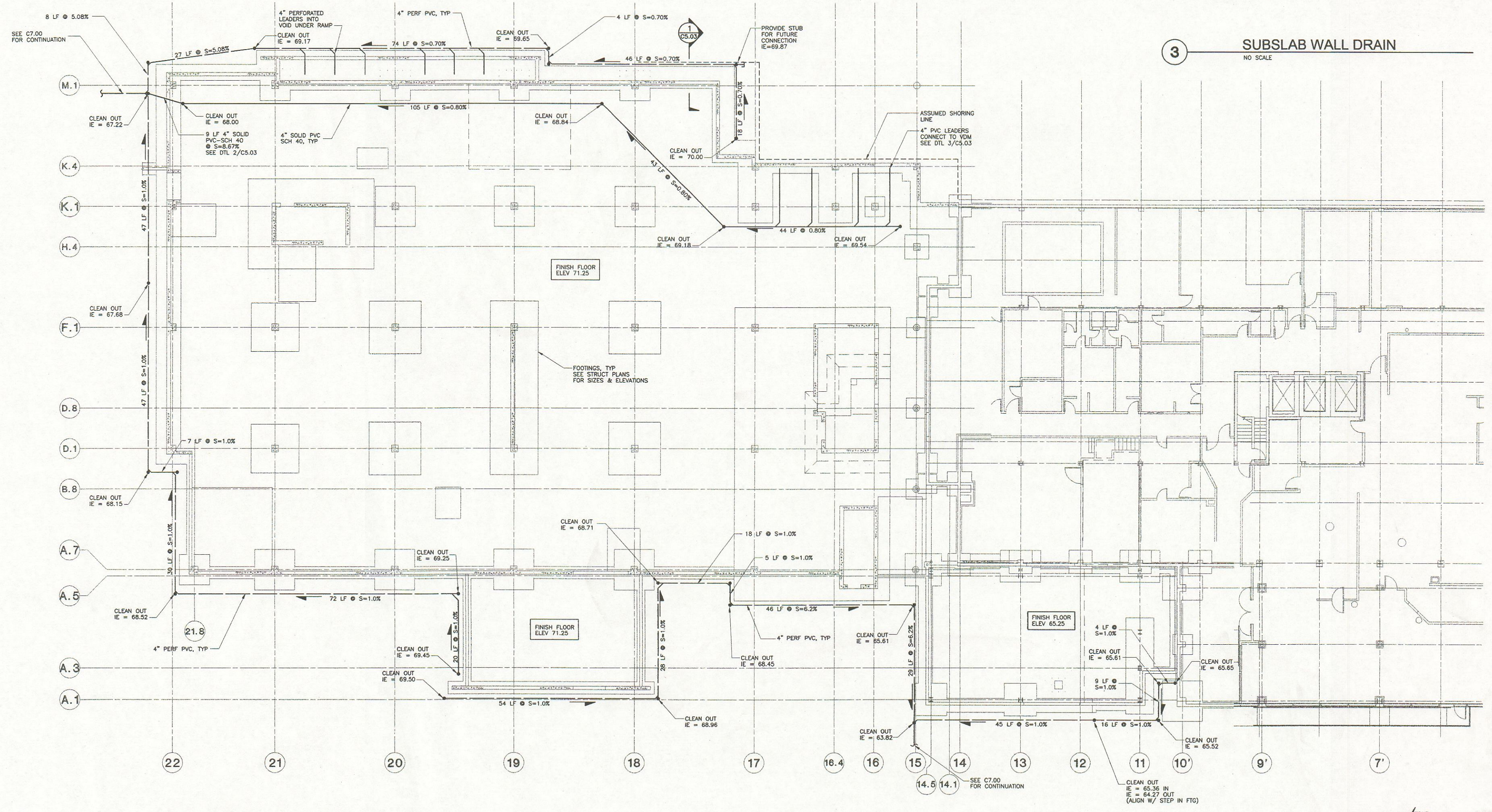
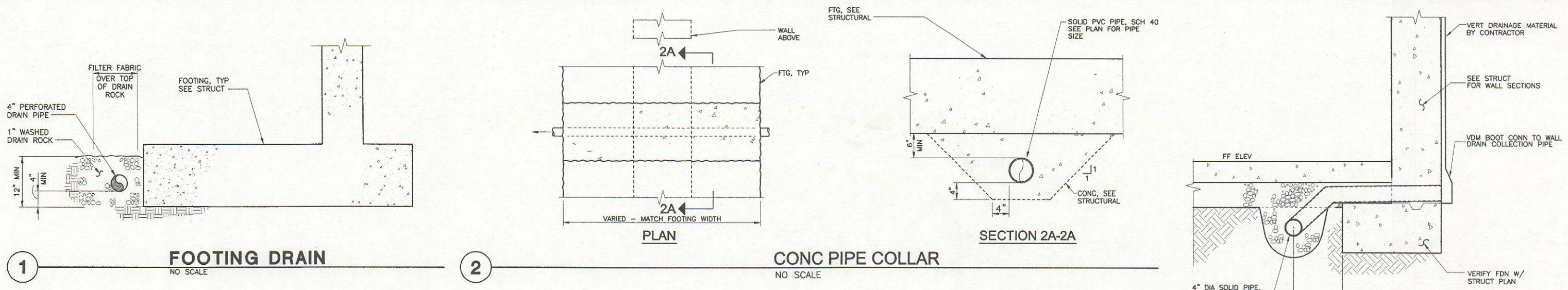
**ANDERSEN BJORNSTAD
 KANE JACOBS • INC**
 CONSULTING ENGINEERS
 800 FIFTH AVENUE
 SUITE 3800
 SEATTLE, WASHINGTON
 98104-3122
 TEL: 340-2255
 FAX: 340-2266

**CONSTRUCTION
 DOCUMENTS
 BID SET**
 MAY 17, 2004

Number	Date	By	Description of Revisions

Sheet Title
**FOUNDATION DRAINAGE
 PLAN**

Scale AS SHOWN
 Designed JRP Draw ADW
 Date 5/17/04 Checked JRP
 Approved By Job Number 24972.00



NOTES:
 1. SEE ARCH PLAN APO.10 FOR PHASING OF SITE WORK.



C5.03