

Agenda of the City and Borough of Juneau  
**Historic Resources Advisory Committee**  
Regular Meeting – March 2, 2022  
Zoom Webinar Meeting  
<https://juneau.zoom.us/j/88172959248>

or:  
1-253-215-8782  
Webinar ID: 881 7295 9248

<b>MEMBERS</b>	
<b>Name</b>	<b>Attendance</b>
Zane Jones	
Shannon Crossley	
Shauna McMahan	
Gary Gillette	
VACANT	
Sarah Hieb	
Olivia Lihou	
Dorene Lorenz	
Chuck Smythe	

<b>STAFF</b>	
<b>Name</b>	<b>Attendance</b>
Beth McKibben	
Niko Sanguinetti	
Scott Ciambor	

- I. Call to Order
- II. Approval of Agenda
- III. Minutes -
- IV. Public Comment
- V. Juneau Townsite Project Update
- VI. Valentine Building – Canopy input
- VII. Committee Comments
- VIII. Adjournment

**Next Meeting – April 6, 2022**

**From:** [Shannon Crossley](#)  
**To:** [Beth McKibben](#)  
**Cc:** [Zane Jones](#); [Scott Ciambor](#); [Sean Boily](#)  
**Subject:** Valentine Building Canopy Color Options  
**Date:** Monday, February 28, 2022 3:17:29 PM  
**Attachments:** [colors for PSX 700\[23467\].pdf](#)  
[EXISTING.tif](#)  
[NWA-2002 VALENTINE BLDG CANOPY PERMIT A2.1.pdf](#)

---

**EXTERNAL E-MAIL: BE CAUTIOUS WHEN OPENING FILES OR FOLLOWING LINKS**

---

Good afternoon!

The Valentine Building canopy project was a pre-development grant NorthWind Architects worked on last year, and we have been asked to help select the steel color for the metal and glass canopy we designed. Our inclination is to maintain the historically white flashing color, to stay with the Valentine's current color pallet without trying to match the red or warm beige. We are not required to obtain consent on a color choice, NorthWind wanted to ask HRAC what their suggestion would be to involve them with the process. (Light or dark, white or black, or use color.)

For Beth to put into the packet and presentation, I have attached several photos, the design of the new canopy and the color chart.

From the design standards "7.21 Use colors and materials that are compatible with the overall design of the building. • Canopy materials shall reflect the style and character of the building. • Use colors that are compatible with the overall color scheme of the facade. Solid colors or simple, muted stripe patterns are appropriate."

Thank you!

**Shannon Crossley** (she/her)  
**NorthWind Architects, LLC**

126 Seward Street  
Juneau, AK 99801

p.907.586.6150 (x208)

f.907.586.6181

[www.northwindarch.com](http://www.northwindarch.com)

[www.facebook.com/northwindarchitects](https://www.facebook.com/northwindarchitects)

*NorthWind Architects acknowledges the Southeast Alaska Native nations upon whose traditional lands we live and work.*

*Our homes and office are located on the traditional lands of the Lingít Aani (Tlingít) people.*

*I kaax gunalchéesh yéi ax toowú yatee. I am thankful for you.*





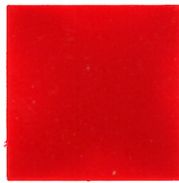


# Standard Colors

# Safety Colors (ANSI Z53.1 - 1979)



**YE-314**  
Offshore Yellow



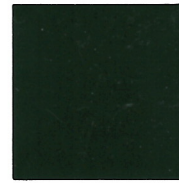
**RD-1**  
Bright Red



**2968**  
Dark Gray



**4829**  
Super Blue



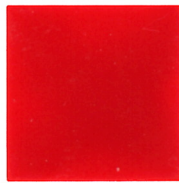
**GN-1**  
Forest Green



**RD-2**  
Safety Red



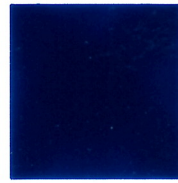
**8557**  
Signal Yellow



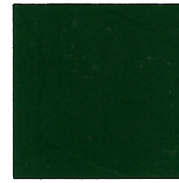
**7522**  
Signal Red



**GR-1**  
Deep Gray



**4752**  
Cobalt Blue



**5506**  
Medium Green



**6900**  
Int'l Orange



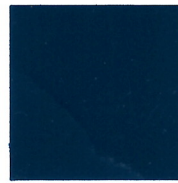
**YE-2**  
Ivory



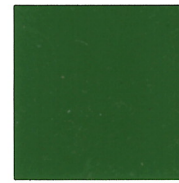
**7821**  
Oxide Red



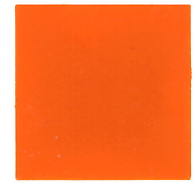
**GR-2**  
Medium Gray



**4200**  
National Blue



**GN-2**  
Meadow Green



**OR-2**  
Safety Orange



**1600**  
Clay Tan



**2531**  
I.M. Gray



**FS26270**  
Haze Gray



**BL-2**  
Deep Blue



**GN-3**  
Medium Green



**YE-3**  
Safety Yellow



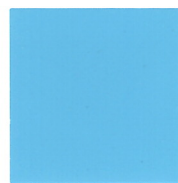
**BR-4**  
Sand



**FS16440**  
Gray



**GR-3**  
Pearl Gray



**BL-4**  
Light Blue



**GN-5**  
Haze Green



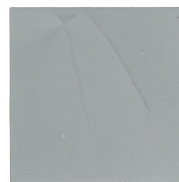
**GN-6**  
Safety Green



**BR-3**  
Buff Brown



**ANSI 170**  
Gray



**2973**  
Light Gray



**BL-5**  
Horizon Blue



**Blue White**

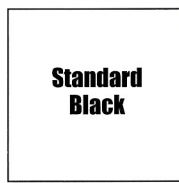


**BL-6**  
Safety Blue



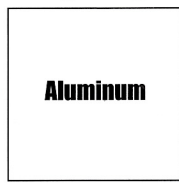
**Standard**  
White

**WH-1**  
White



**Standard**  
Black

**BK-1**  
Black



**Aluminum**

**AL-1**  
Aluminum



# Custom Colors

						
<b>RT-1402</b>	<b>RT-2901</b>	<b>RT-2402</b>	<b>RT-4805</b>	<b>RT-1904</b>	<b>RT-4901</b>	<b>RT-3404</b>
						
<b>RT-1405</b>	<b>RT-2804</b>	<b>RT-7104</b>	<b>RT-2203</b>	<b>RT-1905</b>	<b>RT-7202</b>	<b>RT-7003</b>
						
<b>RT-1404</b>	<b>RT-8401</b>	<b>RT-4905</b>	<b>RT-2404</b>	<b>RT-7204</b>	<b>RT-1602</b>	<b>RT-3402</b>
						
<b>RT-8601</b>	<b>RT-7503</b>	<b>RT-1504</b>	<b>RT-6201</b>	<b>RT-1804</b>	<b>RT-1803</b>	<b>RT-3401</b>
						
<b>RT-8203</b>	<b>RT-8603</b>	<b>RT-1505</b>	<b>RT-2305</b>	<b>RT-1704</b>	<b>RT-1702</b>	<b>RT-1503</b>
						
<b>RT-8302</b>	<b>RT-1103</b>	<b>RT-8205</b>	<b>RT-7605</b>	<b>RT-7205</b>	<b>RT-1705</b>	<b>RT-4903</b>
						
<b>RT-7502</b>	<b>RT-7505</b>	<b>RT-8304</b>	<b>RT-2405</b>	<b>RT-8904</b>	<b>RT-8903</b>	<b>RT-1501</b>
						
<b>RT-8204</b>	<b>RT-8104</b>	<b>RT-1104</b>	<b>RT-8703</b>	<b>RT-1805</b>	<b>RT-4902</b>	<b>RT-7005</b>
						
<b>RT-8103</b>	<b>RT-8405</b>	<b>RT-8001</b>	<b>RT-8802</b>	<b>RT-8801</b>	<b>RT-1502</b>	<b>RT-8901</b>

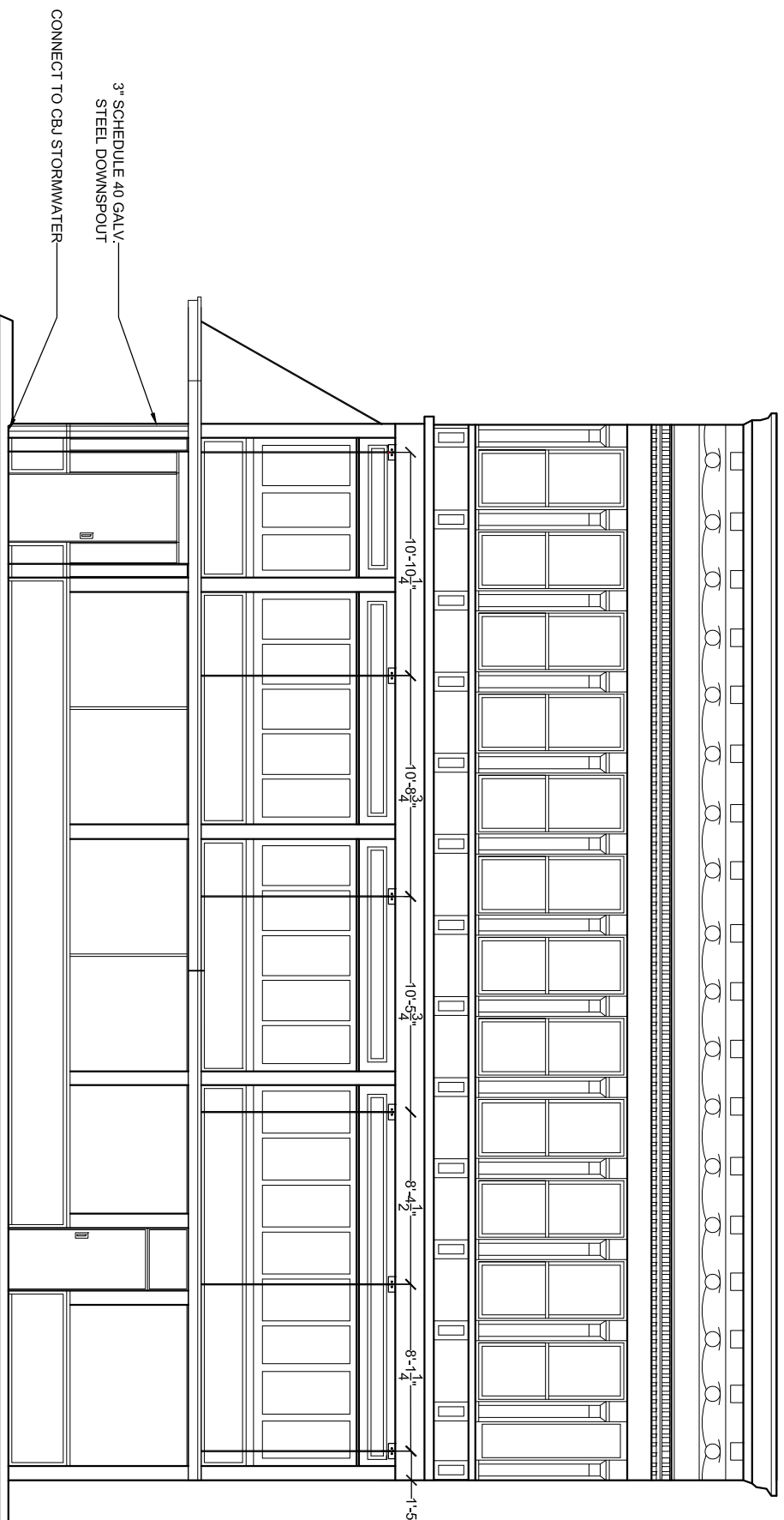
The above colors represent a variety of PPG's Rapid Response tinted colors. For best hiding, two coats may be required over contrasting colors.





GENERAL NOTES:

1. STEEL AND GLASS CANOPY ASSEMBLIES - SEE BOTH ARCHITECTURAL AND STRUCTURAL DETAILING
2. DIMENSIONS TO FACE OF STEEL; U.O.N.
3. FIELD VERIFY DIMENSIONS AT ALL EXISTING CONDITIONS.
4. REPAIR AND PAINT ALL DAMAGED SIDING AND TRIM TO MATCH EXISTING.
5. PAINT ALL EXPOSED GALVANIZED STEEL AFTER INSTALLATION.

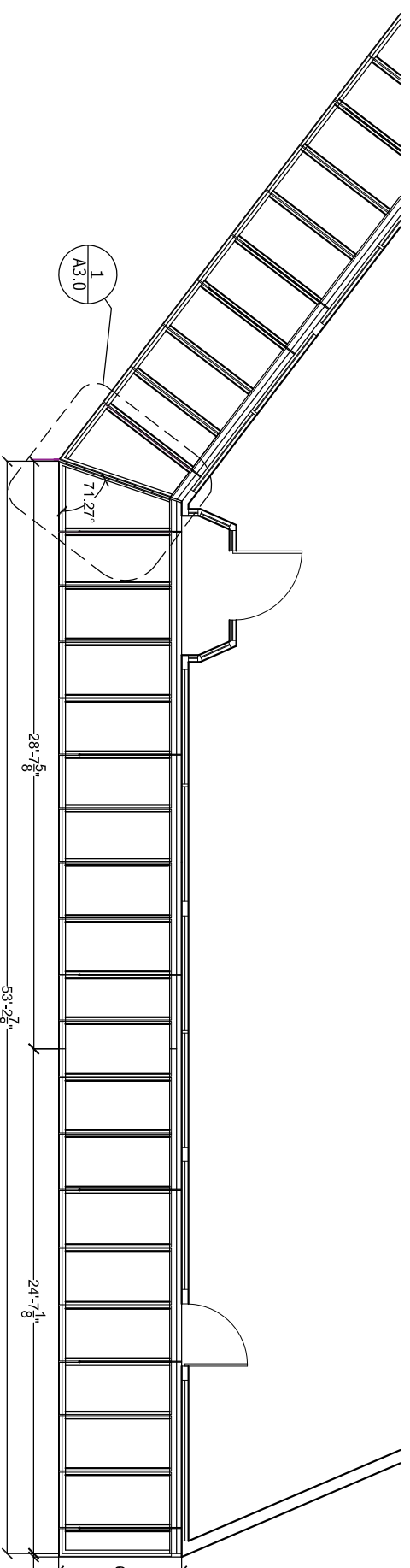
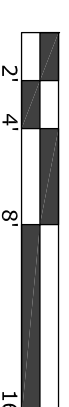


CANOPY 6

CANOPY 7

1  
1/8" = 1'-0"

NEW FRONT STREET CANOPY ELEVATION

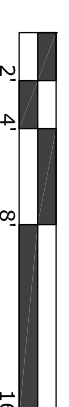


CANOPY 6

CANOPY 7

2  
1/8" = 1'-0"

NEW FRONT STREET CANOPY PLAN



**N**  
**W**

North Wind  
Architects LLC

126 SEWARD ST.  
JUNEAU, AK 99801  
PH #907.586.6150  
FX #907.586.6181  
WWW.NORTHWINDARCH.COM

IF THE ABOVE DIMENSION DOES NOT EQUAL EXACTLY 1", THIS DRAWING HAS BEEN ENLARGED OR REDUCED, AFFECTING ALL LABELLED SCALES.

VALENTINE BLDG CANOPY

NWA - 2002  
JUNEAU, ALASKA

SHEET TITLE  
CANOPY  
ELEVATION+PLAN

DATE June 16, 2021  
REVISION: ...  
CHECKED BY: SMB  
DRAWN: SAP, SCC

SHEET #  
A2.1