



JUNEAU INTERNATIONAL AIRPORT PARKING IMPROVEMENTS

**AIRPORT BOARD
JULY 14, 2022**

CONTENTS

1	Background
2	Existing Conditions
3	Stakeholder Input
4	Concept Design Alternatives
5	Cost Estimate
5	Construction Phasing
5	Questions

BACKGROUND

- Original Parking Lot Construction – Early 1980's

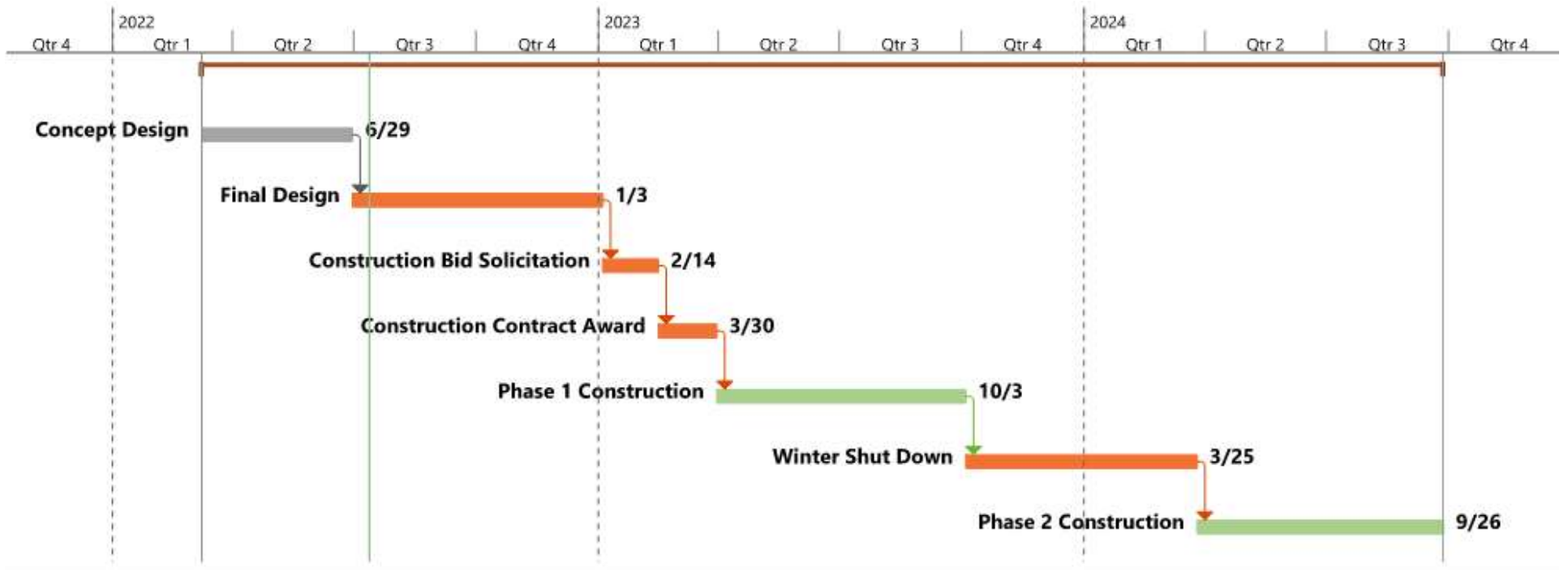
- Incremental Changes
 - ~ 2001 – Driven by 9/11
 - ~ 2011 – Heated Sidewalk – Part of Terminal Expansion Project
 - ~ 2013 – Roadway Resurfacing
 - ~ 2015 – Revenue Control Upgrades by Parking Vendor

WORK AREAS

- Short-term Pay Parking
- Long-term Pay Parking
- Taxi/Ground Transportation
- Employee Parking
- Rental Car Parking
- Shell Simmons Drive
- Yandukin Drive



IMPLEMENTATION SCHEDULE



CONDITIONS

INFRASTRUCTURE IS BEYOND USEFUL LIFE

- Pavement
- Storm Drainage
- Lighting
- Revenue Control

ITEMS TO ADDRESS

- Vehicle Access
- ADA Compliance
- Lighting
- Security
- Infrastructure
- EV Charging

ATTACHMENT #6



ATTACHMENT #6



STAKEHOLDER FEEDBACK

JUNE 1ST & 9TH STAKEHOLDER ENGAGEMENT MEETING

- Parking Lot Access Control
- Vehicle and Pedestrian Traffic Flow
- ADA Accommodations
- Need for Comfortable Parking Space Dimensions
- Airport Commercial Deliveries
- Several Comments Regarding Safety & Security

COMPARISON

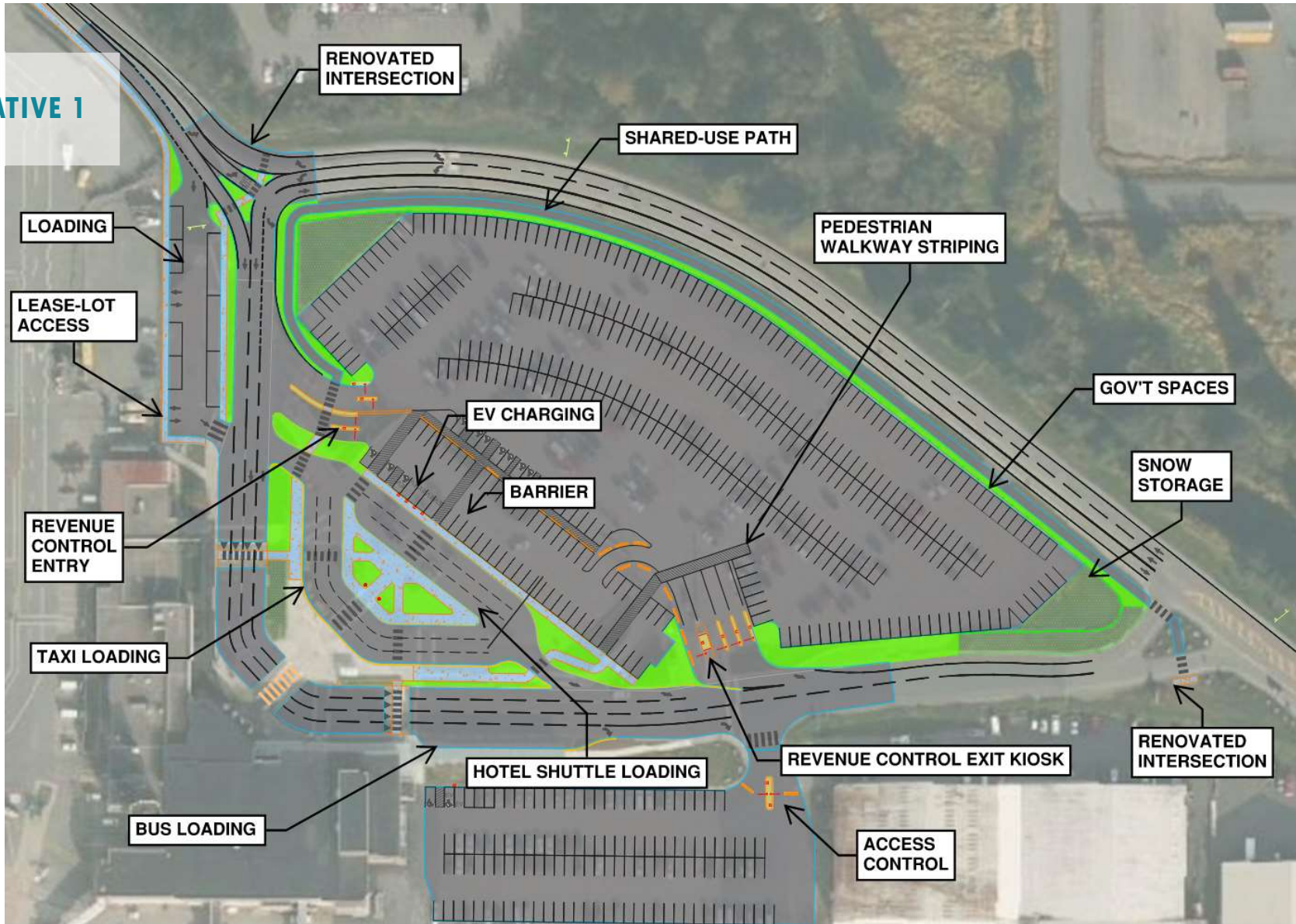
Item	Total Parking	Long Term	Short Term	Rental	Space Size
Alternative 1	547	362	58	125	9 x 18
Alternative 2	533	348	58	127	9 x 18
Alternative 3	641	441	66	134	8.5 x 17
Preferred Alt	542	354	61	127	9 x 18
Existing	526	333*	65	128	9x18

ADA Stalls Included Per Code

*120 Employee spaces included in count

ATTACHMENT #6

ALTERNATIVE 1



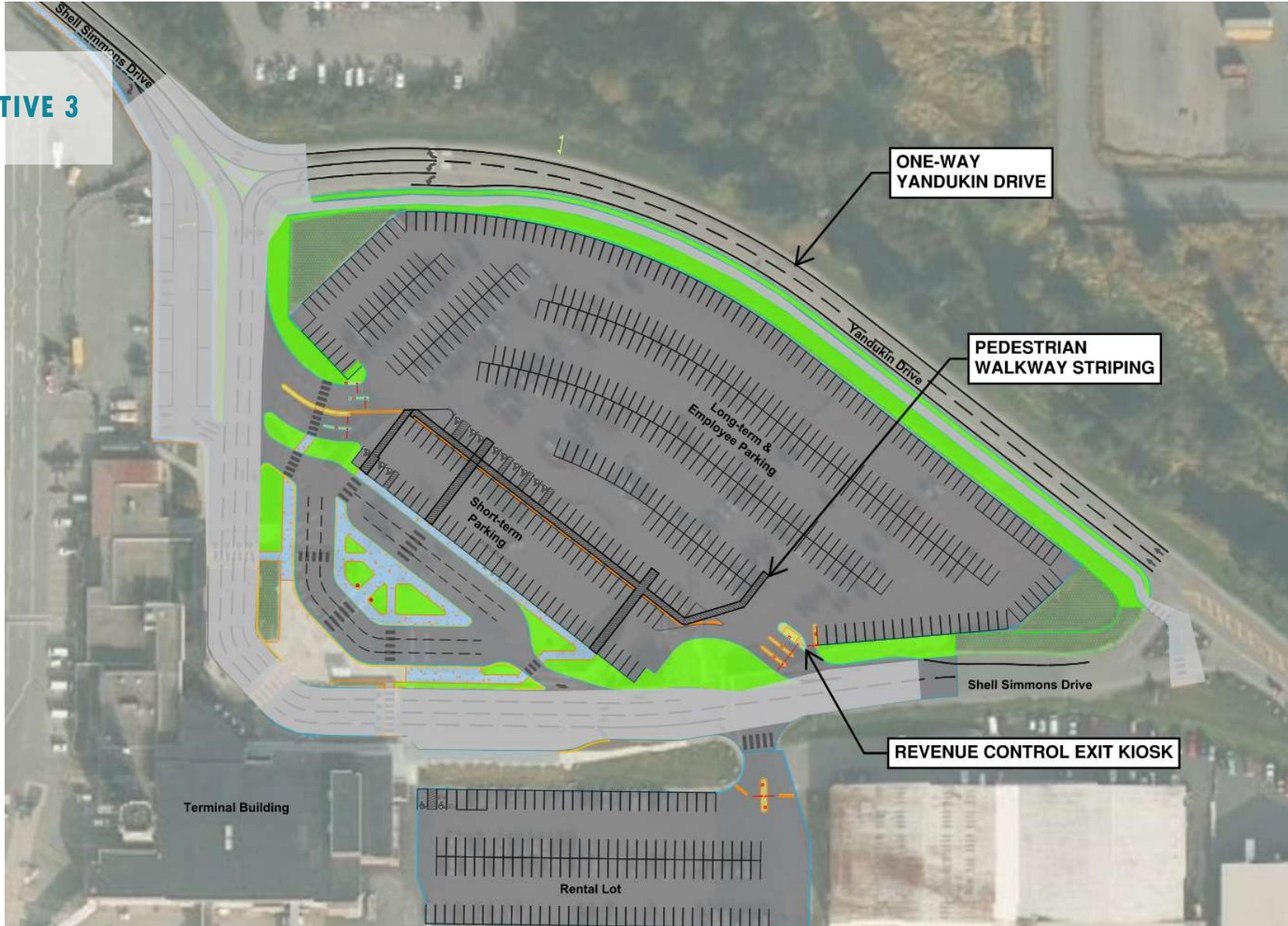
ATTACHMENT #6

ALTERNATIVE 2



ATTACHMENT #6

ALTERNATIVE 3



ATTACHMENT #6

**PREFERRED
ALTERNATIVE**



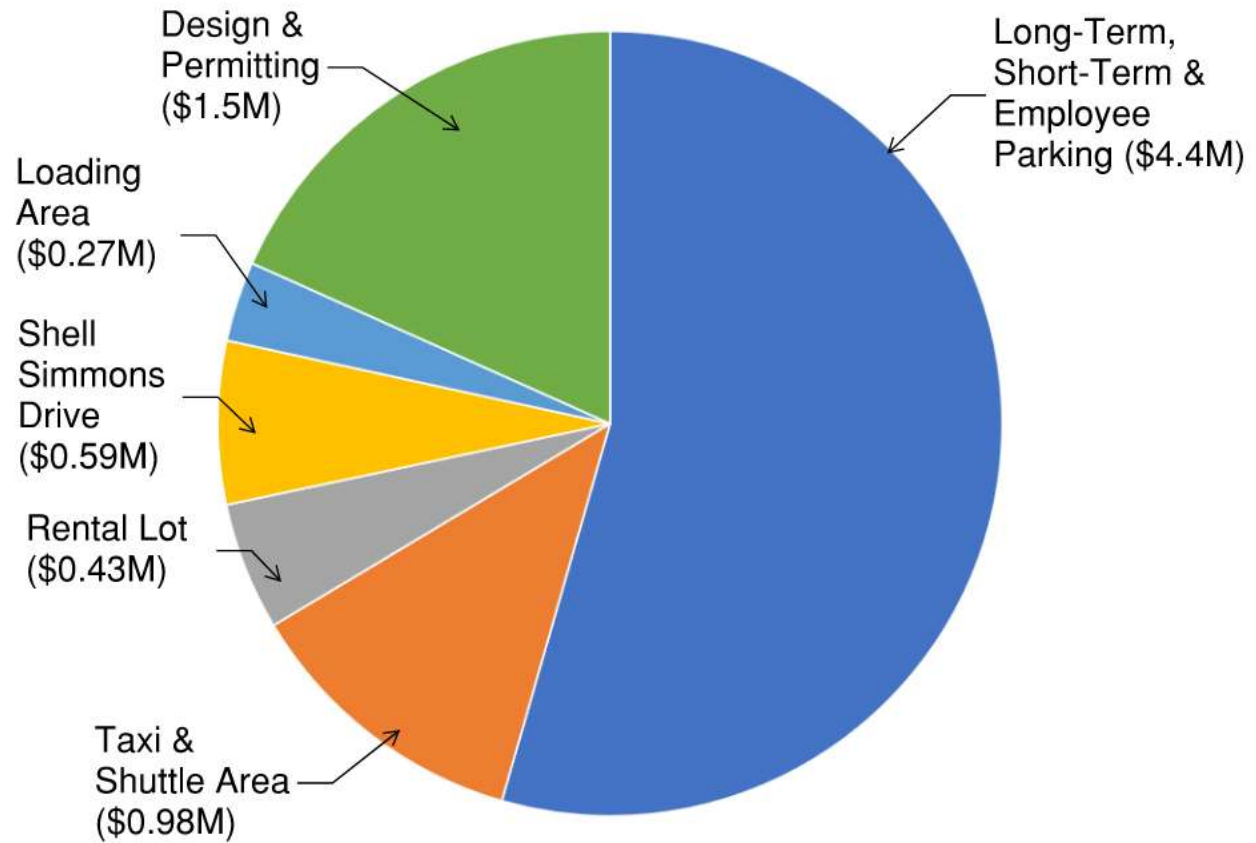
ATTACHMENT #6

ULTIMATE IMPROVEMENTS

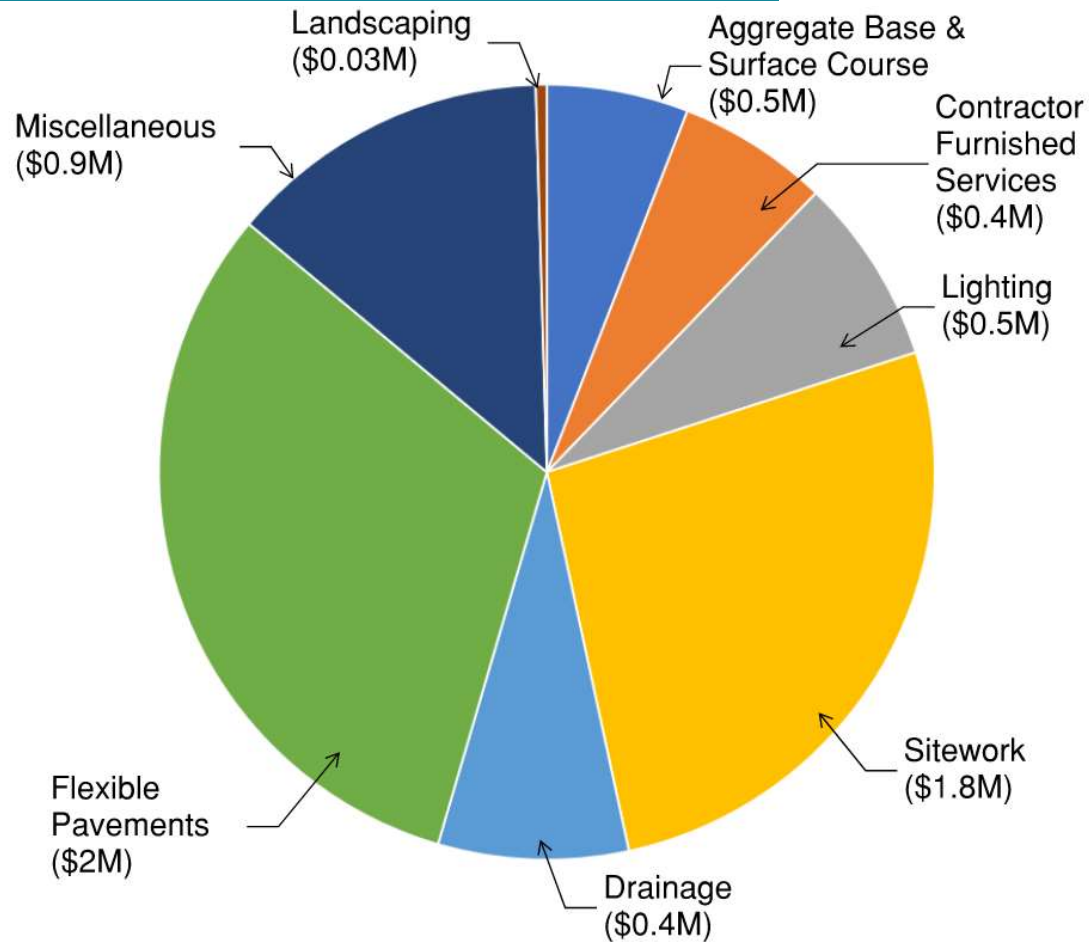


COST ESTIMATE

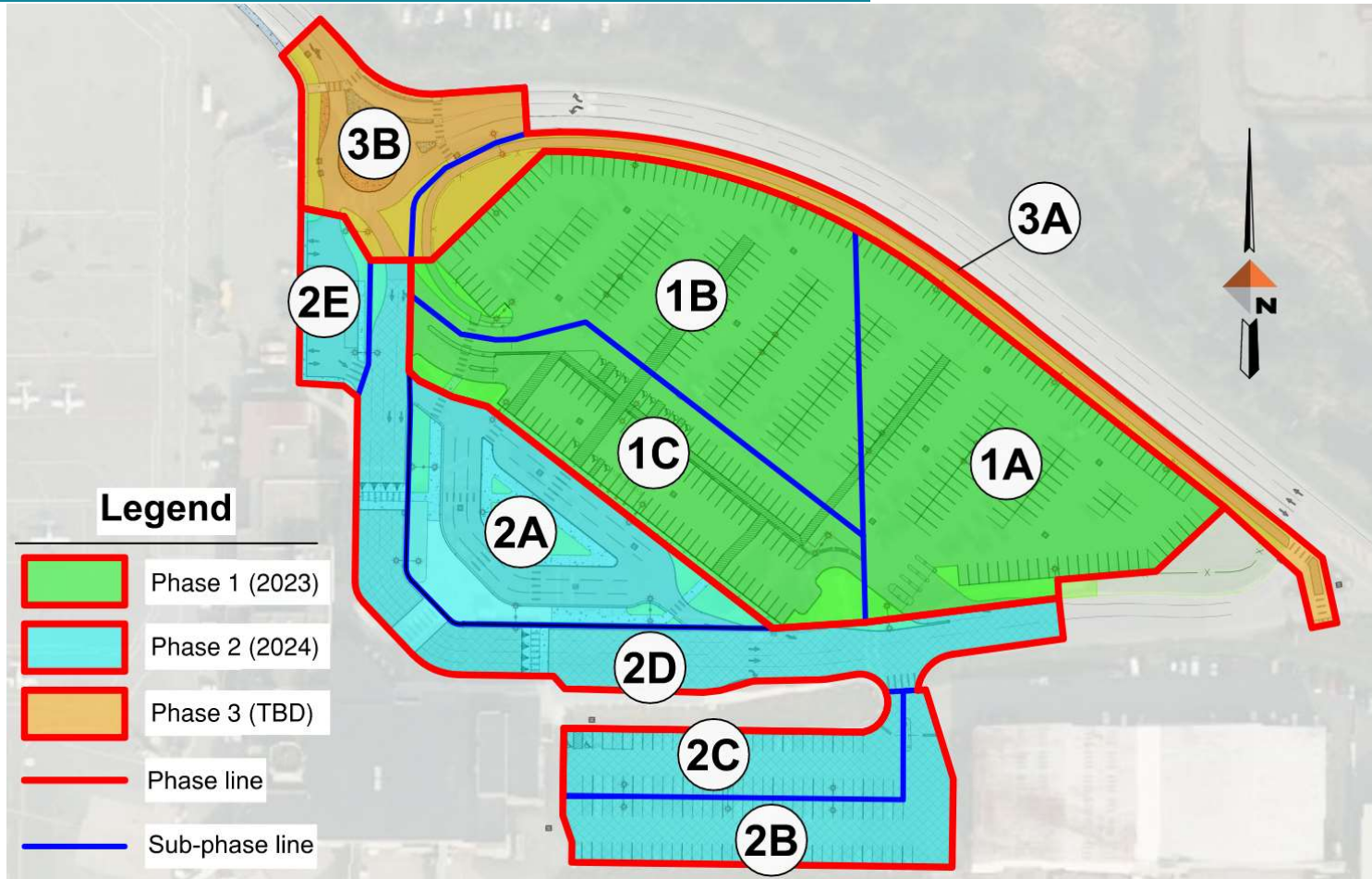
■ \$7.4 - \$9.5M



COST ESTIMATE



CONSTRUCTION PHASING



QUESTIONS