

The WORK for the 2-inch HDPE water service installation from the existing 24-inch DIP water main to the existing AEL&P 2-inch HDPE water service.	Shall be completed and accepted within two (2) days of the beginning of the water shutdown period on May 10 <sup>th</sup> , May 11 <sup>th</sup> , or May 12 <sup>th</sup> , 2022.
All other WORK	August 15, 2022

Item No. 4      SECTION 00310 – BID SCHEDULE  
**Delete** in its entirety and **Replace** with:  
The attached SECTION 00310 – BID SCHEDULE, labeled Addendum No. 4.

Item No. 5      SECTION 00500 – AGREEMENT, Article 2 Contract Completion Time table,  
**Replace** with the following:

<u>Work Description</u>	<u>Completion Date</u>
The WORK for the 2-inch HDPE water service installation from the existing 24-inch DIP water main to the existing AEL&P 2-inch HDPE water service.	Shall be completed and accepted within two (2) days of the beginning of the water shutdown period on May 10 <sup>th</sup> , May 11 <sup>th</sup> , or May 12 <sup>th</sup> , 2022.
All other WORK	August 15, 2022

Item No. 6      SPECIAL PROVISIONS, SECTION 01010 – SUMMARY OF WORK, Article 1.2  
WORK COVERED BY CONTRACT DOCUMENTS, Paragraph B.  
**Replace** Paragraph B with the following:

“B.      The installation of the 2” HDPE water service from the existing 24-inch DIP water main to the existing AEL&P 2-Inch HDPE water service shall be completed and accepted during one, eight hour window on May 10<sup>th</sup>, May 11<sup>th</sup>, or May 12<sup>th</sup> of 2022. All other WORK on this project must be completed by August 15, 2022.”

Item No. 7      SPECIAL PROVISIONS, SECTION 01025 – MEASUREMENT AND PAYMENT,  
PART 1 – GENERAL. **Add** the following:

“2.31    2-INCH HDPE WATER SERVICE (Pay Item 2605.3) PRICE BASED ON  
QUANTITY, EACH

- A. Measurement for payment for 2-Inch HDPE Water Service will be the actual number of 2-Inch HDPE water services satisfactorily installed as shown on the Drawings, and as directed by the ENGINEER.
- B. 2-Inch HDPE Water Service WORK includes field locating the existing 2” HDPE water service to AEL&P, installing a 2x2x2 butt fused tee, installing a 2” HDPE water service, installing 2” curb stop with valve box to surface, field locating the existing 24” DIP water main, coordination with the CBJ Water Department to hot tap the main, installing new 2x24 service saddle with corp stop, trace wire, and all WORK necessary to install a complete water service at the locations shown on the Drawings.
- C. Trench excavation, bedding, backfill and chlorination and pressure testing shall be considered incidental to this Pay Item.
- D. Payment for 2-Inch HDPE Water Service shall be made at the Unit Price named in the Bid Schedule under Pay Item No. 2605.3, which payment will constitute full compensation for all WORK described in Section 02605 – Water Services, as shown on the Drawings and as directed by the ENGINEER.”

**DRAWINGS:**

- Item No. 8 SHEET C001, COVER SHEET, "SHEET INDEX" Table.  
**Add** the following to the Sheet Index Table:

C106	2-INCH WATER SERVICE CONNECTION DETAILS
------	---

- Item No. 9 SHEET C105, WATER LINE CONNECTION DETAILS  
**Delete** in its entirety and **Replace** with:  
The attached SHEET C105, titled "WATER LINE CONNECTION DETAILS", revised per Addendum No. 4 dated 02/10/2022.
- Item No. 10 **Add** the attached drawing sheet C106 titled "2-INCH WATER SERVICE CONNECTION DETAILS", Addendum No. 4, dated 2/10/2022.
- Item No. 11 SHEET C203, UTILITY PLAN VIEW  
**Delete** in its entirety and **Replace** with:  
The attached SHEET C203, titled "UTILITY PLAN VIEW", revised per Addendum No. 4 dated 02/10/2022.

By:   
Caleb Comas,  
Contract Administrator

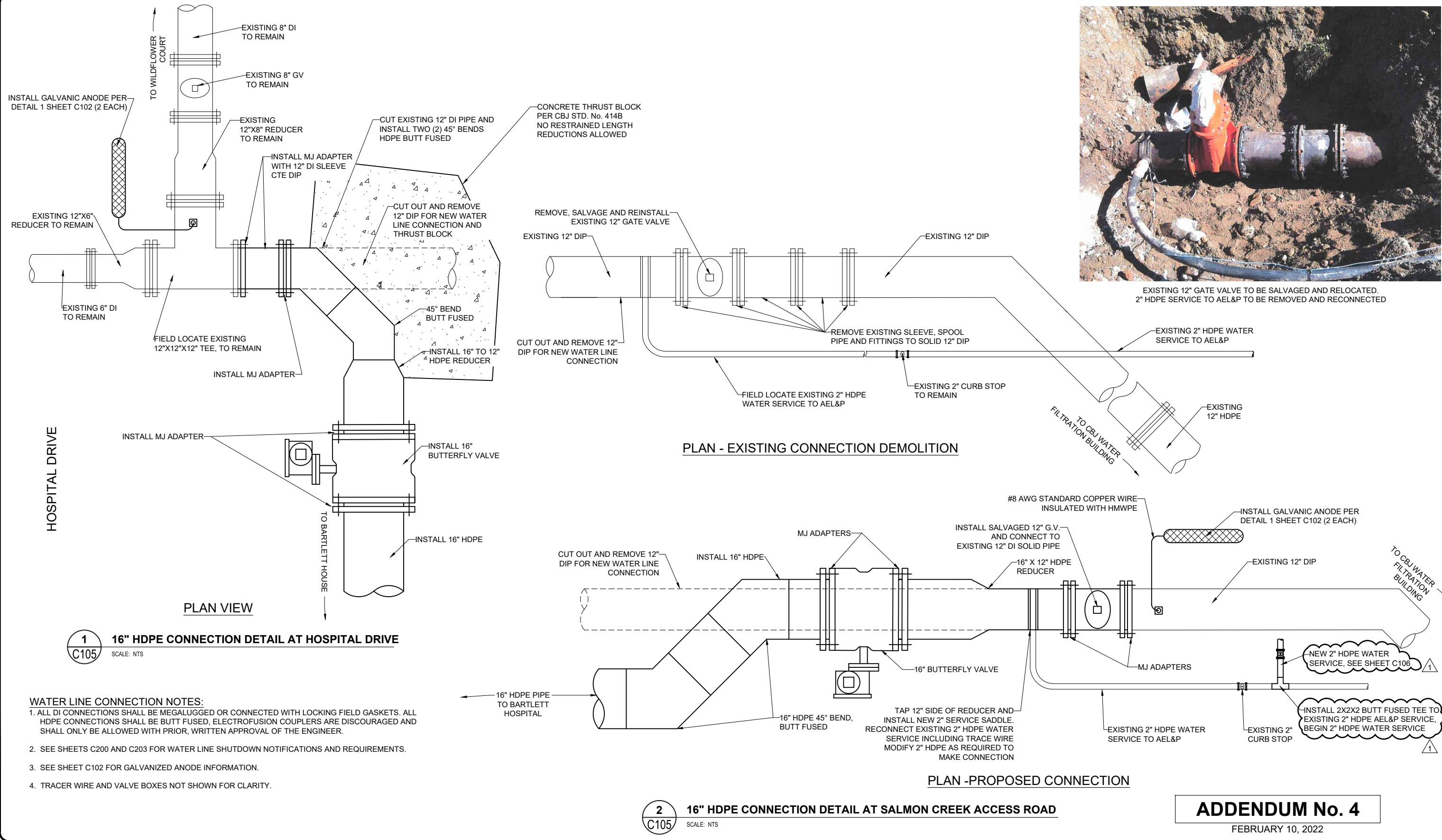
Total number of pages contained within this Addendum: 7

**SECTION 00310 - BID SCHEDULE**

PAY ITEM NO.	PAY ITEM DESCRIPTION	PAY UNIT	APPROX. QUANTITY	UNIT PRICE		AMOUNT	
				DOLLARS	CENTS	DOLLARS	CENTS
1505.1	Mobilization	Lump Sum	All Req'd	LUMP	SUM		
1550.1	Traffic Control	Lump Sum	All Req'd	LUMP	SUM		
1570.1	Erosion and Sediment Control	Lump Sum	All Req'd	LUMP	SUM		
2202.1	Sideslopes and Ditch Grading	Lump Sum	All Req'd	LUMP	SUM		
2202.2	Road Cleaning and Mining Area Restoration Gurantee	Contingent Sum	All Req'd	Contingent	Sum	\$5,000	00
2204.1	Base Course, Grading D-1	Ton	338				
2401.1	Locate Sanitary Sewer Services	Lump Sum	All Req'd	LUMP	SUM		
2401.2	Sanitary Sewer Pipe, 4-Inch PVC	LF	207				
2401.3	Sanitary Sewer Pipe, 8-Inch PVC	LF	281				
2401.4	Sanitary Sewer Cleanout	Each	4				
2402.1	Sanitary Sewer Manhole, Type I With Fiberglass Base Liner	Each	1				
2402.2	Sanitary Sewer Manhole, Drop Inlet With Fiberglass Base Liner	Each	2				
2501.1	12-Inch Pipe Culvert	LF	15				
2601.1	16-Inch HDPE Water Pipe	LF	570				
2601.2	Connect to Existing Water Pipe	Each	2				
2601.3	Corrosion Protection	Each	6				
2601.4	Temporary Water System	Lump Sum	All Req'd	LUMP	SUM		
2602.1	16-Inch Butterfly Valve	Each	4				
2603.1	Fire Hydrant Assembly with Access Pad	Each	1				
2605.1	Bartlett House 6-Inch Water Service	Each	1				
2605.2	AEL&P 2-Inch Water Service Removal and Reconnection	Each	1				
2605.3	2-Inch HDPE Water Service	Each	1				
2607.1	Pipe Insulation	Board	30				
2702.1	Construction Surveying	Lump Sum	All Req'd	LUMP	SUM		
2707.1	Remove and Reset Chain Link Fence	LF	16				
2709.1	Topsoil	CY	29				
2709.2	Topsoil Finish Grading	MH	14				
2710.1	Seeding, Hydraulic Method, Type III	SU	1				
2716.1	Remove and Dispose of Storm and Sanitary Sewer Pipe	Lump Sum	All Req'd	LUMP	SUM		
2716.2	Remove and Dispose of Existing Water Pipe or Fill With Slurry	Lump Sum	All Req'd	LUMP	SUM		
2717.1	Remove and Dispose of Sanitary Sewer Structures	Lump Sum	All Req'd	LUMP	SUM		
2722.1	Utility Conduit Relocation	Each	20				
2801.1	A.C. Pavement, Type II-A, Class B	Ton	112				
2801.2	A.C. Pavement for Sidewalks and Hydrant Pads	SY	94				
2806.1	Remove Existing Asphalt Surfacing	SY	495				

**TOTAL BID \$** \_\_\_\_\_

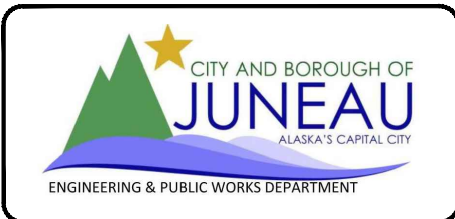
**COMPANY NAME:** \_\_\_\_\_



N:\Projects\10323-21285-CBJ\_BRL\_PRC\CC4001\res\121285\kdwg PLOT February 10, 2022 at 3:24pm

DESIGN	JMP
DRAWN	JMK
CHECK	JMP
APPROVED	JMP
FILE:	

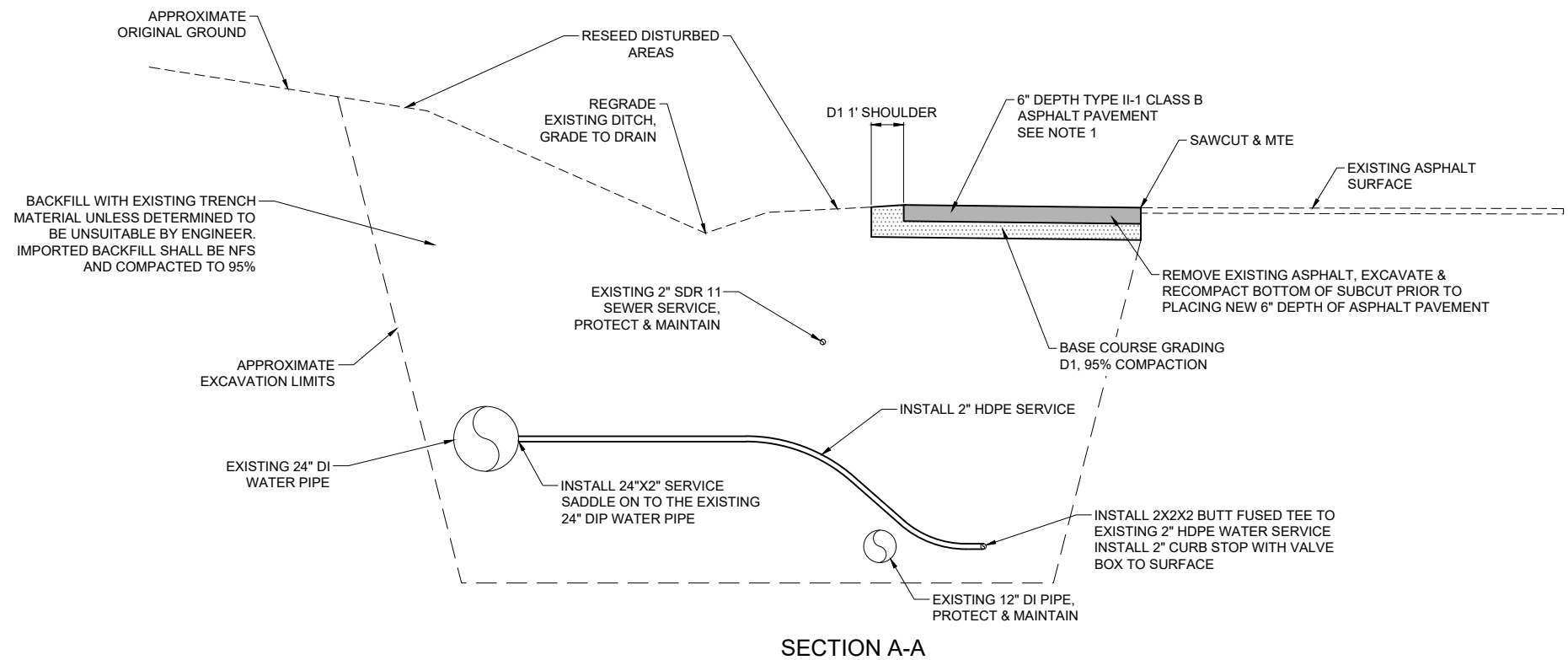
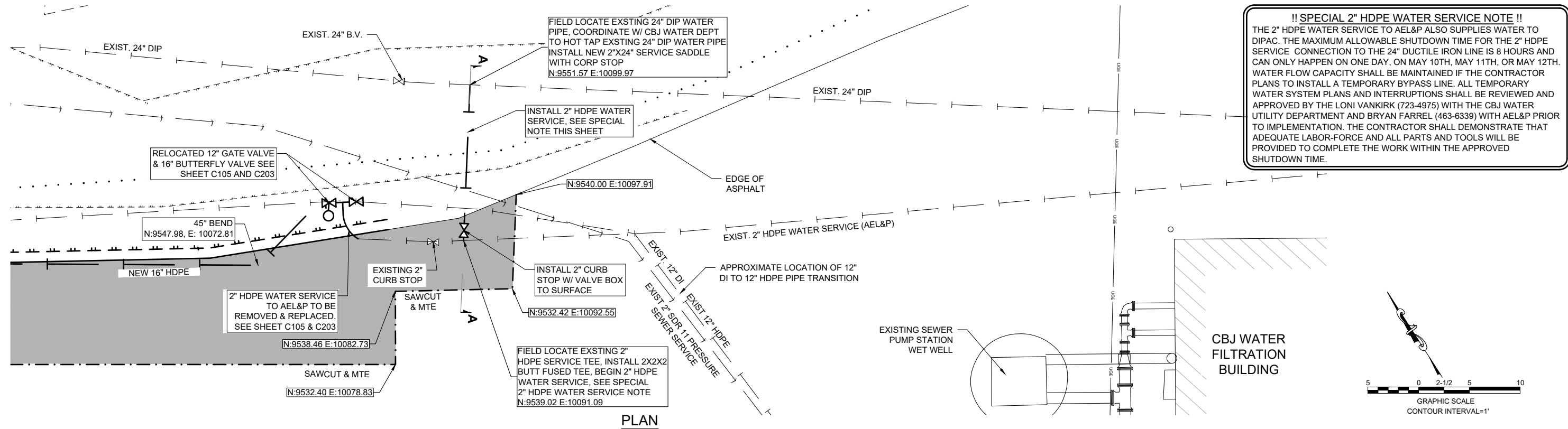
1	2/10/22	REVISIONS PER 2" HDPE SERVICE CONNECTION.
No.	DATE	REVISION



BARTLETT REGIONAL HOSPITAL  
WATER AND SEWER UPGRADES  
  
CBJ CONTRACT No. BE22-185  
CITY & BOROUGH OF JUNEAU, ALASKA

**WATER LINE  
CONNECTION DETAILS**

DATE:	Feb 10, 2022
PDC No.	21285JN
SHEET	<b>C105</b>



- NOTES:
1. PLACE AND COMPACT 6" OF TYPE II-A CLASS B ASPHALT PAVEMENT IN 2" LIFTS. POLYMERIZED BITUMINOUS JOINT ADHESIVE COMPLYING W/ TABLE 702-2 OF THE ALASKA STANDARD SPECS FOR HIGHWAY CONSTRUCTION 2017 IS TO BE PLACED IN BETWEEN LAYERS OF ASPHALT.
  2. THE EXISTING 12" DIP IS REPORTED TO BE APPROXIMATELY 10' DEEP AT THIS LOCATION.
  3. PROVIDE ALL ADAPTERS, ELBOWS, AND OTHER FITTINGS NECESSARY TO CONNECT TO DISSIMILAR PIPE SIZES, MATERIALS AND DEPTHS.
  4. DISTURBED AREAS TO RECEIVE 3" DEPTH TOPSOIL AND SEED.
  5. SEE SHEETS C105 AND C203 FOR ADDITIONAL INFORMATION.

1  
C106

2" HDPE SERVICE CONNECTION

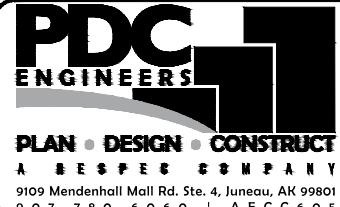
SCALE: NTS

ADDENDUM No. 4

FEBRUARY 10, 2022

DESIGN JMP  
DRAWN JMK  
CHECK JMP  
APPROVED JMP  
FILE:

1	2/10/22	ADDED DETAIL SHEET FOR 2" HDPE SERVICE CONNECTION.
No.	DATE	REVISION



BARTLETT REGIONAL HOSPITAL  
WATER AND SEWER UPGRADES

CBJ CONTRACT No. BE22-185  
CITY & BOROUGH OF JUNEAU, ALASKA

2-INCH WATER SERVICE  
CONNECTION DETAILS

DATE: Feb 10, 2022  
PDC No. 21285JN  
SHEET  
C106

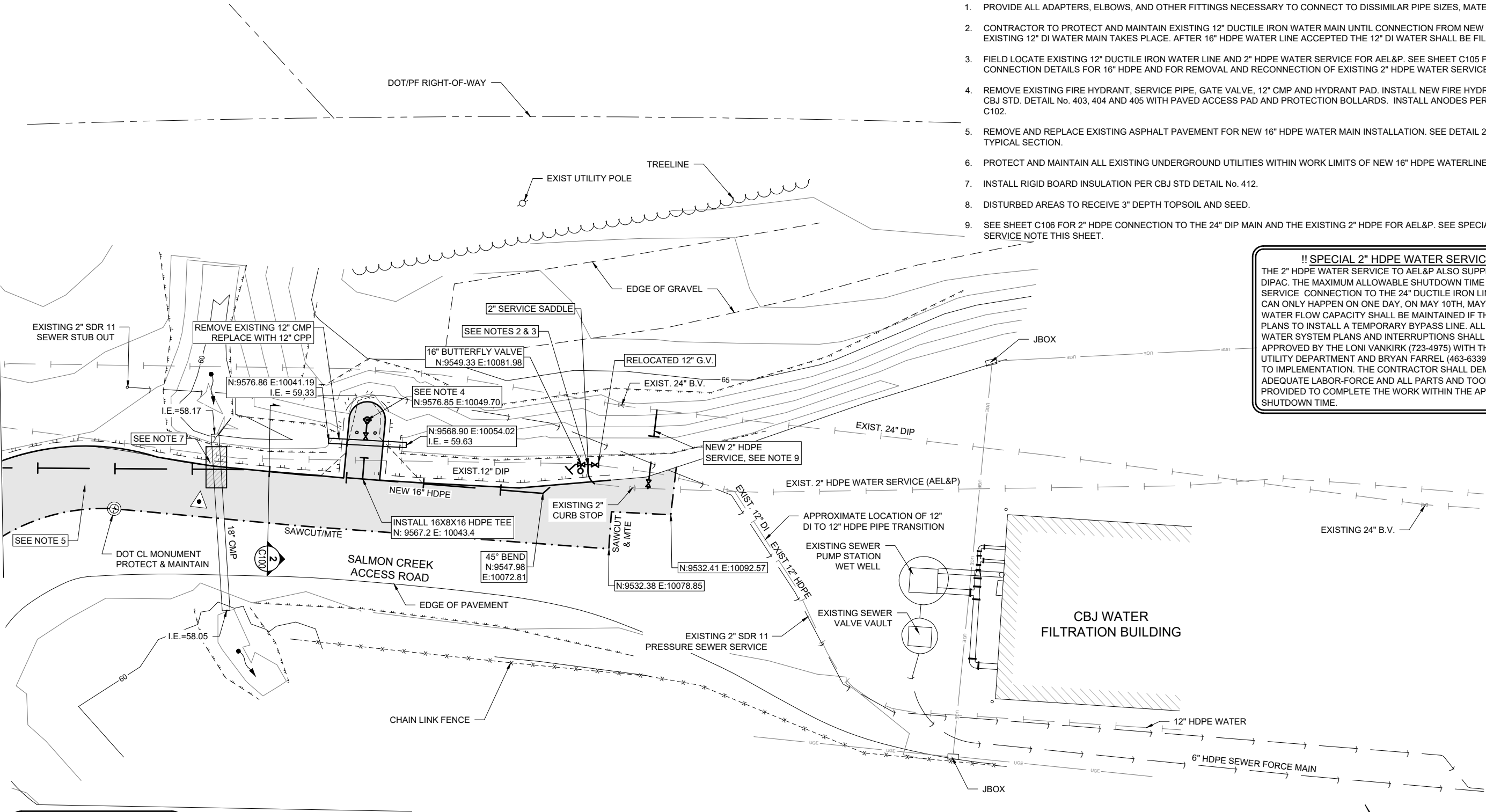


SHEET NOTES

1. PROVIDE ALL ADAPTERS, ELBOWS, AND OTHER FITTINGS NECESSARY TO CONNECT TO DISSIMILAR PIPE SIZES, MATERIALS AND DEPTHS.
2. CONTRACTOR TO PROTECT AND MAINTAIN EXISTING 12" DUCTILE IRON WATER MAIN UNTIL CONNECTION FROM NEW 16" HDPE TO EXISTING 12" DI WATER MAIN TAKES PLACE. AFTER 16" HDPE WATER LINE ACCEPTED THE 12" DI WATER SHALL BE FILLED WITH SLURRY.
3. FIELD LOCATE EXISTING 12" DUCTILE IRON WATER LINE AND 2" HDPE WATER SERVICE FOR AEL&P. SEE SHEET C105 FOR WATER LINE CONNECTION DETAILS FOR 16" HDPE AND FOR REMOVAL AND RECONNECTION OF EXISTING 2" HDPE WATER SERVICE FOR AEL&P.
4. REMOVE EXISTING FIRE HYDRANT, SERVICE PIPE, GATE VALVE, 12" CMP AND HYDRANT PAD. INSTALL NEW FIRE HYDRANT ASSEMBLY PER CBJ STD. DETAIL No. 403, 404 AND 405 WITH PAVED ACCESS PAD AND PROTECTION BOLLARDS. INSTALL ANODES PER DETAIL 2, SHEET C102.
5. REMOVE AND REPLACE EXISTING ASPHALT PAVEMENT FOR NEW 16" HDPE WATER MAIN INSTALLATION. SEE DETAIL 2 ON SHEET C100 FOR TYPICAL SECTION.
6. PROTECT AND MAINTAIN ALL EXISTING UNDERGROUND UTILITIES WITHIN WORK LIMITS OF NEW 16" HDPE WATERLINE.
7. INSTALL RIGID BOARD INSULATION PER CBJ STD DETAIL No. 412.
8. DISTURBED AREAS TO RECEIVE 3" DEPTH TOPSOIL AND SEED.
9. SEE SHEET C106 FOR 2" HDPE CONNECTION TO THE 24" DIP MAIN AND THE EXISTING 2" HDPE FOR AEL&P. SEE SPECIAL 2" HDPE WATER SERVICE NOTE THIS SHEET.

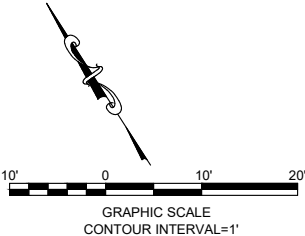
**!! SPECIAL 2" HDPE WATER SERVICE NOTE !!**  
THE 2" HDPE WATER SERVICE TO AEL&P ALSO SUPPLIES WATER TO DIPAC. THE MAXIMUM ALLOWABLE SHUTDOWN TIME FOR THE 2" HDPE SERVICE CONNECTION TO THE 24" DUCTILE IRON LINE IS 8 HOURS AND CAN ONLY HAPPEN ON ONE DAY, ON MAY 10TH, MAY 11TH, OR MAY 12TH. WATER FLOW CAPACITY SHALL BE MAINTAINED IF THE CONTRACTOR PLANS TO INSTALL A TEMPORARY BYPASS LINE. ALL TEMPORARY WATER SYSTEM PLANS AND INTERRUPTIONS SHALL BE REVIEWED AND APPROVED BY THE LONI VANKIRK (723-4975) WITH THE CBJ WATER UTILITY DEPARTMENT AND BRYAN FARREL (463-6339) WITH AEL&P PRIOR TO IMPLEMENTATION. THE CONTRACTOR SHALL DEMONSTRATE THAT ADEQUATE LABOR-FORCE AND ALL PARTS AND TOOLS WILL BE PROVIDED TO COMPLETE THE WORK WITHIN THE APPROVED SHUTDOWN TIME.

MATCHLINE SHEET C202



ADDENDUM No. 4

FEBRUARY 10, 2022



DIAL BEFORE YOU DIG!  
586-1333

U/G POWER, TELEPHONE & T.V.  
SHOWN ON THIS DRAWING INDICATE  
EXISTENCE ONLY AND DO NOT  
SUBSTITUTE FOR FIELD LOCATES  
FOR ACS AND GCI LOCATES  
DIAL THE 811 ALASKA DIGLINE

EGAN DRIVE

DESIGN JMP  
DRAWN JMK  
CHECK JMP  
APPROVED JMP  
FILE:

No.	DATE	REVISION
1	2/1/22	REVISED SPECIAL WATER MAIN NOTE PER ADDENDUM No.2
2	2/10/22	REVISED SHEET PER 2" HDPE WATER SERVICE CONNECTION



BARTLETT REGIONAL HOSPITAL  
WATER AND SEWER UPGRADES

CBJ CONTRACT No. BE22-185  
CITY & BOROUGH OF JUNEAU, ALASKA

UTILITY PLAN VIEW

DATE: Feb 10, 2022  
PDC No. 21285JN  
SHEET  
**C203**