



**PARKS & RECREATION ADVISORY COMMITTEE
MEETING AGENDA
TUESDAY, MARCH 1, 2022
5:30 P.M.
ZOOM WEBINAR**

This meeting will take place virtually via **Zoom Webinar**. To join the Zoom Webinar, go to <https://juneau.zoom.us/j/94184441385> or call: 1 253-215-8782. **Webinar ID: 941 8444 1385**. Members of the public wishing to provide public comment during the meeting can do so by clicking the “Raise Hand” button (online Zoom Webinar) or press *9 (telephone).

Agenda Item	Presenter	Action Requested
I. Call to Order	C. Mertl	
II. Approval of Agenda Agenda Changes	C. Mertl	<i>If no changes: Motion to approve</i>
III. Approval of Minutes Meeting of February 1, 2022		
IV. Public Participation on Non-Agenda Items	C. Mertl	
V. New Business Trail Mix Annual Work Report Amalga Meadows Master Plan	Ryan O’Shaughnessy Kristi West	
VI. Unfinished Business		
VII. Staff Reports		
VIII. Committee, Liaison, and Board Member Reports Chair Report Liaison to the Assembly Board Member Liaisons Other Board Member Business	C. Mertl Alicia Hughes-Skandijis Liaisons All	
IX. Adjournment	C. Mertl	



TO: Parks & Recreation Advisory Committee
FROM: George Schaaf, Parks & Recreation Director
DATE: February 25, 2022
RE: March 1, 2022 Meeting

DIRECTOR'S REPORT

Please find enclosed the information supporting your agenda topics for this meeting. The meeting is anticipated to last 60 minutes and will take place via **Zoom Webinar**. To join the Zoom Webinar, go to <https://juneau.zoom.us/j/94184441385> or call 1-253-215-8782. **Webinar ID:** 941 8444 1385.

NEW BUSINESS

A. Trail Mix Annual Work Plan & Update – Presented by R. O’Shaughnessy

Trail Mix maintains and improves all CBJ trails under a memorandum of agreement and annual work plan. Over the course of nearly 30 years, this unique partnership has created a world-class trail system in the Capital City. Trail Mix Executive Director Ryan O’Shaughnessy will provide an update on work completed in 2021, as well as projects planned in 2022.

SUGGESTED MOTION:

None.

B. Amalga Meadows Natural Area Park Master Plan – Presented by K. West

Staff held neighborhood and public meetings from 2016 through 2019, completed the draft master plan for Amalga Meadows Natural Park Area late last year and provided the plan to stakeholders for review and comment. The draft plan and the comments received are included in the packet for tonight’s meeting. Eagle Valley Center Manager Kristi West will present the plan and discuss the comments received during the public process.

SUGGESTED MOTION:

The Parks and Recreation Advisory Committee recommends that the Department approve the Amalga Meadows Natural Area Park Master Plan.

UNFINISHED BUSINESS

None.

A. Operations Update

The following summary of projects, programs, and activities over the last month is provided at the request of the Chair:

- **Aquatics** – Replacement of the pool deck at the Dimond Park Aquatic Center is on track to begin this spring.

Staff from the Aquatics Division and Engineering & Public Works Department are preparing a new bid package with reduced scope to complete critical repairs to Augustus Brown Pool in 2022. An additional closure will be required this year to repair the boiler, which has continued to deteriorate.

The Aquatics Division expects to resume most programming in April, including swim lessons and group exercise programs.

- **Community & Recreation Programs** – The adult Coed Volleyball league is in full swing with 38 teams and over 300 players registered.

Our popular DIY activity, Parks & Recreation's Clue is currently out on the trails! Game #1 was held on the Twin Lakes trail with 112 accusations (it was Chum with the snow shovel in the greenhouse). Game #2 is this weekend (Feb. 25-27) on the Auke Lake Trail with Game #3 will be on the Outer Point Trail, March 11-13.

We are collaborating again with Juneau Education Association (JEA) and the Juneau Public Libraries to bring back StoryPath to the Seawalk at Overstreet Park. This year we will be displaying three books illustrated by Alaskan artists.

- 1) *Who Lives Near A Glacier?*, March 4-6
- 2) *Little Red Snapperhood*, March 18-20
- 3) *You Are Home With Me*, April 1-3

Mark your calendars for Saturday, March 26! Harry Potter and the Sorcerer's Stone will be coming to the Dimond Park Field House for our Movie in the Park program sponsored by JEA.

- **Treadwell Arena** – Bids for the roof replacement project were opened in February. Only one contractor bid on the project and the cost was nearly double the funding available. This is consistent with other large construction projects that have gone out to bid in recent months, and reflects ongoing supply chain issues, lack of contractor capacity, and inflation. We will attempt to re-bid the project next year.

A project to replace the dasher boards around the rink also encountered significantly increased costs: We anticipated replacement would cost about \$122,000, which has now grown to \$200,000. We are proceeding with this project by reallocating a portion of the Department's Fleet & Equipment Reserve Fund from other divisions to Treadwell Arena. The project should begin this summer.

Between the dasher board project in 2022 and roof replacement scheduled for 2023, Treadwell Arena will be unavailable for summer activities, including roller skating, for the next two years.

- **Parks & Trails** – Parks & Landscape staff have been busy with snow removal, winter projects, and supporting the City’s Emergency Operations Center Logistics Section by delivering rapid antigen tests and KN95 masks to community distribution sites.
- **Dimond Park Field House** – Starting March 1, the track hours at the Dimond Park Field House will be extended for the public. The track will now be open on weekends from 11 a.m. – 5 p.m. and weekdays from 8:30 a.m. – 1 p.m. and 3:30 p.m. – 8:30 p.m. Closed on holidays.



PARKS & RECREATION ADVISORY COMMITTEE

TUESDAY, FEBRUARY 1, 2022 – 5:30 PM

Zoom Webinar

I. Call to Order at 5:31 p.m. – C. Mertl, Chair

Present: Josh Anderson, Alex Beebe-Giudice, Makayla Chappell, Kirk Duncan, Emily Haynes, Chris Mertl, Will Muldoon

Absent: Edric Carrillo

Staff Present: George Schaaf, Director; Michele Elfers, Deputy Director; Lauren Verrelli, Recreation & Public Services Manager

II. Agenda Changes – None

III. Approval of Meeting Minutes

- A.** From December 7, 2021 – J. Anderson moves to approve minutes, no objection. ***Minutes adopted.***
- B.** From January 4, 2022 – J. Anderson moves to approve minutes, no objection. ***Minutes adopted.***

IV. Public Participation on Non-Agenda Items – None

V. New Business

A. Juneau Nordic Ski Club Planning

Roman Motyka (JNSC): [*The plan can be found [here](#).*] The JNSC is a non-profit that has been grooming trails and advocating for Nordic skiing for over 30 years and has close to 1000 members. Our five-year goals include the addition of 15+ km of ski trails at higher elevations. Our ten-year goals include an access road to Spaulding Meadows with a shared trailhead and completion of a world-class system of interconnected trails along with warming huts, recreational cabins, and a biathlon range. The next steps are to work with the PRAC, CBJ and other government organizations to plan for the future. We are hoping that CBJ will help support the development of these trails for the benefit of the entire community.

J. Anderson: Your proposed trails intersect with a large snowmobile area. If you are having problems with snowmobiles on Montana Creek what is your plan to mitigate your concerns up in Spaulding Meadows?

Roman Motyka (JNSC): We are waiting on the Master Plan to show us what the motorized and non-motorized boundaries are.

M. Elfers: We have been working on these maps of motorized and non-motorized use in the Montana Creek area and should be available tomorrow.

J. Anderson: I understand there's always been a Nordic zone and snowmobiles zone up in Spaulding but one of the trails you want to use is the Lake Creek Trail which is currently a snowmobile trail. I am all about sharing and I would like to see improvements to Montana Creek and Lake Creek with trails that are made wide enough to ensure Nordic trails remain

intact and allow room for snowmobiles to access the same trails. Everyone needs to understand they're going to have to share these locations. Not sharing Montana Creek and then adding skiers to Lake Creek does not sound equitable.

Roman Motyka (JNSC): That is part of the Master Plan process. For Lake Creek, we were thinking a dual-purpose road to higher elevations where snowmobilers have one direction and Nordic skiers another.

J. Anderson: I agree, if the trail was made wide enough and it was clear that both user groups have their area they will respect that. When one user group tries to displace another user group, they're going to try to protect what's theirs.

E. Haynes: What are your potential funding sources for these trail improvements?

Roman Motyka (JNSC): We have been talking to the USFS about the Great Alaskan Outdoors Act that has been used to rehabilitate trails in the area including funding from CBJ and DNR.

C. Mertl: I want to commend you on this plan. I'm looking for a plan to possibly address management conflict resolution and share trail strategies. If you can nail some of those, then I think this plan is going to be great. In terms of supporting the plan, it would help us understand what your priorities are and costs. I would recommend waiting on publishing this until after the Montana Creek Master Plan is completed.

W. Muldoon: It is a dynamic plan that is fluid. Does the JNSC need anything from us?

Roman Motyka (JNSC): The completion of the Montana Creek Master Plan and assistance in grooming and trail maintenance.

A. Beebe-Giudice: How many youth program participants received financial aid?

Frankie Pillifant: In the last three years, we have moved to a pay-as-you-can format. The youth program does a lot of fundraising to help support everyone who wants to be included in joining the youth Nordic ski program.

VI. Unfinished Business –

A. Fish Creek Park Master Plan

M. Elfers: Last year Parks & Rec and Fish & Game was approached by Southeast Alaska Watershed Coalition (SAWC) to partner on a Fish Creek project.

Rob Cadmus (SAWC): Fish Creek has a considerable amount of recreational use in the area, but it has a failing dike and has been heavily modified over the years. We did a lot of outreach and engagement within the community through 2021. We developed three options that we put out to the community. We received a lot of passionate and sincere comments, that were all over the map. We came up with a drawing of the concept that is more of a hands-off approach. Leaving the northeast pond as it is with some recreational improvements. We would be doing some fish habitat enhancement in the dyke. Some slight changes to the dyke on the southwest pond.

M. Elfers: We had a lot of wonderful, passionate input, what is shown on this plan is a more deferred maintenance approach. Not a lot of new stuff or change just doing a little bit better as what's there now.

Rob Cadmus (SAWC): It's a natural environment that has been heavily modified and it will probably change over time. There's going to have to be a kind of management strategy recognizing that this place is not going to be static. The next steps are to finalize the master plan, design work & details and assist with gathering funding.

W. Muldoon: You guys nailed it with the robust public process and engagement, the

unified map data sets, it's great. Is there anything you feel you need from PRAC?

Rob Cadmus (SAWC): At the moment, my hope was to inform you of where we are at in the process. Once we finalize the master plan, what happens with it after that is up to the department.

E. Haynes: The thorough public engagement you did was impressive. Having a solid plan when going to funding agencies will definitely expedite the project in the future.

C. Mertl: The Northeast pond in both concepts showed improvements but your final plan has no improvements. What is the rationale for leaving it as is?

Rob Cadmus (SAWC): We went around a lot with this but currently, Fish & Game is currently doing some bat monitoring so we need to leave it be for now. Also, a lot of folks were against the proposal of removing the dike.

VII. Information Items –

A. 2019-2029 Parks & Rec Master Plan

M. Elfers: Gave a brief presentation on the Master Plan which can be found [here](#).

VIII. Committee, Liaison, and Board Member Reports

A. Chair Report— This is officially Mr. Duncan and E. Carrillo's last PRAC meeting. Thank you for your service on the board.

B. Liaison to the Assembly Report— COW set the priority projects list with Lemon Creek included. Talking about long-range plans for the Seawalk.

C. Liaison Reports—

Aquatics – W. Muldoon: Board passed the Aquatics budget; AGB reno on hold.

YAB – J. Anderson: None.

Eaglecrest – A. Beebe-Giudice: Pay increase for staff was passed by the board.

Jensen-Olson Arboretum— E. Carrillo: None

Lands, Economic Developing, Housing – C. Mertl: None.

Park Foundation— C. Mertl: Looking at beautifying stairs in downtown Juneau.

Treadwell Arena Board – K. Duncan: None

Trail Mix— E. Haynes: None

1% for Art— J. Anderson: None

Other Member Business –

G. Schaaf: Our PRAC retreat is planned for March 12 from 10am-2pm. More details to come.

Adjournment – 6:57 p.m. Having no other business before the board.

Respectfully submitted by Lauren Verrelli, Recreation & Public Services Manager 2/25/2022



AMALGA MEADOWS

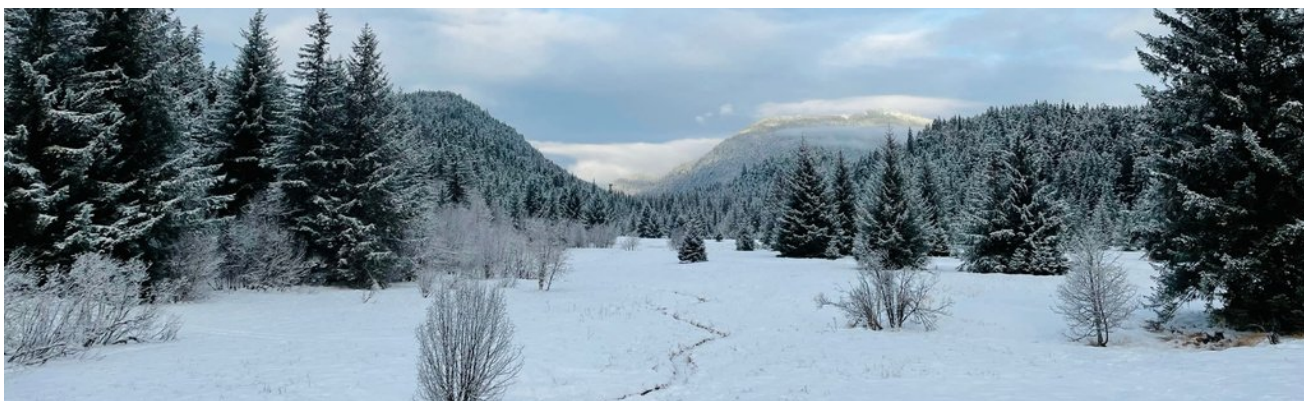
MASTER PLAN



AMALGA MEADOWS

MASTER PLAN

Purpose	2
Plan Background & Community Involvement	3
Assessment & Historic Uses	4
Circulation & Connections Plan	5
Impact Zone & Uses	6
Appendix A Park Use Guiding Principles	7
Appendix B Natural History of Amalga Meadows Guide	8



PURPOSE

The Amalga Meadows Master Plan, through community input and involvement, informs management intent of the park with specific areas highlighted for unique considerations. The public outreach process clearly indicated a desire for various zones of management where different uses may be allowed, while still aligning with the Parks and Recreation Master Plan designations for the area. As proposals are made in the future for new uses or services, they will be evaluated through this plan for compatibility. Specific improvements and new facilities are generally not indicated on the plan.

The Parks and Recreation Master Plan, 2019, identifies the park area as Conservation Area, defined as “A natural area with recognized environmental qualities of high value, set aside for the protection and management of the natural environment with recreation as a secondary objective.” However the plan designates the Eagle Valley Center within the park as a Developed Natural Area, defined as “A natural setting where evidence of people is obvious but blends in with the natural environment. Uses are primarily passive recreation activities, and areas for group use may be provided. Facilities are for the comfort and convenience of visitors. These areas are intended to serve the entire community.”





PLAN BACKGROUND & COMMUNITY INVOLVEMENT

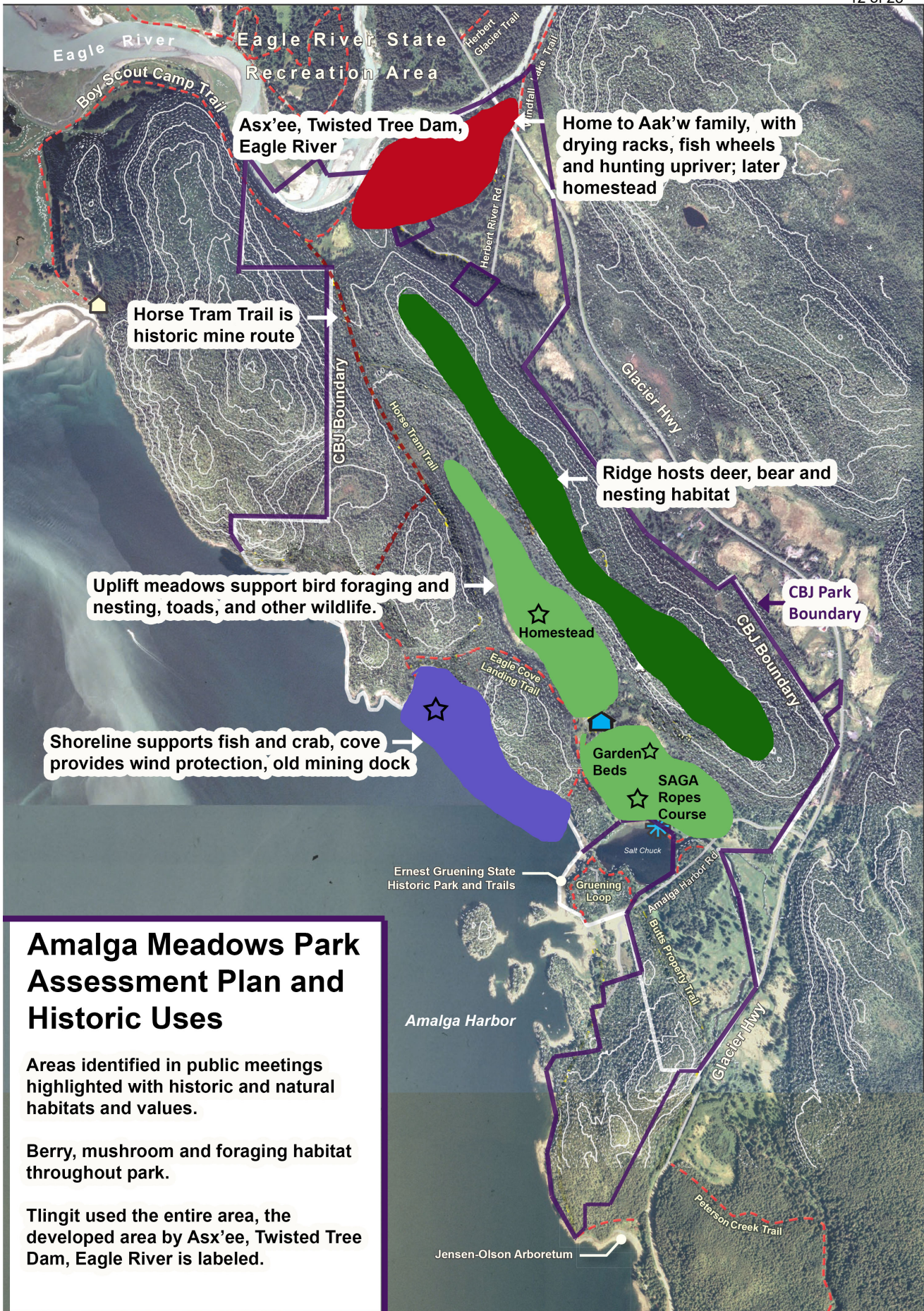
Community work began on this park in the early 2000's shortly after land in this area was transferred to the City and Borough of Juneau (CBJ). The Southeast Alaska Land Trust worked to create the "Juneau Green Zone, Breadline Bluff to Sawmill Creek" map. The mapping effort identified ownership of properties along the coast as a first step to plan for future use and protection of this area.

Following this mapping effort, a community process began to develop and an agreement was created between the City and Borough of Juneau Parks and Recreation Department and the State of Alaska Parks Division. Through public meetings and the work of a steering committee, a vision and management intent for the Amalga



Meadows Park and Eagle Beach areas were established and finalized in 2003. The management intent was to consider the area's "existing values, resources, and uses and its tremendous potential to meet public recreation and other interests. The area should offer a diversity of public use experiences and levels of development, from less to more intense." The vision for the area was to create a "premiere recreation, outdoor education and cultural/historic destination for Juneau residents, visitors and youth."

In 2016, a planning meeting was held with the neighborhood and stakeholders of the park to establish goals and a vision for recreational use of the area. In 2019, two community meetings were held to further develop this vision. This plan is informed by the community planning efforts over the last twenty years.

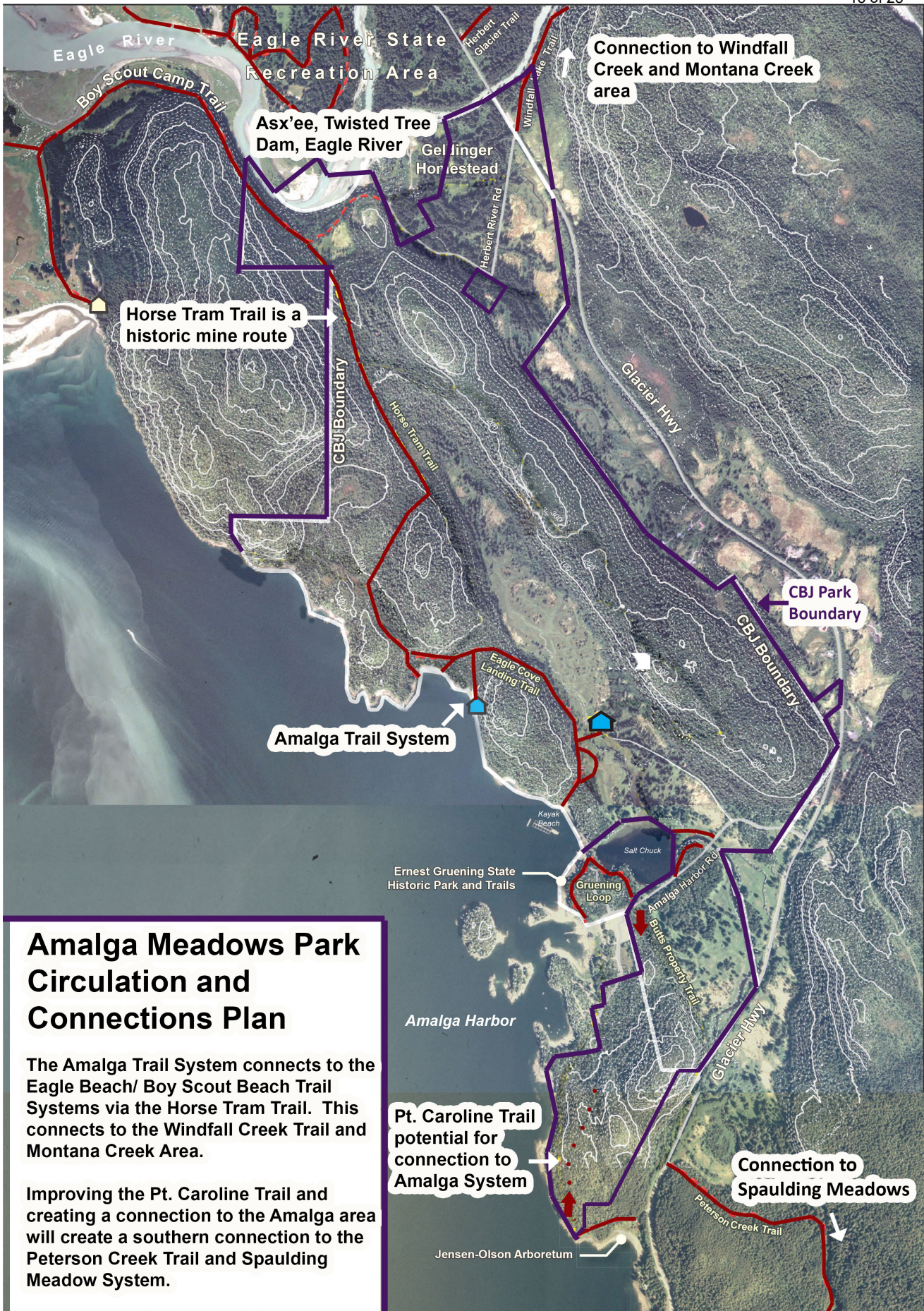


Amalga Meadows Park Assessment Plan and Historic Uses

Areas identified in public meetings highlighted with historic and natural habitats and values.

Berry, mushroom and foraging habitat throughout park.

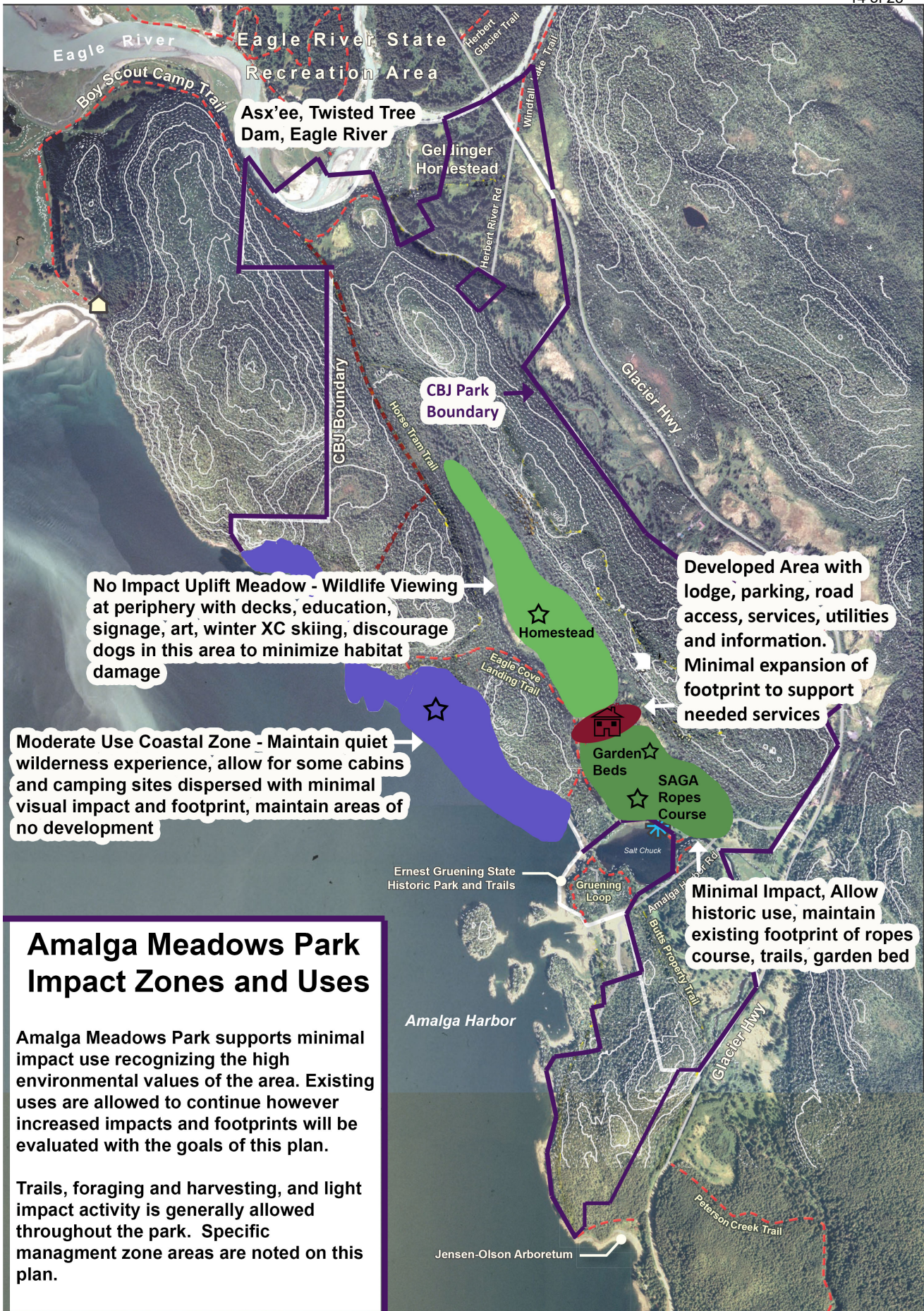
Tlingit used the entire area, the developed area by Asx'ee, Twisted Tree Dam, Eagle River is labeled.



Amalga Meadows Park Circulation and Connections Plan

The Amalga Trail System connects to the Eagle Beach/ Boy Scout Beach Trail Systems via the Horse Tram Trail. This connects to the Windfall Creek Trail and Montana Creek Area.

Improving the Pt. Caroline Trail and creating a connection to the Amalga area will create a southern connection to the Peterson Creek Trail and Spaulding Meadow System.



No Impact Uplift Meadow - Wildlife Viewing
 at periphery with decks, education, signage, art, winter XC skiing, discourage dogs in this area to minimize habitat damage

Moderate Use Coastal Zone - Maintain quiet wilderness experience, allow for some cabins and camping sites dispersed with minimal visual impact and footprint, maintain areas of no development

Developed Area with lodge, parking, road access, services, utilities and information.
 Minimal expansion of footprint to support needed services

Minimal Impact, Allow historic use, maintain existing footprint of ropes course, trails, garden bed

Amalga Meadows Park Impact Zones and Uses

Amalga Meadows Park supports minimal impact use recognizing the high environmental values of the area. Existing uses are allowed to continue however increased impacts and footprints will be evaluated with the goals of this plan.

Trails, foraging and harvesting, and light impact activity is generally allowed throughout the park. Specific management zone areas are noted on this plan.



Welcome



EAGLE VALLEY CENTER and AMALGA MEADOWS PARK

The CBJ Parks & Recreation Department invites you to discover the rich history and natural beauty of this special area. This 639-acre reserve is a jewel in Juneau's park system, offering accessible trails to two secluded beaches, a public use cabin, and connections to the Boy Scout Beach Trail. The Eagle Valley Center is a former homestead that provides a unique venue for weddings, retreats, and reunions with overnight accommodations for up to 14 guests.

TO KEEP HARMONY IN THIS NATURAL ENVIRONMENT, VISITORS AND GUESTS SHOULD FOLLOW THE PARK'S GUIDING PRINCIPLES.

Guiding Principles

LEAVE NO TRACE

Pack out what you pack in, including toilet paper.

Tread lightly!

Do not feed the wildlife!

PETS ARE WELCOME

Please keep pets on a leash or under expert voice command and clean up after them by hauling out solid waste.

RESPECT THE VEGETATION

Harvest resources sustainably and respect animal habitats.

FIRES

Fires allowed within designated fire rings only.

Do not cut live trees for firewood.



No firearms or fireworks on park land



No motorized vehicles on trails



No glass containers

RESPECT THE WILDLIFE

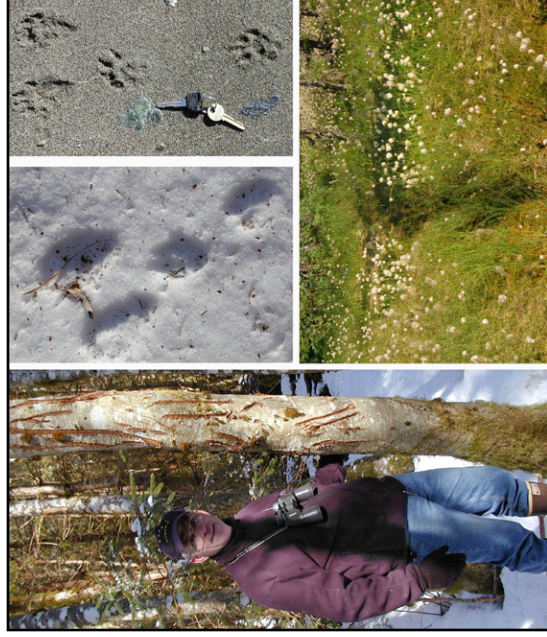
Observe wild animals only at a distance and without crowding other observers.

Take only memories and leave only footprints



Natural History of Amalga Meadows

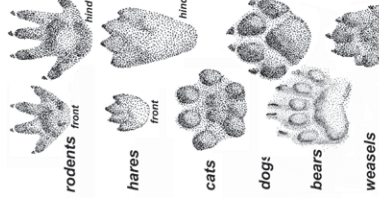
Guide to beach access trails from Amalga Lodge



Amalga animal sign

Clockwise from left:

- Ed Mills with red alder scratch tree. Bears mark trees in areas of intense social interaction, such as prime fishing holes, or where 2 trails come together.
- Snowshoe hare tracks can be found at Amalga Meadows but are more common on Herbert and Eagle Rivers where willow is abundant.
- Tracks of hoary marmot in sand at Eagle River Landing. Most marmots live in subalpine meadows, but some have recently colonized beaches.
- "Hotfoot" trail in cottonsedge meadow, created by bears repeatedly stepping in the same footprints.



Tracks of mammal families

This trail guide is part of a series of interpretive products created in 2010 for trails on CBJ lands by Discovery Southeast. Other creations include natural history signs, a summary guide to CBJ trails and free web products.

Discovery Southeast

Founded in 1989, DSE is a nonprofit organization promoting direct, hands-on learning from nature through natural science and outdoor education for youth, adults, and teachers. Discovery naturalists deepen the bonds between people & nature.
www.discoverysoutheast.org • 463-1500

CBJ Parks & Recreation

The City and Borough of Juneau/Parks & Recreation welcomes you. Parks & Recreation manages 50 miles of trails and fosters innovative stewardship of its diverse resources. Collectively, along with our partners Alaska State Parks, the U.S. Forest Service, Trail Mix and SAGA, 135 miles of trails are managed--connecting our community with Juneau's magnificent landscape.

We hope you have a great experience on your trails. Take only memories, leave only footprints. Call Parks & Recreation at 586-5226. • www.juneau.org/parksrec



To Eagle River Landing

Distance: 0.5 miles
Elevation gain: 50 feet
Difficulty: easy
Ownership: CBJ Natural Area

To Kayak Beach

Distance: 0.27 miles
Elevation gain: 40 feet
Difficulty: easy
Ownership: CBJ Natural Area

Other nearby points of interest:

The Salt Chuck, to the south, has a reversing tidal gut that floods with saltwater on very high tides. This is a favorite fishing and bird-watching destination. Upstream it connects with the rich Peterson Creek meadow-parkland complex.

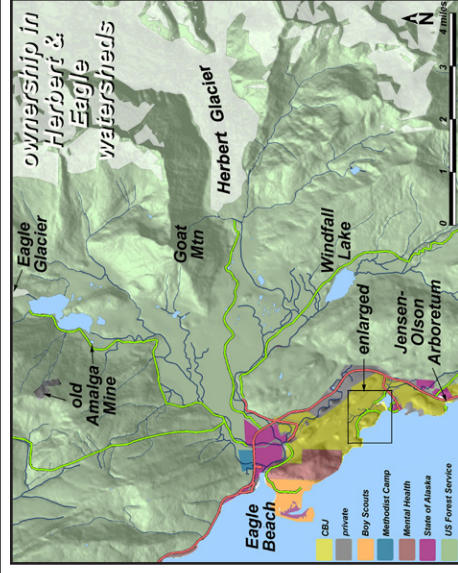
Ask more questions!

Good naturalists constantly ask questions: What makes this soil so wet? How fast are these alders growing? Can fish winter in this creek? Is this excellent or mediocre wildlife habitat?

Here are some "starter" questions to ask yourself each time you enter a new forest type at Amalga Meadows: Is this a young or an old forest? How do you know? If it's *not* a really old forest, why is it young? What disturbance eliminated the previous forest?

Or *was there* a previous forest? What clues does the topography offer you? What geological forces create flat landscapes? How did the history of grazing influence the vegetation of Amalga Meadows?

For more examples of productive sleuthing questions, download *Priming the pump. Socratic method in the field and in print*, in the Fall 2006 Discoveries newsletter. It's on the publications page of our website: www.discoverysoutheast.org



Inland extension of Risen Valleys, near 25-mile Glacier Highway

Please respect the SAGA facilities by staying off the challenge course.

to trailhead parking

to boat launch

1000 feet

The NW coastline of this scene has been approximated from earlier B&W aerials

Amalga Meadows

SAGA Lodge

Kayak Beach Trail

Kayak Beach
net pens

reversing tidal gut

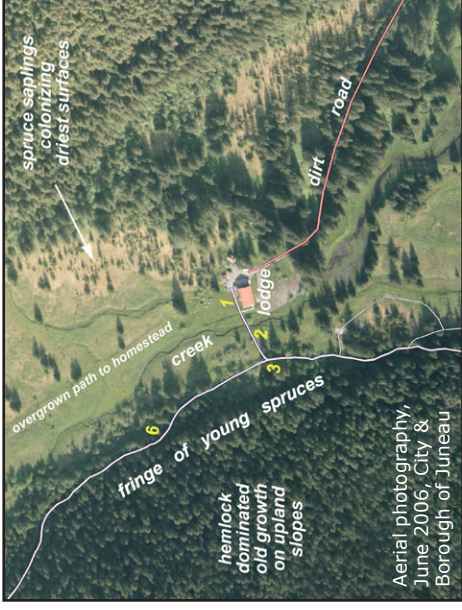
1000 feet

Aerial photography, June 2006, City and Borough of Juneau



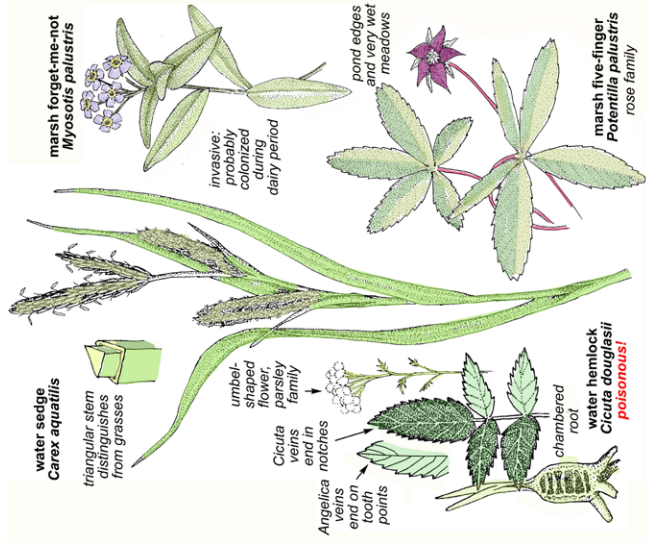
Numbered stations

Interpretive stations are marked by numbered posts along trails to Eagle River Landing and Kayak Beach, and are shown in yellow on both aerial photos in this brochure.



1 Trailhead sign. Good place to get oriented to local geology, natural communities, wildlife, and the importance of glacial rebound. Land here is rising at about 0.8 inches/year.

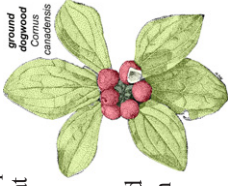
2 Stream. This small creek is a former tidal slough. The broad swale it now occupies has grasses (round stems), sedges (triangular stems), and small herbs adapted to damp environments. Fine marine silt may keep much of Amalga Meadows in wetland habitats indefinitely, even as land rises.



3 Intersection. Turn left (south) here to Kayak Beach, to visit stations 4 and 5.



4 Old growth. It only takes a short walk up the trail south of the Challenge Course to leave behind the surfaces exposed to tides during the Little Ice Age. Soon, you're in an all-aged forest with hemlocks many centuries old. The complex canopy intercepts snow, but is gappy enough to admit light to understory plants like ground dogwood that feed deer in winter. Snags and fallen logs provide micro-habitat for wrens and red-backed voles. Diverse fungi both attack and nourish forest trees.



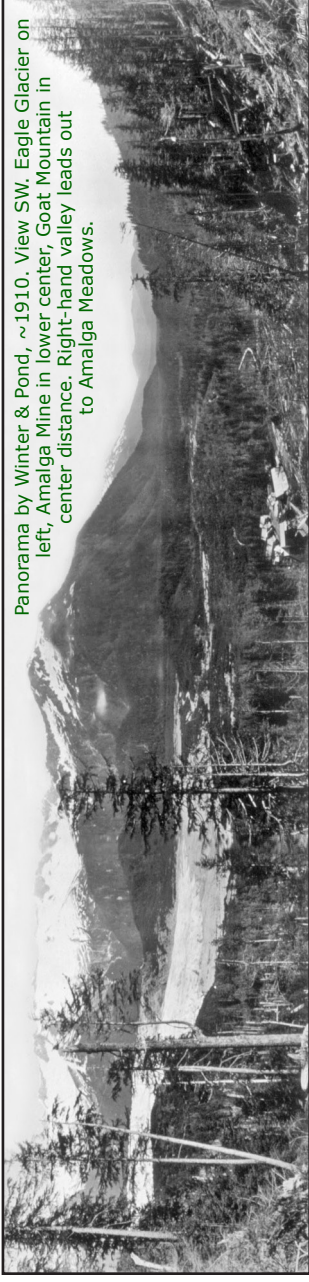
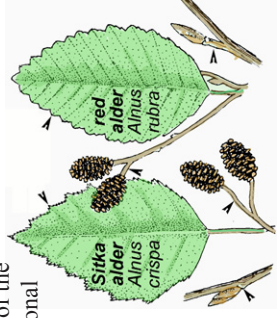
5 Kayak Beach. Most of the beaches north of Amalga Harbor are steep bedrock outcroppings of metamorphosed volcanic greenstone. Good picnic beaches and kayak-launching places are scarce. Exceptions like this little cove are also good places to look for tracks in sand. DIPAC chum salmon often wash up here, attracting black bear, river otter, mink, raven and gulls.



View south along the launch-path at Kayak Beach where SAGA moved boulders for easier access. Salt Chuck tidal gut in center distance.

To complete the tour, return to station 3 and follow the trail north to Eagle River Landing

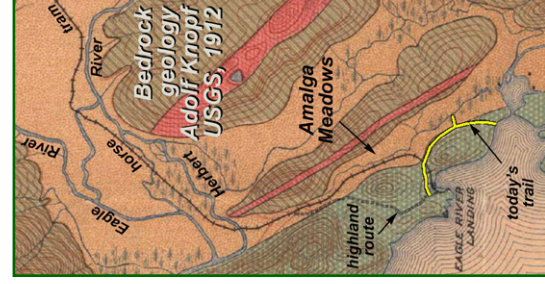
6 Alders on forest edge. Our trail leaves the raised tidal surface and climbs onto upland slopes. Look for black bear claw marks in mature red alders at the edge of the forest. Alders are early successional trees, not found in old growth. Bear trails just inside the forest envelope Amalga Meadows, giving quick access to one of Juneau's richest foraging sites for herbivores. This new beach access trail follows the old game routes.



7 Forested wetland. As the trail turns westward into the saddle, it enters scrubby old growth with widely spaced, sparse-crowned trees and many snags. Skunk cabbage indicates poor drainage. This type of forest is common on the ridge separating Amalga Meadows from the ocean. In fact, the largest trees on the trail are not old growth, but younger "uplift spruces" at station 10.

8 Amalga Mine horse tram.

Notice how small the trees are here. At this point, starting down from the saddle, the new beach access trail runs exactly along the old horse tram route between Eagle River Landing and the Miming town of Amalga, 6 miles up-valley. Original old growth was felled along the tram route; the second growth is now a century old. Few stumps from the logging remain. Most rotted long ago.



9 Eagle River Landing. Near the point enclosing the western end of this cove, a deepwater wharf accommodated Juneau-Skagway steamships stopping at the tram terminus.



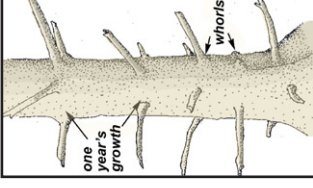
This is one of the finest south-facing beaches on Juneau's coastline. Otters and even hoary marmots romp here. Note the composition of the beach gravel before moving on to station 10.



Winter hikers can find even more tracks on snow.

10 Uplift spruces.

If you were to dig where these big, limby spruces are rooted you'd find the same well-drained gravel composing the beach downslope. Glacial rebound—see Amalga Meadows trailhead sign—has raised this beach about 8 feet since the peak of the Little Ice Age, about 250 years ago.



Young spruces growing in open, sunny locations put out thick branches right at ground level. A century later, after shade from the upper-crown canopy has caused these branches to die and fall, you can still tell the trees were open-grown by the whorls of branch stubs. Knowing that the inter-whorl distance represents one year's growth, step back until you can see almost to the tree top. Holding your fingers about 10 whorls apart, "step up" the tree and estimate its age. Then, estimate how far above extreme high water they are growing. From these observations, you can make your own rough calculation of the local rate of glacial rebound.

11 Highland route. The 1912 USGS bedrock geology map shows alternate routes to Amalga Mine. A narrow-gauge horse tram ran up the meadow, while a more meandering trail followed the coastal ridge. This was probably for hikers only, as horses would have bogged down in the soft peat.



From: [Chuck Smythe](#)
To: [Michele Elfers](#)
Subject: RE: Amalga Meadows Park Master Plan
Date: Monday, November 8, 2021 3:56:08 PM
Attachments: [image001.png](#)
[image004.gif](#)
[image005.gif](#)
[image006.gif](#)
[image007.gif](#)
[image008.png](#)
[image009.jpg](#)

EXTERNAL E-MAIL: BE CAUTIOUS WHEN OPENING FILES OR FOLLOWING LINKS

Hi Michele,

Good to get something like this in here. Suggested caption: Home to a large Áak'w family with many fish drying racks, fish wheels and hunting upriver; later a homestead.

It was an important place for the Áak'w. Is there a way to get the Tlingit name in for Eagle River --- Asx'ée ("Twisted Tree Dam")?

Thanks.

Chuck

Chuck Smythe, Ph.D. | Senior Ethnologist



105 S. Seward St. Suite 201 | Juneau, AK 99801
direct 907-586-9282 | **main** 907-463-4844 | **fax** 907-586-9293

www.sealaskaheritage.org

Stay connected: [Join our eNews Network](#)



From: Michele Elfers <Michele.Elfers@juneau.org>
Sent: Thursday, November 4, 2021 8:08 AM
To: Chuck Smythe <Chuck.Smythe@sealaska.com>
Subject: FW: Amalga Meadows Park Master Plan

EXTERNAL EMAIL: Please use caution and only open attachments from a trusted source.

Hi Chuck,

We had your email wrong on the first send out, so here it is with corrected email. I am hoping you can check on how I portrayed the Tlingit use of the area and let me know if there is a better way to

say it. See the maps and legends.

Thanks,
Michele

From: Michele Elfers

Sent: Thursday, November 4, 2021 7:55 AM

To: Michele Elfers <Michele.Elfers@juneau.org>; Kristi West <Kristi.West@juneau.org>

Subject: Amalga Meadows Park Master Plan

Dear Eagle Valley Center and Amalga Meadows Park Enthusiasts,

Please find attached to this email the Amalga Meadows Park Master Plan that was drafted with your input and comments from the community and stakeholder meetings in 2019. Please look this plan over and give feedback to Michele at Michele.Elfers@juneau.org and Kristi at Kristi.West@juneau.org. We will be taking feedback until November 24, 2021.

Thank you for your help and support in providing Juneau's community members and visitors guidance in enjoying the many benefits of this treasured park; while protecting the natural beauty of its existence into perpetuity.

Kristi and Michele

Kristi West (she/her)

Eagle Valley Center Coordinator
(907)321-3737

From: [Kaye Sullivan](#)
To: [Michele Elfers](#)
Cc: [Rob Murphy](#); [George Schaaf](#)
Subject: Re: Amalga Meadows Park Master Plan
Date: Wednesday, November 24, 2021 11:14:10 AM
Attachments: [image001.png](#)
[image002.jpg](#)

EXTERNAL E-MAIL: BE CAUTIOUS WHEN OPENING FILES OR FOLLOWING LINKS

Thank you for the opportunity to comment. We assume this plan is still in draft form.

Circulation and Connections Plan

The potential connection from the Pt Caroline Trail to Amalga, as shown, crosses private property. Showing the trail on a public Master Plan is extremely problematic. It invites the public on to our private property without our permission. This was not part of the planning or community meetings. Furthermore, this was never discussed with the property owners. To put it out in a public plan after assuring the neighborhood P&R would be transparent feels disingenuous. The potential trail must be removed from private property with an acknowledgment that it was an error on P&R part.

Impact Zones and Uses

Moderate Use Coastal Zone states that it will allow for some cabin/camping sites. Signage leading to the current cabin discourages public use of the trail and beach at the cabin site. The beaches in this area are used extensively, and putting another cabin on the beach limits use to just a few rather than the general public. Also at the community meeting the discussion was about potential cabins/yurts near the lodge. We do not recall discussion of more cabins on the beaches and do not support this.

No Impact Uplift Meadow: We have traditionally used this area for skijoring with our dogs. We haven't found dogs to be a problem in this area, and do not support the dog free designation.

Thanks again for listening to the neighborhood's concerns.

Rob Murphy and Kaye Sullivan

From: [Rick Driscoll](#)
To: [Michele Elfers](#)
Subject: Re: Amalga Meadows Park Master Plan
Date: Wednesday, November 17, 2021 7:43:50 PM
Attachments: [image001.png](#)
[image002.jpg](#)

EXTERNAL E-MAIL: BE CAUTIOUS WHEN OPENING FILES OR FOLLOWING LINKS

Hi Michele,

Thanks for the continued efforts to keep the Amalga Community abreast and involved in the planning process. I have just three comments on this updated Master Plan:

- I've been a resident of the Amalga community since 2005. I've attended every meeting related to the Master Plan process since. At no point in the planning process was the concept of building a trail from the arboretum to the Amalga area ever mentioned in any detail. It's never been a topic of discussion. At some points it was added to various maps, and also removed, but when confronted about its placement, the city as always downplayed as not something the city was really interested in and not something thing the neighborhood should worry about or take seriously. I find it disingenuous that in the latest reincarnation of this Master Plan it's figured prominently. I don't support building a trail that goes through our backyards, our access road system, or anywhere in the vicinity of our community. Alternatively, there is an old road above/off the highway that leads north from the arboretum to Peterson Creek that could easily be converted to trail, and the Peterson Creek meadowed area between the two Peterson Creek bridges is a beautiful alternative to place a trail to connect to the Amalga Meadows Park.
- I don't support a dog-free area of the park. In the winter the meadow is an all-time favorite place to xc ski with dogs.
- It's not entirely clear from the Plan what the city's intent is regarding additional development of cabins and camping in the area. However, the new Amalga Cabin has certainly been a popular rental and brought considerably more daily traffic to the area. There are already primitive camping spots on the beach north of the cabin. From my perspective, the shoreline area is already maxed out, and its current state allows for an adequate mix of camping alternatives. Another developed cabin in that area would be over kill. Alternatively, has the city ever thought of building a footbridge over Eagle River to connect the Horse tram trail/Boy Scout Beach trail to the Eagle Beach State Park Cabins? That would be a great hike and adequate distance for folks wanting to cabin camp through the area.

Thanks again for seeking our input.

From: [Lynn Schooler gmail](#)
To: [Michele Elfers](#); [Kristi West](#)
Subject: Re: Amalga Meadows Park Master Plan/COMMENTS/SCHOOLER
Date: Monday, November 15, 2021 12:24:39 PM

EXTERNAL E-MAIL: BE CAUTIOUS WHEN OPENING FILES OR FOLLOWING LINKS

Dear Kristi and Michele

Herein please find my comments and suggestions on the Amalga Meadows Master Plan.

I am a 21 year resident of Amalga Harbor and have perhaps walked, hiked, fished, picked, harvested, and explored the Peterson Creek Watershed, which includes the Amalga Meadows, as much as anyone alive today. I also had the gift of a long term friendship with Ed Huizer, who was active in the area since Territory Days, and learned a lot of the area's history from him, and had the benefit of his observations on how the area has changed since the 1950s.

In general, I support the concept of the Amalga Meadows Master plan and find that for the most part, the plan as it stands is a good balance of many uses, with only a few small items and one very large issue that I feel could be addressed differently.

My greatest concern is the Pt. Caroline trail and its connection to the EVC as it is laid out on page 4. As mapped, that connection would run proximate to and through a developed neighborhood. It is hard for me to imagine that the average Juneau trail user would find that enjoyable. And I am absolutely certain that I and my neighbors do not want a steady stream of people and unfamiliar dogs transiting our neighborhood. Most of us chose long ago to live out the road, at the far end of a private road, beyond the reach of most public services, for the privacy it offered. The Pt. Caroline connection as offered would impact our privacy severely.

Further, over the years, I have learned that there is far more wildlife usage of the 'transition zone' between the smaller uplift meadow our private road traverses and the forest edge along the base of the ridge than one would expect. Bear, deer, coyotes, mink, otters, marten, and on a few very rare occasions, a wolf, travel along the edge there or just inside the tree line with surprising frequency. (The same can be said of the Amalga Meadows proper around the EVC and upstream of the Peterson Creek bridge on Amalga Harbor Road. The forested edge of the system of meadows all the way from the Jensen Arboretum to Eagle Beach State Park is 'where the action is.' A popular trail would have an unavoidable negative effect on that.

I strongly suggest the Pt. Caroline connection be re-imagined with the same considerations as the improved Tram Trail connection between EVC and the Scout Camp Trail, and likewise be routed higher up on the ridge between the arboretum and Amalga Harbor, to avoid the important wildlife use areas and critical meadows as much as possible. Currently the unimproved trail runs from Pt. Caroline north about 400 yards to the cliffs above the bight south of Huffman Harbor, the cove on the south side of Amalga Harbor that is the site of ten private homes and cabins. From there the existing 'trail' breaks into several game trails and/or fades out. As drawn, the plan has the trail going down into the Huffman/Amalga neighborhood. A preferable route for a developed trail would instead be to switchback up the ridge away from the coast before it reaches the bight, about 200-300 yards north of Pt.

Caroline, and traverse the ridge toward the old Butts property before turning back toward Amalga Harbor Road through the lower arm of forest, and avoid all of the meadows entirely (just as the tram trail development avoided the Amalga Meadows.)

The open meadows along Peterson Creek above the bridge are particularly important in spring to ground nesting birds like the Wilson's snipe, and the free-roaming dogs that will inevitably come with more public use will create a threat to those nests, regardless of any designation as a 'dog free zone' or otherwise. It only takes one or two out of control dogs to wreak havoc, just as a single uncontrolled dog wiped out the entire Arctic Tern nesting colony at the Mendenhall Glacier a few springs ago. The only way to avoid that is a trail that runs entirely in the forest and well away from the meadow/forest transition zone.

Thank you for incorporating my input into the Master Meadow plan.

Regards,
Lynn Schooler

On Nov 4, 2021, at 5:54 AM, Michele Elfers <Michele.Elfers@juneau.org> wrote:

Dear Eagle Valley Center and Amalga Meadows Park Enthusiasts,

Please find attached to this email the Amalga Meadows Park Master Plan that was drafted with your input and comments from the community and stakeholder meetings in 2019. Please look this plan over and give feedback to Michele at Michele.Elfers@juneau.org and Kristi at Kristi.West@juneau.org. We will be taking feedback until November 24, 2021.

Thank you for your help and support in providing Juneau's community members and visitors guidance in enjoying the many benefits of this treasured park; while protecting the natural beauty of its existence into perpetuity.

Kristi and Michele

Kristi West (she/her)
Eagle Valley Center Coordinator
(907)321-3737

<image001.png>

Michele Elfers
Deputy Director
Parks & Recreation
Ph: 364-2390

<image002.jpg>