



City and Borough of Juneau
 City & Borough Manager's Office
 155 South Seward Street
 Juneau, Alaska 99801
 Telephone: 586-5240 | Facsimile: 586-5385

DATE: January 10, 2022
 TO: CBJ Assembly
 FROM: Robert Barr, Incident Commander
 RE: **Situational Update –Level 3 Modified High**

Overall Community Risk	Disease Situation	Hospital Capacity	Public Health Capacity	The Complete CBJ COVID-19 Dashboard can be found here or by going to Juneau.org/ COVID-19
Level 3 - Modified High	The community case load remains high and, recently, has been stable. The Delta variant is present and community spread is occurring. Vaccine is available.	Local hospital case loads are stable, staffing is constrained due to staff isolation/quarantine. Staffing levels remain additionally dependent on a state contract. Medevac capacity is starting to become constrained.	Contact tracing is significantly constrained due to the quantity of cases. Approximately half of recent case activity is secondary in nature.	

Situation Assessment:

The 14 and 7 day case rates are at the very high alert level. The Omicron variant appears to be the dominant strain, although lab confirmation is pending. The community is urged to take advantage of vaccination, masking, and testing - the three most effective tools we have at combating the pandemic. Masking is required when indoors in public places. Social distancing remains recommended to mitigate disease spread and allow for effective contact tracing. Individuals should test immediately if they have even mild symptoms. **The single most effective strategy to mitigate COVID is to get vaccinated.**

Issues of Note:

Please note this is the last EOC report where we will report the test positivity metric and graph (detail below). This metric will also be removed from our dashboard.

Case activity continues to trend upwards and we continue our local trend of low hospitalizations – BRH has 1 patient in hospital for COVID-19 at the moment. While hospitalizations have trended lower with omicron throughout the world, very few locations are seeing as few hospitalizations as we are, proportionate to our case rate. This is likely due to our high vaccination rate.

Our main area of concern continue to be limitations related to staffing when staff are out ill both inside and outside of the medical sector. BRH continues to have record numbers of employees out with COVID-19.

Medevac availability has been sporadic over the past week as other hospitals that we rely on are also struggling with staffing challenges.

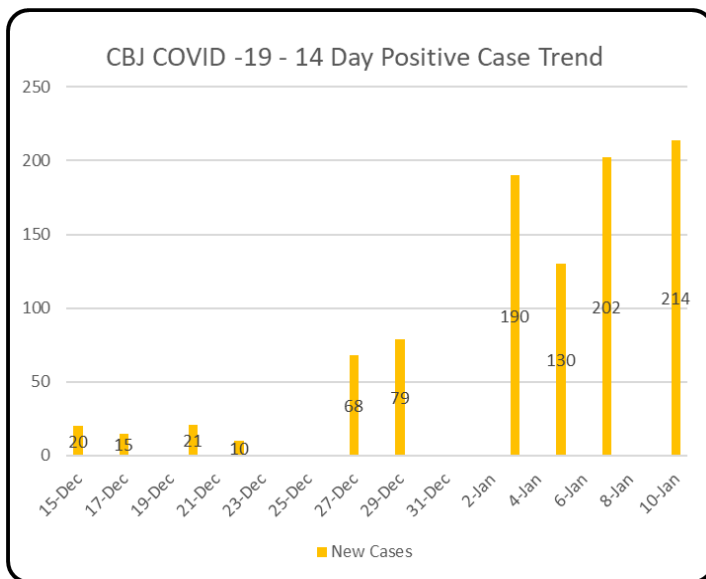
We continue to watch case activity elsewhere in the country and world for cues as to when we might expect to see a local plateau and eventual decline. Case activity in parts of Europe appears as if it may be starting to plateau while most parts of the U.S. with reliable testing availability and reporting continue to increase.

General Case Trends:

Juneau Public Health was not able to report generalized case trends today due to staffing limitations.

Daily Numbers update: We are reporting 214 new cases since the last EOC report on January 7th (F-M).

Statewide, the Alaska Department of Health and Social Services reports 3,284 new people identified with COVID-19 for data reported 1/7-1/9. The state reports no new deaths. The total number of resident deaths is 948. Alaska has had 162,626 cumulative resident cases of COVID-19 and a total of 5,992 nonresidents.



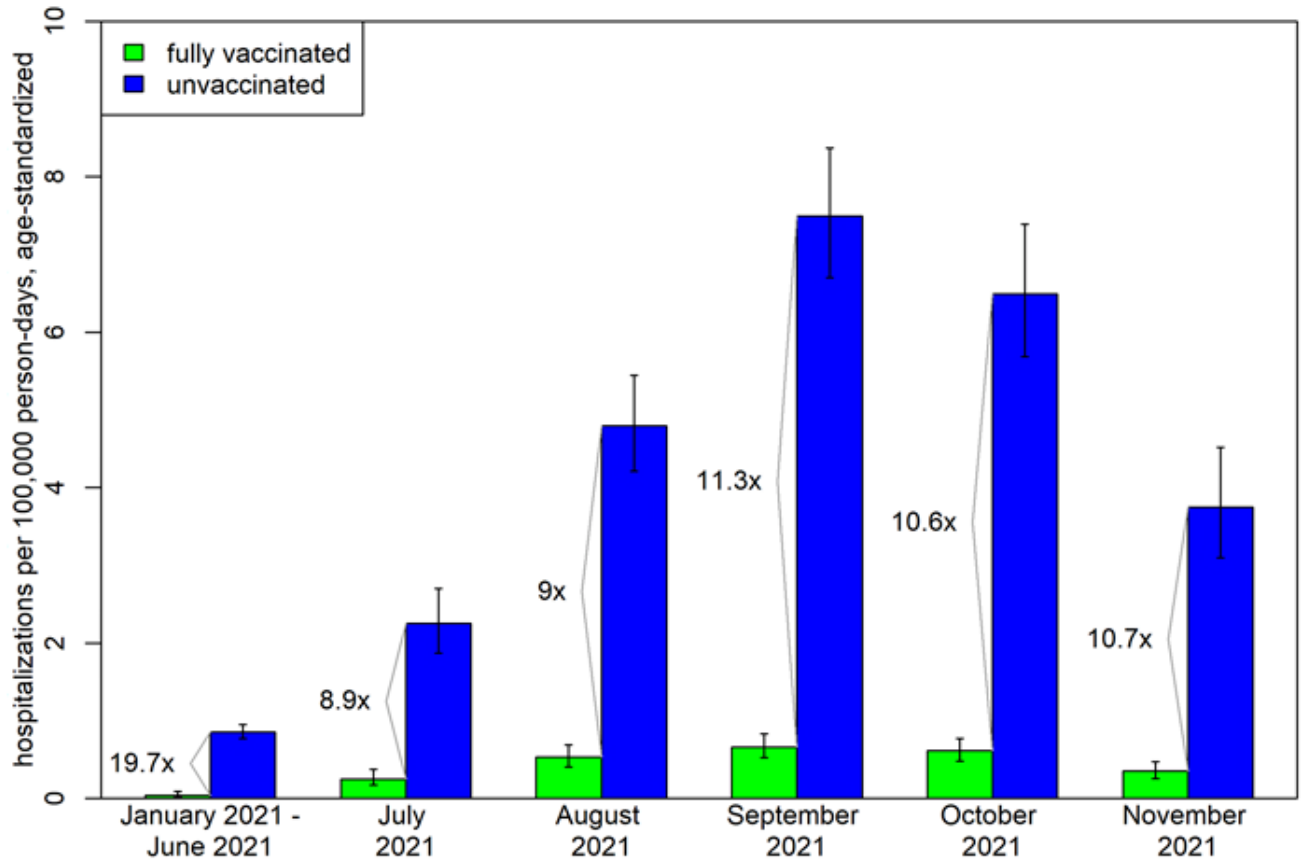
Breakthrough Cases: Vaccine breakthrough (VB) infections of COVID are those detected in a person who is at least 2 weeks beyond their second dose of a 2-dose series or the only dose of a 1-dose series.

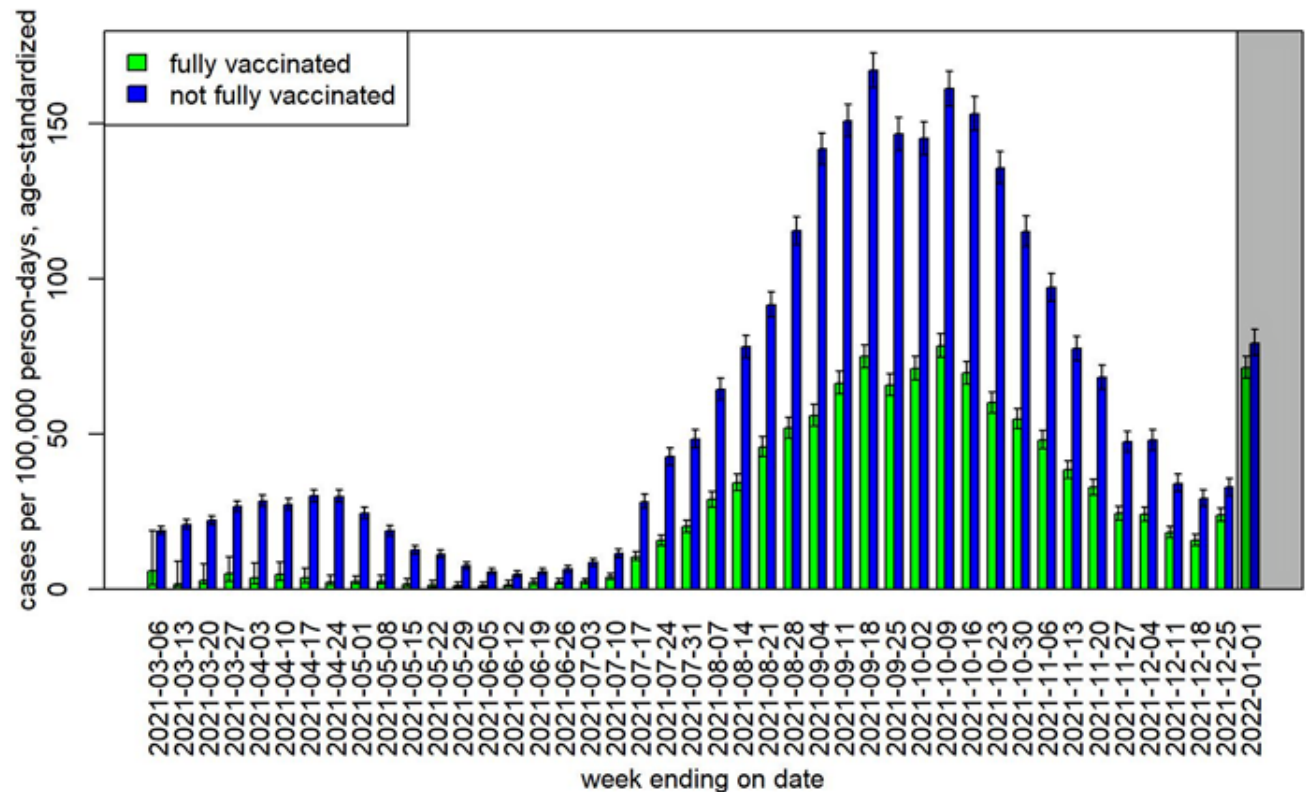
From January 16, 2021–January 1, 2022, 112 deaths, 349 hospitalizations, and 27,832 cases with a VB infection were reported among Alaska residents aged ≥5 years. These counts are provisional and subject to change as data are compiled and reviewed. In that same time frame, a total of 98,217 cases, 2,061 hospitalizations, and 634 deaths were reported.

73% of all cases, 83% of all hospitalizations, and 82% of deaths among Alaska residents aged ≥5 years from January 16, 2021 – January 1, 2022 were in people who were not fully vaccinated.

Between December 26 and January 1, Juneau had a vaccine breakthrough rate of 61.7% (up from 42.5% in the prior week).

More detailed information about hospitalizations, deaths, repeat and vaccine breakthrough infections among Alaska residents can also be found in the DHSS [monthly report](#), which includes data through November.





Variants of Concern:

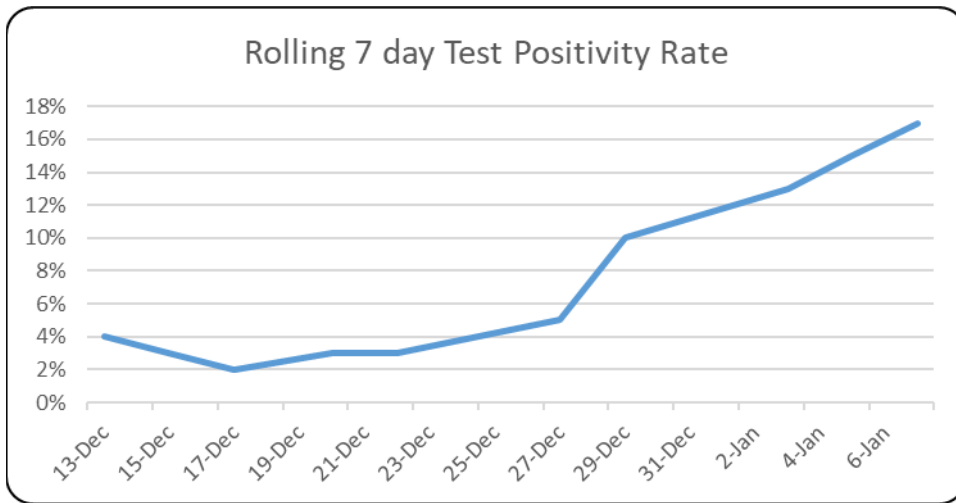
Like Southeast, Fairbanks has been struggling with challenging weather which has impacted the State public health lab that processes variant sequencing. Based on recent case activity trends, Omicron is spreading throughout the state and is likely the dominant variant of concern. The State of Alaska variants dashboard is available online: <https://akvariants.github.io/>

Testing Summary:

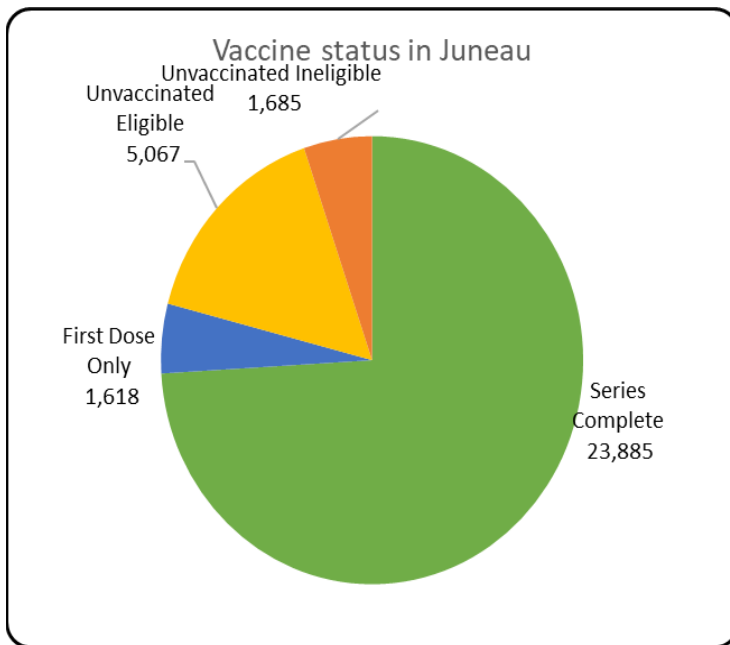
PCR testing at BRH continues to return results in under 24 hours, with very few exceptions.

Testing demand has outstripped supply over the weekend and availability at the fire training center will continue to be constrained as we catch-up throughout the week. This is due mainly to increased demand and partly to some reduced hours of operation due to the weather.

Going forward, borough-wide test positivity data will no longer be reported as it will no longer be available. The State of Alaska has removed the laboratory reporting requirement that mandated labs report negative test results to the State. We will still have insight into the test positivity rate for tests processed at Bartlett; however, these only represent approximately 1/3 to 1/2 of the PCR tests processed in the borough and do not account for rapid antigen self-tests.



Vaccination Updates:



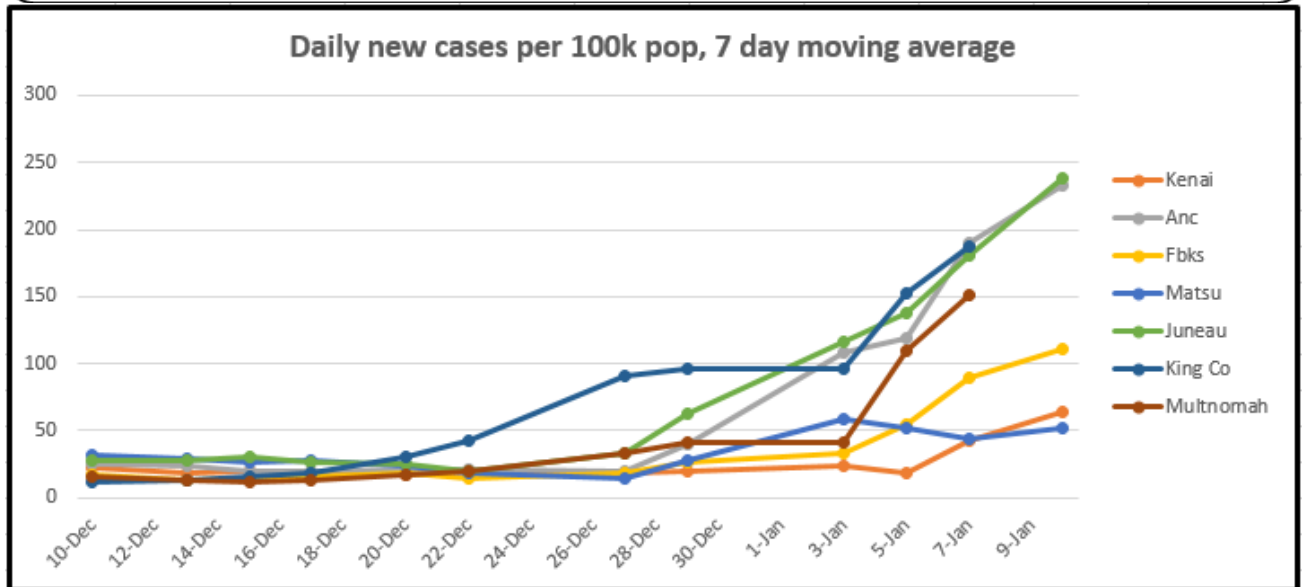
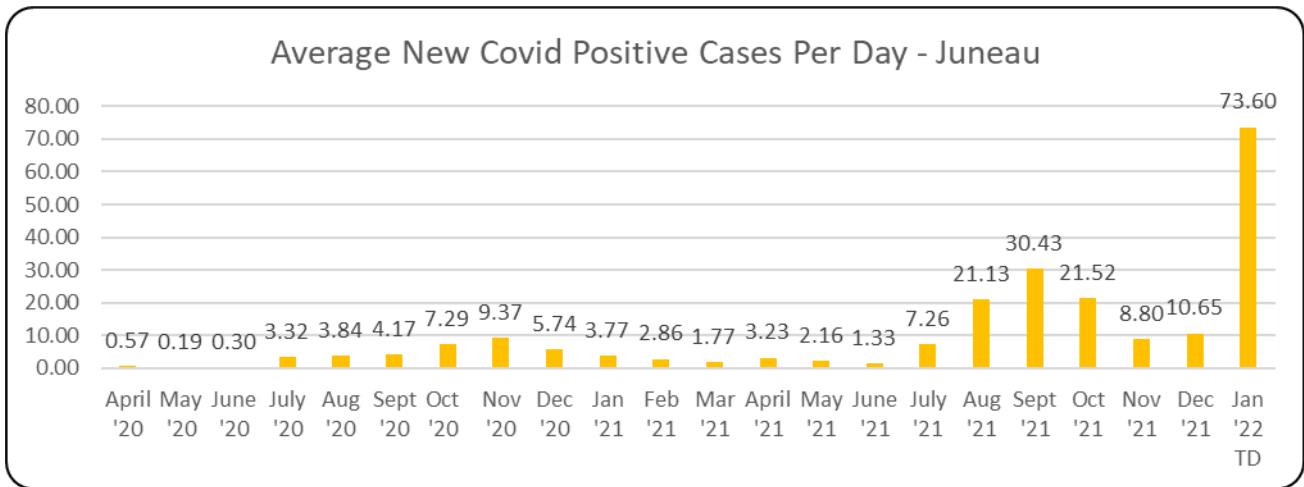
Total: **79.1%** of the total population of Juneau has received at least 1 dose of vaccine and **74.1%** have completed their vaccine series.

5+: **83.4%** of the age eligible Juneau population has received at least 1 dose of vaccine. **78.1%** have completed their vaccine series.

37.4% of those 5+ have received a booster dose.

65+: **96%** of this age group has at least one dose of vaccine. **92%** have completed the vaccine series.

71.4% of those 65+ have received a booster dose.



This chart tracks the number of new cases in the past 7 days, controlled for population. King County (Seattle) and Multnomah County (Portland) are included for context and due to travel frequency. The source data for Alaska is from the SOA dashboard. Out of state data is from the Harvard Global Health Institute (<https://globalepidemics.org/key-metrics-for-covid-suppression/>) and generally lags a day behind most of our other reporting. Policy recommendations at varying levels (<1, <10, <25, 25+) can be found on their website