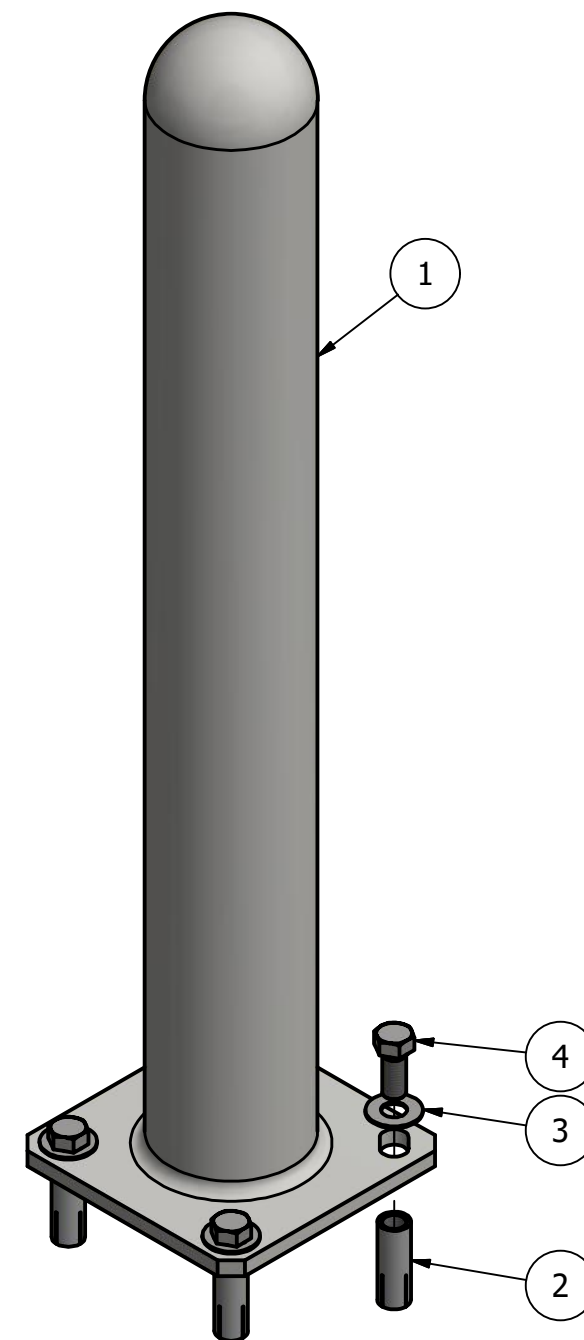
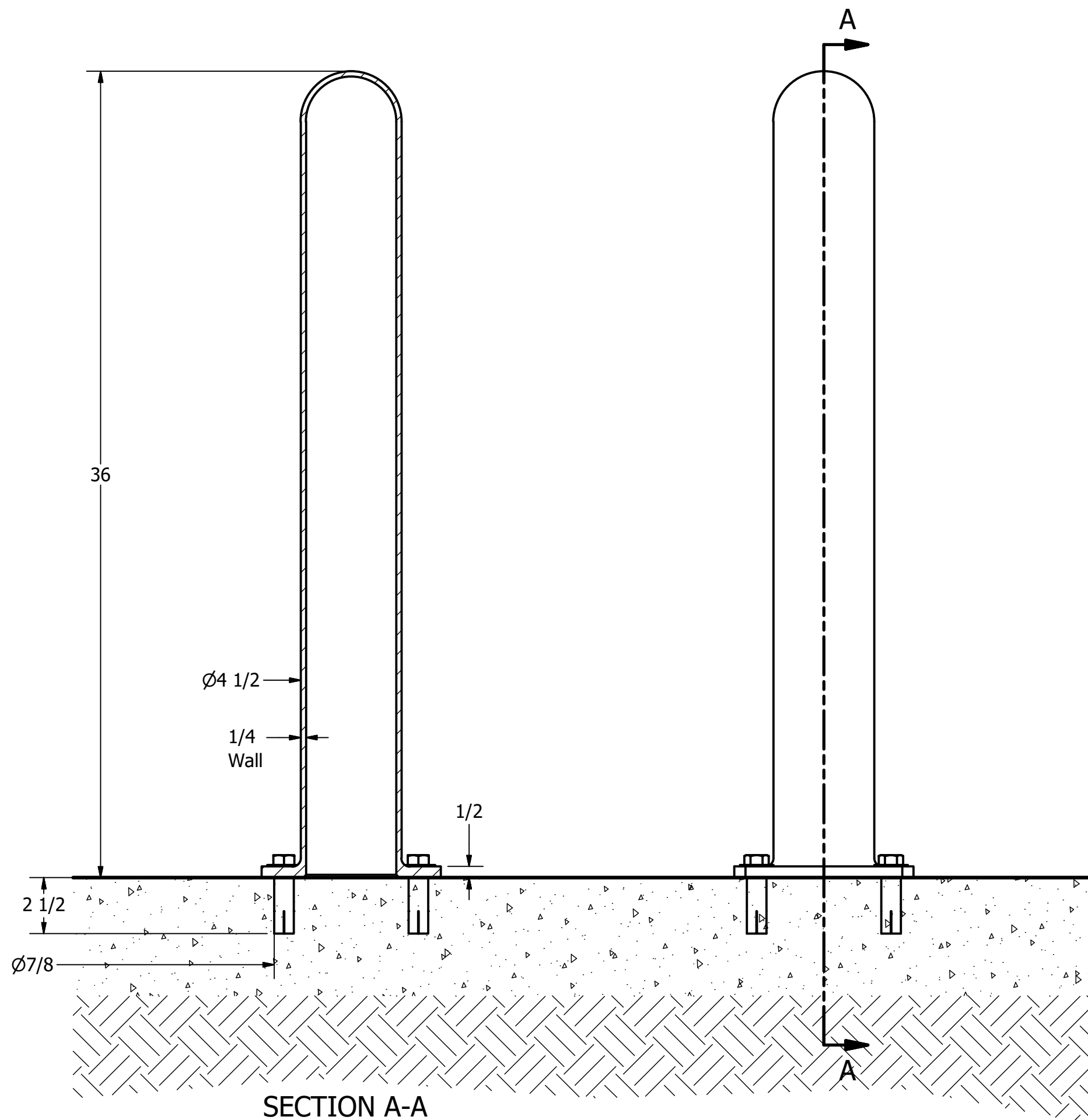
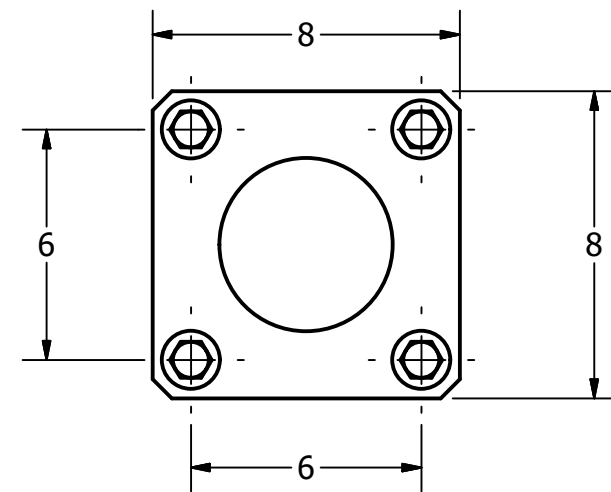


Bollard R-7236



- Tools needed:
- 1) Measuring tape
 - 2) 15/16" wrench
 - 3) Hammer drill
 - 4) 7/8" Masonry drill bit
 - 5) Hammer
 - 6) Drop-in concrete insert setting tool

General Description:

The R-7236 Bolt Down Bollard is easy to install and relocate-both indoors and out. Made from powder-coated steel, it features a wide surface flange for effective stability. Pre-drill holes in existing concrete and bolt flange into secured drop-in anchors. Select from 6 color options.

Specifications:

Height: 36"
 Diameter: 4 1/2"
 Weight: 40 lbs
 Material: Steel (ASTM A36)

Finish Options:

- ☉ Polyester Powdercoated

See Reliance Foundry's standard color options at:
www.reliance-foundry.com/bollard/colors-bollards

RELIANCE FOUNDRY
SINCE 1925

Unit 207, 6450 - 148 Street, Surrey, BC V3S 7G7, Canada
 1-888-735-5680 info@reliance-foundry.com
www.reliance-foundry.com

TITLE

Bollard R-7236

SIZE
C

DWG NO
R7236

REV
C2

PARTS LIST					
ITEM	QTY	PART NUMBER	DESCRIPTION	MATERIAL	WEIGHT
1	1	R-7236	R7236 Bollard	Steel Powder Coated	40 lbs
2	4	Drop-in Concrete Insert 5/8"	Drop-in Concrete Insert 5/8" - requires 7/8" x 2 1/2" hole (dia. x depth)	Steel Plated	1/4 lbs
3	4	Stainless Steel Washer 5/8"	Stainless Steel Washer 5/8" OD 1 1/2" Thick .06"	Stainless Steel	
4	4	Hex Bolt 5/8" x 1 1/2"	Hex Bolt 5/8" x 1 1/2" - requires 15/16" wrench	Stainless Steel	1/4 lbs

COPYRIGHT RESERVED THIS PLAN DRAWING AND DESIGN ARE, AND AT ALL TIMES REMAIN, THE EXCLUSIVE PROPERTY OF RELIANCE FOUNDRY CO. LTD.

NOT TO SCALE

SHEET 1 OF 1



TERM CONTRACT
Project Agreement No. 1 to
CBJ Construction Services for Small Civil and Utility Projects
Term Contract No. RFP E19-192(E)

South Franklin Stanchion Installation

CONTRACTOR: ENCO Alaska, Inc.

SCOPE OF WORK: The project includes procurement and installation of the following items:

1. Procure 35 (count) Reliance Foundry Bollard Posts model R-7902 with square base, chain eyes, and quick link connectors (see attached description)
2. Install and mount 16 bollards along South Franklin St per attached plan
3. Procure and install chain between installed bollards per attached plan

COMPLETION: All services under this project agreement shall be completed by May 30, 2020.

This project agreement expires on June 30, 2020, unless an amendment changing this date is fully executed prior to June 30, 2020.

REPORTING: The CBJ Project Manager for this project is Alec Venechuk. The Contractor's primary representative is Jeremiah Engen.

COMPENSATION: The Contractor shall be paid a lump sum amount of \$24,712.00 upon satisfactory completion of the services described in this Project Agreement.

CLOSEOUT. Prior to final payment, the Contractor shall provide the following Alaska Department of Labor documents to the Contract Administrator:

- Employment Security Tax Clearance (form will be included with the Notice to Proceed) for prime and all subcontractors, if applicable.
- DOL approved Notice of Completion. *IF APPLICABLE*

IN WITNESS WHEREOF, the parties have executed this Project Agreement.

ENCO Alaska, Inc

Jeremiah Engen
President
je@encoalaska.com

4/17/20
Date

City & Borough of Juneau

Greg Smith
Engineering Contracts Administrator

4-17-20
Date

Caleb Comas

To: Alec Venechuk
Subject: RE: [EXT] FW: S. Franklin bollard pics

From: Tobias Lockhart <TLockhart@dowl.com>
Sent: Thursday, December 3, 2020 1:36 PM
To: Alec Venechuk
Subject: RE: [EXT] FW: S. Franklin bollard pics

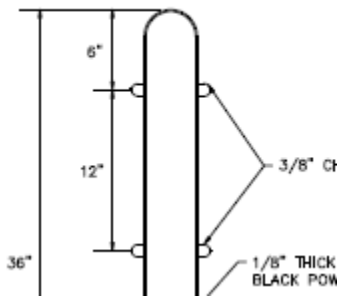
EXTERNAL E-MAIL: BE CAUTIOUS WHEN OPENING FILES OR FOLLOWING LINKS

Hi Alec

I was still planning on specifying the reliance foundry bollards, but decided it would be a bit more appropriate to call that out in the specs instead of the drawings.

For what it's worth, when I called Reliance about lead times last month the information I received reflected the change from R-7902 to R-7236.

I was not aware of an issue with the chain heights. I believe Jer may have mis-read the detail which shows the chain eyes at 6" and 18" from the top of the bollard. The lower eye is 12" below the upper eye, and not 12" below the top of the bollard. See below.



I wasn't aware of the change to bolted eyes, but I can make that change to our drawings.

Thanks,

Tobias Lockhart, PE
Senior Civil Engineer

DOWL

(907) 780-3533 | office
(907) 523-5760 | direct
(907) 209-4232 | cell

From: Alec Venechuk <Alec.Venechuk@juneau.org>
Sent: Wednesday, December 2, 2020 3:35 PM
To: Tobias Lockhart <TLockhart@dowl.com>
Subject: [EXT] FW: S. Franklin bollard pics

WARNING: External Sender - use caution when clicking links and opening attachments.

Hey Toby,

Following up on a few things - Were you planning on not specing the reliance foundry stanchion again this time around? As an FYI regarding model number and eyelet spacing of the Reliance stanchion, I ran into these issues below with ENCO when they ordered stanchions this summer. We adjusted this year's stanchions to match the original ones Arete purchased.

-Alec

From: Jeremiah Engen <je@encoalaska.com>

EXTERNAL E-MAIL: BE CAUTIOUS WHEN OPENING FILES OR FOLLOWING LINKS

Alec, bad news. The model already installed and in the pictures is not the specified R-7902. Appropriate model is the R-7236. 7236 has the attached square flange and is slightly larger in OD. The 7902 does not have the same style square base, it's base stays attached to the sidewalk. As a check, they dug into their archives and pulled Arete's order and it is confirmed the same as delivered last year. Also, additional requests were made as well. Previous order requested the chain eyes to be bolted and not welded as shown in the provided detail. Drilled locations were requested to be at 6" and 18". Not at the specified 6" and 12" as shown on detail. The bad news is they already drilled the wrong bollards. I've been told this will cost but have not received an answer on amount or time involved in making the correct bollards. I assume you would like to have the order corrected to have the same same. If they want the bollards paid for it'll be a 10k addition. Let me know what direction to go asap to keep from further stalling things out.

Jer
