

Jensen
Yorba
Wall Inc.

522 West 10th Street
Juneau, Alaska 99801
907.586.1070
AECC137
jensenyorbawall.com



CITY AND BOROUGH OF JUNEAU SCHOOL DISTRICT
RIVERBEND ELEMENTARY SCHOOL
ROOFING REPLACEMENT
CBJ CONTRACT NO. BE22-164
JUNEAU, ALASKA

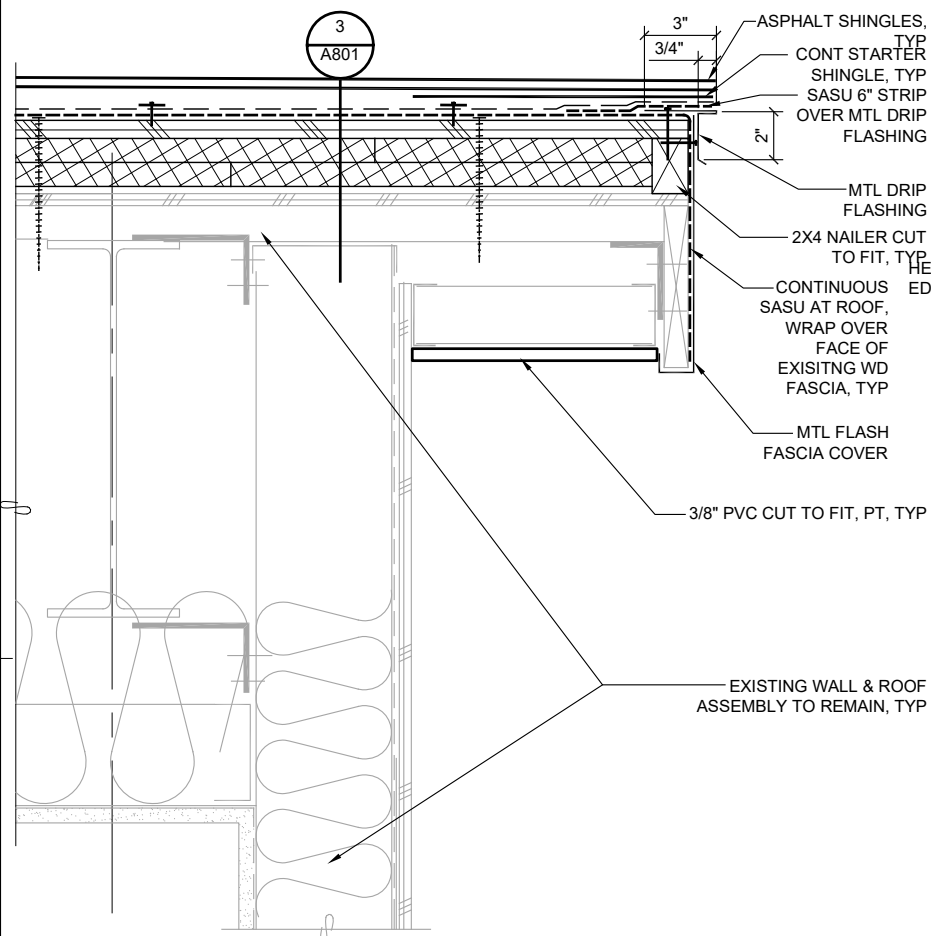
REVISIONS

- ADD 1 - 12/10/2021

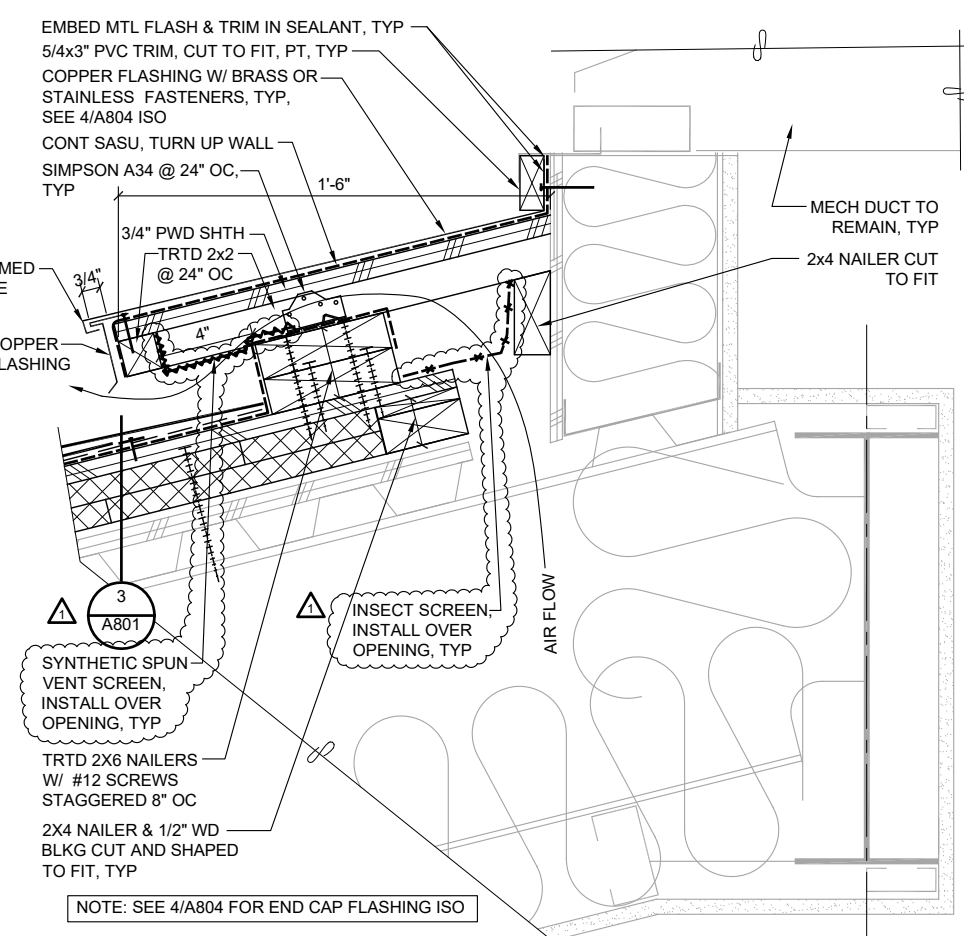
SHEET TITLE
**EXTERIOR
DETAILS**

DATE: NOVEMBER 12, 2021
FILE: 21037

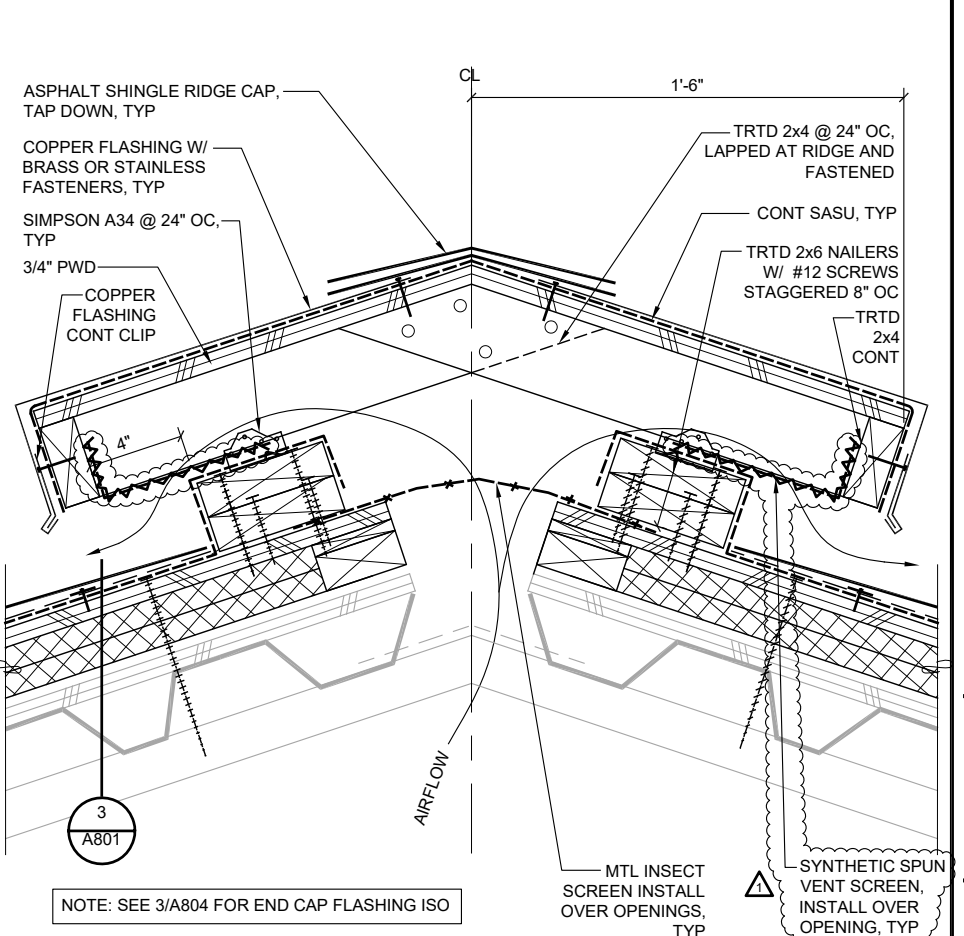
A802



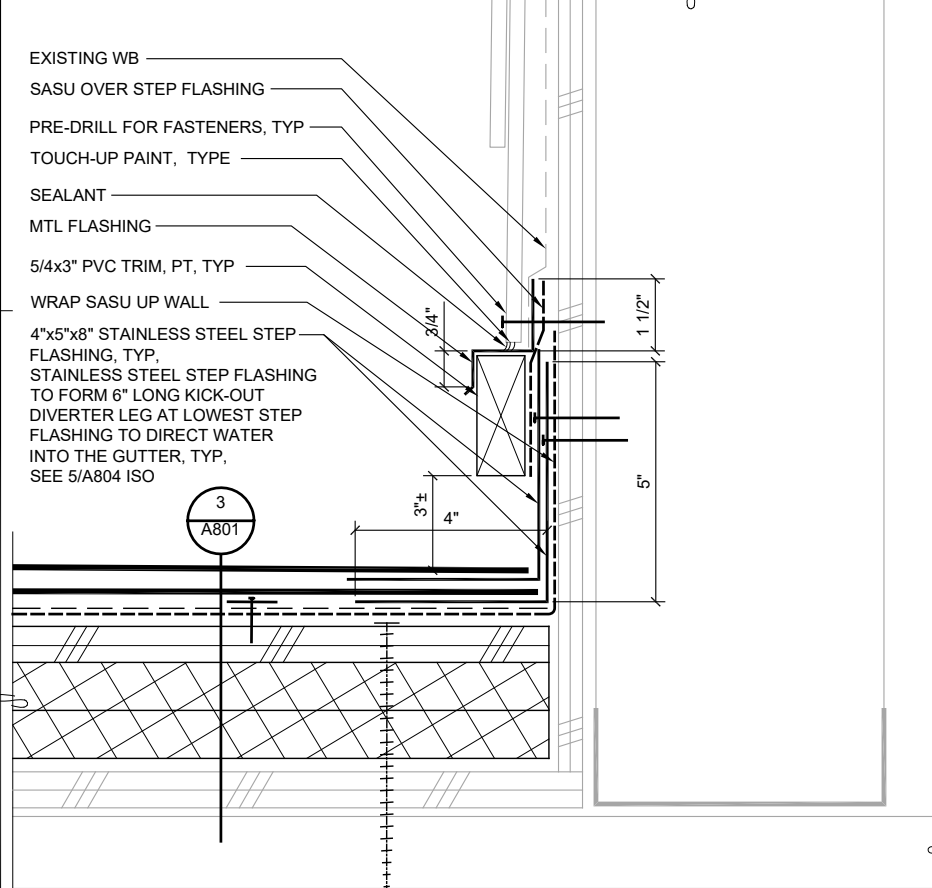
1 RAKE END DETAIL
21037 - X_A802-1 SCALE: 0 3" 6" 1"



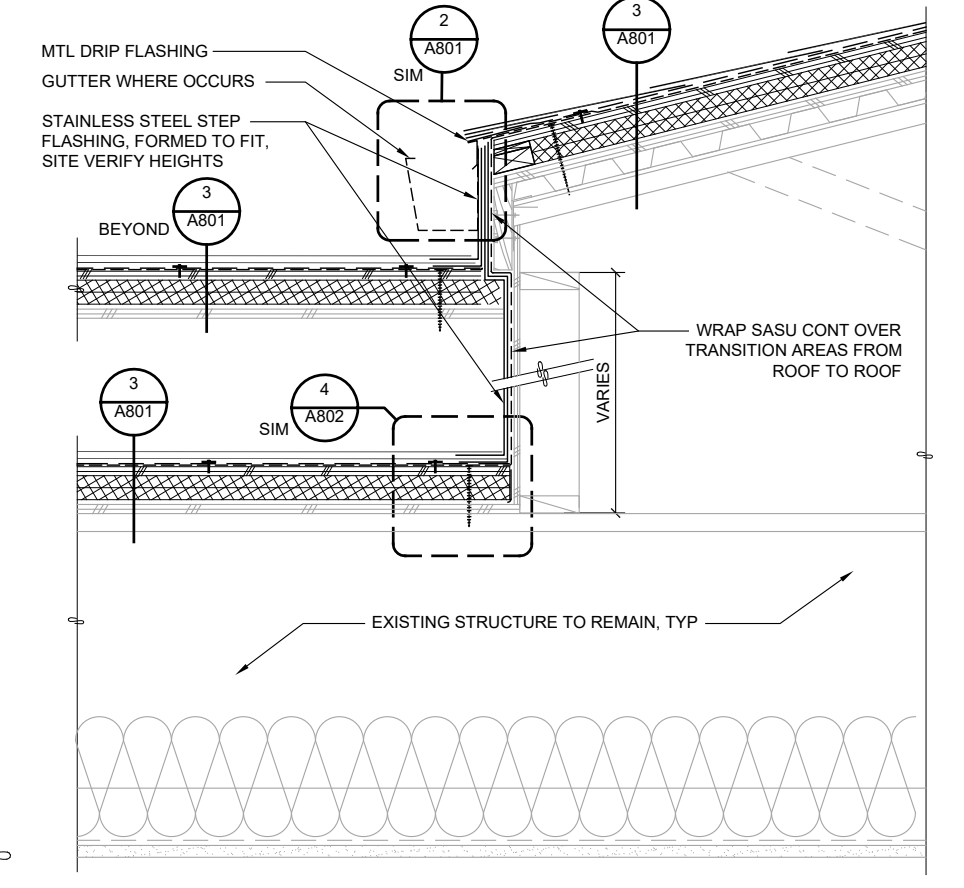
2 ROOF TO WALL AT LOUVER
21037 - X_A802-2 SCALE: 0 3" 6" 1"



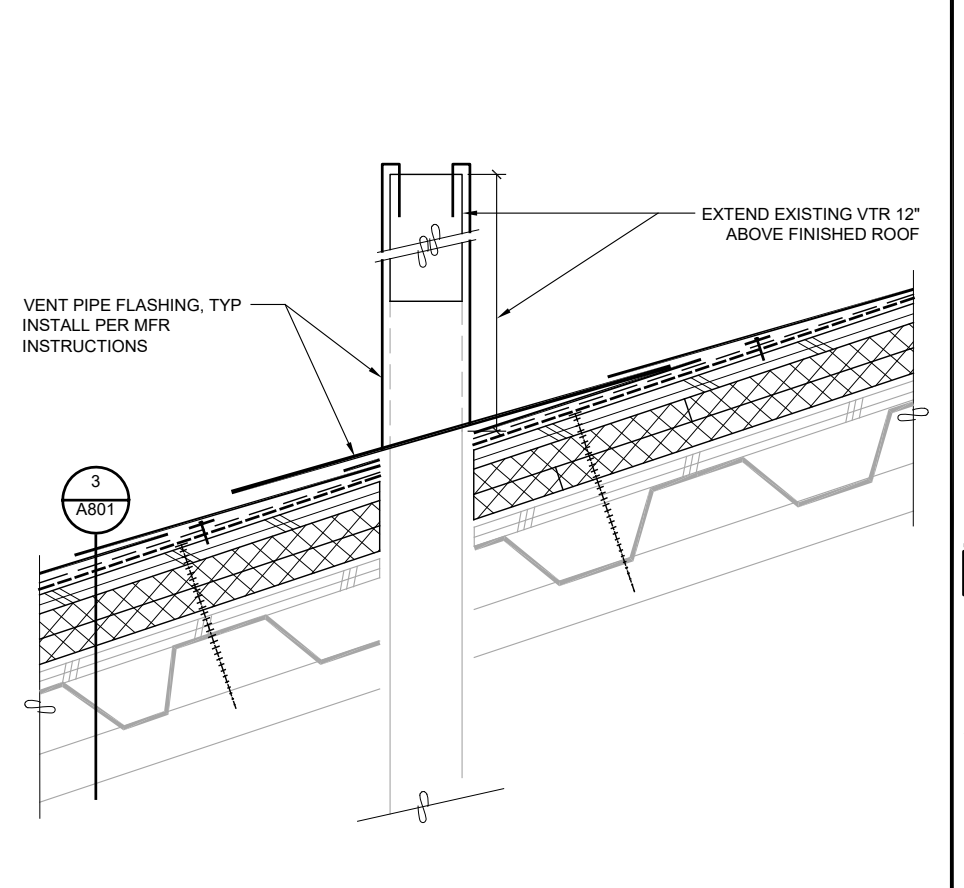
3 RIDGE VENT, TYP
21037 - X_A802-3 SCALE: 0 3" 6" 1"



4 STEP FLASHING
21037 - X_A802-4 SCALE: 0 3" 6"



5 ROOF TRANSITION
21037 - X_A802-5 SCALE: 0 6" 1" 2"



6 DEMO VTR FLASHING
21037 - X_A802-6 SCALE: 0 3" 6" 1"

G:\Projects\21037\CAD\CD\Addenda\A802.dwg, Layout1, 12/10/2021 9:06:15 AM, Dan, Adobe PDF 11X17.pc3, Tabloid, 1:2