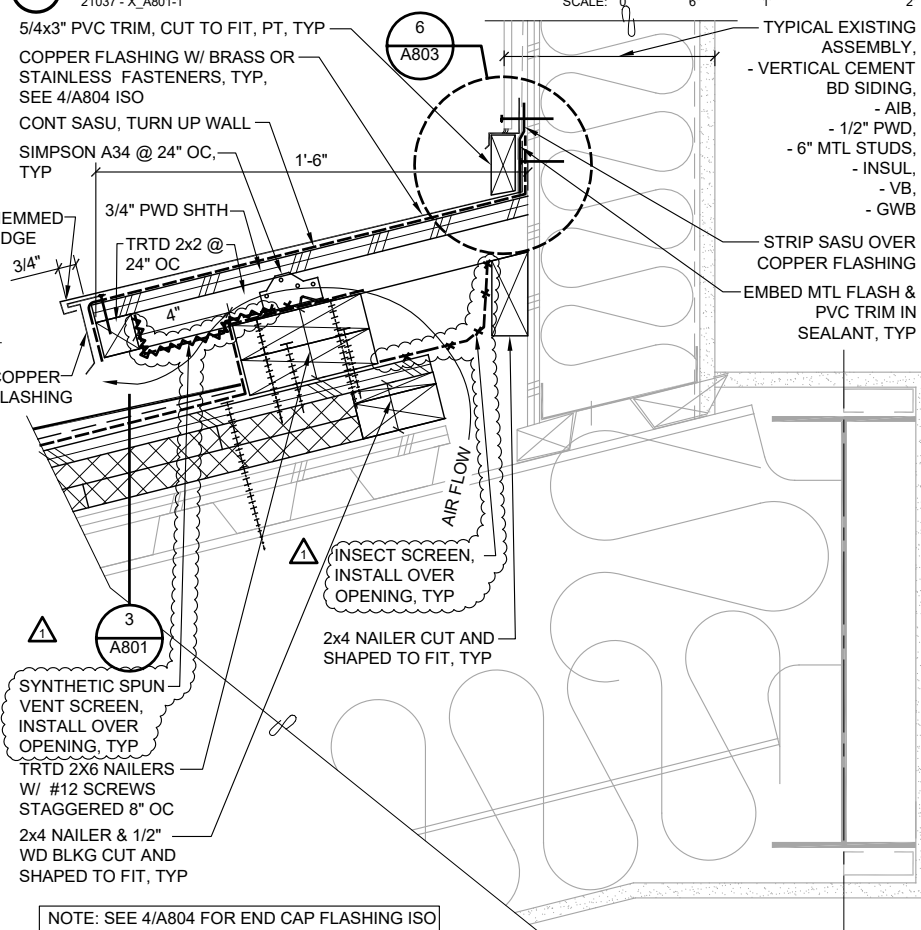
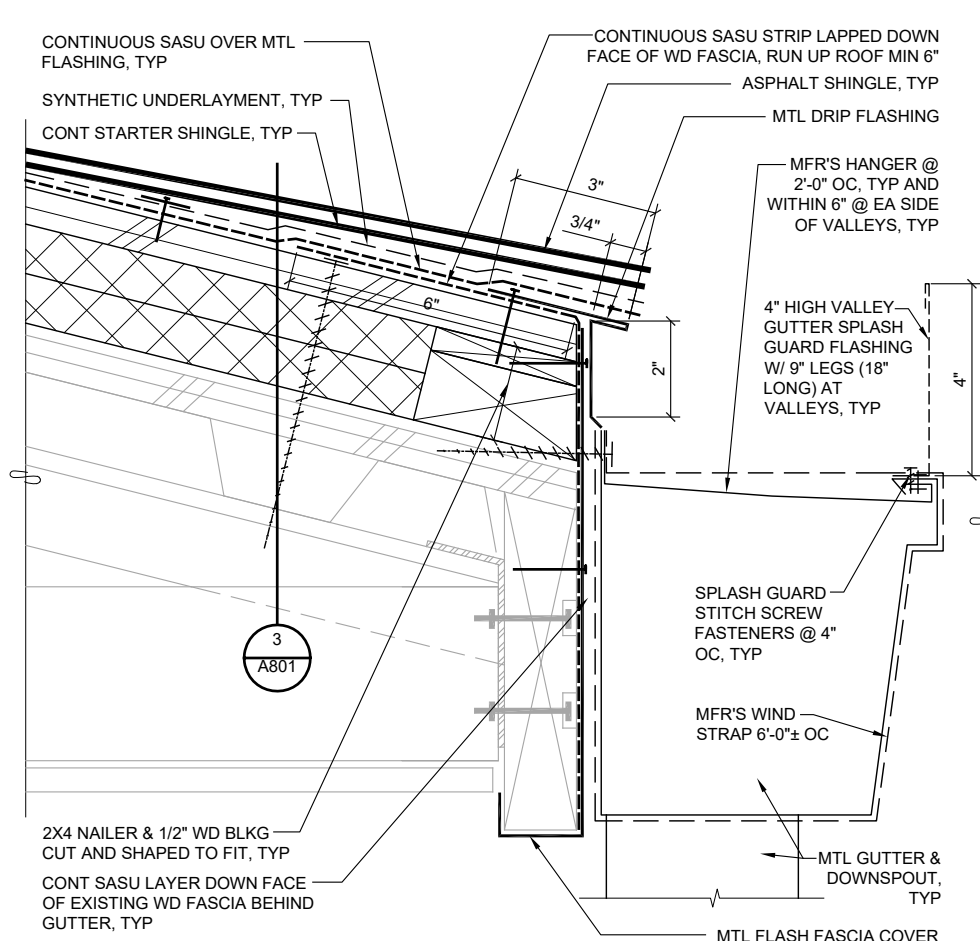


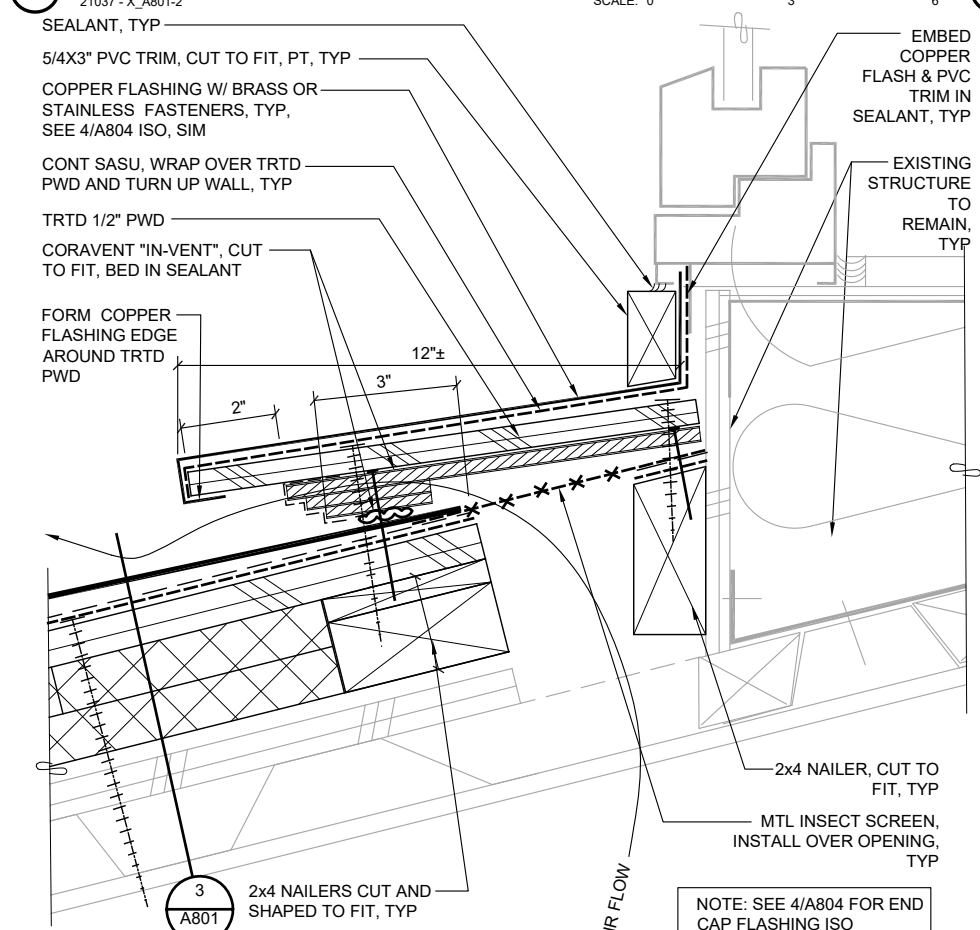
1 ROOF DETAIL, TYP
21037 - X_A801-1



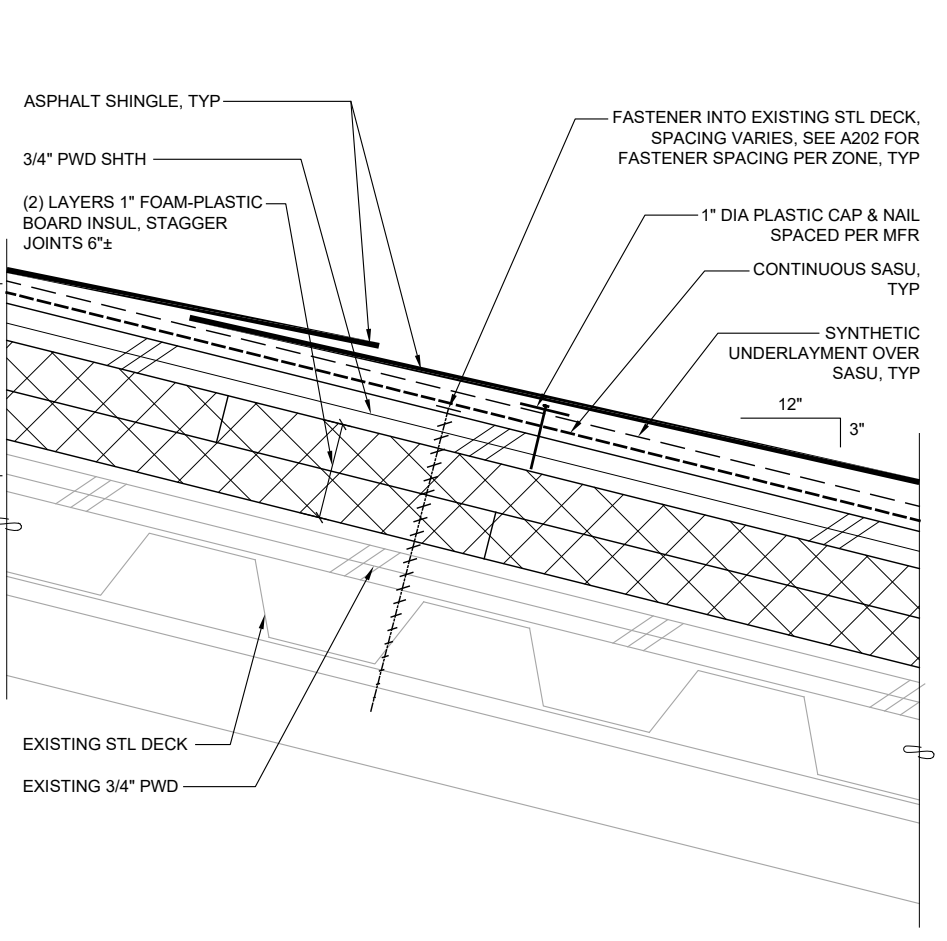
4 ROOF TO WALL
21037 - X_A801-4



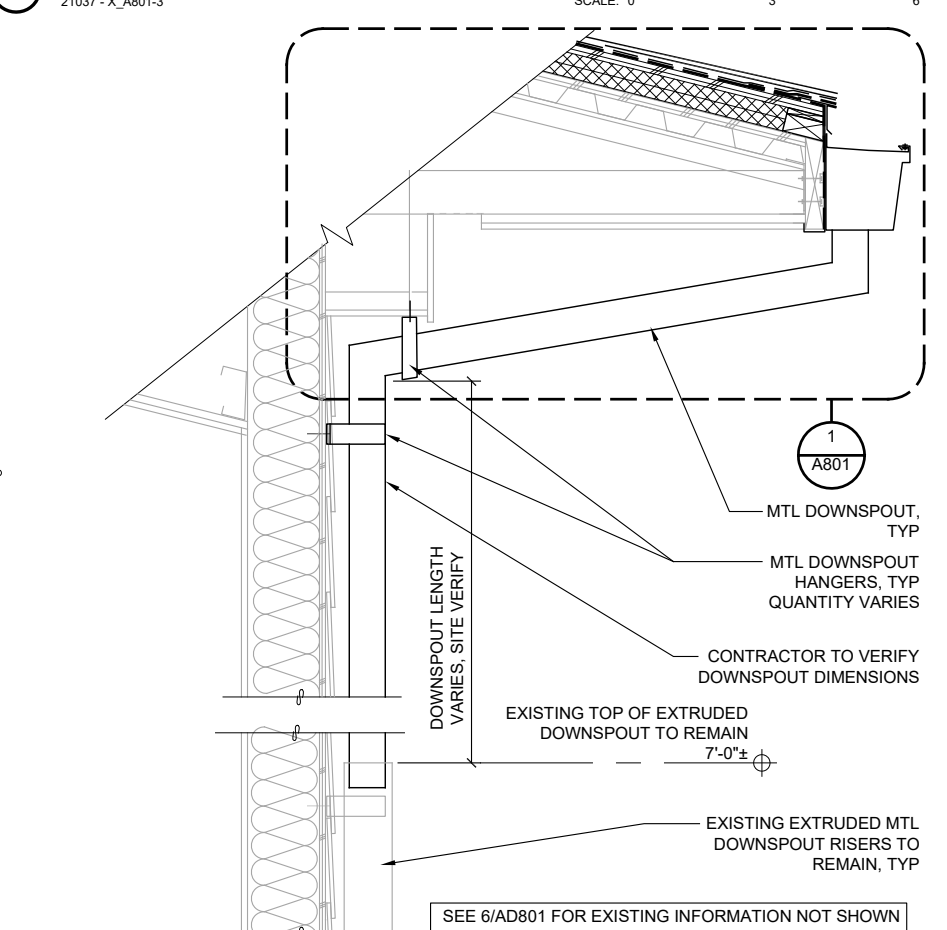
2 EAVE & GUTTER DETAIL, TYP
21037 - X_A801-2



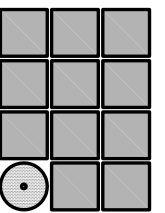
5 ROOF TO WALL @ CLEARSTORY
21037 - X_A801-5



3 ROOF ASSEMBLY DETAIL, TYP
21037 - X_A801-3



6 DOWNSPOUT, TYP
21037 - X_A801-6



Jensen
Yorba
Wall Inc.

522 West 10th Street
Juneau, Alaska 99801
907.586.1070
AECC137
jensenyorbawall.com



CITY AND BOROUGH OF JUNEAU SCHOOL DISTRICT
RIVERBEND ELEMENTARY SCHOOL
ROOFING REPLACEMENT
CBJ CONTRACT NO. BE22-164
JUNEAU, ALASKA

REVISIONS

ADD 1	12/10/2021
-------	------------

SHEET TITLE
**EXTERIOR
DETAILS**

DATE: NOVEMBER 12, 2021
FILE: 21037

A801

G:_Projects\21037\CAD\CD\Addenda\A801.dwg, Layout1, 12/10/2021 9:06:48 AM, Dan, Adobe PDF 11X17.pc3, Tabloid, 1:2