



City and Borough of Juneau
 City & Borough Manager's Office
 155 South Seward Street
 Juneau, Alaska 99801
 Telephone: 586-5240 | Facsimile: 586-5385

DATE: December 27, 2021
 TO: CBJ Assembly
 FROM: Robert Barr, Incident Commander
 RE: **Situational Update –Level 2 Moderate**

Overall Community Risk	Disease Situation	Hospital Capacity	Public Health Capacity	The Complete CBJ COVID-19 Dashboard can be found here or by going to Juneau.org/ COVID-19
Level 2 - Moderate	The community case load remains high and, recently, has been stable. The Delta variant is present and community spread is occurring. Vaccine is available.	Local hospital case loads and staffing capacity are stable, although staffing levels remain dependent on a state contract. Medevac capacity is stable.	Most positive individuals are being reached within 24 hours. Approximately half of recent case activity is secondary in nature.	

Situation Assessment:

The 14 and 7 day case rates remain at the high alert level. The Delta variant remains the dominant variant of concern locally and statewide. The community is urged to take advantage of vaccination, masking, and testing - the three most effective tools we have at combating the pandemic. Individuals not yet fully vaccinated are required to mask when indoors in public places. Social distancing remains recommended to mitigate disease spread and allow for effective contact tracing. Individuals should test immediately if they have even mild symptoms. **The single most effective strategy to mitigate COVID is to get vaccinated.**

Issues of Note:

We have started to see case activity trend upwards locally, averaging approximately 13-14 new cases a day over the long weekend. Notably, over half of our recent cases are in fully vaccinated individuals. A fully vaccinated individual with COVID-19 is significantly less likely (~10x) to burden the healthcare system than a case in an unvaccinated individual. Of the major population areas tracked statewide, Juneau was the only location with a vaccine breakthrough rate greater than 50% for the most recent VB tracking period (Dec 12 – Dec 18). The risk of reinfection with the Omicron variant is estimated to be [5.4x greater](#) than the risk of reinfection with delta. Upward trends in case activity remain concerning and the EOC will continue to pay close attention to this recent trend, along with other risk indicators, and adjust community mitigation strategies accordingly.

Most of our distribution sites ran out of rapid antigen tests over the weekend or today. We expect an additional shipment (again weather dependent) to arrive this week, which should allow them to re-open. This trend of availability/unavailability will likely continue in the coming weeks and will present

communication challenges with the public. The EOC continues to explore direct purchase of rapid antigen tests to supplement federal/state supply.

BRH reports stable staffing and stable hospital activity across the board. BRH staff expect hospitals across the state to see increased challenges with staffing when the statewide traveling healthcare worker contract expires on January 18th. The state plans on a phased rather than all-at-once departure of the traveling workers.

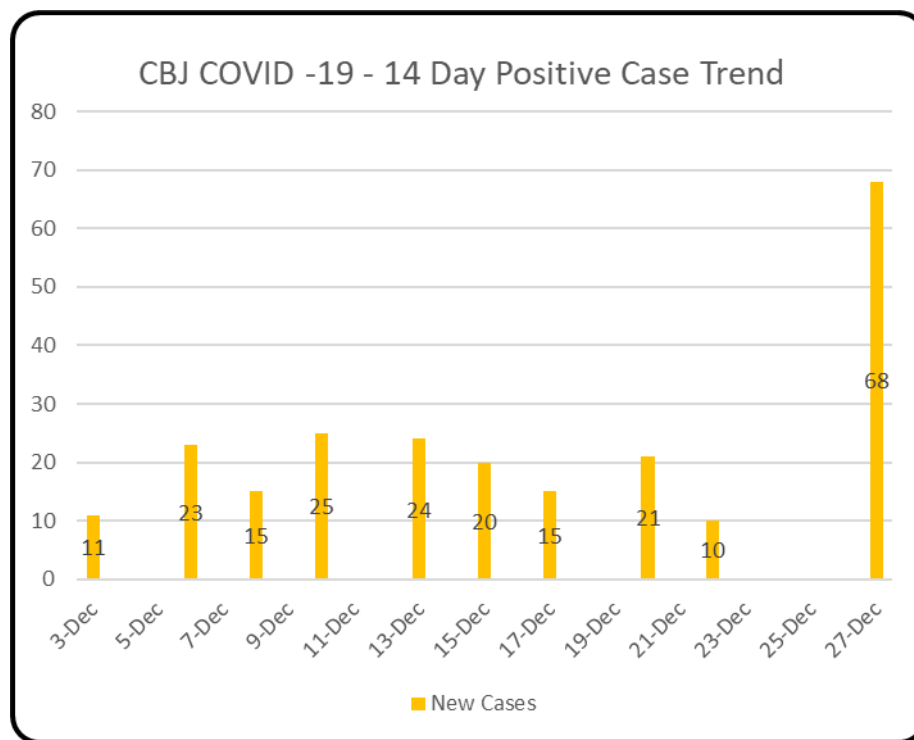
We have received questions, but do not yet have answers, regarding the availability of Pfizer’s new antiviral medication, Paxlovid.

General Case Trends:

Juneau Public Health was not able to report generalized case trends today due to staffing shortages. That said, we happily report that one of our Public Health colleagues is newly out on maternity leave – both mom and baby are healthy.

Daily Numbers update: We are reporting 78 new cases since the last EOC report on December 20th (M-M).

Statewide, the Alaska Department of Health and Social Services reports 849 new people identified with COVID-19 for data reported 12/22-12/26. The state reports 0 new deaths. The total number of resident deaths is 945. Alaska has had 150,643 cumulative resident cases of COVID-19 and a total of 5,534 nonresidents.



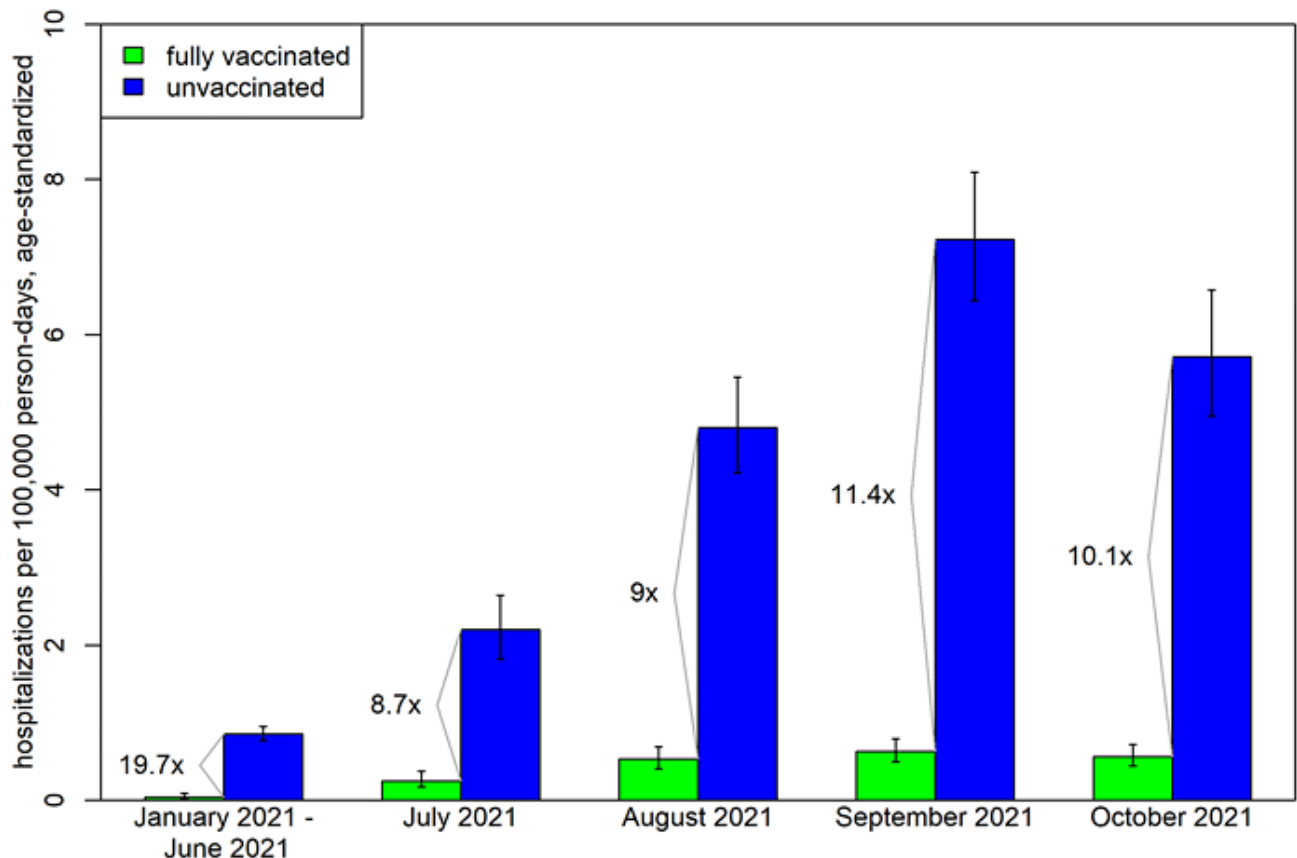
Breakthrough Cases: Vaccine breakthrough (VB) infections of COVID are those detected in a person who is at least 2 weeks beyond their second dose of a 2-dose series or the only dose of a 1-dose series.

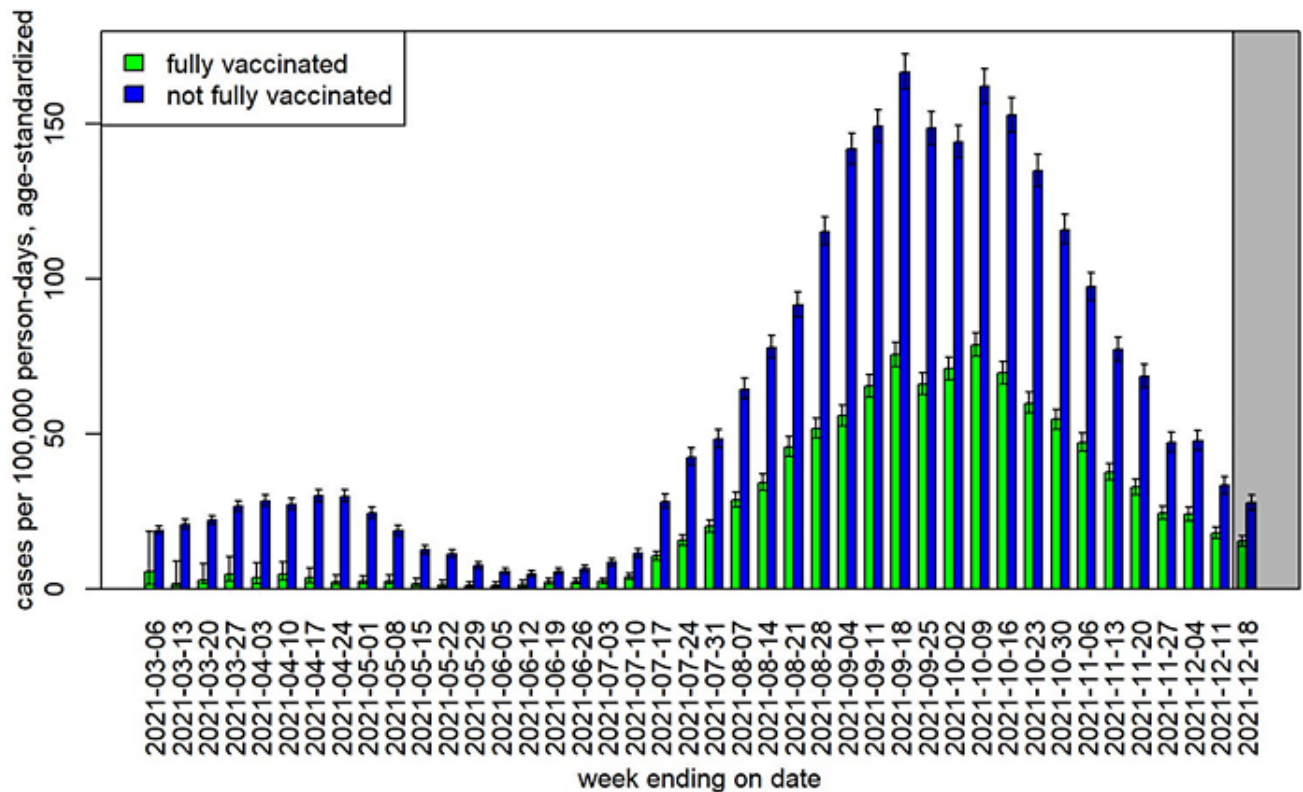
From January 16–December 18, 2021, 112 deaths, 340 hospitalizations, and 25,328 cases with a VB infection were reported among Alaska residents aged ≥ 5 years. These counts are provisional and subject to change as data are compiled and reviewed. In that same time frame, a total of 93,437 cases, 2,023 hospitalizations, and 631 deaths were reported.

73% of all cases, 83% of all hospitalizations, and 82% of deaths among Alaska residents aged ≥ 12 years from January 16–December 18, 2021 were in people who were not fully vaccinated.

Between December 12 and December 18, Juneau had a vaccine breakthrough rate of 58.3%. Of the major population areas tracked statewide, Juneau was the only area with a rate greater than 50%. This is attributable to our high vaccination rate.

More detailed information about hospitalizations, deaths, repeat and vaccine breakthrough infections among Alaska residents can also be found in the DHSS [monthly report](#), which includes data through October.



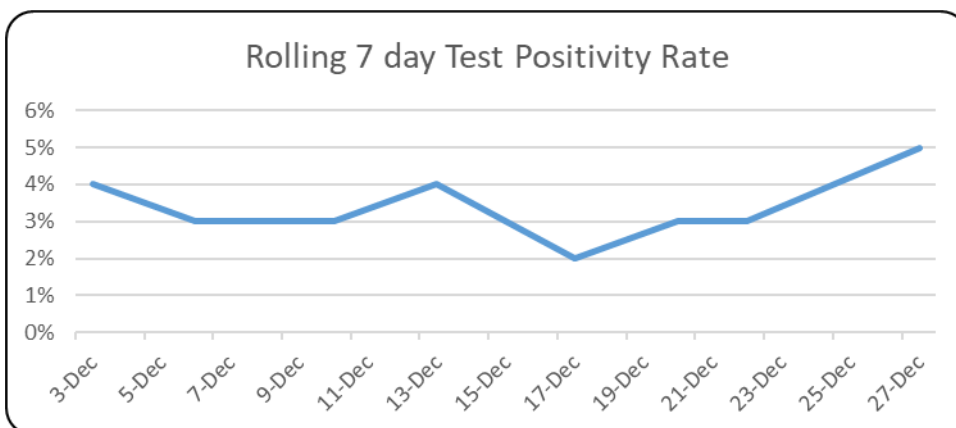


Variants of Concern:

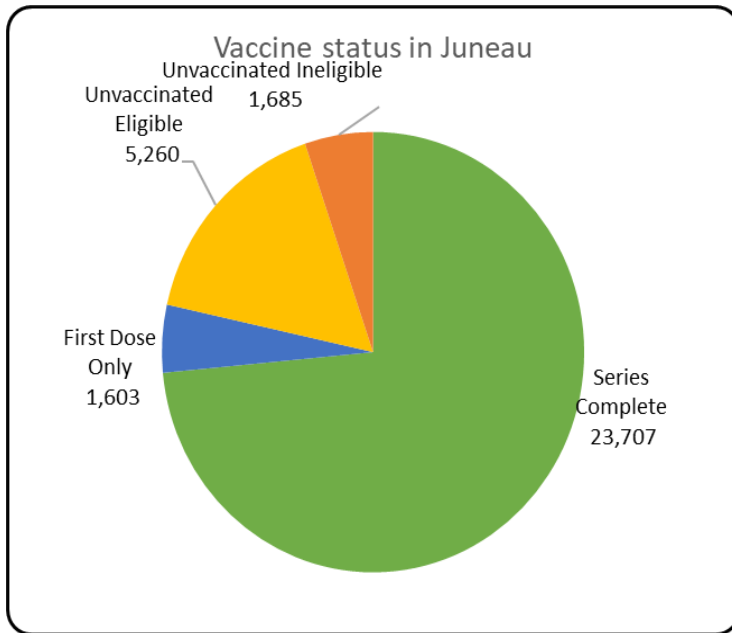
The Delta variant continues to be the dominant SARS-CoV-2 variant in Alaska. Information on the Omicron variant is sparse at the moment; two cases have been identified in Alaska to date; however, based on recent case activity trends, Omicron is almost certainly spreading throughout the state. The State of Alaska variants dashboard is available online: <https://akvariants.github.io/>

Testing Summary:

PCR testing at BRH continues to return results in under 24 hours, with very few exceptions.



Vaccination Updates:



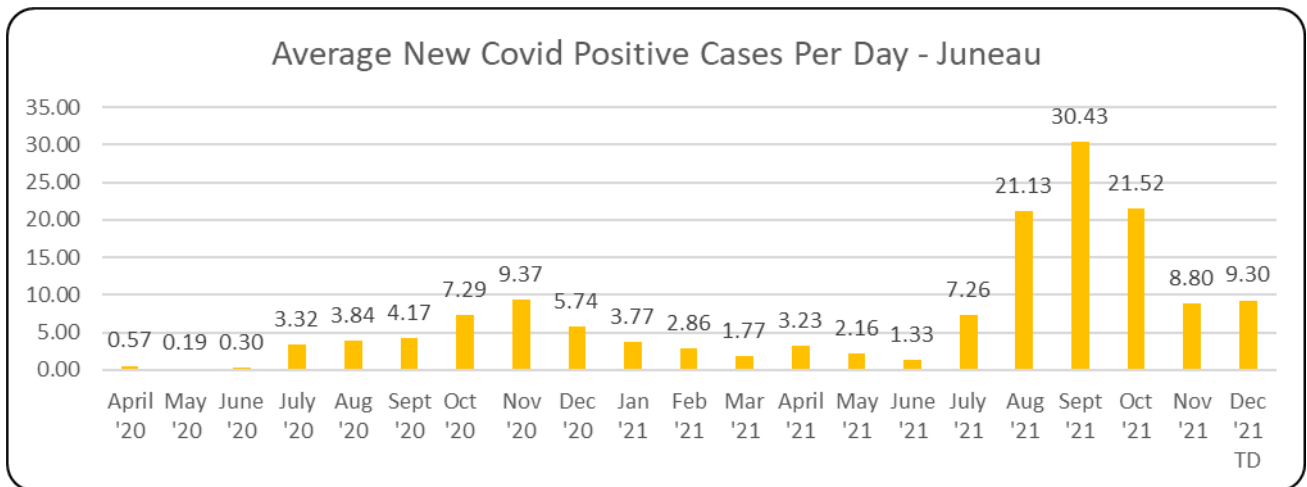
Total: **78.5%** of the total population of Juneau has received at least 1 dose of vaccine and **73.5%** have completed their vaccine series.

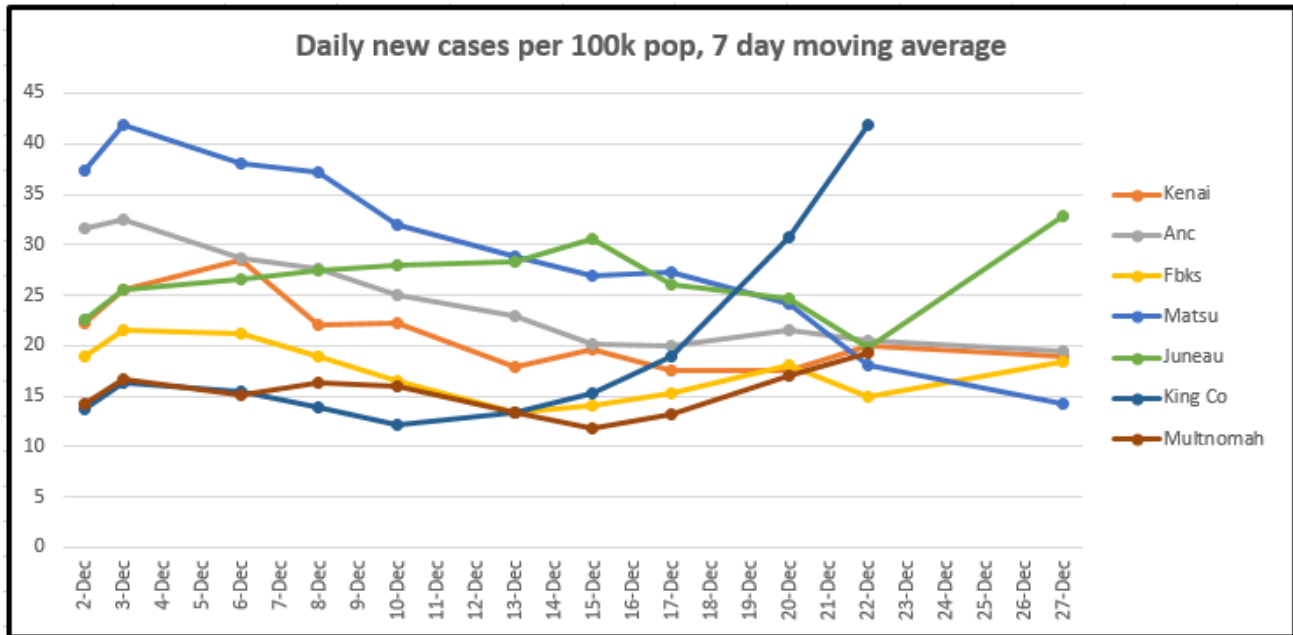
5+: **82.8%** of the age eligible Juneau population has received at least 1 dose of vaccine. **77.5%** have completed their vaccine series.

34.6% of those 5+ have received a booster dose.

65+: **96%** of this age group has at least one dose of vaccine. **92%** have completed the vaccine series.

69.5% of those 65+ have received a booster dose.





This chart tracks the number of new cases in the past 7 days, controlled for population. King County (Seattle) and Multnomah County (Portland) are included for context and due to travel frequency. The source data for Alaska is from the SOA dashboard. Out of state data is from the Harvard Global Health Institute (<https://globalepidemics.org/key-metrics-for-covid-suppression/>) and generally lags a day behind most of our other reporting. Policy recommendations at varying levels (<1, <10, <25, 25+) can be found on their website