



City and Borough of Juneau  
 City & Borough Manager's Office  
 155 South Seward Street  
 Juneau, Alaska 99801  
 Telephone: 586-5240 | Facsimile: 586-5385

DATE: December 20, 2021  
 TO: CBJ Assembly  
 FROM: Robert Barr, Incident Commander  
 RE: **Situational Update –Level 2 Moderate**

Overall Community Risk	Disease Situation	Hospital Capacity	Public Health Capacity	<b>The Complete CBJ COVID-19 Dashboard can be found <a href="#">here</a> or by going to <a href="#">Juneau.org/ COVID-19</a></b>
<b>Level 2 - Moderate</b>	The community case load remains high and, recently, has been stable. The Delta variant is present and community spread is occurring. Vaccine is available.	Local hospital case loads and staffing capacity are stable, although staffing levels remain dependent on a state contract. Medevac capacity is stable.	Most positive individuals are being reached within 24 hours. Approximately half of recent case activity is secondary in nature.	

**Situation Assessment:**

The 14 and 7 day case rates remain at the high alert level. The Delta variant remains the dominant variant of concern locally and statewide. The community is urged to take advantage of vaccination, masking, and testing - the three most effective tools we have at combating the pandemic. Individuals not yet fully vaccinated are required to mask when indoors in public places. Social distancing remains recommended to mitigate disease spread and allow for effective contact tracing. Individuals should test immediately if they have even mild symptoms. **The single most effective strategy to mitigate COVID is to get vaccinated.**

**Issues of Note:**

Not much has changed over the weekend since Friday's EOC report. We continue to see trickles of information out of the scientific community regarding the Omicron variant. An [Imperial College of London study](#) was published on Friday that indicated increased transmission risk, increased reactivity risk, and no evidence of less severity. Another new [report from South Africa's largest private insurance administrator](#) seems to indicate a 29% reduction in hospitalization risk for adults and perhaps a 20% increase (but very low incidence) in hospitalization risk for children. In all recent Omicron studies, researchers are quick to note that the amount of data currently available remains limited and all conclusions at this point are preliminary. The one conclusion that seems solid at this point is that Omicron is substantially more transmissible and that vaccine booster doses are strongly recommended for those who are eligible.

We continue to distribute rapid antigen self-tests to members of the public through our distribution locations – City Hall, each Public Library, Public Health, JPD, and the Dimond Park Aquatic Center. While we do not have a stockpile of tests at our warehouse anymore, our distribution sites still have tests available.

We expect (weather dependent) to receive another small batch of tests this week which should continue to keep our distribution sites active through the end of the month.

BRH reports stable staffing and stable hospital activity across the board. BRH staff expect hospitals across the state to see increased challenges with staffing when the statewide traveling healthcare worker contract expires on January 18<sup>th</sup>. The state plans on a phased rather than all-at-once departure of the traveling workers.

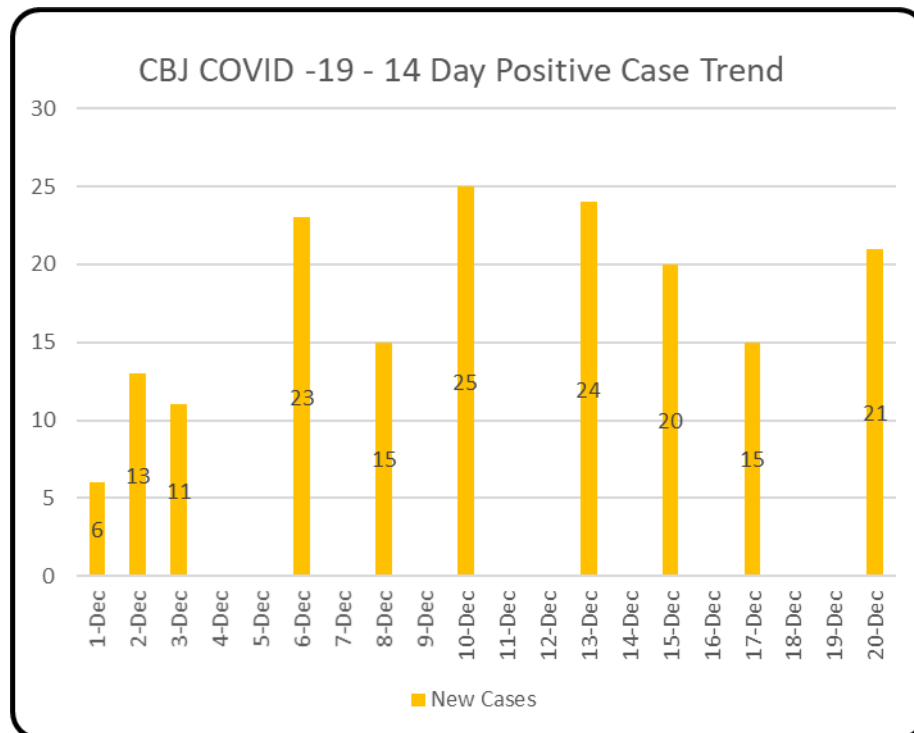
**General Case Trends:**

Juneau Public Health was able to report generalized case trends:

- We have roughly 53 active cases
- Of those a little over a third are secondary, a little over a third are unknown, and about a fifth are community spread

**Daily Numbers update:** We are reporting 21 new cases since the last EOC report on December 17<sup>th</sup> (F-M).

Statewide, the Alaska Department of Health and Social Services reports 422 new people identified with COVID-19 for data reported 12/17-12/19. The state reports 0 new deaths. The total number of resident deaths is 915. Alaska has had 149,591 cumulative resident cases of COVID-19 and a total of 5,471 nonresidents.

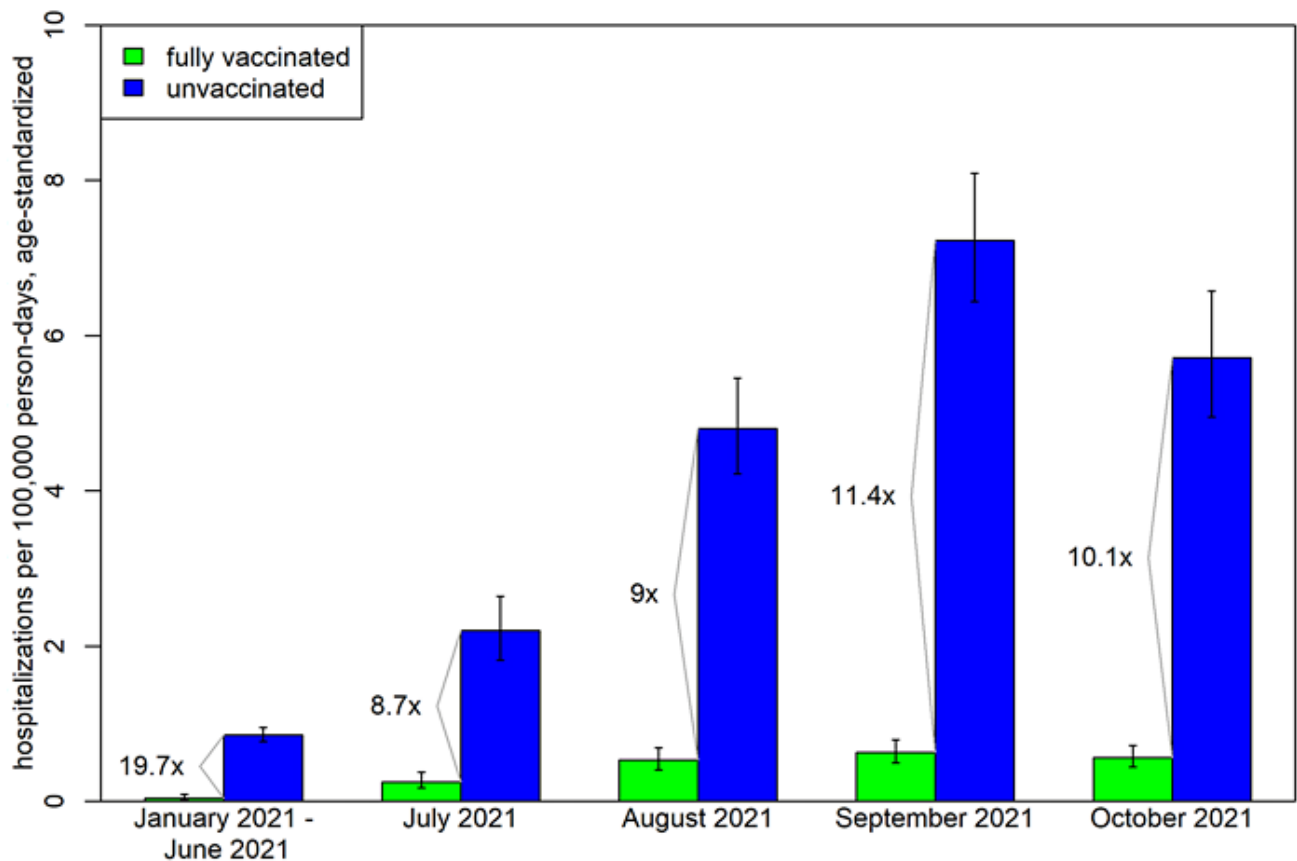


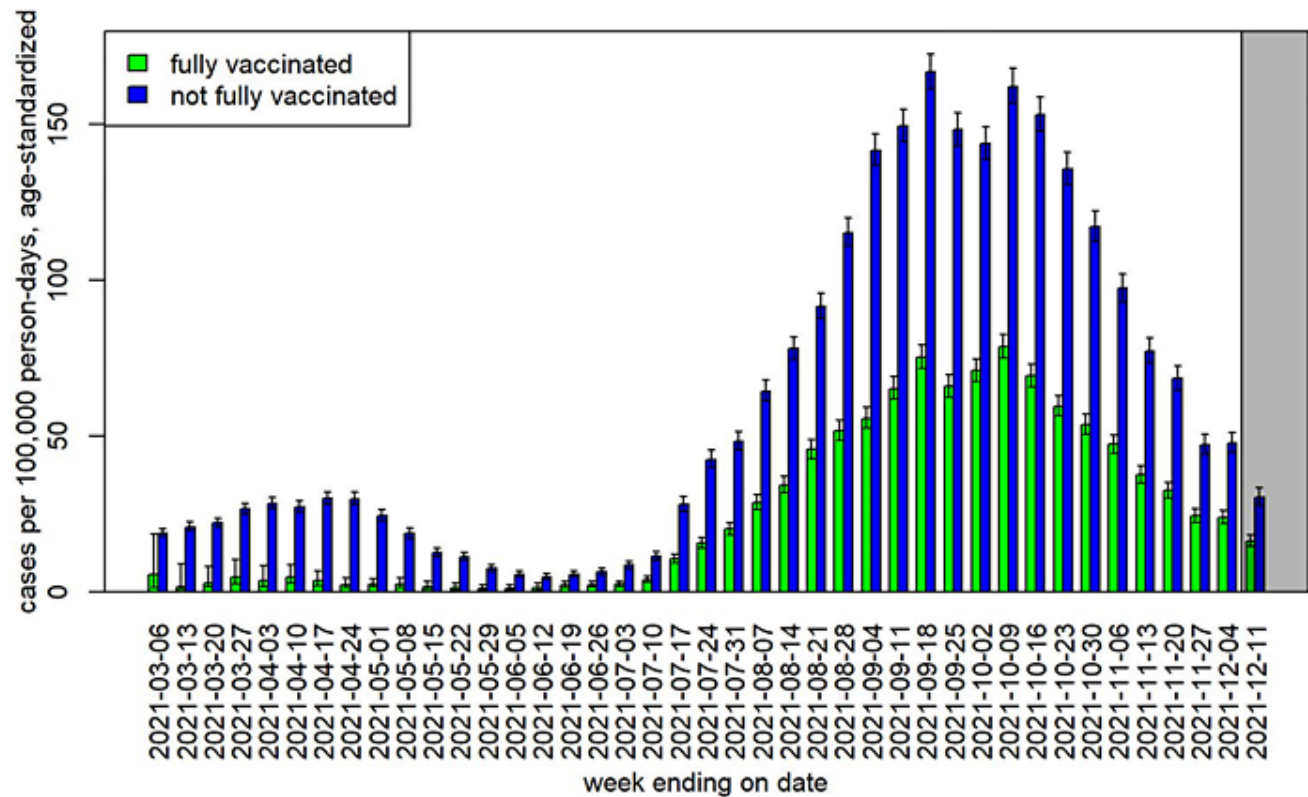
**Breakthrough Cases:** Vaccine breakthrough (VB) infections of COVID are those detected in a person who is at least 2 weeks beyond their second dose of a 2-dose series or the only dose of a 1-dose series.

From January 16–December 11, 2021, 100 deaths, 317 hospitalizations, and 24,841 cases with a VB infection were reported among Alaska residents aged  $\geq 5$  years. These counts are provisional and subject to change as data are compiled and reviewed. In that same time frame, a total of 92,352 cases, 1,936 hospitalizations, and 546 deaths were reported.

73% of all cases, 84% of all hospitalizations, and 82% of deaths among Alaska residents aged  $\geq 12$  years from January 16–December 11, 2021 were in people who were not fully vaccinated.

More detailed information about hospitalizations, deaths, repeat and vaccine breakthrough infections among Alaska residents can also be found in the DHSS [monthly report](#), which includes data through October.



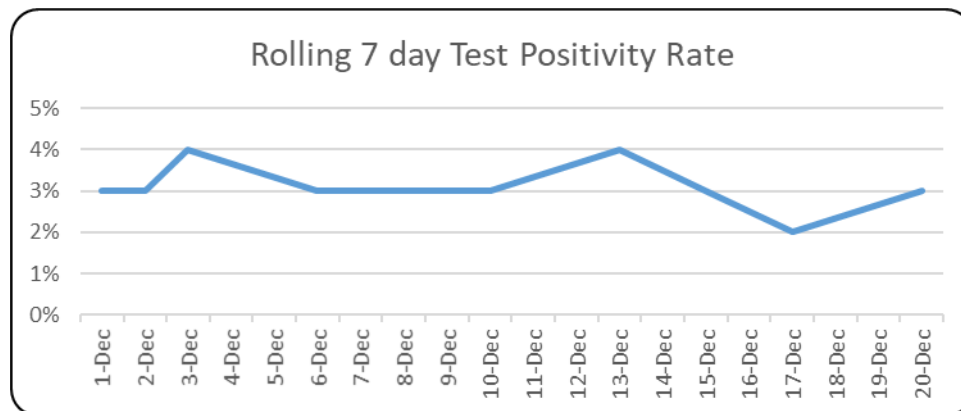


**Variants of Concern:**

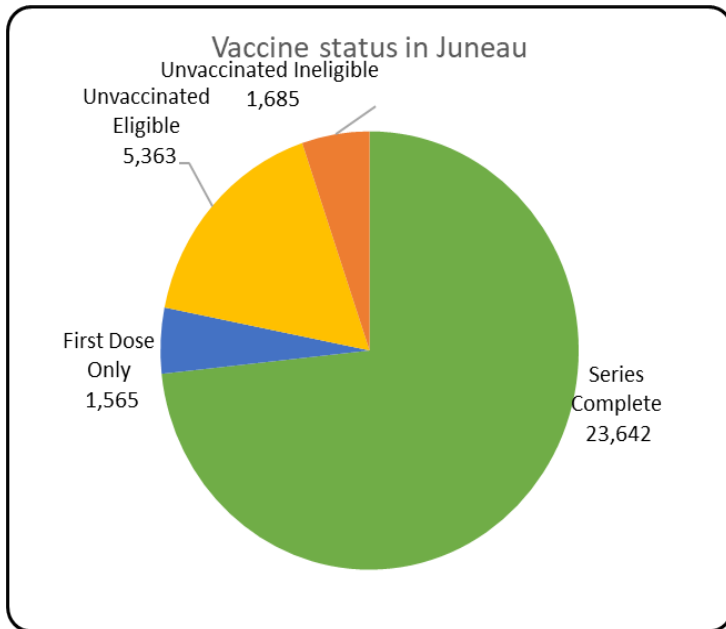
The Delta variant continues to be the dominant SARS-CoV-2 variant in Alaska. Information on the Omicron variant is sparse at the moment; one case has been identified in Alaska to date. The State of Alaska variants dashboard is available online: <https://akvariants.github.io/>

**Testing Summary:**

PCR testing at BRH continues to return results in under 24 hours, with very few exceptions.



**Vaccination Updates:**



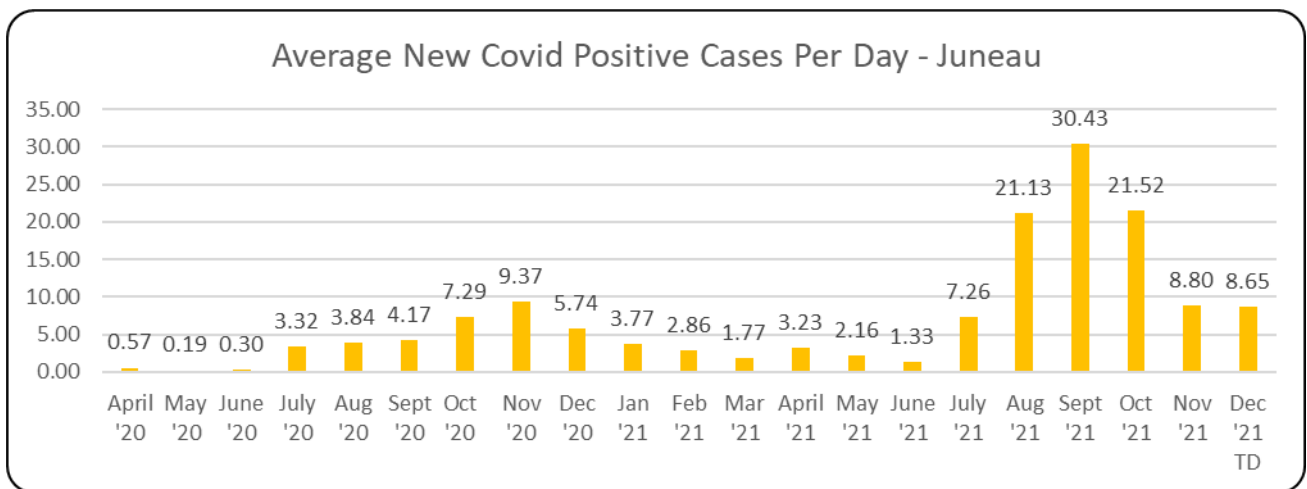
Total: **78.1%** of the total population of Juneau has received at least 1 dose of vaccine and **73.3%** have completed their vaccine series.

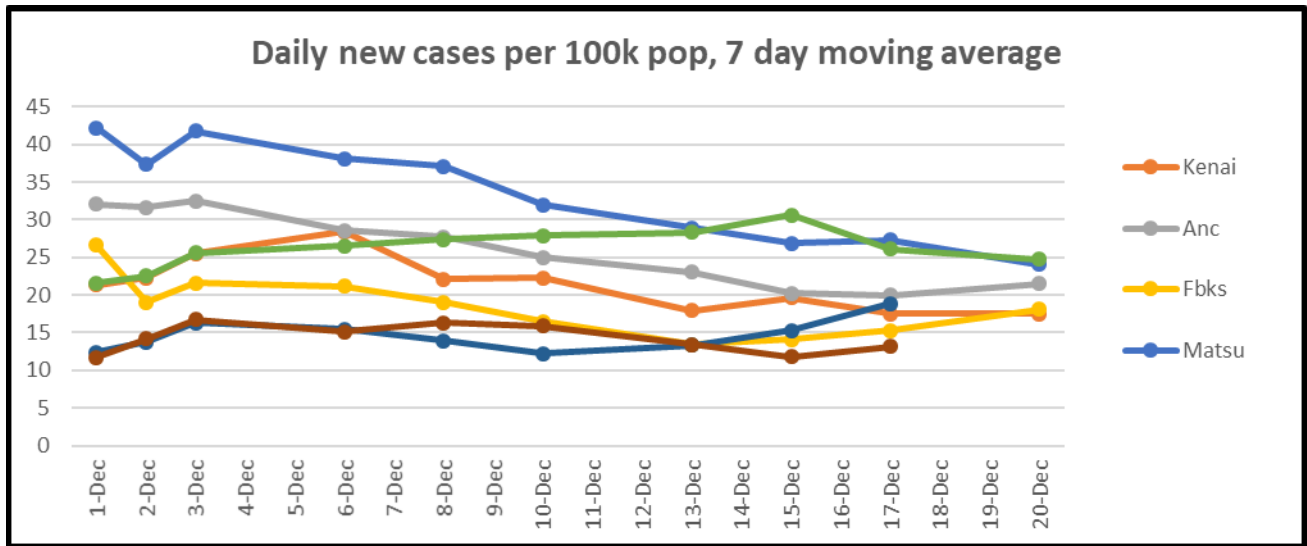
5+: **82.5%** of the age eligible Juneau population has received at least 1 dose of vaccine. **77.3%** have completed their vaccine series.

**33.1%** of those 5+ have received a booster dose.

65+: **96%** of this age group has at least one dose of vaccine. **92%** have completed the vaccine series.

**68.4%** of those 65+ have received a booster dose.





This chart tracks the number of new cases in the past 7 days, controlled for population. King County (Seattle) and Multnomah County (Portland) are included for context and due to travel frequency. The source data for Alaska is from the SOA dashboard. Out of state data is from the Harvard Global Health Institute (<https://globalepidemics.org/key-metrics-for-covid-suppression/>) and generally lags a day behind most of our other reporting. Policy recommendations at varying levels (<1, <10, <25, 25+) can be found on their website