



City and Borough of Juneau
 City & Borough Manager's Office
 155 South Seward Street
 Juneau, Alaska 99801
 Telephone: 586-5240 | Facsimile: 586-5385

DATE: October 25, 2021
 TO: CBJ Assembly
 FROM: Robert Barr, Incident Commander
 RE: **Situational Update –Level 3 High**

<p>Level 3 - High</p>	<p>The community is experiencing high case positivity. The Delta variant is present and community spread is occurring. Vaccine is available.</p>	<p>Local hospital case loads and staffing capacity have mostly stabilized, although there continue to be day-to-day spikes. Hospital capacity within in Alaska and in the Pacific Northwest remains significantly restricted.</p>	<p>Contact tracing remains difficult due to the high number of contacts per positive individual and the inability to get information from some positive individuals.</p>	<p>The Complete CBJ COVID-19 Dashboard can be found here or by going to Juneau.org/ COVID-19</p>
------------------------------	--	---	--	---

Situation Assessment: The 14 and 7 day case rates remain elevated at the very high alert level. The Delta variant is driving case transmission locally and statewide. The community is urged to be cautious. Everyone regardless of vaccination status is now required to mask when indoors in public places. It is highly recommended that individuals limit social contact to mitigate disease spread and allow for effective contact tracing. Individuals should test immediately if they have even mild symptoms. **The single most effective strategy to mitigate COVID is to get vaccinated.**

Issues of Note:

We continue to plan for pediatric vaccination clinics. We expect to offer a first round of clinics the week of November 8th, pending the FDA's meeting tomorrow ([video link](#)) followed by final CDC approval of November 2nd and 3rd. Our order of 1200 pediatric doses for this first round of clinics has been approved and should ship soon. [SEARHC](#) will also be offering pediatric vaccine once it is approved.

We are developing a plan to offer over-the-counter / at-home rapid antigen tests to JSD students and ideally the community at-large. While rapid antigen tests are not as sensitive as the type of PCR-based testing currently in use at the hospital, they are still highly effective at detecting transmissible COVID-19. Numerous school districts have started piloting [test-to-stay](#) programs, which involve increased testing (up to daily) for asymptomatic close-contact students rather than at-home quarantine. Rapid antigen testing has been commonplace in many areas of the world for some time now – only recently have they gained FDA approval in the US. This type of testing, at scale, should enable significantly increased and safer public activity. It may also enable us to scale down our PCR based testing operations.

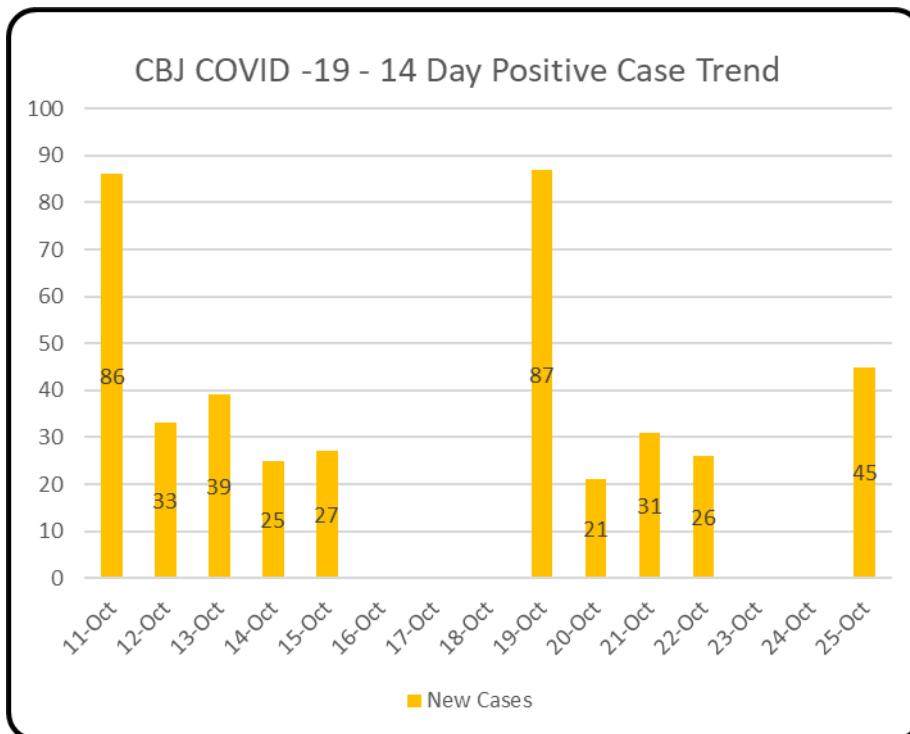
General Case Trends:

Juneau Public Health was able to report generalized case trends for the last 7 days:

- We have roughly 148 active cases
- Of those, approximately 48 are in individuals age 18 or younger and 32 are from individuals under 12.
- We do have a cluster in a group of kids
- As of the end of next week, there were no active cases at Lemon Creek
- Many of our cases from this weekend were known contacts (mostly household or non-household family) to existing cases
- The age range of positive cases spans from under 1 to mid-80s.

Daily Numbers update: We are reporting 71 new resident cases since the last EOC report on October 21st (F-M).

Statewide, the Alaska Department of Health and Social Services reports [1,686](#) new people identified with COVID-19 in the past three days. The state also reports 5 new deaths bringing the total number of resident deaths to 678. Alaska has had 129,740 cumulative resident cases of COVID-19 and a total of 5,212 nonresidents.



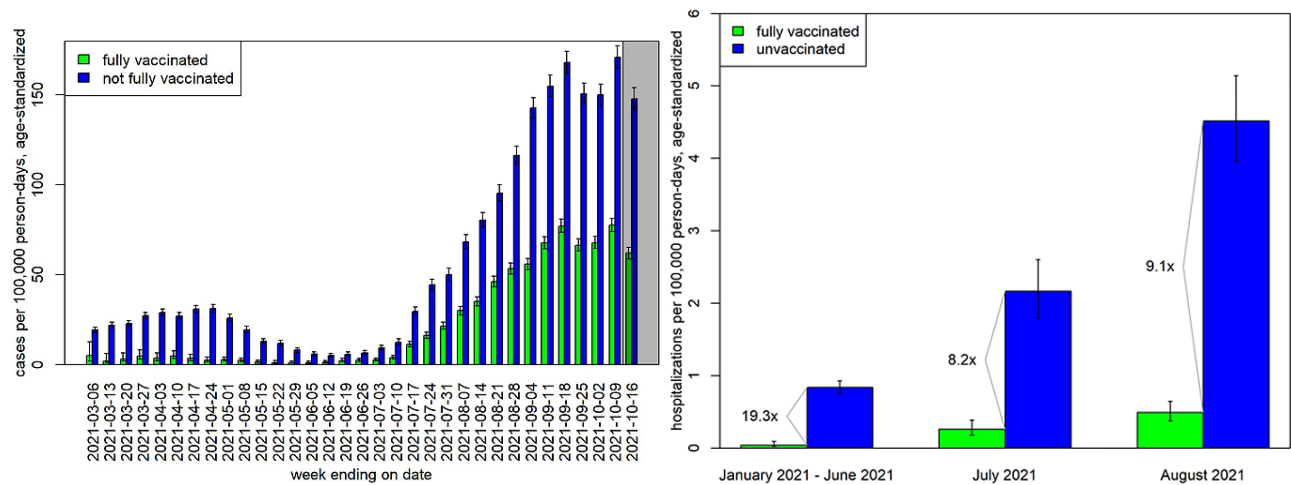
Weekly Summary – 14 day lookback for positive tests October 5th through October 19th

Over the last 14 days there have been 420 positive cases in Juneau. Elevated case counts statewide, precludes Public Health from providing more detailed information at the local level about case acquisition, age, race, or gender breakdown, or vaccine breakthrough data other than the estimates above.

Breakthrough Cases: Vaccine breakthrough (VB) infections of COVID are those detected in a person who is at least 2 weeks beyond their second dose of a 2-dose series or the only dose of a 1-dose series.

From January 16–October 16, 2021, 64 deaths, 204 hospitalizations, and 16,970 cases with a VB infection were reported among Alaska residents aged ≥12 years. These counts are provisional and subject to change as data are compiled and reviewed. In that same time frame, a total of 62,099 cases, 1,445 hospitalizations, and 352 deaths were reported.

73% of all cases, 86% of all hospitalizations, and 82% of deaths among Alaska residents aged ≥12 years from January 16–October 16, 2021 were in people who were not fully vaccinated.

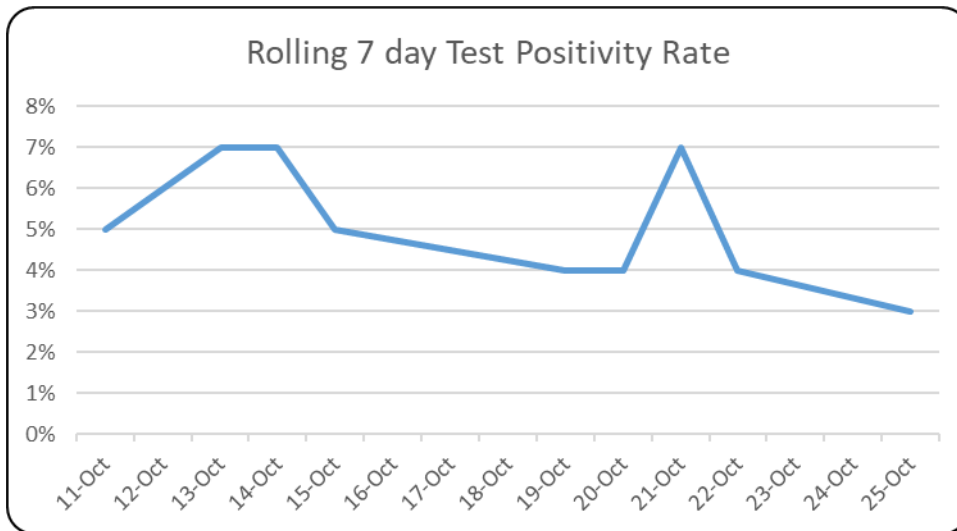


Variants of Concern:

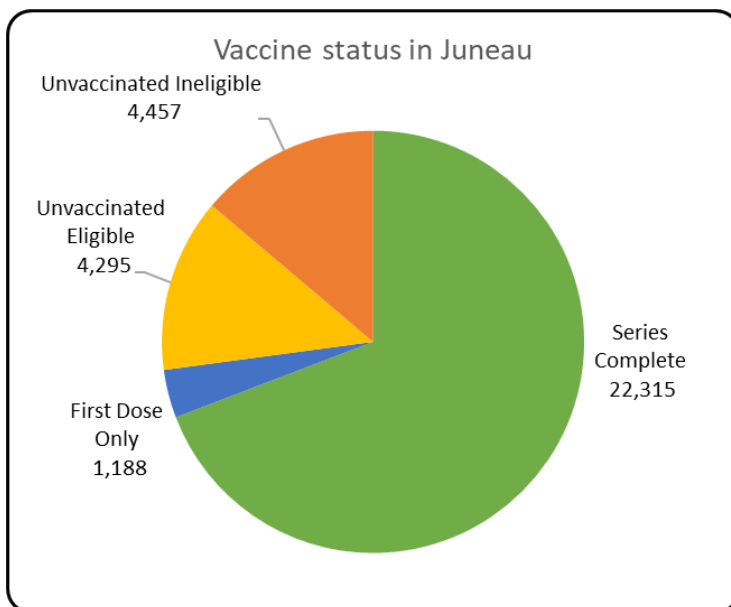
The Delta variant has become the dominant SARS-CoV-2 variant in Alaska. This variant transmits more easily than other variants. The State of Alaska variants dashboard is available online: <https://akvariants.github.io/>

Testing Summary:

512 COVID tests were processed through BRH since the last EOC report bringing the total number of tests at BRH to 1066 for the week. Most tests processed through BRH are returning in less than 24 hours.



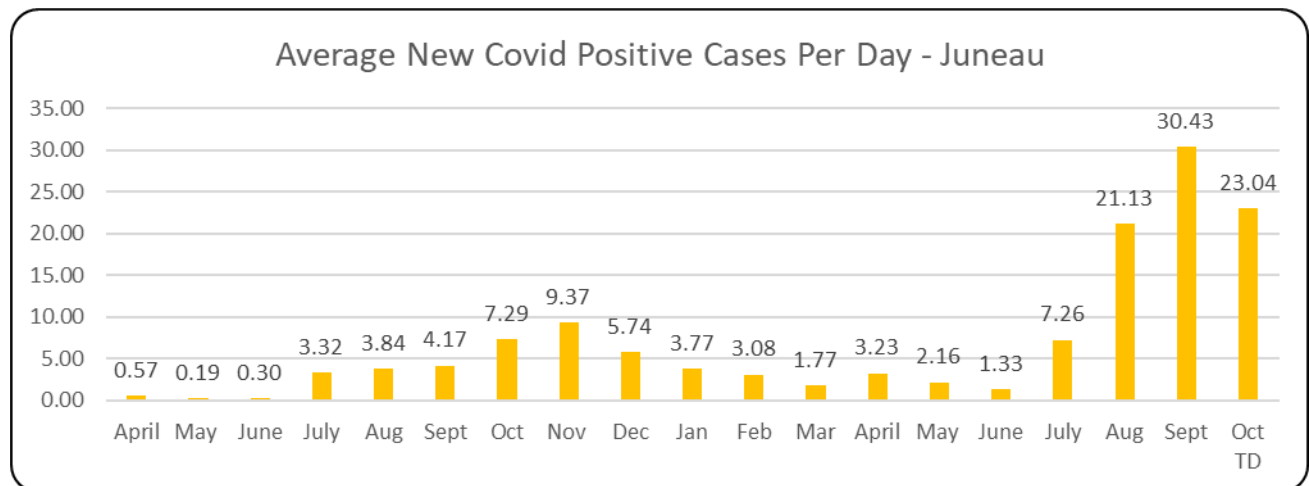
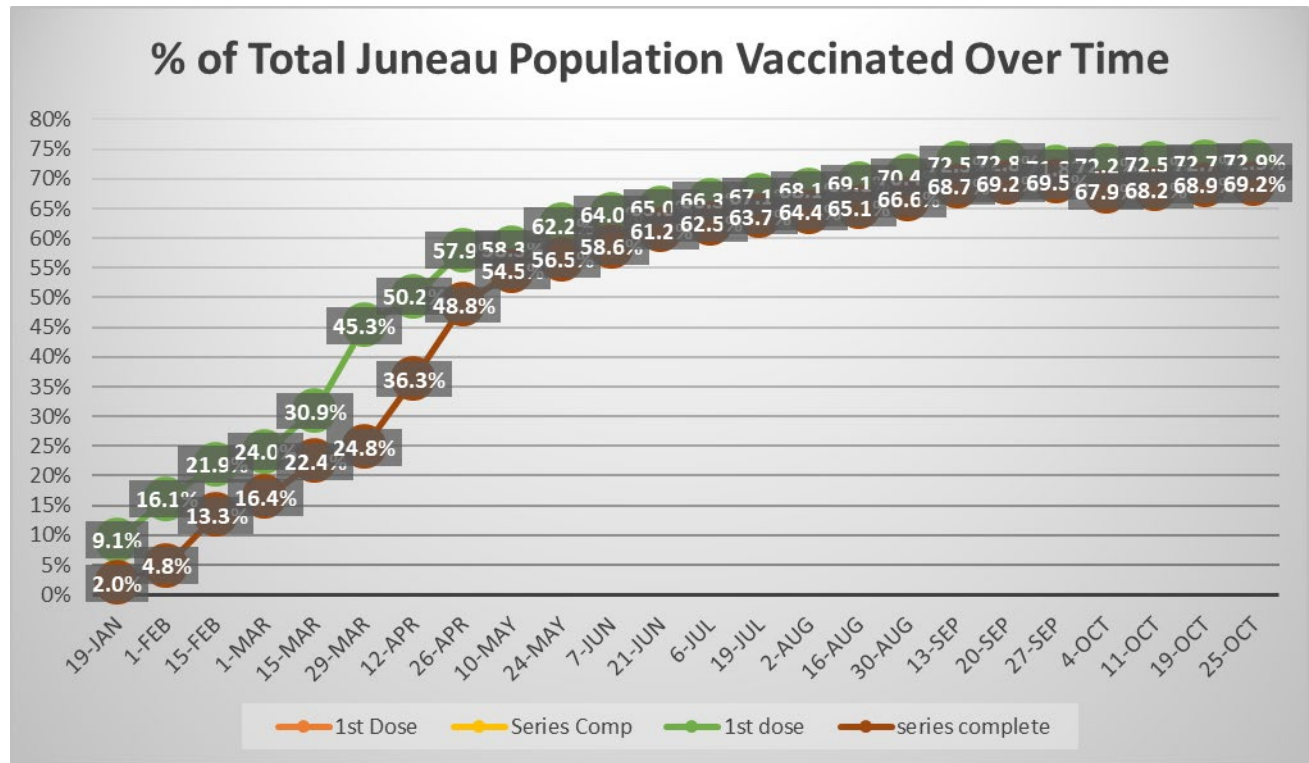
Vaccination Updates:

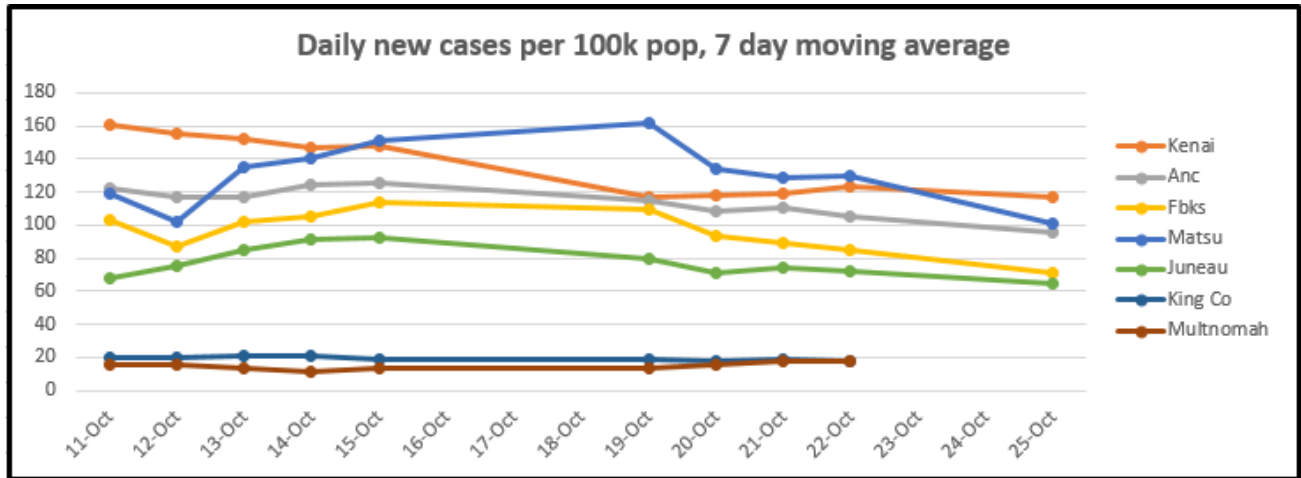


Total: **72.9%** of the total population of Juneau has received at least 1 dose of vaccine and **69.2%** have completed their vaccine series.

12+: **84.5%** of the age eligible Juneau population has received at least 1 dose of vaccine. **80.3%** have completed their vaccine series.

65+: **94.5%** of this age group has at least one dose of vaccine. **91.2%** have completed the vaccine series.





This chart tracks the number of new cases in the past 7 days, controlled for population. King County (Seattle) and Multnomah County (Portland) are included for context and due to travel frequency. The source data for Alaska is from the SOA dashboard. Out of state data is from the Harvard Global Health Institute (<https://globalepidemics.org/key-metrics-for-covid-suppression/>) and generally lags a day behind most of our other reporting. Policy recommendations at varying levels (<1, <10, <25, 25+) can be found on their website